



ARCADE[®] Lighting

Towards greener tomorrow

2016

arcadelighting.com



ABOUT US

Arcade Lighting is a specialty lighting enterprise combining expertise in LED Lighting solutions. Over 30 years, we have made our presence felt in the industry with our quality range in Retail, Commercial, Industrial and Outdoor Lights under our brand name "ARCADE".

The company has added its LED Lighting business as a strategic move to meet world's rising demand in environmental-friendly, green lighting products.

Our product quality, functionality as well as cost competitiveness are the best and considered to be of industry leading standards. The company is leveraging its LED advantages to escalate the transformation of traditional lighting to energy-saving LED application; For the reason,





Arcade has gained commitment from strategic alliances, including several, committed partnership within India and abroad.

We offer a selection of high-end indoor, outdoor range suitable for general lighting cove lighting, ceiling lighting, spot lighting, display lighting, accent lighting etc. Besides this, we also offer solutions from concept designing to installations, with uncompromising commitment to details. We adhere to defined norms of product construction and assembly.

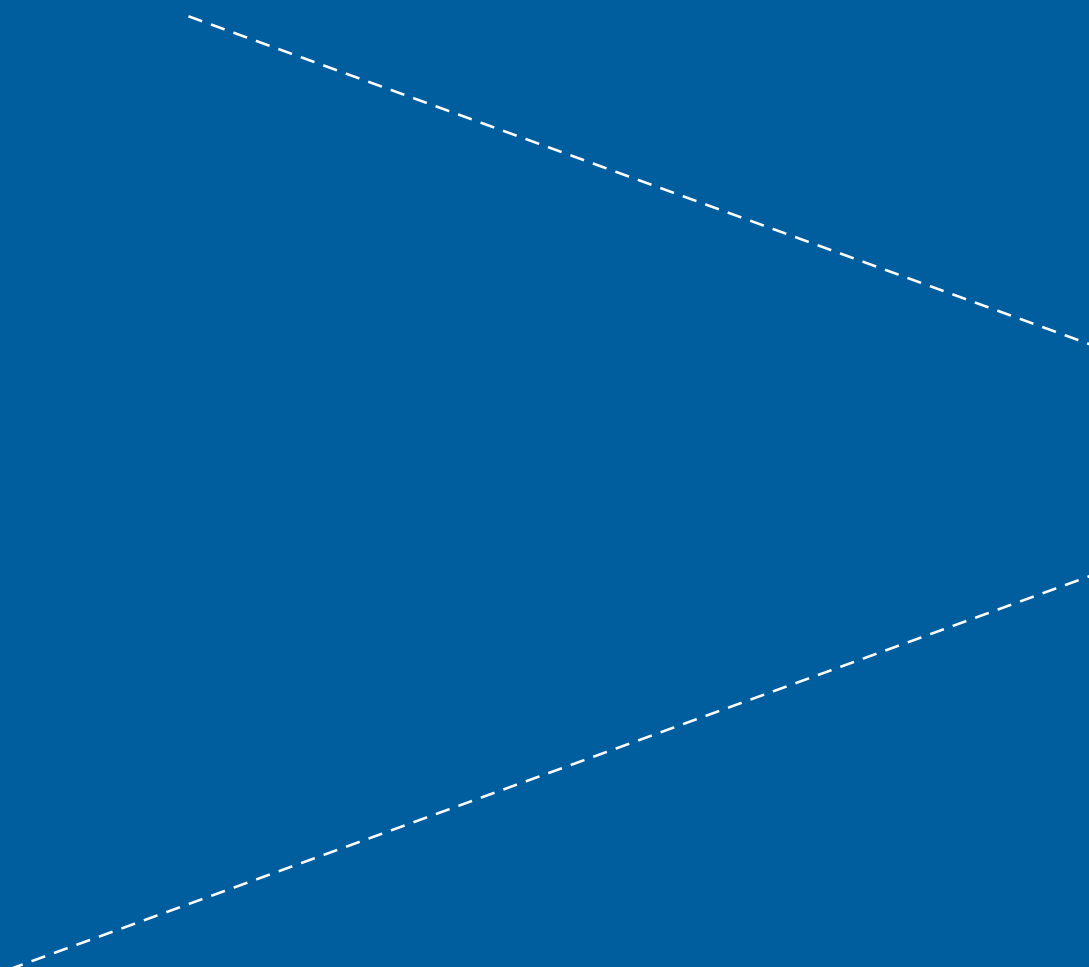
Our state of art production spans more than 1200 sq. meters, optimized by highly trained personnel to ensure we can meet the ever challenging lighting market's requirement.



PRODUCT OVERVIEW

-  Spot and Accent Lights ----- 4-15
-  Down Lights ----- 16-29
-  Linear Lights ----- 30-39
-  Industrial, Street and
Flood Lights ----- 40-46

Spot and Accent Lights



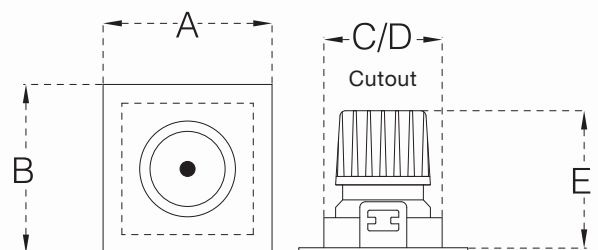


VEGA

A high output led recessed downlite with passive cooling & consistent color performance. Aluminum pressure die cast body & heat sink in durable corrosion resistance, anti-fading, anti-scratch electro static thermo painting finish with high purity metallized reflector for optimum light output.

Advanced thermal management technology to ensure consistency of LED life span, colour temperature and maximum output lumens.

Code	Wattage	A x B	C x D x E (mm)
ADS 6	6	90 x 90	75 x 75 x 100
ADS 12	12	90 x 90	75 x 75 x 100
ADS 15	15	110 x 110	90 x 90 x 115
ADS 20	20	110 x 110	90 x 90 x 115



Applications:
Retail Shop, Studios, Stage, Home, Office, Hotels & Restaurants, Cafes etc.

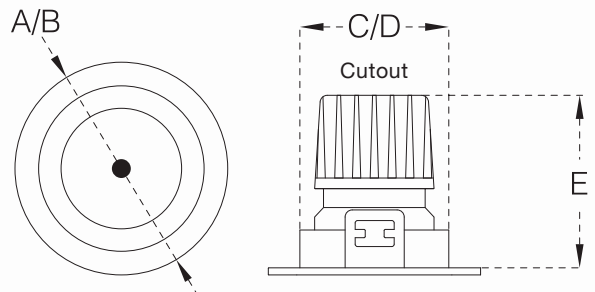


VEGA

A high output led recessed downlight with passive cooling & consistent color performance. Aluminum pressure die cast body & heat sink in durable corrosion resistance, anti-fading, anti-scratch electro static thermo painting finish with high purity metallized reflector for optimum light output.

Advanced thermal management technology to ensure consistency of LED life span, colour temperature and maximum output lumens.

Code	Wattage	A	C x E (mm)
ADR 6	6	90 Ø	75 Ø x 100
ADR 12	12	90 Ø	75 Ø x 100
ADR 15	15	110 Ø	90 Ø x 115
ADR 20	20	110 Ø	90 Ø x 115



Applications:
Retail Shop, Studios, Stage, Home, Office, Hotels & Restaurants, Cafes etc.

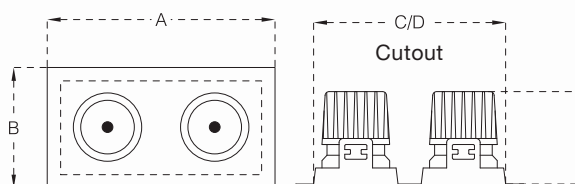


VEGA PLUS

A high output twin led recessed downlight with passive cooling & consistent color performance. Aluminum pressure die cast body & heat sink in durable corrosion resistance, anti-fading, anti-scratch electro static thermo painting finish with high purity metallized reflector for optimum light output.

Advanced thermal management technology to ensure consistency of LED life span, colour temperature and maximum output lumens.

Code	Wattage	A x B	C x D x E (mm)
ADDS 12	2 x 6	170 x 90	155 x 75 x 100
ADDS 24	2 x 12	170 x 90	155 x 75 x 100
ADDS 30	2 x 15	210 x 110	190 x 90 x 115
ADDS 40	2 x 20	210 x 110	190 x 90 x 115



Applications:
Retail Shop, Studios, Stage, Home, Office, Hotels & Restaurants, Cafes etc.

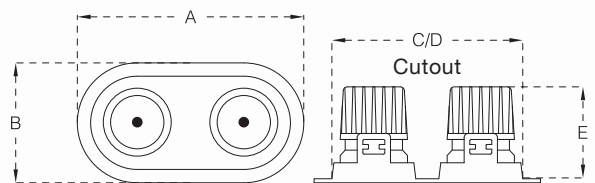


VEGA PLUS

A high output twin led recessed downlite with passive cooling & consistent color performance. Aluminum pressure die cast body & heat sink in durable corrosion resistance, anti-fading, anti-scratch electro static thermo painting finish with high purity metallized reflector for optimum light output.

Advanced thermal management technology to ensure consistency of LED life span, colour temperature and maximum output lumens.

Code	Wattage	A x B	C x D x E (mm)
ADDR 12	2 x 6	170 x 90	155 x 75 x 100
ADDR 24	2 x 12	170 x 90	155 x 75 x 100
ADDR 30	2 x 15	210 x 110	190 x 90 x 115
ADDR 40	2 x 20	210 x 110	190 x 90 x 115



Applications:
Retail Shop, Studios, Stage, Home, Office, Hotels & Restaurants, Cafes etc.

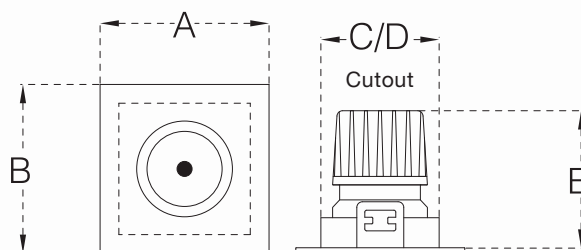


PLATO

A high output led recessed downlight with passive cooling & consistent color performance. Aluminum pressure die cast body & heat sink in durable corrosion resistance, anti-fading, anti-scratch electro static thermo painting finish with high purity metallized reflector for optimum light output.

Advanced thermal management technology to ensure consistency of LED life span, colour temperature and maximum output lumens.

Code	Wattage	A x B	C x D x E (MM)
AFS 6	6	90 x 90	75 x 75 x 75
AFS 12	12	90 x 90	75 x 75 x 75
AFS 15	15	110 x 110	90 x 90 x 95
AFS 20	20	110 x 110	90 x 90 x 95



Applications:
Retail Shop, Studios, Stage, Home, Office, Hotels & Restaurants, Cafes etc.

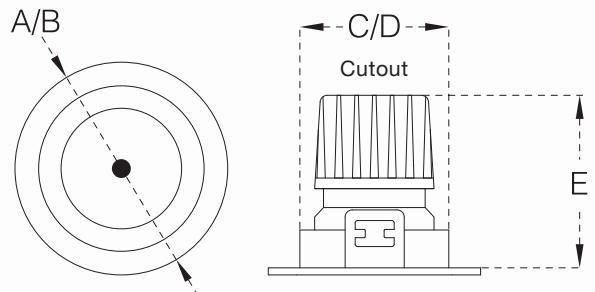


PLATO

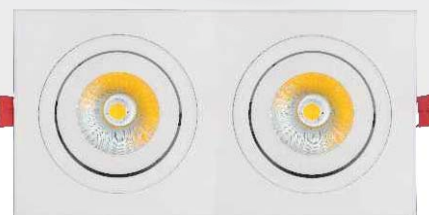
A high output led recessed downlight with passive cooling & consistent color performance. Aluminum pressure die cast body & heat sink in durable corrosion resistance, anti-fading, anti-scratch electro static thermo painting finish with high purity metallized reflector for optimum light output.

Advanced thermal management technology to ensure consistency of LED life span, colour temperature and maximum output lumens.

Code	Wattage	A	C x E (mm)
AFR 6	6	90 Ø	75 Ø x 75
AFR 12	12	90 Ø	75 Ø x 75
AFR 15	15	110 Ø	90 Ø x 95
AFR 20	20	110 Ø	90 Ø x 95



Applications:
Retail Shop, Studios, Stage, Home, Office, Hotels & Restaurants, Cafes etc.

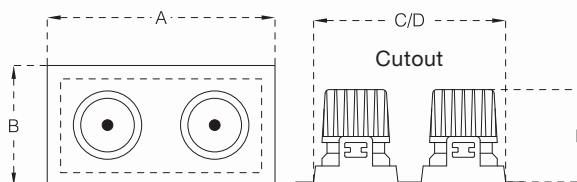


PLATO PLUS

A high output led recessed downlight with passive cooling & consistent color performance. Aluminum pressure die cast body & heat sink in durable corrosion resistance, anti-fading, anti-scratch electro static thermo painting finish with high purity metallized reflector for optimum light output.

Advanced thermal management technology to ensure consistency of LED life span, colour temperature and maximum output lumens.

Code	Wattage	A x B	C x D x E (mm)
AFFS 12	2 x 6	170 x 90	155 x 75 x 75
AFFS 24	2 x 12	170 x 90	155 x 75 x 75
AFFS 30	2 x 15	210 x 110	190 x 90 x 90
AFFS 40	2 x 20	210 x 110	190 x 90 x 90



Applications:
Retail Shop, Studios, Stage, Home, Office, Hotels & Restaurants, Cafes etc.

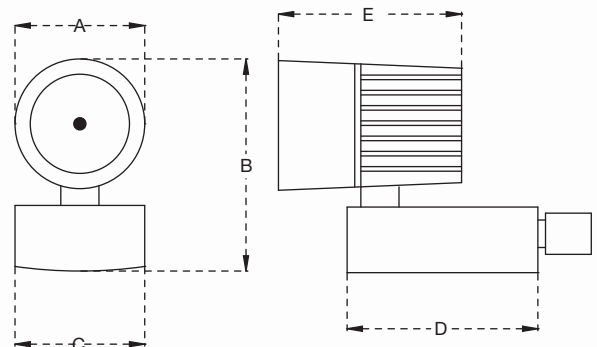


TRENDYLIGHT

A high output led recessed downlight with passive cooling & consistent color performance. Aluminum pressure die cast body & heat sink in durable corrosion resistance, anti-fading, anti-scratch electro static thermo painting finish with high purity metallized reflector for optimum light output.

Advanced thermal management technology to ensure consistency of LED life span, colour temperature and maximum output lumens.

Code	Wattage	A x B x C	D x E (mm)
ATL 20	20	85 Ø x 140 x 95	130 x 125
ATL 30	30	100 Ø x 155 x 95	130 x 140



Swivel



Beam Angle
40°



Burning Hours
35K



PF
>0.97



THD
<10%

LUMENS PER WATT

CW - 100
NW - 98
WW - 93



Dimming
Optional



CRI
>90

Applications:
Retail Shop, Studios, Hotels & Restaurants, Cafes etc.

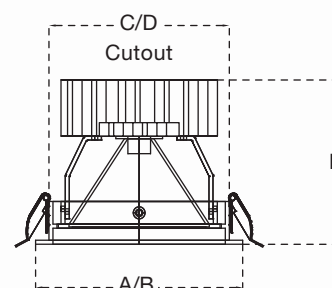
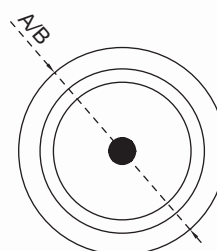


HIPPO

A high output led recessed downlite with active cooling & consistent color performance. Aluminum pressure die cast body & heat sink in durable corrosion resistance, anti-fading, anti-scratch electro static thermo painting finish with high purity metallized reflector for optimum light output.

Advanced thermal management technology to ensure consistency of LED life span, colour temperature and maximum output lumens.

Code	Wattage	A	C x E (mm)
ADR 30	30	160 Ø	140 Ø x 115
ADR 50	50	160 Ø	140 Ø x 130
ADR 100	100	160 Ø	140 Ø x 130



Swivel



Beam Angle
20°, 40°



Burning Hours
35K



PF
>0.97



THD
<10%

**LUMENS
PER WATT**

CW - 100
NW - 98
WW - 93



Active Cooling



CRI
>90

Applications:
Retail Shop, Studios, Stage, Home, Office, Hotels & Restaurants, Cafes etc.

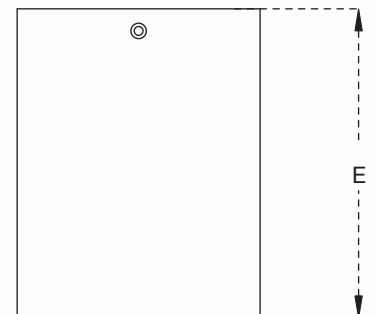
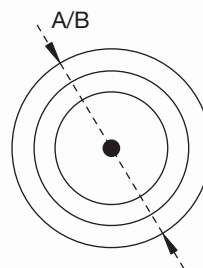


TURBO

A high output led surface downlite with passive cooling & consistent color performance. Aluminum pressure die cast body & heat sink in durable corrosion resistance, anti-fading, anti-scratch electro static thermo painting finish with high purity metallized reflector for optimum light output.

Advanced thermal management technology to ensure consistency of LED life span, colour temperature and maximum output lumens.

Code	Wattage	A x B	E (mm)
ASFR 12	12	110 Ø	140
ASFR 15	15	110 Ø	140



Swivel



Beam Angle
20°, 40°



Burning Hours
35K



Driver
Inbuilt



THD
<10%

**LUMENS
PER WATT**

CW - 100
NW - 98
WW - 93



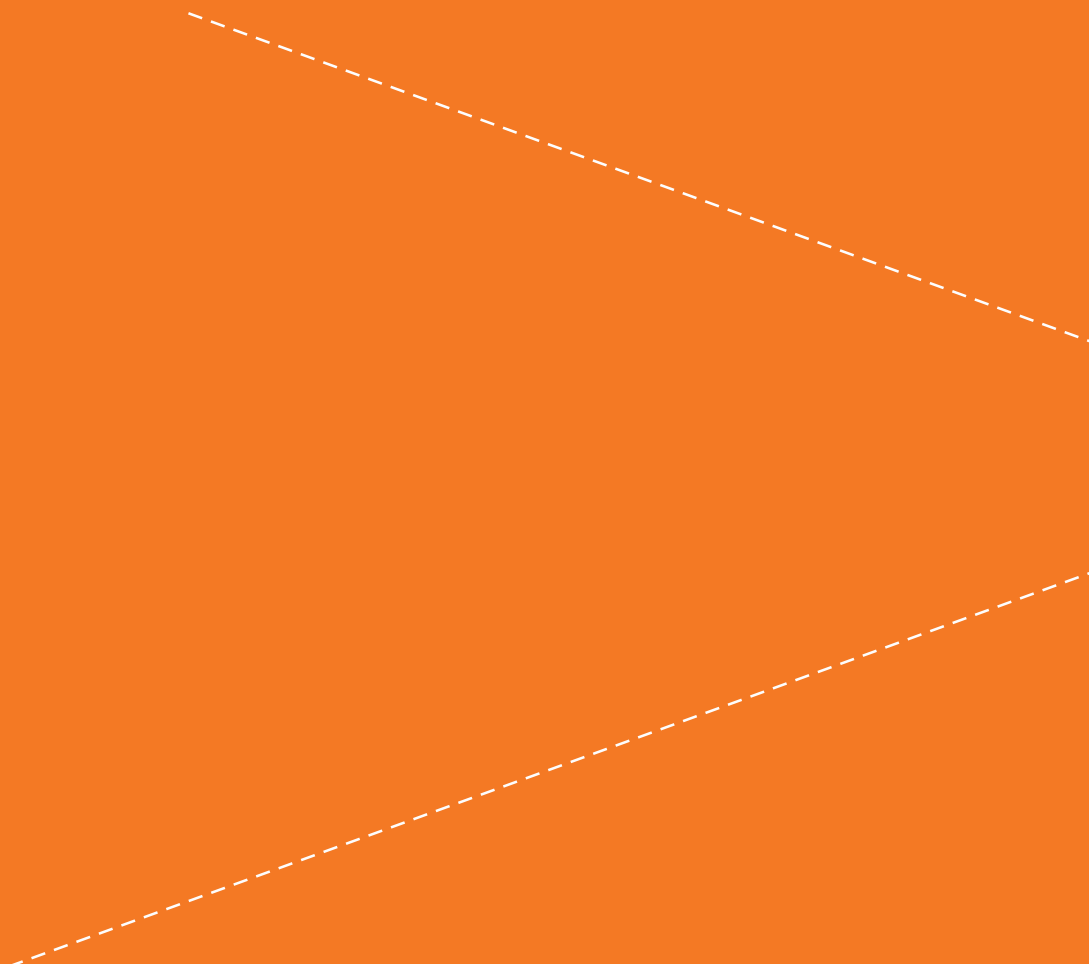
Dimming
Optional



CRI
>90

Applications:
Retail Shop, Studios, Stage, Home, Office, Hotels & Restaurants, Cafes etc.

Down Lights





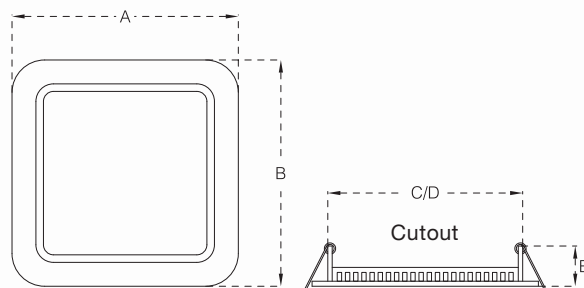
ULTRA SLIM PANEL

Comfort and stylish Edge lit lighting solution with unique glare control. Being extremely slim makes it very flexible in their application.

Aluminium die-cast housing in durable corrosion resistance, anti-scratch electro static thermo-painting finish.

Easy to Install, use and maintain.

Code	Wattage	A x B	C x D x E (mm)
ACPS 1007	7	100 x 100	75 x 75 x 28
ACPS 15012	12	150 x 150	125 x 125 x 28
ACPS 18018	18	180 x 180	155 x 155 x 28
ACPS 21724	24	217 x 217	192 x 192 x 28



Burning Hours
30K



CRI
>80



PF
>0.95



THD
<15%



Beam Angle
110°



Driver Protection
OVP, Short Circuit, Surge

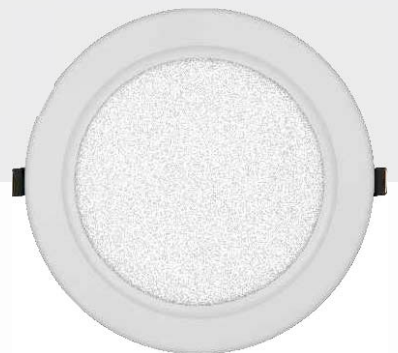
**LUMENS
PER WATT**
CW - 95
NW - 93
WW - 89



Dimming
Optional

Applications:

Home, Office, Retail Shop, Super Market, Hospital, Library, Hotels & Restaurants, etc.



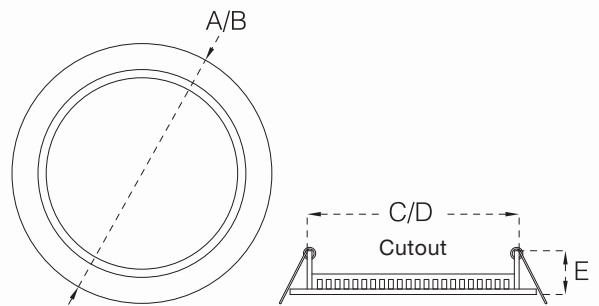
ULTRA SLIM PANEL

Comfort and stylish Edge lit lighting solution with unique glare control. Being extremely slim makes it very flexible in their application.

Aluminium die-cast housing in durable corrosion resistance, anti-scratch electro static thermo-painting finish.

Easy to Install, use and maintain.

Code	Wattage	A	C x E (mm)
ACPR 1207	7	120 Ø	95 Ø x 28
ACPR 14512	12	145 Ø	120 Ø x 28
ACPR 19018	18	190 Ø	165 Ø x 28
ACPR 24024	24	240 Ø	215 Ø x 28



Burning Hours
30K



CRI
>80



PF
>0.95



THD
<15%



Beam Angle
110°



Driver Protection
OVP, Short Circuit, Surge

**LUMENS
PER WATT**

CW - 95
NW - 93
WW - 89



Dimming
Optional

Applications:

Home, Office, Retail Shop, Super Market, Hospital, Library, Hotels & Restaurants, etc.

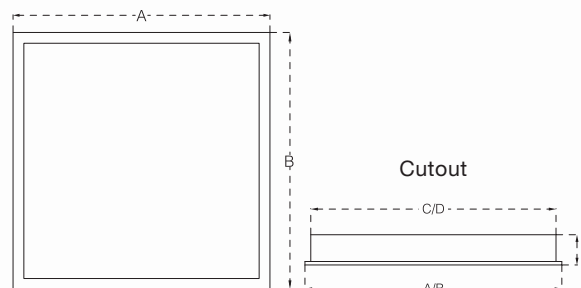


SLOT

The Slot luminaire family represents high quality lighting solutions together with glare-free light and unusual lighting effects. The exclusive light frame creates a unique light appearance and underlines the completely harmonious illumination of the light surface.

High transmittance diffuser creating a high visual comfort and a very uniform lighting distributions.

Code	Wattage	A x B	C x D x E (mm)
ABLP 22	22	295 x 295	270 x 270 x 70
ABLP 36	36	595 x 595	570 x 570 x 70
ABLP 50	50	595 x 595	570 x 570 x 70



Burning Hours
40K



CRI
>80



PF
>0.95



Hi Bright



Glare-Free

LUMENS PER WATT

CW - 110
NW - 108
WW - 103



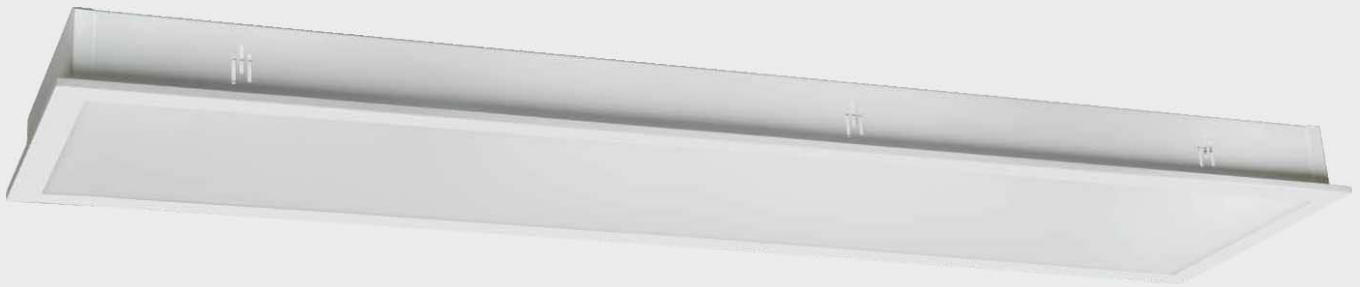
Dimming
Optional



Emergency System
Optional

Applications:

Office, Retail Shop, Hospital, Library, Hotels & Restaurants, Super Market etc.

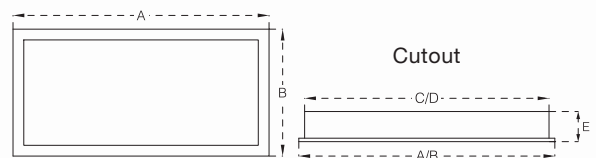


SLOT

The Slot luminaire family represents high quality lighting solutions together with glare-free light and unusual lighting effects. The exclusive light frame creates a unique light appearance and underlines the completely harmonious illumination of the light surface.

High transmittance diffuser creating a high visual comfort and a very uniform lighting distributions.

Code	Wattage	A x B	C x D x E (mm)
ABLP 25	25	595 x 295	570 x 270 x 70
ABLP 40	40	1195 x 295	1170 x 270 x 70



Burning Hours
40K



CRI
>80



PF
>0.95



Hi Bright



Glare-Free

**LUMENS
PER WATT**
CW - 110
NW - 108
WW - 103



Dimming
Optional



Emergency System
Optional

Applications:
Office, Retail Shop, Hospital, Library, Hotels & Restaurants, Super Market etc.



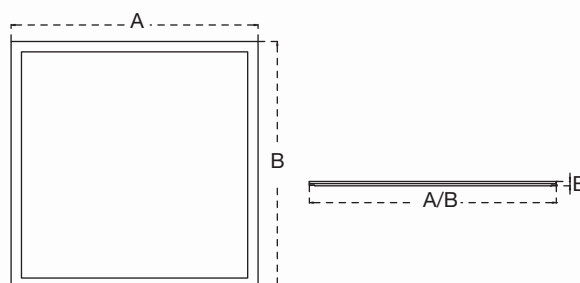
SLEEK

Comfort and stylish Edge lit lighting solution with unique glare control. Being extremely slim makes it very flexible in their application.

Housing made of high quality extruded aluminium alloy in durable corrosion resistance, anti-scratch electro static thermo-painting finish.

Versatile luminaire can be used for all types of ceiling surface, recessed as well as suspended applications.

Code	Wattage	A x B x E (mm)
AELP 22	22	295 x 295 x 12
AELP 36	36	595 x 595 x 12
AELP 40	36	1195 x 595 x 12



Burning Hours
30K



CRI
>80



PF
>0.95



THD
<15%



Beam Angle
110°



Driver Protection
OVP, Short Circuit, Surge

**LUMENS
PER WATT**

CW - 95
NW - 93
WW - 89



Dimming
Optional

Applications:

Home, Office, Retail Shop, Super Market, Hospital, Library, Hotels & Restaurants, etc.

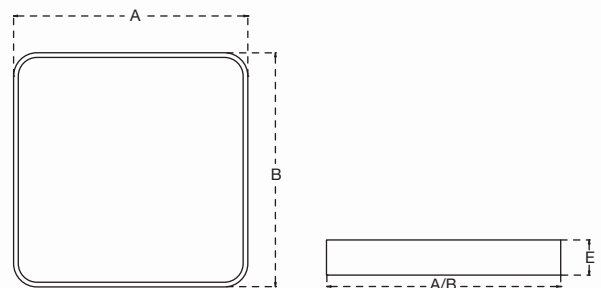


SLOT SUSPENDED

The Slot suspended luminaire family represents high quality lighting solutions together with glare-free light and unusual lighting effects. The exclusive light frame creates a unique light appearance and underlines the completely harmonious illumination of the light surface.

High transmittance diffuser creating a high visual comfort and a very uniform lighting distributions.

Code	Wattage	A x B	E (mm)
AHBLP 50	50	600 x 600	70
AHBLP 140	140	1200 x 1200	70



Burning Hours
40K



CRI
>80



PF
>0.95



Hi Bright



Glare-Free

**LUMENS
PER WATT**
CW - 110
NW - 108
WW - 103



Dimming
Optional



Emergency System
Optional

Applications:
Office, Retail Shop, Library, Hotels & Restaurants, Super Market etc.

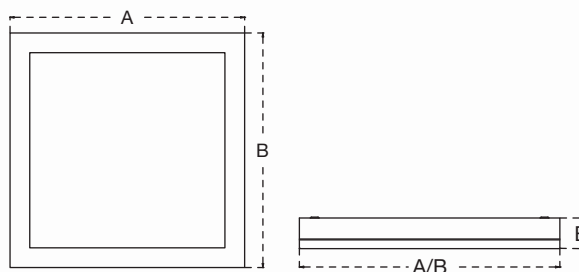


SLOT SURFACE

The Slot surface mounting luminaire represents high quality lighting solutions together with glare-free light and unusual lighting effects. The exclusive light frame creates a unique light appearance and underlines the completely harmonious illumination of the light surface.

High transmittance diffuser creating a high visual comfort and a very uniform lighting distributions.

Code	Wattage	A x B	E (mm)
ASBLP 22	22	295 x 295	70
ASBLP 36	36	595 x 595	70
ASBLP 50	50	595 x 595	70



Burning Hours
40K



CRI
>80



PF
>0.95



Hi Bright



Driver
Inbuilt

**LUMENS
PER WATT**
CW - 110
NW - 108
WW - 103



Dimming
Optional



Emergency System
Optional

Applications:
Office, Retail Shop, Hospital, Library, Hotels & Restaurants, Super Market etc.

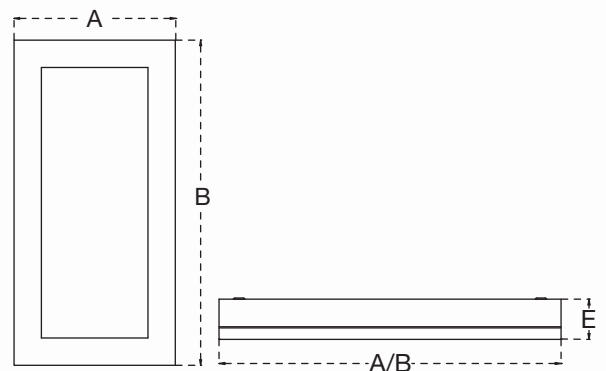


SLOT SURFACE

The Slot surface mounting luminaire represents high quality lighting solutions together with glare-free light and unusual lighting effects. The exclusive light frame creates a unique light appearance and underlines the completely harmonious illumination of the light surface.

High transmittance diffuser creating a high visual comfort and a very uniform lighting distributions.

Code	Wattage	A x B	E (mm)
ASBLP 25	25	595 x 295	70
ASBLP 40	40	295 x 1195	70



Burning Hours
40K



CRI
>80



PF
>0.95



Hi Bright



Driver
Inbuilt

**LUMENS
PER WATT**
CW - 110
NW - 108
WW - 103

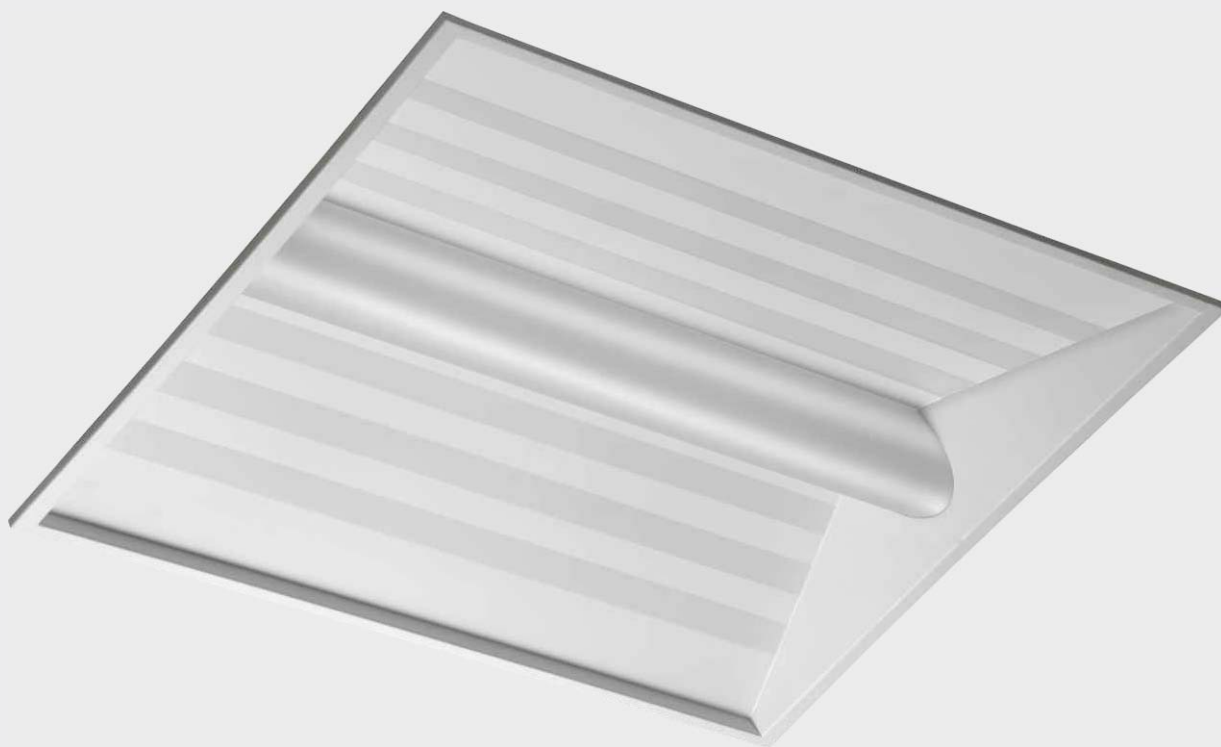


Dimming
Optional



Emergency System
Optional

Applications:
Office, Retail Shop, Hospital, Library, Hotels & Restaurants, Super Market etc.

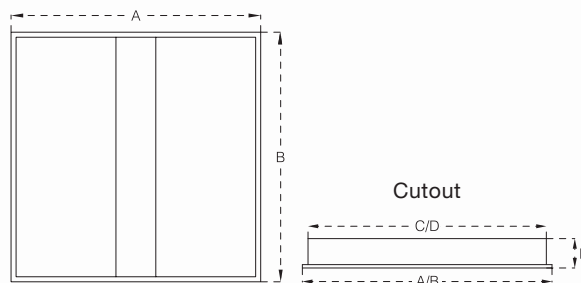


SKYLITE

The Skylite luminaire represents high quality lighting solutions together with glare-free light and unusual lighting effects. Housing made of high quality CRCA sheet steel in durable corrosion resistance, anti-scratch electro static thermo-painting finish.

High transmittance diffuser creating a high visual comfort and a very uniform lighting distributions.

Code	Wattage	A x B	C x D x E (mm)
ASK 40	40	595 x 595	570 x 570 x 70



Burning Hours
40K



CRI
>80



PF
>0.95



Hi Bright



Glare-Free

LUMENS PER WATT

CW - 110
NW - 108
WW - 103

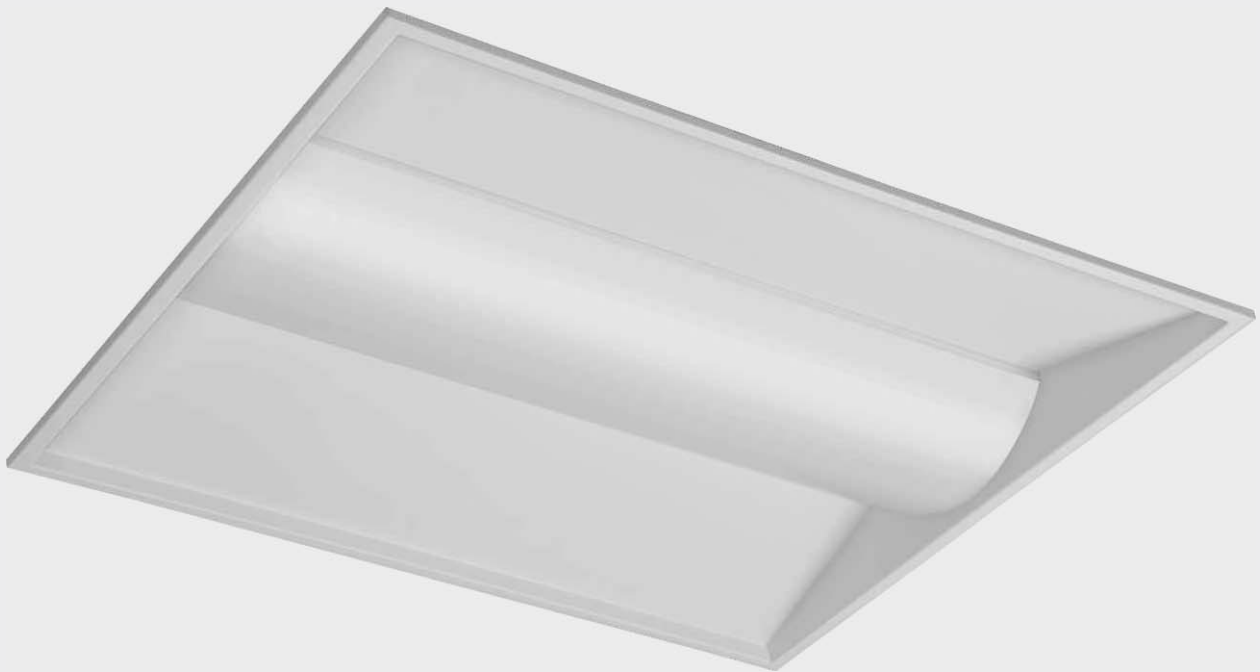


Dimming
Optional



Emergency System
Optional

Applications:
Office, Retail Shop, Hospital, Library, Hotels & Restaurants, Super Market etc.

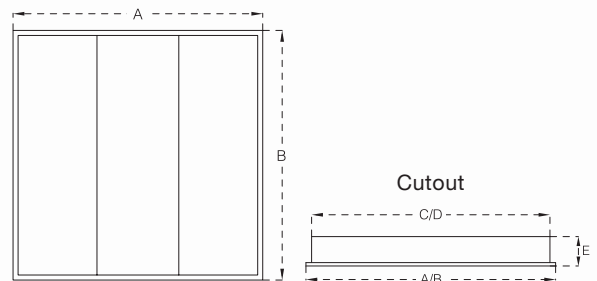


COSMO

The Cosmo luminaire represents high quality lighting solutions together with glare-free light and unusual lighting effects. Housing made of high quality CRCA sheet steel in durable corrosion resistance, anti-scratch electro static thermo-painting finish.

High transmittance diffuser creating a high visual comfort and a very uniform lighting distributions.

Code	Wattage	A x B	C x D x E (mm)
ASL 40	40	595 x 595	570 x 570 x 70



Burning Hours
40K



CRI
>80



PF
>0.95



Hi Bright



Glare-Free

LUMENS PER WATT

CW - 110
NW - 108
WW - 103



Dimming
Optional



Emergency System
Optional

Applications:

Office, Retail Shop, Hospital, Library, Hotels & Restaurants, Super Market etc.

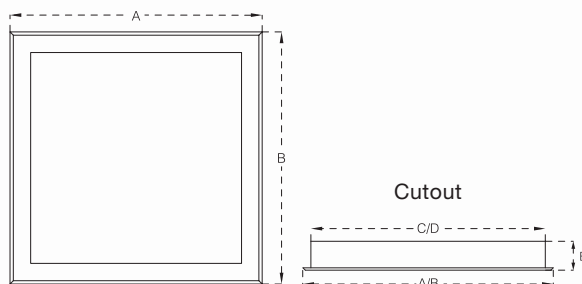


CLEAN

Dust proof fitting made of high quality CRCA sheet steel in durable corrosion resistance, anti-scratch electro static thermo-painting finish. Frame fitted with high transmittance diffuser creating a high visual comfort and a very uniform lighting distributions mounted on housing with SS captive screws.

Adjustable mounting brackets makes it easy to install and maintain.

Code	Wattage	A x B	C x D x E (mm)
ACR 36	36	610 x 610	570 x 570 x 70
ACR 50	50	610 x 610	570 x 570 x 70




Burning Hours
30K



Green Energy



PF
PF
>0.97



THD
THD
<10%



Driver Inbuilt



Driver Protection
OVP, Short Circuit, Surge

LUMENS PER WATT
CW - 110
NW - 108
WW - 103

Applications:
Pharmaceuticals Companies, Hotels, Kitchens, Restaurants, Cafes etc.



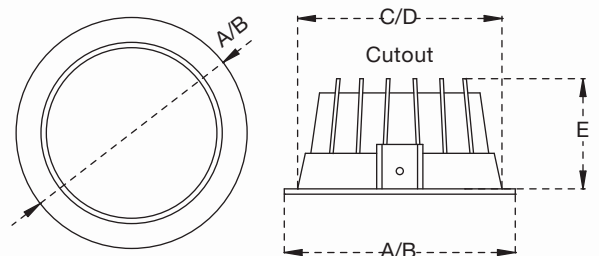
LIVA

Distinctive led downlite luminaire with outstanding performance for general lighting purpose.

Aluminium die-cast housing in durable corrosion resistance, anti-scratch electro static thermo-painting finish. High transmittance diffuser specially designed for LED light sources creating smooth and uniform lighting.

Can be used for large variety of applications because of high light output.

Code	Wattage	A	C x E (mm)
ADLR 10	10	130 Ø	115 Ø x 65
ADLR 15	15	160Ø	145 Ø x 65
ADLR 22	22	190 Ø	175 Ø x 65



Hi Bright



Beam Angle
110°



Burning Hours
35K



Glare-Free



THD
<10%



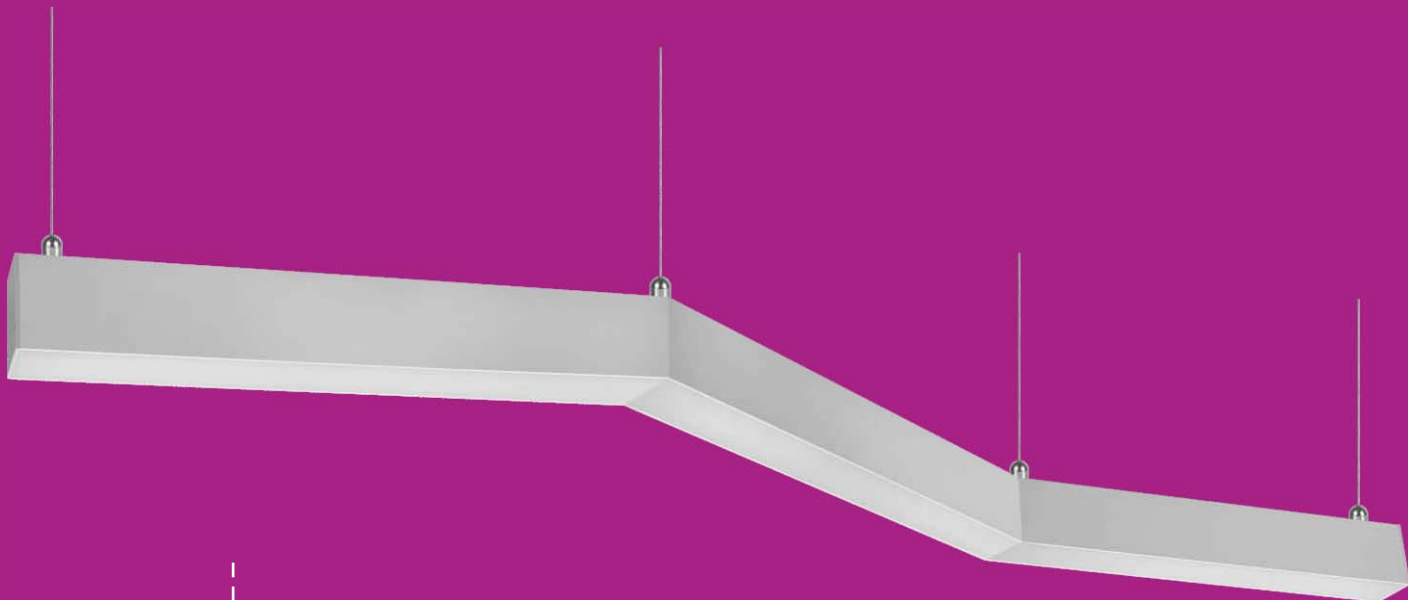
CRI
>80

**LUMENS
PER WATT**
CW - 115
NW - 112
WW - 108

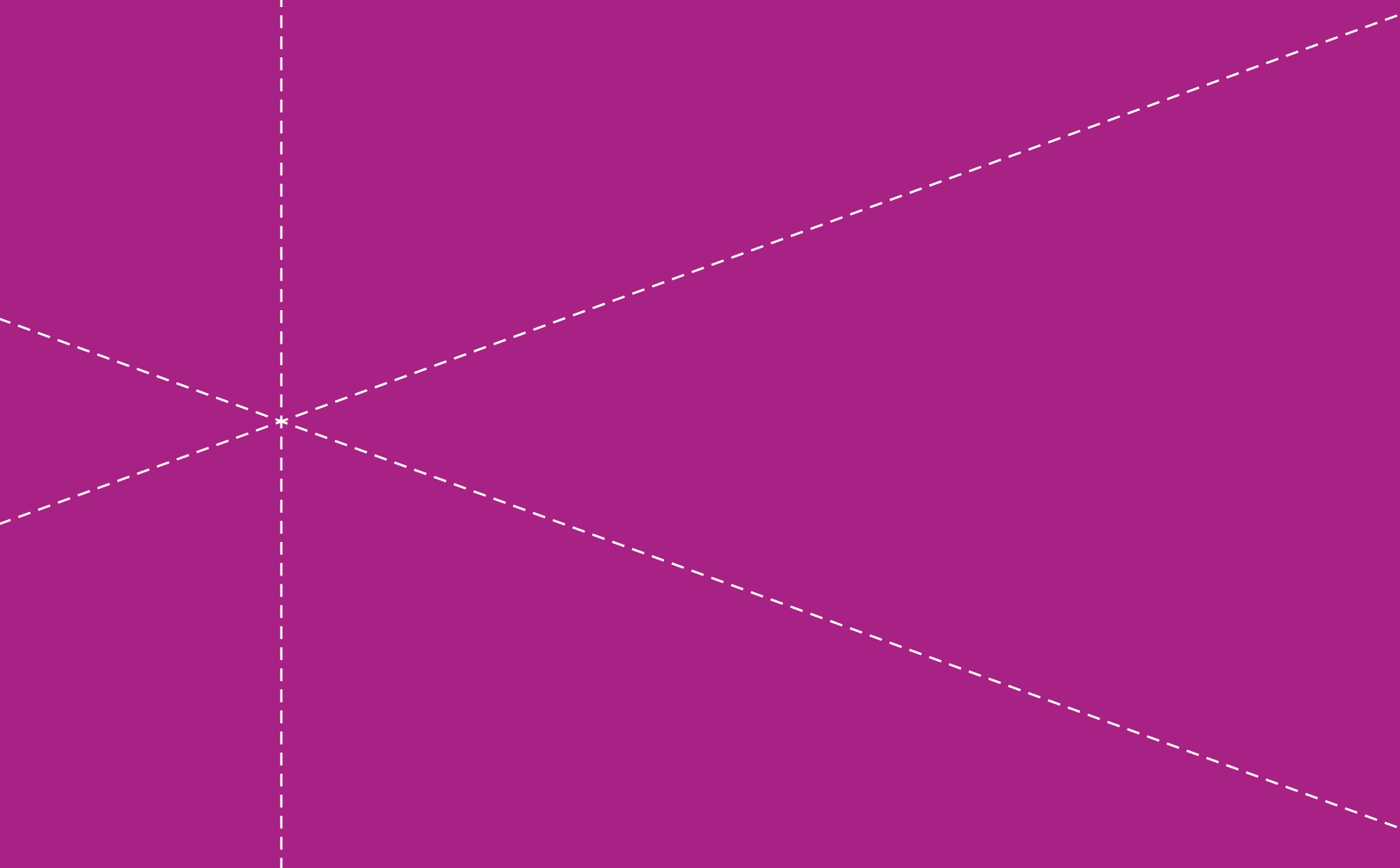


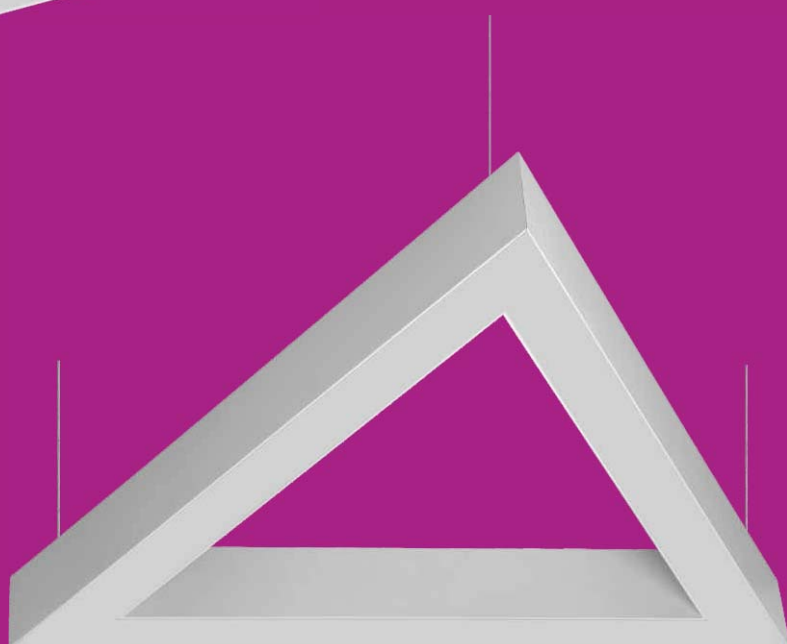
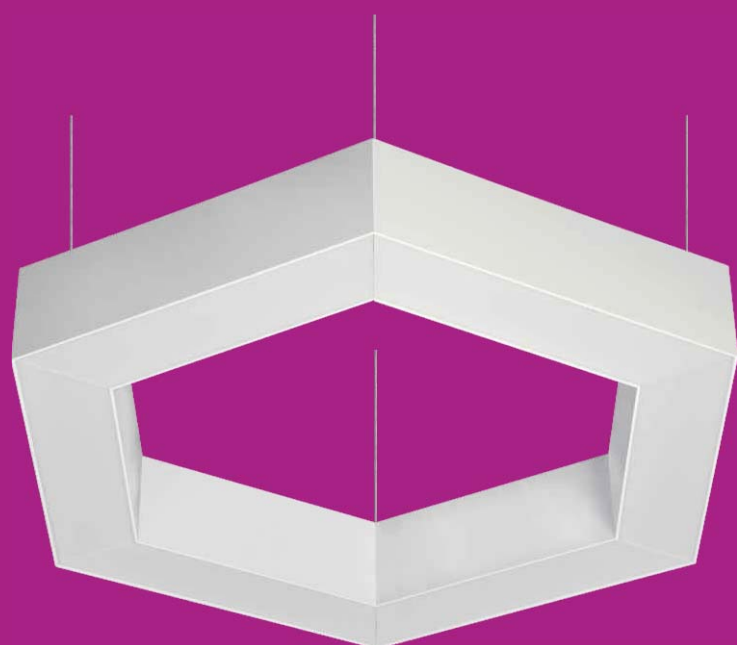
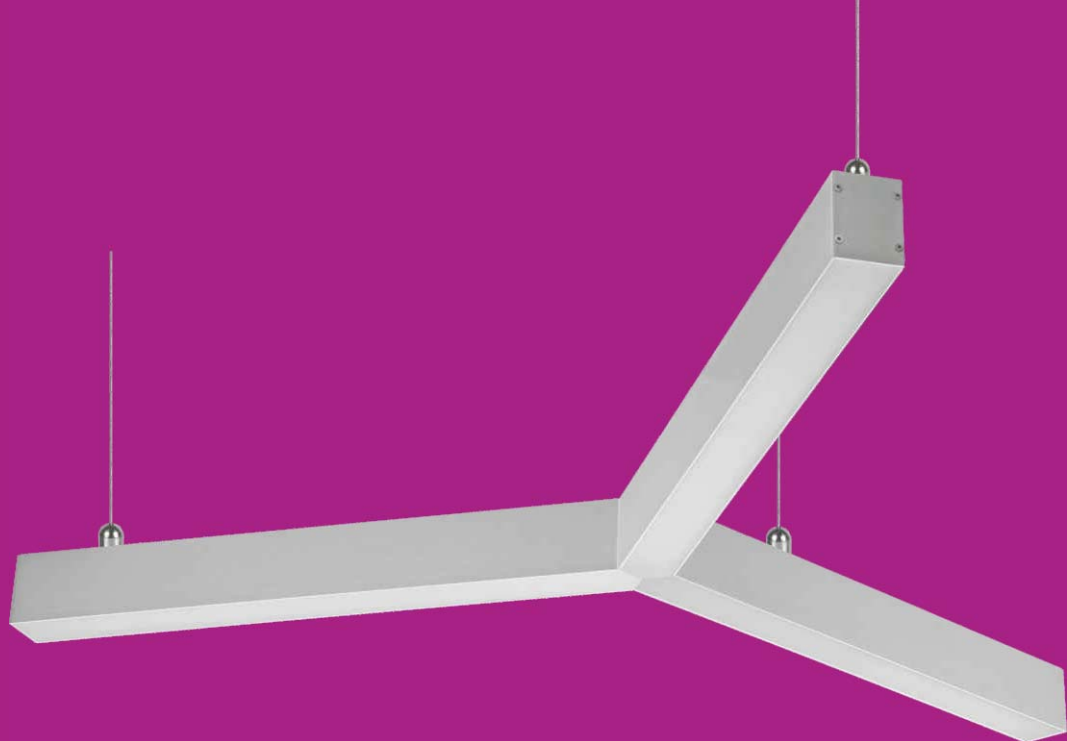
Dimming
Optional

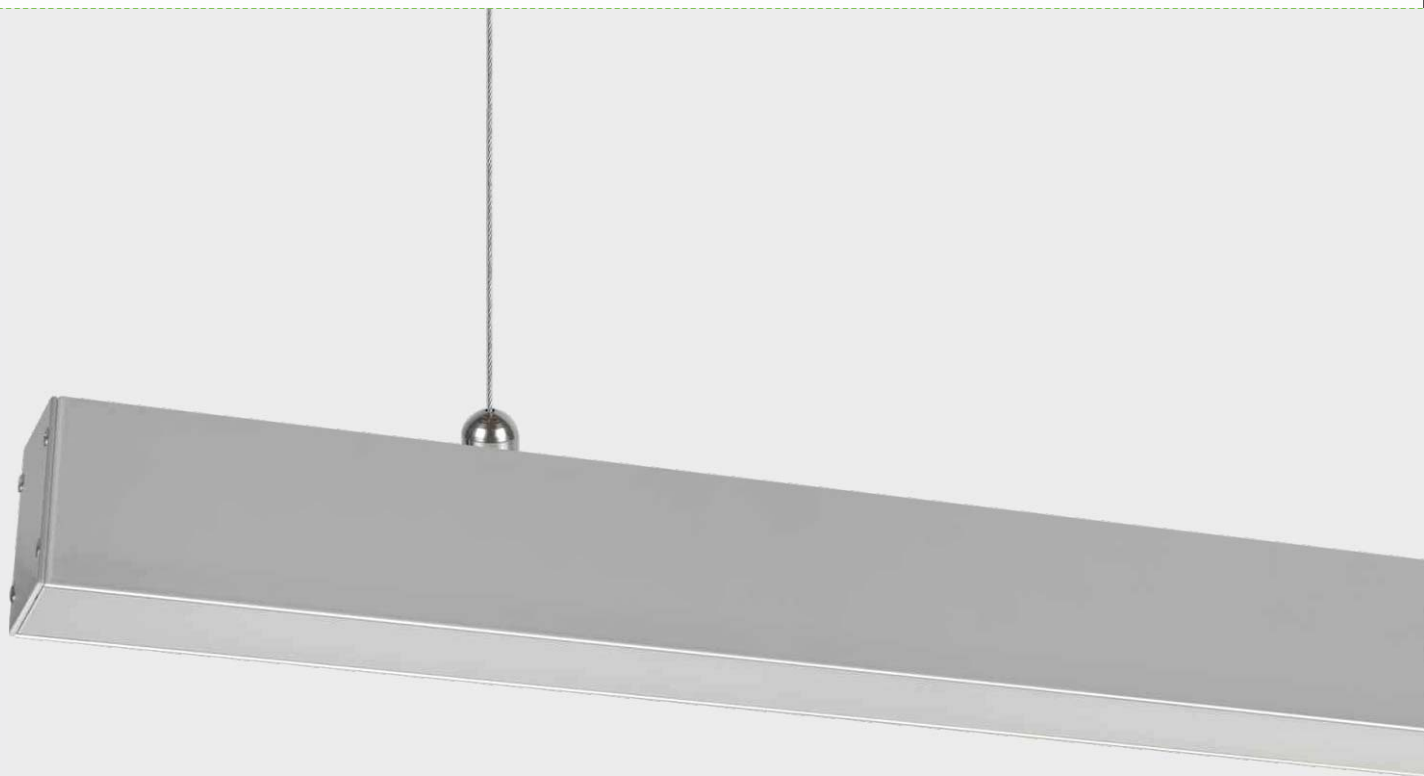
Applications:
Retail Shop, Studios, Stage, Home, Office, Hotels & Restaurants, Cafes etc.



Linear Lights







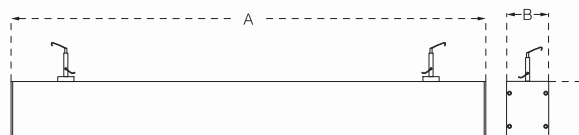
AERO SLIM

Sleek Modern design with high quality diffuser & colour options to enhance the surrounding space. Aesthetic appearance is enhanced with die cast aluminium End caps.

Highly finished Anodized aluminium housing. Extruded acrylic emits spotless, uniform & soft light.

Profile length customizable up to 2400 mm.

Code	Wattage	A x B x E (mm)
ALNS 15	15	600 x 50 x 70
ALNS 30	30	1200 x 50 x 70
ALNS 60	60	2400 x 50 x 70



Linkable



Beam Angle
120°



Driver
Inbuilt



Glare-Free



THD
<10%



Burning Hours
40K

**LUMENS
PER WATT**
CW - 110
NW - 108
WW - 103



Dimming
Optional



Emergency System
Optional

Applications:

Office, Super Market, Retail Shop, Cafes, Hotels & Restaurants, Home, Library, etc.



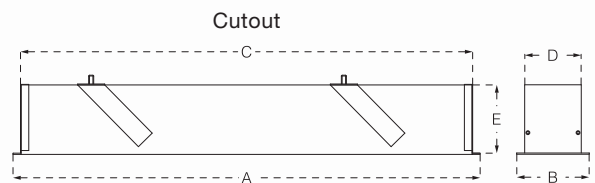
AERO SLIM RECESS

Sleek Modern design with high quality diffuser & colour options to enhance the surrounding space. Aesthetic appearance is enhanced with die cast aluminium End caps.

Electrostatic thermo - painting finished aluminium housing. Extruded acrylic emits spotless, uniform & soft light.

Profile length customizable up to 2400 mm.

Code	Wattage	A x B	C x D x E (mm)
ALNSR 15	15	610 x 65	595 x 55 x 35
ALNSR 30	30	1210 x 65	1190 x 55 x 35
ALNSR 60	60	2410 x 65	2390 x 55 x 35



Linkable



Beam Angle
120°



PF
>0.97



Glare-Free



THD
<10%



Burning Hours
40K

**LUMENS
PER WATT**
CW - 110
NW - 108
WW - 103



Dimming
Optional



Emergency System
Optional

Applications:
Office, Super Market, Retail Shop, Cafes, Hotels & Restaurants, Home, Library, etc.

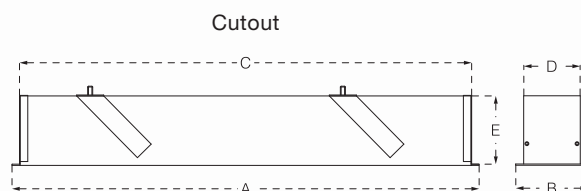


AERO RECESS

Linear led with simple & pure design that delivers excellent light output efficiency and very good glare control.

Electrostatic thermo - painting finished aluminium housing.
High transmittance PMMA Diffuser specialised designed for LED light sources creating a high visual comfort and very uniform lighting distribution.
Seamless continuous lighting system without dark spots.

Code	Wattage	A x B	C x D x E (mm)
ALR 18	18	620 x 95	595 x 75 x 90
ALR 36	36	1215 x 95	1190 x 75 x 90
ALR 72	72	2415 x 95	2390 x 75 x 90



Linkable



Beam Angle
120°



Driver
Inbuilt



Glare-Free



PF
>0.97



Burning Hours
40K

**LUMENS
PER WATT**
CW - 110
NW - 108
WW - 103



Dimming
Optional



Emergency System
Optional

Applications:

Office, Super Market, Retail Shop, Cafes, Hotels & Restaurants, Home, Library, etc.



AERO

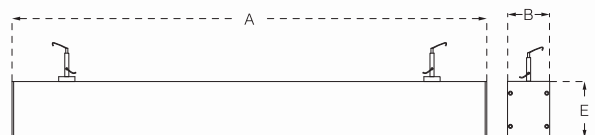
Linear led with simple & pure design that delivers excellent light output efficiency and very good glare control.

Highly finished Anodized aluminium housing.

High transmittance PMMA Diffuser specialised designed for LED light sources creating a high visual comfort and very uniform lighting distribution.

Profile length customizable up to 2400 mm.

Code	Wattage	A x B x E (mm)
ALN 18	18	600 x 70 x 90
ALN 36	36	1200 x 70 x 90
ALN 72	72	2400 x 70 x 90



Linkable



Beam Angle
120°



Driver
Inbuilt



Glare-Free



PF
>0.97



Burning Hours
40K

**LUMENS
PER WATT**
CW - 110
NW - 108
WW - 103



Dimming
Optional



Emergency System
Optional

Applications:

Office, Super Market, Retail Shop, Cafes, Hotels & Restaurants, Home, Library, etc.



AERO UP & DOWN

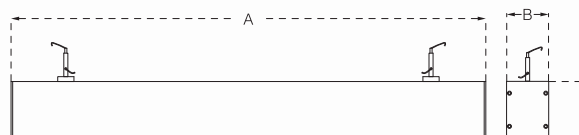
Linear led fitting that combines directional Illuminance with soft Direct & Indirect Illumination delivering task area Illuminance and onto ceiling walls for an uplifting environment.

Electrostatic thermo - painting finished aluminium housing.

High transmittance PMMA Diffuser specialised designed for LED light sources creating a high visual comfort and very uniform lighting distribution.

Seamless continuous lighting system without dark spots.

Code	Wattage	A x B x E (mm)
ALUD 22	7 + 15	600 x 70 x 110
ALUD 36	12 + 24	1200 x 70 x 110
ALUD 72	24 + 48	2400 x 70 x 110



Linkable



Beam Angle
120°



Driver
Inbuilt



Glare-Free



PF
>0.97



Burning Hours
40K

**LUMENS
PER WATT**

CW - 110
NW - 108
WW - 103



Dimming
Optional



Emergency System
Optional

Applications:

Office, Super Market, Retail Shop, Cafes, Hotels & Restaurants, Library, etc.

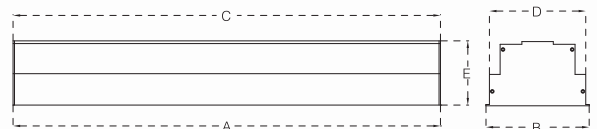


LIGHT ZONE

Linear led with simple & pure design that delivers excellent light output efficiency and very good glare control.

Electrostatic thermo - painting finished aluminium housing.
High transmittance PMMA Diffuser specialised designed for LED light sources creating a high visual comfort and very uniform lighting distribution.
Seamless continuous lighting system without dark spots.

Code	Wattage	A x B	C x D x E (mm)
ALT 36	36	1195 x 145	1185 x 135 x 90
ALT 72	72	2395 x 145	2385 x 135 x 90



Linkable



Beam Angle
120°



Driver
Inbuilt



Glare-Free



PF
>0.97



Burning Hours
40K

**LUMENS
PER WATT**
CW - 110
NW - 108
WW - 103



Dimming
Optional



Emergency System
Optional

Applications:
Office, Super Market, Retail Shop, Cafes, Hotels & Restaurants, Home, Library, etc.



LED STRIP LIGHT

Bright and uniform light, with options for both indoor (3528) and outdoor (5050) applications.

Available in 5m strip lengths with self adhesive tape for easy installation.

Manufactured using high-quality PCB and LED chip for reliability and trouble-free life.

Consistency of colour temperature. Also available with a dimmable driver.

Code	Wattage	W x L
5050 60 12	12	12 x 5 (mtr)
2835 60 12	12	10 x 495 (mm)
2835 120 24	24	12 x 495 (mm)



Burning Hours
30K



Green Energy



CRI
>75



Dimming
Optional



Linkable



Hi Bright

**LUMENS
PER WATT**
CW - 95
NW - 93
WW - 89

Applications:
Hotels, Commercial Restaurants, Cafes and Promotional areas etc.



PROFILES

Sleek Modern design with high quality diffuser & colour options to enhance the surrounding space. Aesthetic appearance is enhanced with plastic end caps.

Highly finished aluminium housing. Extruded acrylic emits spotless, uniform & soft light.

Profile length customizable up to 2 mtr.

Code	Wattage	A x B x E (mm)
Master	12	2500 x 17 x 8
Groovy	14	2500 x 18 x 8
Tub	19	2500 x 19 x 17
Angular 45	24	2500 x 19 x 19



Beam Angle
20°, 40°



Burning Hours
35K



PF
>0.97



THD
<10%



Glare-Free

**LUMENS
PER WATT**
CW - 95
NW - 93
WW - 89



Dimming
Optional



Driver Protection
OVP, Short Circuit, Surge

Applications:
Hotels, Commercial Restaurants, Cafes and Promotional areas etc.

Industrial, Street and Flood Lights



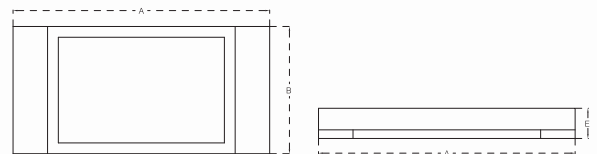


LOWBAY

Linear lowbay is high power suspended luminaire with CRCA sheet steel housing in durable corrosion resistance electrostatic thermo-painting finish. Advanced thermal management technology to ensure consistency of LED life span, colour temperature and maximum lumens.

Emergency battery backup options are available. 1hrs / 3hrs.

Code	Wattage	A x B x E (mm)
ALBS 60	60	800 x 300 x 70
ALBS 80	80	800 x 300 x 70
ALB 80	80	1450 x 300 x 70
ALB 120	120	1450 x 300 x 70
ALB 160	160	1450 x 300 x 70



Hi Bright



Green Energy



Burning Hours
30K



Driver Protection
OVP, Short Circuit, Surge



Driver
Inbuilt

**LUMENS
PER WATT**

CW - 140
NW - 135
WW - 128



CRI
>80



IP
40

Applications:
Industrial Plant, Petrol Pump, Parking Lot, Factory, Textile Mills etc.

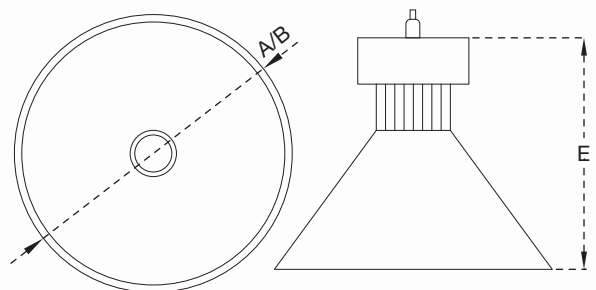


HIGHBAY

A high output led highbay fitting with active cooling & consistent color performance. Aluminum pressure die cast body & heat sink in durable corrosion resistance, anti-fading, anti-scratch electro static thermo painting finish with high purity metallized reflector for optimum light output.

Advanced thermal management technology to ensure consistency of LED life span, colour temperature and maximum output lumens.

Code	Wattage	A	E (mm)
AHB 50	50	310 Ø	360
AHB 100	100	310 Ø	360
AHB 150	150	310 Ø	360



Active Cooling



Hi Bright



Green Energy



Burning Hours
30K



Driver Protection
OVP, Short Circuit, Surge



Driver
Inbuilt

**LUMENS
PER WATT**
CW - 140
NW - 135
WW - 128



CRI
>80

Applications:
Industrial Plant, Petrol Pump, Parking Lot, Factory, Textile Mills etc.



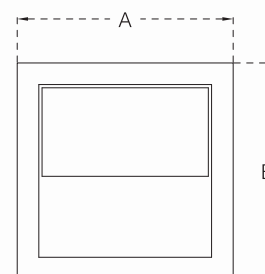
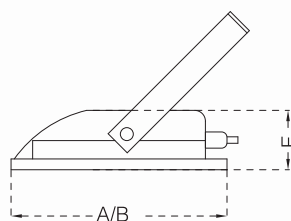
FLOOD LIGHT

Sleek and elegant, specially designed for outdoor application with very wide beam covering a larger area.

Aluminium die-cast housing in durable corrosion resistance, anti-scratch electro static thermo-painting finish.

Excellent ROI with long life and energy efficiency.

Code	Wattage	A x B x E (mm)
AFL 30	30	205 x 205 x 65
AFL 50	50	250 x 250 x 65
AFL 85	85	300 x 300 x 125
AFL 100	100	355 x 355 x 125



**LUMENS
PER WATT**
CW - 100
NW - 98
WW - 93

Applications:
Residential Buildings, Hotels, Industries, Parking lots, Hoardings etc.



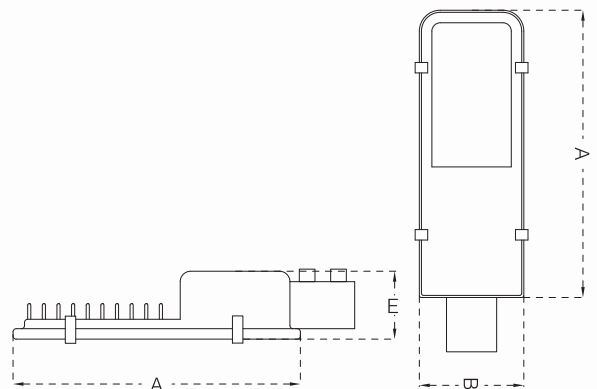
STREET LIGHT

Sleek and elegant, specially designed for outdoor application with very wide beam covering a larger area.

Aluminium die-cast housing in durable corrosion resistance, anti-scratch electro static thermo-painting finish.

Excellent ROI with long life and energy efficiency.

Code	Wattage	A x B (mm)
AST 15	15	275 x 100
AST 30	30	315 x 165
AST 50	50	370 x 215
AST 72	72	370 x 215



Driver Protection
OVP, Short Circuit, Surge



Driver
Inbuilt



Green Energy

**LUMENS
PER WATT**
CW - 100
NW - 98
WW - 93

Applications:
Residential Buildings, Hotels, Industries, Parking lots, Hoardings etc.



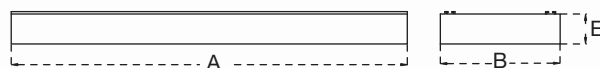
SOLACE

Complete Glare and Shadow free for suspended mounting LED luminaire allowing freedom to arrange luminaires in any position in the room with pleasantly soft and wide -angle light distribution.

Housing made from extruded aluminium with micro prismatic diffuser for maximum efficiency .

Available in both options downlite as well as up downlite customisable upto 2400 mm in single length.

Code	Wattage	A x B x E
ASUD 40	40	1195 x 150 x 50
ASD 40	40	1195 x 150 x 50



Applications:
Office, Super Market, Retail Shop, Cafes, Hotels & Restaurants, Home, Library, etc.



Towards greener tomorrow

COMPLETE LED LIGHTING SOLUTIONS

70, Mangaldas Rd., 12 - Dwarkadas Bldg., 1st Floor, Lohar Chawl, Mumbai - 02

T: +91 22 2200 7856 | **M:**+91 81085 47775

E: info@arcadelighting.com

W: arcadelighting.com