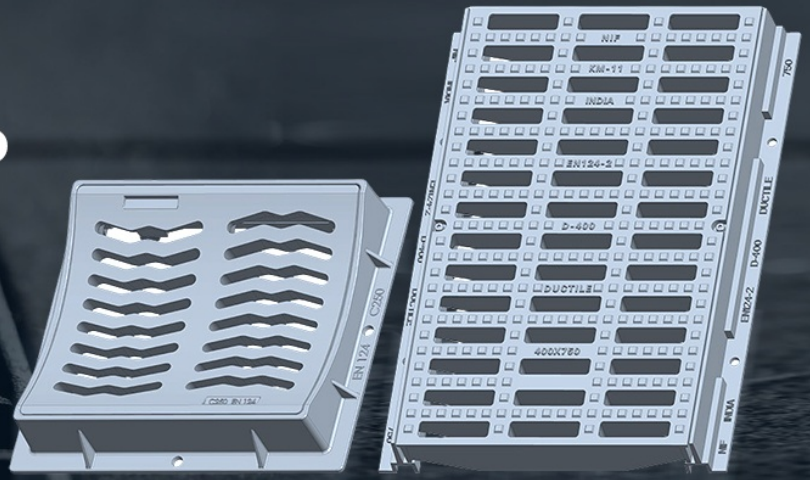




# GRATING **FRAME** AND CHANNEL GRATE

YOUR SERVICE, YOUR SATISFACTION.



Avk Surface Box, Black Iron Recessed Manhole Cover, Cast Iron Casting, Cast Iron Grate, Cast Iron Surface Box, Cast Iron Tactile Plates, Cast Iron Tree Grate, Cast Iron Valve Box, Circle Galvanized Steel Grate, Cleansing Pipe Fitting, Commercial Tactile Plate, Cona Modular Surface Box, Concrete Valve Box, Conduit Lock Nut, Custom Tree Grate, etc.



**SOLID COUNTER WEIGHT**



**HEAVY DUTY COUNTER WEIGHT**



**INDUSTRIAL COUNTER WEIGHT**



## About Us

Established in the year 1955, N I F Ispat Limited is an ISO certified organization which was formerly known as Nandikeshwari Iron Foundry (P) Ltd. The company is one of the oldest producers of Grey Iron and Ductile Iron Castings in the Indian market. With our four foundries in Eastern India, we are supported by highly experienced and qualified engineers who are experts in their respective fields. The company has the capacity to produce 36,000 MT annually.

We at NIF, strive to combine modern technology with traditional skills to produce top-class Marine Bollard, Mild Steel Industrial Casting, Outdoor Bench, Step Iron, Solid Counter Weight, Rectangular Shape Galvanized Steel Grate, etc. We as a respectful manufacturer and supplier; are committed to follow stringent quality control measures and ensure timely delivery of the goods. Our company is producing both precision and heavy-duty items in confirmation to the international standards. With the optimum utilization of the resources, we have attained a sustainable growth in the Indian market and achieved a long-standing position in the market.



**Key Facts**

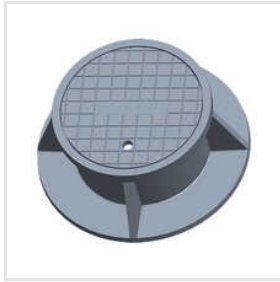
<b>No of Staff</b>	250
<b>Year of Establishment</b>	1955
<b>No of Production Lines</b>	4
<b>OEM Service Provided</b>	No



**Our Products**



**Circle Galvanized Steel Grate**



**Round Meter Box Parts**



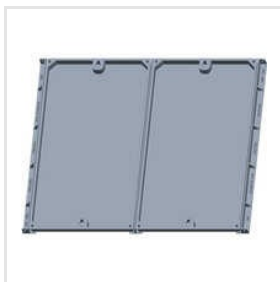
**Trench Grates**



**Single Tee Fitting**



**Cast Iron Grate**



**Durafit Manhole Cover**



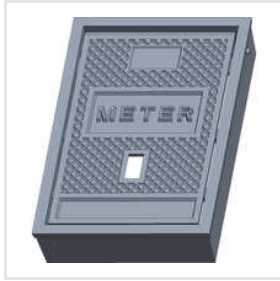
**Metal Bar Grate**



**Silver Grate**



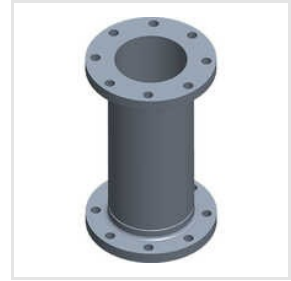
**Square Catch Basin Grate Galvanized Steel**



**Meter Box Body**



**Cleansing Pipe Fitting**



**Joint Pipe Fitting**



**Conduit Lock Nut**



**Rectangular Shape Galvanized Steel Grate**



**Square Galvanized Steel Grate**



**Equal Tee Fitting**



ADDRESS  
**P260, 261, 261/1, Benaras Road,  
Dist- Howrah, Howrah, West  
Bengal, India (711108).**



EMAIL  
**sales@nifl.com**



MOBILE  
**+919330845546**



WEBSITE  
**nifispat.tradeindia.com**

KEY PERSONNEL  
**Mukesh Parashar**  
(SALES MANAGER)