

CYLINDRICAL SHANK COLLET CHUCK

(For ER Collet)

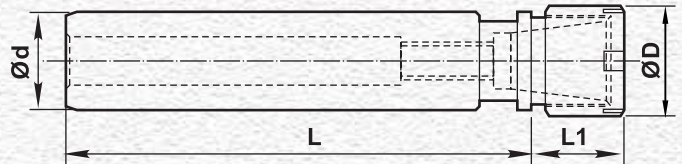


FIG. 1 : With M Type Nut

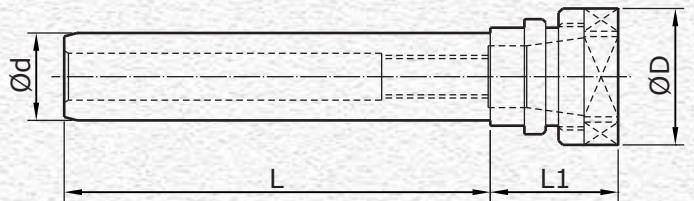


FIG. 2 : With Hex. Type Nut

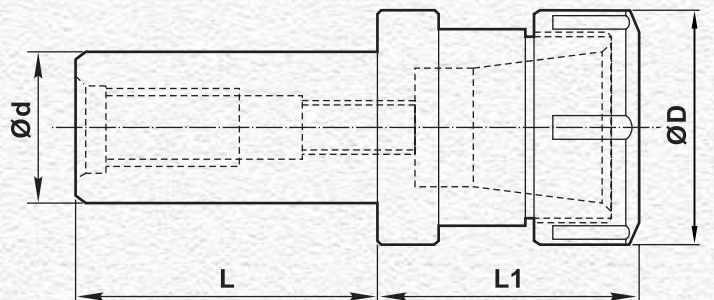


FIG. 3 : With Round Type Nut

Part No.	Ød mm	ØD mm	L mm	L1 mm	Suitable Collet	Nut	Fig.
CSCC 16xER11Mx60L	16	16	60	16.5	ER-11	M-Type	1
CSCC 16xER11Mx100L	16	16	100	16.5	ER-11	M-Type	1
CSCC 16xER11Mx150L	16	16	150	16.5	ER-11	M-Type	1
CSCC 16xER11Hx60L	16	19	60	16.5	ER-11	Hex. Type	2
CSCC 16xER16Hx60L	16	28	60	38.5	ER-16	Hex. Type	2
CSCC 16xER16Hx100L	16	28	100	38.5	ER-16	Hex. Type	2
CSCC 16xER16Hx150L	16	28	150	38.5	ER-16	Hex. Type	2
CSCC 20xER16Mx60L	20	22	60	25.5	ER-16	M-Type	1
CSCC 20xER16Mx100L	20	22	100	25.5	ER-16	M-Type	1
CSCC 20xER16Mx150L	20	22	150	25.5	ER-16	M-Type	1
CSCC 20xER20Hx60L	20	34	60	38.5	ER-20	Hex. Type	2
CSCC 20xER20Hx100L	20	34	100	38.5	ER-20	Hex. Type	2
CSCC 20xER20Hx150L	20	34	150	38.5	ER-20	Hex. Type	2
CSCC 25xER20Mx60L	25	28	60	27.5	ER-20	M-Type	1
CSCC 25xER20Mx100L	25	28	100	27.5	ER-20	M-Type	1
CSCC 25xER20Mx150L	25	28	150	27.5	ER-20	M-Type	1
CSCC 25xER20Hx100L	25	34	100	25.5	ER-20	Hex. Type	2
CSCC 25xER25Rx60L	25	42	60	53	ER-25	Round Type	3
CSCC 32xER25Mx60L	32	35	60	28.0	ER-25	M-Type	1
CSCC 32xER25Mx100L	32	35	100	28.0	ER-25	M-Type	1
CSCC 32xER25Mx150L	32	35	150	28.0	ER-25	M-Type	1
CSCC 32xER16Hx65L	32	28	65	46	ER-16	Hex. Type	2
CSCC 32xER20Hx65L	32	34	65	45.5	ER-20	Hex. Type	2
CSCC 32xER25Rx65L	32	42	65	53	ER-25	Round Type	3
CSCC 32xER32Rx65L	32	50	65	61.0	ER-32	Round Type	3
CSCC 40xER20Hx85L	40	34	85	47.5	ER-20	Hex. Type	2
CSCC 40xER25Rx85L	40	42	85	55	ER-25	Round Type	3
CSCC 40xER32Rx85L	40	50	85	53.0	ER-32	Round Type	3
CSCC 40xER40Rx85L	40	63	85	62.0	ER-40	Round Type	3