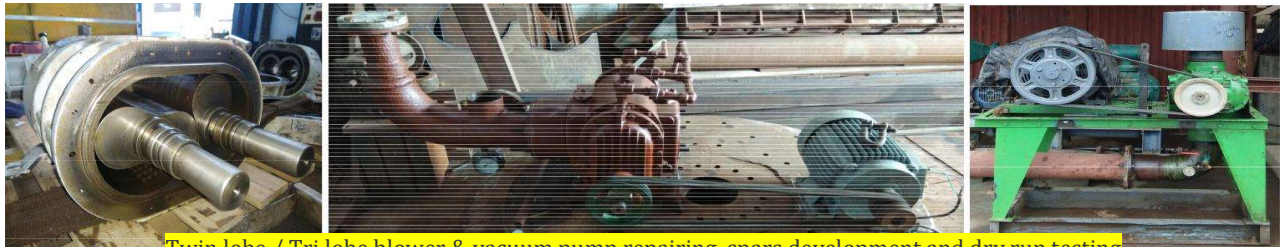


➤ **Known For:**

- Hands on Experience of Manufacturing of Static, dynamic & conveying components of Nuclear power plant, Gas, Coal and hydro based power plant, Powder, Chemical, Pulp & paper and Food processing plant.
- Mastery in all types of mechanical maintenance & shutdown work of Critical Spares and equipment of auto plant
- Manufacturing and fabrication of SPM & components, Vessel, Silo and process engineering component.
- Engineering valuation, Calibration and chartered engineer certification provider.
- Insitu machining, Boring, drilling, grinding, milling, plane honing services provider.
- Site fabrication and Shutdown supports with skilled technical crew.



Twin lobe / Tri lobe blower & vacuum pump repairing, spars development and dry run testing

➤ **Business Areas:**

- **Manufacturing** of Spares for process equipment spares like Shaft, gear box gears & worm shaft, rubber rollers and steel roll, rubber rollers guide rolls, unwinder sleeves for plastic, pulp & paper industry, etc.
- **Fabrication** of material storage tank, silos, Belt and Screw Conveyor, material handling trolley, strainers, free gravity conveyors, Tubular lifting beam, Acoustic hood with Silencer accessory set for Bare Blower of ITO Japan from Channel partner.
- **Maintenance** of High capacity lobe blowers, centrifugal blowers, vacuum pump, Agitator lantern assemblies, High speed Gear box, bearing housings, shafts, rollers etc.
- **Insitu** machining, drilling, boring, milling and grinding as per customer requirement.
- **Reverse engineering & development** as per customer requirement.

With above strength and able team, we have capacity to provide prompt and versatile services at one stop.

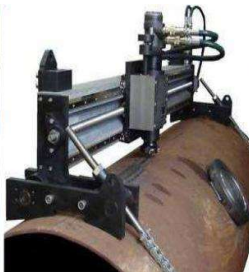
We stand guaranty for the Quality of material and Workmanship for the equipment and spares supplied by us for desired function.



INSITU GRINDING



INSITU BORING



INSITU MILLING



INSITU MILLING



INSITU DRILLING

➤ LEGAL RAGISTRATION OF ENTITY:-

GST TIN No.	24AHZPP0243J1ZZ
GST No.	24191602356, Dates: 30 / 09 / 2005
CST No.	24691602356, Dates: 20 / 09 / 2007
SERVICE TAX No.	AHZPP0243JSD001
PAN No.	AHZPP0243J
MSME UDYOG AADHAR MEMORUNDAM	GJ24E0001998



➤ WORKSHOP OVERVIEW:

**Suhani Enterprise** has acquired an industrial space of 4000 Sq. ft. Makarpura GIDC, Vadodara [Gujarat State, INDIA] having covered shed facility.

➤ BASIC FACILITY OVERVIEW

- 4000 Sq. ft. concrete flooring with covered shed.
- 10 Ton EOT crane, 1 Ton manual & 1 Ton hydraulically operated cranes for material handling.
- 85 HP power available for industrial use.

➤ LIST OF MACHINERY

SR. NO.	DESCRIPTION	QTY.
1	Cylindrical grinding machine / Roll grinder Make: - Norton- USA, Size: 4000MM bet'n centre X 680MM Dia. (+100MM Max.) OD grinding capacity	1
2	Horizontal Boring m/c with DRO Make: - TOS, Spindle Ø 100MM, [2550 LG. X 1600 CR. X 1250HT.]MM	1
3	M1TR Milling machine - heavy duty	1
4	LATHE m/c, 4000 MM lg., Spindle Ø100 ID, Max. Ø400MMOD Machining capacity	1
5	LATHE m/c 08 ft. long, Spindle Ø50 ID, Max. Ø680 MMOD Machining capacity	1
6	LATHE m/c 10 ft. long, Spindle Ø50 ID, Max. Ø400 MMOD Machining capacity	1
7	LATHE m/c 04 ft long	1
8	Column Drilling m/c 1"	1
9	Circular Hacksaw m/c 8 inch up to dia. 200mm	1
10	Welding Rectifier, Capacity up to 400AMP	1
11	EOT Crane - capacity - 10 Ton	1
12	Hydraulically operated movable crane :- 1 Ton capacity	1
13	Profile Cutting facility	1
14	Bench Grinder	2
15	A G-7 Hand Grinder	2
16	A G-5 Hand Grinder	2
17	A G-4 Hand Grinder	2
18	Chain Block 5 TN Capacity	1
19	Chain Block 2 TN Capacity	1

20 Spares and tools

As req.

➤ **List of Measuring Instruments**

SR. NO.	DESCRIPTION	Limit	QTY.
1	Outside Micrometre	[ 0 – 25 ] MM [25 – 50 ] MM [50 – 75 ] MM [75 – 100] MM [100 – 200] MM [200 – 400] MM	1
2	Vernier Calipers	6", 8", 12", 24", 1000MM	1
3	Bore Gauge	16 – 600 MM	1
4	Bevel Protector / Combination Set 1 set 1	1 set	1

**Our satisfied clients will bring us others . . . . .**

**Nuclear Power Corporation of India [NPCIL]**  
**Department of Atomic Energy [DAE]**  
**Indian Railway [IREPS]**  
**Indian Oil Corporation Ltd. [IOCL]**  
**L&T Hydrocarbon Engineering Limited**  
**J P HYDRO, Sardar Sarovar Project**  
**GSECL – Wanakbori Thermal Power Plant**  
**GIPCL – Surat Lignite Power Plant**  
**United Phosphorus Ltd., Halol**  
**L&T Electrical & Automation**  
**Bell Granito & Ceramic Ltd.**  
**Deepak Nitrite Limited**  
**Steelco Gujarat Ltd.**  
**LubiGel Corporation**  
**CEAT Tyres Ltd.**  
**Cosmo films Ltd.**  
**20 Microns Ltd.**  
**IDMC Ltd.**  
**Zydus cadila**  
**&**  
**Many more . . . . .**



Column Drill



Horizontal Boring M/C



4 Mtr. Long Lathe



M1TR Milling M/c

➤ **Team Suhani Enterprise:**

- **Mr. Haribhai B Patel – Managing director**  
40+ Years of engineering experience in Manufacturing, Fabrication and maintenance work.
- **Mr. Amit H Patel – Business Development executive and workshop in charge**  
9+ Years of Engineering experience in Design, Manufacturing, Fabrication and maintenance

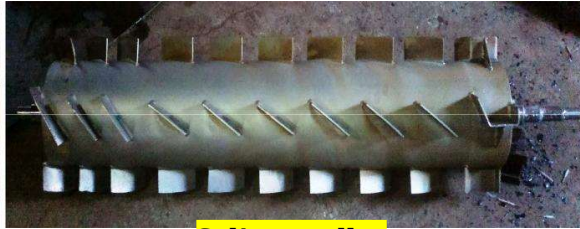
**Chartered Engineer and Valuer - Mechanical side**

**Executive committee member & Joint secretary of Institution of Engineers India – Vadodara chapter**

With skilled and experienced roll grinder operator, Horizontal boring machine operator, Turner, Welder, Fitter and helper to deliver quality work within time limit.



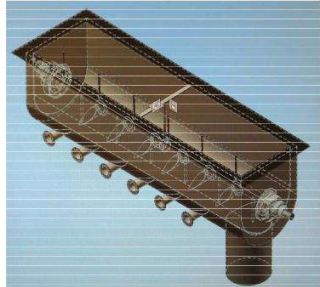
**9 meter roll Bearing  
Size development**



**Splitter roller**



**Precision keyway**



**3D Modelling of screw  
Conveyor**



**Impellor**



**Silos**



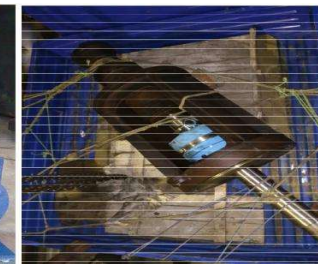
**Centrifugal blower  
development & testing**



**Silencer set assy  
For ITO Japan**



**Jacketed screw**



**Agitator lantern assy.**



**Hydraulic  
Power pack**



**Gas Cutting**



**Welding**



**Brazing**



**Color coating**

➤ **Glimpse of some valuable work done:-**

 **NPCIL**

- ✓ SS 304/ 316 Shim rolls, Ready cut shim, precut shim in various thickness and size for NAPS & Other units.
- ✓ Heavy duty workbench for KAPS, Kakrapar unit
- ✓ I2P converter terminal box for KAPS unit.
- ✓ Various dead weight.
- ✓ Shielding plug machining and grinding for KAPS [Third party work]
- ✓ Providing 0.5% Palladium coated alumina pallets for loop system in various units. [Thirty party supply]
- ✓ LP Rotor stand, used fuel tray, & storage tanks fabrication.
- ✓ Supplier of SS 304 Barrels in various for heavy water storage, chemical storage.
- ✓ Development of Sea water pump impellers, centrifugal impellor, blower impellor and air curtain impellor as per required customization in SS 316, 304, Aluminum and MS- GI material.
- ✓ Providing engineering valuation and calibration service of Cranes, Dead weight, storage silos, used machineries, And for loss asset management with factory shade fitness certification. [Chartered engineer certification]

 **IOCL**

- ✓ SS 304/ 316 Shim rolls, Ready cut shim, precut shim in various thickness and size for Gujarat refinery.
- ✓ Development of USA imported injection quill for chemical application

 **Indian railway**

- ✓ Development of Wheel set trolley for seized wheel of loco for broad gauge line and Nero gauge line.
- ✓ Development of Rail claw for maintaining rail track gauge.
- ✓ Nylon bush for rolling shutter for parcel wan.
- ✓ Calibration and valuation for cranes, work shop machinery valuation(Annual bases), and dead stock inventory valuation (Annual bases)

 **DAE**

- ✓ Providing machining, grinding, honing, straightening of extruded and annealed Zircoloy solid blanks. [Third party work]
- ✓ Supply of SS 304 closed lid drum [third party supply]
- ✓ Supply of ceramic blanket [third party supply]

 **DEEPAK NITRITE LTD.**

- ✓ Providing critical spares development of agitator lantern assembly, glass lined reactor, gear box repairing, shaft development etc.
- ✓ Fabrication of Storage tank, storage silos and material tray from SS 316L Material.

 **L&T Hydrocarbon Engineering**

- ✓ Providing critical spares development and providing Insitu machining, drilling, boring, milling, and facing services on plant site as per erection and commissioning recommendation.

 **L&T switchgear**

- ✓ Providing critical spares development of silver plating plant components like Flexible electro contact rubber bushes, dryer fluid bed, scrubber impellor, Shear plates, Pressure plates, etc.

CHARTERED ENGINEER & ENGINEERING CONSULTANT

**SUHAN ENTERPRISE**

PROCESS PLANT EQUIPMENT MANUFACTURING AND MACHINERY BRAKE DOWN SERVICES

Address: - 502- A/2, B/H J.K METAL, G.I.D.C, MAKARPURA, VADODARA-390010, GUJARAT, INDIA

Contact No.:- Mr. HARIBHAI B PATEL  
9825856159, 9265972062

Mr. AMIT H PATEL [C. Eng.]  
9712987959, 8200537661

E-Mail: - [hbpatel.se@gmail.com](mailto:hbpatel.se@gmail.com)

**Cosmo Films Ltd., Jash Packaging, Shankar Packaging**

- ✓ Providing critical spares development plastic line guide rollers, unwind rollers, atlas rolls, PVDC Rolls, and coiler rolls.
- ✓ Everest and barratti make lobe compressor critical overhauling and spares development.
- ✓ Bonfingloli make radicon make gearbox repairing.
- ✓ Complete redevelopment of winder and unwinder assembly machine for glue mix film.
- ✓ Corrugated, pulp and paper mill rollers development with complete hard chrome plating and grinding [capacity up to Ø450, Ø700, Ø1000MM & Ø1200MM in max. 9000MM Length roller with rubberizing]
- ✓ Development and manufacturing of MDO nip roll, robber rolls, PVDC guide rolls, Steel roll for Atlas and Bruckner as per requirement.
- ✓ Air expander chuck sleeve for unwind of BOPP and PP films up to 9 meter length in Aluminum & SS316.
- ✓ Development of blade holders and knife holders as per sample.
- ✓ Critical maintenance of film lump filter with respect to removal of broken 12.9 grade bolts and redevelopment of thread cavity by new PB 2 bush plugging, brazing, rethreading as per original one.
- ✓ Fabrication and development of tubular lifting beam of capacity 2 Ton, 4 Ton, 6 Ton, 8 Ton, 10 Ton with load calibration of Form 10, 11.
- ✓ Development of Guide roll, still roll, Teflon coated rolls etc. for Plastic, Pulp and paper mills.

