



STONE ***COLOR SORTER***



COMPANY INTRODUCTION



RAVINDER MANN
(CEO)

Big things have small beginnings. So does Unique color Sorter is synonymous with the color Sorting Industry in Asia. Unique color Sorter was born in a humble way 11 years back. Founded by visionary technocrat **Mr Ravinder Mann** with a experience of 20 years of sorting Machines .Unique color Sorter invested in sorting machines when the industry was at very nascent stage and grain sorting was not known to most millers. Unique color Sorter has been at the forefront in creating awareness and acceptance of sorting grains among Indian millers. Setting the vision for Indian Grain industry, Unique color Sorter has been leading the way in every aspect for other manufacturers follow. It is therefore not surprising that Unique color Sorter has the largest installed base of over 3700 customers from east to west and north to south covering maximum grains and commodities.

Our Vision

Our Vision is to ensure a positive and operating result all industrial and agricultural processing plants.

Our Mission

Supplying machinery and turnkey plants which promise maximum return-on-investment (ROI) and minimal operating cost. Being one of the most technological, mechanical and technical leaders in agricultural processing plants. Being a challenging and attractive place to work.

OUR PRODUCTS



UCZ 1440-1D
SINGLE LAYER FOR DRY ORE



UCZ 1504-1Z
SINGLE LAYER FOR WET ORE



UCZ 1920-1D
FOR BIG SIZE ORE



UCZ 1440-2D
DOUBLE LAYER FOR DRY ORE



CU3008-1Z
SINGLE LAYER FOR POWER ORE



CU1680-2Z
DOUBLE LAYER FOR POWER ORE



CU2560-1G
VERTICAL FOR SMALL SIZE ORE



UC1680-1G
FOR SALT

Near Sector-3, Extn. Bazida Road,
Karnal -132001 (Haryana)
Contact : 0184- 4066066

web : www.uniquesorter.com
www.uniquecolorsorter.com
E-mail : info@uniquecolorsorter.com
https : [//www.facebook.com/uniquesorter](https://www.facebook.com/uniquesorter)



UCS16 FOR COAL

UNIQUE COLOR SORTER PVT. LTD.

SINGLE LAYER DRY SORTING MACHINE



UCZ 1440-1D

Features

1. Solving the problem of sorting in the harsh environment of dry ore with high dust, high pollution and high corrosion
2. The ore size sorting range is from 26 mesh to 4cm.
3. Fast belt, greatly improve the processing capacity of the machine, the output increased by more than 50%.

SORTING APPLICATIONS



Barite Accept



Barite Rejected



Potash feldspar Raw



Potassium feldspar Accept



Quartz sand Raw



Quartz sand Accept

DOUBLE LAYER DRY SORTING MACHINE



UCZ 1440-2D

PARAMETERS

MODEL	UCZ 1440-1D		UCZ 1440-2D		UCZ 1920-1D		UCZ 1920-2D	
Layer	Single		Double		Single		Double	
Throughput(T/H)	1-4 cm	8-15 (t/h)	1-4 cm	8-15(t/h)	1-4 cm	15-26(t/h)	1-4 cm	15-26(t/h)
	4-8 mesh	5-9(t/h)	4-8 mesh	5-9(t/h)	4-8 mesh	8-18(t/h)	4-8 mesh	8-18(t/h)
	8-16mesh	3-7(t/h)	8-16mesh	3-7(t/h)	8-16mesh	4-10(t/h)	8-16mesh	4-10(t/h)
Carryover Ratio(bad:good)	> 10:1		> 10:1		> 10:1		> 10:1	
Accuracy(%)	≥99%		≥99%		≥99%		≥99%	
Voltage(V/Hz)	220V/50HZ		220V/50HZ		220V/50HZ		220V/50HZ	
Power(KW)	4		7.5		4.8		9	
Air pressure(Mpa)	0.6~0.8		0.6~0.8		0.6~0.8		0.6~0.8	
Air consumption(L/min)	≥3000		≥6000		≥4000		≥8000	
Weight(Kg)	1250		2450		1650		3200	
Dimension(mm)	2977*2403*1734		3562*2403*2734		2977*2883*1734		3562*2883*2734	

POWDER SINGLE LAYER SORTING MACHINE



CU3008-1Z

SCOPE OF APPLICATION

- 1、 The vertical chute solves the problems of ore and belt bonding during the fine ore sorting process.
- 2、 The sorting of a wide range of fine ore particles size ranging from 26 mesh to 120 mesh.

SORTING APPLICATIONS



Quartz sand raw material 26-40 mesh



Quartz sand Accept 26-40 mesh



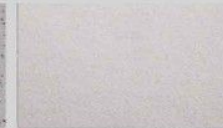
Quartz sand raw material 40-70 mesh



Quartz sand Accept 40-70 mesh



Quartz sand raw material 70-120 mesh



Quartz sand Accept 70-120 mesh



High purity fused silica stone

POWDER SINGLE LAYER SORTING MACHINE



Features:

1. Double-layer sorting, low carryover ratio, high accuracy.
2. The chute is made of high-density alloy material, which is resistant to abrasion and scratches.
3. Low air consumption, ultra-high frequency ejectors, greatly reducing the ratio of rejections, with anti-dust in dust fog environment.
4. Suspension type cleaning device can also show high sorting accuracy in high dust environment.
5. Single chute with four-view cameras, 128 nozzle design, the highest configuration in the industry.

PARAMETERS

MODEL	CU1504-1Z		CU1504-2Z		CU2256-1Z		CU3008-1Z		CU1680-2Z		CU2240-2Z	
Throughput(T/H)	26-40 mesh	3-5 t/h	26-40 mesh	3-5 t/h	26-40 mesh	4-8 t/h	26-40 mesh	5-10 t/h	26-40 mesh	3.5-5.5 t/h	26-40 mesh	4-7 t/h
	40-70 mesh	2-4 t/h	40-70 mesh	2-4 t/h	40-70 mesh	3-6 t/h	40-70 mesh	4-8 t/h	40-70 mesh	2.5-4.5 t/h	40-70 mesh	3-5.5 t/h
	70-120 mesh	1-2 t/h	70-120 mesh	1-2 t/h	70-120 mesh	1.5-3 t/h	70-120 mesh	2-4 t/h	70-120 mesh	1.5-2.5 t/h	70-120 mesh	2-3 t/h
Carryover Ratio(bad:good)	30:1		30:1		30:1		30:1		30:1		30:1	
Accuracy(%)	≥99%		≥99%		≥99%		≥99%		≥99%		≥99%	
Voltage(V/Hz)	220V/50HZ		220V/50HZ		220V/50HZ		220V/50HZ		220V/50HZ		220V/50HZ	
Power(KW)	3.25		6.1		4.7		6.3		7		8.8	
Air pressure(Mpa)	0.6~0.8		0.6~0.8		0.6~0.8		0.6~0.8		0.6~0.8		0.6~0.8	
Air consumption(L/min)	≥2000		≥4000		≥3000		≥4000		≥3600		≥4800	
Weight(Kg)	1600		2400		2100		2600		2350		3150	
Dimension(mm)	2330*1885*1759		2330*2250*2609		3110*1857*1772		3890*1730*1760		2814*2029*2609		3253*2029*2609	

LARGE SIZE SORTING MACHINE



TECHNICAL APPLICATION

Suitable for raw ore size between 20-100mm sorting operations, completely replace the artificial hand selection.

Wet operation can be carried out, and sorting can also be performed on the water-containing ore.

Based on the difference in the color of the ore, to achieve metal ore, non-metallic ore preselection, roughing operations

Features

1. Achieve big size ore sorting (20-100mm) by adopting China domestic initiative energy aggregating ejectors.
2. Ultra-wide track conveyor, large output, and stable.
3. The new shadowless light technology, solve the problem of large particle ore shadow, greatly improve the recognition rate.
4. Advanced AI algorithm for intelligent sorting of complex materials.

PARAMETERS

MODEL	UCZ1920-1D
Layer	Single
Throughput(T/H)	20-50
Ore size(mm)	20-80
Accuracy(%)	≥99%
Voltage(V/Hz)	220v/50hz
Power(KW)	6.4
Air pressure(Mpa)	0.6~0.8
Air consumption(L/min)	≥12000
Weight(Kg)	1700
Dimension(mm)	2937*2883*1620

SINGLE LAYER WET SORTING MACHINE



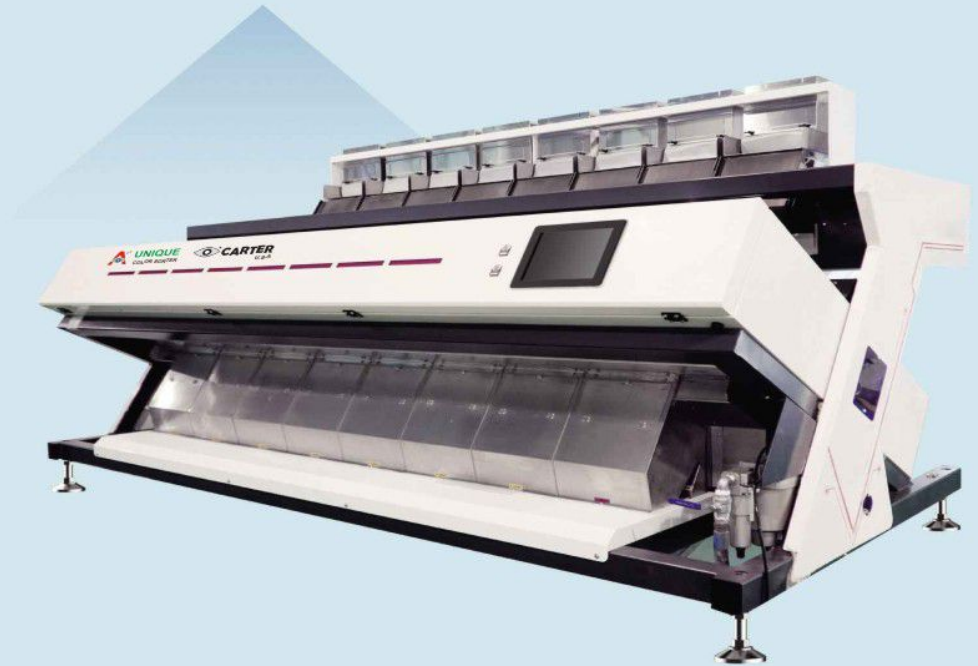
PARAMETERS

MODEL	UCZ1504-1Z	
Layer	Single	
Throughput(T/H)	1-3cm	6-10(T/H)
	3-5cm	8-13(T/H)
Carryover Ratio(bad:good)	10:1	
Accuracy(%)	≥99%	
Voltage(V/Hz)	220V/50HZ	
Power(KW)	5.7	
Air pressure(Mpa)	0.6-0.8	
Air consumption(L/min)	≥5000	
Weight(Kg)	1850	
Dimension(mm)	3788*2360*2125	

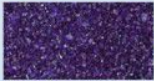
Features

1. In the process of wet ore sorting can solve the difficult problems of ore bonding, ore and track bonding .
2. The sorting range is from 1 cm to 5 cm, depending on the sorting of large particles, wet ore.
3. A new generation of artificial intelligence recognition and rejection algorithms that greatly improve the recognition rate of waterborne materials and reduce the carryover ratio.
4. Shadowless technology and invisible light path design to ensure efficient and stable operation of equipment.

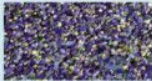
SMALL SIZE SORTING MACHINE



Sorting Application



Azurite Accept



Azurite Reject



Calcium carbonate Accept



Calcium carbonate Reject

Features:

1. Aiming at the characteristics of low-hardness ore materials such as 0.5 mm ~ 6 mm calcium carbonate, High-end customization, greater output, and higher returns.
2. Smart vacuum + smart dust removal system + AI defogging algorithm, it can also perform excellent sorting performance in high dust environment.
3. Internet + mobile phone APP makes operation and maintenance more convenient.

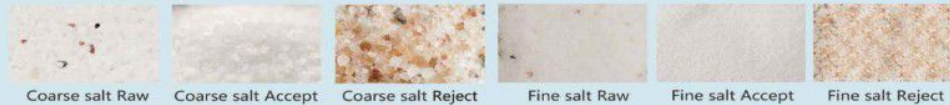
PARAMETERS

MODEL	UCS2560-1G
Structure type	Vertical
Ore Size	0.5mm-6mm
Throughput(T/H)	2.5-8
Carryover Ratio(bad:good)	3:1
Accuracy(%)	≥99%
Voltage(V/Hz)	220V/50HZ
Power(KW)	4.4
Air pressure(Mpa)	0.2-0.6
Weight(Kg)	2060
Dimension(mm)	3593*1750*1971

SALT SORTING MACHINE



Sorting Application



Coarse salt Raw

Coarse salt Accept

Coarse salt Reject

Fine salt Raw

Fine salt Accept

Fine salt Reject

PARAMETERS

MODEL	UCS 1680-1G
Structure type	Vertical
Ore Size	8mesh-120mesh
Throughput(T/H)	1.5-5
Carryover Ratio(bad:good)	20:1
Accuracy(%)	≥99%
Voltage(V/Hz)	220V/50HZ
Power(KW)	3.2
Air pressure(Mpa)	0.2-0.6
Weight(Kg)	1840
Dimension(mm)	2685*1854*1997

Features:

1. The fifth-generation FPGA chip is more efficient.
2. The design of the dissipative light path is equipped with a special AI algorithm for salt, and the recognition is more subtle.
3. The new air suspension high frequency ejectors makes the removal more precise.
4. Food grade stainless steel body, more stable operation.
5. Internet + mobile APP, more convenient operation.

COAL SORTING MACHINE



FEATURES

Multispectral Imaging Technology

In different energy bands
Realize the graphical analysis of
minerals,
Recognition is more accurate.

Full scene recognition algorithm

One-click customized
differentiated coal sorting
scheme,
Achieve best results quickly.

Multiple Dimensions Analysis Technology

From density, color, shape, texture
Differentiating coal and gangue in
multiple dimensions, Easily respond to
changes in coal seams.

Intelligent control

Collect equipment status data in real
time,
Realize remote training, remote
operation, and remote alarm.

01 Pre-remove Gangue

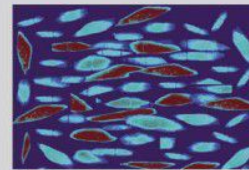
02 Replace Coal Washery

03 Remove Gangue Underground

04 Recycle Coal from Waste Gangue

SORTING APPLICATIONS

UCS intelligent dry sorter for coal is a combination system of X-ray imaging, air injection and big data processing technologies, deeply identifies different coal quantities and automatically rejects gangues & other objects from coal. Great output, high precision, Sorting creates value!



COAL AND GANGUE
AFTER BIG DATA PROCESSING



LUMP COAL
AFTER SORTING



GANGUE
AFTER SORTING

UCS -16

Belt Width(mm)	1600
Capacity(t/h)	190-150
Coal Diameter(mm)	500-20
Plant Type(Mt/a)	2.3-3.2



PARAMETERS

Model	Belt Width (mm)	Capacity (t/h)	Coal Diameter (mm)	Plant Type (Mt)
UCS -12	1200	150-80	500-20	1.6-2.3
UCS -14	1400	160-120	500-20	2.1-2.5
UCS -18	1800	200-160	500-20	3.0-3.8
UCS -24	2400	260-190	500-20	3.8-5.0
UCS -32	3200	320-250	500-20	5.2-6.6