

## For Multi-Port Connection (Manual)

# Multi Cupla MAM Type

Multiple air port system

Working pressure



0.7 MPa  
(7 kgf/cm<sup>2</sup>)

Valve structure



One-way shut-off

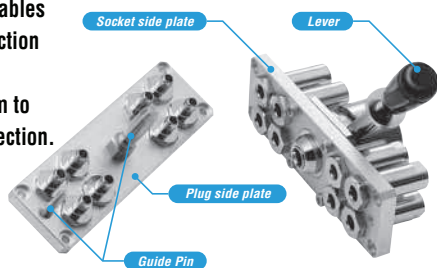
Applicable fluid



Air

**Simultaneously connects several ports securely in one operation!  
Greatly cuts cycle time in multiple ports replacement.**

- Handles several ports at once.
- Simple action with lever enables easy connection / disconnection manually.
- Comes with lock mechanism to prevent accidental disconnection.
- Valve on socket side only.



### Specifications

Body material	Cupla : Brass (Chrome-plated)		
	Plate : Aluminum alloy (4, 8, 12 ports) / Plate : Steel (16 ports) Locking unit : Steel and others		
Size (Thread)	Rc 1/8		
Working pressure	MPa	0.7	
	kgf/cm <sup>2</sup>	7	
	bar	7	
	PSI	102	
Seal material	Nitrile rubber	NBR (SG)	Working temperature range
Working temperature range	-20°C to +60°C		

### Max. Tightening Torque

Nm (kgf·cm)

Torque	5 {51}
--------	--------

### Interchangeability

No connection is possible between plates with different number of ports.

### Min. Cross-Sectional Area

(mm<sup>2</sup>)

Per port	15.9
----------	------

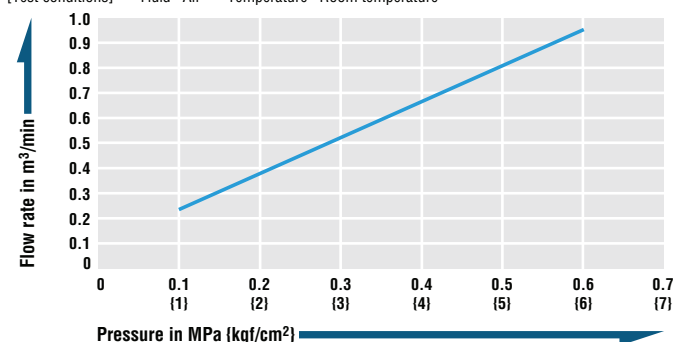
### Suitability for Vacuum

Not suitable for vacuum application in either connected or disconnected condition.

### Pressure - Flow Characteristics

Per port with Cupla

[Test conditions] • Fluid : Air • Temperature : Room temperature



### Models and Dimensions

WAF : WAF stands for width across flats.

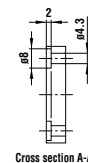
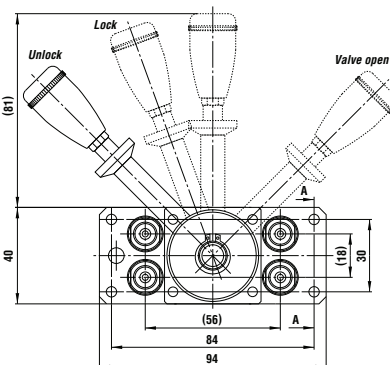
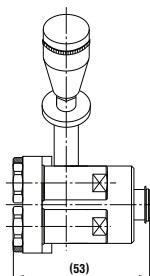
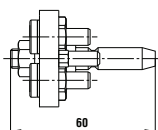
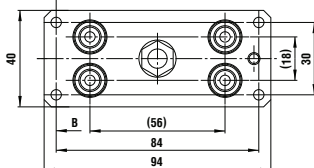
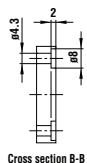
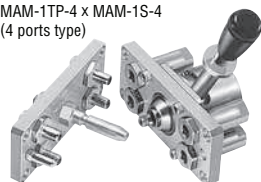
#### Model MAM-1TP-4 × MAM-1S-4 (4 ports type)

Application: R 1/8 Mass: 150 g (Plug), 500 g (Socket)

Plug: Model **MAM-1TP-4**

Socket: Model **MAM-1S-4**

MAM-1TP-4 × MAM-1S-4  
(4 ports type)



Dimensions (mm)

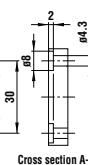
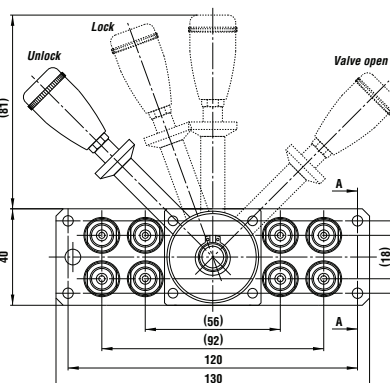
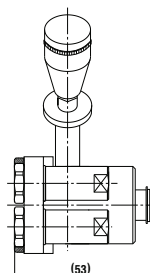
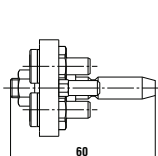
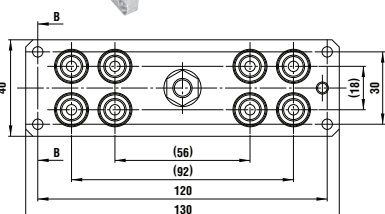
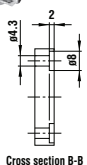
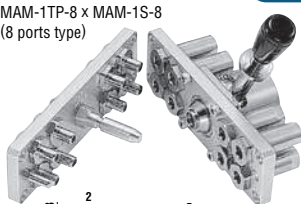
#### Model MAM-1TP-8 × MAM-1S-8 (8 ports type)

Application: R 1/8 Mass: 250 g (Plug), 650 g (Socket)

Plug: Model **MAM-1TP-8**

Socket: Model **MAM-1S-8**

MAM-1TP-8 × MAM-1S-8  
(8 ports type)



Dimensions (mm)

Model MAM-1TP-12 x MAM-1S-12 (12 ports type)

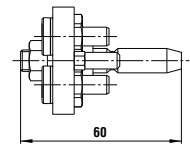
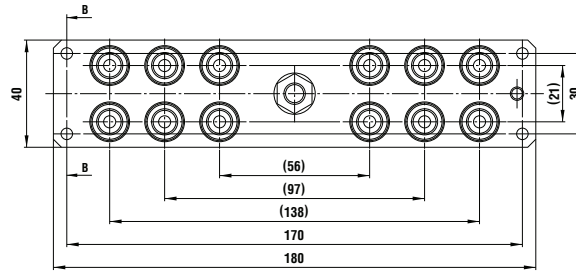
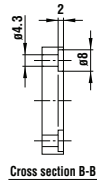
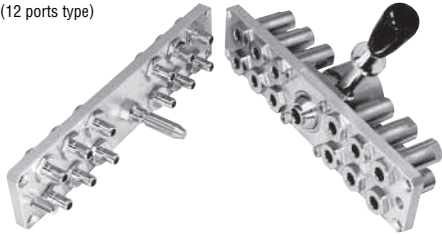
Application: R 1/8

Mass: 350 g (Plug), 800 g (Socket)

Plug: Model

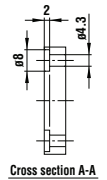
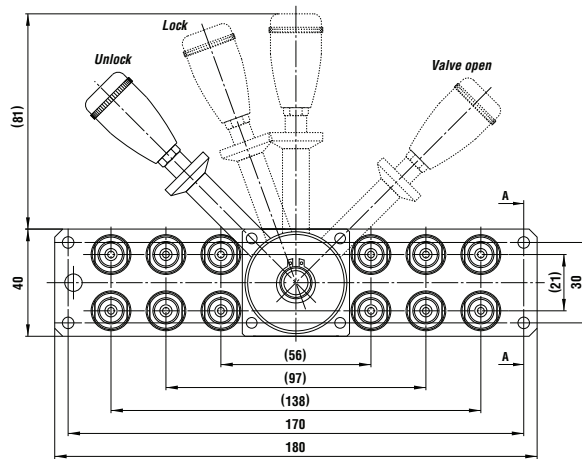
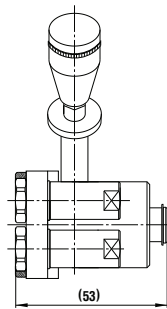
MAM-1TP-12

MAM-1TP-12 x MAM-1S-12  
(12 ports type)



Socket: Model

MAM-1S-12



Dimensions (mm)

Model MAM-1TP-16 x MAM-1S-16 (16 ports type)

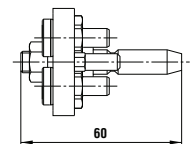
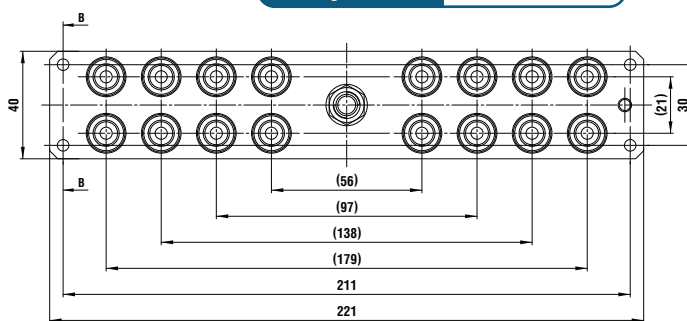
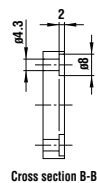
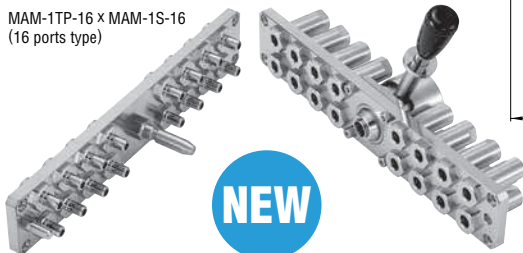
Application: R 1/8

Mass: 680 g (Plug), 1180 g (Socket)

Plug: Model

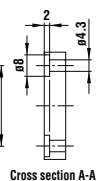
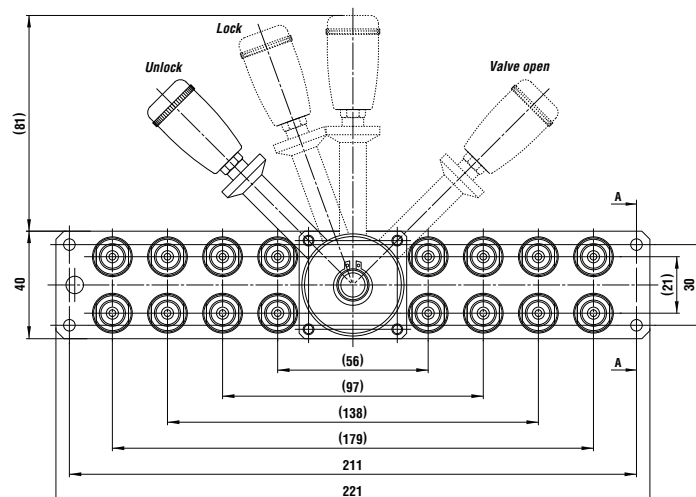
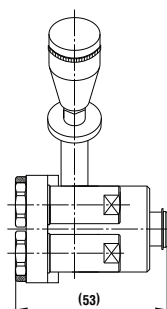
MAM-1TP-16

MAM-1TP-16 x MAM-1S-16  
(16 ports type)



Socket: Model

MAM-1S-16



Dimensions (mm)