

# INK-WELL

High Quality Inkjet Inks



Imprint Solution

## IMPRINT SOLUTION

507A, 6th Floor, Ecstasy , City of Joy, JSD Road  
Near East - West Flyover Mulund (W) Mumbai - 400080  
Ph No. 022-65800261 M: 9820636463  
Email: [nikunj@imprintsolution.co.in](mailto:nikunj@imprintsolution.co.in)

## Photo Inks and CISS

Imprint offers High Quality Inks for Photo application with following features -

- Vibrant Colors
- High dpi Printing - HD Quality
- Good Fade Resistance
- Long Printhead Life

### Range -

- Photo Inks for Epson
- Photo Inks for Canon
- Photo Inks for HP
- Photo Inks for Brother

Available in....

75 gms, 100gms, 200gm, 1 kg, 5 kg packing



## Large Format Printer Inks and Cartridges



Inks and Dyes Inks are available for complete range of Large Format Printers:

- Specially made for Plotters
- Suitable for Indoor Display
- High Fade Resistance
- Good Water Resistance
- Excellent Rub Resistance
- Good Color Matching

### Range -

- Inks for Epson Plotters
- Inks for Canon Plotters
- Inks for HP Plotters

Refillable Cartridge and Chip Resetters are also available for wide range of plotters.

## Pigment Inks for 125 Years Life

Introducing Pigment Inks with Guaranteed 125 years of Fade resistance under standard testing conditions as per OEM -

- Extreme Fade Resistance
- Vibrant Colors on RC paper
- Long Printhead Life
- Water-Proof on Plain Paper

### Range -

- Pigment Inks for Epson Printers
- Pigment Inks for Canon Printers
- Pigment Inks for HP Printers



## Sublimation Inks

High Quality Sublimation inks are available in 4 - color and 6- color for various desktop printers. Ideal for T-shirt printing and Gifting industry.

Features:

- Photo Quality Sublimation Inks
- Deep Black Printing
- No Head Blockages
- Suitable for all Sublimation Items
- Available for Epson, Brother and Ricoh Printers

Available in....

75 gms, 100gms, 200gm, 1 kg, 5 kg packing



## Sublimation Inks for Industrial Printers



Features:

- Excellent Runnability
- Long Printhead life
- High Color Strength
- Excellent Wash-Resistance
- High Fade Resistance

Available for All Epson printers, Mutoh, Mimaki, Roland, Dx4, Dx5, Dx6, Dx7, Panasonic, Ricoh, Konica KM-512i, KM-1024i Printers

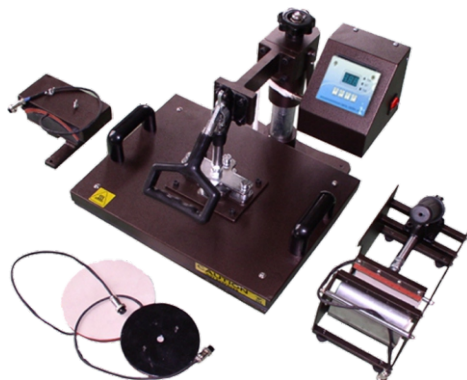
Available in :

500gms, 1 kg, 5 kg packing

## Heat-Press



**Mug Press**



**6-in-1 Heat Press**



**T-Shirt Transfer Machine**

Elide range of heat press machines available for various applications like Mug Printing, mobile cover, T-shirt, Key-chain, Plates, Caps, Wooden Frames, Ceramic Tiles, Water Bottles, Photo Frame, Collage, Wall clocks, etc

## Photo Paper

Range :

- RC Glossy
- RC Satin
- Cast Coated Glossy
- Inkjet Coated Matte
- Non Tearable Film

Features:

- High DPI - HD Quality
- Vibrant Colors
- Instant Dry Coating
- Smudge Resistant Coating
- Ideal for Long Life Professional Prints

Available in :

- A4, A3 Cut Sheets (100 sheet pkt)
- 17, 24, 36, 44 Inch rolls



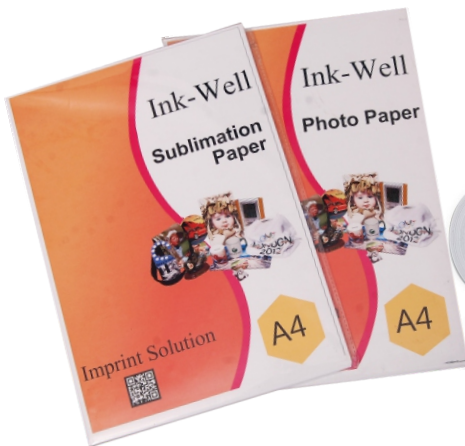
## Sublimation Paper

Features :

- Quick Dry Technology
- Special High Release Barrier Coat
- High Tack for Roll to Roll Transfers
- No Curling & Waving during printing
- Suitable for Hard & Soft substrates

Available in :

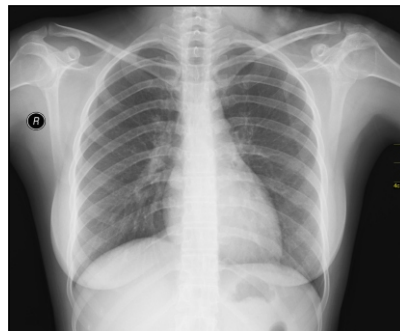
- A4, A3 Cut Sheets (100 sheet pkt)
- 17, 24, 30, 32, 36, 44, 63 Inch 100 meter rolls



## Speciality Inks for Various Application....



ID Card Printing



Medical Imaging



Backlit Photo Frames



# Imprint Solution

## IMPRINT SOLUTION

507A, 6th Floor, Ecstasy , City of Joy, JSD Road  
Near East - West Flyover Mulund (W) Mumbai - 400080  
Ph No. 022-65800261 Email: nikunj@imprintsolution.co.in