



KALPATECH ENGINEERS & INDUSTRIES LTD.

Manufacturers of Shaped Wires, Flat Wires, Wire Flattening & Shaping Mills, Continuous Casting Machines for Copper & Copper Based Alloys

Plot No. M-33, M.I.D.C. Area Ambad, Near NEC, Nashik, Maharashtra, 422010

WIRE PRODUCTS



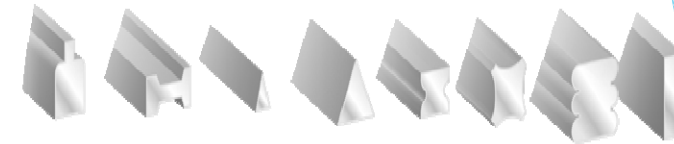
Flat Wires

With Natural Round Edges

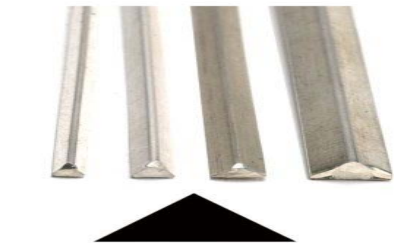


Flat Wires

With Square Edges



Half Round Wires



Triangular Wires



Shaped Wires

USE OF WIRE PRODUCTS



- Windshield Wiper
- Engine Oil Gauges
- Springs
- Reed
- Conveyor Belt
- Circlips
- Chain Bush



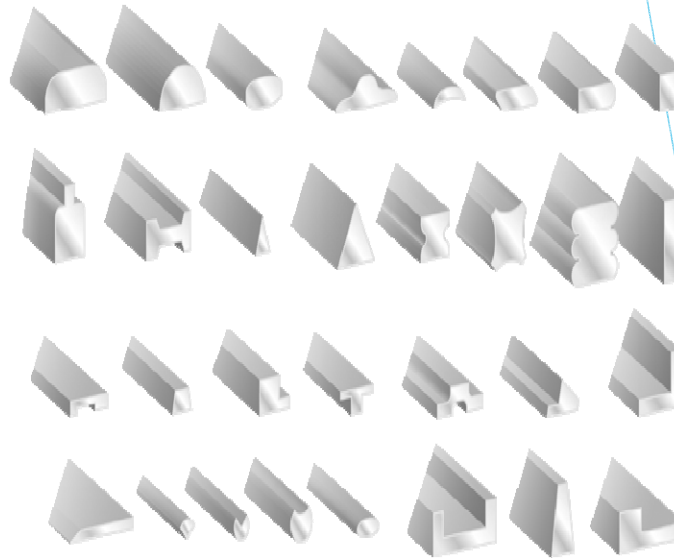
- Mesh
- Torsion Springs
- Conveyor Belt
- Jewellery



- Paper Industries
- Quarter Pins
- Screens

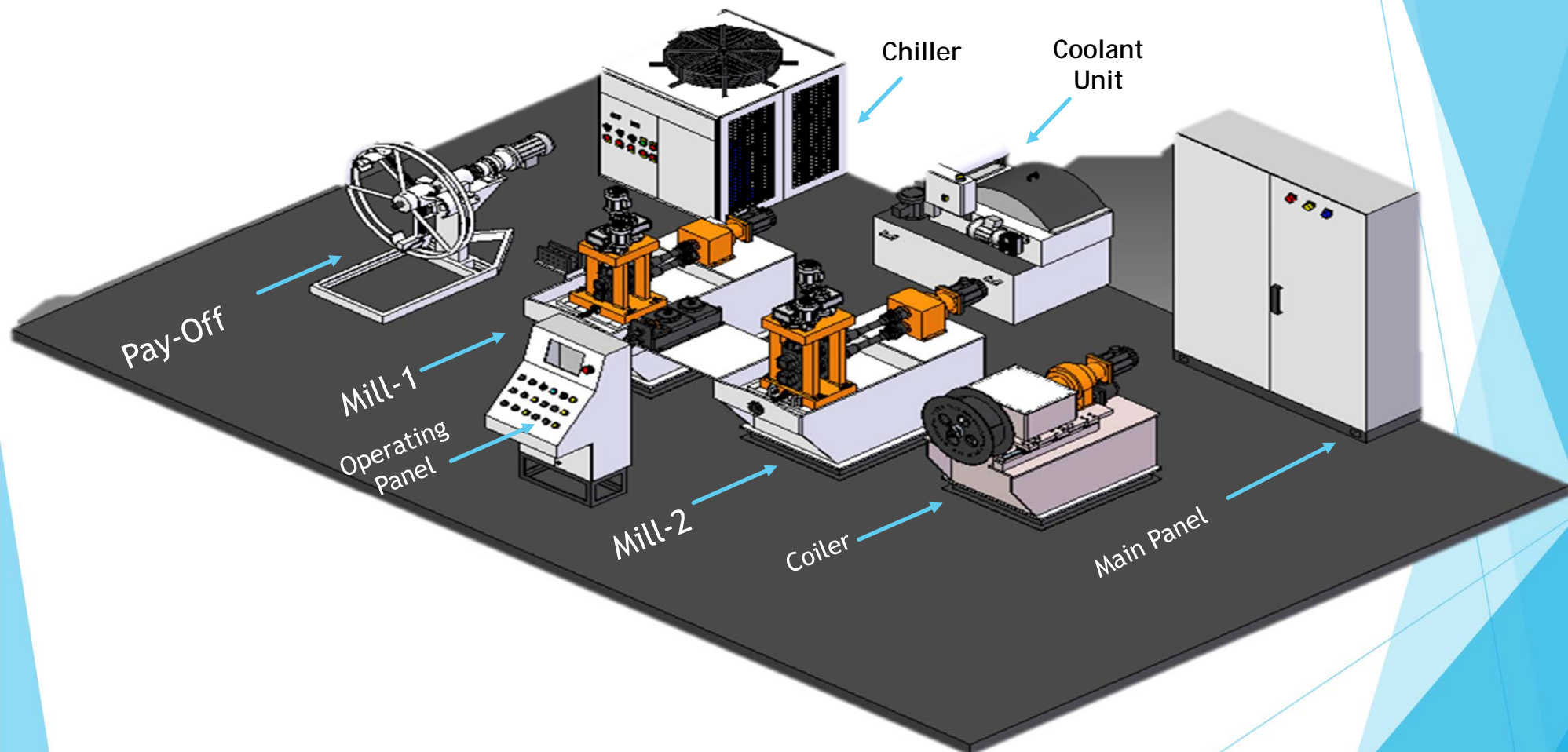


- Wire Mesh
- Pulp Screens



- All type of screens use for filtration of Pulp, Sludge etc.

WIRE FLATTENING PLANTS

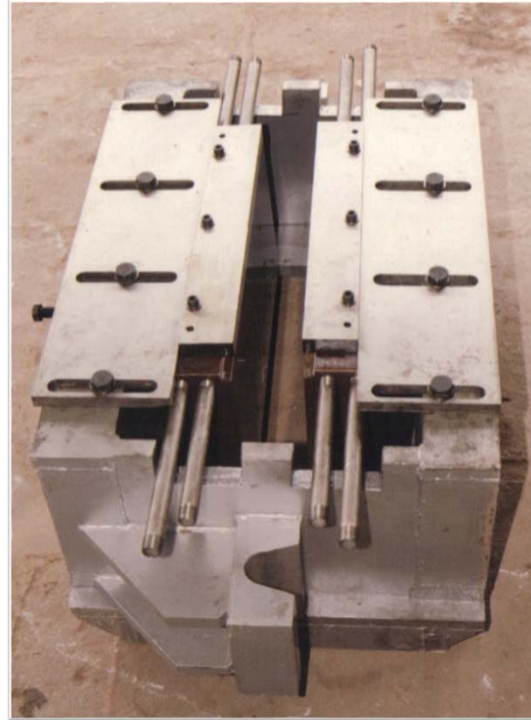


Used to Manufacture all types of Flat and Shaped wires from round wires with high precision and with Remarkable Production capacity.

COPPER CASTING MACHINES & ACCESSORIES



Continuous Casting
Machine
(Up Caster)



Die Cooler Assembly
(For Casting M/c)



Die Coolers
(For Casting M/c)

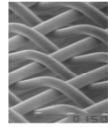
Used for casting Copper and copper based alloys in form of Billet, Slab etc. by using innovative technology to achieve high production capacity and productivity.

Targeted Area



Automotive Ind

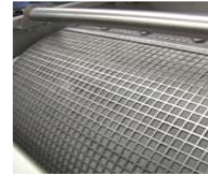
- Wiper
- Oil Gauge
- Circlips
- Quarter Pins



Conveyor Ind.



- Flat wire Conveyor Belts
- Square Wire Conveyor Belts



Filtration Screen Ind.

- Pulp Screens
- Sludge Screens
- Mud Screens

Quality Systems & Certification



Our Valuable Customer's



TIDC INDIA



Contact Details

Address :-

Plot No. -13, M.I.D.C. Area Ambad, Near Nashik Engineering Cluster,
Behind Baker's Craft, Nashik. Maharashtra Pin code:- 422010

Contact No. :- +91 253 2384138

:- 8380039815