

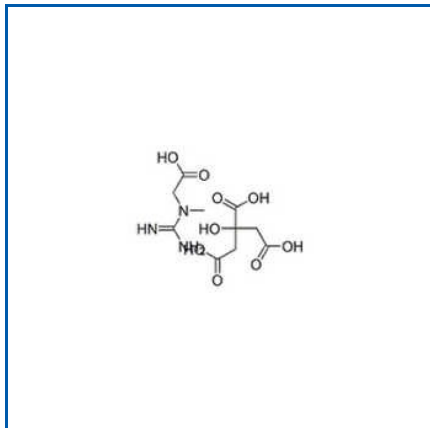


**NUTRACEUTICAL ANTIOXIDANTS**  
MAKING YOUR BELIEF STRONG IN US, AFTER EVERY DEAL

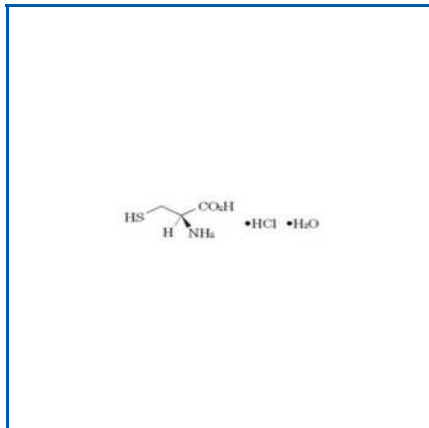
147-85-3 L-Proline, 149-32-6 Erythritol, 30237264 Fructose, 3081-61-6 L-Theanine, 35 And 70 Percent And Whey Protein Conc, 59-02-9 Vitamin E, 59-92-7 Levodopa, 60-27-5 Creatinine, 68424044 Polydextrose, 72-19-5 L-Threonine, 73-22-3 L-Tryptophan, 80 Percent Organic WPC, 80 Percent Whey Protein Conc, 87990 Xylitol, Acesulfame K, etc.



**HUEGLI ACID**



**CREATINE CITRATE**



**L CYSTEINE POWDER**



## About Us

Started the business venture in 2005, Devson Impex Private Limited has been supplying pharmaceutical, nutraceutical and food industry chemicals to domestic and international producers. Our company has been constantly growing in the Indian and international markets by providing accurately formulated L-Aspartic Acid, Nutraceutical Oleomega, Maple Syrup, Food Alginate, Potato Starch, Modified Whey Powder, Refined Corn Oil and more. With great domain experience and knowledge, we have become a renowned exporter, trader and supplier of industrial chemicals. Working with complete focus on quality, we source the industrial chemicals only from the reliable and reputed producers of the nation.

Devson Impex Private Limited is offering its high standard industrial chemicals to all across the world on a large scale. The company is situated in Mumbai, Maharashtra (India) from where we are carrying out all our daily business activities related to quality testing, storage, packaging, sales, marketing, etc. We are associated with a group of producers from whom we are obtaining industrial chemicals like Nutraceutical Triterpenoids, L-Glutamic Acid, Creatine Pyruvate, Carrageenan Gum, Maize Starch, Goat Milk Powder and so on. All these chemicals are formulated by the vendors using finest substances which enhance their shelf life and effectiveness. In air-tight and leak proof packaging materials, we are providing all the industrial chemicals in bulk to the customers.



**Key Facts**

<b>Nature of Business</b>	Importer
<b>Primary Competitive Advantages</b>	whey protein concentrate,maize starch,liquid glucose,l lysine,l cysteine,polydextrose,invert syrup,wheat starch,potato starch,rebaudioside a
<b>No of Staff</b>	25
<b>Year of Establishment</b>	2005
<b>OEM Service Provided</b>	No
<b>Memberships</b>	SEDEX Membership
<b>ProductRange</b>	whey protein concentrate,maize starch,liquid glucose,l lysine,l cysteine,polydextrose,invert syrup,wheat starch,potato starch,rebaudioside a

**Our Products**



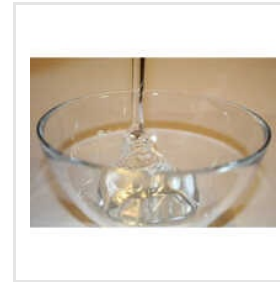
**Non Nutritive Polysaccharide Pectin**



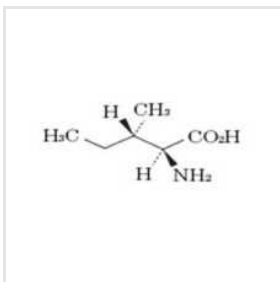
**Rice Malto Dextrin**



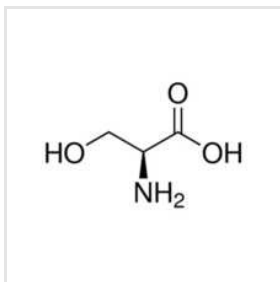
**Food Alginate**



**High Maltose Corn Syrup**



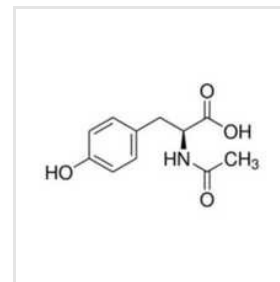
**L Isoleucine**



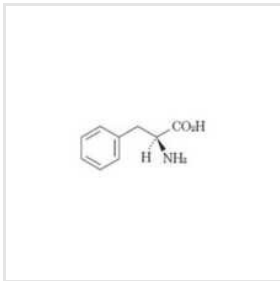
**L Serine**



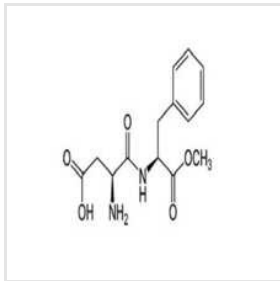
**L Arginine Mono HCL**



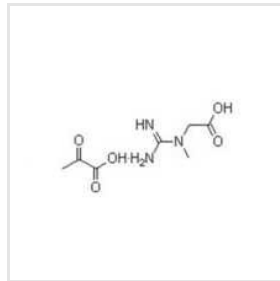
**N-Acetyl L-Tyrosine**



**L Phenylalanine Powder**



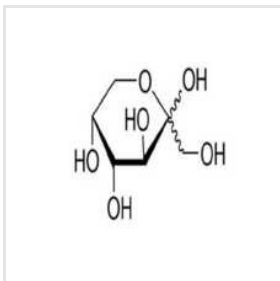
**Aspartame Powder**



**Creatine Pyruvate**



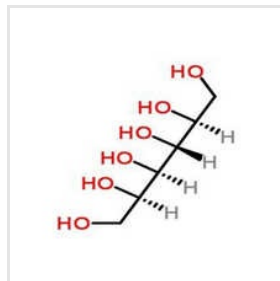
**149-32-6 Erythritol**



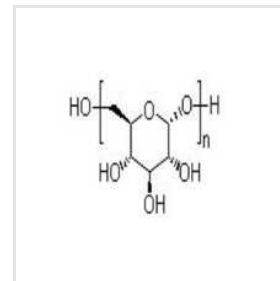
**30237264 Fructose**

**WHAT IS CARRAGEENAN?**  
Carrageenans are a mixture of polysaccharides extracted from edible red & purple seaweeds.

**Carrageenan Gum**



**Sorbitol Powder**



**68424044 Polydextrose**



ADDRESS



**Unit no 24, T.V. Industrial  
Estate, S.K. Ahire Marg, Worli  
Mumbai, Maharashtra, India  
(400030).**

EMAIL



**chetan@devson.in**

MOBILE



**+918879444965**

WEBSITE



**devson.tradeindia.com**

KEY PERSONNEL  
**Pramod Dangat**  
(SALES MANAGER PHARMA)