



**INDUSTRIAL CARBIDE TIP  
SAW BLADE**  
Fully Automatic Plant



**For cutting  
anything you want**

**BEST QUALITY | SHARP EDGE | EASY TO CUT | LONG LASTING**

**HIGH QUALITY PRECISION BLADES**

# ABOUT US

Warm greetings! We take this opportunity to introduce ourselves as one of the leading manufacturers of **TCT CIRCULAR SAW BLADES** in the country. Our company has over 18 years' experience in developing and designing saw blades, industrial knives, tools and cutters for various applications.

To ensure a professional quality in “**SHREEJIKRUPA**” products we use high quality raw materials, the state-of-the-art plant and machinery, advanced technical know-how, highly skilled technicians, experienced workmen, stringent quality management, inspection & production procedures confirming to ISO 9002 standards.

Our marketing executives offer free consultations in choosing the right kind of cutting tools for individual cutting applications. “**SHREEJIKRUPA**” also offers re-tipping, re-sharpening, repairing and prompt service after sales. “**SHREEJIKRUPA**” has over 700 satisfied clients including Government.

SHREEJIKRUPA PRODUCTS AND THEIR APPLICATIONS ARE AS FOLLOWS.

**1. TUNGSTEN CARBIDE TIPPED (TCT) CIRCULAR SAW BLADES** to cut Wood, Plywood, Veneers, Chip Boards, Particle boards, Fiber Boards, Composite Boards, Cement And Plaster Boards, Plaster Boards, Cement Boards, Calcium Silicate Boards, Industrial Laminates, Printed Circuit Boards, Glass Fiber, Plastic, Nylon, Pvc, Bakelite, Hylam, Acetate, Acrylic, Celluloid, Thermoplastic Boards, Plexiglass, Asbestos, Polyacrylates, Polystyrene, Rubberized Cork, Rockwool Etc. Also used for cutting Carcassing Timbers & Shutter Boards With Metal, Nails & Concrete Residues, Wood-wool Building Slabs, Gas Formed Concrete Bricks, Insulating Boards.

**2. TUNGSTEN CARBIDE TIPPED (TCT) CIRCULAR SAW BLADES** to cut non ferrous metals like Aluminum, Aluminum Alloy, Copper, Copper Alloy, Cupronickel, Brass, Bronze, Zinc, Magnesium, Lead etc.

**3. TUNGSTEN CARBIDE TIPPED COLD CIRCULAR SAW BLADES** to cut Ingots, Billets, Forgings, Bars, Structural Shapes, Heavy Extrusions like Rails, Sections and Rods.

**4. FRICTION CIRCULAR SAW BLADES** to cut Metal Pipes, Tubes, Angles, Profiles, Sections, Channels, etc. (Operating temperature up to 350° C ) and also for cutting PVC Pipes.

**5. CIRCULAR KNIVES** to cut Paper, Cloth, Synthetic Materials, Rayons, Cardboard, Cellophane, Strawboard, Tobacco, Plastic, Pvc, Nylon, Rubber, Leather, Jute, Cement Fiber, Calcium Silicate Etc.

Kindly let us have your valuable enquiries so that we can offer you the best competitive quotation.

For any further support including development of tools for newer applications please feel free to contact us and we shall be glad to assist you.

Awaiting your positive reply and looking forward to our long-term business relations.

**Thanks and regards,**

For SHREEJIKRUPA INDUSTRIES PVT. LTD.

**DINESH PATEL**

Managing Director

99242 46951  
99740 99598





## SAW BLADE (ATB) ECONOMIC



CODE	DIA	THICKNESS	BORE SIZE	TEETH
SGEW4-1	100	2.0mm	25.4mm	30
SGEW4-2	100	2.0mm	25.4mm	40
SGEW5-1	125	2.0mm	25.4mm	30
SGEW5-2	125	2.0mm	25.4mm	40
SGEW6-1	150	2.2mm	25.4mm	40
SGEW6-2	150	2.2mm	25.4mm	60
SGEW7-1	175	2.2mm	25.4mm	40
SGEW7-2	175	2.2mm	25.4mm	60
SGEW8-1	200	2.2mm	25.4mm	40
SGEW8-2	200	2.2mm	25.4mm	60
SGEW10-1	250	2.2mm	25.4mm	40
SGEW10-2	250	2.2mm	25.4mm	60
SGEW12-1	300	3.0mm	25.4mm	40
SGEW12-2	300	3.0mm	25.4mm	60



**Machine :** Hand Cutter, Circular Saw, Table Saw  
**Application :** Solid Wood & Plywood  
**Advantage :** Convenient, effective, safe etc.



## Saw Blade (ATB)

### SLIM



CODE	DIA	THICKNESS	BORE SIZE	TEETH
SGSW4-1	100	1.6mm	25.4mm	30
SGSW4-2	100	1.6mm	25.4mm	40
SGSW5-1	125	1.6mm	25.4mm	30
SGSW5-2	125	1.6mm	25.4mm	40
SGSW6-1	150	1.6mm	25.4mm	40
SGSW6-2	150	1.6mm	25.4mm	60
SGSW7-1	175	1.6mm	25.4mm	40
SGSW7-2	175	1.6mm	25.4mm	60
SGSW8-1	200	1.6mm	25.4mm	40
SGSW8-2	200	1.6mm	25.4mm	60
SGSW10-1	250	1.8mm	25.4mm	40
SGSW10-2	250	1.8mm	25.4mm	60
SGSW12-1	300	2.2mm	25.4mm	40
SGSW12-2	300	2.6mm	25.4mm	40
SGSW12-3	300	2.2mm	25.4mm	60
SGSW12-4	300	2.6mm	25.4mm	60



**Machine :** Hand Cutter, Circular Saw, Table Saw  
**Application :** Solid Wood & Plywood  
**Advantage :** Convenient, effective, safe etc.

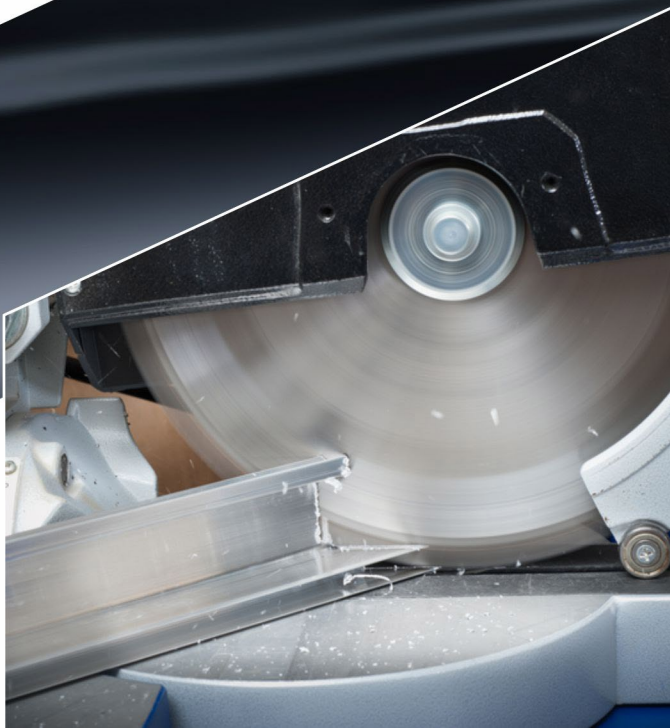
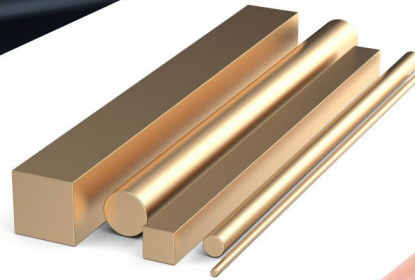
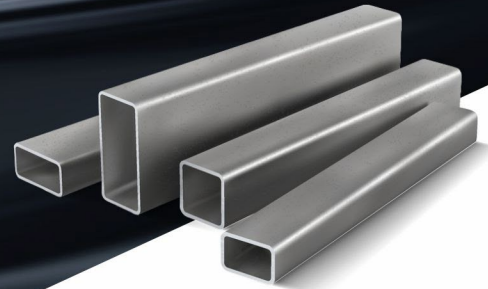


## SAW BLADE (TCG)

### ALUMINUM



CODE	DIA	THICKNESS	BORE SIZE	TEETH
SGALU5-1	125	2.2mm	25.4mm	60
SGALU7-1	175	2.4mm	25.4mm	80
SGALU8-1	200	2.6mm	25.4mm	80
SGALU8-2	200	2.6mm	25.4mm	100
SGALU10-1	250	2.8mm	25.4mm	100
SGALU10-2	250	2.8mm	25.4mm	120
SGALU12-1	300	3.0mm	25.4mm	100
SGALU12-2	300	3.0mm	25.4mm	120
SGALU14-1	350	3.5mm	25.4mm	100
SGALU14-2	350	3.5mm	25.4mm	120



**Machine :** Cutoff Machine, Miter Saw  
**Application :** Aluminum, Copper, Brass  
**Advantage :** Convenient, effective, safe etc.



## SAW BLADE (ATB)

SOLID WOOD, RIP SAW & DD SAW



CODE	DIA	THICKNESS	BORE SIZE	TEETH
SGRD10-1	250	3.2mm	63.5mm	48
SGRD12-1	300	3.2mm	63.5mm	48
SGRD12-2	300	3.2mm	25.4mm	56
SGRD12-3	300	3.2mm	25.4mm	72
SGRD12-4	300	3.2mm	25.4mm	96
SGRD12-5	300	5.0mm	25.4mm	48
SGRD12-6	300	6.0mm	25.4mm	48
SGRD13-1	330	3.5mm	63.5mm	48
SGRD13-2	330	3.5mm	25.4mm	56
SGRD13-3	330	3.5mm	63.5mm	56
SGRD13-4	330	5.0mm	25.4mm	56
SGRD13-5	330	6.0mm	25.4mm	56
SGRD14-1	350	3.5mm	25.4mm	36
SGRD14-2	350	3.5mm	25.4mm	56
SGRD14-3	350	3.5mm	63.5mm	56
SGRD14-4	350	3.5mm	25.4mm	60
SGRD14-5	350	3.5mm	25.4mm	72
SGRD14-6	350	3.5mm	25.4mm	84
SGRD14-7	350	3.5mm	25.4mm	96
SGRD14-8	350	3.5mm	25.4mm	108
SGRD16-1	400	3.5mm	25.4mm	60
SGRD16-2	400	3.5mm	25.4mm	96
SGRD16-3	400	3.5mm	25.4mm	108
SGRD16-4	400	3.5mm	25.4mm	120
SGRD16-5	400	3.5mm	25.4mm	132
SGRD18-1	450	3.6mm	25.4mm	54
SGRD18-2	450	3.6mm	25.4mm	72
SGRD18-3	450	3.6mm	25.4mm	108
SGRD18-4	450	3.6mm	25.4mm	120



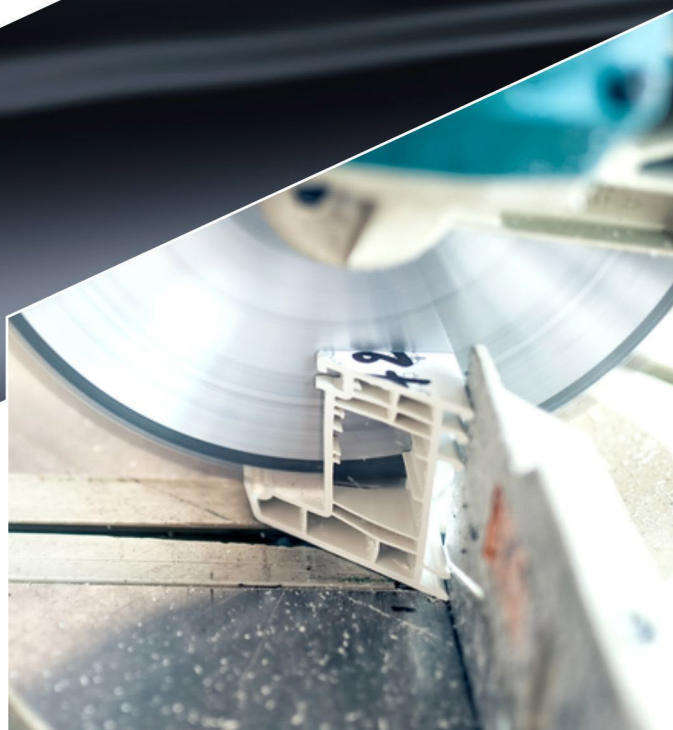
Machine : Rip Saw & DD Saw machine  
 Application : Solid Wood  
 Advantage : Convenient, effective, safe etc.



## Saw Blade (ATB) PVC PIPE & SECTION CUTTING



CODE	DIA	THICKNESS	BORE SIZE	TEETH
SGPVC7-1	180	3.0mm	25.4mm	56
SGPVC8-1	200	3.2mm	25.4mm	60
SGPVC12-1	300	4.0mm	25.4mm	96
SGPVC14-1	350	3.0mm	25.4mm	120
SGPVC14-2	350	4.0mm	25.4mm	108
SGPVC18-1	450	3.0mm	25.4mm	150
SGPVC20-1	500	3.0mm	25.4mm	160
SGPVC21-1	520	4.0mm	25.4mm	160
SGPVC22-1	550	4.0mm	25.4mm	160
SGPVC22-2	560	4.0mm	25.4mm	170
SGPVC25-1	630	4.0mm	25.4mm	192
SGPVC26-1	650	4.0mm	25.4mm	210
SGPVC33-1	840	5.0mm	25.4mm	240
SGPVC34-2	850	5.0mm	25.4mm	208



Machine : Panel Saw, Circular Saw, Table Saw  
Application : PVC Pipe & Section Cutting  
Advantage : Convenient, effective, safe etc.



## SAW BLADE (ATB)

### SOLID WOOD & PLYWOOD CUTTING



CODE	DIA	THICKNESS	BORE SIZE	TEETH
SGSPW4-1	100	1.8mm	20mm	30
SGSPW4-2	100	1.8mm	20mm	40
SGSPW5-1	125	1.8mm	20mm	30
SGSPW5-2	125	1.8mm	20mm	40
SGSPW6-1	150	1.8mm	25.4mm	40
SGSPW6-2	150	2.2mm	25.4mm	40
SGSPW6-3	150	1.8mm	25.4mm	60
SGSPW6-4	150	2.2mm	25.4mm	60
SGSPW7-1	175	1.5mm	25.4mm	40
SGSPW7-2	175	1.7mm	25.4mm	40
SGSPW7-3	175	2.2mm	25.4mm	40
SGSPW7-4	175	2.5mm	25.4mm	40
SGSPW7-5	175	1.7mm	25.4mm	48
SGSPW7-6	175	2.2mm	25.4mm	48
SGSPW7-7	175	2.5mm	25.4mm	48
SGSPW7-8	175	1.7mm	25.4mm	60
SGSPW7-9	175	2.2mm	25.4mm	60
SGSPW8-1	200	1.5mm	25.4mm	40
SGSPW8-2	200	1.7mm	25.4mm	40
SGSPW8-3	200	2.2mm	25.4mm	40
SGSPW8-4	200	2.5mm	25.4mm	40
SGSPW8-5	200	3.2mm	25.4mm	40
SGSPW8-6	200	1.5mm	25.4mm	48
SGSPW8-7	200	1.7mm	25.4mm	48
SGSPW8-8	200	2.2mm	25.4mm	48
SGSPW8-9	200	2.5mm	25.4mm	48
SGSPW8-10	200	3.2mm	25.4mm	48
SGSPW8-11	200	1.7mm	25.4mm	60
SGSPW8-12	200	2.2mm	25.4mm	60
SGSPW8-13	200	2.5mm	25.4mm	60
SGSPW8-14	200	3.2mm	25.4mm	60
SGSPW8-15	200	3.2mm	25.4mm	32
SGSPW8-16	200	3.2mm	25.4mm	36





## SAW BLADE (ATB)

### SOLID WOOD & PLYWOOD CUTTING



CODE	DIA	THICKNESS	BORE SIZE	TEETH
SGSPW9-1	225	1.7mm	25.4mm	40
SGSPW9-2	225	2.5mm	25.4mm	40
SGSPW9-3	225	3.2mm	25.4mm	40
SGSPW10-1	250	1.8mm	25.4mm	40
SGSPW10-2	250	2.2mm	25.4mm	40
SGSPW10-3	250	2.5mm	25.4mm	40
SGSPW10-4	250	2.8mm	25.4mm	40
SGSPW10-5	250	3.2mm	25.4mm	40
SGSPW10-6	250	1.7mm	25.4mm	48
SGSPW10-7	250	2.2mm	25.4mm	48
SGSPW10-8	250	2.5mm	25.4mm	48
SGSPW10-9	250	2.8mm	25.4mm	48
SGSPW10-10	250	3.2mm	25.4mm	48
SGSPW10-11	250	1.8mm	25.4mm	60
SGSPW10-12	250	2.2mm	25.4mm	60
SGSPW10-13	250	2.5mm	25.4mm	60
SGSPW10-14	250	2.8mm	25.4mm	60
SGSPW10-15	250	3.2mm	25.4mm	60
SGSPW10-16	250	3.2mm	25.4mm	32
SGSPW10-17	250	3.2mm	25.4mm	36
SGSPW10-18	250	3.2mm	25.4mm	80
SGSPW11-1	275	2.5mm	25.4mm	48
SGSPW11-2	275	3.2mm	25.4mm	48
SGSPW12-1	300	2.2mm	25.4mm	40
SGSPW12-2	300	2.5mm	25.4mm	40
SGSPW12-3	300	2.8mm	25.4mm	40
SGSPW12-4	300	3.2mm	25.4mm	40
SGSPW12-5	300	2.5mm	25.4mm	48
SGSPW12-6	300	2.8mm	25.4mm	48
SGSPW12-7	300	3.2mm	25.4mm	48
SGSPW12-8	300	3.2mm	25.4mm	28
SGSPW12-9	300	3.2mm	25.4mm	32
SGSPW12-10	300	3.2mm	25.4mm	36
SGSPW12-11	300	2.5mm	25.4mm	60
SGSPW12-12	300	2.8mm	25.4mm	60
SGSPW12-13	300	3.2mm	25.4mm	60

**Machine :** Circular Saw, Rip Saw, Table Saw & Cm4 Machine  
**Application :** Solid Wood, Plywood, MDF & ACP  
**Advantage :** Convenient, effective, safe etc.



## Saw Blade (TCG)

### ALUMINUM SECTION (CUT OF MACHINE)



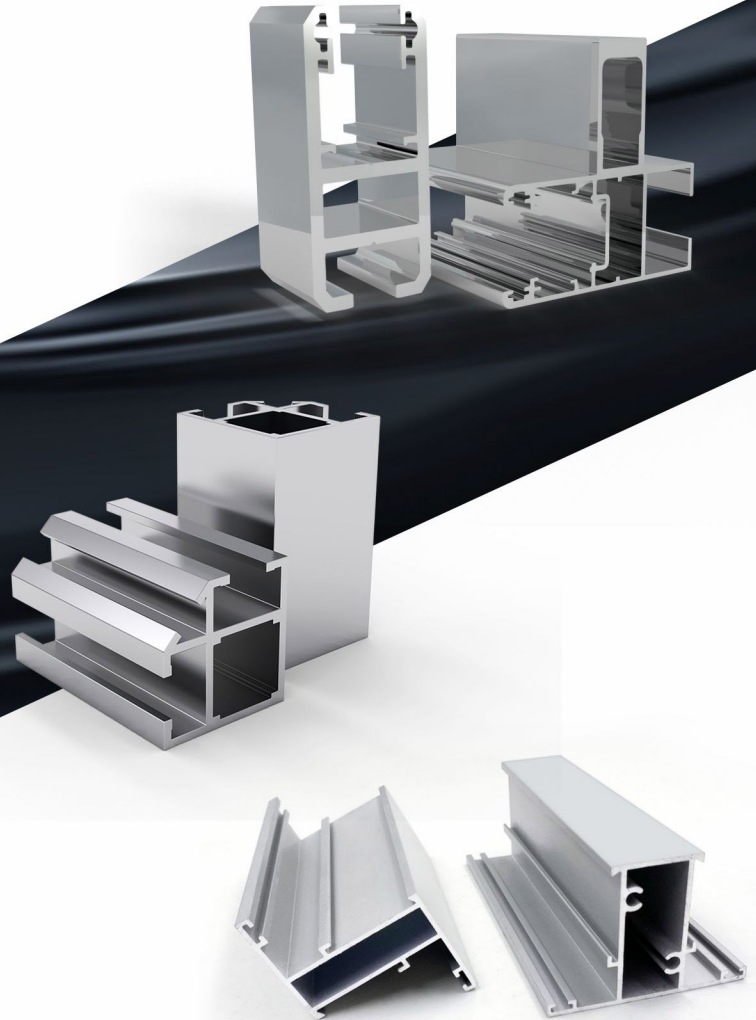
CODE	DIA	THICKNESS	BORE SIZE	TEETH
SGAS4-1	100	2.0mm	20.0mm	40
SGAS5-1	125	2.0mm	20.0mm	40
SGAS6-1	150	2.0mm	25.4mm	60
SGAS7-1	175	2.2mm	25.4mm	60
SGAS8-1	200	2.2mm	25.4mm	40
SGAS8-2	200	2.5mm	25.4mm	60
SGAS10-1	250	2.8mm	25.4mm	96
SGAS10-2	250	3.0mm	25.4mm	80
SGAS10-3	250	3.0mm	25.4mm	100
SGAS10-4	250	3.0mm	25.4mm	120
SGAS12-1	300	3.0mm	25.4mm	100
SGAS12-2	300	3.0mm	25.4mm	120
SGAS14-1	350	3.0mm	25.4mm	100
SGAS14-2	350	3.0mm	25.4mm	120
SGAS14-3	350	3.5mm	25.4mm	72
SGAS14-4	350	3.5mm	25.4mm	80
SGAS14-5	350	3.5mm	25.4mm	96
SGAS14-6	350	4.0mm	25.4mm	72
SGAS16-1	400	3.5mm	25.4mm	120
SGAS16-2	400	4.0mm	25.4mm	120
SGAS18-1	450	3.5mm	25.4mm	120
SGAS18-2	450	4.0mm	25.4mm	72
SGAS18-3	450	4.0mm	25.4mm	120
SGAS20-1	500	4.0mm	25.4mm	140
SGAS20-2	500	4.0mm	25.4mm	120
SGAS20-3	500	5.0mm	25.4mm	120
SGAS22-1	550	4.0mm	25.4mm	120
SGAS22-2	550	4.0mm	25.4mm	72
SGAS24-1	600	4.0mm	25.4mm	72
SGAS24-2	600	4.0mm	25.4mm	120
SGAS24-3	600	5.0mm	25.4mm	72
SGAS24-4	600	5.0mm	25.4mm	120
SGAS24-5	600	5.0mm	25.4mm	144





## Saw Blade (TCG) ALUMINUM SECTION (CUT OF MACHINE)

CODE	DIA	THICKNESS	BORE SIZE	TEETH
SGAS24-6	600	6.0mm	25.4mm	144
SGAS28-1	700	5.0mm	25.4mm	72
SGAS28-2	700	5.0mm	25.4mm	120
SGAS28-3	700	5.0mm	25.4mm	144
SGAS28-4	700	5.0mm	25.4mm	96
SGAS32-1	800	6.0mm	25.4mm	72
SGAS32-2	800	6.0mm	25.4mm	96
SGAS32-3	800	6.0mm	25.4mm	144



**Machine :** Cut Off Machine, Miter Saw  
**Application :** Aluminum, Copper & Brass  
**Advantage :** Convenient, effective, safe etc.



## SAW BLADE (ATB)

### RIP SAW BLADE (RAKERS)

CODE	DIA	THICKNESS	BORE SIZE	TEETH	RACKER
SGR10-1	250	3.2mm	25.4mm	20	2+2
SGR12-1	300	3.2mm	25.4mm	24	2+2
SGR14-1	350	3.5mm	25.4mm	24	2+4
SGR14-2	350	3.5mm	25.4mm	32	2+4
SGR16-1	400	3.8mm	25.4mm	32	2+4
SGR18-1	450	4.0mm	25.4mm	36	2+4



**Machine :** Multiple Ripsaw machines  
**Application :** Solid Wood  
**Advantage :** Convenient, effective, safe etc.



## SAW BLADE (TCG) ALUMINUM ROUND BAR CUTTING

CODE	DIA	THICKNESS	BORE SIZE	TEETH
SGAR10-1	250	3.8mm	25.4mm	40
SGAR10-2	250	3.8mm	25.4mm	48
SGAR12-1	300	3.8mm	25.4mm	48
SGAR12-2	300	3.8mm	25.4mm	60
SGAR14-1	350	3.8mm	25.4mm	60



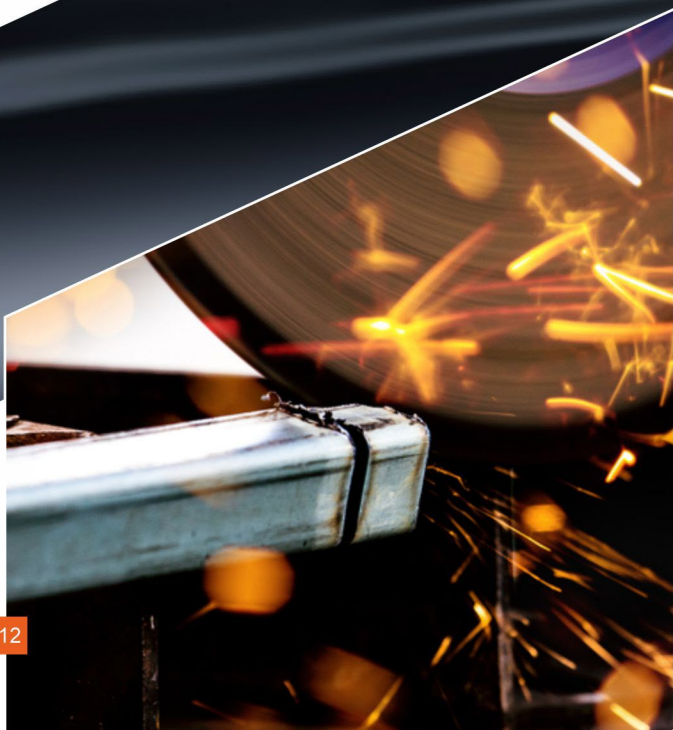
**Machine :** Cutoff Machine, Miter Saw  
**Application :** Aluminum, Copper, Brass, Bar  
**Advantage :** Convenient, effective, safe etc.



**SAW BLADE (TCG)**  
**EXTRUSION PLANT**  
**ALUMINUM/COPPER**  
**/PLASTIC FINISH CUTTING**



CODE	DIA	THICKNESS	BORE SIZE	TEETH
SGE16-1	400	3.5mm	25.4mm	96
SGE16-2	400	3.5mm	25.4mm	120
SGE16-3	400	3.8mm	25.4mm	120
SGE18-1	450	3.8mm	25.4mm	108
SGE18-2	450	3.8mm	25.4mm	120
SGE20-1	500	4.0mm	25.4mm	120
SGE22-1	555	4.0mm	25.4mm	120
SGE22-2	555	4.0mm	25.4mm	160
SGE24-1	600	4.0mm	25.4mm	120
SGE24-2	600	4.0mm	25.4mm	144
SGE26-1	650	4.0mm	25.4mm	120
SGE26-2	650	4.0mm	25.4mm	144
SGE26-3	650	4.0mm	25.4mm	160
SGE26-4	650	4.0mm	25.4mm	180
SGE26-5	650	5.0mm	25.4mm	120
SGE26-6	650	5.0mm	25.4mm	144
SGE26-7	650	5.0mm	25.4mm	160
SGE26-8	650	5.0mm	25.4mm	180
SGE27-1	680	5.0mm	25.4mm	160
SGE28-1	700	5.0mm	25.4mm	160



**Machine :** Extrusion Plan  
**Application :** Aluminum, Copper, Brass , Plastic Profile Cutting  
**Advantage :** Convenient, effective, safe etc.  
**Note :** accept customize size

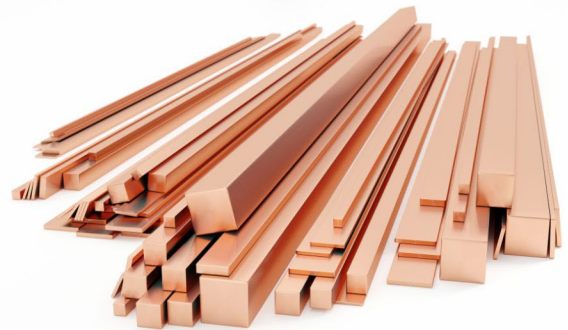
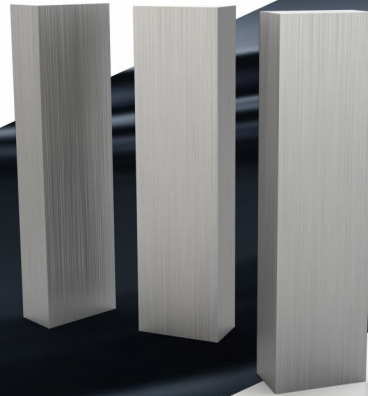


## SAW BLADE (TCG)

**BILLET CUTTING/ALUMINUM  
/COPPER**



CODE	DIA	THICKNESS	BORE SIZE	TEETH
SGB16-1	400	4.0mm	25.4mm	60
SGB18-1	450	4.0mm	25.4mm	54
SGB18-2	450	4.0mm	25.4mm	72
SGB20-1	500	4.0mm	25.4mm	60
SGB20-2	500	4.0mm	25.4mm	72
SGB22-1	555	4.0mm	25.4mm	72
SGB24-1	600	4.0mm	25.4mm	72
SGB26-1	650	4.0mm	25.4mm	72
SGB26-2	650	5.0mm	25.4mm	72
SGB28-1	700	4.0mm	25.4mm	72
SGB28-2	700	5.0mm	25.4mm	72
SGB28-3	700	5.0mm	25.4mm	90
SGB30-1	750	5.0mm	25.4mm	96



**Machine :** Extrusion Plant  
**Application :** Billet Cutting  
**Advantage :** Convenient, effective, safe etc.  
**Note :** Accept Customized size



## PANEL SAW BLADE (TCG) LAMINATE & PRE LAMINATE BOARD CUTTING

CODE	DIA	THICKNESS	BORE SIZE	TEETH
SGP8-1	200	5.0 TO 10 mm	30mm	24+24
SGP12-1	300	3.2mm	30mm	72
SGP12-2	300	3.2mm	30mm	96
SGP14-1	350	3.5mm	30mm	72
SGP14-2	350	3.5mm	30mm	108



**Machine :** Panel Saw, Laminate Sizing Saw  
**Application :** Prelaminate Board, Laminated Sheets & MDF Board  
**Advantage :** Convenient, effective, safe etc.  
**Note :** accept customize size





**SAW BLADE**  
**FINGER JOINT CUTTER**

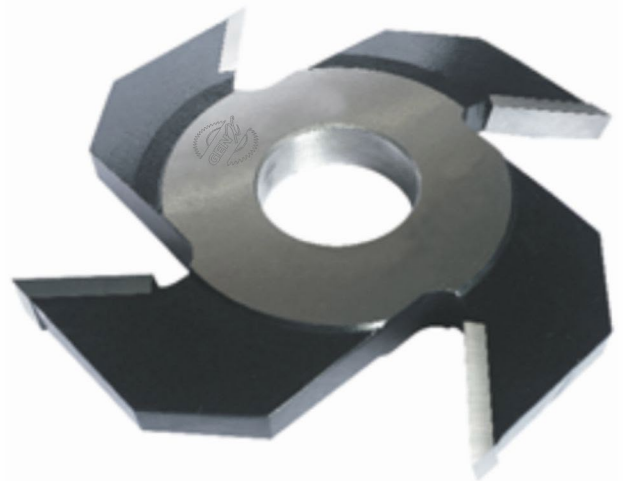
CODE	DIA	THICKNESS	BORE SIZE	TEETH	CUTTING LENGTH
SGFJ5-1	125	5.0mm	31.75mm	4T	15
SGFJ5-2	125	7.0mm	31.75mm	4T	22
SGFJ5-3	125	10 mm	31.75mm	4T	25



Machine : Finger Joint Machine  
Application : Solid Wood  
Advantage : Convenient, effective, safe etc.

CODE	DIA	THICKNESS	BORE SIZE	TEETH	CUTTING LENGTH
SGPFJ5-1	125	4.0mm	31.75mm	4T	11
SGPFJ5-1	125	5.0mm	31.75mm	4T	13
SGPFJ5-1	125	7.0mm	31.75mm	4T	22
SGPFJ6-1	160	4.0mm	31.75mm	2T	13

**SAW BLADE**  
**PREMIUM FINGER JOINT CUTTER**



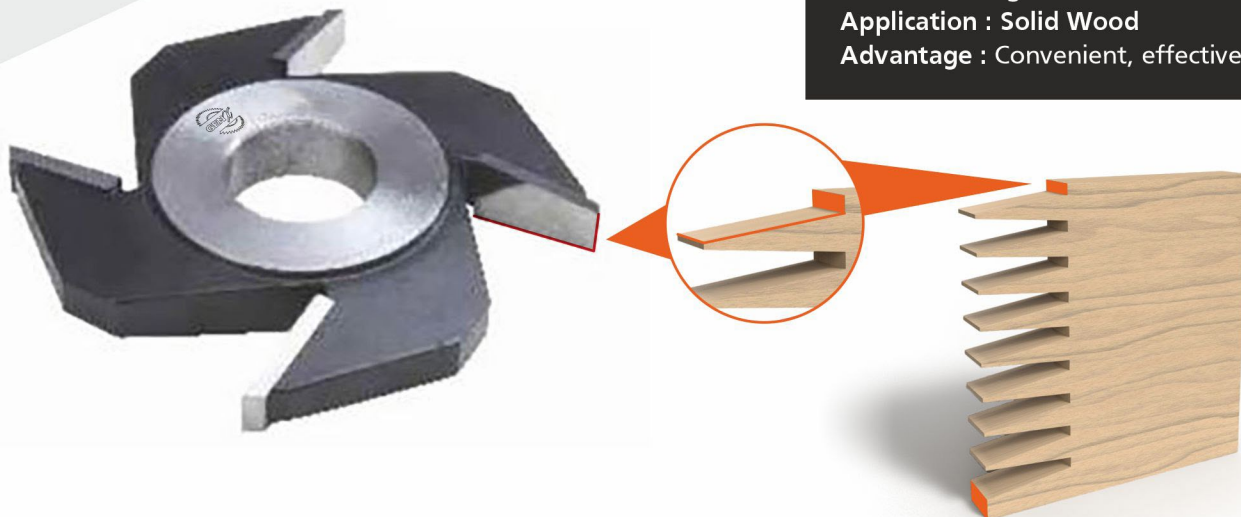
Machine : Finger Joint Machine  
Application : Solid Wood  
Advantage : Convenient, effective, safe etc.



## SAW BLADE SOLDER CUTTER

CODE	DIA	THICKNESS	BORE SIZE	TEETH	USE WITH
SGSLD5-1	125	10.0mm	31.75mm	4T	SGFJ5-1(5.0mm)
SGSLD5-2	125	12.0mm	31.75mm	4T	SGFJ5-2(7.0mm)
SGSLD5-3	125	14.0mm	31.75mm	4T	SGFJ5-3(10mm)
SGSLD6-1	160	10.0mm	31.75mm	2T	SGFJ5-4(4.0mm)

Machine : Finger Joint Machine  
 Application : Solid Wood  
 Advantage : Convenient, effective, safe etc.



CODE	DIA	THICKNESS	BORE SIZE	TEETH	CUTTING LENGTH
SGPSLD5-1	125	4.0mm	31.75mm	4T	11
SGPSLD5-2	125	5.0mm	31.75mm	4T	13
SGPSLD5-3	125	7.0mm	31.75mm	4T	22
SGPSLD6-1	160	4.0mm	50.0 mm	2T	13

## SAW BLADE PREMIUM SOLDER CUTTER



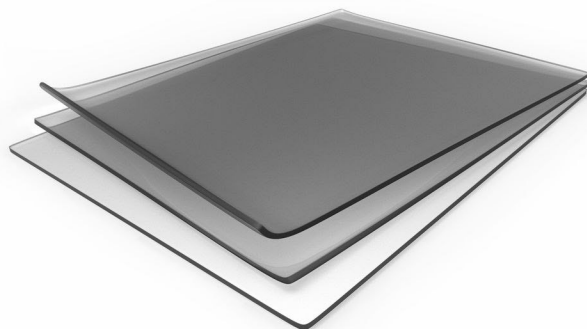
Machine : Finger Joint Machine  
 Application : Solid Wood  
 Advantage : Convenient, effective, safe etc.





## SAW BLADE DIAMOND CIRCULAR

CODE	DIA	THICKNESS	BORE SIZE
SGDP8	200	3.0mm	25.4mm
SGDP11	280	3.0mm	25.4mm
SGDP14	350	3.0mm	25.4mm
SGDP22	550	3.5mm	25.4mm
SGDP22	560	3.0mm	25.4mm
SGDP23	570	3.5mm	25.4mm
SGDP24	600	3.5mm	25.4mm
SGDP25	630	3.5mm	25.4mm



**Machine** : Cutoff Saw, Floor Saw,  
Table Saw Machine  
**Application** : Cutting Tile, Marble, Stone,  
Granite & Masonry  
**Advantage** : Convenient, effective, safe etc.



**Manufactured by:**

  
**SHREEJI KRUPA**®  
INDUSTRIES PVT. LTD.  
REG. No. : 2985163

CIN-U28994GJ2013PTC074095  
Plot No. 308, Road 4A, G.I.D.C., Kathwada,  
Ahmedabad-382430. (GUJARAT) INDIA.

 [www.genxsaw.com](http://www.genxsaw.com)  
 [genxsaw@gmail.com](mailto:genxsaw@gmail.com)  
 +91-99740 99598, 99242 46951

