

User Manual

Digital Inspection System



Model: C600

Features:

- View live inspection video instantly on the 3.5 in.(88.9mm) QVGA color LCD screen
- Up to 3 Mega Pixels resolution for image capture, 720P high definition for recording videos
- 4x zoom and 360° image flip monitor
- 5.5mm diameter camera with high sensitivity for low-light VGA camera chip in the tip
- Wired Color Monitor can be detached from the unit for remote viewing . Can be operated up to 1.5m away with a cable.
- 1W Cree flash assisting dark area work
- Adjustable handle and screen



Product Overview

Applications

Safety & Care

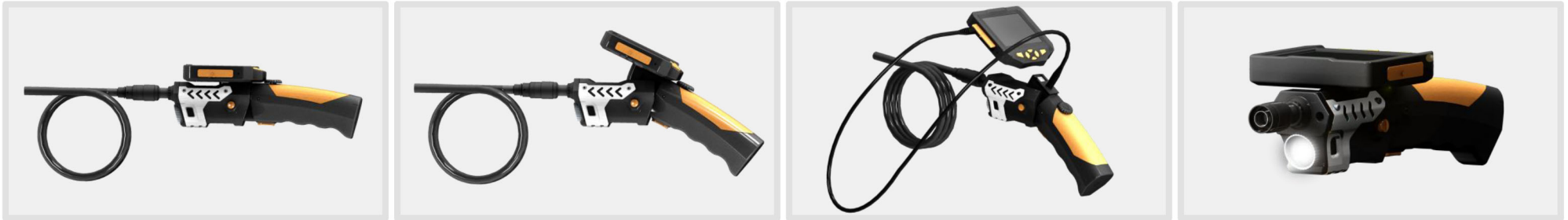
Instructions for use

Specifications

Product Overview:

This new Digital Video Recording Endoscope is a portable, hand-held, multifunctional inspection system featuring a 3.5" full color LCD screen with powerful recording capability. Users can capture images (JPG) or videos (AVI) on the TF card with up to 3 megapixels resolution for the images, 720P high definition for the videos (Through High Quality Linear Interpolation). The Wired Color Monitor can be detached from the unit for remote viewing and operating up to 1.5m away using a cable. With ergonomic and robust design, users can control all the keys with one hand easily, and the adjustable handle offers extra comfort.. In addition, the stainless steel shield and overall reinforced structures ensures stability under heavy duty.

The device has a slim 5.5mm diameter probe with 4 adjustable LED lights, high performance camera module offering crystal clear output. Furthermore, it has an integrated 1W CREE flash light for dark area working assistance.



Applications:

This premier tool is an economical solution for:

- Automotive / Diesel Repair and Maintenance
- Inspection of hard-to-reach or hard-to-see area or equipment
- Plumbing, construction, restoration applications
- Science Education
- Outdoor Exploration





WARNING! Please read all safety warnings and all instructions before using this product. Failure to follow the warnings and instructions may result in electric shock, fire and serious injury.

Safety:

- Keep the tool dry, clean, free from oil, water, gas or other materials causing corrosion.
- Keep work area clean and well lit.
- This appliance is not intended for use by persons with limited physical, sensory or mental capabilities.
- This appliance is not intended for medical use or personal inspection.
- Keep bystanders, children away while operating the tool.
- Do not overreach, keep proper footing and balance at all times.

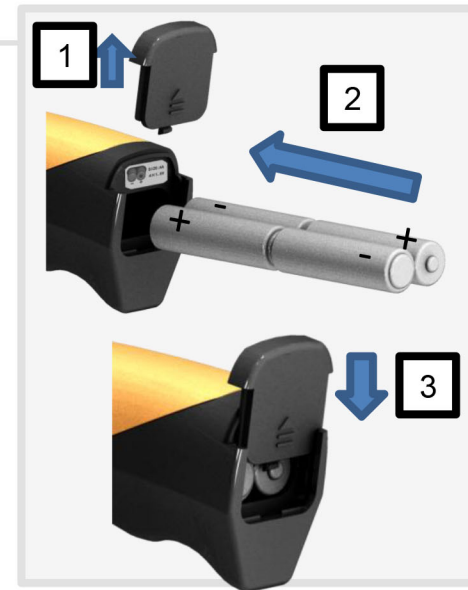
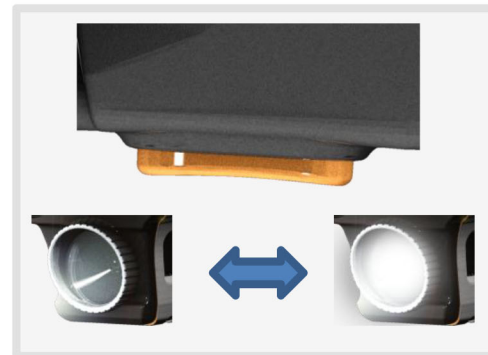
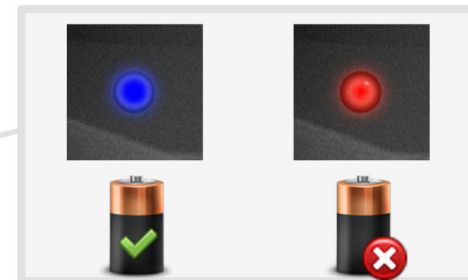
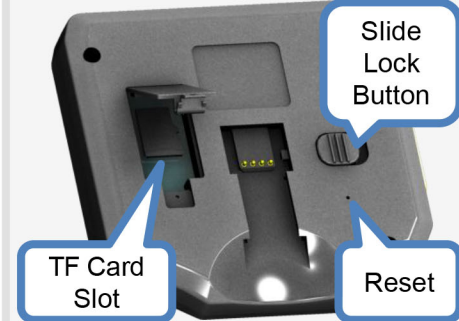
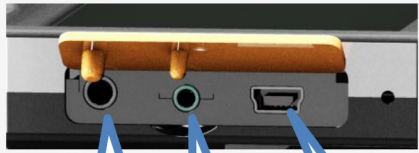
Batteries:

- Use only Alkaline or Ni-MH AA batteries.
- Replace batteries when the LED indicator turns red.
- Remove the batteries when the product is not in use.

Maintenance:

- Always keep the camera lens clean.
- Should any other components not mentioned need to be replaced, please contact our service agents.

Instructions for use



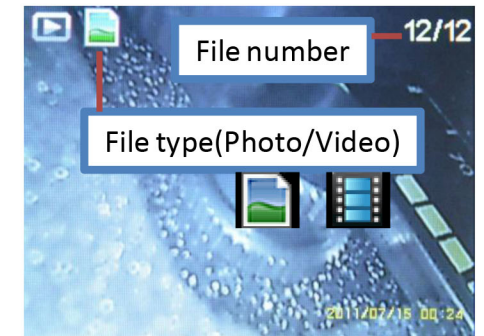


Insert card : Power off the device, open the cover on the backside of the monitor and insert the TF card according to this chart.

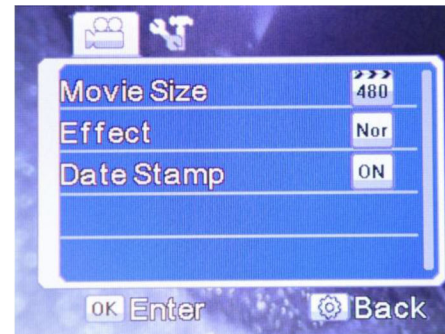
- ⚠ Please make sure the device is powered off before operating the TF card.
- ⚠ Please operate gently.



Click in Photo/Video mode to snap photos or record movie clips.




Click **"MODE"** button to switch the mode
Photo Video Playback



Click to enter Photo settings in Photo Mode or Video settings in Video Mode, click **"MODE"** button to enter General Settings
Click **"UP"** **"DOWN"** button to select and **"OK"** button to save changes.

Menu Tree

Click  to enter the menu to change settings. Default setting: ●

Photo



Resolution

3M(2048×1536)

2M(1600×1200)

● VGA(640×480)

Effect

● Normal

Black&White

Date Stamp

● On

Off

Video



MovieSize

1280×720

● 640×480

320×240

Effect

● Normal

Black&White

Date Stamp

● On

Off

Playback



Lock

One/All

Unlock

Delete

Single File

All File

Thumbnail

Display 4

Display 9

General Settings



Click  and then **MODE** button to enter General Settings.

Time&Date

YY/MM/DD

Hour/Minute

Display Style

Languages

● English

Germany

Chinese

Spanish

Franch

Russian

Japanese

TV OUT

NTSC

● PAL

Sound

Shutter

Power on

Power Frequency

● 50hz

60hz

Power Save

3 minutes

5 minutes

10 minutes

● Off

Format Card

Yes

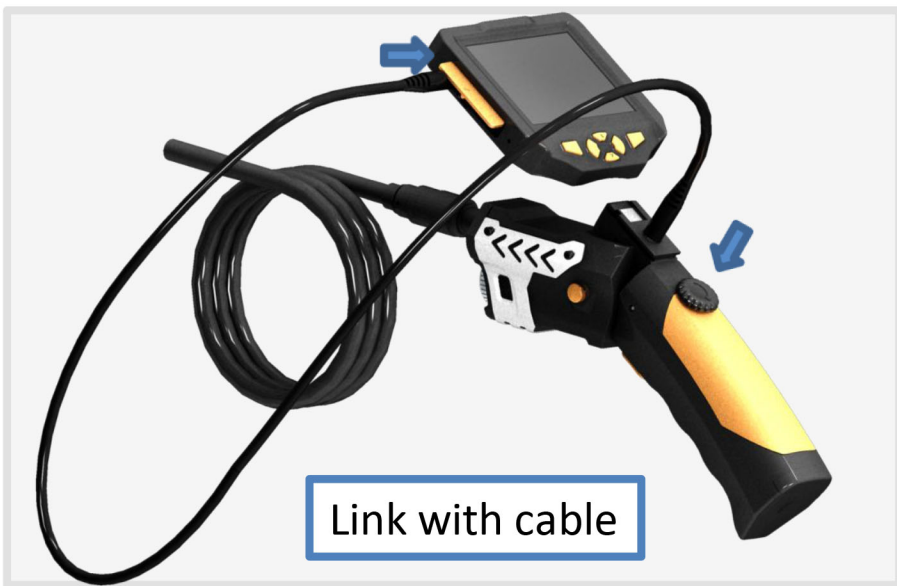
No

Reset settings

Yes

No

Wired Remote Link Mode



TECHNICAL SPECIFICATIONS

Monitor:

Screen Type: 3.5 in. (88.9mm) Color LCD

Resolution: 320*240 pixels (QVGA)

Rotation: 360° rotation

Video Recording Resolution: 320*240, 640*480, 1280*720 (Pixels)

Image Capturing Resolution: 640*480, 1600*1200, 2048*1536 (Pixels)

Menu languages:

English, German, Chinese, Spanish, French, Russian, Japanese

Port: Remote connect port; AV-out, USB, TF card slot

Camera:

Diameter: 5.5mm

Shaft Diameter: 5.5mm

Shaft Length: 100cm (Optional)

Resolution: 300K pixels VGA

Viewing angle: 67°

Depth of Field: 1.5cm~6cm

Light Source: 4 adjustable high-intensity LEDs

Other:

LED Flash light: 1W CREE LED

Operating Temperature: 32° to 113° F (0° to 45° C)

Power Source: 4*AA battery

Max battery life: 4 - 5 hours

Weight: 445g

Certifications: CE FCC RoHS

Contents:

Digital Endoscope

User's Manual

Probe (Ø5.5mm)

Accessories – pick up hook and magnet

Remote connect cable

Video-out cable

Custom Hard Case

Packaging Information

H: 361mm

W: 400mm

D: 130mm

EU Environmental Protection

Waste electrical products should not be disposed of With household waste. Please recycle where facilities Exist. Check with your local authority or retailer for Recycling advices.

