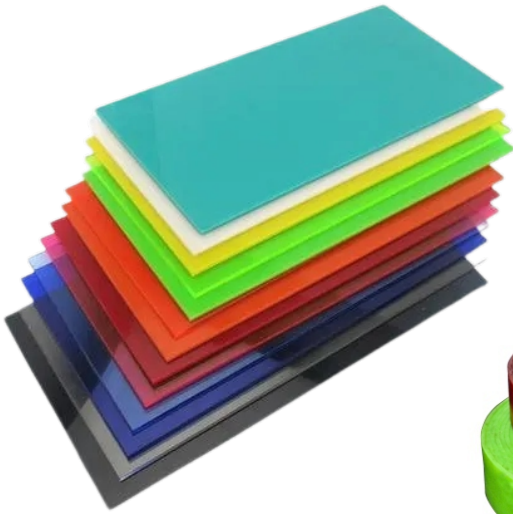




KRISHH PLASTIC INDUSTRIES



Kiritbhai : 9974701038

8866534096

8488888243



MAKE IN INDIA

ABOUT US

We "Krish Plastic Industries" Founded In The Year 2007 Are A Renowned Firm That Is Engaged In Manufacturing A Wide Assortment Of Textile Machine Plastic Sheet, Power Loom Spare Parts, Textile Machinery Part, Textile Machine Guide Rails, Etc. We Have A Wide And Well Functional Infrastructural Unit That Is Situated At Ahmedabad (gujarat, India) And Helps Us In Making A Remarkable Collection Of Products As Per The Global Set Standards. We Are A Sole Proprietorship Company That Is Managed Under The Headship Of "Mr. Gautam Bhai" (Manager) And Have Achieved A Significant Position In This Sector.

We Have A Well-developed State-of-the-art Infrastructure Which Is Spread Over A Large Area. The Entire Manufacturing Unit Is Well-equipped With All The Modern Machinery, Tools And Equipment That Help In Producing A Quality Assured Range Of Products. The Dexterous Professionals Appointed By Us Make Sure That Only Quality-assured Products Are Offered To The Clients Within The Stipulated Time-period. In Addition, We Examine The Quality Of Products Offered By Conducting A Series Of Tests To Examine The Flawlessness Before The Final Dispatch.

MACHINERY PARTS





65x50mm Roller Bush



Single Bearing Bush



Centering Wheel (2)



35mm Wheel



PU Centering Wheel



35mm Pressure Wheel



Small Pressuring Wheel



25mm Wheel



25mm Pressure Wheel



Single Centering Wheel



PU Roller



Disc Holder



Disc Holder Dish 2.2mm&1.8mm



Digital Gargadi



Digital Gargadi (2)



Display Gargadi



Centering Wheel MS Pin



Roller Bush Pin



Pin 20x165 MS Pin(2)



Pin 20x140 20x100



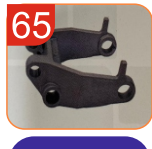
Pin 20x140 20x100 (17)



Hydraulic Jack T Glantr



Brush Bush (2)



Bracket



28t Gear Coupling Set



Block



208 C Clamp



207 Double C Clamp



55 Single C Clamp



25mm Single C Clamp



L Clamp



Ceramic Clamp



16mm Guide Bar Clamp



16mm Clamp



Bolt



Double Bearing Knob (1)



Double Bearing Long Knob



Double Bearing Knob



Single Bearing Knob



Narlin Sleeve



Narlin Sleeve (2)



Ceramic Parts



Pin 20x140 20x100 (16)



Nurlin Bush



Pedestal Lock



Pedestal Cover (2)



207 Pedestal Cover



Pedestal Cover



35mm Belt MS Pulley Set



16mm Round Belt Pulley



Roller Bush Pin (2)



Roller Pin



Pin 20x140 20x100 (15)



Pin 20x95mm



DSC00230



20mm Guide Clamp



DIGITAL GAREDI



DUAL BEARING NOVE



BELT PULLEY



A-SECTION BELT PULLEY



Mounting Rubber



Lock



Left & Right Plug



Nozzle



10x6, 12x6, 14x6 Elevator Bucket



5mm PU Straper Strips (1)



Display Roller



L&R Impeleer



BELT PULLEY



Roller (3)



Roller (2)



PVC Strips

FILTER



Filter



Filter



Filter



Filter



Filter

PLASTIC CORE FILTER



Filter Candle



Filter Candle

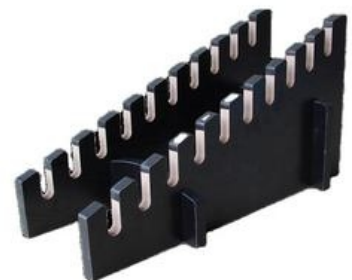
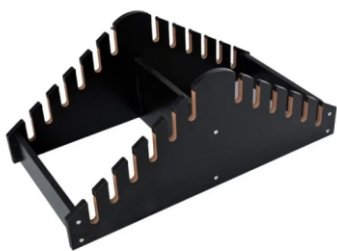


Filter Candle



Filter Candle

TILES DISPLAY STAND



FILTER PRESS



Filter Press Handle



Filter Press Handle



Filter Press Valve



Filter Press Valve



Filter Press Valve



Filter Press Valve



Filter Press Nut bolt



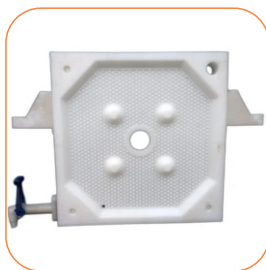
Filter Press Nut



Filter Press Nut



White Square Filter Plate



Square Filter Plate



Round Filter Plate

PROFILE



1
Y Type 16x18 Plastic Strips



2
UHMW Strips



3
UHMW Red Plastic Strips



4
UHMW Red Plastic Strips



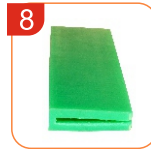
5
UHMW Plastic Strips (10x5mm) (1)



6
UHMW Plastic Strips (1x3mm)



7
UHMW Green Plastic Strips



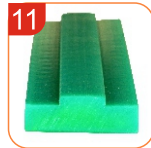
8
U Type Guide



9
Square Sheet



10
Square Sheet (2)



11
Plastic Strips



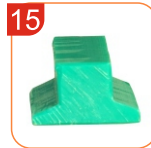
12
Plastic Strips (6)



13
Plastic Strips (5)



14
Plastic Strips (3)



15
Plastic Strips (2)



16
Plastic Strips (1)



17
J Type Plastic Strips



18
J Type Plastic Strips (2)



19
J Type 10x40 Plastic Strips



20
H Type 20x35 Plastic Strips



21
Double Chain Guide



22
Cut Flow Plastic Strips



23
Chand Type Plastic Strips



24
Chain Guide



25
Chain Guide (2)



26
C Section Plastic Strips



27
B Section 20x40 Plastic Strips



28
A Type Chain Guide



29
30x20 Plastic Strips



30
20x35 Plain Guide



31
18mm Round Belt



32
16x45 Plastic Strips



33
16x35 Plastic Strips



34
16x30 Plastic Strips



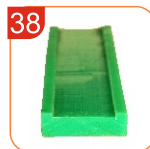
35
16x18 V Type Plastic Guide



36
15mm Round Belt



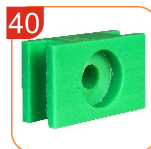
37
12x45 Plastic Strips



38
12x45 Plastic Strips (2)



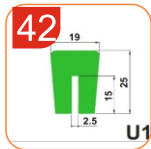
39
12mm Round Belt Guide



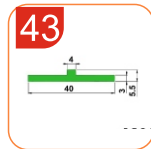
40
Block



41
Plastic Strips (4)



42
Plastic Strips



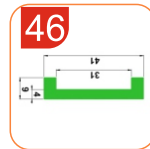
43
UHMW Plastic Strips



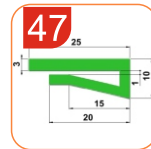
44
UHMW Plastic Strips



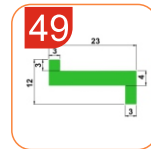
45
UHMW Plastic Strips



46
UHMW Plastic Strips



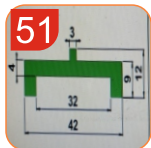
47
UHMW Plastic Strips



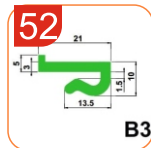
49
UHMW Plastic Strips



50
UHMW Plastic Strips



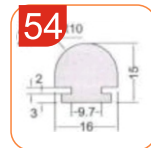
51
UHMW Plastic Strips



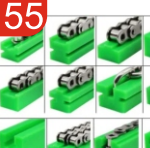
52
UHMW Plastic Strips



53
UHMW Plastic Strips



54
Plastic Strips



55
UHMW Plastic Strips

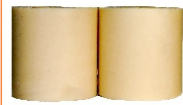
RODS & SHEET



Cast Nylon Pipe



PP Rod



Cast Nylon Rod



Nylon Rods



Delrin Rods



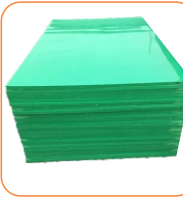
Teflon/PTFE Rods



PU Rods



PP sheet



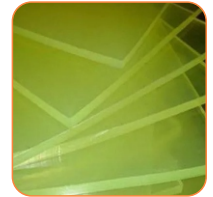
Hdpe Green Sheet



Nylon Sheet



Teflon PTFE Sheet



PU sheet



UHMWPE RODS



UHMWPE 10-120MMSheet



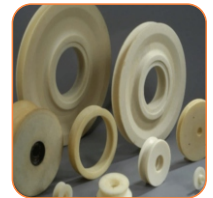
Delrin Sheet



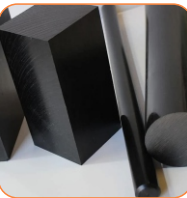
Castnylon Sheet



Castnylon Slipper Pads



Castnylon Products



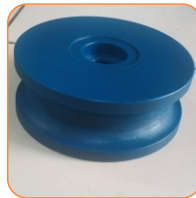
HDPE RODS



Hdpe Hollow Rods



Hollow Pipe



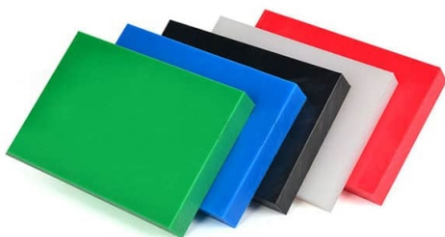
Round Sheet



Plastic Product



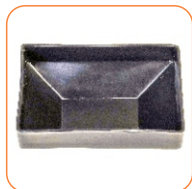
Cast Nylon Hollow Pipe



ELEVATOR BUCKET



Sowel Type Bucket



Uhmwpe Bucket



14" X 7" Bucket



10"x6"
12"x6"
14"x6"
Bucket



10"X6"
Bucket



Bucket Bolt



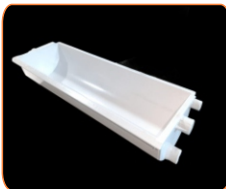
8"X5"
Bucket



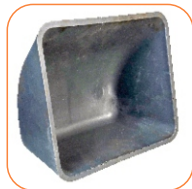
5"X5"
Bucket



16"X8"
Bucket



Z Type Ele
Bucket



12" Sowel
Bucket

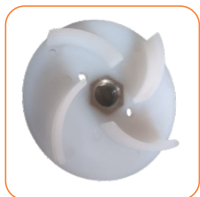


Bucket Bolt

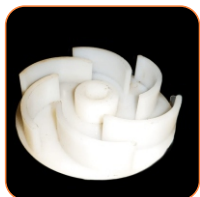
IMPELEER



UHMW
Impeleer



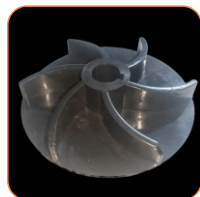
R & L Impeleer



Impeleer



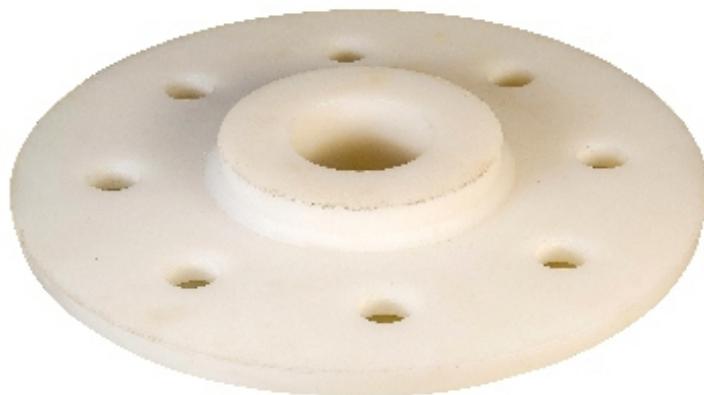
Roter



Roter



Roter
Fan



Sand Impeleer

WHEEL



100x80
Nylon Wheel



70x80
UHMW WHEEL



70x80 UHMW
Wheel



70x80 Taper
Roller Wheel



70x80 Taper
Orange Wheel



70x80 Taper
Ivory Wheel



70x80
Straight Wheel



70x80
PU Wheel



70x80 Full
Taper Wheel



8x2 I Type
Wheel



8x2 Fan Type
Nylon Wheel



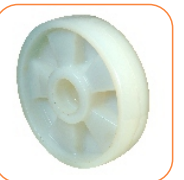
8X2 Caster
Wheel Set



7x2 Itype
Orange Wheel



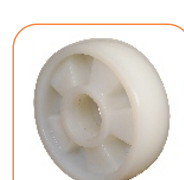
7x2 I Type
Wheel



7x2 Fan
Type Wheel



6x2 S Type
Wheel



6x2 Nylon
Wheel



6x2 Caster
Wheel Set



6x2 Block



4x2 S Type
Wheel (2)



4x2 S Type
Wheel



4x2 Caster
Wheel Set



PU Wheel



Swivel



Fixed



Lock



Swivel



3X1.5 PU
WHEEL



4X2
Swivel Wheel



Swivel Wheel



6X2 CIPU WHEEL



PU WHEEL



MOVEBLE
WITH BREKE



Fixed



Lock



MOVEBLE WHEEL

HAND PALLET TRUCK



HAND PALLET TRUCK PRODUCT



1
HAND PALLET
JECK PUMP
(3 ton ,35 mm)



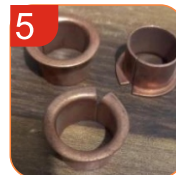
2
HAND PALLET
JECK PUMP
(31.5 mm , 2.5 ton)



3
HAND PALLET
JECK PUMP 5
TON 40 mm



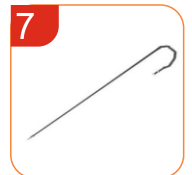
4
HAND PALLET
HANDAL



5
HANDAL BUSS
COPPER



6
HANDAL
BUSS BRASS



7
CHEN SET



8
CHAIN BOLT



9
FOOD LIVAR



10
RELEASING
VALVE



11
VARM SET



12
VALV BUSS 8
MM PIN &
SPRING



13
VALV BUSS
10 MM PIN &
SPRING



14
SPRING
10 MM



15

HAND PALLET BRACKET
BRACKET INVESTMENT



16

HAND PALLET
GLANT



17

NYLON WHEEL
80*70



18

PP CP WHEEL
180*50



19

NYLON TAPPER
WHEEL 70*82



20

SMALL WHEEL
TENS WHEEL



21

SMAL CUVAR



22

PU WHEEL
180*50



23

PU WHEEL
70*80



24

PU WHEEL
150*50



25

PALLET PALSTIC



26

PUS ROD



27

THARD 20*75



28

U CLAMP



29

LEFT RIGHT



30

550 BRACKET
ARM SET



31

82X70
ROLLER WHEEL



32

80x60
Wheel



33

HARD CROM
PISTON 18*100



34

BIG PISTON
35 MM



35

BIG PISTON
31.5 MM



36

PISTON
BUSS BIG



37

PISTON BUSS
SMALL



38

12 MM PIN
ROALL



39

15 MM
PIN ROALL



40

PIN 176*25



41

PIN 20*105
Senter Holl



42

PIN 20*105
Cros Holl



43

PIN 20*95



44

PIN 16*85



45

PIN 16*100



46

PIN 20*165



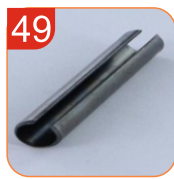
47

Menny
Handal Pin



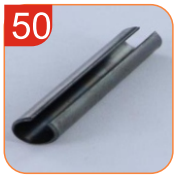
48

PUM
Dowal Pin



49

Dowal
PIN 5*35



50

DOWAL
PIN 3*25



51

PLET 2.5 TON
INVESTMENT



52

Thas Bearing
51111



53

Thas Bearing
51112



54

6204 2RS



55

35 MM
SEAL KIT



56

31.5 MM
SEAL KIT



57

SPRING
90 MM



58

SPRING
100 MM



59

SPRING
110 MM



60

SPRING
DUBBY HALF