



DERM EASE

The Natural Touch

DERM
EASE

Acne Ease

Foaming Face Wash

Ingredients

Aqua, Sodium lauryl ether sulphate, Propylene glycol, Glycerine, Aloe barbadensis (Aloevera Extract), cocamidopropyl betaine, Triethanolamine, Carbomer, DL-Alpha Tocopheryl Acetate, Glycolic acid, Salicylic acid, Lactic acid, Phenoxyethanol, Ethylenediaminetetraacetic acid, Methylisothiazolinone & Fragrance

Benefits:

- Rejuvenates the skin by encouraging the shedding of old and dead skin cells.
- Reduces the number of superficial wrinkles.
- Improves skin texture and tone.
- Unblocks and cleanses the pores

Direction for use

- Pump out required quantity of ACNE EASE foam on palm and massage gently on your wet face and neck with an upward circular motion.
- Rinse off with clear water and pat your face dry.
- Apply appropriate moisturizer in case of dry skin.



Also available in 60ml.

DERM EASE

Aloe Ease Lotion

Ingredients

Aqua, Light Liquid Paraffin, Glycerine, Glyceryl Monostearate, Caprylic Capric Triglyceride, Theobroma Cacao (Cocoa Butter), Propylene Glycol, Aloe Barbadensis (Aloe Vera Extract), Emulsifying Wax, Phenoxyethanol, Cetyl Alcohol, Cera Alba, Dimethicone, DL-Alpha Tocopheryl Acetate, Triethanolamine, Carbomer, Methyl Paraben, Propylparaben, Ethylenediaminetetraacetic Acid and Fragrance

Benefits:

- It Provides your skin 24 hour moisturizing
- It helps to reduce dryness and crankiness
- It makes skin soft and radiant



Feel Good Look Great...

DERM
EASE

Fresh Ease

BODY WASH

*For refreshing &
glowing skin*



Ingredients

Aqua, Decyl Glucoside, Cocamidopropyl Betaine, Sodium Laureth Sulfate, Sodium Cocoyl Isethionate Glycerine, Cocodiethanolamide PEG-150 Distearate, Citric Acid, Phenoxyethanol, Ethylenediaminetetraacetate, Methylchloroisothiazolinone, Aloe Barbadensis (Aloevera Extract), Rice Extract Soapwort Extract, Coconut Oil & Fragrance

Benefits

- It makes skin extra smooth and super soft.
- It gives natural glowing skin.
- It cleanses all the impurities and dead cells from your body.



Active CHARCOAL FACE WASH

ENRICHED WITH:

ACTIVATED CHARCOAL & VITAMIN E

DERM EASE

SHOW THE WORLD A HEALTHY FACE!

Ingredients:

Aqua (water), sodium lauryl ether sulphate, cocamidopropyl betaine, glycerine, propylene glycol, hydroxyethyl cellulose, aloe barbadensis extract (aloe vera extract), hydroxyethyl urea, dl-alpha tocopheryl acetate, phenoxyethanol, methylchloroisothiazolinone, ethylene diamine tetra acetate, activated charcoal & fragrance.

Benefits

- Helps in cell generation and increases blood circulation.
- Protects the skin from free radicals.
- Gently makes the skin lighter, brighter and smoother
- Tightens the pores, makes the skin toned and refreshing

Gives you smooth & silky skin

**DERM
EASE**



Moist Ease

Moisturizing Lotion With Vitamin E



Ingredients:

Aqua, Light Liquid Paraffin, Glycerine, Glyceryl Monostearate, Emulsifying Wax, Cera Alba, Aloe Barbadensis (Aloe Vera Extract), Theobroma Cacao (Cocoa Butter), Caprylic caprit Triglyceride, Isopropyl Myristate, Dimethicone, Phenoxyethanol, Cetyl Alcohol, DI-Alpha Tocopheryl Acetate, Stearic Acid, Triethanolamine, Methyl Paraben, Ethylenediaminetetraacetic Acid, Borax, Propylparaben, Carbomer, Allantoin and Fragrance.

Benefits:

- Moist Ease Lotion provides your skin 24hrs moisturizing with vitamin E.
- It Hydrates and nourishes skin.
- It Suits in all wether conditions.

Direction of use:

Apply atleast twice daily to all skin areas requiring special attention. Also specially recommended for the use after washing.

Also available SHEA BUTTER lotion

DERM EASE

Strawberry Face Wash

Your daily dose of freshness...

Ingredients:

Aqua (Water), Sodium Lauryl Ether Sulphate, Fragaria Chiloensis (Strawberry Extract), Aloe Barbadensis (Aloevera Extract), Xanthan Gum, Cocamidopropyl betaine, Glycerine, Phenoxyethanol, Allantoin, Lactic Acid, Triethanolamine & Fragrance.

Benefits:

- Reduces the numbers of superficial wrinkles
- Improves skin texture and tone.
- Unblocks and cleanses the pores.

Direction of use:

Take out a small quantity of face wash from tube on wet palms. Rub palms against each other to work up the lather and gently massage on face for 2-3 minutes. Rinse with water & dry.



DERM EASE

Get Smooth & Blemish Free Skin

CALO EASE | Lotion

Ingredients:

Calamine, Aqua, Light Kaolin, Castor Oil, Glycerin, Zinc Oxide, Zinc Carbonate, Emulsifiers, Preservatives, Perfumes and permitted Colours.

Benefits:

- Protects from itching due to sun burns, prickly heat, insect bites, skin rashes and other minor skin conditions.
- It provides protection to the skin
- It helps to remove acne & dead skin
- It gives nourishment and Oil control

Apply everyday for clear & beautiful skin.



DERM EASE



RE-GLOW Serum

Skin Radiance Formula

Ingredients:

Aqua, Ethyl Ascorbic Acid, Propylene glycol, Aloe Barbadensis, Polysorbate-20, L-glutathione, Sodium Benzoate, Sodium Hyaluronate, Xanthan gum, DL Alpha Tocopheryl Acetate & Fragrance.

Benefits

- This rare formula diminishes sun spot and blemishes.
- Plumps the skin while minimizing wrinkles.
- One of the most powerful antioxidants that assists to Reduced sunburn cells.
- It provides skin a youthful glow.

Direction for use:

- Take 1-2 drops of the serum on your hand and apply on Your face, in case of any itching or burning issue, mix the Serum with any moisturizers.
- Clean up your face at first & then spread few drops of the Serum evenly over your face, massage it for 2-3 minutes and Let it soak properly for 10 minutes and wash the face after.
- Then moisturize your skin with a good moisturizer.



Wash Ease

Your Intimate Hygiene

Hygiene Wash & PH Balance Formula with Lactic Acid

Ingredients :

Aqua (water), Sodium Lauryl Ether Sulphate, Cocoamidopropyl Betaine, Glycerin, Lactic Acid, Aloe Barbadensis (Aloe vera Extract), Peg-7 Glyceryl Cocoate, Peg-40 Hydrogenated Castor Oil, Calendula Officinalis (Calendula Extract), Rosmarinus Officinalis (Rosemary Extract), Phenoxyethanol, Melaleuca Alternifolia (Teatree Oil), Hippophae Rhamnoides (seabuckthorn oil), L-Glutathione & Fragrance.

Benefit:

Daily Washing with Wash Ease leaves you with a fresh sensation & maintains healthy vaginal flora.
Prevents unpleasant odour & irritation in the intimate areas.

Direction For Use:

Take a small amount of Wash Ease on wet hand apply externally on intimate area. Leave for 2-3 minutes and then wash with water.

DERM EASE

Ban The Tan



DERM EASE

100% Sun Coverage

Sun Ease | Sunscreen Lotion



Ingredients:

Aqua (water), octyl methoxycinnamate, butyl methoxydibenzoylmethane(avobenzone), oxybenzone (benzophenone-3), stearic acid, glyceryl monostearate, propylene glycol, isopropyl myristate, caprylic capric triglyceride, zinc oxide (micronized), cetyl alcohol, aloe barbadensis (aloe vera extract), emulsifying wax, dimethicone, triethanolamine, phenoxyethanol, potassium sorbate, laureth- 23, carbomer, ethylenediaminetetra acetate & fragrance.

Benefits:-

- SPF 30 is quick drying, non oily, non greasy, sweat-proof Sunscreen Lotion with a maximum UV Protection factor to protect you from damage caused by exposure to UV rays.
- Enriched with dermatologist approved activities. Sun Ease Lotion SPF 30 is a unique water - soluble UV-B Sunscreen with high UV absorbing properties.
- It will not sweat into your eyes as it's a clear lotion , So it won't leave a white residue on the skin.



DERM EASE

Keshcare | Hair Oil



Feel the
bounce
in your
hair

Ingredients:-

light liquid paraffin, sesamum indicum seed oil (til oil), eclipta alba (bhringraj extract), emblica officinalis fruit extract (amla extract), Bacopa Monnieri (brahmi extract), aloe barbadensis (aloevera extract), camphor, menthol, butylated hydroxytoluene & fragrance.

Benefit:

- Promotes hair growth, conditions hair, reduces dandruff.
- Makes hair healthy and lustrous & strengthens hair.

Direction of use:

Take sufficient quantity of hair oil and apply on wet hair with the help of your fingertips to ensure it reaches your scalp. Make sure to spread evenly. Leave it for 3 hour or preferably overnight for better results. Wash it off with any shampoo.

DERM
EASE



FOOT EASE

Ingredients:

aqua (water), urea, light liquid paraffin, petrolatum (white petroleum jelly), sorbitol, cetostearyl alcohol, stearic acid, glyceryl monostearate, emulsifying wax, cyclomethicone, triethanolamine, allantoin, phenoxyethanol, menthol, lactic acid, methyl paraben, propylparaben, ethylenediaminetetraacetate & fragrance

Benefits:

- This unique formulation moisturizes, softens and soothes even the toughest, driest skin.
- The light liquid paraffin and white petroleum jelly moisturizes the cracking of the skin due to their deep penetrating technique treatment.



feel light feel smooth



DERM EASE

Ease Tone

Everlasting Refreshment

Ingredients:

Aqua, Rosa Damascena Flower Water, Propylene Glycol, PEG-40 Hydrogenated Castor Oil, Aloe Barbadensis (ALOEVERA EXTRACT), Sodium Pyrrolidone Carboxylic Acid, Citrus Medica Limonum (LEMON OIL), Phenoxyethanol & Methylchloroisothiazolinone.

Benefits:

- This Skin toner acts as a cooling and refreshing agent.
- It tones, nourishes and balance the skin.

Direction for use:

Moisten a piece of cotton with this toner, apply all over clean face and neck area. Add to your face pack for refreshing and glowing skin.

Ingredients:

Aqua (water), light liquid paraffin, cetostearyl alcohol, isopropyl myristate, glyceryl Monostearate, stearic acid, octyl methoxycinnamate, emulsifying wax, propylene glycol, nymphaea Odorata (water lily) extract, cyclomethicone, dimethicone, undecylenoyl phenylalanine, sodium Palmitoyl proline, allantoin, methyl paraben, propylparaben, triticum durum (wheat germ oil), Ethylenediaminetetraacetate, triethanolamine & fragrance.

Benefits:

1. Lightens the skin and reduces dark spots.
2. Supports in the reduction of skin blemishes.
3. Restores skin suppleness
4. Leaves skin moisturized
5. Helps promote healthy glowing skin.

Direction of Use:

After face cleansing, apply an appropriate amount of lightening cream onto face, gently massage in circular motion to help better absorption.

Face Cream
DERM
EASE



Get Glam. Be Glamorous.

DERM EASE

Hand Cleanser & Hand Wash



Ingredients:

Aqua, Sodium Lauryl Ether Sulphate, Cocamidopropyl betaine, Sodium Lauryl Sulphate, Glycerine, Cocomonoethanolamide, Aloe Barbadensis (Aloe vera Extract), Sodium Chloride, Phenoxyethanol, methylisothiazolinone

Direction

- Pump into DRY hands • Rinse and dry thoroughly.
- Lather vigorously for at least 15 second.

Benefits:

- Require less time than hand washing
- Act quickly to kill microorganisms on hands
- Reduce bacterial counts on hands
- Do not promote antimicrobial resistance.

100% Germs free hands

DERM EASE

ILITE EASE UNDER EYE CREAM

The wow is in the results!

Ingredients:

Aqua, Cetostearyl Alcohol, Glyceryl Monostearate, Emulsifying Wax, Light Liquid Paraffin, Stearic Acid, Kojic Acid Dipalmitate, Aloe Barbadensis (Aloevera Extract), Cyclomethicone, Glycerine, Cucumis Sativus Extract, Triticum Durum, Magnesium Ascorbyl Phosphate, Phytonadione, MethylParaben, Triethanolamine, Sodium Metabisulfite, Propylparaben Sodium sulfite, Ethylenediaminetetraacetic Acid, Allantoin and Fragrance.

Benefits:

Moisturizes, provides noticeable tightening and lifting, tones and improves appearance of wrinkles and fine lines.

Direction for Use:

Press pump until a small amount of cream comes out from rollerball. Use gentle pressure and apply to under- eye area until it's absorbed morning and night.



Tea Ease

Ingredients:

Aqua (water), stearic acid, glycerine, camellia sinensis (green tea) extract, cetostearyl alcohol, citrus medica limonum (lemon) extract, sodium pyrrolidone carboxylic acid, preservatives, potassium hydroxide, polysorbate 20, ethylenediaminetetra acetate, sodium hydroxide & fragrance. Green tea nude cover provide the benefit of blemish free concealing, sun block effects, whitening moisturizing and reduction of lines providing a long lasting smooth and ultra light feel to nourish and perfect your skin. This beauty secret to natural beauty is definitely worth sharing.

Benefits:

1. Natural and flawless coverage for all skin tones
2. Non greasy formula that provides natural matte finish.
3. Spreads with nano fine texture, resulting in even tone and natural look.
4. Supplies essential nutrients to revitalize skin, resulting in visibly fairer and more radiant skin.
5. Provides all day hydration for soft, supple skin
6. Provides SPF 30/PA++ to protect skin against UV rays and harmful free radicals.
7. Help reduces the formation of lines

Direction:


To apply after daily facial care. Simply squeeze an adequate amount on your finger and tap gently on your skin. Suitable for all skin types.



Instant
Flawless Skin



DERM
EASE



DERM EASE

MARK LESS

Anti Stretch Mark Cream

Ingredients:

AQUA (WATER), allium cepa (ONION) EXTRACT, aloe barbadensis (ALOEVERA) EXTRACT, dimethicone, light liquid paraffin, butyrospermum parkii (SHEA BUTTER), cetostearyl alcohol, glyceryl monostearate, emulsifying wax, glycerine, argania spinosa kernel oil (ARGAN OIL), stearic acid, sodium ascorbyl phosphate, dl-alpha tocopheryl acetate, saccharide isomerate, d-panthenol, phenoxyethanol, allantoin, methyl paraben, propylparaben, ethylenediaminetetraacetate & FRAGRANCE.

Benefits :

- 1.HELPS TO PREVENT STRETCH MARKS.
- 2.HELPS TO REDUCE EXISTING STRETCH MARKS.
- 3.HELPS TO REDUCE THE SKIN'S ELASTICITY.
- 4.IT IS ALSO USED DURING WEIGHT LOSS TO PREVENT SKIN SAGGING.

Direction for use:

TAKE SMALL QUANTITY OF CREAM FROM TUBE. APPLY AT AFFECTED AREA AND DO GENTLY MASSAGE UNTIL IT ABSORBS ATLEAST TWO TIMES A DAY AND AT NIGHT BEFORE GOING TO SLEEP. APPLY FROM THE BEGINNING OF PREGNANCY UNTIL ATLEAST 1 MONTH FOLLOWING CHILDBIRTH.

*Increase the Stretchness
& Strength of the skin...*

DERM EASE

FIRM EASE Anti Dandruff Shampoo

Ingredients:

Aqua (water), sodium lauryl ether sulphate, sodium lauryl sulphate, cocamidopropyl betaine, ethylene glycol monosterate, cocomonooethanolamide, glycerine, propylene glycol, polyquaternium-7, zinc pyrithione, ketoconazole, cetrimonium chloride, phenoxyethanol, potassium sorbate, melaleuca alternifolia oil (tea tree oil), guar hydroxypropyltrimonium chloride, d-panthenol-ethylenediaminetetra acetate & fragrance.

Benefits :

With fast action, it effectively fights the root cause of dandruff to give unbeatable dandruff protection and eliminates dry flaking. An enhanced conditioning formula ensures that the hair is not stripped of essential oils, leaving hair soft and supple.

Direction for use:

Apply on wet hair and massage onto scalp then rinse with normal water. Repeat if necessary.



DERM
EASE

Get
Smooth
& Rich
Hair



Hair Ease | Hair Serum

Ingredients:

Cyclopentasiloxane (and) Dimethiconel, cyclomethicone Isopropyl myristate, C12-15 Alkyl benzoate, Argania spinosa kernel oil (Argan oil), Prunus Amygdalus dulcis (Sweet almond) oil, (dl- Alpha tocopheryl acetate) vitamin E & Fragrance.

Benefits:

Hair Ease serum with vitamin-rich, Almond oil and - Argan oil which help to nourish hair & tame frizz; while its Unique “shine enhancer” helps to give hair a gorgeous, Shiny & glossy finish moisturizer, smoothens & detangles, Dry, unruly hair protects hair from damage caused by uv rays.

Direction of use:

Apply in each section of dry or towel-dried hair.
Massage Gently with fingertips onto the scalp.

DERM EASE



Get healthy & wrinkle free skin

AGE EASE

Whet Germ Oil | Vitamin E | Coenzyme Q10

Ingredients:

Aqua, Aloe Barbadensis (Aloevera Extract), Light Liquid Paraffin, Cetostearyl Alcohol, Octyl Methoxycinnamate, Cyclomethicone, Glycerol Monostearate, Propylene Glycol, Triticum Durum, Emulsifying Wax, Stearic Acid, Ubiquinone, DL-Alpha Tocopheryl Acetate, Titanium Dioxide, Phenoxyethanol, Methyl Paraben, Propylparaben, Allantoin, Ethylenediaminetetraacetic Acid & Fragrance.

Benefit

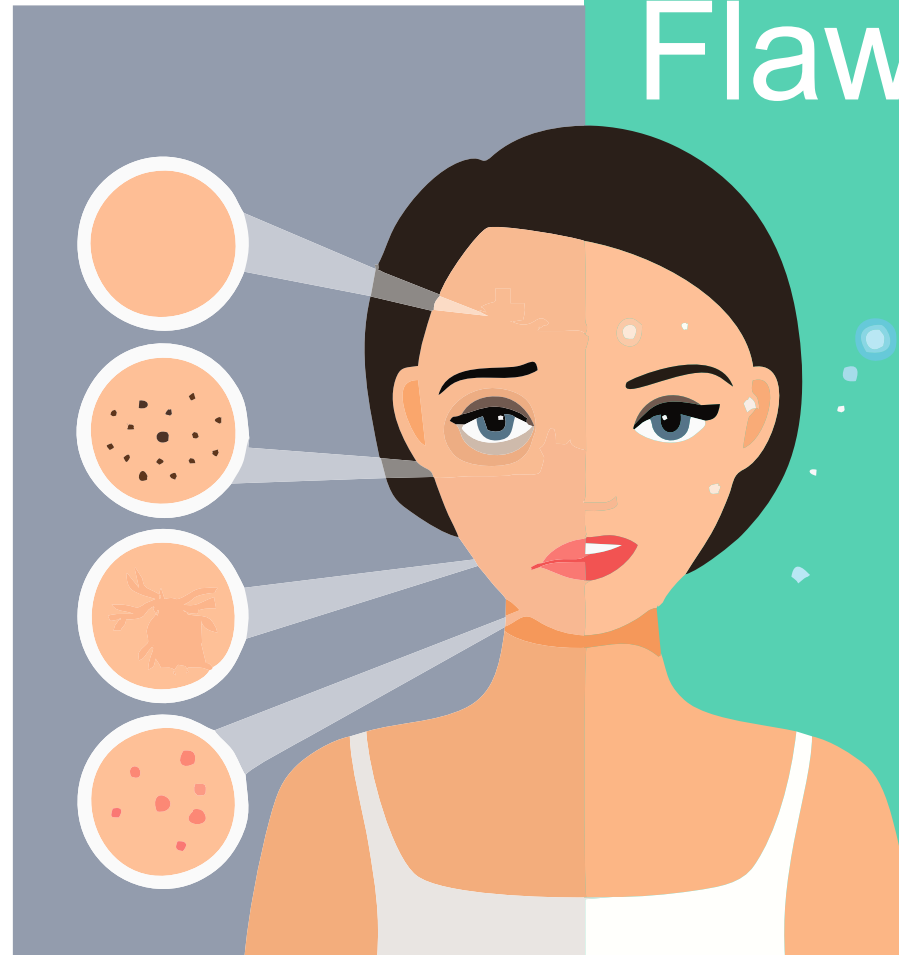
- AGE EASE cream containing coenzyme q10 and aloevera extract which are in active form to fight against wrinkles and makes the skin light and young.
- The ubiquinone has an antioxidant property to enhance the anti-aging ingredients while the aloevera moisturises and glows the skin tone.
- Through its specific formula which is rich in active ingredients makes the product particularly effective.

Directions for Use :

Apply a small amount of product on the face and massage with short and circular movements, until the cream gets fully absorbed.

DERM EASE

SPOT CARE



Ingredients :

Aqua (water), cetostearyl alcohol, glyceryl monostearate, glycerine, magnesium ascorbyl phosphate, emulsifying wax, light liquid paraffin, kojic acid, dipalmitate, arbutin, morus alba (mulberry extract), aloe barbadensis (aloevera extract), octyl methoxycinnamate, stearic acid, triticum vulgare (wheat germ oil), cyclomethicone, triethanolamine, ethylenediaminetetra acetate, titanium dioxide (micronized), sodium sulfite, sodium metabisulfite, methylparaben, propylparaben & Fragrance.

Benefit

- Burn scars.
- Post pimple scars.
- Dark circles under the eyes.
- Extra pigmentation from face ,nose ,cheeks.

Flawless Skin

helps
prevent
marks



DERM
EASE

(A GMP Certified Company)

Contact for Monopoly Rights | Franchise Needs | PCD Distributorship



+91 98111 - 83447 & +91 99680 - 10101



yaxonbiocare@gmail.com & info@yaxonbiocare.com



www.yaxonbiocare.com