



*Company Profile*

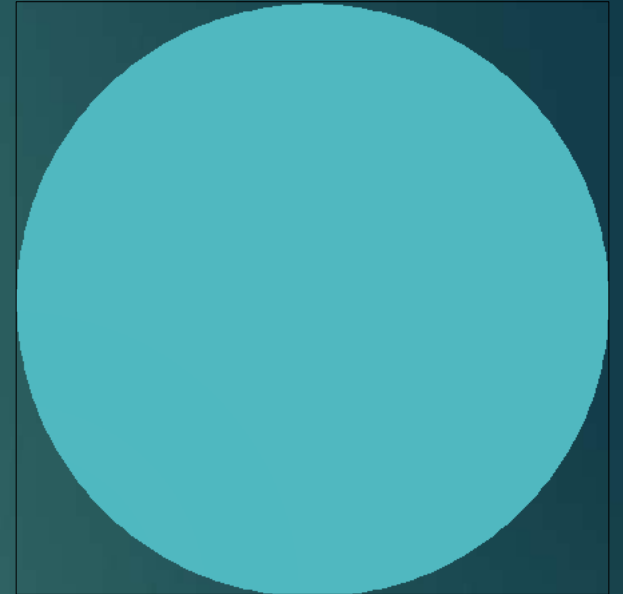
---

*Adler Systems Inc started in year 2014 with industry major team of experts to provide Qualified & Innovative products to the ART Industry*



*Our Products*

- 1. IVF Workstations*
- 2. Andrology Workstation*
- 3. Anti Vibration Tables*
- 4. Air purification System with VOC Control.*
- 5. Aspiration Trolley*
- 6. Short term Incubator for Workstation & ICSI*
- 7. Heating Block*
- 8. Automatic Cylinder Changeover Unit*
- 9. Glass stage Warmer*



## *IVF Workstations*



### *3 Models Available*

- 1. Adler Workstation Basic*
- 2. Adler Workstation Dual*
- 3. Adler Workstation Premium*



**1<sup>st</sup> In the Indian Industry**

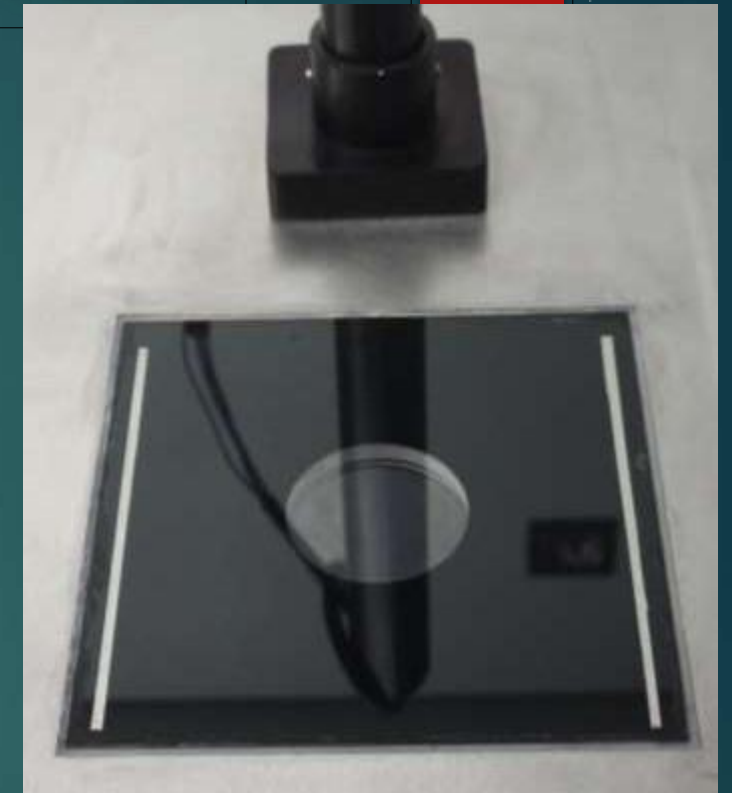
- 1. Pre Installed Workstations takes maximum 1 Hour for Installation.*
- 2. Membrane / Touch Keypad for the easy operation.*
- 3. 2.5mm thick in-house made ITO glass stage.*
- 4. LED Light source.*
- 5. Premium Model with PLC based control system & advanced features of ART Industry*
- 6. Short time incubator built in*



*Premium.*

*Membrane keypad with all controls.*

## *Features*



*Flush Mounted Glass Stage.*

*LED Light Source.*



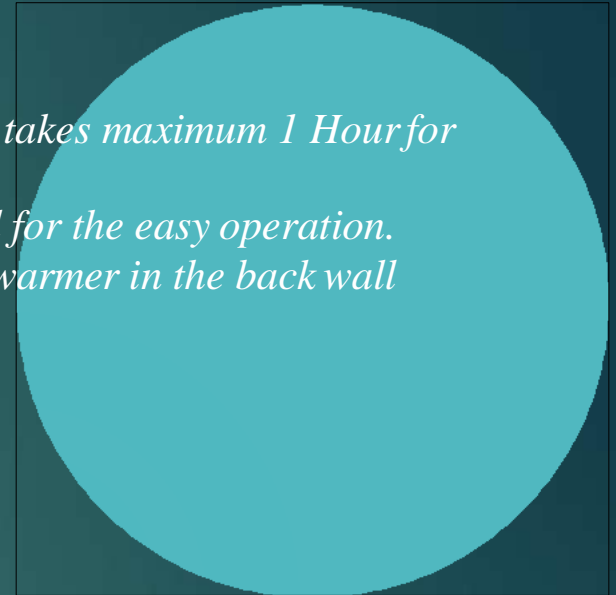
# Andrology Workstations

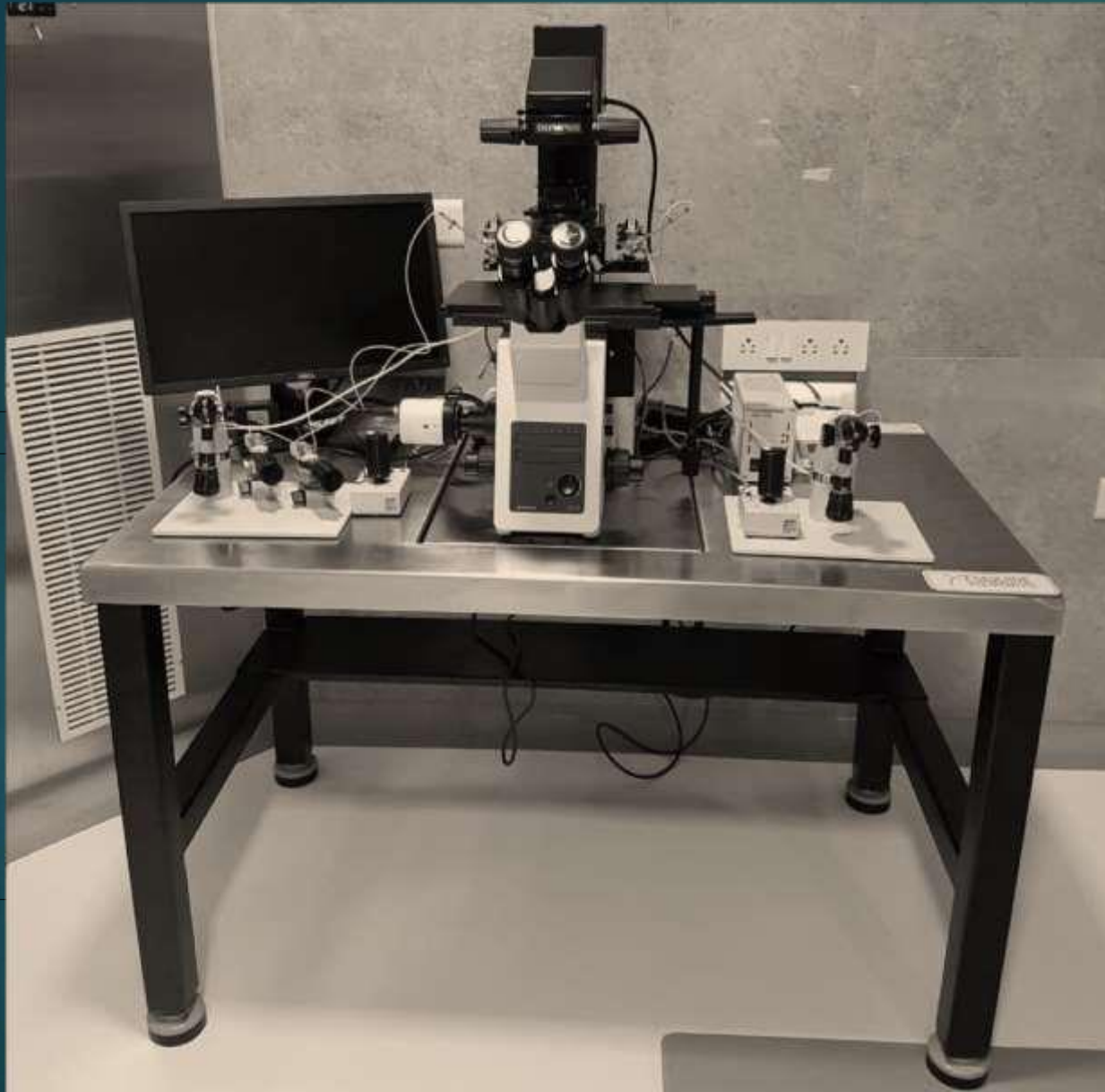
1<sup>st</sup> In the Indian Industry



## Features

1. *Pre Installed Workstations takes maximum 1 Hour for Installation.*
2. *Membrane / Touch Keypad for the easy operation.*
3. *Built-in Incubator or tube warmer in the back wall*
4. *Heated Left side table area*
5. *Built-in monitoring system*





## *Anti Vibration Table*



*The damping systems use column-friction for optimal results.*

*An equilibrated and isolated platform for the inverted microscope*

*Working range 15-72kg*

*Mild Steel powder coating shelf for accessories*

# Air purification System with VOC Control



## 3 Models Available

1. Adler Tower AHU
2. Adler Tower Recirculation
3. Adler Mobile Tower

## 1<sup>st</sup> In the Indian Industry

- 1) An alternate for the conventional AHU
- 2) Effective in reducing the VOC when compared

## Features :

- 1) 4 Stages of filtration
- 2) Optional UVC Germicidal
- 3) Removes VOC & CAC effectively
- 4) Noiseless design ( less than 56dBA )
- 5) Standby / Run Mode
- 6) Effectively covers area up to 200 sgft Continuous operation runs 24hrs 365days
- 7) 70% recirculation 30% fresh air
- 8) Tower Recirculation is a 100% recirculation unit with wheels.



# Air purification System with VOC Control



## 1<sup>st</sup> In the Indian Industry

- 1) Product designed for the OT
- 2) Effective in reducing the VOC during Oocyte Retrieval & Embryo Transfer

### Features :

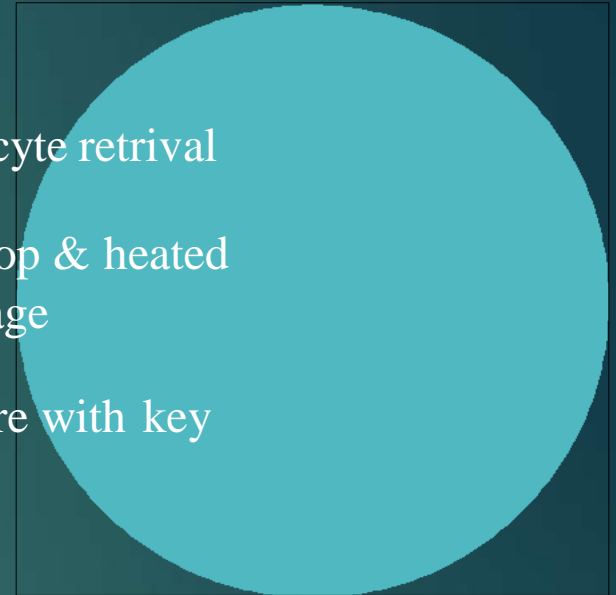
- 1) 3 Stages of filtration
- 2) Optional UVC Germicidal
- 3) Removes VOC & CAC effectively
- 4) Noiseless design ( less than 53dBA)
- 5) Effectively covers area up to 100 sqft Continuous operation runs 24hrs 365days
- 6) 100% recirculation
- 7) Movable with wheels to convenient place

# *Aspiration Trolley*

1<sup>st</sup> In the Indian Industry



1. Mobile trolley for oocyte retrieval
2. Heated smooth tabletop & heated drawer Shelf for storage
3. Adjustable temperature with key



# Short term Incubator for Workstation & ICSI

1<sup>st</sup> In the Indian Industry



- 1) Workstation Incubator is an compactable incubator chamber with premix gas.
- 2) Workstation Incubator chamber has warming temperature of 37 °C
- 3) Analog flow meter for adjusting flow rate of pre mixed gas.
- 4) Flushing and purge function for fast recovery in the chamber.
- 5) One chamber with space for 4 culture dishes.
- 6) Alarm indicated when cylinder is empty.
- 7) Dish Plate is removable.

## Heating Block



### Features :

- 1) Made of GI with powder coat finish
- 2) Ormon PID controller
- 3) Temperature accuracy  $\pm 0.2^{\circ}\text{C}$  Temperature range ambient to  $49.9^{\circ}\text{C}$
- 4) 3 No's of anodised aluminium blocks Each blocks can hold 6 No's of ASP tubes
- 5) Optional  $30^{\circ}$  angle block

# Automatic Cylinder Changeover Unit



## Features :

- 1) 2 Cylinders can be attached
- 2) Compatible for CO<sub>2</sub>, N<sub>2</sub> & Premix
- 3) Max input pressure is 35psi
- 4) Pressure sensor & solenoid operated system
- 5) Automatically changes from empty to full cylinder
- 6) Display read out on the status
- 7) Audible alarm when cylinder becomes empty



## *Glass stage Warmer*

1<sup>st</sup> In the Indian Industry



### Features :

- 1) ITO Based glass stage
- 2) Compatible Nikon, Olympus & Zeiss inverted Microscopes
- 3) Temperature range ambient to 41.0°C
- 4) Temperature accuracy + 0.2°C
- 5) RTD Sensor for more accuracy
- 6) 0.7 mm thick BK7 Glass
- 7) Glass transparency 85%

thank you!

Looking Forward for a long term Business Relation

*Best Regards*

*L. Kuberan*

