



GENERAL PROTOCOL FOR PROFICIENCY TESTING SCHEMES - 2018

1. INTRODUCTION:

LANDMARK Material Testing and Research Laboratory Pvt. Ltd (LRL) is a renowned organisation providing services in the field of mechanical testing of various building materials and soil, technical trainings, research & development. The PT DIVISION of LRL is an NABL Accredited Proficiency Testing Service provider as per ISO 17043:2010 in many parameters & products and going for further enhancement of scope in other products. PT rounds on Soil, Bitumen, Bricks, Paver Blocks and NDT(Concrete) have been completed successfully by the Division since inception.

2. PROFICIENCY TESTING:

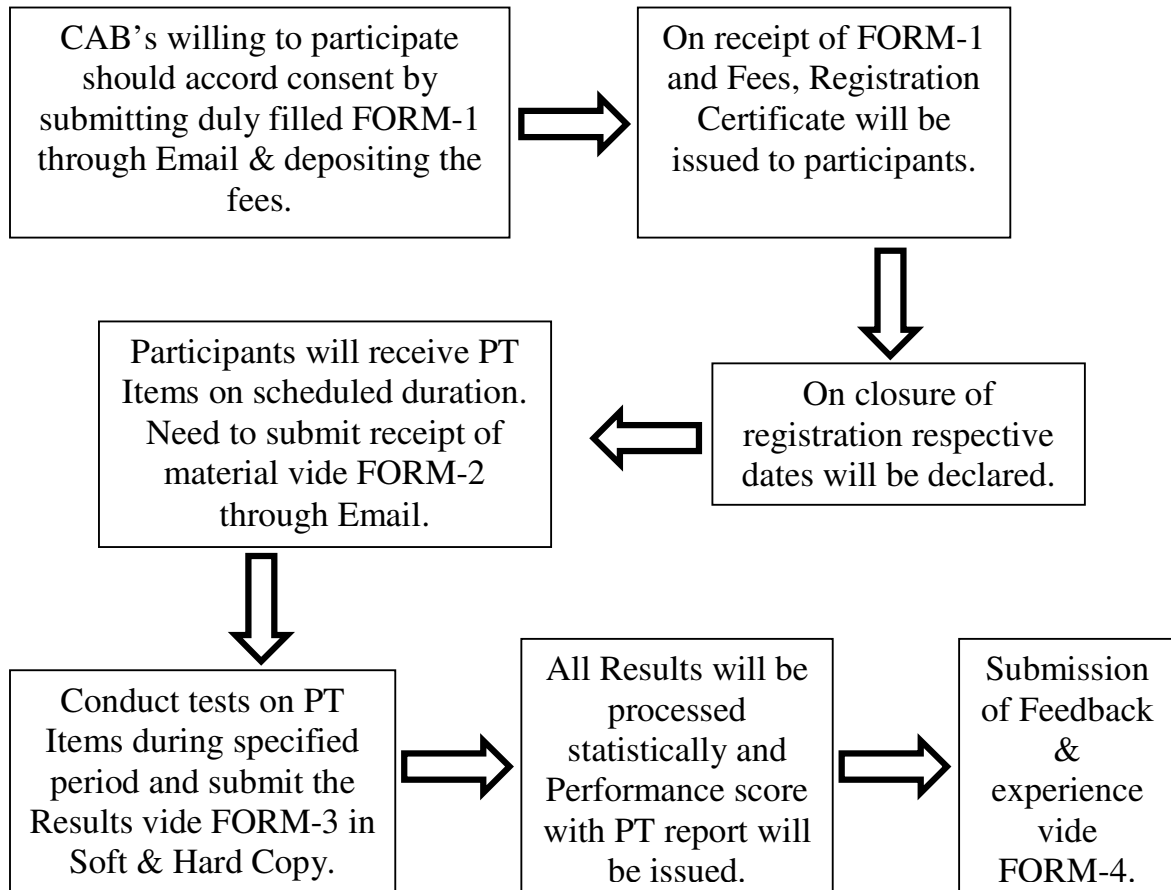
Proficiency Testing (PT) is defined as the evaluation of participants' performance against pre-established criteria by means of inter-laboratory comparisons. Proficiency tests are necessary part of quality control activities. It intends essentially to enable the participant to detect unsuspected errors in their analytical systems so as to produce quality results.

The laboratories having NABL accreditation as per ISO-17025:2005 need successful participation in proficiency testing schemes in all parameters as per their four year plan. While those who are applying for accreditation need successful participation in at least one PT programme prior to gaining accreditation in each discipline applied. This PT scheme facilitates by providing an opportunity to fulfil the mandate.

3. INFORMATION ON PT ROUNDS:

The procedure of Proficiency Testing rounds involves preparation & dispatch of homogenised test samples for respective test parameters and safe delivery of PT samples to all participants.

Participants will conduct the test during a pre-fixed time slot and report the results within a certain time frame to PT coordinator. The processed results will be made available to participants in the form of performance score that will allow them to compare their performance with the pre-fixed criteria within their group of participants. The process flowchart of the round is mentioned below:



4. TEST PARAMETERS:

The scheme covers testing of PT samples for the test parameters mentioned for respective PT rounds. Test parameters for various products are grouped for each PT round as per their compatibility. Participants are required to conduct tests for all parameters of any particular group that they select to participate. Necessary instructions for testing procedure and handling of samples will be issued prior to test duration.

5. REGISTRATION:

Registrations will remain open for all PT rounds throughout the programme duration. For any particular PT round, registrations will be accepted till one month before the scheduled time of sample dispatch. While subsequent requests of participation in same round, after the closure of registration, will be accepted for registration for next PT round of same parameters. The details of such successive PT rounds will be announced simultaneously with the declaration of closure of concurrent PT round.



The laboratories willing to participate in any of the PT round may submit their request vide duly filled FORM-1 along with respective fees including GST. On receipt of Form-1 & fees, a certificate of registration will be issued.

6. TIME SCHEDULE:

Annual PT programme for the year 2018 is attached herewith. Tentative period of sample dispatch, testing and release of PT reports are indicated in front of respective PT rounds. These schedules may be altered as per the requirements of PT plan. Exact dates of dispatch of material, testing duration and release of PT reports will be declared on closure of registration for a particular PT round and will be intimated to all respective participants.

7. PT MATERIAL-DISTRIBUTION:

The PT items will be packed appropriately and marked with a unique identity to ensure the integrity of item during the transit & test. The distribution of PT items will be made through a carrier capable of timely & safe delivery to participants' address. Replacement or resend of the samples would be provided free of cost in case of damage or loss of PT item in transit, is reported with substantial evidence by the participants.

On receiving of samples, participants shall acknowledge the receipt by submitting the FORM-2 to PT coordinator through Email.

8. PT MATERIAL-TESTING AND REPORTING OF RESULTS:

Necessary instructions for testing and data reporting sheets will be provided along with samples. Participants are required to conduct the test as per specified test methods and during the specified time interval only. Results shall be reported in desired accuracy through result reporting sheets vide FORM-3.

The scanned image of FORM-3 shall be sent to the PT coordinator through email for immediate communication latest by the last date of reporting, followed by the hard copy of the same that shall be reached to PT coordinator through courier or speed post in a sealed envelope of Laboratory.

9. PERFORMANCE ANALYSIS:

Test results as received from participants will be quantitatively evaluated in accordance to provisions of ISO 17043:2010 and ISO 13528:2015 for comparative performance assessment and will be expressed in the form of z-score or z prime-



score. A summary sheet containing numeric value of respective performance score will be issued to participants along with PT report.

10. PT REPORT AND CONFIDENTIALITY:

The Proficiency Testing Report will be prepared on the basis of collected data, reported results and other information gathered from participants. The Report will be issued to participants only, however it may be issued to NABL or any regulatory body if required. The identity of participants will not be disclosed in PT report and only a numeric codal identity will be used to address the participant.

11. APPEALS & COMPLAINTS:

The participating laboratories may submit appeals or grievances, if any, to PT coordinator within one month after the issue of PT report.

12. COMMUNICATION:

The complete programme is being managed by Nirbhay Mathur (PT Coordinator). The participants may interact with PT coordinator as per the details given below. Electronic (email) and documented communications between official addresses will be considered valid.

PT Division reserves the right to carry out alterations/corrections/revisions and to cancel the whole or part of any PT round at any time without assigning any reason whatsoever.

Date: 27th Dec. 2017
Revised on 26.07.18

Sd.
Nirbhay Mathur
(PT Coordinator)

Contact Details:

Nirbhay Mathur,
PT Coordinator, PT Division,
Landmark Material Testing And Research Laboratory Pvt. Ltd.
G-200, RIICO Industrial Area, Mansarovar, Jaipur-302020(Rajasthan)
Phone No: +91-141-4022067,2401478, +91-9829056760 E-mail: lrtpjpr@gmail.com



---PT CALENDAR 2018---

Product & Parameters	Method	PT Round ID	Fees in INR†	Sample Dispatch, Testing Duration & Issue of Report	Last date to accept registration
GROUP-I : (MECHANICAL FIELD)					
1. NATURAL ROCK					
(i)	Unconfined compressive Strength Test*	IS: 9143-1979 RA 2011	LRL/PT/NARC/01/18	12000.00	Aug-2018 to Oct. 2018
(ii)	Relative Density	IS: 13030-1991 RA 2011			
(iii)	Water Content	IS: 13030-1991 RA 2011			
2. NATURAL STONE					
(i)	Compressive Strength	IS: 1121 (Part-1)-2013	LRL/PT/NAST/02/18	15000.00	Aug-2018 to Oct. 2018
(ii)	True Specific Gravity	IS: 1122-1974 RA 2013			
(iii)	Apparent Specific Gravity	IS: 1124-1974 RA 2013			
(iv)	Apparent Porosity	IS: 1124-1974 RA 2013			
(v)	Water Absorption	IS: 1124-1974 RA 2013			
3. BENTONITE SOIL					
(i)	Marsh Cone Viscosity	ASTM-D 6910-04	LRL/PT/BENS/03/18	12000.00	Sept-2018 to Oct.-2018
(ii)	Sand Content	IS: 6186 1986 RA 2010			
(iii)	Swelling Power	IS: 6186 1986 RA 2010			
(iv)	Specific Gravity	IS: 2720 (Pt-III) Sec.1/2-1980, RA 2011			
4. CEMENT					
(i)	Compressive Strength	IS: 4031 (Pt-6) 1988 RA 2014	LRL/PT/CEMT/04/18	6000.00	June-2018 to Aug.-2018
(ii)	Consistency	IS: 4031 (Pt-4)-1988 RA 2014			
(iii)	Setting Time Initial & Final	IS: 4031 (Part-5) 1988 RA 2014			
(iv)	Density	IS: 4031 (Pt-11) 1988 RA 2014			
5. BITUMEN EMULSION					
(i)	Residue on 600 micron	IS : 8887 – 2004 RA 2009	LRL/PT/BIEM/05/18	15000.00	Sept.-2018 to Oct. 2018
(ii)	Viscosity by Saybolt furol viscometer	IS : 3117 – 2004 RA 2009			
(iii)	Water content	IS:1211-1978 RA 2009			
(iv)	Tests on Residue by i) Residue Evaporation ii) Penetration iii) Ductility iv) Solubility in Trichloroethylene	i) IS : 8887-2004 RA 2009 Annexure – J ii) IS:1203-1978 RA2009 iii) IS :1208-1978 RA2009 iv) IS:1216-1978 RA2009			



Product & Parameters		Method	PT Round ID	Fees in INR†	Sample Dispatch, Testing Duration & Issue of Report	Last date to accept registration
6.SOIL						
(i)	Dry Sieve Analysis	IS: 2720 (Pt-IV)-1985RA 2010	<u>LRL/PT/SOIL/06/18</u>	10000.00	June-2018 to July-2018	Closed
(ii)	Wet Sieve Analysis	IS: 2720 (Pt-IV)-1985, RA 2010				
(iii)	Hydrometer Analysis	IS: 2720 (Pt-IV)-1985, RA 2010 (Clause 5.2)				
7. TILES (CONCRETE)						
(i)	Abrasion Resistance Test*	IS: 1237-2012	LRL/PT/TILE/07/18	18000.00	Sept-2018 to Nov-2018	25.09.18
(ii)	Straightness*	IS: 1237-2012				
(iii)	Flatness*	IS: 1237-2012				
(iv)	Water Absorption*	IS: 1237-2012				
(v)	Perpendicularity*	IS: 1237-2012				
8. AAC BLOCK						
(i)	Compressive Strength	IS: 6441 (Part-5)-1972 RA 2012	LRL/PT/AACB/08/18	16000.00	Sept-2018 to Oct-2018	12.09.18
(ii)	Moisture Content	IS: 6441 (Part-I)-1972 RA 2012				
(iii)	Bulk Density	IS: 6441 (Part-I)-1972 RA 2012				
9. BITUMINOUS MIX/CORE						
(i)	Bitumen Content	IRC SP -11 -1984	LRL/PT/BTMX/09/18	8000.00	Oct-2018 to Nov-2018	10.10.18
(ii)	Maximum Theoretical Specific Gravity (Gmm)*	ASTM D-2041-00				
10. FLY ASH						
(i)	Soundness (Autoclave)	IS: 1727-1967RA 2013	LRL/PT/FLAS/10/18	8000.00	Sept-2018 to Nov-2018	15.09.18
(ii)	Fineness (By Blain Air)	IS: 1727-1967RA 2013				
(iii)	Soundness (Le-Chatelier method)	IS:1727-1967RA 2013				
(iv)	Residue on 45 micron	IS:1727-1967RA 2013				
11. SOIL						
(i)	Liquid Limit	IS: 2720 (Part 5)-1985 RA.2010	<u>LRL/PT/SOIL/11/18</u>	10000.00	July-2018 to Sept-2018	Closed
(ii)	Plastic Limit	IS-2720 (Part VI)-1972 RA 2011				
(iii)	Shrinkage Limit	IS-2720 (Part VI)-1972 RA 2011				



Product & Parameters		Method	PT Round ID	Fees in INR†	Sample Dispatch, Testing Duration & Issue of Report	Last date to accept registration
12. FINE AGGREGATE						
(i)	Sieve Analysis (Gradation)	IS: 2386 (Part-1)-1963 RA 2016 IS: 383-2016	<u>LRL/PT/FIAG/12/18</u>	16000.00	July-2018 to Aug-2018	Closed
(ii)	Water Absorption	IS: 2386 (Part-III)-1963 RA 2016				
(iii)	Materials finer than 75 μ	IS: 2386 (Part-I)-1963 RA 2016				
(iv)	Bulk Density	IS: 2386 (Part-III)-1963 RA 2016				
(v)	Specific gravity	IS: 2386 (Part-III)-1963 RA 2016				
13. WOOD/TIMBER						
(i)	Moisture Content*	IS:1708(Part-I- 1986 RA 2010	LRL/PT/WOOD/13/18	10000.00	Oct.2018 to Nov.2018	31.10.18
(ii)	Specific Gravity*	IS:1708(Part-II)-1986 RA2010				
14. COARSE AGGREGATE						
(i)	Sieve Analysis (Gradation)	IS:2386(Part-1)-1963RA2016, IS: 383-2016	<u>LRL/PT/COAG/14/18</u>	10000.00	July-2018 to Sept-2018	Closed
(ii)	Impact Value	IS:2386(Part-IV)-1963 RA 2016				
(iii)	Los Angles Abrasion Value	IS: 2386(Part-IV)-1963 RA 2016				
(iv)	Water Absorption	IS: 2386 (Part-III)-1963 RA 2016				
(v)	Crushing Value	IS: 2386(Part-IV)-1963 RA 2016				
15. BRICKS						
(i)	Compressive Strength	IS: 3495 (Pt -I)-1992 RA 2011	LRL/PT/BRIC/15/18	18000.00	Aug-2018 to Oct-2018	18.08.18
(ii)	Water Absorption	IS:3495 (Pt -II)-1992 RA2011				
16. PAVER BLOCK						
(i)	Compressive Strength	IS : 15658 : 2006 RA 2011 Annex-D	LRL/PT/PVBL/16/18	18000.00	Aug-2018 to Oct-2018	22.08.18
(ii)	Water Absorption	IS : 15658 : 2006 RA 2011 Annex-C				
(iii)	Abrasion Resistance*	IS :15658:2006 RA 2011 Annex-E				
17. GI PIPE						
(i)	Dimensions* Outside Diameter, Thickness	IS: 1239 (Part-1) -2004 RA 2010	LRL/PT/GIPP/17/18	10000.00	Sept-2018 to Nov-2018	19.09.18
(ii)	Nominal Mass*	IS: 1239 (Part-1) -2004 RA 2010				



Product & Parameters		Method	PT Round ID	Fees in INR†	Sample Dispatch, Testing Duration & Issue of Report	Last date to accept registration
18. BITUMEN:						
(i)	Specific Gravity	IS: 1202- 1978 RA 2009	LRL/PT/BITU/18/18	15000.00	Sept.-2018 to Nov.-2018	10.09.18
(ii)	Softening Point	IS: 1205-1978 RA 2009				
(iii)	Penetration Test	IS: 1203-1978 RA 2009				
(iv)	Ductility Test on residue of bitumen	IS: 1208-1978 RA 2009				
19. PLY WOOD						
(i)	Density*	IS: 303–1989 RA 2013 IS:1734(Part-I)–1983RA 2013	LRL/PT/PLWD/19/18	10000.00	Oct-2018 to Nov-2018	22.10.18
(ii)	Moisture Content*	IS: 303–1989 RA 2013 IS:1734(Part-I)–1983RA 2013				
20.SOIL						
(i)	Specific Gravity	IS: 2720 (Pt-III) Sec.1/2 – 1980, RA 2011	LRL/PT/SOIL/20/18	15000.00	Sept-2018 to Oct-2018	06.09.18
(ii)	Free Swell Index	IS 2720 (Part XL)-1977 RA 2011				
(iii)	Tri-axial without pore water pressure*	IS 2720 (Part-11) 1993- RA 2011				
(iv)	Unconfined Compressive Strength	IS 2720 (Part-10) 1991 RA 2010				
21. CEMENT						
(i)	Fineness Test (Dry)	IS: 4031(Part-1) 1996 RA 2011	LRL/PT/CEMT/21/18	6000.00	Sep-2018 to Nov-2018	15.10.18
(ii)	Fineness (By Blain Air)	IS: 4031 (Part 2): 1999 RA 2013				
(iii)	Soundness (Autoclave)	IS: 4031 (Part 3) : 1988 RA 2014				
(iv)	Soundness (Le-Chatelier method)	IS: 4031(Pt-3) 1988 RA 2014				
22. PVC PIPES						
(i)	Measurement of Dimensions* Outside Diameter at any Point Wall Thickness Mean Outside Diameter	IS: 12235 (Part-1) -2004 RA 2014	LRL/PT/PVCP/22/18	10000.00	Sep-2018 to Nov-2018	28.09.18
(ii)	Density*	IS: 13360 (Part-3, Sec-1) -1995 RA 2008 (Method-B) IS: 12235 (Part-14) - 2004 RA 2014				



Product & Parameters	Method	PT Round ID	Fees in INR†	Sample Dispatch, Testing Duration & Issue of Report	Last date to accept registration	
23. CC CUBES						
(i)	Compressive Strength	IS: 516-1959 RA 2013	LRL/PT/CUBE/23/18	15000.00	Nov-2018 to Jan-2019	31.10.18
24. BITUMINOUS MIX/CORE						
(i)	Marshall Stability*	ASTM D-6927-2006 & MS-2	LRL/PT/BTMX/24/18	12000.00	Nov-2018 to Jan-2019	03.11.18
(ii)	Density*	ASTM D-2726-00				
25.COARSE AGGREGATE						
(i)	10% Fine Value	IS: 2386 (Part-IV)-1963 RA 2016	LRL/PT/COAG/25/18	10000.00	Nov-2018 to Jan-2019	15.11.18
(ii)	Elongation Index	IS: 2386 (Part-I)-1963 RA 2016				
(iii)	Flakiness Index	IS: 2386 (Part-I)-1963 RA. 2016				
(iv)	Specific gravity	IS: 2386 (Part-III)-1963 RA 2016				
(v)	Bulk Density	IS: 2386 (Part-III)-1963 RA 2016				
26. BITUMEN						
(i)	Flash Point	IS: 1209-1978 RA 2009	LRL/PT/BITU/26/18	10000.00	Nov-2018 to Jan-2019	02.11.18
(ii)	Solubility in Trichloroethylene	IS: 1216 -1978 RA 2009				
(iii)	Elastic Recovery on PMB	IS: 15462 – 2004 RA 2009				
27. SOIL						
(i)	Heavy compaction	IS: 2720 (Part VIII)-1983 RA 2010	LRL/PT/SOIL/27/18	12000.00	Nov-2018 to Jan-2019	29.10.18
(ii)	Light Compaction	IS: 2720 (Part VII)-1980 RA 2011				
(iii)	CBR	IS:2720(Part-16) 1987 RA 2011				
(iv)	Direct Shear test	IS 2720 (Part-13) 1986 RA 2011				



Product & Parameters	Method	PT Round ID	Fees in INR †	Sample Dispatch, Testing Duration & Issue of Report	Last date to accept registration
GROUP-II (NON DESTRUCTIVE TESTS)					
28. NDT (CONCRETE) #					
(i)	UPV	IS:13311(Pt-I) : 1992	LRL/PT/NDTC/28/18	18000.00	Sep-2018 to Oct-2018
(ii)	Rebound hammer	IS:13311(Pt-II) : 1992			
(iii)	Half Cell Potential*	ASTM C876-91			
					25.09.18

*Parameters are not included in present scope of NABL.

PT will be conducted at PT provider's premises in Jaipur on first week of Oct. Exact date will be declared on or before 15th Sept. 2018.

† (1) Fees mentioned here are excluding GST, please deduct discount amount from fees (if any) and add GST on balace amount to calculate total fees payable.

† (2) Participants may avail a loyalty discount of 5% on respective fees while applying for first time in any PT round and 10% on all subsequent applications from the above list.

--- END ---