

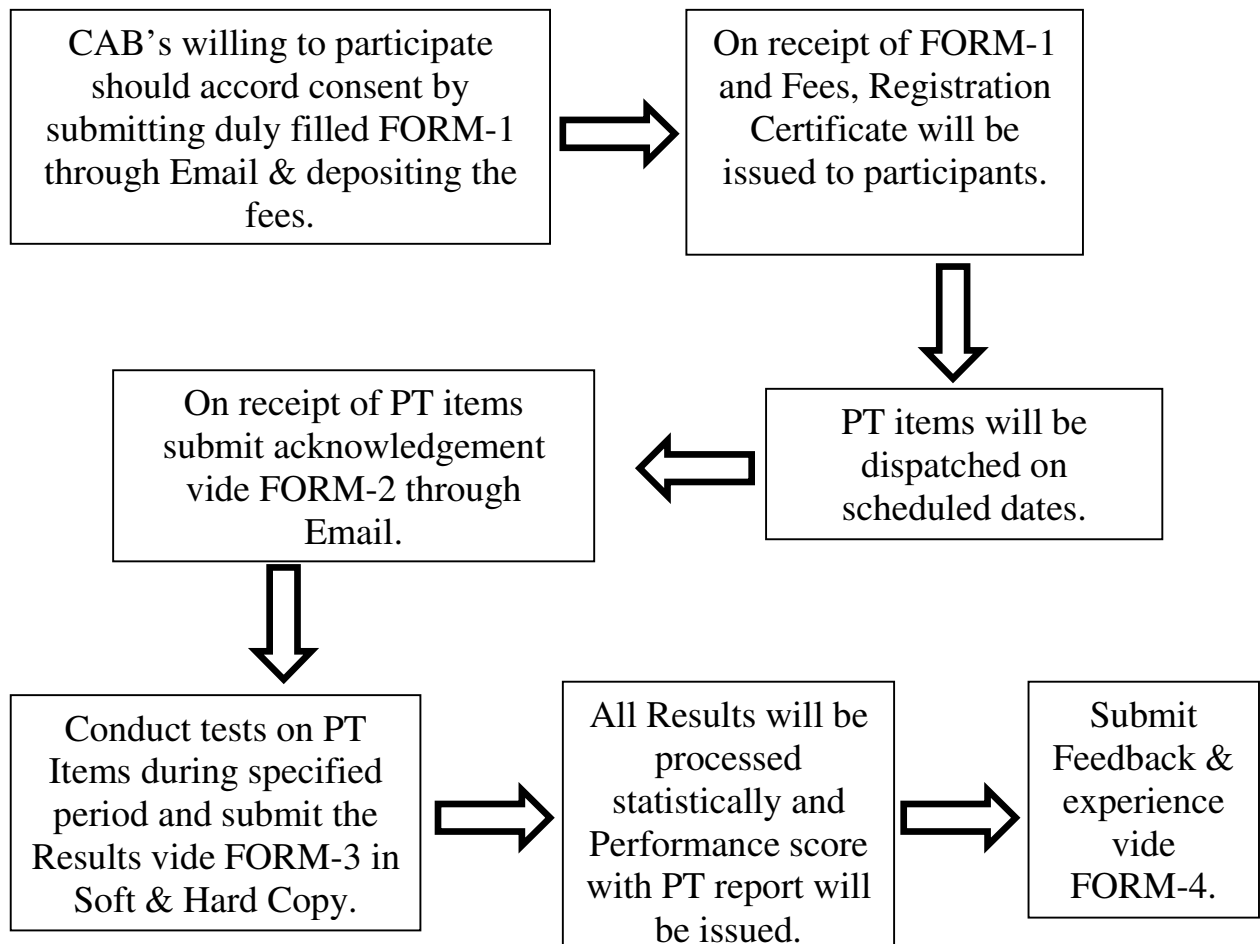
GENERAL PROTOCOL FOR PROFICIENCY TESTING SCHEMES - 2019

1. INTRODUCTION:

LANDMARK Material Testing and Research Laboratory Pvt. Ltd (LRL) is a renowned organisation providing services in the field of mechanical testing of various building materials and soil, technical trainings, research & development. The PT DIVISION of LRL is an Accredited Proficiency Testing Service provider as per ISO 17043:2010 in many parameters & products and continually enhancing its existing scope.

2. INFORMATION ON PT ROUNDS:

The procedure of Proficiency Testing rounds involves preparation & dispatch of homogenised test samples to participants. Participants need to conduct the test during a pre-fixed time slot and report the results within a certain time frame to PT provider. The processed results are made available to participants in the form of performance score. The process flowchart of the round is mentioned below:





3. REGISTRATION AND MATERIAL DISPATCH:

Registrations will remain open for all PT rounds throughout the programme duration till PT material dispatch date. In general PT Material will be dispatched as per the scheduled date, but in some cases due to less participation it may be postponed and thereby the PT report issue date also, as the case may be.

The laboratories willing to participate in any of the PT round may submit their request vide duly filled FORM-1 along with respective fees and GST. On receipt of Form-1 & fees, a certificate of registration will be issued.

4. PT REPORT AND CONFIDENTIALITY:

The identity of participants will not be disclosed in PT report and only a numeric codal identity will be used to address the participant. PT Report and performance scores will be issued to participants only, however these may be issued to NABL or any regulatory body if required.

5. APPEALS & COMPLAINTS:

The participating laboratories may submit appeals or grievances, if any, to PT coordinator within one month after the issue of PT report.

6. COMMUNICATION:

The complete programme is being managed by Nirbhay Mathur (PT Coordinator). The participants may interact with PT coordinator as per the details given below. Electronic (email) and documented communications between official addresses will only be considered valid.

PT Division reserves the right to carry out alterations/corrections/revisions and to cancel the whole or part of any PT round at any time without assigning any reason whatsoever.

Sd.

Nirbhay Mathur
(PT Coordinator)

Date:01.11.2018
Revised on 30.09.2019

Contact Details:

Nirbhay Mathur,
PT Coordinator, PT Division,
Landmark Material Testing And Research Laboratory Pvt. Ltd.
G-200, RIICO Industrial Area, Mansarovar, Jaipur-302020(Rajasthan)
Phone No: +91-141-4022067, +91-9829056760 E-mail: LRLPTJPR@gmail.com

---PT CALENDAR 2019---

- | | | |
|--|-----------------|-----------------------------|
| ❖ (A) Soil & Rock | ❖ (B) Aggregate | ❖ (C) Concrete, Paver block |
| ❖ (D) Cement | ❖ (E) Bitumen | ❖ (F) Textile |
| ❖ (G) Others- Bricks,
Tiles, Pipe, Wood etc | ❖ (H) NDT | ❖ (I) Metals and its Alloy |

Product & Parameters	Method	PT Round ID	Fees		PT Material Dispatch Date	PT Report Issue Date	
			INR	USD#			
GROUP-I (MECHANICAL): (A) SOIL & ROCK							
1. NATURAL STONE							
(i)	Compressive Strength	IS: 1121 (Part-1)-2013/Any equivalent Method	LRL/PT/NAST/A05/19	15000.00	425	30.10.2019	30.11.2019
(ii)	True Specific Gravity	IS: 1122-1974 /Any equivalent Method					
(iii)	Apparent Specific Gravity	IS: 1124-1974/Any equivalent Method					
(iv)	Apparent Porosity	IS: 1124-1974 /Any equivalent Method					
(v)	Water Absorption	IS: 1124-1974 /Any equivalent Method					
(vi)	Scratch Hardness (Mho's Scale)	IS 13630 (Part 13) : 2006					
2. BENTONITE							
(i)	Sand Content	IS: 6186 1986 /Any equivalent Method	LRL/PT/BENS/A07/19	12000.00	340	30.10.2019	30.11.2019
(ii)	Swelling Power	IS: 6186 1986 /Any equivalent Method					
(iii)	Moisture Content	IS: 6186 1986 /Any equivalent Method					
(iv)	Fineness	IS: 6186 1986 /Any equivalent Method					
3. SOIL							
(i)	Dry Sieve Analysis	IS: 2720 (Pt-IV)-1985/Any equivalent Method	LRL/PT/SOIL/A09/19	12000.00	340	30.09.2019	30.10.19
(ii)	Wet Sieve Analysis	IS: 2720 (Pt-IV)-1985, /Any equivalent Method					
(iii)	Hydrometer Analysis	IS: 2720 (Pt-IV)-1985, (Clause 5.2)					
(iv)	Free Swell Index	IS 2720 (Part XL)-1977/Any equivalent Method					
4. SOIL							
(i)	Specific Gravity	IS: 2720 (Pt-III) Sec.1/2 – 1980, /Any equivalent Method	LRL/PT/SOIL/A10/19	14000.00	400	30.11.2019	15.12.2019
(ii)	Direct Shear test	IS 2720 (Part-13) 1986 RA 2011/Any equivalent Method					

Product & Parameters		Method	PT Round ID	Fees		PT Material Dispatch Date	PT Report Issue Date
				INR	USD#		
(iii)	Tri-axial without pore water pressure	IS 2720 (Part-11) 1993/Any equivalent Method					
(iv)	Unconfined Compressive Strength	IS 2720 (Part-10) 1991 /Any equivalent Method					
5. SOIL							
(i)	Heavy compaction	IS: 2720 (Part VIII)-1983 RA 2010/Any equivalent Method	LRL/PT/SOIL/A11/19	14000.00	400	30.10.2019	30.11.2019
(ii)	Light Compaction	IS: 2720 (Part VII)-1980 RA 2011/Any equivalent Method					
(iii)	CBR	IS:2720(Part-16) 1987 RA 2011/Any equivalent Method					
(iv)	Specific Gravity	IS: 2720 (Pt-III) Sec.1/2 – 1980, /Any equivalent Method					
6. SOIL							
(i)	Liquid Limit	IS: 2720 (Part 5)-1985 /Any equivalent Method	LRL/PT/SOIL/A12/19	12000.00	340	30.10.2019	15.12.2019
(ii)	Plastic Limit	IS-2720 (Part 5)-1985/Any equivalent Method					
(iii)	Shrinkage Limit	IS-2720 (Part VI)-1972 /Any equivalent Method					
(iv)	Specific Gravity	IS: 2720 (Pt-III) Sec.1/2 – 1980, /Any equivalent Method					
7. NATURAL ROCK							
(i)	Unconfined compressive Strength	IS: 9143-1979 /Any equivalent Method	LRL/PT/NARC/A13/19	18000.00	500	30.12.2019	30.01.2020
(ii)	Dry Relative Density	IS: 13030-1991 /Any equivalent Method					
(iii)	Water Content	IS: 13030-1991 /Any equivalent Method					
(iv)	Point Load Index	IS: 8764:1998/Any equivalent Method					
GROUP-I (MECHANICAL): (B) AGGREGATE							
1. COARSE AGGREGATE							
(i)	Los Angles Abrasion Value	IS: 2386(Part-IV)-1963/Any equivalent Method	LRL/PT/COAG/B08/19	12000.00	340	15.12.2019	30.01.2020
(ii)	Crushing Value	IS: 2386(Part-IV)-1963 /Any equivalent Method					

Product & Parameters		Method	PT Round ID	Fees		PT Material Dispatch Date	PT Report Issue Date
				INR	USD#		
(iii)	10% Fine Value	IS: 2386 (Part-IV)-1963 /Any equivalent Method					
(iv)	Bulk Density	IS: 2386 (Part-III)-1963 RA 2016/Any equivalent Method					
(v)	Impact Value	IS:2386(Part-IV)-1963 /Any equivalent Method					
(vi)	Soundness	IS:2386(Part-V)-1963/Any equivalent Method					

2. COARSE AGGREGATE

(i)	Sieve Analysis (Gradation)	IS: 2386 (Part-I)-1963/Any equivalent Method	LRL/PT/COAG/B09/19	10000.00	285	30.11.2019	30.12.2019
(ii)	Water Absorption	IS: 2386 (Part-III)-1963 /Any equivalent Method					
(iii)	Specific Gravity	IS: 2386 (Part-III)-1963/Any equivalent Method					
(iv)	Elongation Index	IS: 2386 (Part-I)-1963 /Any equivalent Method					
(v)	Flakiness Index	IS: 2386 (Part-I)-1963 /Any equivalent Method					

3. FINE AGGREGATE

(i)	Sieve Analysis (Gradation)	IS: 2386 (Part-I)-1963/Any equivalent Method	LRL/PT/FIAG/B07/19	12000.00	340	30.11.2019	30.12.2019
(ii)	Bulk Density (Compacted)	IS: 2386 (Part-III)-1963 /Any equivalent Method					
(iii)	Materials finer than 75µ	IS: 2386 (Part-I)-1963 /Any equivalent Method					
(iv)	Sand Equivalent Value	IS 2720 Part (XXXVII):1976/Any equivalent Method					
(v)	Specific gravity	IS: 2386 (Part-III)-1963 /Any equivalent Method					
(vi)	Soundness	IS 2386 (Part V):1963/Any equivalent Method					
(vii)	Water Absorption	IS: 2386 (Part-III)-1963 /Any equivalent Method					



Product & Parameters	Method	PT Round ID	Fees		PT Material Dispatch Date	PT Report Issue Date	
			INR	USD#			
GROUP-I (MECHANICAL): (C) CONCRETE							
1. CEMENT CONCRETE							
(i)	Workability by Slump Test	IS 1199:1959/Any equivalent Method	LRL/PT/WOSL/C02/19	7000.00	200	30.11.2019	30.12.2019
2. HOLLOW & SOLID CONCRETE BLOCKS							
(i)	Compressive Strength	IS:2185 (Part I) Annex D:2005/Any equivalent Method	LRL/PT/COBL/C04/19	25000.00	700	30.10.2019	30.11.2019
(ii)	Block Density	IS:2185 (Part I) Annex C:2005/Any equivalent Method					
(iii)	Water Absorption	IS:2185 (Part I) Annex E:2005/Any equivalent Method					
3. AAC BLOCK							
(i)	Compressive Strength	IS: 6441 (Part-5)-1972 RA 2012/Any equivalent Method	LRL/PT/AACB/C05/19	18000.00	500	30.10.2019	30.12.2019
(ii)	Moisture Content	IS: 6441 (Part-I)-1972 RA 2012/Any equivalent Method					
(iii)	Bulk Density	IS: 6441 (Part-I)-1972 RA 2012/Any equivalent Method					
4. PAVER BLOCKS							
(i)	Compressive Strength	IS : 15658 : 2006 RA 2011 Annex-D/Any equivalent Method	LRL/PT/PVBL/C09/19	18000.00	500	31.12.2019	30.01.2020
(ii)	Water Absorption	IS : 15658 : 2006 RA 2011 Annex-C/Any equivalent Method					
(iii)	Abrasion Resistance	IS :15658:2006 RA 2011 Annex-E/Any equivalent Method					
5. CONCRETE TILES							
(i)	Abrasion Resistance Test	IS: 1237-2012 /Any equivalent Method	LRL/PT/TILE/C07/19	18000.00	500	30.10.2019	30.11.2019
(ii)	Straightness	IS: 1237-2012 /Any equivalent Method					
(iii)	Flatness	IS: 1237-2012 /Any equivalent Method					
(iv)	Water Absorption	IS: 1237-2012 /Any equivalent Method					
(v)	Perpendicularity	IS: 1237-2012 /Any equivalent Method					



Product & Parameters	Method	PT Round ID	Fees		PT Material Dispatch Date	PT Report Issue Date	
			INR	USD#			
6. CONCRETE CUBE / CORE							
(i)	Compressive Strength	IS: 516-1959 / 516-2018(P-5) /Any equivalent Method	LRL/PT/CUBE / C08/19	18000.00	500	15.11.2019	30.12.2019
GROUP-I (MECHANICAL): (D) CEMENT							
1. CEMENT							
(i)	Fineness Test (Dry)	IS: 4031(Part-1) 1996 /Any equivalent Method	LRL/PT/CEMT/ D02/19	8000.00	225	15.10.2019	15.11.2019
(ii)	Fineness (By Blain Air)	IS: 4031 (Part 2): 1999 /Any equivalent Method					
(iii)	Soundness (Autoclave)	IS: 4031 (Part 3) : 1988 /Any equivalent Method					
(iv)	Soundness (Le-Chatelier method)	IS: 4031(Pt-3) 1988 /Any equivalent Method					
2. FLY ASH							
(i)	Soundness (Autoclave)	IS: 1727-1967RA 2013/Any equivalent Method	LRL/PT/FLAS/ D03/19	8000.00	225	30.10.2019	30.11.2019
(ii)	Fineness (By Blain Air)	IS: 1727-1967RA 2013/Any equivalent Method					
(iii)	Soundness (Le-Chatelier method)	IS:1727-1967RA 2013/Any equivalent Method					
(iv)	Residue on 45 micron	IS:1727-1967RA 2013/Any equivalent Method					
3. CEMENT							
(i)	Compressive Strength	IS: 4031 (Pt-6) 1988 /Any equivalent Method	LRL/PT/CEMT/ D04/19	8000.00	225	15.11.2019	15.12.2019
(ii)	Consistency	IS: 4031 (Pt-4)-1988 /Any equivalent Method					
(iii)	Setting Time Initial & Final	IS: 4031 (Part-5) 1988 /Any equivalent Method					
(iv)	Density	IS: 4031 (Pt-11) 1988 /Any equivalent Method					

Product & Parameters	Method	PT Round ID	Fees		PT Material Dispatch Date	PT Report Issue Date	
			INR	USD#			
GROUP-I (MECHANICAL) : (E) BITUMEN							
1. BITUMEN							
(i)	Specific Gravity	IS: 1202- 1978/Any equivalent Method	LRL/PT/BITU/ E01/19	14000.00	400	30.12.2019	30.01.2020
(ii)	Softening Point	IS: 1205-1978/Any equivalent Method					
(iii)	Penetration Test	IS: 1203-1978 /Any equivalent Method					
(iv)	Ductility Test	IS: 1208-1978 /Any equivalent Method					
(v)	Flash Point	IS: 1209-1978/Any equivalent Method					
(vi)	Solubility in Trichloroethylene	IS: 1216 -1978 /Any equivalent Method					
(vii)	Elastic Recovery on PMB	IS: 15462 – 2004 /Any equivalent Method					
(viii)	Absolute Viscosity at 60°C	ASTM D 4402/IS 1206 (part-2)/Any Equivalent Method					
(ix)	Kinematic Viscosity at 135°C	ASTM D 4402/ IS 1206 (part-3)/Any equivalent Method					
2. BITUMEN EMULSION							
(i)	Residue on 600 micron	IS : 8887(Annex B) – 2004 /Any equivalent Method	LRL/PT/BIEM/ E02/19	16000.00	455	30.10.2019	30.11.2019
(ii)	Viscosity by Saybolt furol viscometer at 25°C	IS : 3117 – 2004 /Any equivalent Method					
(iii)	Water content	IS:1211-1978 /Any equivalent Method					
(iv)	Tests on Residue i)Residue Evaporation ii) Penetration iii) Ductility iv)Solubility in Trichloroethylene	i) IS : 8887-2004 Annexure – J ii) IS:1203-1978 iii)IS:1208-1978 iv) IS:1216-1978 /Any equivalent Method					
3. BITUMINOUS MIX/CORE							
(i)	Bitumen Content	IRC SP -112 - 2017/Any equivalent Method	LRL/PT/BTMX/ E03/19	16000.00	455	15.10.2019	15.12.2019
(ii)	Maximum Theoretical Specific Gravity (Gmm)	ASTM D-2041-00/Any equivalent Method					
(iii)	Marshall Stability	ASTM D-6927-2015/Any equivalent Method					

Product & Parameters		Method	PT Round ID	Fees		PT Material Dispatch Date	PT Report Issue Date
				INR	USD#		
(iv)	Density	ASTM D-2726-2000/Any equivalent Method					
(v)	Tensile Strength Ratio	IRC SP 79 (Annex-E) : 2008/Any equivalent Method					
GROUP-I (MECHANICAL) : (G) OTHERS							
1. BUILDING BRICKS							
(i)	Compressive Strength	IS: 3495 (Pt -I)-1992 /Any equivalent Method	LRL/PT/BRIC/ G07/19	20000.00	570	30.12.2019	30.01.2020
(ii)	Water Absorption	IS:3495 (Pt -II)-1992 /Any equivalent Method					
2. CERAMIC / VIRIFIED TILES							
(i)	Rectangularity	IS 13630 (Part 1) 2006/Any equivalent Method	LRL/PT/TILE/ G02/19	15000.00	425	30.10.2019	30.11.2019
(ii)	Water Absorption	IS 13630 (Part 2) 2006/Any equivalent Method					
(iii)	Scratch Hardness of Surface (Moh's Scale)	IS 13630 (Part 13) 2006/Any equivalent Method					
(iv)	Straightness	IS 13630 (Part 1) 2006/Any equivalent Method					
(v)	Modulus of Rupture	IS 13630 (Part 6) 2006/Any equivalent Method					
(vi)	Breaking Strength	IS 13630 (Part 6) 2006/Any equivalent Method					
3. WOOD/TIMBER							
(i)	Moisture Content	IS:1708(Part-I- 1986 RA 2010/Any equivalent Method	LRL/PT/WOOD/ G03/19	9000.00	255	30.10.2019	30.11.2019
(ii)	Specific Gravity	IS:1708(Part-II)-1986 RA2010/Any equivalent Method					
4. G.I.PIPE							
(i)	Dimensions Outside Diameter, Thickness	IS: 1239 (Part-1) -2004 RA 2010/Any equivalent Method	LRL/PT/GIPP/ G04/19	9000.00	255	30.10.2019	30.11.2019
(ii)	Nominal Mass	IS: 1239 (Part-1) - 2004 RA 2010/Any equivalent Method					

Product & Parameters		Method	PT Round ID	Fees		PT Material Dispatch Date	PT Report Issue Date
				INR	USD#		
(iii)	Thickness	IS 1239 (Part I) : 2004/Any equivalent Method					
5. PLY WOOD							
(i)	Density	IS: 303-1989 RA 2013 IS:1734(Part-I)-1983RA 2013/Any equivalent Method	LRL/PT/PLWD/G05/19	9000.00	255	30.10.2019	30.11.2019
(ii)	Moisture Content	IS: 303-1989 RA 2013 IS:1734(Part-I)-1983RA 2013/Any equivalent Method					
6. THERMOPLASTIC PIPES							
(i)	Measurement of Dimensions Outside Diameter at any Point Wall Thickness Mean Outside Diameter	IS: 12235 (Part-1) - 2004 RA 2014/Any equivalent Method	LRL/PT/PVCP/G06/19	9000.00	255	30.10.2019	30.11.2019
(ii)	Density	IS: 12235 (Part-14) - 2004 RA 2014/Any equivalent Method					
GROUP-I (MECHANICAL) : (I) METALS & ITS ALLOY							
1. STRUCTURAL STEEL							
(i)	Tensile Strength	IS 1608 (Part 1) & ISO 6892/Any equivalent Method	LRL/PT/STEL/I02/19	8000.00	225	30.10.2019	30.11.2019
(ii)	Yield Stress	IS 1608 (Part 1) & ISO 6892/Any equivalent Method					
(iii)	Elongation	IS 1608 (Part 1) & ISO 6892/Any equivalent Method					
2. TMT BARS							
(i)	Tensile Strength	IS 1608 & IS 1786/Any equivalent Method	LRL/PT/TMTB/I03/19	12000.00	230	30.10.2019	30.11.2019
(ii)	Yield Stress	IS 1608 & IS 1786/Any equivalent Method					
(iii)	Elongation	IS 1608 & IS 1786/Any equivalent Method					

Product & Parameters		Method	PT Round ID	Fees		PT Material Dispatch Date	PT Report Issue Date
				INR	USD#		
(iv)	Mass per Meter Length	IS 1608 & IS 1786/Any equivalent Method					
GROUP-I (MECHANICAL) : (F) TEXTILE MATERIAL							
1. GEOGRIDS							
(i)	Tensile Strength*	ASTM D 6637:2001/Any equivalent Method	LRL/PT/GEGD/F01/19	4000.00	115	30.11.2019	30.12.2019
(ii)	Thickness (RIB and Junction) *	ASTM D 5199:2011/Any equivalent Method 2					
(iii)	Mass per unit area*	ASTM D 6637:2001/Any equivalent Method					
2. GEO TEXTILES							
(i)	Wide Width Tensile Strength*	IS 13162 (Part 5): 1992/Any equivalent Method	LRL/PT/GETX/F02/19	5000.00 for any four parameters and Rs. 500.00 each for additional parameter.	115 for any four parameters and \$15 each for additional parameter .	30.11.2019	30.12.2019
(ii)	Static Puncture Strength (CBR Push Through)*	ASTM D6241:1998/Any equivalent Method					
(iii)	Trapezoid Tearing Strength*	ASTM D 4533:2011/Any equivalent Method					
(iv)	Apparent Opening Size*	ASTM D 4751 : 2004/Any equivalent Method					
(v)	Wide Width Tensile Strength*	ASTM D 4595:1986/Any equivalent Method					
(vi)	Dynamic Perforated Test (Cone Drop Test)*	ISO 13433:2006/Any equivalent Method					
(vii)	Trapezoid Tearing Strength*	IS 14293:1995/Any equivalent Method					
3. GEO TEXTILES							
(i)	Mass per unit area*	IS 14716:1999/Any equivalent Method	LRL/PT/GETX/F03/19	5000.00	115	30.11.2019	30.12.2019
(ii)	Water permeability by Permittivity*	IS 14324:1995/Any equivalent Method					
(iii)	Grab Breaking Load*	ASTM D 4632:2008/Any equivalent Method					
(iv)	Index Puncture Resistance*	ASTM D 4833:2007/Any equivalent Method					
(v)	Melt Flow Rates of Thermoplastics by Extrusion Plastometer (Melt Flow Index)*	ASTM D 1238:2004/Any equivalent Method					

GROUP-II (NON DESTRUCTIVE TESTS) : (H) REINFORCED CONCRETE STRUCTURES

1. NDT (CONCRETE)

(i)	UPV	IS: 516 Part 5 Sec 1/Any equivalent Method	LRL/PT/NDTC/H03/19	15000.00	425	15.10.19	30.10.19
(ii)	Rebound hammer	IS:13311(Pt-II) : 1992/ Any equivalent Method					
(iii)	Half Cell Potential	ASTM C876-91/Any equivalent Method					

Note:

Parameters marked with (*) are not included in present scope of accreditation as per ISO:17043.

- A. PT round ID LRL/PT/NDTC/H03/19 will be conducted at PT provider's premises in Jaipur on 15th Oct 2019.
- B. Dates mentioned above are tentative and may be altered.
- C. Fees mentioned here are excluding GST, please deduct discount amount from fees (Refer Form-1 for discounts) and add GST on balance amount to calculate total fees payable.
- D. #Rates mentioned in USD are applicable for non Indian participants.
- E. #Rates mentioned in USD are including the packaging cost but excluding the shipping charges. Following procedure will be adopted for shipping of packed samples:
 - (i) To pay the actual cost of shipping, participants may ask the estimated cost by sending us an email. An estimate of competent courier service agency will be sent to them and they will be required to deposit the shipping cost along with PT fees.
 - (ii) Or participant may choose to arrange the picking of samples from our Lab's address on their own. For which we will handover the consignment to the courier agent appointed by them. Participants will be required to pay the cost directly to their courier agent for picking, shipping and delivery up to destination.
 - (iii) Shipping of the PT samples is subjected to local law of land for transportation of any particular material and may affect the dispatch. Participants are advised to assess the possibility of hassle free transit of material before applying for PT.

--- END ---