



# FULL BODY SANITIZER

**Sanitizing Tunnel / Chamber made by Crystal Logistics**, helps in eliminating virus and other pathogens on a person's surface as he/she passes through the chamber, using disinfecting chemicals.

**Objective:** - To sanitize people before and After they enter any protected premises.

**Applications:** - Hospitals/ R&D establishments, Government offices, Police/ Essential services offices, Shopping malls/Areas, Residential Complexes, Religious Places, Clinics and other areas.

**Working:** - Simple Components create a sanitization chamber which sprays a mist of disinfectant on the person walking through the chamber.

Care should be taken to walk slowly through the chamber so that the entire body and clothes etc get fully covered with the mist.



## 4x4x8 ft (LxBxH)



Structure: - GI/MS/Aluminium

Walls: - Acrylic sheet /FRP/ ERC

Number of Misting Nozzles: - 6

Average time per user: - 5 to 7 seconds

Chemical Tank storage capacity 200ltr / 500 ltr

Sensor Based

Pump Rating: - one HP with capacity of two litres per minute approx.

Entry / Exit plastic curtains is optional

## 6x4x8 ft (LxBxH)



Structure: - GI/MS/Aluminium

Walls: -Acrylic sheet /FRP/ ERC

Number of Misting Nozzles: - 8

Average time per user: - 5 to 7 seconds

Chemical Tank storage capacity 200ltr / 500 ltr

Sensor Based

Pump Rating: - 1.5 HP with capacity of 2.5 litres per minute approx.

Entry / Exit plastic curtains is optional

# 8x4x8 ft (LxBxH)



Structure: - GI/MS/Aluminium

Walls: - Acrylic sheet /FRP/ ERC

Number of Misting Nozzles: - 12

Average time per user: - 5 to 7 seconds

Chemical Tank storage capacity 200ltr / 500 ltr

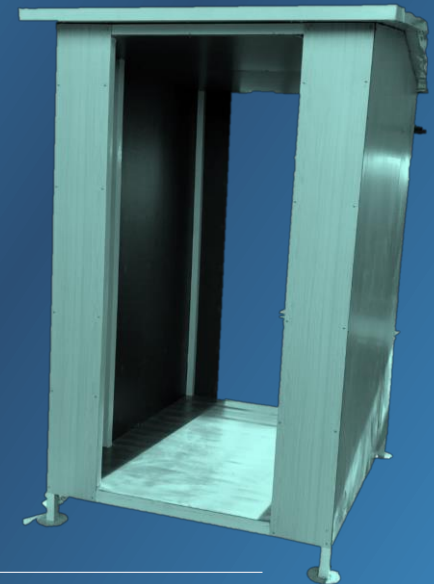
Sensor Based

Pump Rating: - two HP with capacity of three litres per minute approx.

Entry / Exit plastic curtains is optional

**Disinfectant:** - Opinion from a competent health expert/ manufacture of disinfectant must be taken while choosing the right disinfectant. World over many disinfectants such as diluted hypochlorous acid / alcohol-based disinfectants are used. Care should be taken to use the recommended concentration of the disinfectant to avoid any skin/ body reaction.

**\*\* We are  
working under  
the technical  
support /  
Guidance and on  
basis of white  
paper presented  
by FSAI.**



**CRYSTAL LOGISTIC COOL CHAIN LTD**

B-309, Virwani Industrial Estate, Goregaon (E)  
Mumbai 400063 Maharashtra. Ph: 022 4035 2000  
info@crystalgroup.in      www.crystalgroup.in