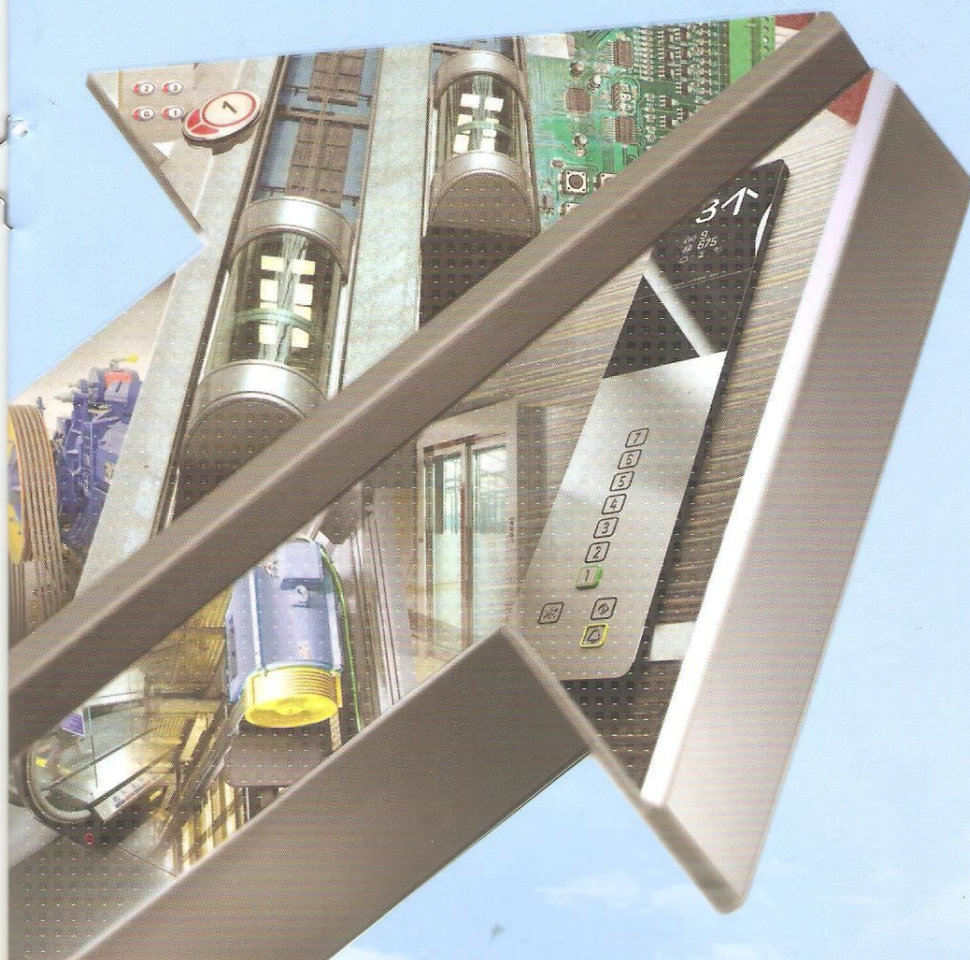


www.shivangenterprises.co.in

Providing the
Best **Vertical**
Transportation Solutions



SHI  **ANGI**
ENTERPRISES



SHIVANGI
ENTERPRISES

Welcome to Shivangi Enterprises

Shivangi enterprises was incorporated in 1997 by Mr. Jignesh Solanki an engineer by profession, possesses a vast experience in quality management & technical skill who believes in making the right decision at the right time.

His decades long association with kinetic elevator ltd. was instrumental in boosting the company's business all these years and has helped in many ways to implement suitable scientific methods at regular intervals to enhance customer satisfaction.

We adhere to cost effective quality service to help our clients meet their business objectives.

When the world's great cities could no longer grow outwards they started growing upwards. Elevator are the main vertical transportation.

Shivangi offers superlatives safety, quality, dependability and high performance standards.

We are one of the leading elevator companies based in gujarat. We have been in existence for more than three decades of experience indigenous manufacturing and catering to individual & corporate needs.

Shivangi largest elevator manufacture has now established itself as a premium brand in the elevator domain. Our products are of the highest quality and at par with international standards.

A Trusted & Reliable
Name In **Elevator**
Industries



Capacity 10 to 16 Passenger



CAPSULE ELEVATORS

Glass capsule elevators give an upscale, attractive feel to offices, shopping malls, multiplexes and other prestigious buildings. These lifts owe their stunning looks to the large glass viewing panels which provide entertaining ride to passengers.

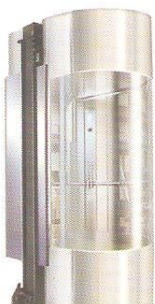
Capsule elevators work just as well as small personal lifts for private homes as they do in large office and commercial buildings. Installation on the exterior face of the building or in the lobby will totally change the look of a building. and of course, they incorporate state-of-the-art technology.

Features :

- ▶ Glass / Stainless steel / designer stainless steel / gold finish stainless steel.
- ▶ Powder coated (multi-color) cars and doors, elegant in looks, light in weight, and variable speed options.
- ▶ Microprocessor based controller with full collective-selective control.
- ▶ AC VVVF drive for smooth operations and variable speeds.
- ▶ Over load indications and floor announcement system.
- ▶ Infrared curtain for door safety.
- ▶ Automatic rescue device for power back up.
- ▶ Luminous push button / touch buttons, which are highly attractive and durable.
- ▶ Digital / LCD floor indication in LOP & COP.
- ▶ Decorative LED lights with suspended ceilings.
- ▶ PVC / Marble / granite flooring.
- ▶ Blower fan for multi-cross air delivery.



Round Glass Cabin



Round Glass Cabin

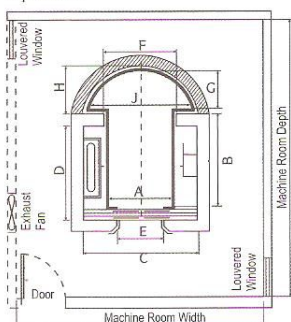


Three Side Glass Cabin

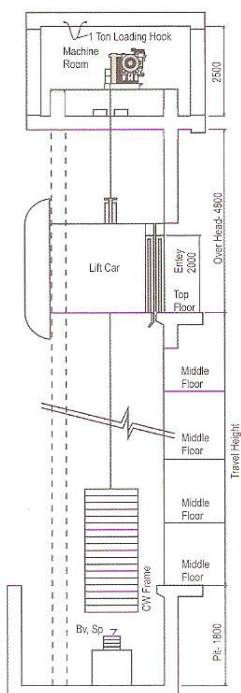
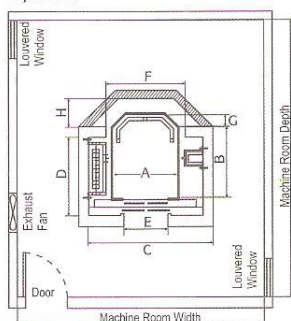


Glass Cabin

Option-A



Option-B



Options - A

| Load | | Car Inside | | | | Lift Well | | | | Entrance |
|--------|------|------------|------|------|-----|-----------|------|------|------|----------|
| Person | Kgs. | A | B | J | G | C | D | F | H | E |
| 10 | 680 | 1100 | 1300 | 1400 | 650 | 2200 | 1325 | 1330 | 1100 | 800 |
| 13 | 884 | 1200 | 1400 | 1550 | 700 | 2400 | 1425 | 1430 | 1100 | 900 |
| 16 | 1088 | 1300 | 1500 | 1700 | 750 | 2800 | 1530 | 1530 | 1200 | 1000 |

Options - B

| Load | | Car Inside | | | Lift Well | | | | Entrance |
|--------|------|------------|------|-----|-----------|------|------|-----|----------|
| Person | Kgs. | A | B | G | C | D | F | H | E |
| 10 | 680 | 1250 | 1300 | 250 | 2200 | 1450 | 1480 | 580 | 800 |
| 13 | 884 | 1400 | 1400 | 300 | 2400 | 1550 | 1630 | 650 | 900 |
| 16 | 1088 | 1550 | 1500 | 350 | 2800 | 1780 | 1650 | 790 | 1000 |



Capacity 04 to 20 Passenger

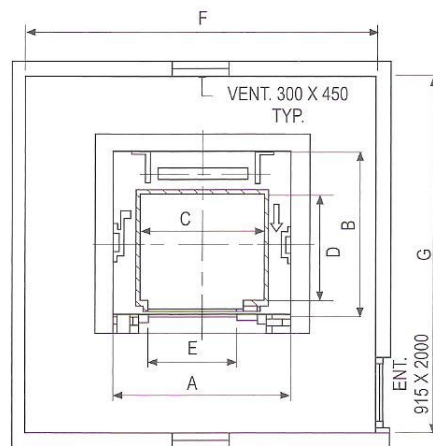
PASSENGER ELEVATOR

Manual Door Elevator

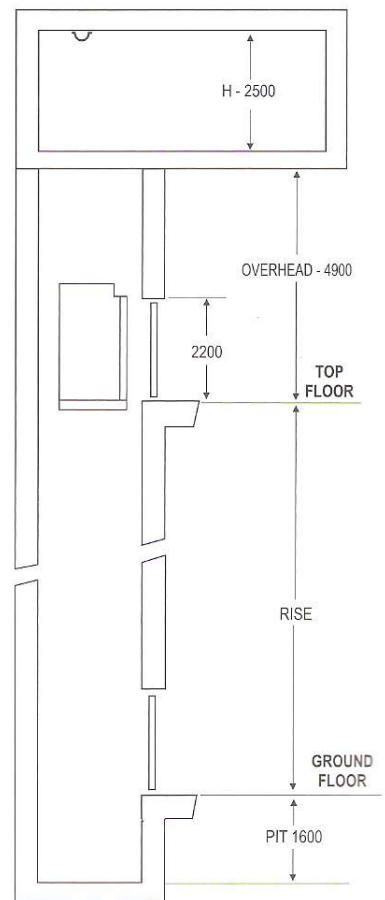
- ▶ The passenger elevators detailed here are designed to handle promptly and efficiently the transportation requirements of any type of building-which means any traffic condition.
- ▶ They are renowned for fine quality and robust performance.
- ▶ Delivers maximum lifting power with a minimum of effort.
- ▶ A superior combination of flexibility and performance.
- ▶ It gives benefits of jerk less travelling, economically low power consumption and excellent design.
- ▶ Features : Cent percent safety, Easy to use and maintain.



HOISTWAY MACHINE ROOM PLAN FOR MANUAL DOOR



HOISTWAY ELEVATION DRAWING



HOIST WAY MACHINE ROOM SIZE

PASSENGER LIFT WITH MANUALLY OPERATED DOORS

| LOAD | | LIFT WELL | | CAR INSIDE | | ENTRANCE | MACHINE ROOM | | |
|--------|--------|-----------|-------|------------|-------|----------|--------------|-------|--------|
| PERSON | WEIGHT | WIDTH | DEPTH | WIDTH | DEPTH | | WIDTH | DEPTH | HEIGHT |
| | IN KG. | A | B | C | D | E | F | G | H |
| 4 | 272 | 1600 | 1250 | 1100 | 700 | 700 | 3000 | 3000 | 2500 |
| 5 | 340 | 1600 | 1300 | 1100 | 850 | 750 | 3000 | 3200 | 2500 |
| 6 | 408 | 1670 | 1370 | 1100 | 1000 | 750 | 3000 | 3500 | 2500 |
| 8 | 544 | 1800 | 1600 | 1300 | 1100 | 750 | 3200 | 3500 | 2500 |
| 10 | 680 | 1850 | 1800 | 1350 | 1300 | 1000 | 3500 | 4000 | 2500 |
| 13 | 884 | 2500 | 1600 | 2000 | 1100 | 1000 | 4000 | 4200 | 2500 |
| 16 | 1088 | 2500 | 1800 | 2000 | 1300 | 1000 | 4500 | 4800 | 2500 |
| 20 | 1360 | 2500 | 2050 | 2000 | 1550 | 1000 | 5000 | 5000 | 2500 |

All Dimension are in mm.

This is General Data, it may be changed without notice.

All hoist way walls should be minimum 230 mm brick or 150 mm R. C. C.



Capacity 06 to 20 Passenger

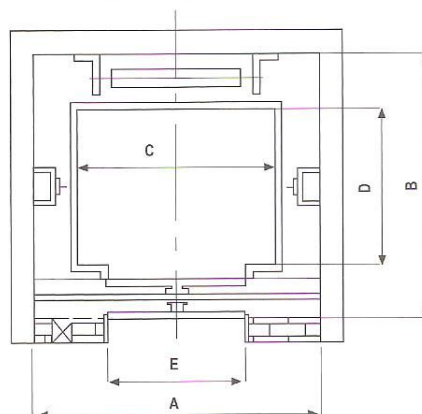
PASSENGER ELEVATOR

Auto Door Elevator

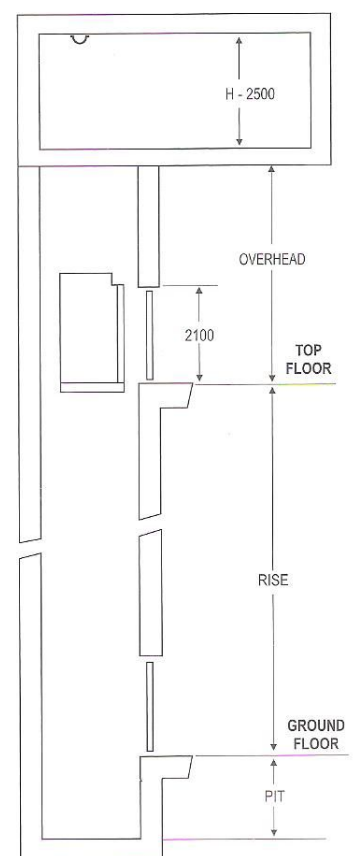
- ▶ SHIVANGI ELEVATORS has been engineered with full automatic doors.
- ▶ Fabricated with most advanced lift controls, appreciated for their high speed, smooth travel and perfect leveling different types of doors Centre Opening, Telescopic Opening.
- ▶ In high density requirements, we can provide grouping of multiple elevators to reduce the waiting time of the passengers.
- ▶ Our proficiency allows us to design and develop passenger Elevators of various sizes and capabilities.
- ▶ It gives benefits of jerk less travelling, economically low power consumption and excellent design.



HOISTWAY MACHINE ROOM
PLAN FOR AUTO DOOR



HOISTWAY ELEVATION DRAWING



HOIST WAY MACHINE ROOM SIZE
PASSENGER LIFT WITH AUTO DOORS

| LOAD | | LIFT WELL | | CAR INSIDE | | ENTRANCE | MACHINE ROOM | | | UP TO 1.5 M/Sec. | | UP TO 2.5 M/Sec. | |
|--------|--------|-----------|-------|------------|-------|----------|--------------|-------|--------|------------------|------|------------------|------|
| PERSON | WEIGHT | WIDTH | DEPTH | WIDTH | DEPTH | | WIDTH | DEPTH | HEIGHT | PIT | O.H. | PIT | O.H. |
| IN KG. | | A | B | C | D | E | F | G | H | K | M | K | M |
| 6 | 408 | 1900 | 1650 | 1100 | 1000 | 800 | 3000 | 3500 | 2500 | 1600 | 4800 | 2600 | 6700 |
| 8 | 544 | 1900 | 1900 | 1300 | 1100 | 800 | 3200 | 3500 | 2500 | 1600 | 4800 | 2600 | 6700 |
| 10 | 680 | 1900 | 2000 | 1350 | 1300 | 800 | 3500 | 4000 | 2500 | 1600 | 4800 | 2600 | 6700 |
| 13 | 884 | 2500 | 1900 | 2000 | 1100 | 1000 | 4000 | 4200 | 2500 | 1600 | 4800 | 2600 | 6700 |
| 16 | 1088 | 2500 | 2000 | 2000 | 1300 | 1000 | 4500 | 4800 | 2500 | 1600 | 4800 | 2600 | 6700 |
| 20 | 1360 | 2500 | 2300 | 2000 | 1550 | 1000 | 5000 | 5000 | 2500 | 1600 | 4800 | 2600 | 6700 |

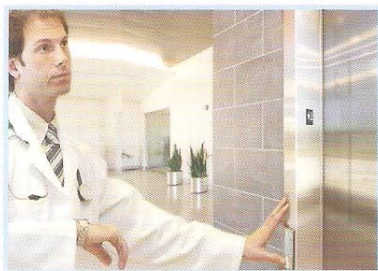
All Dimension are in mm.

This is General Data, it may be changed without notice.

All hoist way walls should be minimum 230 mm brick or 150 mm R. C. C.



Capacity 15 to 26 Passenger



A full range of people
and goods flow solutions
for demanding medical facilities



| Person | Capacity | Shaft-W | Shaft-D | Car-W | Car-D | Entrance |
|--------|----------|---------|---------|-------|-------|----------|
| | Kg | A | B | C | D | E |
| 15 | 1020 | 1900 | 3000 | 1000 | 2400 | 800 |
| 20 | 1360 | 2300 | 3000 | 1300 | 2400 | 900 |
| 26 | 1768 | 2600 | 3000 | 1600 | 2400 | 1000 |

Collapsible Door can be provided if required.

Automatic Telescopic Door Lifts

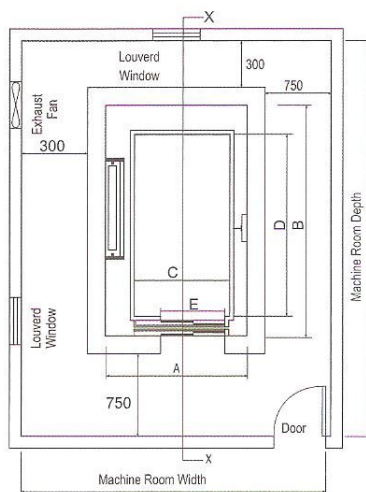
| Person | Capacity | Shaft-W | Shaft-D | Car-W | Car-D | Entrance |
|--------|----------|---------|---------|-------|-------|----------|
| | Kg | A | B | C | D | E |
| 15 | 1020 | 1700 | 3000 | 1000 | 2400 | 800 |
| 20 | 1360 | 1950 | 3000 | 1300 | 2400 | 900 |
| 26 | 1768 | 2100 | 3000 | 1600 | 2400 | 1000 |

- All dimension in mm.
- This is General Data, it may be changed without notice. For more details contact us.
- All hoist way walls should be minimum 230 mm brick or 150 mm RCC.

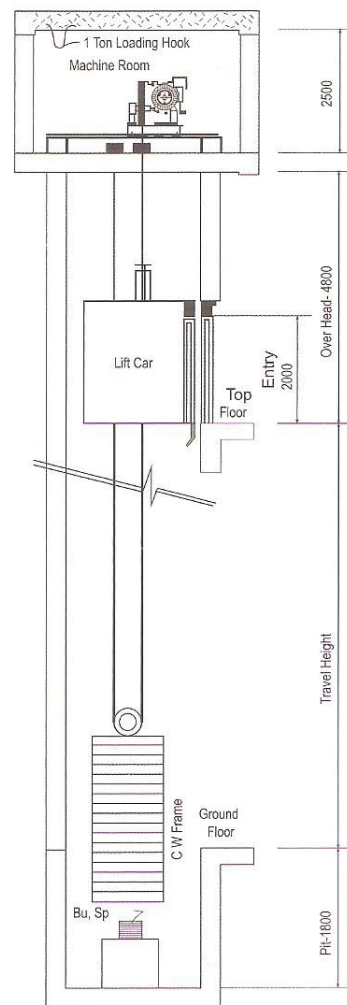
HOSPITAL ELEVATOR

Hospital Elevators provide easy transportation of patients and bulky medical equipment such as gurney, stretchers and wheel chairs. These lifts feature sophisticated looks and operated smoothly.

Hospital Elevators are available in a wide variety, capable of carrying between 15 to 26 passengers at a time. These elevators usually feature center-opening, telescopic power-operated doors and easy to use for people.



Automatic Centre Opening Door Lifts



(section : X-X) Lift Well





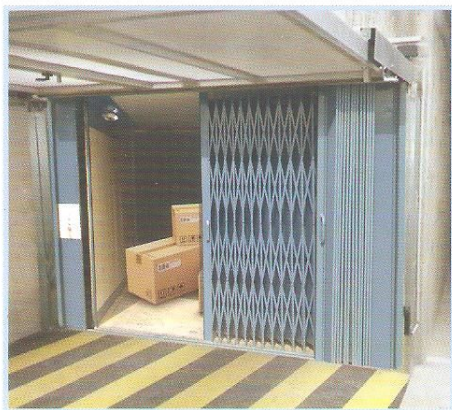
Capacity 500 to 5000 kg Load



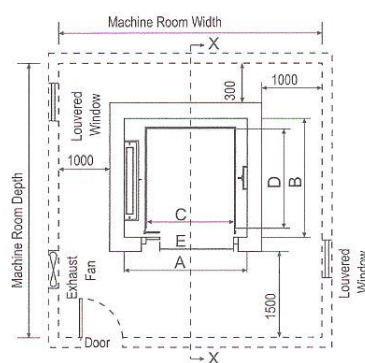
GOODS ELEVATOR

A freight elevator is used to carry goods only, though some do both to allow operators and those loading goods along for the ride.

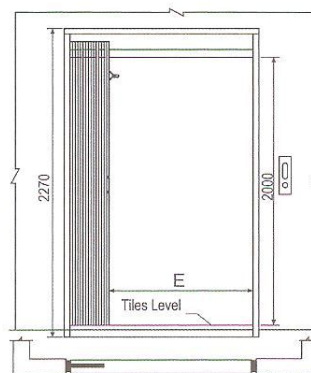
Freight elevators are typically larger and capable of carrying heavier loads than a passenger elevator, generally from 2,300 to 4,500 kg. Freight elevators have manually operated doors and often boast rugged interior finishes to prevent damage while loading and unloading. Although hydraulic freight elevators exist, electric elevators are more energy-efficient for the work of freight lifting.



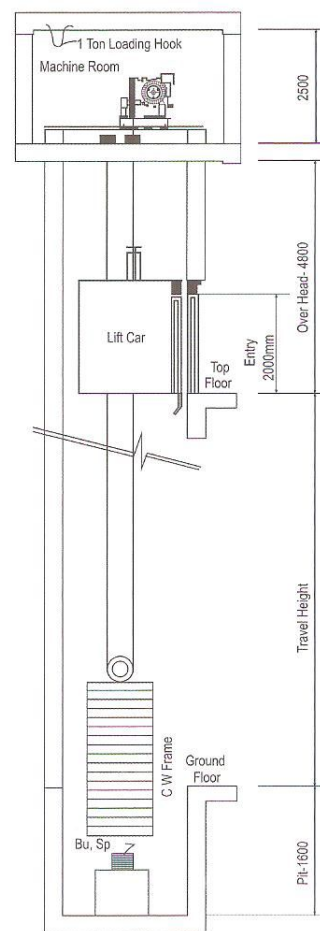
To Move Freights with Safe Condition



Lift Shaft, Car, C.W. & Machine Room Plan



Collapsible Door Landing



(section : X-X) Lift Well

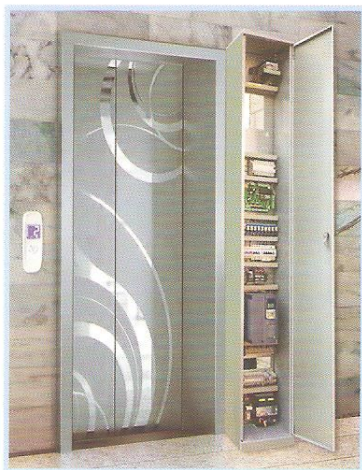
| CAPACITY | SHAFT W | SHAFT D | CAR W | CAR D | ENTRANCE | LOAD KG | SPEED MPS | PIT DEPTH | OVER HEAD |
|----------|---------|---------|-------|-------|----------|---------|-----------|-----------|-----------|
| Kgs. | (C) | (D) | (A) | (B) | (E) | | | | |
| 500 | 1900 | 1500 | 1100 | 1200 | 900 | 500 | 0.25 | 1600 | 4800 |
| 1000 | 2300 | 2100 | 1400 | 1800 | 1150 | 3000 | 1.0 | | |
| 1500 | 2600 | 2300 | 1700 | 2000 | 1400 | | | | |
| 2000 | 2600 | 2800 | 1700 | 2500 | 1400 | | | | |
| 3000 | 2900 | 3300 | 2000 | 3000 | 1700 | 4000 | 0.25 | 2200 | 7400 |
| 4000 | 3400 | 3400 | 2500 | 3000 | 1900 | 5000 | | | |
| 5000 | 3500 | 4300 | 2500 | 3600 | 1900 | | | | |

• All dimension in mm.

• This dimension are based on vertical bi-parting doors, it may varied for collapsible or automatic door operation.



Capacity 03 to 20 Passenger



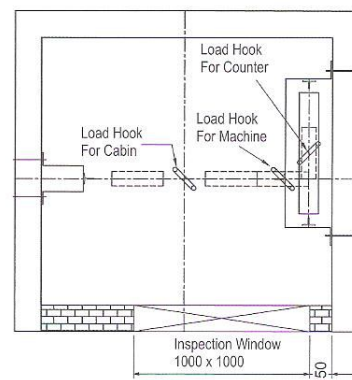
Go Green Gearless

Environment

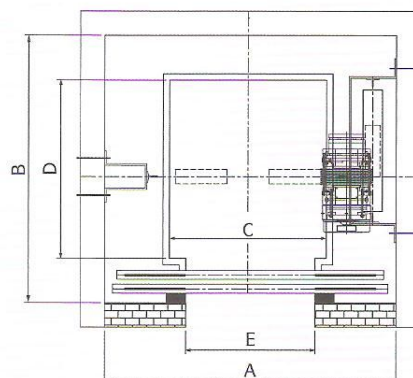
Energy Saving
up to 30%

Space Saving

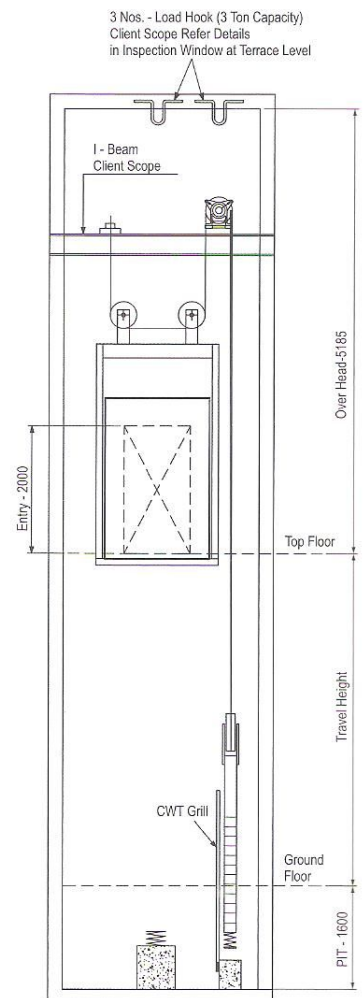
Low Noise



Inspection Window at Terrace Level



Lift Well Plan



Lift Well Section View

Advantages of MRL Elevators:

- Permanent Magnet Gearless Machine for smooth and quiet motion.
- 1 m/s to 1.6m/s speed range (180 starts per hour).
- 10 to 16 passenger load range (680 - 1088kg).
- Smooth ride, due to the first-class roller shoe suspension.
- Versatile landing and car door configurations.
- Earthquake-friendly jugged guiding.
- Small control cabinet on the upper level.
- Totally integrated system for greater reliability.
- Time and money-saving benefits: long lifespan, low operating cost, easy installation and service.
- Cost-efficient elevator application, No machine room.



HOME ELEVATOR

Home elevators not only increase the value of your home, but can also provide you stunning showpiece. At the same time, home lifts can allow the disabled and elderly to easily move about a multi-level dwelling.

The term "home elevator" commonly refers to a lift enclosed in a shaft, and which can travel vertically as much as 15 m. (50 ft.). Home elevators make it easier to carry groceries, laundry or anything else from one floor to another. And today, they're fully customizable - choose from a wide range of materials, such as marble walls or stained glass, to turn your home elevator into an expression of your own unique style!

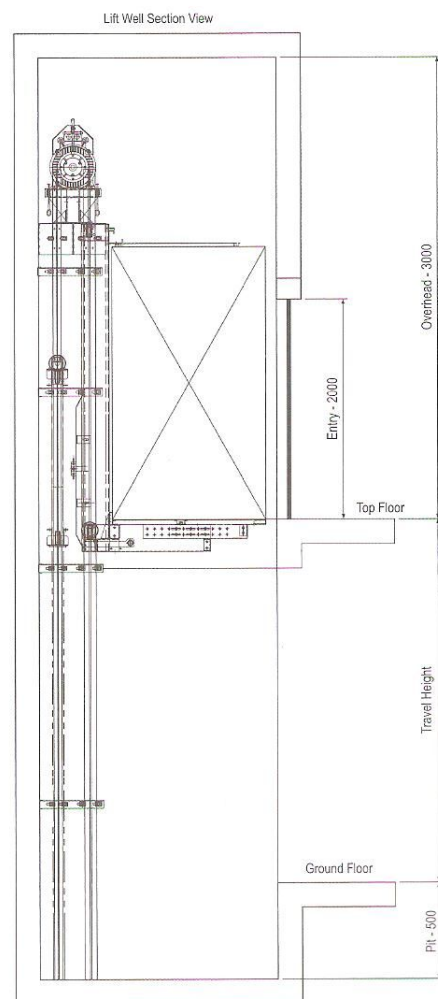
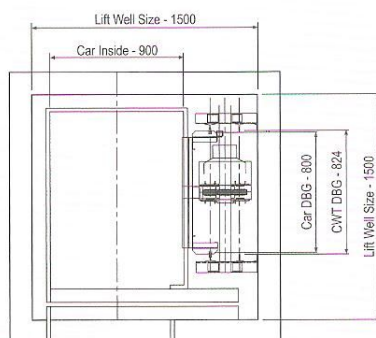
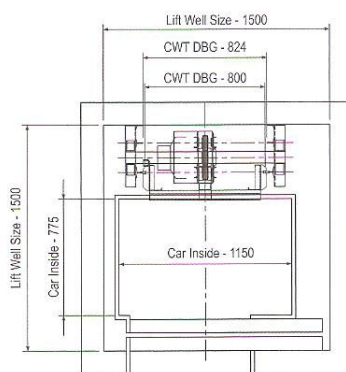


Capacity 03 to 06 Passenger



Specifications

| | | | |
|-----------|-------------------|------------------|----------|
| RPM | 120 | Pulley Dia. | 100 mm |
| Frequency | 12 Hz. | Rope Dia. | 4 mm |
| Voltage | 230 VAC | No. of Ropes | 4 |
| kW / Hp | 0.75 / 1 | Lifting Capacity | 300 kg |
| Weight | 70 kg. | Lift Speed | 0.32 m/s |
| Brake | Pick-up : 220 VDC | Max. Travel | 15 Mts. |
| Voltage | Holding : 110 VDC | Starts / Day | 100 |

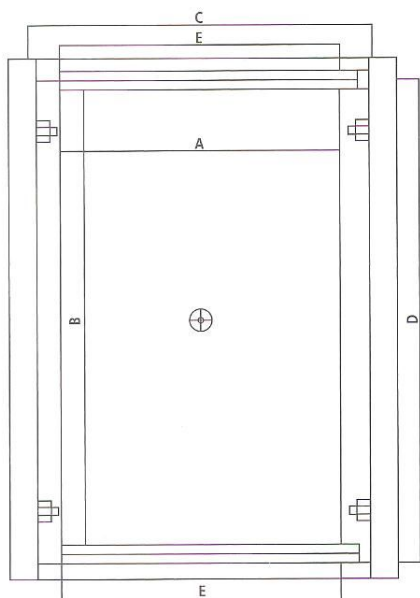


Hydraulic Car Elevator

Direct System

Automated Car Lift is ideally used for vertical car parking places such as automobile show rooms, multi-level parking facilities, rooftop parking, etc. where there is shortage of space.

Equipped with latest technology and advanced machinery, our Automated Car Parking Lift is easy to install and erect within a limited time frame. These lifts are robust, durable and have longer functional life.



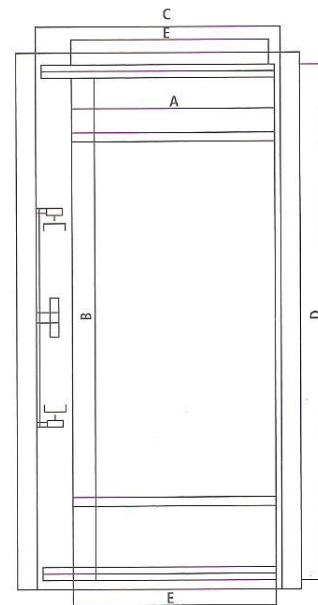
Hydraulic Car Elevator with Direct System

| Capacity | Car Dimension | | Shaft Dimension | | Door Opening |
|----------|---------------|------|-----------------|------|--------------|
| (kg) | (A) | (B) | (C) | (D) | (E) |
| 3000 | 3100 | 5400 | 1050 | 5900 | 2400 |

Indirect System

Automated Car Lift is ideally used for vertical car parking places such as automobile show rooms, multi-level parking facilities, rooftop parking, etc. where there is shortage of space.

Equipped with latest technology and advanced machinery, our Automated Car Parking Lift is easy to install and erect within a limited time frame. These lifts are robust, durable and have longer functional life.



Hydraulic Car Elevator with Indirect System

| Capacity | Car Dimension | | Shaft Dimension | | Door Opening |
|----------|---------------|------|-----------------|------|--------------|
| (kg) | (A) | (B) | (C) | (D) | (E) |
| 3000 | 3100 | 5400 | 4000 | 6000 | 2400 |

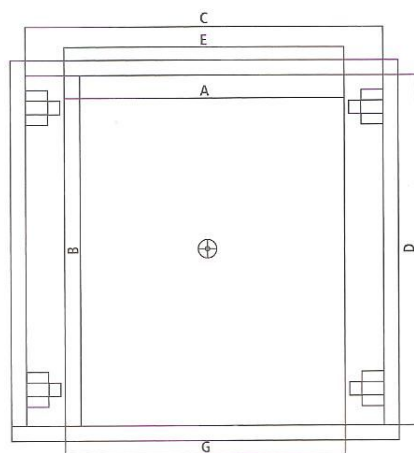
Hydraulic Platform Elevator

Container Loading & Unloading System

Mainly used for heavy goods for Loading & Unloading.

Can carry small trucks & fork lift.

Maximum height upto 3 mtrs.

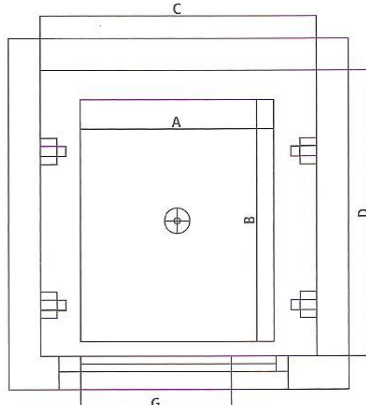
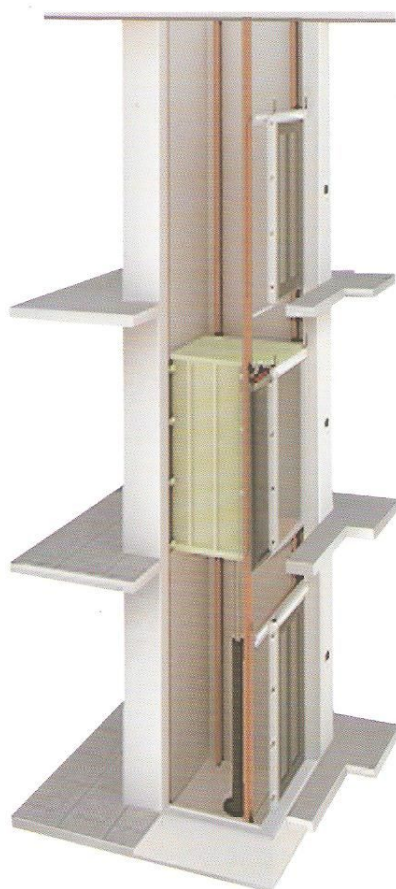


Hydraulic Platform Elevator

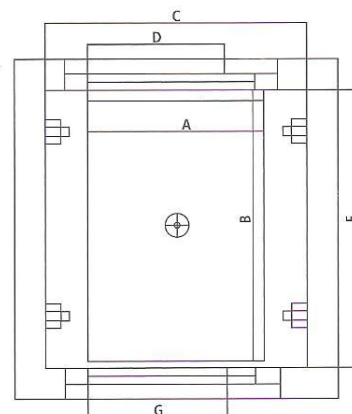
| Capacity | Platform Size | | Shaft Dimension | | Clear Opening |
|----------|---------------|------|-----------------|------|---------------|
| (kg) | (A) | (B) | (C) | (D) | (E) |
| 2500 | 2000 | 2500 | 2700 | 2700 | 2000 |
| 5000 | 2500 | 3500 | 3200 | 3700 | 2500 |
| 10000 | 3000 | 4500 | 3700 | 4700 | 3000 |
| 15000 | 4000 | 7000 | 4700 | 7200 | 4000 |

Hydraulic Goods Cum Passenger Elevator

Direct System



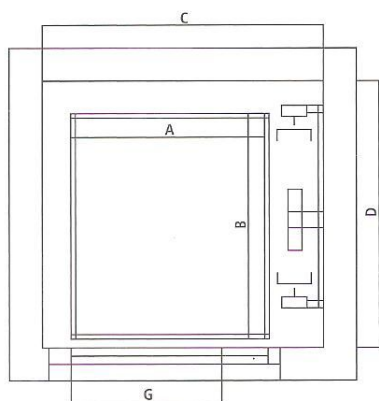
One Side Opening



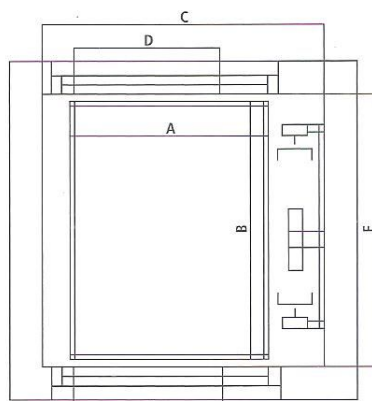
Two Side Opening

Hydraulic Goods Cum Passengers Lift With Direct System

| Capacity | Car Size | | Lift Shaft Size | | Lift Shaft Size | | Door Opening |
|----------|----------|------|-----------------|------|------------------|------------------|----------------------------|
| | | | | | One Side Opening | Two Side Opening | Collapsible / Imperforated |
| (kg) | A | B | C | D | E | F | G |
| 500 | 1100 | 1200 | 1850 | 1500 | 1800 | 1400 | 850 |
| 750 | 1300 | 1500 | 2050 | 1800 | 2000 | 1700 | 1000 |
| 1000 | 1400 | 1800 | 2150 | 2100 | 2150 | 2000 | 1100 |
| 1500 | 1700 | 2000 | 2450 | 2300 | 2450 | 2200 | 1350 |
| 2000 | 1700 | 2500 | 2450 | 2800 | 2450 | 2700 | 1575 |
| 2500 | 2000 | 3000 | 2750 | 2800 | 2750 | 2700 | 1575 |
| 3000 | 2000 | 3000 | 2750 | 3300 | 2750 | 3200 | 1575 |
| 4000 | 2500 | 3000 | 3200 | 3300 | 3200 | 3200 | 2000 |
| 5000 | 2500 | 3600 | 3200 | 3900 | 3200 | 3800 | 2000 |



One Side Opening



Two Side Opening

Hydraulic Goods Cum Passengers Lift With Direct System

| Capacity | Car Size | | Lift Shaft Size | | Lift Shaft Size | | Door Opening |
|----------|----------|------|-----------------|------|------------------|------------------|----------------------------|
| | | | | | One Side Opening | Two Side Opening | Collapsible / Imperforated |
| (kg) | A | B | C | D | E | F | G |
| 500 | 1100 | 1200 | 1850 | 1500 | 1850 | 1400 | 850 |
| 750 | 1300 | 1500 | 2050 | 1800 | 2050 | 1700 | 1000 |
| 1000 | 1400 | 1800 | 2150 | 2100 | 2150 | 2000 | 1100 |
| 1500 | 1700 | 2000 | 2450 | 2300 | 2450 | 2200 | 1350 |
| 2000 | 1700 | 2500 | 2450 | 2800 | 2450 | 2700 | 1350 |
| 2500 | 2000 | 3000 | 2750 | 2800 | 2750 | 2700 | 1575 |
| 3000 | 2000 | 3000 | 2750 | 3300 | 2750 | 3200 | 1575 |
| 4000 | 2500 | 3000 | 3200 | 3300 | 3200 | 3200 | 2000 |
| 5000 | 2500 | 3600 | 3200 | 3900 | 3200 | 3800 | 2000 |

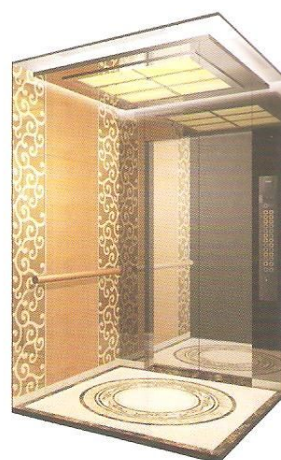
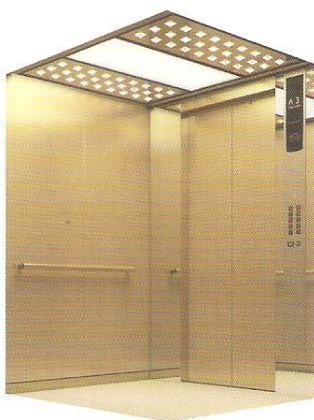
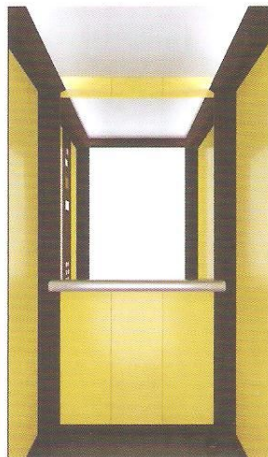
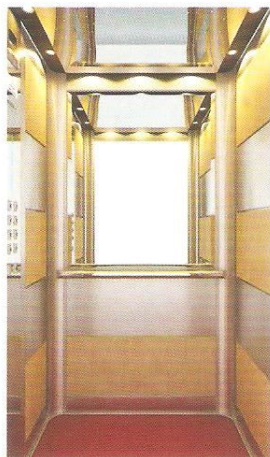
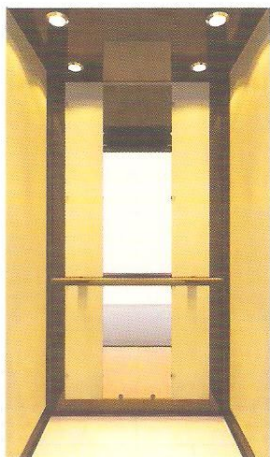
Indirect System



Sophisticated Car Designs

With a wide choice of finishes

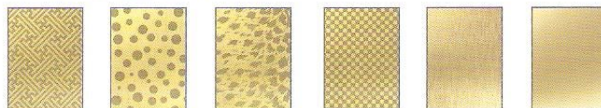
SHIVANGI Elevator Cabin are attractive give an upscale to the building decor and your commitment to your valued customer comfort's



ETCHING S.S. FINISH



ETCHING GOLD FINISH



Door Designs

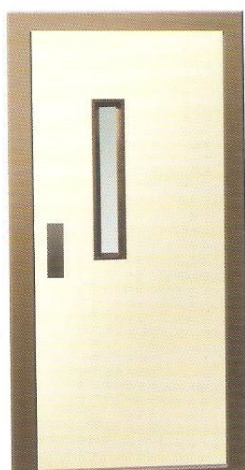
The Stylish way to Brand Your Elevator



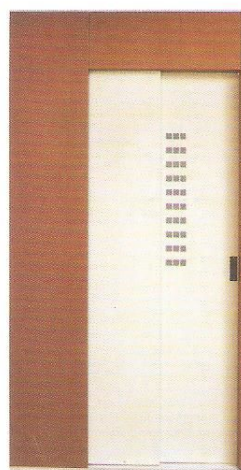
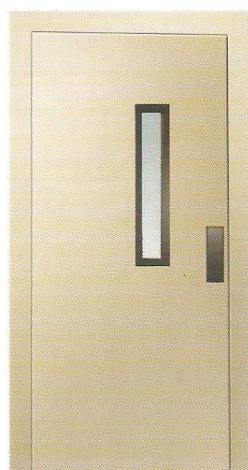
M.S. Collapsible Door



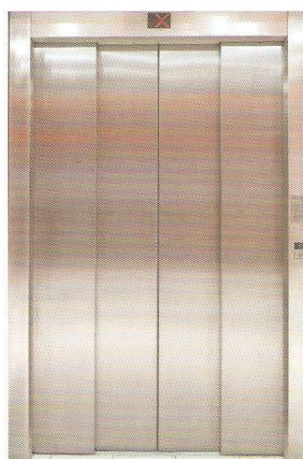
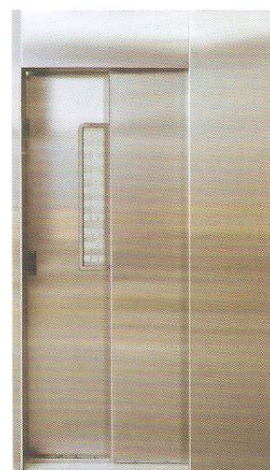
M.S. Powder Coated Imperorated Door



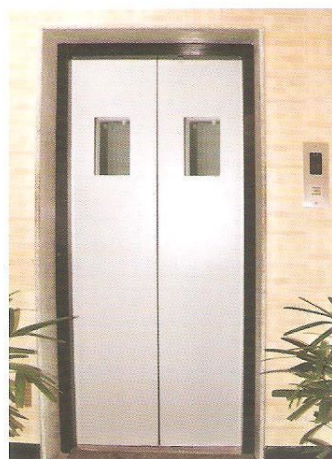
M.S. Powder Coated Swing Door



Manual Powder Coated & S.S. Telescopic Door



4 Fold Auto Door



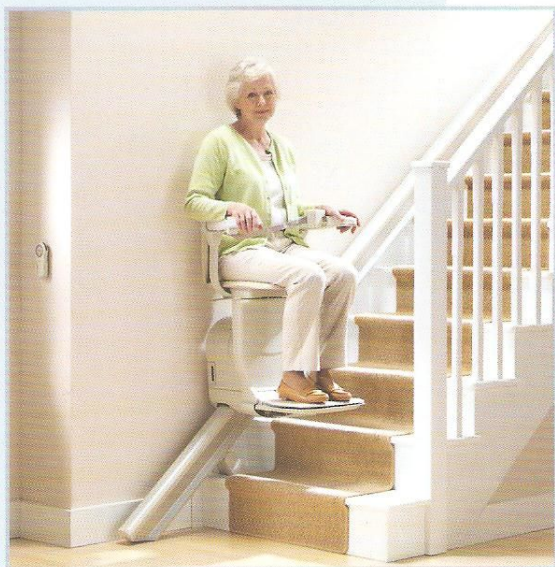
M.S. Center Opening Auto Door



S.S. Center Opening Auto Door



Glass With Stainless Steel Framed Finish Auto Door



Straight Staircases

Sleek and smooth

A gentle touch of the controls is all it takes to climb your stairs.

Neat, elegant and tidy

Our elegant straight rail and fold-away chair design leaves your hallway looking spacious and tidy with plenty of space for other stair-users.

Easy fold for added space

When you fold your Siena arms, then the seat, the footrest folds with it, folding the chair neatly away for extra space.

Safe and simple to get on and off

Use either the manual swivel lever or our optional powered swivel seat to get on and off your Siena.

Curved Staircases

Fitted to the stairs not the wall

The Curved Stairlift runs along slim, twin rails that are tailor-made to fit your stairs and ensure the tightest fit possible. The rail is also attached to the stairs, not to the wall, so installation is quick and clean.

Choice of colours to blend in with your decor

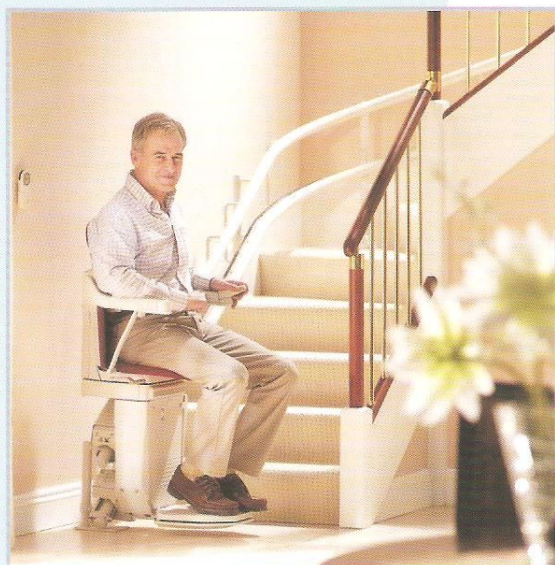
The widest selection of upholstery material is available in either modern leather or soft woven fabrics. Choose from a wide range of contemporary colours, so you can match the chair to your home's decor.

Easy-to-use controls

The control just requires your hand to move it left or right, depending on the direction you want to go, so it's easy for everyone to use.

Stairlift won't move until you're safely seated

Our unique seat-load sensor ensures that your stairlift won't move until you're safely seated and ready to go.



Pine



Cranberry



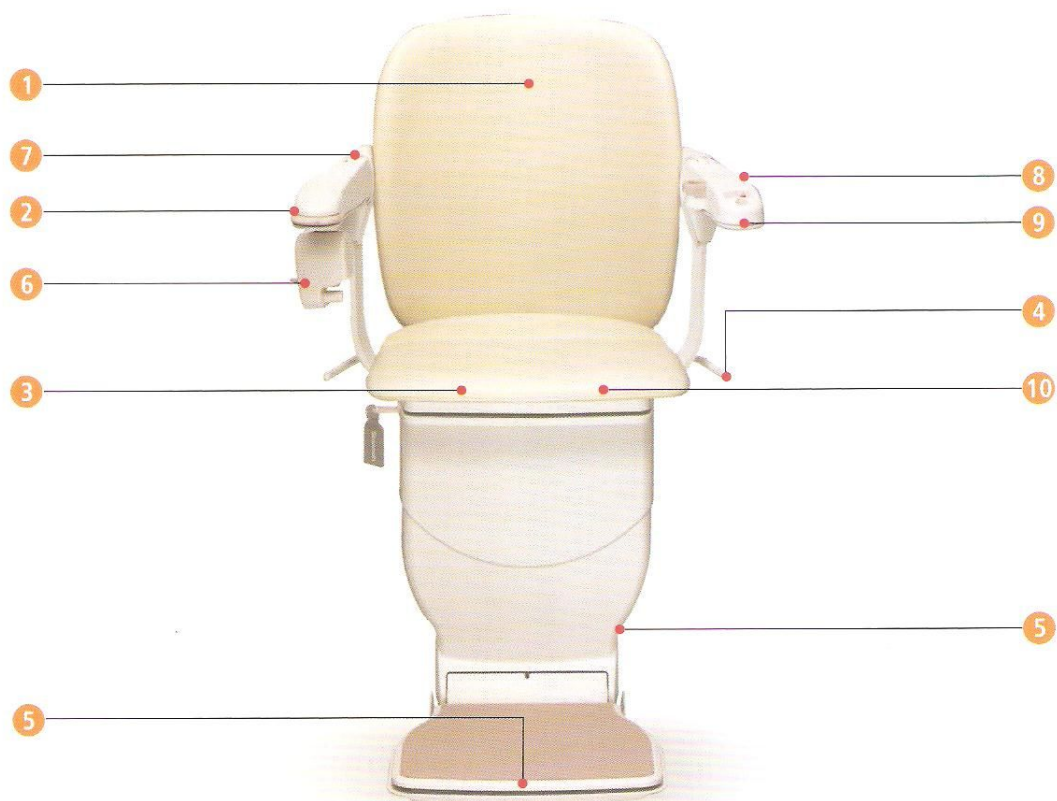
Midnight



Walnut



Ivory



SHIVANGI True comfort and safety in one

We take great care to make your stairlift safe and comfortable. This is why we designed the Shivangi to include a range of helpful features that make you feel right at home when you use it.

Below are the benefits and features common to the Shivangi for straight stairs.

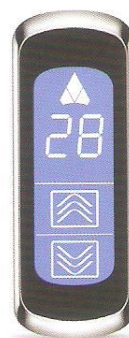
- 1 Comfortable and stylish chair**
The Siena offers true comfort, with a cushioned back and generously upholstered, padded seat available in hard-wearing vinyl upholstery all of which are fire retardant, and available in a choice of five colours to match your décor.
- 2 Easy-to-use controls**
To operate your Siena, gently move the controls in the direction you wish to travel.
- 3 Folding options (Manual)**
Simply fold the arms, then the seat and as you do the footrest will automatically raise at the same time. Or choose the optional powered footrest, see point 9.
- 4 Swivel levers and options**
Use the standard manual swivel levers, or optional powered one or two-way swivel, which is designed for narrow hallways, to get off your stairlift in the safest position at the top or bottom of your stairs.
- 5 Safety edges**
Safety sensors around the footrest and carriage automatically detect any obstruction on your stairs, bringing your Siena to a safe and gentle stop.
- 6 Seatbelt options**
The retractable seatbelt as highlighted opposite, can be fastened simply with one hand. A range of other seatbelt designs are available.
- 7 Arm isolation**
This safety system prevents your Siena from moving until the armrest nearest the bottom of the staircase is fully lowered.
- 8 On-off switch**
Clear easy-to-use on and off button.
- 9 Powered footrest (Optional)**
Our powered footrest folds or unfolds independently, ideal for you to enter or exit the chair with the footrest out of the way.
- 10 Adjustable seat height (On installation)**
Ensures your stairlift seat and footrest height are perfectly positioned to you for complete comfort.



COP & LOP

Car Operating & Landing Operating Penal

People in Motion Technology to
Delivery Human Single for
machine to Move.



Touch Screen with LCD
Surface Mounted design
with Plexiglass Panel
and Zinc Alloy Out Frame

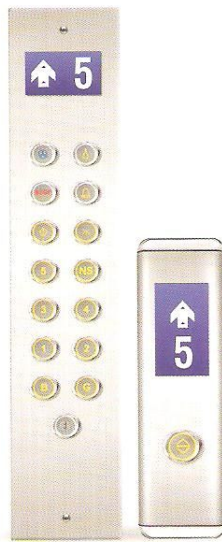


Touch Landing Operating Panel

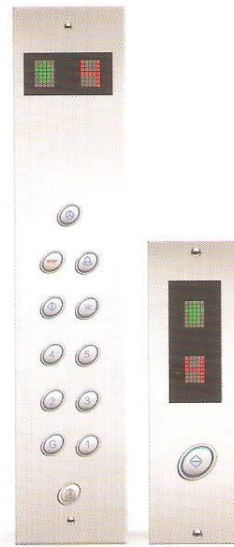
COP & LOP



SE- COP-LOP - 01



SE- COP-LOP - 02



SE- COP-LOP - 03



SE- COP-LOP - 04

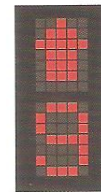
Push Buttons



Display



LCD Display



Dot Matrix
Square Display

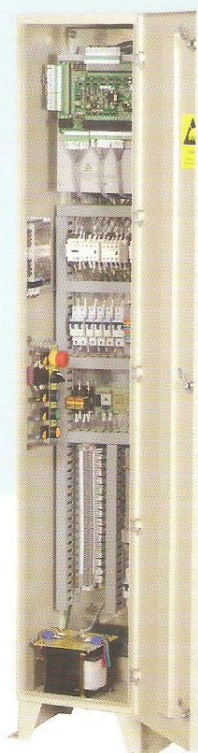


Dot Matrix Round
Display

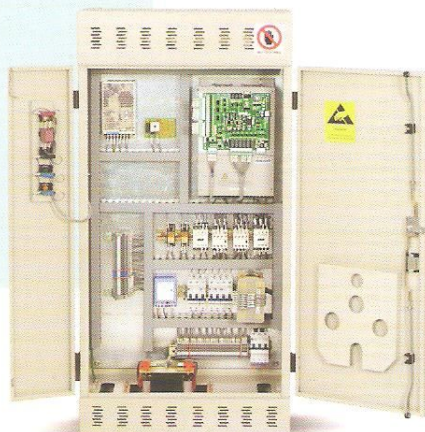


Seven Segment
Display

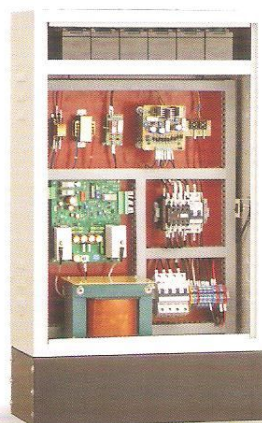
Microprocessor Control Panel



MRL Controller



VVVF, ARD
Microprocessor Control Panel

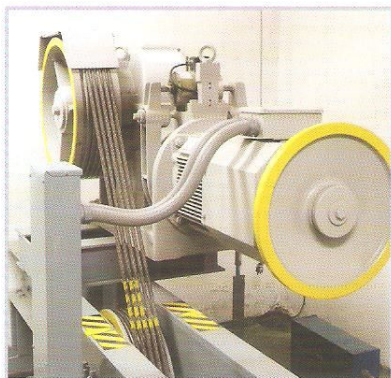


Automatic Rescue Device
(ARD)



V3F Drive

Traction Motor Unit



Machines are specially designed for various application such as speed and capacity with rigid & rugged reliability, smooth trouble free operation. Use standard worm and worm gears with taper roller bearings and thrust bearing in machine for maximum load carrying capacity. The perfect lubrication system gives longer life and smooth operation. The machine are mounted on special type of rubbers which have extra ordinary dumping capacity, due to this characteristic, the machine runs vibration free.



Traction Machine



Traction Machine

Gearless Motor Unit

The SHIVANGI on machine-room elevator is applicable for passenger elevator, housing elevator, sightseeing or other with carrying capacity no more than 2,000 kg running speed on more than outdoor steel-structure shaft frame for rebuild buildings.



Home Lift Gearless Machine



Gearless Machine

Elevator Components



Swing Door
Moveable Contact



Door Closer



Lock-Key



Motor



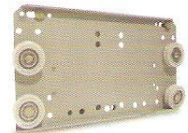
VVVF-4 Drive



Car Rope Roller DIA-64



Car Moveable Fix Contact Complete Set



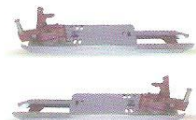
Carriage Plate Assembly



Eccentric Roller DIA-48



Coupler Catcher



Coupler CO and TC



D-Locking Set



Gate Lock Roller



Encoder



Eccentric Roller DIA-32



Gate Lock Assembly



Gate Lock Fix Contact
Complete Set



Electric Contact



Guide Shoe



Hanger Clip



Idle Sprocket



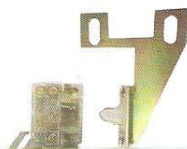
HTD Base-Timing Belt



Key



LDG Door Spring



LDG Moveable Fix Contact
Complete Set



LDG Rope Roller DIA-47



Motor Pulley



Moveable Fix Contact



Thimble



Concentric Roller DIA-48



L Bracket



Samosa Bracket

Elevator Components



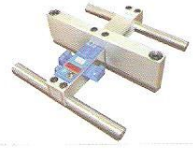
Sensor



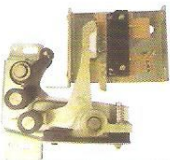
Guide Rail



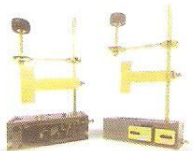
Traction Rope



Rope Sensor
(Multi Rope Type)



Auto Door Lock



B.B.L Gate Lock



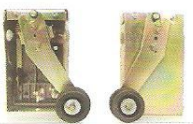
O Gate Lock



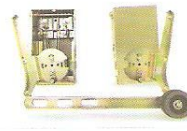
Q K Gate Lock



Limit Switch NO-NC



Final Limit Switch



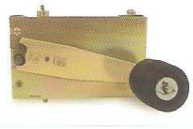
Car Gate Switch with Striker



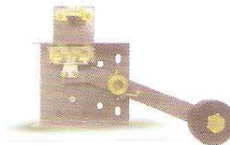
Safety Switch



Scissor Limit



Without Floor Limit



B.B.L Limit Switch



(K) Contact Male Female



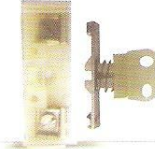
G1 G2 Panel Contact



Connector 15 Amp



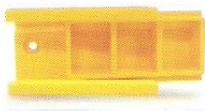
Connector 30 Amp



El Switch Movable
and Fix Contact



Cable Hanger Big



Cable Hanger Small



Inspection Box



PIT Switch Box



Pencil Reed Switch



Reed Switch Box



Retiring Cam



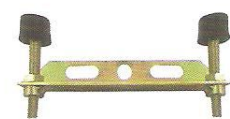
Swing Door Lock



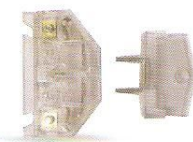
Wire Rope



Multi Rope



Stopper Bracket

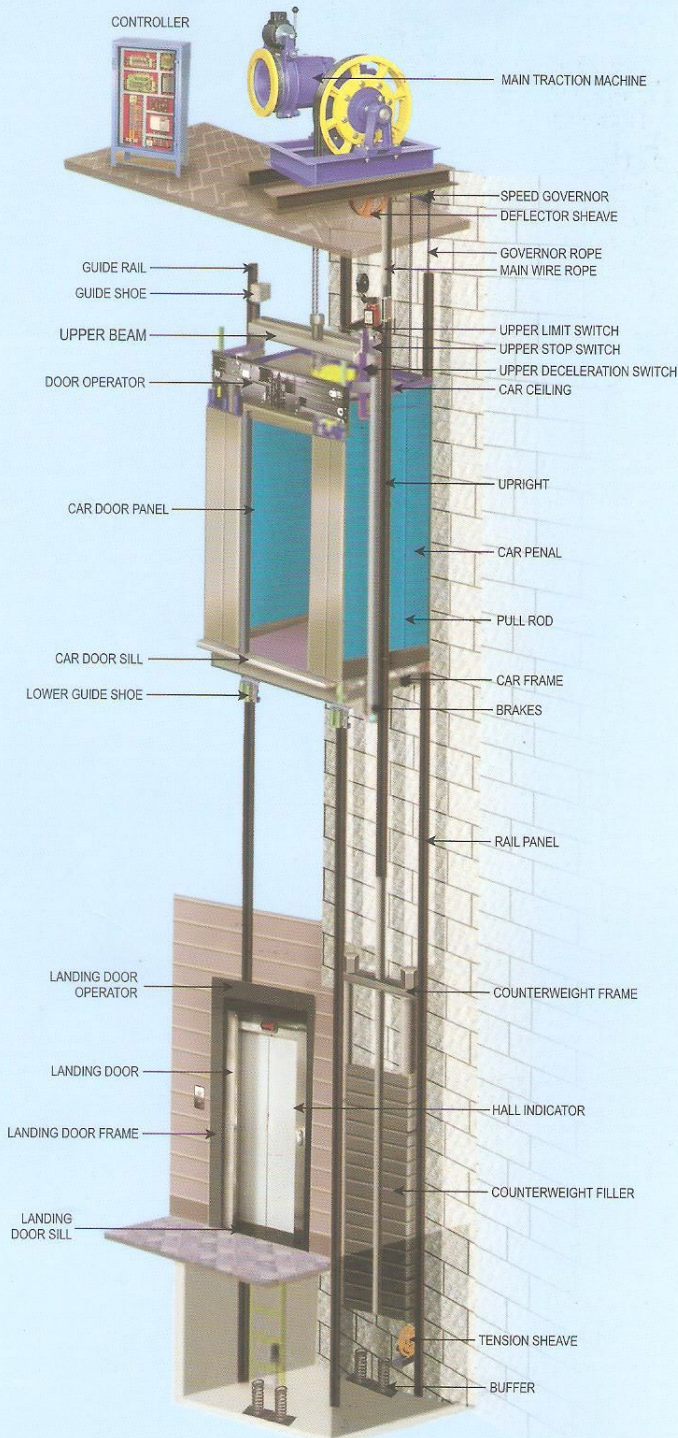


U Bridge Gate / Lock Contact



www.shivangienterprises.co.in

ELEVATOR SYSTEM



Products Range

ELEVATORS TYPES

Passenger Elevator
Panoramic / Capsule Elevator
Hospital Stretcher Elevator
Industrial / Goods Elevator
Hydraulic Elevator

RANGE OF DOORS

Center Opening Auto Door
Telescopic Sliding Auto Door
Glass Panel Auto Door
Manual Callapsible Door
Manual Imperforated Door
Wooden, Steel, Glass Swing Door
Steel, Glass Telescopic Sliding Door

MACHINE TYPES

Bottom Traction Machine
Single Shaft Traction Machine
Machine Roomless Machine
Gearless Permanent Magnet Machine
Over Speed Governor

SHIVANGI
ENTERPRISES

UG - 25, Abhishek - 5, Sanghvi Tower,
Adajan, Surat - 395009, Gujarat, INDIA

Phone : + 91 - 261 - 6597215

Mobile : + 91 - 92281 52165

E-mail : shivangienterprise97Gmail.com

Website : www.shivangienterprises.co.in

Branches : Vadodara, Bharuch, Ankleshwar,
Surat, Navsari, Bilimora, Valsad, Vapi.

Providing the Best Vertical Transportation Solutions