



# Ultrasound Solutions

## PRODUCT CATALOG



# 2019



# Mission Statement

SDT provides ultrasound solutions that help our customers gain a better understanding about the health of their factory.

We help them predict failures, control energy costs, and improve product quality while contributing to the overall reliability of their assets.







# Table of Contents

SDT340 Systems	1
Checkers Kits	3
LUBExpert Kits	5
UAS 4.0 Software and Support	7
Sensors	11
Transmitters	15
Cables	17
Training	21
Calibrations	25
Accessories	29
SDT270/200 Configured Kits	39
SDT270 Upgrades	43
UAS 2.0 Software	47
SDT270/200/170/ATEX Sensors	49
SDT270/200/170 Accessories	53
SDT Sales & Support	58





# SDT340 Systems





### **SDT340 System**

FS.R340.SYS

SDT340 w/ Battery, Charger, Headphones, Cable, SDT930 Case and Accessories



### **SDT340 Pro Lite System**

FS.R340.PLT

SDT340 System w/ UAS Lite, RS2T, 10.8" RS2N, FLEX2, AC1, SDT930 Case and Accessories



### **SDT340 Pro Standalone System**

FS.R340.PSA

SDT340 System w/ UAS 4.0 Standalone, RS2T, 10.8" RS2N, FLEX2, AC1, SDT930 Case and Accessories



### **SDT340 Pro Server System**

FS.R340.PSV

SDT340 System w/ UAS 4.0 Server, RS2T, 10.8" RS2N, FLEX2, AC1, SDT930 Case and Accessories



### **SDT340 Pro Cloud System**

FS.R340.PCL

SDT340 System w/ UAS 4.0 Cloud, RS2T, 10.8" RS2N, FLEX2, AC1, SDT930 Case and Accessories

# Checker Kits







### SDT LEAKChecker Kit

FS.LKC.001-01

LEAKChecker w/ Accessories



### SDT LUBEChecker Kit

FS.LBC.001-01

LUBEChecker w/ LUBEsense1, Cradles and Accessories



### SDT HATCHChecker Kit

FS.HTCH.001-01

HATCHChecker w/ FLEX2, T-Sonic9 and Accessories



### SDT TRAPChecker Kit

FS.TPC.001-01

TRAPChecker w/ 3.2" RS2N and Accessories



### SDT TIGHTChecker Kit

FS.TIC1.001-01

TIGHTChecker w/ FLEX2, T-Sonic1 and Accessories



### SDT ULTRAChecker Kit

FS.ULC.001-01

ULTRAChecker w/RS2T, ULTRASense and Accessories

# LUBExpert Kits





## LUBExpert Base Kit

FS.LBX.001

LUBExpert w/ UAS 2.0 Single Static, LUBEsense1, Cradle and Accessories





# UAS 4.0 Software and Support



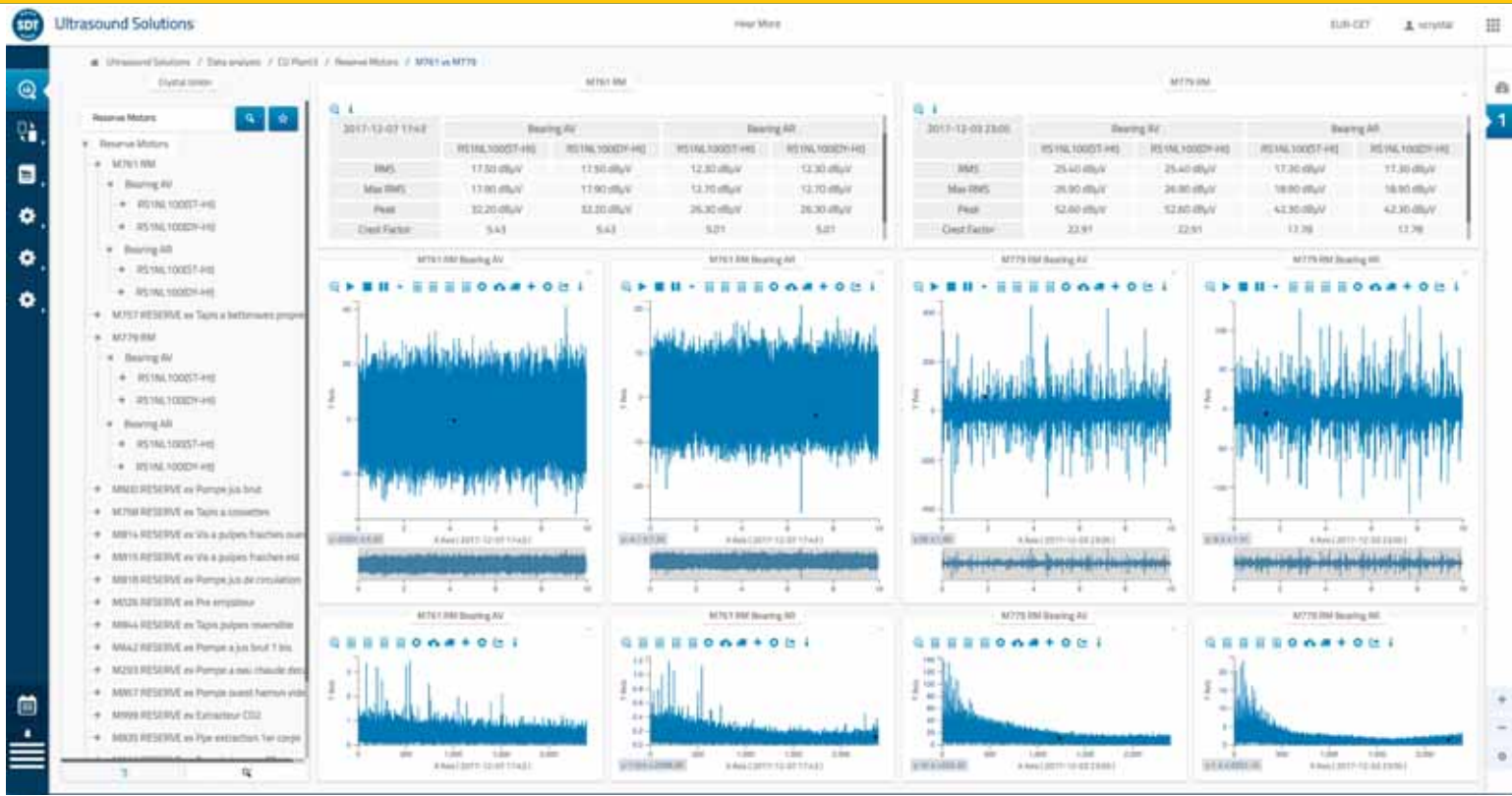
<b>Ultranalysis Suite Lite</b>	FASFTWUASLI00	For SDT340 Only, 1 UAS Lite License
<b>Ultranalysis Suite 4.0 Standalone, Single User License</b>	FASFTWUAS4SA00	For SDT340 Only, 1 UAS 4.0 Standalone License, Local Database, Cannot Upgrade to Server Version, Includes 1st Year of Support and Updates
<b>2 Year Support &amp; Update Plan, Standalone Single User</b>	FASCUAS4SA02	For UAS 4.0 Standalone Only, Must be Purchased with License, Support and Updates for First 2 Years
<b>3 Year Support &amp; Update Plan, Standalone Single User</b>	FASCUAS4SA03	For UAS 4.0 Standalone Only, Must be Purchased with License, Support and Updates for First 3 Years
<b>5 Year Support &amp; Update Plan, Standalone Single User</b>	FASCUAS4SA05	For UAS 4.0 Standalone Only, Must be Purchased with License, Support and Updates for First 5 Years
<b>1 Year Support &amp; Update Plan, Standalone Single User</b>	FASCUAS4SA00	For UAS 4.0 Standalone Only, Can be Purchased Anytime, Software Support and Updates for One Year
<b>Ultranalysis Suite 4.0 Server, 2 User Licenses</b>	FASFTWUAS4SN20	For SDT340 Only, 2 UAS 4.0 Server Licenses, Local Server Database, Includes 1st Year of Software Support and Updates
<b>2 Year Support &amp; Update Plan, Server 2 Users</b>	FASCUAS4SN22	For UAS 4.0 Server 2 Users Only, Must be Purchased with License, Software Support and Updates for First 2 Years
<b>3 Year Support &amp; Update Plan, Server 2 Users</b>	FASCUAS4SN23	For UAS 4.0 Server 2 Users Only, Must be Purchased with License, Software Support and Updates for First 3 Years
<b>5 Year Support &amp; Update Plan, Server 2 Users</b>	FASCUAS4SN25	For UAS 4.0 Server 2 Users Only, Must be Purchased with License, Software Support and Updates for First 5 Years
<b>1 Year Support &amp; Update Plan, Server 2 Users</b>	FASCUAS4SN20	For UAS 4.0 Server 2 Users Only, Can be Purchased Anytime, Software Support and Updates for One Year

<b>Ultranalysis Suite 4.0 Server, Additional User License</b>	FASFTWUAS4SN10	For SDT340 Only, 1 UAS 4.0 Server License, Must Have 2 User License, Includes 1st Year of Software Support and Updates
<b>2 Year Support &amp; Update Plan, Server Additional User</b>	FASCUAS4SN12	For UAS 4.0 Server Additional User Only, Must be Purchased with License, Software Support and Updates for First 2 Years
<b>3 Year Support &amp; Update Plan, Server Additional User</b>	FASCUAS4SN13	For UAS 4.0 Server Additional User Only, Must be Purchased with License, Software Support and Updates for First 3 Years
<b>5 Year Support &amp; Update Plan, Server Additional User</b>	FASCUAS4SN15	For UAS 4.0 Server Additional User Only, Must be Purchased with License, Software Support and Updates for First 5 Years
<b>1 Year Support &amp; Update Plan, Server Additional User</b>	FASCUAS4SN10	For UAS 4.0 Server Additional User Only, Can be Purchased Anytime, Software Support and Updates for One Year
<b>Ultranalysis Suite 4.0 Cloud, Single User License, Per Year</b>	FASFTWUAS4CL00	For SDT340 Only, 1 UAS 4.0 Cloud License, Cloud Based on Remote Server, Includes Software Support and Updates



# UAS4.0

Scalable  
Multi-technology  
Multi-platform



# Sensors





### **RS2T Contact Sensor, Threaded, w/o Cable**

FU.SEN.RS2T.001-01

For SDT340/270/200/Online4US/ULTRAChecker,  
Sensor ID: RS2T, D=M6, Lemo, Req FUCABLSPLE7LE7-  
10, Range: 50m/164.04ft.



### **LUBEsense1 Contact Sensor, Threaded, w/o Cable**

FU.SEN.LUBE.001-01

For SDT340/LUBExpert/SDT270/ULTRA/LUBEChecker,  
Sensor ID: LUBEsense1, D=M6, Lemo, Req  
FUCABLSPLE7LE7-10, Range: 50m/164.04ft.



### **RS2T Contact Sensor, Threaded, IP65 Rated, w/o Cable**

FU.SEN.RS2T.002-01

For SDT340/270/200/Online4US/ULTRAChecker,  
Sensor ID: RS2T, D=M6, Lemo, Req IP65 Rated Cable,  
Range: 50m/164.04ft.



### **LUBEsense1 Contact Sensor, Threaded, IP65 Rated, w/o Cable**

FU.SEN.LUBE.002-01

For SDT340/LUBExpert/SDT270/ULTRA/LUBEChecker,  
Sensor ID: LUBEsense1, D=M6, Lemo, Req IP65 Rated  
Cable, Range: 50m/164.04ft.



### **3.2" RS2N Contact Sensor, Needle, w/o Cable**

FU.SEN.RS2N.001-01

For SDT340/270/200/ULTRA/TRAPChecker, Sensor ID:  
RS2NL100, L=82mm (3.23"), Req FUCABLSPLE7LE7-10



### **10.8" RS2N Contact Sensor, Needle, w/o Cable**

FU.SEN.RS2N.002-01

For SDT340/270/200/ULTRA/TRAPChecker, Sensor ID:  
RS2NL300, L=275mm (10.83"), Req FUCABLSPLE7LE7-10



### **18.5" RS2N Contact Sensor, Needle, w/o Cable**

FU.SEN.RS2N.003-01

For SDT340/270/200/ULTRA/TRAPChecker, Sensor ID:  
RS2NL500, L=470mm (18.50"), Req FUCABLSPLE7LE7-10



### **ULTRASense Airborne Sensor, 16mm Sensor**

FU.SEN.UTS.001-01

For SDT340/270/200/ULTRAChecker, Sensor ID:  
ULTRASense, D=16mm (0.63"), Integrated Connector





**FLEX2 Flexible Airborne Sensor, 16mm  
Tip, w/o Cable**

FS.FLX2.R16.001-01

For SDT340/270/200/ULTRA/TIGHT/HATCHChecker,  
Sensor ID: FlexID2, L=545mm (21.46"), D=16mm  
(0.63"), Req FUCABLSPLE7LE7-10



**ParaDish2 Airborne Parabolic Sensor**

FU.PAR2.005

For SDT340/270/200/ULTRAChecker, Sensor ID:  
ParaDish2, Integral Cable-L7M, Class II Laser



**AC1 Accelerometer, 100 mV/g, Side Exit,  
w/o Cable**

FUSV270-02

For SDT340/270, Sensor ID: Acc100/AC1, D=M6, 2-Pin  
Military Spec, Req FUCABLSPLE7MS2-02



**FLEX2 Flexible Airborne Sensor, 10mm  
Tip, w/o Cable**

FS.FLX2.R10.001-01

For SDT340/270/200/ULTRA/TIGHT/HATCHChecker,  
Sensor ID: FlexID2, L=545mm (21.46"), D=10mm  
(0.39"), Req FUCABLSPLE7LE7-10



**AC1 Accelerometer, 100 mV/g, Top Exit,  
w/o Cable**

FUSV270-01

For SDT340/270, Sensor ID: Acc100/AC1, D=M6, 2-Pin  
Military Spec, Req FUCABLSPLE7MS2-02



# Transmitters





### **T-Sonic1 Ultrasound Transmitter**

FU.TSO1.001

Frequency Range 39.6 and 39.9 kHz, Sound Level 85 to 105 dB SPL, Req. 2-AA Batteries



### **External Open Transducer, 16mm Tip**

FUSEUSTO16/J3M

For FU.TSO1.001, Jack 3.5mm Mono, Cable 2.5m



### **T-Sonic9 Ultrasound Transmitter Kit**

FS.TSO9.001

9 Outputs, Frequency Range 39.9 and 40.1 kHz, Sound Level 84 to 113 dB SPL, Req. 6-AA Batteries w/ Accessories



# Cables







#### **Cable For Sensor, Lemo to Lemo, Coiled**

FUCABLSPLE7LE7-10

For  
SDT340/270/200/LUBExpert/TRAP/LUBE/TIGHTChecker  
, Cable 7-Wire (42982), Blue, L7M-L7M, L=600-1800mm



#### **Cable For Generic ICP Accelerometer, Lemo to BNC, Coiled**

FUCABLSPLE7BNC18-03

For SDT340/270, Cable Coaxial (RG174), L7M-BNCM,  
L=600-1800mm (23.6"-70.9")



#### **Cable for Flexible Sensor, Lemo to BNC, Coiled, Long**

FUCABLSPLE7BNC22

For SDT270/200/170, Cable Coaxial (RG174), L7M-  
BNCM, L=1000-2200mm (39.4"-86.6")



#### **Cable For Contact Sensor, Lemo to Lemo, 10ft./3.05m**

FUCABLMPL7LE703-01

For SDT340/270/200/LUBExpert, Cable 7-Wire (32377),  
Blue, L7M-L7M



#### **Cable For Accelerometer, Lemo to MS2, Coiled**

FUCABLSPLE7MS2-02

For SDT340/270, Cable MS2 (CC-A2A-175), L7M-MS2,  
Straight, L=600-1800mm (23.6"-70.9")



#### **Cable for Flexible Sensor, Lemo to BNC, Coiled, Short**

FUCABLSPLE7BNC18

For SDT270/200/170, Cable Coaxial (RG174), L7M-  
BNCM, L=600-1800mm (23.62"-70.87")



#### **Cable for Contact Sensor, Lemo to Lemo, Coiled, SDT170**

FUCABLSPLE7LE7-5

For SDT170 Only, Cable Coaxial (RG174), L7M-L7M,  
Straight, L=600-1800mm (23.62"-70.87")



#### **Cable For Contact Sensor, Lemo to Lemo, 20ft./6.10m**

FUCABLMPL7LE706-01

For SDT340/270/200/LUBExpert, Cable 7-Wire (32377),  
Blue, L7M-L7M



**Cable For Contact Sensor, Lemo to Lemo,  
30ft./9.15m**

FUCABLMPL7LE709-01

For SDT340/270/200/LUBExpert, Cable 7-Wire (32377),  
Blue, L7M-L7M



**Cable For Contact Sensor, Lemo to Lemo,  
40ft./12.20m**

FUCABLMPL7LE712-01

For SDT340/270/200/LUBExpert, Cable 7-Wire (32377),  
Blue, L7M-L7M



**Cable For Contact Sensor, Lemo to Lemo,  
50ft./15.25m**

FUCABLMPL7LE715-01

For SDT340/270/200/LUBExpert, Cable 7-Wire (32377),  
Blue, L7M-L7M



**Cable For Contact Sensor, Lemo to Lemo,  
Custom Length (Max=50ft./15.25m)**

FUCABLMPL7LE7XX-01

For SDT340/270/200/LUBExpert, Cable 7-Wire (32377),  
Blue, L7M-L7M, Custom Length=XXft./XXm



**Cable For Accelerometer, MS2 to Lemo,  
Custom Length (Max=65ft./19.81m)**

FUCABLCOLE7MS2-XX

For SDT340/270, Cable (CC-A2A-175), L7M-MS2,  
Custom Length=XXft./XXm



**Cable For Generic ICP Accelerometer, BNC  
to Lemo, Custom Length  
(Max=65ft./19.81m)**

FUCABLCOLE7BNC-XX

For SDT340/270, Cable Coaxial (RG174), L7M-BNCM,  
Custom Length=XXft./XXm



**Cable For Junction Box, Lemo to Lemo,  
10ft./3.05m**

FU.RMB.CABL.000-03

For SDT340/270/200/LUBExpert, Cable 7-Wire (32377),  
Blue, L7M-L7F, For Use with Junction Box



**Cable For Junction Box, Lemo to Lemo,  
25ft./7.60m**

FU.RMB.CABL.000-07

For SDT340/270/200/LUBExpert, Cable 7-Wire (32377),  
Blue, L7M-L7F, For Use with Junction Box



**Cable For Junction Box, Lemo to Lemo,  
45ft./13.70m**

FU.RMB.CABL.000-13

For SDT340/270/200/LUBExpert, Cable 7-Wire (32377), Blue, L7M-L7F, For Use with Junction Box



**Cable For Junction Box, Lemo to Lemo,  
Custom Length (Max=50ft./15.25m)**

FU.RMB.CABL.000-XX

For SDT340/270/200/LUBExpert, Cable 7-Wire (32377), Blue, L7M-L7F, For Use with Junction Box, Custom Length=XXft./XXm



**Cable For Junction Box, Lemo to Lemo,  
Custom Length (50ft./15.25m-82ft./25m)**

FU.RMB.CABL.005-XX

For SDT340/270/200/LUBExpert, Cable 7-Wire (32377), Blue, L7M-L7F, For Use with Junction Box, Custom Length=XXft./XXm



**Cable For Junction Box, MS2 to Lemo,  
Custom Length (Max=65ft./19.81m)**

FU.RMB.CABL.001-XX

For SDT340/270, Cable (CC-A2A-175), MS2-L7F, Custom Length=XXft./XXm



**Cable For Junction Box, BNC to Lemo,  
Custom Length (Max=65ft./19.81m)**

FU.RMB.CABL.004-XX

For SDT340/270, Cable Coaxial (RG174), BNCM-L7F, For Use with Junction Box, Custom Length=XXft./XXm



**Cable For Sensor, Lemo to Lemo, Coiled,  
IP65 Rated**

FUCABLSPLE7LE7-11

For SDT340/270/200/LUBExpert, IP Rated Lemo Connectors, Cable 7-Wire (42982), Blue, L7M-L7M, L=600-1800mm (23.62"-70.87")



**Cable For Contact Sensor, Lemo to Lemo,  
IP65 Rated, Custom Length  
(Max=50ft./15.25m)**

FUCABLMPL7LE7XX-03

For SDT340/270/200/LUBExpert, IP Rated Lemo Connectors, Cable 7-Wire (32377), Blue, L7M-L7M, L=XXft./XXm



**Cable For Junction Box, Lemo to Lemo,  
IP65 Rated, Custom Length  
(Max=50ft./15.25m)**

FU.RMB.CABL.010-XX

For SDT340/270/200/LUBExpert, IP Rated Lemo Connectors, Cable 7-Wire (32377), Blue, L7M-L7M, L=XXft./XXm

# Training



<b>ASNT Level 1 Public Certification Training</b>	TR-CERT1PUB	Individual Registration, Includes Exam and Certificate
<b>ASNT Level 1 Onsite Certification Training</b>	TR-CERT1OS	Max 12 Students, Expenses Additional, Includes Exam and Certificate
<b>ASNT Level 2 Public Certification Training</b>	TR-CERT2PUB	Individual Registration, Includes Exam and Certificate
<b>ASNT Level 2 Onsite Certification Training</b>	TR-CERT2OS	Max 12 Students, Expenses Additional, Includes Exam and Certificate
<b>ISO CAT1 Ultrasound Public Training Course and Exam</b>	TR-CAT1-UT	Individual Registration
<b>ISO CAT1 Ultrasound Onsite Training Course, Exam Addit.</b>	TR-CAT1-UT-OS	Expenses Additional, TR-CAT1-UT-EX Must Be Purchased For Each Attendee
<b>ISO CAT1 Ultrasound Training Exam Only</b>	TR-CAT1-UT-EX	Individual Registration
<b>ISO CAT1 Vibration Public Training Course and Exam</b>	TR-CAT1-VIB	Individual Registration
<b>ISO CAT2 Vibration Public Training Course and Exam</b>	TR-CAT2-VIB	Individual Registration
<b>LUBExpert One to One Remote Mentoring, Milestone #1</b>	TR-LBX-RM-1	Alignment & KPI's, 5 hours, Web Based Training
<b>LUBExpert One to One Remote Mentoring, Milestone #2</b>	TR-LBX-RM-2	Database, Review, Data Collection, Mentoring, 5 Hours, Web Based Training



<b>LUBExpert One to One Remote Mentoring, Complete w/ Cert</b>	TR-LBX-RM-C	Milestone #1: Alignment & KPI's, Milestone #2: Database, Review, Data Collection, Mentoring, 10 Hours, Web Based Training
<b>2-Day Onsite Implementation</b>	TR-IMP2DOS	United States & Canada Only, Additional Cost Outside US & CAN
<b>3-Day Onsite Implementation</b>	TR-IMP3DOS	United States & Canada Only, Additional Cost Outside US & CAN
<b>4-Day Onsite Implementation</b>	TR-IMP4DOS	United States & Canada Only, Additional Cost Outside US & CAN
<b>5-Day Onsite Implementation</b>	TR-IMP5DOS	United States & Canada Only, Additional Cost Outside US & CAN
<b>4-Day Onsite Implementation, Instructor Tom Murphy</b>	TR-IMP4DOS.TJM	United States & Canada Only, Additional Cost Outside US & CAN
<b>5-Day Onsite Implementation, Instructor Tom Murphy</b>	TR-IMP5DOS.TJM	United States & Canada Only, Additional Cost Outside US & CAN
<b>SDT Consultation Services</b>	SV.001	Additional SDT Services, Per Day



# Calibrations

**LIFETIME  
WARRANTY**





### **Calibration, Inspection & Update, SDT340 Device**

AC.R340

For SDT340 Device Only



### **Lifetime Warranty Reactivation, SDT340**

AC2.R340

For SDT340, Device Must Pass Inspection



### **Calibration, Inspection & Update, LUBExpert Device**

AC.LBXD

For LUBExpert Device Only



### **Lifetime Warranty Reactivation, LUBExpert**

AC2.LBXD

For LUBExpert, Device Must Pass Inspection



### **Calibration, Inspection & Update, Checker Range Device**

AC.CHKD

For LEAK/TRAP/LUBE/TIGHT/HATCH Checker Device Only



### **Lifetime Warranty Reactivation, Checkers Range**

AC2.CHKD

For LEAK/TRAP/LUBE/TIGHT/HATCH Checker, Device Must Pass Inspection



### **Calibration, Inspection & Update, SDT270 Device**

AC.R270

For SDT270 Device Only



### **Lifetime Warranty Reactivation, SDT270**

AC2.R270

For SDT270, Device Must Pass Inspection



### **Calibration, Inspection & Update, SDT200 Device**

AC.R200

For SDT200 Device Only



### **Lifetime Warranty Reactivation, SDT200**

AC2.R200

For SDT200, Device Must Pass Inspection



### **Calibration and Inspection, T-Sonic1 Ultrasound Transmitter**

AC.TSO1

For T-Sonic1 Only



### **Calibration and Inspection, T-Sonic9 Ultrasound Transmitter**

AC.TSO9

For T-Sonic9 Only





# Accessories





### **Battery Pack, SDT340**

FU.R340.BPS-01

For SDT340 Only, NiMh 4.8V - 3600 mAh



### **Battery Charging Station w/o Power Supply**

FU.R340.BDS-01

For SDT340 Only



### **Power Supply For Battery Charging Station w/ Adapters**

FU.R340.PS0-01

For SDT340 Only, w/ US-EU-UK-AU Adapters, Type A-C-G-I



### **Battery Charging Station with Power Supply and Adapters**

FU.R340.BDPS-01

For SDT340 Only, w/ US-EU-UK-AU Adapters, Type A-C-G-I, Assembly of FU.R340.BDS-01 + FU.R340.PS0-01



### **USB 3.1 Cable**

SICABUSB-12-01

For SDT340 Only, USB Type C Male - USB Type A Male, 1m (39.4")



### **SDT USB Memory Drive**

DMSDTNAUSB

For SDT340/270/200/SDT8/LUBExpert, User's Manual and Application Software on USB Key



### **Shoulder Strap**

FAHOLSAC-01

For SDT340/270/200/170/SDT8/LUBExpert/ T-Sonic9, Attaches to Bottom of Device



### **Leather Belt Holder w/ Clip**

FAHOLSAC-02

For SDT340/270/200/LUBExpert, Attaches to Rear of Device



### Reflective Label for Tachometer

FARPMNLABEL

For SDT340/270, Pack of 4 Labels 20 x 50mm



### Acoustic Lube Adapter

FUSEACLUBE-03-A

For RS2T/LUBEsense1/RS1T, Zerk Grease Nipple, Thread D=M6



### Mounting Pads, Pack of 10

FUSEACMP1

For RS2T/AC1/LUBEsense1/RS1T, D=24mm x 10mm (0.94" x 0.39"), Thread D=M6, Pkg Qty 10



### Push-On Lube Adapter

FUSEACLUBE-05

For RS2T/LUBEsense1/RS1T, Button Head 1/8" Standard Push-On Lubrication Fitting



### Magnetic Base, Multi Surface

FUSEACMAG-02

For RS2T/AC1/LUBEsense1/RS1T, D=30mm x 23mm (1.18" x 0.91"), Thread D=M6



### Magnetic Base, Flat Surface

FUSEACMAG-01

For RS2T/AC1/LUBEsense1/RS1T, D=24mm x 14mm (0.94" x 0.55"), Thread D=M6



### Pull-On Lube Adapter

FUSEACLUBE-04

For RS2T/LUBEsense1/RS1T, Button Head 1/8" Standard Pull-On Lubrication Fitting



### Headphones, Neckband

FUHDPH-1

For SDT340/270/200/170/FLEX.US/LUBExpert/Checker Range, Headset For Use w/ Hardhat, 1/4" (6.35mm) Jack



### Headphones, Overhead, Bluetooth

FUHDPH-8

For SDT340 Only, Headset For Use w/o Hardhat



### Headphone Hygiene Kit

SIHEADFELTHY79

For FUHDPH-1/2/7/8, Includes Earseals, Sealing Rings and Foam Inserts



### Y-Connector

FUCOADJ6Y

For FUHDPH-1/2/4/7, Splits Output to 2 Headphones, 1/4" (6.35mm) Jack



### 10mm Tip For Airborne Sensor

FA.FLX2.R10.001

For FLEX2/LEAKChecker, D=10mm (0.39")



### Headphones and Hardhat

FUHDPHSET-7

For SDT340/270/200/170/FLEX.US/LUBExpert/Checker Range, Headset Mounted on Hardhat, 1/4" (6.35mm) Jack



### Loudspeaker

FUHDPH-4

For SDT340/270/200/170/FLEX.US/LUBExpert/Checker Range, 1/4" (6.35mm) Jack



### 16mm Tip For Airborne Sensor

FA.FLX2.R16.001

For FLEX2/LEAKChecker, D=16mm (0.63")



### Rubber Tip

SIRUBSENS18MMSI

For FA.FLX2.R16.001-01/FAFLEXSENS16RA/SDT270/200(Req. SAMR270PISH-02), D=16mm (0.63")





### Telescopic Extension For Airborne and Contact Sensors

FU.TEP.001-01

For FLEX2/RS2T/RS2N/LUBEsense1, Fibreglass Telescopic Extension, RS2 Sensors Req. Adapter, L=380mm-1000mm (14.96"-39.37")



### Contact Sensor Adapter For Telescopic Extension

FU.TEP.ACC01-01

For RS2T/RS2N/LUBEsense1, Attaches to Telescopic Extension, L=100mm (3.94")



### Remote for T-Sonic9, Bluetooth

FU.TSO9.002

For T-Sonic9 Only



### 12.8" Needle Assembly Extension

SA.CP2.MMF.003-B

For RS2T/LUBEsense1/RS1T, L=325mm (12.8"), Thread D=M6, See Product Disclaimer



### Extension Pole For Airborne Sensors

FA.FLX2.HND.003-01

For FLEX2/FLEX1, Metal Extension w/ Rubber Handle, L=400mm (15.75")



### Replacement Handle For FLEX2 Flexible Airborne Sensor

FA.FLX2.HND.001-01

For FLEX2, Rubber Handle, L=100mm (3.94")



### 5.24" Needle Assembly Extension

SA.CP2.MMF.002-B

For RS2T/LUBEsense1/RS1T, L=133mm (5.24"), Thread D=M6, See Product Disclaimer



### 20.55" Needle Assembly Extension

SA.CP2.MMF.004-B

For RS2T/LUBEsense1/RS1T, L=522mm (20.55"), Thread D=M6, See Product Disclaimer



#### 4 Channel Junction Box, Lemo, ABS

FU.RMB.004

For 1-4 RS2T/AC1/RS1T, Lemo Connectors, IP 65 Rated



#### 10 Channel Junction Box, Lemo, ABS

FU.RMB.001

For 1-10 RS2T/AC1/RS1T, Lemo Connectors, IP 65 Rated



#### 12 Channel Junction Box, Lemo, Stainless Steel

FU.RMB.003

For 1-12 RS2T/AC1/RS1T, Lemo Connectors, IP 66 Rated



#### SDT915 Custom Carrying Case

FU.CA915.CBOX.001-01

NK-7 Resin Exterior, PowerClaw Latching System, IP67 Rated, Lockable, L15.8" x W12.1" x H6.8" (L401mm x W307mm x H173mm)



#### SDT930 Custom Carrying Case

FU.CA930.CBOX.001-01

NK-7 Resin Exterior, PowerClaw Latching System, IP67 Rated, Lockable, L19.8" x W16.0" x H7.6" (L503mm x W406mm x H193mm)



#### SDT945 Custom Carrying Case

FU.CA945.CBOX.001-01

NK-7 Resin Exterior, PowerClaw Latching System, IP67 Rated, Lockable, L25.1" x W19.9" x H8.8" (L638mm x W505mm x H224mm)



#### Upgrade SDT930 to SDT945 Custom Carrying Case

FU.UP945.CBOX.001-01

NK-7 Resin Exterior, PowerClaw Latching System, IP67 Rated, Lockable, L25.1" x W19.9" x H8.8" (L638mm x W505mm x H224mm)



#### LUBExpert Standard Device w/ Battery

FS.LBX.000

Receiver w/ Battery, Temperature Key Enabled



### USB Cable

SICABUSBAUSBMM

For SDT270/200/LUBExpert/Checker Range/T-Sonic9/T-Sonic1, USB 2.0 Cable, USB Type B5 Mini, 1.8m (70.9")



### LUBExpert Grease Gun Mounting Cradle

FU.LBX.DVC.001-01

For SDT270/200/LUBExpert, Attaches to Rear of Device w/ Bracket



### LUBExpert Custom Carrying Case

FU.LBX.CBOX.001-01

T6 Evolution Blue Plastic Case w/ Slide Latches



### SDT Universal Battery Charger w/o Cord

FUPWSPUN-01

For SDT270/200/170/LUBExpert, Input 100-240VAC/50-60Hz/250mA/25VA



### UK Power Cord For Universal Battery Charger

FUCABLPWRC7US-01

For FUPWSPUN-01, Type A-C7 Power Cable, 5.9ft./1.8m



### EU Power Cord For Universal Battery Charger

FUCABLPWRC7EU-01

For FUPWSPUN-01, Type C-C7 Power Cable, 5.9ft./1.8m



### AU Power Cord For Universal Battery Charger

FUCABLPWRC7UK-01

For FUPWSPUN-01, Type G-C7 Power Cable, 5.9ft./1.8m



### AU Power Cord For Universal Battery Charger

FUCABLPWRC7AU-01

For FUPWSPUN-01, Type I-C7 Power Cable, 5.9ft./1.8m



### Checker Grease Gun Mounting Cradle

FU.LBC.DVC.001-02

For ULTRA/LUBEChecker, Attaches to Rear of Device w/ Bracket and Strap



### Checker Magnetic Mount

FU.LBC.DVC.002-01

For ULTRA/LUBEChecker, Attaches to Rear of Device w/ Multi-Magnet



### LEAKChecker Custom End User Carrying Case, Green Latches

FU.LKC.CBOX.001-01

T6 Evolution Blue Plastic Case w/ Slide Latches



### TRAPChecker Custom End User Carrying Case, Blue Latches

FU.TPC.CBOX.001-01

T6 Evolution Blue Plastic Case w/ Slide Latches



### LUBEChecker Custom End User Carrying Case, Yellow Latches

FU.LBC.CBOX.001-01

T6 Evolution Blue Plastic Case w/ Slide Latches



### TIGHTChecker Custom End User Carrying Case, Red Latches

FU.TIC.CBOX.001-01

T6 Evolution Blue Plastic Case w/ Slide Latches



### HATCHChecker Custom End User Carrying Case, Black Latches

FU.HTC.CBOX.001-01

T6 Evolution Blue Plastic Case w/ Slide Latches



### Checker Range Custom Demo Carrying Case, White Latches

FU.CHK.CBOX.001-01

T6 Evolution Blue Plastic Case w/ Slide Latches

### LEAKReporter Custom Report Pack of 1



FASFTWLRP001

Custom Branded SDT LEAKReporter Report, 1 Report

### LEAKReporter Custom Report Pack of 5



FASFTWLRP005

Custom Branded SDT LEAKReporter Report, 5 Reports

### LEAKReporter Custom Report Pack of 10



FASFTWLRP0010

Custom Branded SDT LEAKReporter Report, 10 Reports

### LEAKReporter Custom Report Pack of 50



FASFTWLRP0050

Custom Branded SDT LEAKReporter Report, 50 Reports

### LEAKReporter Custom Report Pack of 100



FASFTWLRP00100

Custom Branded SDT LEAKReporter Report, 100 Reports



### SDT Leak Tags, Set of 250

FULEAKSET1

Individually Numbered Leak Tags 250 pcs.



### LUBExpert Multi-Purpose Gloves, 12 Pack

FS.LTX.001

LUBExpert Branded Nitrile Grip Coated Gloves, One Size Fits All





# SdT270/200 Configured Kits





### **SDT200SD Base Kit**

FSLR200SD-BASE

SDT200SD w/ DataDump, RS2T and Accessories



### **SDT270SD Base Kit**

FSLR270SD-BASE

SDT270SD w/ DataDump, RS2T and Accessories



### **SDT270SU Trend Kit**

FSLR270SU-TREND

SDT270SU w/ UAS 2.0 Master Static, RS2T, FLEX2, EDS, T-Sonic1, AC1 and Accessories



### **SHERLOG MATE Kit**

SHERLOG MATE

SDT200SD w/ DataDump, T-Sonic9, FLEX2 and Accessories



### **SDT200SD Surveyor Kit**

FSLR200SD-ELS

SDT200SD w/ DataDump, FLEX2, EDS and Accessories



### **SDT270SD Surveyor Kit**

FSLR270SD-ELS

SDT270SD w/ DataDump, FLEX2, EDS and Accessories



### **SDT270DU Pro Kit**

FSLR270DU-PRO

SDT270DU w/ UAS 2.0 Master Dynamic, RS2T, FLEX2, EDS, T-Sonic1, AC1 and Accessories



### **SHERLOG MASTER Kit**

SHERLOG MASTER

SDT270SD w/ Sherlog Reporter, T-Sonic9, FLEX2 and Accessories



### **SDT200ASD Base Kit ATEX**

FSLR200ASD-BASE

SDT200ASD w/ DataDump, RS1T and Accessories



### **SDT200ASD Surveyor Kit ATEX**

FSLR200ASD-ELS

SDT200ASD w/ DataDump, Flexible, EDS and Accessories



### **SDT270ASD Base Kit ATEX**

FSLR270ASD-BASE

SDT270ASD w/ DataDump, RS1T and Accessories



### **SDT270ASD Surveyor Kit ATEX**

FSLR270ASD-ELS

SDT270ASD w/ DataDump, Flexible, EDS and Accessories



### **SDT270ASU Trend Kit ATEX**

FSLR270ASU-TREND

SDT270ASU w/ UAS 2.0 Master Static, RS1T, T-Sonic1, Flexible, EDS and Accessories



### **SDT270ADU Pro Kit ATEX**

FSLR270ADU-PRO

SDT270ADU w/ UAS 2.0 Master Dynamic, RS1T, Flexible, EDS, T-Sonic1, and Accessories



### **SDT270ASB Tank Test Kit ATEX**

FSLR270ASB-TT

SDT270ASB w/ TankTest Reporter, Camlock, Tube, Pipes, Flexible and Accessories







# SDT270 Upgrades

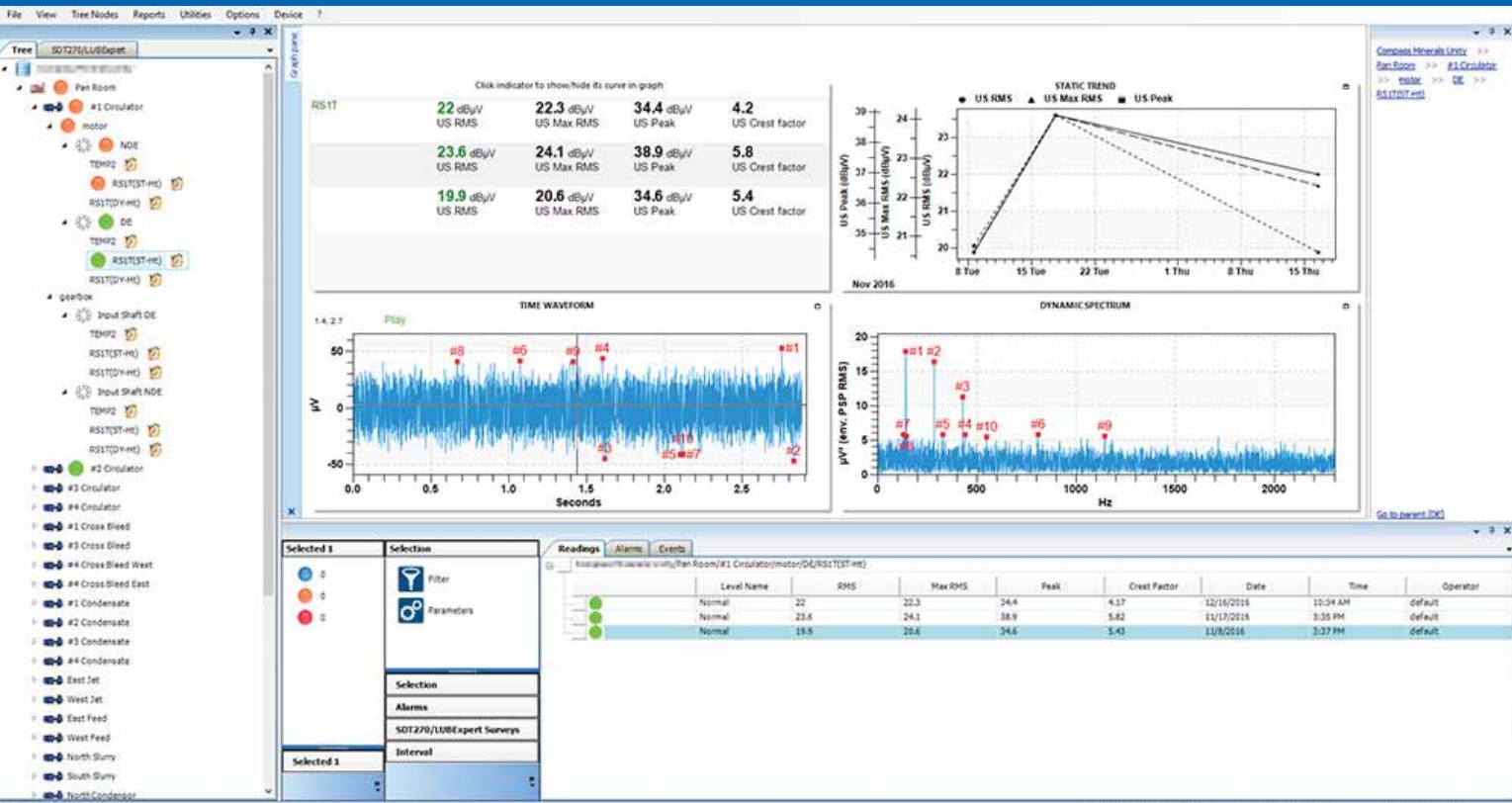


<b>SU Upgrade Pack, Platform and Master Site Licence</b>	FA.UKIT.R270.SD-SU	For SDT270 Only, Upgrade SDT270SD to SDT270SU, 2 UAS Networked Licences, Static
<b>DU Upgrade Pack, Platform and Master Site Licence</b>	FA.UKIT.R270.SD-DU	For SDT270 Only, Upgrade SDT270SD to SDT270DU, 2 UAS Networked Licences, Dynamic
<b>Platform Upgrade, SB to SD w/ DataDump Licence</b>	FAUPGRKEY270SD	For SDT270 Only, Upgrade SDT270SB to SDT270SD, 1 Installation DataDump Licence
<b>Platform Upgrade, SB to SU</b>	FAUPGRKEY270SU	For SDT270 Only, Upgrade SDT270SB to SDT270SU
<b>Platform Upgrade, SB to DU</b>	FAUPGRKEY270DU	For SDT270 Only, Upgrade SDT270SB to SDT270DU
<b>Platform Upgrade, SD to SU</b>	FAUPGRKEY270SD-SU	For SDT270 Only, Upgrade SDT270SD to SDT270SU
<b>Platform Upgrade, SD to DU</b>	FAUPGRKEY270SD-DU	For SDT270 Only, Upgrade SDT270SD to SDT270DU
<b>Platform Upgrade, SU to DU</b>	FAUPGRKEY270SU-DU	For SDT270 Only, Upgrade SDT270SU to SDT270DU
<b>Platform Upgrade, SD to DD</b>	FAUPGRKEY270SD-DD	For SDT270 Only, Upgrade SDT270SD to SDT270DD, 1 Installation DataDump Licence
<b>Platform Upgrade, SD to DW</b>	FAUPGRKEY270SD-DW	For SDT270 Only, Upgrade SDT270SD to SDT270DW Req. DMSI MAINTelligence Interface for SDT270DW Driver
<b>Key Activation, Temperature</b>	FAUPGRKEY270T	For SDT270/200/LUBExpert, Sensor ID: TEMP2

<b>Key Activation, Tachometer</b>	FAUPGRKEY270R	For SDT270 Only, Sensor ID: RPM270
<b>Key Activation, Vibration</b>	FAUPGRKEY270A	For SDT270 Only, Sensor ID: AC1, No ATEX
<b>Key Activation, Sherlog w/ Sherlog Reporter Licence</b>	FAUPGRKEY270SH	For SDT270 Only, 1 Installation Reporter Licence
<b>Key Activation, LUBExpert</b>	FAUPGRKEY270L	For LUBExpert/SDT270DU/SDT270SU, Sensor ID: LUBEsense1
<b>LUBExpert Upgrade Kit for SDT270DU/SU-MK2</b>	FA.UKIT.R270.LBX	For SDT270DU/SDT270SU, NE280 xxx xxx, LUBExpert Key, LUBEsense1, Cradle and Accessories
<b>Upgrade SDT270 MK1 &gt; SDT270 MK2</b>	FA.UKIT.R270.K1K2	For SDT270 Only, Including Upload of Existing Keys MK1 w/ Calibration, NE270 xxx xxx w/ MK-1 Type PCB



# UAS 2.0 Software





<b>Ultranalysis Suite 2.0 Master Site Licence, Dynamic Network</b>	FASFTWUAS2DN00	For SDT270 Only, 2 UAS 2.0 Installation Networked Licences, Dynamic
<b>Ultranalysis Suite 2.0 Single Site Licence, Dynamic Network</b>	FASFTWUAS2DN01	For SDT270 Only, 1 UAS 2.0 Installation Network Licence, Dynamic, Must Have Master Site Dynamic
<b>Ultranalysis Suite 2.0 Master Site Licence, Static Network</b>	FASFTWUAS2SN00	For SDT270/LUBExpert, 2 UAS 2.0 Installation Networked Licences, Static
<b>Ultranalysis Suite 2.0 Single Site Licence, Static Network</b>	FASFTWUAS2SN01	For SDT270/LUBExpert, 1 UAS 2.0 Installation Networked Licence, Static, Must Have Master Site Static
<b>Upgrade Ultranalysis Suite 2.0 Static to Dynamic Master Ntwk.</b>	FASFTWUAS2UPSN2DN01	For SDT270 Only, Upgrade UAS 2.0 Master Site Static to UAS 2.0 Master Site Dynamic
<b>Upgrade Ultranalysis Suite 2.0 Static to Dynamic Single Ntwk.</b>	FASFTWUAS2UPS2DN01	For SDT270 Only, Upgrade UAS 2.0 Single Site Static to UAS 2.0 Single Site Dynamic, Must Have Master Site Dynamic
<b>Ultranalysis Suite 2.0 Single LUBExpert Licence, Static</b>	FASFTWUAS2S01	For LUBExpert Only, 1 UAS 2.0 Installation Non-Networked Licence, Static

# SdT270/200/170/ATEX Sensors





### **RS1T Contact Sensor, Threaded, w/o Cable**

FUSCRS3-01

For SDT270/200/170, Sensor ID: RS1T, D=M6, Lemo, Req FUCABLSPLE7LE7-3/8/5



### **3.2" RS1N Contact Sensor, Needle, w/o Cable**

FUSOND270-01

For SDT270/200/170, Sensor ID: RS1NL100, L=82mm (3.23"), Lemo, Req FUCABLSPLE7LE7-3/8/5



### **10.8" RS1N Contact Sensor, Needle, w/o Cable**

FUSOND270-02

For SDT270/200/170, Sensor ID: RS1NL300, L=275mm (10.83"), Lemo, Req FUCABLSPLE7LE7-3/8/5



### **18.5" RS1N Contact Sensor, Needle, w/o Cable**

FUSOND270-03

For SDT270/200/170, Sensor ID: RS1NL500, L=470mm (18.50"), Lemo, Req FUCABLSPLE7LE7-3/8/5



### **RS1T Contact Sensor, Threaded, w/o Cable, ATEX**

FUSCRS3A-01

For SDT270/200, Sensor ID: RS1T, D=M6, Lemo, Req FUCABLSPLE7LE7-10



### **3.2" RS1N Contact Sensor, Needle, w/o Cable, ATEX**

FUSOND270A-01

For SDT270/200, Sensor ID: RS1NL100, L=82mm (3.23"), Lemo, Req FUCABLSPLE7LE7-10



### **10.8" RS1N Contact Sensor, Needle, w/o Cable, ATEX**

FUSOND270A-02

For SDT270/200, Sensor ID: RS1NL300, L=275mm (10.83"), Lemo, Req FUCABLSPLE7LE7-10



### **18.5" RS1N Contact Sensor, Needle, w/o Cable, ATEX**

FUSOND270A-03

For SDT270/200, Sensor ID: RS1NL500, L=470mm (18.50"), Lemo, Req FUCABLSPLE7LE7-10



**21.6" Flexible Airborne Sensor, 16mm Tip,  
w/o Cable, w/ Extension, ATEX**

FUFLEXEX1

For SDT270/200, Sensor ID: ExtUS1, L=550mm (21.65"),  
D=16mm (0.63"), BNC, Req FUCABLSPLE7BNC22



**Extended Distance Sensor**

FUSEACEDS-02

For SDT270/200, Sensor ID: IntUS1, EDS Cone for  
Internal US Sensor



**21.6" Flexible Airborne Sensor, 10mm Tip  
w/o Cable, w/ Extension, ATEX**

FUFLEXEX2

For SDT270/200, Sensor ID: ExtUS1, L=550mm (21.65"),  
D=10mm (0.39"), BNC, Req FUCABLSPLE7BNC22



**ParaDish2 Airborne Parabolic Sensor,  
ATEX**

FU.PAR2.006

For SDT270/200, Sensor ID: ParaDish2, Integral Cable-  
L7M, Class II Laser, ATEX



Ext. 105 600000  
UTR  
32.5  $\Omega$   $\Omega$   
Min 32.3 Max 33.7  
Hold  
Sensor Static

SDT

SDT270



# SDT270/200/170 Accessories





### **SDT200SD Standard Device w/ Battery**

FSR200SD-00

SD Receiver Unit w/ Battery, No Keys Enabled



### **SDT200ASD ATEX Standard Device w/ Battery**

FSR200ASD-00

SD Receiver Unit w/ Battery, No Keys Enabled



### **Sensor Cap**

SAMR270CSH-02

For SDT270/200, Protector Cap for Internal US Sensor



### **Ring Sensor Holder**

SAMR270RSH-01

For SDT270/200, Thread Protector for Internal US Sensor



### **SDT270SD Standard Device w/ Battery, Holster**

FSR270SD-00

SD Receiver Unit w/ Blue Holster and Battery, No Keys Enabled



### **SDT270ASD ATEX Standard Device w/ Battery, Holster**

FSR270ASD-00

SD Receiver Unit w/ Blue Holster and Battery, No Keys Enabled



### **Precision Indicator**

SAMR270PISH-02

For SDT270/200, Focusing Attachment for Internal US Sensor



### **Headphones, Neckband, ATEX**

FUHDPH-7

For SDT270/200 ATEX, Headset for Use w/ Hardhat, 1/4" (6.35mm) Jack



### Headphones, Over Head

FUHDPH-2

For SDT270/200/170/FLEX.US/LUBExpert/Checker Range, Headset for Use w/o Hardhat, 1/4" (6.35mm) Jack



### Battery Adapter Charging Tray, SDT8

FUBATTAD8

For FUBATTT008



### Battery Charger, 200mW Bionic, US w/ EU Adapter

FUPWSP150/USEU-02

For FUT200B, Type A & C Power Cable, Input 100-240VAC/50-60Hz/250mA/25VA



### Tip for Flexible Sensor, 16mm, ATEX

FAFLEXSENS16RA

For FUFLEXEX1 Flexible Airborne Sensor, D=16mm (0.63")



### Battery Charger, SDT8, US w/ EU Adapter

FUPWSP8/US-EU

For SDT8, Type A & C Power Cable, Input 100-240VAC/50-60Hz/250mA/25VA



### Battery, SDT8

FUBATTT008

For SDT8, Rechargeable Lead-Acid Battery, 12V/1.2Ah



### AU Power Adapter for Bionic Battery Charger

SIPSSDT150UACC-03

For FUT200B, Type I Power Adapter, Input 100-240VAC/50-60Hz/250mA/25VA



### Tip for Flexible Sensor, 10mm, ATEX

FAFLEXSENS10RA

For FUFLEXEX2 Flexible Airborne Sensor, D=10mm (0.39")



### **SDT Device Holster**

FU.270.HST.001-01

For SDT270/200/LUBExpert, Heavy Duty Nylon Casing w/ Vinyl Front, Reflective Stripping, Lemo Caps on Top, Magnets on Rear



### **SDT Device Holster and Carrier**

FS.270.XHC.001-01

For SDT270/200/LUBExpert, SDT Device Carrier w/ Device Holster



### **SDT Device Carrier**

FU.270.DVC.001-01

For SDT270/200/LUBExpert, Heavy Duty Nylon, Req. Device Holster



### **Blue Rubber Holster, SDT270**

FAHOLS270-01

For SDT270 Only



### **Blue Rubber Holster, SDT270, ATEX**

FAHOLS270-02

For SDT270 ATEX Only



### **Battery, SDT170**

FUBATTR170

For SDT170 Only, NiMH 7.2V/1600mAh



### **Rubber Holster, Blue, SDT170**

FAHOLS170-01

For SDT170 Only



### **Rubber Holster, Sherlog Red, SDT170**

FAHOLS170-02

For SDT170 Only





# SDT Sales & Support



*Europe & Africa:*

**SDT International SA/NV**

Bd. de L'Humanité 415  
B-1190 Brussels, Belgium

☎ +32 2 332 32 25

✉ [info@sdtultrasound.com](mailto:info@sdtultrasound.com)

*North America/South America/Asia & Australia:*

**SDT North America INC.**

1532 Ontario Street  
Cobourg, ON, CA K9A 4R7

☎ 1 (905) 377-1313

✉ [hearmore@sdtultrasound.com](mailto:hearmore@sdtultrasound.com)





sdtultrasound.com