

**INTERIOR DESIGNER, CARPENTER SERVICES & TURNKEY PROJECT**





## ABOUT US

KGC Interiors” excels in Turnkey Contracting, founded in 2015 by Mrs. Jignasa Bhomaram Suthar and heads a team of expert and experienced to make clients’ conception or ideas into reality in terms of their Office, Residence, Retail Outlet, Showrooms, Banks, Corporate Offices, Hospitals and Hotels Restaurants. Having the successful track record of undertaking turnkey Projects of over 15 years, of Mr. Bhomaram Suthar, we always give proper care on the projects that are individually executed with complete supervision maintaining the quality of the job.

Today in this competitive world, we are proud to have the expertise which includes a wide array of dedicated services and the potential people to execute the project that ultimately leads to the complete satisfaction of the clients. And this is because of the exceptional services and the clients’ faith made us different among others in the Turnkey Contractor arena.

Our insight service is completely architectural crafted with care that influences the lives and the environment. Our service is the result of new ideas and modification of customer plans which emphasize on the balanced presentation of the final job, other Architectural contract and also turnkey projects; we strive real hand to execute the best piece of work for our esteemed clients.

Our service includes understanding & shaping our client's dreams into a reality, step by step mode of working, maintaining schedules of service to meet Deadline with complete transparency.

## SECTORS WE SERVE

- Banks
- Hotels & Restaurants
- Schools & Colleges
- Malls & Theaters
- IT
- Corporate Industries
- Airports
- Retails
- FMCG
- Residential
- Hospitals
- We also Develop Interiors & Product to Conform to Leeds Green Building Certifications

## VISION

Our Vision is to become a leading company globally in total interior turnkey solution that will be reputed and best known for having transformed the environment.

Our aim is to serve best, execute best, understanding the clients' expectation fully, putting ourselves in the gap between inception and reality with qualitative, high standard and time maintaining service.

## MISSION

Adding Value Through Excellence Our Mission Statement embodies everything we stand for. The way we do our business, our work culture, our passion for quality, our obsession with innovative technologies, our commitment to our human resources and above all our dedication to provide customer delight and satisfaction, are all powered by our singular focus on Adding Value Through Excellence.

## COMPANY POLICY

We only take maximum of 5 projects in single calendar year to maintain the best quality of our work and through which we provide client satisfaction. Until the project gets completed, we do not undertake any other project work. We are paying highest attention to the undertaken project at a time. We always require work completion certificate from our client on the completion of the work.

As per the company policy, we demand advance contract money with work order depends up on the project as we are making payments to our vendor in advance not less than half of the total invoice value.

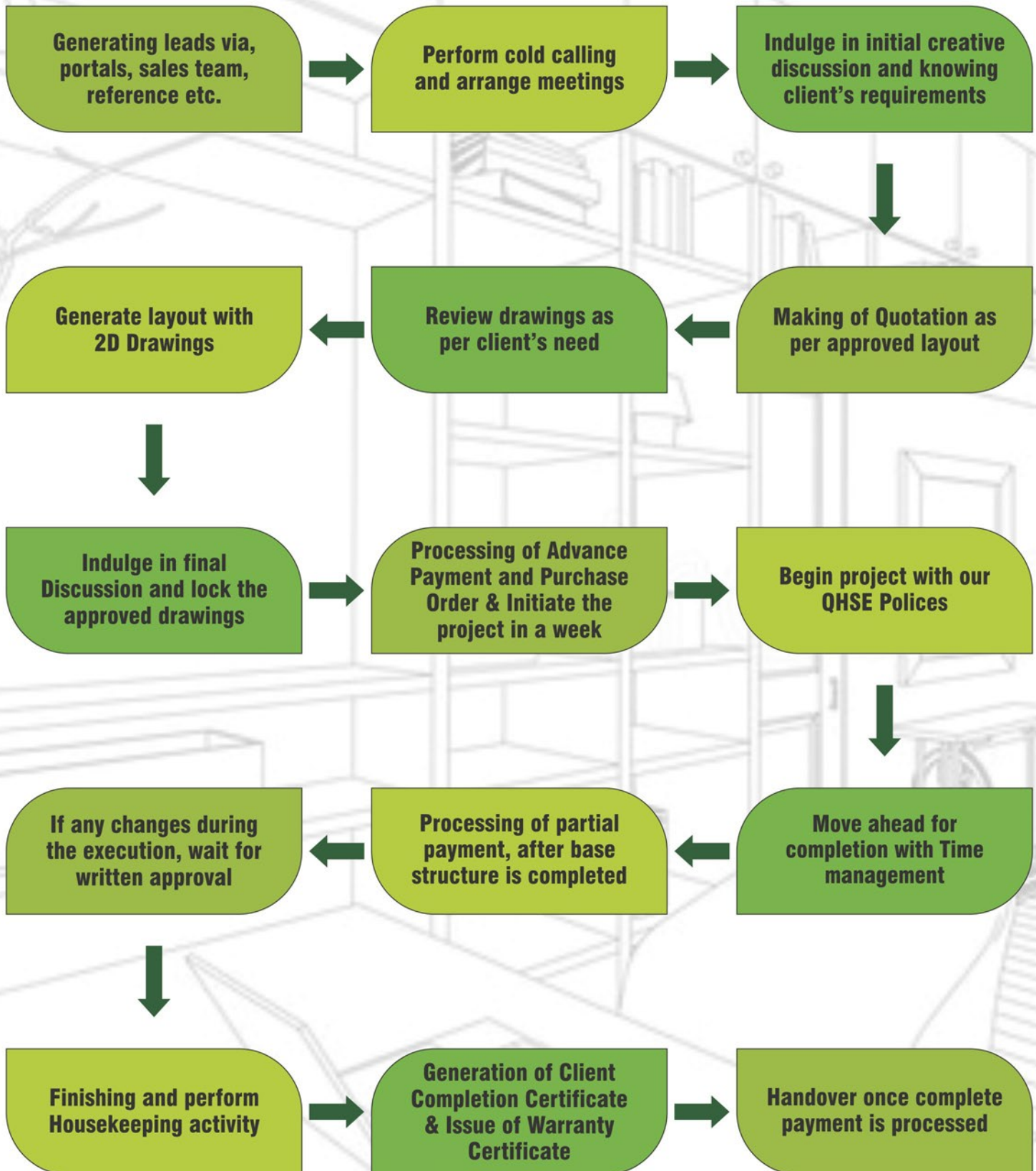
## QUALITY POLICY

The long-term business depends on our ability to continually improve the quality of our services and products while protecting people and the environment. Emphasis must be placed on ensuring human health, operational safety, environmental protection, quality enhancement, and community goodwill. This commitment is in the best interests of our customers, our employees our contractors and the communities in which we live and work.

We follow and maintain active commitment to and accountability for QHSE from all employees and contractors. Line management has a leadership role in the communication and implementation of and ensuring compliance with QHSE policies and standards.

We are committed to and constantly strive to meet and exceed requirements and expectations of our customers by:

- protecting and striving for improvement of the health, safety, and security of our people at all times
- eliminate quality non-conformances and HSE accidents
- constantly upgrading the skills and quality of our vendors and sub-contractors.
- set quality and HSE performance objectives; measure results; and assess and continually improve processes, services, and product quality through the use of an effective management system
- plan for, respond to, and recover from any emergency, crisis, and business disruption
- minimize our impact on the environment through pollution prevention, reduction of natural resource consumption and emissions, and the reduction and recycling of waste
- apply our technical skills to all HSE aspects in the design and engineering of our services and products
- improve our performance that are of global concern and on which we can have an impact and share with them our knowledge of successful QHSE programs and initiatives.



01



Dismantallation of old walls and planning for our project

02



Progress work for flooring.

03



Trunking, electric and networking and other wall furnishing work.

04



New civil work structure of washroom, pantries and others.

05



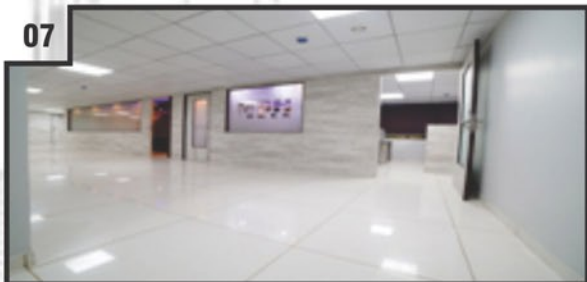
Finished flooring and false ceiling structure.

06



Wooden furniture structure and electric work.

07



Finished work with laminated false ceiling completed cleaning & housekeeping.

08



Finished Project.

## OUR TEAM





**GLASS CABIN**



**ALUMINIUM & GLASS PARTITION**



**ALUMINIUM COMPOSITE  
PANEL FALSE CEILING**



**ALUMINIUM OFFICE PARTITION**



**AUDITORIUM**



**BANK FURNITURE**



**BRICKS WALL CIVIL WORK**



**BUILDING DUCT COVERING**



**CONFERENCE TABLES**



**ELECTRIC & NETWORKING**



**FILE STORAGE RACK**



**FULL VIEW OFFICE INTERIOR**



**ACP FRONT SIDE ELEVATION**



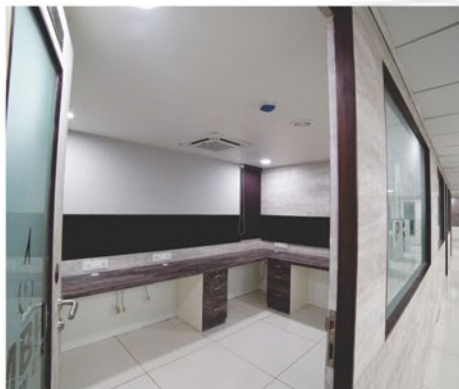
**HPL CLADDING ELEVATION**



**GLASS GLAZING ELEVATION**



**T GRID FALSE CEILING**



**GLASS & WOODEN PARTITION**



**LAB FURNITURE**



**LINEAR WORKSTATION**



**WOODEN PANELLING**



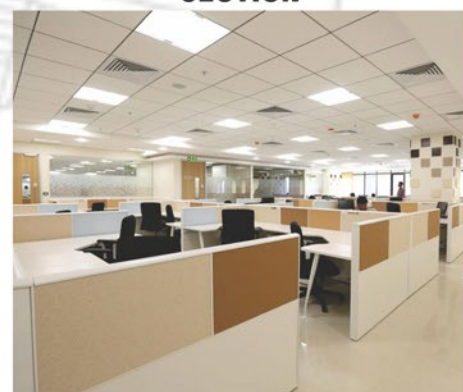
**OFFICE ALUMINIUM PARTITION SECTION**



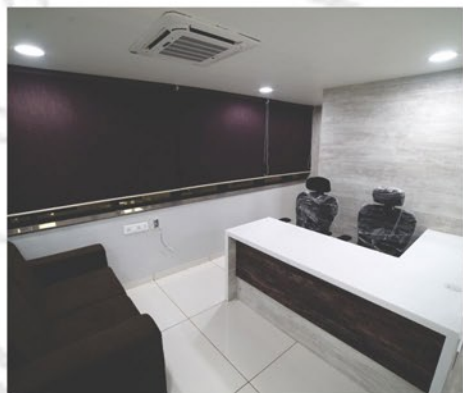
**OFFICE CONFERENCE TABLE**



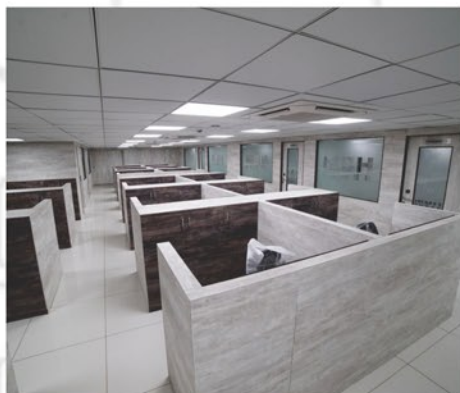
**OFFICE CUBICAL**



**OFFICE INTERIOR TURNKEY PROJECT**



**OFFICE MANAGER TABLE**



**OFFICE INTERIOR**



**RECEPTION TABLE**



**RESTAURANT FURNITURE**



**SCHOOL FURNITURE DESK**



**TOUGHENED GLASS OFFICE PARTITIONS**



**TOUGHENED GLASS WALL PARTITION**



**WOODEN & GLASS CABIN**



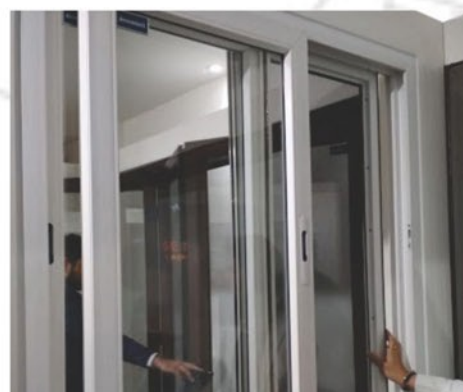
**WOODEN HALF PARTITION**



**WORKSTATION WITH DRAWER PEDSTAL**



**ALUMINIUM SLIDING WINDOW**



**UPVC SLIDING WINDOW**



**VILLA-BUNGLOW FULL PROJECT**



**HOUSE RENOVATION**



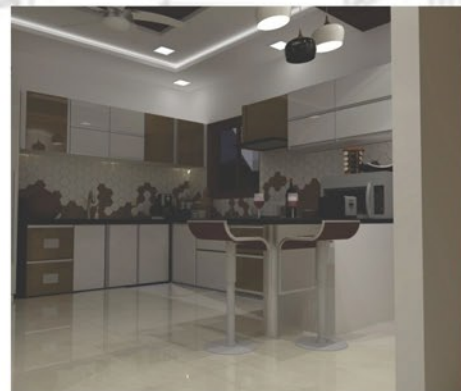
**MAIN DOOR**



**MAIN SAFETY DOOR**



**FLOORING WORK TILES DESIGN**



**KITCHEN CROCKERY CUPBOARDS**



**LIVING-ROOM**



**WASHROOM DESIGN**



**GYPSUM FALSE CEILING**



**POP FALSE CEILING**



**BEDROOM INTERIOR**



**SOFA SET**



**INDUSTRIAL SHEDS**



**INDUSTRIAL SHEDS**



**INDUSTRIAL SHEDS**



**INDUSTRIAL STRUCTURE**



**INDUSTRIAL ROOFING & SHEDS**



**INDUSTRIAL PLANT SHEDS**



**INDUSTRIAL AREA**



**INDUSTRIAL AREA**



**INDUSTRIAL ROOFING**



**INDUSTRIAL INSIDE AREA**



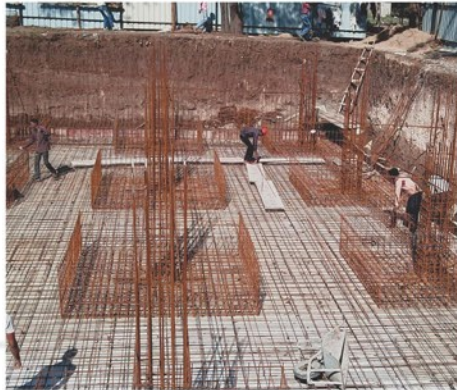
**INDUSTRIAL SHEDS**



**BUILDING**



**FOUNDATION WORK**



**FOUNDATION WORK**



**FOUNDATION WORK**



**FOUNDATION WORK**



**CONSTRUCTION WORK**



**CONSTRUCTION WORK**



**CONSTRUCTION WORK**



**CONSTRUCTION WORK**



**CONSTRUCTION WORK**



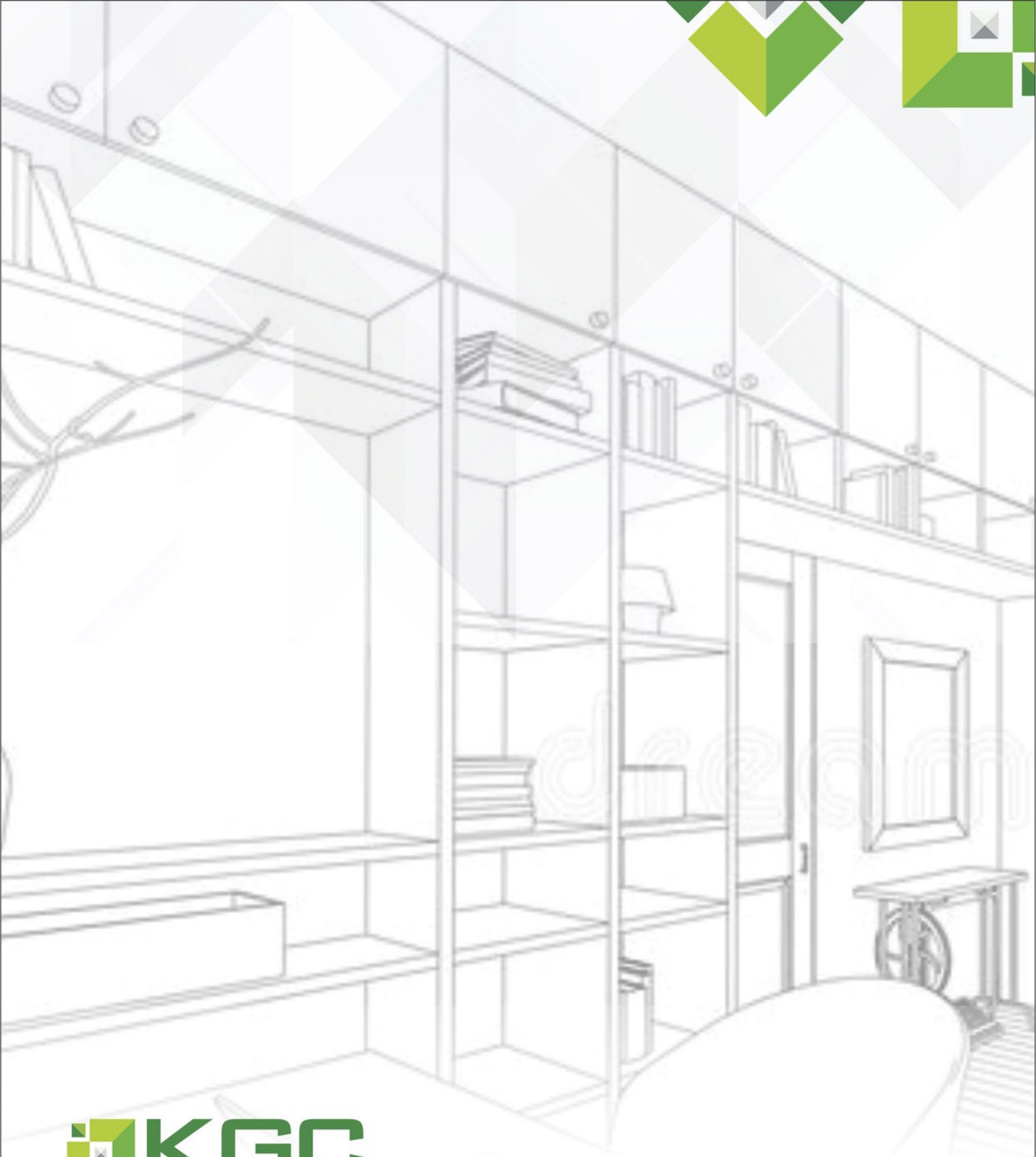
**BUILDING WORKS**



**BUILDING WORKS**



**BUILDING WORKS**



**Office :** 306, 3rd Floor, Lotus Enora Complex,  
Near Benjamin World School, Radiyadba Road,  
New Alkapuri, Gotri, Vadodara (Gujarat) 390021,  
Phone : 0265 4004777, M : 093279 54777

**E-mail :** [info@kgcinteriors.in](mailto:info@kgcinteriors.in), [kgcinteriors22@gmail.com](mailto:kgcinteriors22@gmail.com)  
**[www.kgcinteriors.in](http://www.kgcinteriors.in)**

connect with us on

