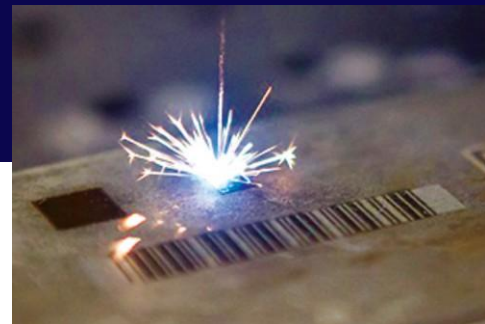


# Indian Manufacturer of Laser Machine

## Laser Marking Machine Motorized



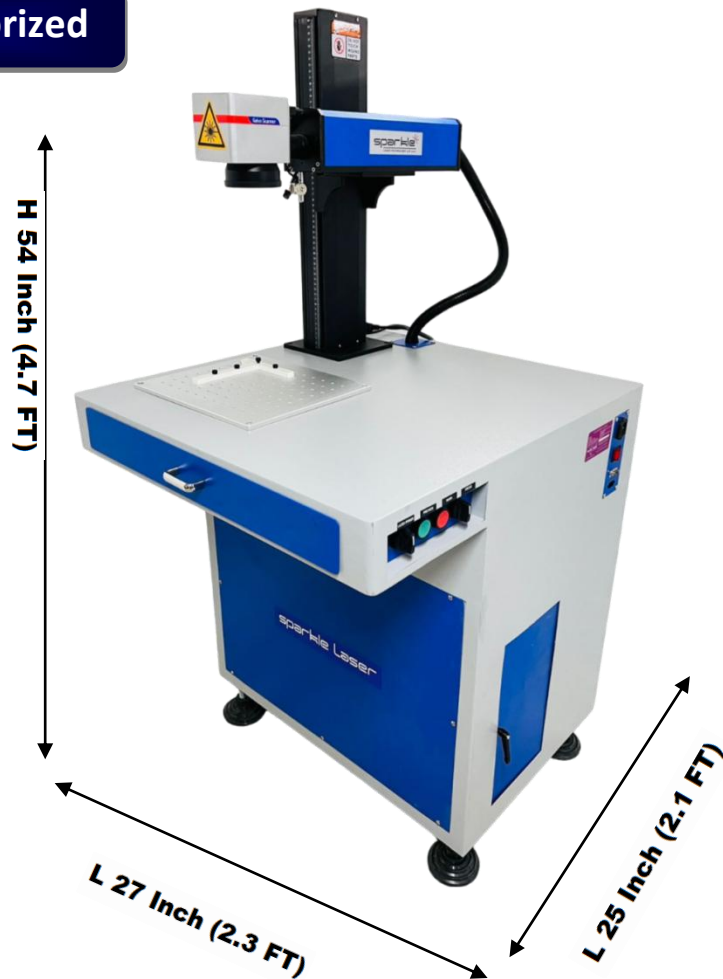
2600 + Successful Installation All Over India USA, UK, Canada, South Africa...



 Fiber Laser Marking / Engraving Machine for  
All Metal & Plastic...

# Laser Marking / Engraving Machine

## Mega Motorized



## Application



Aluminum, Stainless Steel, Brass, Titanium, Plastic, Alloy Steel, Bronze, Copper, Platinum and So On...

## Specification

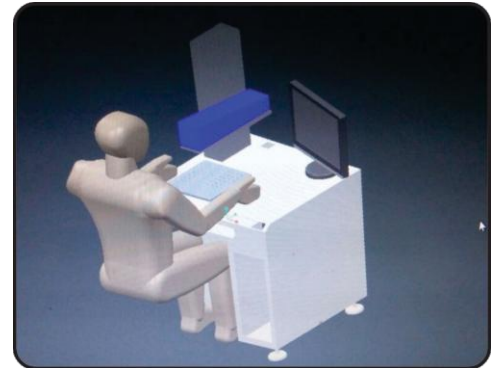
Laser Type	Pulsed Fiber Laser
Average Output Power	20 / 30 / 50 / 100 W
Wavelength	1064 nm
Output Power Stability (Typical)	5%
Power Adjusting Range	1 ~ 100 %
Resolution Frequency	20-500 KHz
Beam Quality (M <sup>2</sup> )	< 1.6
Output Beam Diameter (1/e <sup>2</sup> )	6-9 mm
Max. Linear Speed	Max 12000 mm/s
Marking Depth	0.01 ~ 0.3 mm (Material Depended)
Min. Line Width	0.03 mm
Min. Character Height	0.2 mm
Repetition Accuracy	0.2 $\mu$ m

## Electrical

Power Supply	220V / 50Hz Single Phase
Power Consumption	~ 400 W
Ambient Temperature Range	15° to 25° C
Cooling System	Air Cooling System

## Features

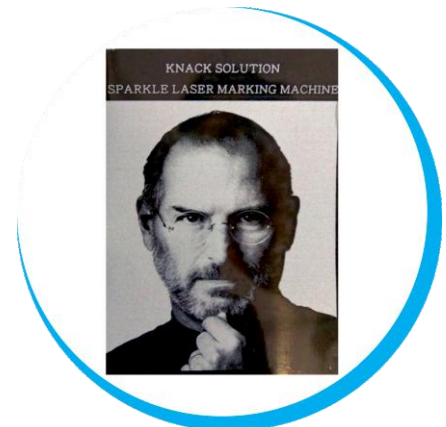
- ◆ Portable machine design with compact size
- ◆ Production Report Integration
- ◆ Status monitoring and safe shutdown
- ◆ Circumferential Markings (Mark Round Parts)
- ◆ Maintenance Free with low power consumption (~ 500 W)
- ◆ Bar-coding, 2D Data Matrix Codes, Lot Codes, Date Codes
- ◆ Real time Red beam preview ensures accurate positioning
- ◆ Compatible with Surface Marking, Engraving and Texturing
- ◆ Support customized software and automation integration
- ◆ Scribing operations, Surface Annealing and Etching
- ◆ Marking Alphanumeric, Serial Numbers and Part Numbers
- ◆ Marking of Logos, Schematics, Complex Graphics (PLT, SVG, DXF, DWG) and Pictures (BMP, JPEG, PNG)
- ◆ Auto marking functionality, Boundary & Round Preview



**Operator Friendly Machine Design**



**Online Service Support**



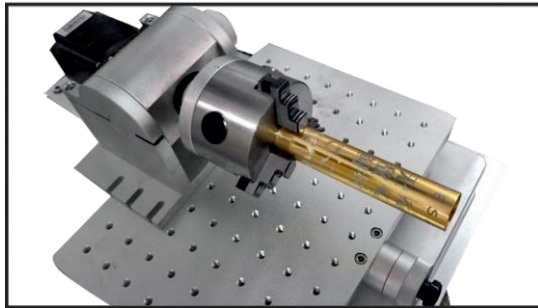
**Image Marking**

## Customer Scope :-

AC Room would be recommended (25-30 degree)

1 KVA Online UPS System & 1 KVA Isolation Transformer

## Application



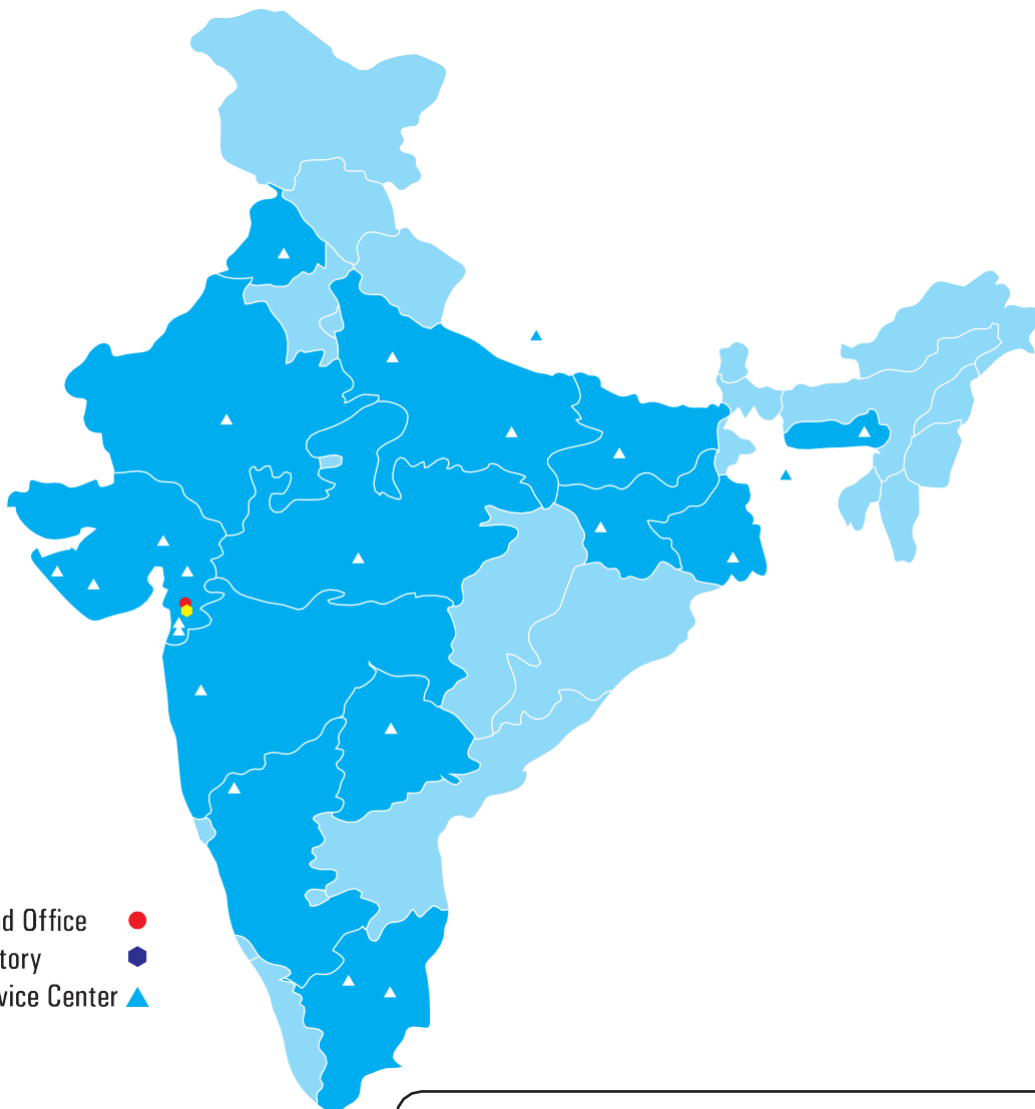
## Rotary Attachment (Optional)



Aluminum, Stainless Steel, Brass, Titanium, Plastic, Alloy Steel, Bronze, Copper, Platinum and So On...

- **Surat**
- Mumbai
- Rajkot
- Bangalore
- Delhi
- Rajasthan
- Jaisalmer
- Ahmedabad
- Bangladesh
- Belgaum
- Coimbatore
- Hyderabad
- Jamnagar
- Jaipur
- Nepal
- Pune
- Trichy
- Vadodara
- Valsad
- Vapi
- Thrissur
- Madurai
- Chennai
- Tumkur
- Solapur
- Vellor
- Kolhapur
- & All Over India

Head Office ●  
 Factory ◆  
 Service Center ▲



2600 + SUCCESSFULL INSTALLATION ALL OVER INDIA, USA, UK, CANADA, SOUTH AFRICA, NEPAL BANGALADESH, QATAR, DUBAI AND MANY MORE...

**sparkle**  
 Laser Technology LLP



An ISO 9001 : 2008

### Factory / Head Office

Plot No. 903 To 908 /  
 Building No.4, 5, 6, New  
 G.I.D.C. Katargam, Surat,  
 Gujarat, India...

**Customer Care:** + 91 9099931599  
**E-mail:** Contact@sparklelaser.com  
**web:** www.sparklelaser.com



Scan QR & Contact