

SEMI ELECTRIC STACKERS MS 1024 MS 1033



Designed for storage and handling of small items and pallets



Light and rigid construction results in strain free travel and steering by hand



Power lifting function saves time eliminates manual strain



SPECIAL FEATURES



Rigid and strong duplex mast structure - stable and safe handling



Safety handbrake ensures the stackers remaining stationary while lifting / lowering the forks



Compact design with strong steel construction - durable and stable equipment

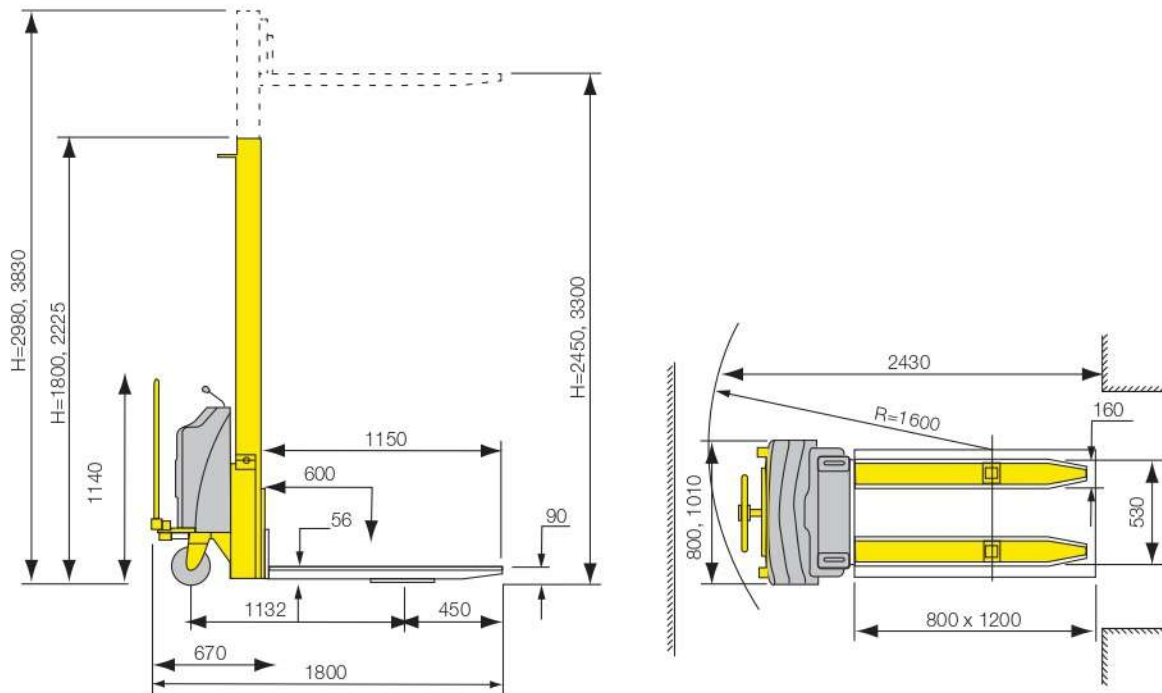


Safety guard on steering wheels

- Lift capacity: 1000 kg
- Lift height: 2450 mm for MS 1024 and 3300 mm for MS 1033

Technical Specifications

MODEL		MS 1024	MS1033
Load Capacity	kg	1000	1000
Dearted Capacity at MFH	kg	1000	700
Load Center	mm	600	600
Fork Length	mm	1150	1150
Fork Width	mm	160	160
Outside Fork Spread	mm	530	530
Inside Fork Spread	mm	210	210
Maximum Fork Height (MFH)	mm	2450	3300
Minimum Fork Height	mm	90	90
Ground Clearance	mm	30	30
Overall Height Lowered	mm	1800	2225
Overall Height Raised	mm	2980	3830
Overall Length	mm	1800	1800
Overall Width	mm	800	1010
Lifting speed, with load	mm/s	59	59
Lifting speed, without load	mm/s	87	87
Pump Motor	W	800	800
Battery	Ah/V	100/12	100/12
Battery Charger	A/V	15/12	15/12
Load Wheel (Diameter X Width)	mm	70 X 80	70 X 80
Steering Wheel (Diameter X Width)	mm	180 X 50	180 X 50
Load Wheel Type		Single/ Polyurethane	Single/ Polyurethane
Drive Wheel Type		Single/ Polyurethane	Single/ Polyurethane
Net Weight	kg	450	550
Color		Yellow	Yellow



Therefore Design SEMI ELECTRIC STACKER Rev1/06/2013