

EXTRA COOLING SYSTEM

Fast Cooling – The Revolution



TWIN COMPRESSOR WATER COOLED SCREW CHILLER

Characteristic

Variety refrigerant available:R-22,or Friendly R-407C,R-404A,R-134A,R-410A

Different Power supply : 3PHASE- 415V/480V-50HZ/60HZ

Evaporator: High efficiency threaded copper tube shell and tube type

Description

This model uses the world's first -line brand compressors ,PLC programmable controller (human-machine interface), high-efficiency energy-saving profile oxidation special evaporator ,and the world's first-line brand electronic expansion valve that can be automatically and accurately adjusted according to the load , in the past 15 years , our company has continuously improved its manufacturing processes, accumulated rich production experience ,equipped with advanced and complete inspection and inspection equipment ,and continuously strengthened its management system , which has made Shandong products truly stable, long-lived , and energy-efficient . Low, safe operation, simple and so on.

Product features

1. Twin system water cooled screw chiller.
2. ECS Make Twin system water cooled chiller range – 50 TR through 500 TR - is designed for a 15-year operating life, with the lowest lifetime operating costs in the market.
3. Oil-free, flooded shell-and-tube evaporation, low power consumption, low maintenance costs (even lower with remote monitoring) and high reliability with only one main moving part.
4. ECS Make works hard to achieve simplicity of design and operation – reflected in low operating costs and supported by the integration of the latest technologies in expansion valves and heat exchanger technology.
5. ECS Make controls enable stable and efficient operation at very low loads.

Application

ECS-WS series Water Chiller are widely used in the Plastic industry, Electronics, Plating, Chemical Industry, Food and beverage, Ultrasonic wave cooling, Printing and other industrial production. It can precisely control the exactly temperature, which requested by the modernized machinery production, and greatly improved the production efficiency and product quality. ECS Make Industrial chiller is a good partner for the modernized industry, which feather as easy to operate with reasonable design, high quality and complete range of specifications.

Parameter

The ECS series of water cooled chillers offer the most advanced design to satisfy today's industrial cooling requirements.

The entire range is assembled with components developed with well know manufacturer. The complete ECS series of packaged water cooled chillers offer max efficiency together with total reliability and are manufactured to the highest quality standard.

This new generation of water chillers is built on years of experience, the result of which is the ECS series which incorporates many major advanced standard features that other suppliers charge as extra.

WATER COOLED SCREW CHILLER ALONG WITH DUAL COMPRESSOR					
Model		ECS-250W	ECS-330W	ECS-450W	ECS-500W
Power Supply		3 Phase-380V-50Hz			
Outlet Temperature		+5deg C ~+35 deg C can be control.			
Cooling Capacity	Kw	252	328	453	486
	Kcal/Hr.	216720	282080	389580	417960
	Tons	71.59	93.18	128.69	138.06
Refrigerant	Type	R22 / R407c / R134a /R410a			
	Control Type	Thermostatic expansion valve			
Compressor	Type	Semi-closed screw type			
	Quantity	02 Nos.	02 Nos.	02 Nos.	02 Nos.
	Power (Kw.)	60.0	78.1	107.9	109.6
	Start	Y-△			
	Capacity	25-50-75-100 (%) or 25-100 (%)			
Evaporator	Type	High efficiency copper tube shell and tube type			
	Chilled water flow (m3/h)	43.2	56.2	77.7	83.3
	Inlet/Outlet Pipe Dia. (mm)	DN100	DN100	DN125	DN125
Condenser	Type	High efficiency threaded copper tube shell and tube type			
	Water Flow (m3/h)	58.8	76.6	105.8	112.3

	Pipe Dia. Of Cooling Water	DN100	DN100	DN125	DN125
Dimension	L	2500	3500	4000	4000
	W	900	900	900	1000
	H	1500	1500	1500	1800
Weight	Kg.	1300	1450	1700	1900
Protection Systems		Compressors overheat protection, high/low pressure protection, phase missing/sequence protection, flow rate protection, anti-frozen protection.			

WATER COOLED SCREW CHILLER ALONG WITH DUAL COMPRESSOR					
Model		ECS-600W	ECS-700W	ECS-930W	ECS-1100W
Power Supply		3 Phase-380V-50Hz			
Outlet Temperature		+5deg C ~+35 deg C can be control.			
Cooling Capacity	Kw	604	706	933	1078
	Kcal/Hr.	519440	607160	802380	927080
	Tons	171.59	199.03	265.05	306.25
Refrigerant	Type	R22 / R407c / R134a /R410a			
	Control Type	Thermostatic expansion valve			
Compressor	Type	Semi-closed screw type			
	Quantity	02 Nos.	02 Nos.	02 Nos.	02 Nos.
	Power (Kw.)	132.2	156.4	206.04	237.6
	Start	Y-△			
	Capacity	25-50-75-100 (%) or 25-100 (%)			
Evaporator	Type	High efficiency copper tube shell and tube type			
	Chilled water flow (m3/h)	103.5	121	159.9	184.8
	Inlet/Outlet Pipe Dia. (mm)	DN150	DN150	DN200	DN200
Condenser	Type	High efficiency threaded copper tube shell and tube type			
	Water Flow (m3/h)	138.8	162.6	214.9	248.1
	Pipe Dia. Of Cooling Water	DN150	DN125*2	DN125*2	DN150*2
Dimension	L	4000	4200	4400	4400
	W	1000	1500	1600	1600
	H	1800	1500	1750	1750
Weight	Kg.	2150	2250	2450	2500
Protection Systems		Compressors overheat protection, high/low pressure protection, phase missing/sequence protection, flow rate protection, anti-frozen protection.			

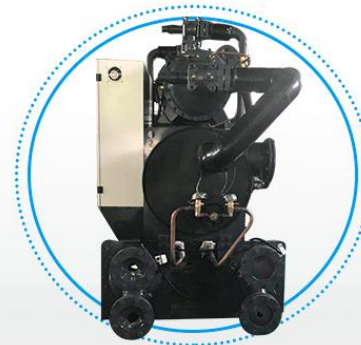
Details



Product Front



Product Back



Product Side

1 HIGH EFFICIENCY COMPRESSOR

Screw compressors normally employed for medium to large cooling capacity, BITZER, HANBELL, HITACHI for options, the output power of screw compressor can be controlled automatically by control system. Furthermore, there are four phases for choosing: 25%-50%-75%-100%. And the motor of the screw compressor is star delta start.



2 CONDENSER&EVAPORATOR

Shell and Tube type condenser is normally called water cooled type, this series chiller need to employ water cooling tower to discharge the heat, which is always used for large cooling capacity or the local place temperature is higher than 40 degree celsius. Shell and tube type evaporator with insulation outside to keep the temperature from becoming heat.



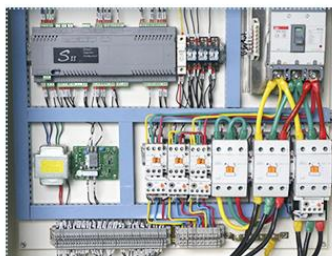
3 CONTROL PANEL

The electric components we use SCHNEIDER brand, as you know the electricity is very important for the chiller, also affect the safety of the operator, schneider is what we trust.



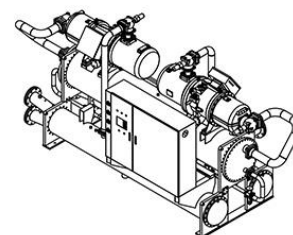
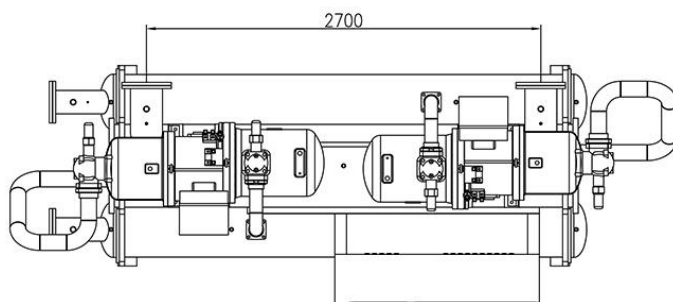
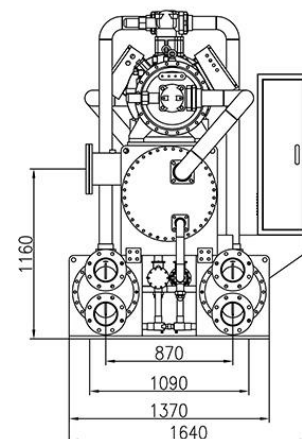
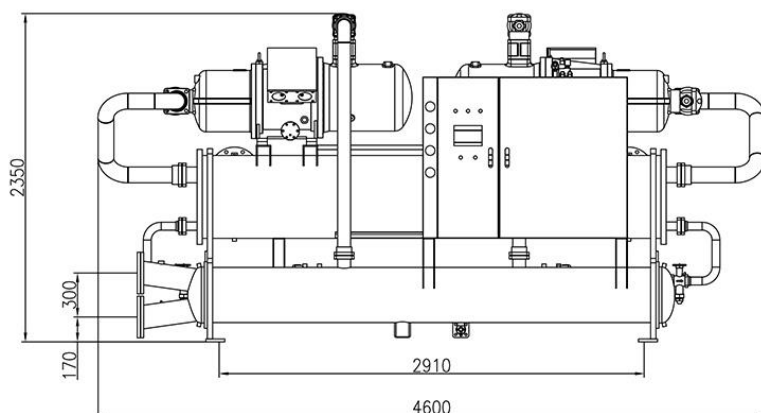
4 ELECTRIC CABINET

Adopt LS or Schneider brand electric components.



5 SOLENOID VALVE&FILTERS

Danfoss Or Emerson.



100 TON DUAL CIRCUITS WATER COOLED CHILLER

Characteristic

Cooling capacity 60 Ton to 1500Ton
 Temperature control 7°C to 35°C, 0°C, -5°C, -10°C to -40°C optional

Shell and tube evaporator and condenser
 Bizer or Hanbell semi-hermetic screw compressor
 Optional refrigerant R134a, R407c and R410a
 Safety protection devices of whole screw chiller
 all models and cooling capacity available

Description

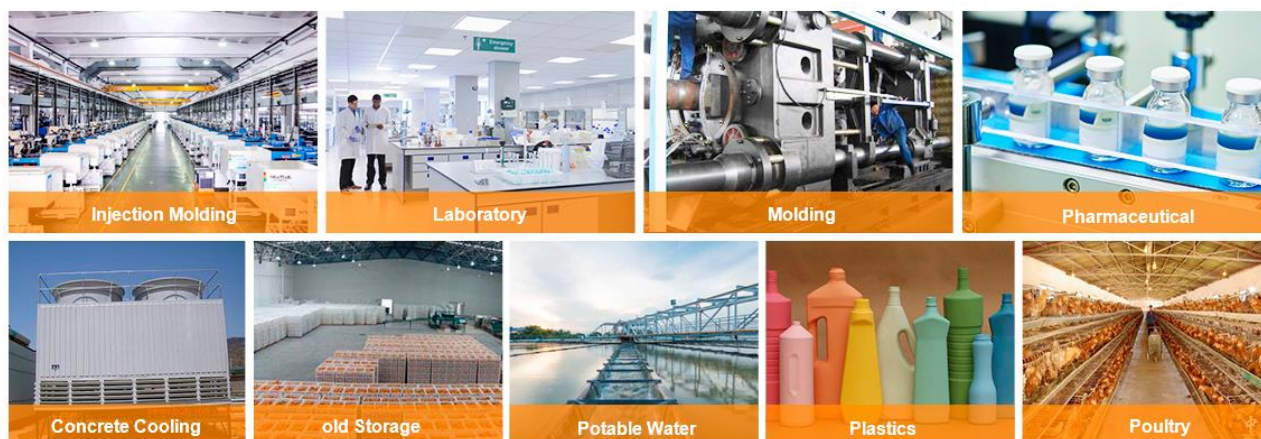
This model uses the world's first -line brand compressors ,PLC programmable controller (human-machine interface), high-efficiency energy-saving profile oxidation special evaporator ,and the world's first-line brand electronic expansion valve that can be automatically and accurately adjusted according to the load , in the past 15 years , our company has continuously improved its manufacturing processes, accumulated rich production experience ,equipped with advanced and complete inspection and inspection equipment ,and continuously strengthened its management system , which has made Shandong products truly stable, long-lived , and energy-efficient . Low, safe operation, simple and so on .

Product features

1. Twin system water cooled screw chiller.
2. ECS Twin system water cooled chiller range – 50 TR through 500 TR - is designed for a 20-year operating life, with the lowest lifetime operating costs in the market.
3. Oil-free, flooded shell-and-tube evaporation, low power consumption, low maintenance costs (even lower with remote monitoring) and high reliability with only one main moving part.
4. ECS works hard to achieve simplicity of design and operation – reflected in low operating costs and supported by the integration of the latest technologies in expansion valves and heat exchanger technology.
5. ECS controls enable stable and efficient operation at very low loads.

Application

ECS-WS series Water Chiller are widely used in the Plastic industry, Electronics, Plating, Chemical Industry, Food and beverage, Ultrasonic wave cooling, Printing and other industrial production. It can precisely control the exactly temperature, which requested by the modernized machinery production, and greatly improved the production efficiency and product quality. ECS Industrial chiller is a good partner for the modernized industry, which feather as easy to operate with reasonable design, high quality and complete range of specifications.



Parameter

WATER COOLED SCREW CHILLER ALONG WITH DUAL COMPRESSOR				
Model		ECS-350W	ECS-550	ECS-620
Power Supply		3 Phase-380V-50Hz		
Outlet Temperature		+5deg C ~+35 deg C can be control.		
Cooling Capacity	Kw	354.0	568.0	620.0
	Kcal/Hr.	304440	488480	533200
	Tons	100.5	161.3	176.3
Refrigerant	Type	R22 / R407c / R134a /R410a		
	Control Type	Thermostatic expansion valve		
Compressor	Type	Semi-closed screw type		
	Quantity	02 Nos.	02 Nos.	02 Nos.
	Power (Kw.)	84.3	124.2	135.2
	Start	Y-△		
	Capacity	25-50-75-100 (%) or 25-100 (%)		
Evaporator	Type	High efficiency copper tube shell and tube type		
	Chilled water flow (m3/h)	60.7	97.4	106.3
	Inlet/Outlet Pipe Dia. (mm)	DN100	DN125	DN150
Condenser	Type	High efficiency threaded copper tube shell and tube type		
	Water Flow (m3/h)	82.6	130.5	142.6
	Pipe Dia. Of Cooling Water	DN100	DN125	DN80*2
Dimension	L	3500	4000	4000
	W	900	1000	1400
	H	1500	1800	1800
Weight	Kg.	1500	1900	2300
Protection Systems		Compressors overheat protection, high/low pressure protection, phase missing/sequence protection, flow rate protection, anti-frozen protection.		



200TR – 300TR SCREW INDUSTRIAL CHILLER

Characteristic

Cooling capacity 60 Ton to 500Ton

Temperature control 7°C to 35°C, 0°C, -5°C, -10°C to -40°C optional

Shell and tube evaporator and condenser

Bizer or Hanbell semi-hermetic screw compressor

Optional refrigerant R134a, R407c and R410a

Safety protection devices of whole screw chiller

All models and cooling capacity available

About us

As a leading water-cooled screw chiller manufacturer with almost 18 years of experience since 2015, ECS provides a complete range of water-cooled screw chiller from ECS-WS series.

The cooling capacity of screw water chiller is from 30Ton to 500 Ton/105KW to 1750KW and the chiller temperature control range from +30°C to -40°C.

Besides the standard water-cooled screw chiller control temperature from 7°C to 30°C, ECS also has a water-cooled glycol screw chiller control temperature below zero from 0°C to -40°C for some special industrial applications.

With experience in design and manufacturing water-cooled screw chiller from ECS has the following features:

1. Using famous brand Semi-hermetic Screw Compressor- Bitzer from Germany and Handbell from Taiwan.
2. Each screw compressor comes with 4 steps of energy control 0-25%-50%-75%-100% to make sure the whole screw chiller operates when stable with high refrigeration performance.
3. Each water-cooled screw chiller with high-efficiency shell and tube type heat exchanger and aluminum foil with a copper tube air cooled condenser.
4. Integrated PLC control system with human-computer interface and big LED touch screen panel for easy operation.
5. Other refrigeration parts are world famous refrigeration spare parts like Danfoss thermal expansion valve, Alco dryer filter, Schneider contactor, and overload relay will make sure the whole screw chiller works under normal condition.

6. Compared with air cooled screw chiller, water cooled screw chiller should run together with external cooling tower and water pump. This is the biggest difference between air cooled screw chiller and water cooled screw chiller.

7. As a professional water cooled screw chiller manufacturer, ECS has exported many water cooled screw chillers to the Philippines, Australia, New Zealand, Malaysia, Singapore, Indonesia, Chile, Mexico, Costa Rica, Brazil, Argentina, Colombia, South Africa, Nigeria, Saudi Arabia, Dubai, Spain, Italy, etc.

If you are searching for a water-cooled screw chiller supplier, you are coming to the right place. ECS is a high reputation brand in the refrigeration market.

If you have any water-cooled screw chiller inquiry, please contact our engineering for a solution and free quotation.

Application

ECS-WS series Water Chiller are widely used in the Plastic industry, Electronics, Plating, Chemical Industry, Food and beverage, Ultrasonic wave cooling, Printing and other industrial production. It can precisely control the exactly temperature, which requested by the modernized machinery production, and greatly improved the production efficiency and product quality. ECS Industrial chiller is a good partner for the modernized industry, which feather as easy to operate with reasonable design, high quality and complete range of specifications.



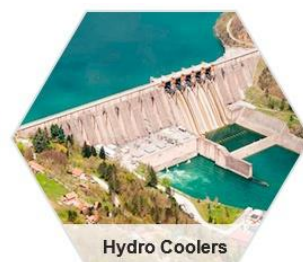
Food Mixing



HVAC



Hydraulics



Hydro Coolers



Dry Cleaning



Die Casting



Extrusion Moldin



Fermentating

Parameter

WATER COOLED SCREW CHILLER ALONG WITH DUAL COMPRESSOR				
Model		ECS-650	ECS-750	ECS-970
Power Supply		3 Phase-380V-50Hz		
Outlet Temperature		+5deg C ~+35 deg C can be control.		
Cooling Capacity	Kw	656.0	768.0	975.0
	Kcal/Hr.	564160	660480	838500
	Tons	186.36	218.18	276.98
Refrigerant	Type	R22 / R407c / R134a /R410a		
	Control Type	Thermostatic expansion valve		
Compressor	Type	Semi-closed screw type		
	Quantity	02 Nos.	02 Nos.	02 Nos.
	Power (Kw.)	144.2	172.4	211.2
	Start	Y-△		
	Capacity	25-50-75-100 (%) or 25-100 (%)		
Evaporator	Type	High efficiency copper tube shell and tube type		
	Chilled water flow (m3/h)	112.5	131.7	167.1
	Inlet/Outlet Pipe Dia. (mm)	DN150	DN200	DN200
Condenser	Type	High efficiency threaded copper tube shell and tube type		
	Water Flow (m3/h)	144.2	172.4	211.2
	Pipe Dia. Of Cooling Water	DN150	DN200	DN200
Dimension	L	4000	4200	4400
	W	1400	1500	1500
	H	1600	1600	1800
Weight	Kg.	2500	3300	3900
Protection Systems		Compressors overheat protection, high/low pressure protection, phase missing/sequence protection, flow rate protection, anti-frozen protection.		

The ECS series of air cooled water/water cooled chillers offer the most advanced design to satisfy today's industrial cooling requirements.

The entire range is assembled with components developed with well know manufacturer. The complete ECS series of packaged air cooled /water cooled chillers offer max efficiency together with total reliability and are manufactured to the highest quality standard.

This new generation of water chillers is built on years of experience, the result of which is the ECS series which incorporates many major advanced standard features that other suppliers charge as extra.

WATER COOLED SCREW CHILLER WITH SINGLE COMPRESSOR



Characteristic

Cooling capacity 30 Ton to 200Ton

Temperature control 7°C to 35°C, 0°C, -5°C -10°C to -40°C optional

Shell and tube evaporator and condenser

Bizer or Hanbell semi-hermetic screw compressor

Optional refrigerant R134a, R407c and R410a

Safety protection devices of whole screw chiller

All models and cooling capacity available

Application

ECS-WS series Water Chiller are widely used in the Plastic industry, Electronics, Plating, Chemical Industry, Food and beverage, Ultrasonic wave cooling, Printing and other industrial production. It can precisely control the exactly temperature, which requested by the modernized machinery production, and greatly improved the production efficiency and product quality. ECS Industrial chiller is a good partner for the modernized industry, which feather as easy to operate with reasonable design, high quality and complete range of specifications.



Dairy Milk



Semiconductor



HVAC



Breweries



Laboratory



Concrete Cooling



Pharmaceutical



Potable Water



Swimming Pool



Welding

Parameter

WATER COOLED SCREW CHILLER WITH SINGLE COMPRESSOR			
Model	ECS-90W	ECS-125W	ECS-165W
Power Supply	3 Phase-380V-50Hz		
Outlet Temperature	+5deg C ~+35 deg C can be control.		

Cooling Capacity	Kw	92	126	164
	Kcal/Hr.	79120	108360	141040
	Tons	26.13	35.79	46.59
Refrigerant	Type	R22 / R407c / R134a /R410a		
	Control Type	Thermostatic expansion valve		
Compressor	Type	Semi-closed screw type		
	Quantity	01 No.	01 No.	01 No.
	Power (Kw.)	23.0	32.0	39.0
	Start	Y-△		
	Capacity	25-50-75-100 (%) or 25-100 (%)		
Evaporator	Type	High efficiency copper tube shell and tube type		
	Chilled water flow (m3/h)	15.8	21.6	28.1
	Inlet/Outlet Pipe Dia. (mm)	DN50	DN65	DN80
Condenser	Type	High efficiency threaded copper tube shell and tube type		
	Water Flow (m3/h)	21.7	29.8	38.3
	Pipe Dia. Of Cooling Water	DN50	DN65	DN80
Dimension	L	2300	2500	2500
	W	750	750	750
	H	1500	1500	1500
Weight	Kg.	660	700	800
Protection Systems		Compressors overheat protection, high/low pressure protection, phase missing/sequence protection, flow rate protection, anti-frozen protection.		

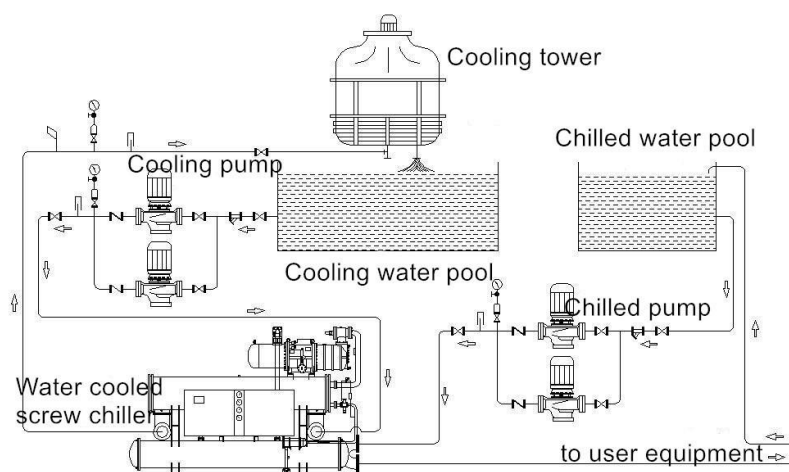
WATER COOLED SCREW CHILLER WITH SINGLE COMPRESSOR				
Model		ECS-180W	ECS-220W	ECS-240W
Power Supply		3 Phase-380V-50Hz		
Outlet Temperature		+5deg C ~+35 deg C can be control.		
Cooling Capacity	Kw	177	219	236
	Kcal/Hr.	152220	188340	202960
	Tons	50.28	62.21	67.04
Refrigerant	Type	R22 / R407c / R134a /R410a		
	Control Type	Thermostatic expansion valve		
Compressor	Type	Semi-closed screw type		
	Quantity	01 No.	01 No.	01 No.
	Power (Kw.)	42	54	57.4
	Start	Y-△		
	Capacity	25-50-75-100 (%) or 25-100 (%)		

Evaporator	Type	High efficiency copper tube shell and tube type		
	Chilled water flow (m3/h)	30.3	37.5	40.5
	Inlet/Outlet Pipe Dia. (mm)	DN80	DN80	DN80
Condenser	Type	High efficiency threaded copper tube shell and tube type		
	Water Flow (m3/h)	41.3	51.5	55.3
	Pipe Dia. Of Cooling Water	DN80	DN80	DN80
Dimension	L	2500	800	2800
	W	750	800	800
	H	1500	1500	1500
Weight	Kg.	975	1000	1175
Protection Systems		Compressors overheat protection, high/low pressure protection, phase missing/sequence protection, flow rate protection, anti-frozen protection.		

Main Specification:

- 1) .Cooling capacity from 7°C to 35°C, or if need lower outlet temperature please inform us change the offer;
- 2) .Stainless insulated water tank and anti-freeze thermostat can provide from us;
- 3) .R22/R407c/R404a/R134a refrigerant used as standard for efficient cooling.
- 4) .Refrigeration loop controlled by high and low pressure switches.
- 5) .Compressor and pump overload relays.
- 6) .Tube-in-shell condenser design for quick heat transfer and excellent heat radiation.
- 7) .Tube-in-shell evaporator for excellent cooling.

Line Diagram





250 KW SCREW INDUSTRIAL CHILLER WITH SINGLE CIRCUITS

Characteristic

Cooling capacity 100 Ton

Temperature control 7°C to 35°C, 0°C -5°C, -10°C to -40°C optional

Shell and tube evaporator and condenser
Bizer or Hanbell semi-hermetic screw compressor

Optional refrigerant R134a, R407c and R410a

Safety protection devices of whole screw chiller

All models and cooling capacity available

Description

This model uses the world's first -line brand compressors ,PLC programmable controller (human-machine interface), high-efficiency energy-saving profile oxidation special evaporator ,and the world's first-line brand electronic expansion valve that can be automatically and accurately adjusted according to the load , in the past 5 years , our company has continuously improved its manufacturing processes, accumulated rich production experience ,equipped with advanced and complete inspection and inspection equipment ,and continuously strengthened its management system , which has made Shandong products truly stable, long-lived , and energy-efficient . Low, safe operation, simple and so on .

The ECS series of air cooled water/water cooled chillers offer the most advanced design to satisfy today's industrial cooling requirements.

The entire range is assembled with components developed with well know manufacturer. The complete ECS series of packaged air cooled /water cooled chillers offer max efficiency together with total reliability and are manufactured to the highest quality standard.

This new generation of water chillers is built on years of experience, the result of which is the ECS series which incorporates many major advanced standard features that other suppliers charge as extra.

Application

ECS-WS series Water Chiller are widely used in the Plastic industry, Electronics, Plating, Chemical Industry, Food and beverage, Ultrasonic wave cooling, Printing and other industrial production. It can precisely control the exactly temperature, which requested by the modernized machinery production, and greatly improved the production efficiency and product quality. ECS Make Industrial chiller is a good partner for the modernized industry, which feather as easy to operate with reasonable design, high quality and complete range of specifications.



Main Specification

- 1) .Cooling capacity from 7°C to 35°C, or if need lower outlet temperature please inform us change the offer;
- 2) .Stainless insulated water tank and anti-freeze thermostat can provide from us;
- 3) .R22/R407c/R404a/R134a refrigerant used as standard for efficient cooling.
- 4) .Refrigeration loop controlled by high and low pressure switches.
- 5) .Compressor and pump overload relays.
- 6) .Tube-in-shell condenser design for quick heat transfer and excellent heat radiation.
- 7) .Tube-in-shell evaporator for excellent cooling.

Parameter

WATER COOLED SCREW CHILLER WITH SINGLE COMPRESSOR					
Model		ECS-300W	ECS-350W	ECS-500W	
Power Supply		3 Phase-380V-50Hz			
Outlet Temperature		+5deg C ~+35 deg C can be control.			
Cooling Capacity	Kw	295	352	511	
	Kcal/Hr.	253700	302720	439460	
	Tons	83.80	100.0	145.17	
Refrigerant	Type	R22 / R407c / R134a /R410a			
	Control Type	Thermostatic expansion valve			
Compressor	Type	Semi-closed screw type			
	Quantity	01 No.	01 No.	01 No.	
	Power (Kw.)	70	78	86	
	Start	Y-△			
	Capacity	25-50-75-100 (%) or 25-100 (%)			
	Type	High efficiency copper tube shell and tube type			

Evaporator	Chilled water flow (m3/h)	50.6	60.3	87.6
	Inlet/Outlet Pipe Dia. (mm)	DN100	DN100	DN100
Condenser	Type	High efficiency threaded copper tube shell and tube type		
	Water Flow (m3/h)	68.8	81.1	112.6
	Pipe Dia. Of Cooling Water	DN100	DN100	DN100
Dimension	L	3200	3500	3500
	W	800	900	900
	H	1500	1500	1800
Weight	Kg.	1400	1600	1750
Protection Systems		Compressors overheat protection, high/low pressure protection, phase missing/sequence protection, flow rate protection, anti-frozen protection.		

Advantage of Screw Industrial Water Cooled Chiller

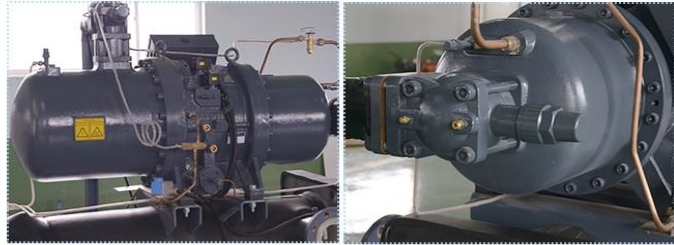
1. Higher COP due to water cooled lower condensing temperature, usually 35-45C
2. Can be installed indoor and outside house
3. Water cooled screw chiller just needs small size
4. Require external cooling tower for condenser, ensure higher cooling efficiency
5. Widely used in large cooling project, very suitable hot ambient temperature

Details



① HIGH EFFICIENCY COMPRESSOR

- 1.Brand: Hanbell Or Fusheng Or Bitzer ;
- 2.Type: Semi-Hemetic Screw Type ;
- 3.Compressor Power: 32 kw ;
- 4.Current: 52.6A ;
- 5.Capacity: 33%~66%~100%.



② CONDENSER&EVAPORATOR

- 1.Side photo show out condenser inlet/outlet;
- 2.Flow regulator Emerson expansion valve;
- 3.Thickness copper pipe;
- 4.Stable steel materials.



③ CONTROL PANEL

- 1.Punpu Micro-computer controller;
- 2.Or Siemens PLC , Modulebus;
- 3.Ethernet connection.

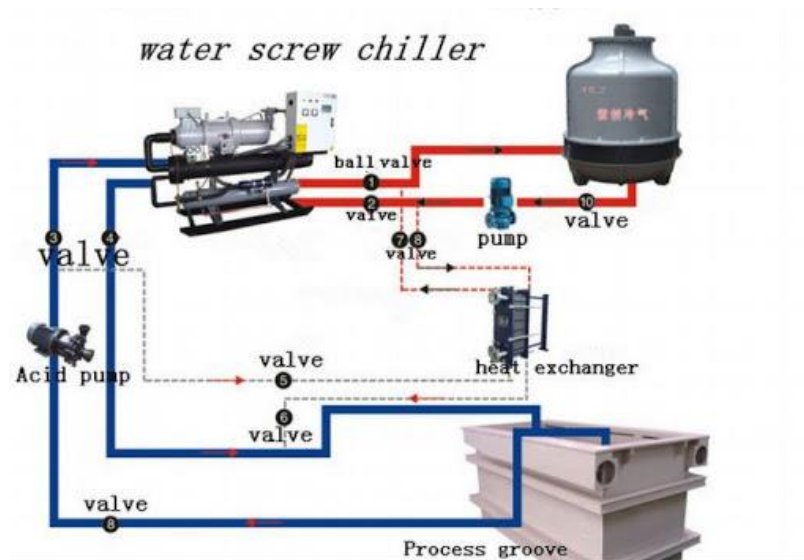


④ ELECTRIC CABINET

Adopt LS or Schneider brand electric components.

⑤ SOLENOID VALVE&FILTERS

Danfoss Or Emerson.





Questions? Contact Us!

Mr. Mitesh Oza (Managing Director)

Mobile: +91-7573872297, +91-9725634161

Email Id: info@extracoolingsystem.com

URL: www.extracoolingsystem.net

Manufacturing Unit:

Extra Cooling System

C-23, SumelBusiness Park,

Opp. HanumanpuraBRTS,

DudheshwarRoad,

Ahmedabad380004, Gujarat, India

Office Address:

Extra Cooling System

Sector No 1/276, Nirnayanagar

Opp. RameshwarTemple,

Ahmedabad 382481Gujarat, India.