

Right Pumps
for Right System

JEE
PUMPS



www.jeepumps.com



A JOURNEY OF EXCELLENCE

Being at the forefront of the Indian pump industry, we, at JEE Pumps, manufacture and supply the most high-quality pumps, ranging through various industrial sectors. Our products are revered for their finesse and integrity which has been honed by our expert engineers.

Established in 1993 by our founder, Mr. Prakash Patel, JEE Pumps has grounded a significant stand on the global market in a short span of time. Today, we have established 3 best-in-the-market manufacturing campuses which are equipped with full-fledged CNC machining center, fabrication shop, painting booth, and various other technologies that help us ensure scalable production of any magnitude.

Our products are highly durable and made with superior quality raw materials that can stand the toughest tests. They can efficiently sustain and transport both low and high-temperature liquids, recovery solvents, heat transfer fluids, toxic liquids, acids, bases, noxious, and expensive high purity fluids.

With our collated experience of over 2 decades, at JEE Pumps, we constantly try to improve our products that can further extend the standards of the industry. And as we understand the diverse needs of the dynamic industries we cater to, our products are highly customizable.

Our products are also backed by our unflinching warranty and support which provides our clients, not only premium quality but also world-class service.

Our Vision

It's our vision to become one of the primal and most sought after flow partner over a diverse set of industrial segments. We hope to dazzle our clients with superior quality products, world-class services, and the most optimal delivery time.

Our Mission

Our mission is to become a self-sufficient company that can tend to the diverse and versatile needs of the industry. We aim to make our services and products so efficient that they can tend to an array of applications across a wide range of market domains.

OUR PHILOSOPHY



BUILDING TRUST

We aim to forge long lasting bonds of trust with customers by living up to our commitments.



PROPAGATING SUSTAINABILITY

Each and every product and service we provide helps build a sustainable future.



INNOVATING CONTINUOUSLY

We constantly try to incorporate new technologies and advanced instruments to make our products more efficient and durable.





INFRASTRUCTURE

Robust infrastructure is an integral part of any company. With manufacturing and servicing units equipped with state-of-the-art technology, advanced machinery and world-class facilities, the infrastructure at JEE Pumps not only matches industry standards, but goes beyond expectations.

Jee Pumps Facility

Jee Pumps centrifugal pumps are backed by a world-class testing facility and quality assurance procedures unmatched by any other pump manufacturer. Jee Pumps testing facility followed by the hydraulic institutes pump test standard procedures, we have automated performance with fully automated test bed.



- In-house Foundry Facility for better Casting & In- time delivery
- Dynamic Balancer as per ISO 1940-1 Grade 6.3 or 2.5
- Hydraulic Test Bench
- Power Frame Assembly Room & Seal Fitment Facility
- Paint Booth
- Base Mount Fabrication Center
- VMC & CNC machine Shop
- In-house molding machines for Non Metallic pumps

Technical Expertise

Our company legacy and industry experience has proven that JEE Pumps is a strong competitor in the marketplace, We generate confidence in our product through our unmatched application knowledge and technical capabilities, all backed by our world class testing facility, and quality Procedure



JCPP SERIES

SINGLE STAGE, END SUCTION
BACK PULL OUT TYPE
CENTRIFUGAL PROCESS PUMPS



Operating Data:

Capacity	: Up to 2200 M ³ /hr
Head	: Up to 150 Mtr.
Discharge Size	: 25 mm to 300 mm
Temperature	: 350°C
Speed	: Up to 3500 rpm
Pressure	: Up to 15 kg/cm ²
M.O.C.	: C.I., C.S., SS-304 / 304L, SS316 / 316L, Bronze, Alloy-20, CD4MCU Hast alloy B & C, etc.

Applications:

- ✓ Hot and cold water circulation, cooling water circulation.
- ✓ Drip irrigation, water supply and building services.
- ✓ Thermic fluid, jet dyeing, volatile fluids.
- ✓ Condensate handling, fire fighting system, environmental.
- ✓ Engineering, marine, refrigeration and cooling tower installation etc...
- ✓ Chemicals, petrochemicals, refineries, sugar, paper, laminates. Industries, rubber, handling of hydrocarbons, organic and inorganic chemicals, condensate, d.m. water, food industries, salt, textiles Industries, power stations and industries such as pulp, fertilizer, etc...
- ✓ Corrosive and abrasive process chemicals like acids, alkalis, solvents, slurries, hydrocarbons, crystallizing liquids, nitric, ammonia, phosphate, chemical effluents, etc.

JAP SERIES

CENTRIFUGAL PROCESS PUMPS
(ANSI) IN INVESTMENT CASTING



Operating Data:

Capacity	: up to 1590 m ³ /hr
Head	: up to 275 m
Discharge Size	: 25 mm to 300 mm
Temperature	: Max. 260°C
Speed	: Up to 3500 rpm
Pressure	: 30 kg/cm ²
M.O.C.	: Ductile Iron, CF8M (316) SS, CD4MCuN and Alloy 20 materials available.

Advantages:

- ✓ Magnetic drain plug
- ✓ Extra-large capacity epoxy-coated oil sump
- ✓ Registered alignment between frame and adapter
- ✓ Standard and low-flow models available
- ✓ Heavy duty power frames
- ✓ Fully open impellers with rear-adjustment capability
- ✓ Wide variety of mechanical seal options
- ✓ Dynamically balanced impellers
- ✓ Factory certified, high quality genuine parts
- ✓ Part-for-part interchangeable with other centrifugal pumps

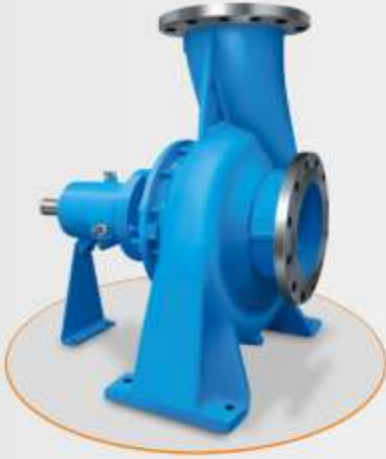
Applications:

- | | | |
|-------------------|----------------------|--------------------|
| ✓ Oil & Gas | ✓ Breweries | ✓ Pharmaceutical |
| ✓ Chemical | ✓ Grain processing | ✓ Steel |
| ✓ Petrochemical | ✓ Food Processing | ✓ Semiconductor |
| ✓ Water Treatment | ✓ Poultry Processing | ✓ Power Generation |
| ✓ Pulp & Paper | ✓ Automotive | ✓ Textile |



JPOP SERIES

SINGLE STAGE, END SUCTION
BACK PULL OUT TYPE
CENTRIFUGAL PROCESS PUMPS
PULP & PAPER MILL
INDUSTRIES PUMPS



Operating Data:

Capacity	: Up to 1200 M ³ /hr
Head	: Up to 55 Mtr.
Discharge Size	: 25 mm to 300 mm
Temperature	: Up to 250°C
Speed	: Up to 1500 rpm
Pressure	: Up to 5.5 kg/cm ²
Impellers	: Open & Semi Open type
Consistency	: Up to 7%
M.O.C.	: C.I, C.S., SS-304 / 304L, SS316 / 316L, Bronze, Alloy-20, CD4MCU Hast alloy B & C, etc.

Applications:

- ✓ Chest pump
- ✓ Refiners pump
- ✓ Fan pump
- ✓ Centri cleaner pump
- ✓ Back water pump
- ✓ Separator pump
- ✓ Couch pit pump
- ✓ Turbo feed pump etc...

JCP SERIES

END SUCTION, HORIZONTAL,
CENTRIFUGAL COUPLED PUMPS
WITH SEMI OPEN IMPELLER



Operating Data:

Capacity	: Up to 40 M ³ /hr
Head	: Up to 48 Mtr.
Discharge Size	: 25 mm to 50 mm
Temperature	: 250° C
Speed	: Up to 3500 rpm
Pressure	: Up to 4.8 kg/cm ²
M.O.C.	: C.I, C.S., SS-304 / 304L, SS316 / 316L, Bronze, Alloy-20, CD4MCU Hast alloy B & C, etc.

Applications:

- ✓ Organic/Inorganic chemicals, volatile liquids, corrosive chemicals, caustic process, effluent, filter press, slurry application.
- ✓ Pharmaceutical, dyes, textiles, kerosene, diesel and other solvents.
- ✓ ETP, STP & waste water treatment plant, fertilizers, cement and steel industries.
- ✓ For pumping chemicals, with solids in suspension polluted liquids.
- ✓ Widely used for public and civil engineering.
- ✓ Paper and pulp industries.



JSCP SERIES

HORIZONTALLY AXIALLY
SPLIT CASING PUMPS



Operating Data:

Capacity	: Up to 5000 m ³ /hr
Head	: Up to 140 Mtr.
Discharge Size	: 50 mm to 500 mm
Temperature	: Up to 100°C
Pressure	: Up to 14 kg/cm ²
Speed	: Up to 3500 rpm
M.O.C.	: C.I, C.S., SS-304 / 304L, SS316 / 316L, Bronze, Alloy-20, CD4MCU Hast alloy B & C, etc.

Applications:

- ✓ Suitable for Fire – Fighting.
- ✓ Primary & Secondary HVAC Application.
- ✓ High Pressure Boosting System.
- ✓ Dewatering in Mines.
- ✓ Cooling Tower.
- ✓ Recirculation.
- ✓ Industrial utility water Application.
- ✓ Desalination.
- ✓ Water Supply.
- ✓ Paper Plant.
- ✓ Petroleum Refineries.
- ✓ Sugar & Steel Plant.
- ✓ Power Plant.
- ✓ Air Conditioning & Refrigeration Systems.
- ✓ Irrigation.

MEGH SERIES

HORIZONTAL CENTRIFUGAL
END-SUCTION UTILITY PUMPS



Operating Data:

Capacity	: up to 2200 m ³ /hr
Head	: up to 150 m
Discharge Size	: up to 300 mm
Temperature	: up to 90°C
Speed	: up to 3500 rpm
Pressure	: up to 15 kg/cm ²
M.O.C.	: Cast Iron

Applications:

- ✓ Water Supply
- ✓ Cooling Water
- ✓ Fire-Fighting
- ✓ Solvent in Pharma Industry
- ✓ Sprinkler
- ✓ Air Conditioning
- ✓ Industrial Water
- ✓ Drinking Water
- ✓ Condensate
- ✓ Clean Juice in Sugar Industry
- ✓ Alcohol in Distillery



JMF SERIES

HORIZONTAL NON-CLOG/
MIXED FLOW PUMPS



Operation Data:

Capacity	: up to 7000 m ³ /hr
Head	: up to 60 m
Discharge Size	: up to 650 mm
Temperature	: up to 140°C
Speed	: up to 1450 rpm
M.O.C.	: C.I., C.S., SS304/304L, SS316/316L, Bronze, CD4MCu, CD4MCuN, Alloy-20, Hastelloy B&C, etc.

Applications:

- ✓ Air-conditioning
- ✓ Drainage
- ✓ Irrigation
- ✓ Storm Water
- ✓ Slurry
- ✓ Effluent Treatment Plant
- ✓ Municipal Sewage Station

JHCSP SERIES

HORIZONTAL CENTRIFUGAL
SLURRY PUMP



Operating Data:

Capacity	: up to 2275 m ³ /hr
Head	: up to 73 m
Discharge Size	: up to 12 inch
Speed	: up to 3500 rpm
Pressure	: up to 150 psi
M.O.C.	: Rubber Linear:- Natural Rubber, Urethane, Neoprene, Chlorobutyl, Nitrile, Hypalon, Viton. Metal Linear:- Graded Grey Cast Iron, Cast Steel, SS304, SS304L, SS316, SS316L, Alloy Steel, CD4MCu, Hast Alloy B&C, Nickle& Ni-Alloys, Bronze

Applications:

- ✓ Metal & Mining
- ✓ Power Plants
- ✓ Coal Mines
- ✓ Starch Industries
- ✓ Ball Mill Discharge
- ✓ Gypsum Slurries
- ✓ Minerals Concentrate
- ✓ Rod Mill Discharge
- ✓ Fly Ash Slurry
- ✓ Lime Grinding Slurry
- ✓ Mill Effluent
- ✓ Lime and Mud
- ✓ Dredging Industries
- ✓ Oil Sands



JTFP SERIES

CENTRIFUGAL AIR COOLED
HOT OIL PUMPS



Operating Data:

Capacity	: Up to 180 m ³ / hr
Head	: Up to 80 Mtr.
Discharge Size	: 32 mm to 80 mm
Temperature	: Up to 350°C
Pressure	: Up to 8 kg/cm ²
Speed	: Up to 3500 rpm
Cooling Method	: With Air
M.O.C.	: Grey Cast Iron, Cast Steel, Alloy Cast Steel

Design Future:

Horizontal, single stage, single suction volute type, air-cooled centrifugal pumps with closed impeller, pump shaft is supported by two heavy duty ball bearings, heat resistant mechanical seal, suction flange is on the front and axial, discharge flange is at top and radial.

The below fields the pump are also proper in machinery manufacturing, food processing medicine making and the circulation system for oil supplying of the hot oil boiler, the circulation system for the heating installation.

Scope of Applications:

- ✓ Petro-chemical industries.
- ✓ Oil Industries.
- ✓ Synthetic – fibre Industries.
- ✓ Textile, dyeing, printing industries.
- ✓ Plastic and rubber industries.
- ✓ Paper making industries.
- ✓ Timber processing industries.
- ✓ Sugar Industries.
- ✓ Food Industries.
- ✓ Construction Industries.

JHAF SERIES

CENTRIFUGAL HORIZONTAL
AXIAL FLOW PUMPS



Operating Data:

Capacity	: up to 10000 m ³ /hr
Head	: up to 10 m
Discharge Size	: 6" to 36"
Temperature	: up to 300°C
Speed	: up to 3500 rpm
Pressure	: up to 10 bar
M.O.C.	: C.I., C.S, SS304/SS304L, SS316/SS316L, Alloy-20, CD4MCU, Hastelloy B&C etc.

Advantages:

- ✓ Heavy duty thick metal section is provided at elbow, stuffing box & impeller for extended wear life.
- ✓ Extra large lubrication oil sump provides better heat transfer for reduced oil Temperature. Hence bearing runs cooler and lasts longer.
- ✓ High efficiency impeller available in a wide variety of vane angles.

Applications:

- ✓ To transfer very large quantity of liquid at low head.
- ✓ To raise the water level in irrigation canal.
- ✓ Dewatering of large pits/lakes etc.
- ✓ To recirculation the liquid in MEE plant.



JPF SERIES

PVDF LINED CENTRIFUGAL
PROCESS PUMPS



Operation Data:

Capacity	: up to 1000 m ³ /hr
Head	: up to 95 m
Discharge Size	: up to 250mm
Temperature	: up to 120°C
Speed	: up to 3500 rpm
M.O.C.	: PVDF

Applications:

- ✓ Speciality Chemicals
- ✓ Steel Pickling Plant
- ✓ Gas Scrubbers
- ✓ Fluoro Chemicals
- ✓ Metal Finishing Industry
- ✓ Mineral Processing Industry
- ✓ Dyes & Intermediates
- ✓ Chlor-Alkalies
- ✓ Pharmaceutical Industry

JTF SERIES

PFA/FEP LINED CENTRIFUGAL
PROCESS PUMPS



Operation Data:

Capacity	: up to 1000 m ³ /hr
Head	: up to 95 m
Discharge Size	: up to 250mm
Temperature	: up to 200°C
Speed	: up to 3500 rpm
M.O.C.	: PFA/FEP

Applications:

- ✓ Speciality Chemicals
- ✓ Steel Pickling Plant
- ✓ Gas Scrubbers
- ✓ Fluoro Chemicals
- ✓ Metal Finishing Industry
- ✓ Mineral Processing Industry
- ✓ Dyes & Intermediates
- ✓ Chlor-Alkalies
- ✓ Pharmaceutical Industry



JPP SERIES

CORROSION RESISTANT
POLYPROPYLENE
CENTRIFUGAL PUMPS



Operating Data:

Capacity	: Up to 50 m ³ /hr
Head	: Up to 45 Mtr.
Discharge Size	: 25 mm to 50 mm
Temperature	: 80°C
Speed	: Up to 3500 rpm
Pressure	: Up to 4.5 kg/cm ²
M.O.C.	: PP, UHMWPE

Applications:

- ✓ Water treatment plant, effluent treatment plant, electro plating, pickling & steel rolling mills.
- ✓ Excellent for transfer and loading – unloading like HCL, Sulphuric Acid/Alkali, Caustic Liquid.
- ✓ Scrubbing of corrosive gases like NH₃, CO₂, SO₂, SO₃, I₂, F₂, Br₂, Cl₂, etc.
- ✓ For handling liquids in various industries like textile, paper, cellulose, sugar, steel, food, having temperature range, materials, etc.
- ✓ Ideal for circulation of chemical in metal finishing industry.
- ✓ Natural choice for pickling line & scrubber in steel plants.
- ✓ High capacity transfer pump, filter press for dyes & chemicals, descaling, oil & Other fuels.

JPPL SERIES

CORROSION RESISTANT
POLYPROPYLENE
CENTRIFUGAL PUMPS



Operating Data:

Capacity	: Up to 300 m ³ /hr
Head	: Up to 65 Mtr.
Discharge Size	: 50 mm to 100 mm
Temperature	: Up to 80°C
Speed	: Up to 3500 rpm
Pressure	: Up to 6.5 kg/cm ²
M.O.C.	: PP, UHMWPE

Applications:

- ✓ Water treatment plant, effluent treatment plant, electro plating, pickling & steel rolling mills.
- ✓ Excellent for transfer and loading – unloading like HCL, Sulphuric Acid/Alkali, Caustic Liquid.
- ✓ Scrubbing of corrosive gases like NH₃, CO₂, SO₂, SO₃, I₂, F₂, Br₂, Cl₂, etc.
- ✓ For handling liquids in various industries like textile, paper, cellulose, sugar, steel, food, having temperature range, materials, etc.
- ✓ Ideal for circulation of chemical in metal finishing industry.
- ✓ Natural choice for pickling line & scrubber in steel plants.
- ✓ High capacity transfer pump, filter press for dyes & chemicals, descaling, oil & Other fuels.



JPP M SERIES

POLYPROPYLENE MONOBLOCK PUMPS

Operation Data:

Capacity	: upto 50 m ³ /hr
Head	: up to 45 Mtr.
Discharge Size	: 25 mm to 50 mm
Temperature	: 80°C
Speed	: Up to 3500 rpm
Pressure	: Up to 4.5 kg/cm ²
M.O.C.	: PP, UHMWPE



Applications:

- ✓ Water treatment plant, effluent treatment plant, electro plating, pickling & steel rolling mills.
- ✓ Excellent for transfer and loading-unloading like HCL, Sulphuric Acid/Alkali, Caustic Liquid.
- ✓ Scrubbing of corrosive gases like NH₃, CO₂, SO₂, SO₃, I₂, F₂, Br₂, Cl₂, etc.
- ✓ For handling liquids in various industries like textile, paper, cellulose, sugar, steel, food, having temperature range, materials, etc.
- ✓ Ideal for circulation of chemical in metal finishing industry.
- ✓ Natural choice for pickling line & scrubber in steel plants.
- ✓ High capacity transfer pump, filter press for dyes & chemicals, descaling, oil & other fuels.

JVPP SERIES

VERTICAL SEAL / GLAND LESS PUMPS

Operating Data:

Capacity	: Up to 50 m ³ /hr
Head	: Up to 45 Mtr.
Discharge Size	: 25 mm to 50 mm
Temperature	: 80°C
Speed	: Up to 3500 rpm
Pressure	: Up to 4.5 kg/cm ²
M.O.C.	: PP, UHMWPE

Advantage:

- ✓ No. 1 choice for effluent treatment plants since there are no mechanical seals / glands.
- ✓ Can run dry due to absence of shaft seals.
- ✓ Few parts facilitates maintenance.

Applications:

- ✓ Water treatment plant, effluent treatment plant, electro plating, pickling & steel rolling mills.
- ✓ Excellent for transfer and loading – unloading like HCL, Sulphuric Acid/Alkali, Caustic Liquid.
- ✓ Scrubbing of corrosive gases like NH₃, CO₂, SO₂, SO₃, I₂, F₂, Br₂, Cl₂, etc.
- ✓ For handling liquids in various industries like textile, paper, cellulose, sugar, steel, food, having temperature range, materials, etc.
- ✓ Ideal for circulation of chemical in metal finishing industry.
- ✓ Natural choice for pickling line & scrubber in steel plants.
- ✓ High capacity transfer pump, filter press for dyes & chemicals, descaling & oil.



JDP SERIES

AIR OPERATED DOUBLE
DIAPHRAGM



Operating Data:

Head	: up to 50 m
Flow	: up to 45 m ³ /hr.
Temperature	: up to 120°C
Material	: Investment Casting CF8M (SS-316), Aluminium, PP, PVDF
Max. Particle Size	: 6.35 mm
Air Pressure	: Max. 7.0 kg/ cm ²
Air Inlet Size	: 1/4" to 1/2"
Air Exhaust	: 3/4"
Suction	: Dry: 4.57 Meter/ Wet: 7.6 m
Teflon	: Alloys-20, CD4MCU, Hard Alloy B&C, etc.

Applications:

- ✓ Solvents, Slurry transfer, Barrels, Acidic Materials, High, Viscous Liquids, Abrasive Media.

JVTP SERIES

VERTICAL TURBINE
PUMPS



Operation Data:

Capacity	: up to 69000 m ³ /hr
Head	: up to 300 m
Discharge Size	: up to 2800 mm
Speed	: up to 3500 rpm
M.O.C.	: C.I., C.S., SS304/304L, SS316/316L, Bronze, CD4MCu, CD4MCuN, Alloy-20, etc.

Applications:

- ✓ Water Supply
- ✓ Lift Irrigation
- ✓ Fire Fighting
- ✓ Cooling Tower
- ✓ Dewatering
- ✓ Raw Water Intake
- ✓ Drainage Pump System
- ✓ Flood Control
- ✓ Circulating Water
- ✓ Industrial Utilities
- ✓ Drinking Water Scheme



JCBFP SERIES

CENTRIFUGAL HIGH PRESSURE
MULTI STAGE PUMPS



Operation Data:

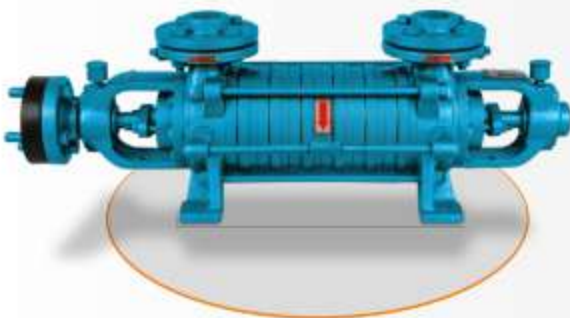
Capacity	: up to 250 m ³ /hr
Head	: up to 400 m
Discharge Size	: up to 150 mm
Temperature	: up to 120°C
Speed	: up to 3500 rpm
Pressure	: up to 40 kg/cm ²
M.O.C.	: Cast Iron, Bronze, Steel, etc.

Applications:

- ✓ Condensate water transfer.
- ✓ Sprinkler irrigation or water supply in hilly area.
- ✓ Fire-fighting system.
- ✓ Water supply to high rise buildings.
- ✓ Mine dewatering.
- ✓ Boiler feed.
- ✓ Reverse osmosis.
- ✓ Condensate extraction.
- ✓ Booster plants.
- ✓ Hot & cooling water circulating.
- ✓ High pressure for hydraulic pressure.
- ✓ Filter press washing.
- ✓ Power plant.

JSBFP SERIES

SELF PRIMMING
MULTI STAGE
HIGH PRESSURE /
HIGH HEAD PUMPS



Operating Data:

Capacity	: Up to 22 m ³ /hr
Head	: Up to 288 Mtr.
Discharge Size	: 25 mm to 50 mm
Temperature	: 105°C
Suction	: Lift up to 7 Mtr.
Speed	: Up to 1500 rpm
Pressure	: Up to 28.8 kg/cm ²
M.O.C.	: Cast Iron, Bronze, Steel etc.

Applications:

- ✓ Transfer of liquid containing vapor air or gas.
- ✓ Boiler feed, marine, refrigeration, fuel oil.
- ✓ High pressure testing.
- ✓ Power plant.
- ✓ Water supply to multi storied building.
- ✓ Hilly area village.
- ✓ Sprinkler irrigation.
- ✓ Industrial clear water.
- ✓ Condensate water transfer.



JGP SERIES

MULTI PURPOSE
ROTARY GEAR PUMPS WITH
DOUBLE HELICAL GEARS



Operating Data:

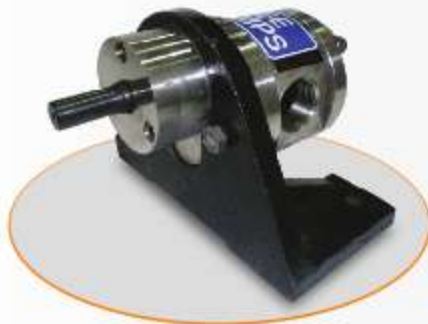
Capacity	: Up to 200 m ³ /hr
Head	: Up to 120 Mtr.
Discharge Size	: 12 mm to 200 mm
Temperature	: Up to 250°C
Speed	: Up to 1500 rpm
Pressure	: Up to 12 kg/cm ²
M.O.C.	: C.I, C.S., SS-304 / 304L, SS316 / 316L, Bronze, Alloy-20, CD4MCU Hast alloy B & C, etc.

Applications:

- ✓ To deliver a variety of light and viscous liquids such as oil, fats, coal tar, paint, molasses.
- ✓ Highly viscous or semi viscous liquids like ammonia, bleaches, coaltar, dyes, fruits juice, gasoline, glycerin, glue, grease.
- ✓ Paints, soap solution etc.

JGSP SERIES

Stainless Steel Rotary
Gear Pumps



Operating Data:

Capacity	: up to 80 m ³ /hr
Head	: up to 100 Mtr.
Discharge size	: up to 65 mm
Temperature	: up to 200 c
Speed	: up to 1440 mm
Pressure	: 10 kg
M.O.C	: SS304, SS316

Applications:

- ✓ Food product like ghee, Butter, Pulp, Vegetable sauce
- ✓ Pharmaceutical industries
- ✓ Cosmetic industries
- ✓ Dyes and resins, printing houses
- ✓ Chemical industries



JSP SERIES

SELF PRIMING
CENTRIPETAL PUMPS



Operating Data:

Capacity	: Up to 8 m ³ /hr
Head	: Up to 60 Mtr.
Discharge Size	: 25 mm to 40 mm
Temperature	: 110°C
Speed	: Up to 1440 rpm
M.O.C.	: C.I., C.S., SS-304, SS316, Bronze, Alloy-20, CD 4MCU etc.

Applications:

- ✓ Loading and unloading of small & big drums.
- ✓ Barrels.
- ✓ Small tankers.
- ✓ Large use rolling mills for pickling and solvent plant.
- ✓ Pharmaceutical.
- ✓ Laminates.

JVSP SERIES

VERTICAL LONG SHAFT
SUMP PUMPS



Operating Data:

Capacity	: Up to 325 m ³ /hr
Head	: Up to 60 Mtr.
Discharge Size	: 25 mm to 125 mm
Temperature	: 60°C
Pump Length	: Up to 4 Mtr.
Speed	: Up to 3500 rpm
Pressure	: Up to 6 kg/cm ²
M.O.C.	: C.I., C.S., SS-304 / 304L, SS316 / 316L, Bronze, Alloy-20, CD4MCU, Hast alloy B & C, etc.

Applications:

- ✓ The "JEE" sump pump is suitable for handling thin, clean or slightly contaminated liquids, such as water, cooling water, effluent, cleaning products, chemicals and hydrocarbons.
- ✓ Sulphuric Acid application, acid transfer, aquariums, chemical processing, Chlor-alkali, General Processing Industry, Light slurries, organic Chemicals, Polymers, Petrochemical Processing, Slurries, Solvents, Waste Processing.



JFPP SERIES

HORIZONTAL SINGLE STAGE
SIDE SUCTION PUMPS



Operating Data:

Capacity	: Up to 200 m ³ /hr
Head	: Up to 100 Mtr.
Discharge Size	: 40 mm to 100 mm
Temperature	: 130°C
Speed	: Up to 3500 rpm
Pressure	: Up to 10 kg/cm ²
M.O.C.	: C.I., C.S., SS-304 / 304L, SS316 / 316L, Bronze, Alloy-20, CD4MCU, Hast alloy B & C, etc.

Note: Only for positive suction head

Applications:

- ✓ Filter press feeding.
- ✓ Effluent treatment plant.
- ✓ Dyes & intermediates.
- ✓ Steel rolling mills.
- ✓ All types of industrial application.
- ✓ Slurry transfer.
- ✓ Ceramic, ETP & STP.
- ✓ Paper and pulp, sugar & food.
- ✓ Eva-operator, scrubber application.

JMP SERIES

SINGLE STAGE HORIZONTAL,
NON-CLOG SELF PRIMING,
MUD/SEWAGE PUMPS



Operating Data:

Capacity	: Up to 640 m ³ / hr
Head	: Up to 55 Mtr.
Suc. Head	: Up to 5 Mtr.
Discharge Size	: 40 mm to 200 mm
Solid Size	: Up to 50 mm
Temperature	: Up to 110°C
Speed	: Up to 3500 rpm
Pressure	: Up to 5.5 kg/cm ²
M.O.C.	: C.I., C.S., SS-304 / 304L, SS316 / 316L, Bronze, Alloy-20, CD4MCU, Hast alloy B & C, etc.

Applications:

- ✓ Dewatering, mud, marine, effluent, hotel, loading & transfer of oils, spirits, swimming pools, gas oils, engine cooling.
- ✓ Vessels, industrial-pumping petroleum products, chemical.
- ✓ Civil construction-dewatering foundations, trenches and pits.
- ✓ Filter press feeding, ETP, STP, waste water treatment plant.
- ✓ Mobile machinery – cooling water for marine engines and shovels.
- ✓ Public utilities – sewage pumping.
- ✓ Pier, excavations, pits, pot-holes etc., gram panchayats, municipalitie public health departments, large housing colonies, industries like chemical, pharmaceuticals, food, cement, paper, sugar, salt, steel an other for liquid cargo from freighter, barges.

JMSP SERIES

SINGLE STAGE HORIZONTAL,
NON-CLOG SELF PRIMING,
MUD/SEWAGE PUMPS
(MECHANICAL SEAL TYPE)



Operating Data:

Capacity	: Up to 75 m ³ /hr
Head	: Up to 58 Mtr.
Discharge Size	: 32 mm to 80 mm
Solid Size	: Up to 25 mm
Temperature	: Up to 110°C
Speed	: Up to 3500 rpm
Pressure	: Up to 5.8 kg/cm ²
M.O.C.	: C.I., C.S., SS-304 / 304L, SS316 / 316L, Bronze, Alloy-20, CD4MCU, Hast alloy B & C, etc.

Mechanical Seal Option:

- ✓ STV (Carbon Vs Ceramic / Tc with NBR Elastomer)
- ✓ CCV (Carbon Vs Ceramic / Tc with Viton Elastomer)
- ✓ CCT (carbon Vs Ceramic / Tc with PTFE Elastomer)

Applications:

- ✓ Dewatering, mud, marine, effluent, hotel, oils, spirits, swimming pools, gas oils.
- ✓ Vessels, industrial-pumping petroleum products, chemical.
- ✓ Civil construction-dewatering foundations, trenches and pits, Public utilities.
- ✓ Filter press feeding, ETP, STP, waste water treatment plant, sewage pumping.
- ✓ Mobile machinery – cooling water for marine engines and shovels.
- ✓ Pier, excavations, pits, pot-holes etc., gram panchayats, municipality public health departments, large housing colonies, industries like chemical, pharmaceuticals, food, cement, paper, sugar, salt, steel an other for liquid cargo from freighter, barges.

JMP-M SERIES

SINGLE STAGE HORIZONTAL,
NON-CLOG SELF PRIMING,
MUD/SEWAGE MONOBLOCK PUMPS



Operating Data:

Capacity	: Up to 75 m ³ /hr
Head	: Up to 48 Mtr.
Suc. Head	: Up to 5 Mtr.
Discharge Size	: 40 mm to 80 mm
Solid Size	: Up to 25 mm
Temperature	: Up to 110°C
Speed	: Up to 3500 rpm
Pressure	: Up to 4.8 kg/cm ²
M.O.C.	: C.I., C.S., SS-304 / 304L, SS316 / 316L, Bronze, Alloy-20, CD4MCU, Hast alloy B & C, etc.
Voltage / Phase	: from 180 to 240 volts for single phase from 380 to 440 volts for three phase

Applications:

- ✓ Dewatering, mud, marine, effluent, hotel, oils, spirits, swimming pools, gas oils.
- ✓ Vessels, industrial-pumping petroleum products, chemical.
- ✓ Civil construction-dewatering foundations, trenches and pits, Public utilities.
- ✓ Filter press feeding, ETP, STP, waste water treatment plant, sewage pumping.
- ✓ Mobile machinery – cooling water for marine engines and shovels.
- ✓ Pier, excavations, pits, pot-holes etc., gram panchayats, municipalitie public health departments, large housing colonies, industries like chemical, pharmaceuticals, food, cement, paper, sugar, salt, steel an other for liquid cargo from freighter, barges.



JLSP SERIES

HIGH SPEED LIGHT DUTY
SEWAGE AND EFFLUENT
SUBMERSIBLE PUMPS



Operating Data:

Capacity	: Up to 132 m ³ /hr
Head	: Up to 40 Mtr.
Temperature	: 45°C
HP	: 0.75 to 10 (1 to 3 HP in single phase)
RPM	: Up to 2880
Delivery Size	: 32 mm to 100 mm
Solid Size	: 50 mm
Connection	: DOL
Voltage & Phase	: 415 V , 3 Phase / 215 V, 1 Phase Up to 3 HP
Insulation/Protection	: 'F' Class / IP 68
Motor	: Two pole continues duty dry type squirrel cage Induction Motor
Cable	: PVC Insulated Double heated Copper Conductor Flexible Cable
Mechanical Seal	: Bi-Directional Twin Mechanical Seal with Various face combination looking to the application.
M.O.C.	: C.I., C.S. Optional Parts : Impeller, Casing, Wear Plate with Various M.O.C. Bronze, CF8, CF8M, CD4MCU

Applications:

- ✓ Muddy water transfer.
- ✓ Swimming pool.
- ✓ Dewatering of ponds, basement of huge building.
- ✓ Power plant.
- ✓ Effluent transfer, ETP,STP, waste water treatment plant.
- ✓ Used in hotel, hospitals, railways, dairy, chemical industry, sugar, steel, cement, food beverages etc.

JHSP SERIES

LOW SPEED HEAVY DUTY
SEWAGE AND EFFLUENT
SUBMERSIBLE PUMPS



Operating Data:

Capacity	: Up to 500 m ³ /hr
Head	: Up to 45 Mtr.
Temperature	: 45°C
HP	: 2 to 50
RPM	: Up to 1500
Delivery Size	: 65 mm to 200 mm
Solid Size	: 100 mm
Connection	: DOL, Star Delta, ATS
Voltage & Phase	: 415 V , 3 Phase
Motor	: Four / Six pole continues duty dry type squirrel cage Induction Motor
Cable	: PVC Insulated Double heated Copper Conductor Flexible Cable
Insulation/Protection	: 'F' Class / IP 68
Mechanical Seal	: Bi-Directional Twin Mechanical Seal with Various face combination looking to the application.
M.O.C.	: C.I., C.S. Optional Parts : Impeller, Casing, Wear Plate with Various M.O.C. Bronze, CF8, CF8M, CD4MCU

Applications:

- ✓ Muddy water transfer.
- ✓ Swimming pool.
- ✓ Dewatering of ponds, basement of huge building.
- ✓ Power plant.
- ✓ Effluent transfer, ETP,STP, Waste water treatment plant.
- ✓ Used in hotel, hospitals, railways, dairy, chemical ind, sugar, steel, cement, food, beverages etc.



JLSPC SERIES

LIGHT DUTY SEWAGE AND
EFFLUENT SUBMERSIBLE
WITH CUTTER PUMP



Operating Data:

Capacity	: Up to 132 m ³ /hr
Head	: Up to 40 Mtr.
Temperature	: 45°C
HP	: 0.75 to 10 (1 to 3 HP in single phase)
RPM	: Up to 2880
Delivery Size	: 32 mm to 100 mm
Solid Size	: 50 mm
Connection	: DOL
Voltage & Phase	: 415 V , 3 Phase / 215 V, 1 Phase Up to 3 HP
Insulation/Protection	: 'F' Class / IP 68
Motor	: Two pole continues duty dry type squirrel cage Induction Motor
Cable	: PVC Insulated Double heated Copper Conductor Flexible Cable
Mechanical Seal	: Bi-Directional Twin Mechanical Seal with Various face combination looking to the application.
M.O.C.	: C.I., C.S. Optional Parts : Impeller, Casing, Wear Plate with Various M.O.C. Bronze, CF8, CF8M, CD4MCU
Cutter M.O.C.	: C.I., CF8M, CF8, CD4MCU, etc.

Applications:

- ✓ Muddy water transfer.
- ✓ Swimming pool.
- ✓ Dewatering of ponds, basement of huge building.
- ✓ Power plant.
- ✓ Effluent transfer, ETP/STP, waste water treatment plant.
- ✓ Used in hotel, hospitals, railways, dairy, chemical industry, sugar, steel, cement, food beverages etc.

JOSP SERIES

SUBMERSIBLE MONOSET PUMPS



Operating Data:

Head	: Up to 55 Mtr.
Capacity	: Up to 450 m ³ /hr
Discharge Size	: 25 mm to 150 mm
Power Rating	: 1.0 HP to 50 HP – Three phase 0.5 HP to 2.0 HP – Single phase
Voltage Range	: 380 V to 415 V – Three phase 200 V to 240 V – Single Phase
Speed	: Up to 2880 rpm
M.O.C.	: C.I., CS

Applications:

- ✓ Gardening and irrigation.
- ✓ Agriculture, farms, civil application.
- ✓ Industries for clear water handling, cooling tower.
- ✓ Water supply for domestic use in apartments, building commercial complexes, hotels, swimming pools, automobile service station, hospitals, Clubs, hostels.
- ✓ Power plant, fire fighting.



JMBP SERIES

HORIZONTAL CENTRIFUGAL
MONOBLOCK PUMPS



Operation Data:

Capacity	: up to 120 m ³ /hr
Head	: up to 85 m
Discharge Size	: up to 150 mm
Power Rating	: 1.0 HP to 30 HP - Three Phase 0.5 HP to 2.0 HP - Single Phase
Voltage Range	: 380 V to 415 V - Three Phase 200 V to 240 V - Single Phase
Temperature	: up to 90°C
Speed	: up to 2900 rpm
M.O.C.	: C.I., C.S., SS-304, SS-316, Bronze, etc.

Applications:

- ✓ Gardening and irrigation.
- ✓ Agriculture, farms, civil application.
- ✓ Industries for clear water handling, cooling tower.
- ✓ Water supply for domestic use in apartments, building commercial complexes, hotels, swimming pools, automobile service station, hospitals, Clubs, hostels.
- ✓ Power plant, fire fighting.

JSSM SERIES

SS FABRICATED CENTRIFUGAL
MONOBLOCK PUMPS



Operation Data:

Capacity	: up to 200 m ³ /hr
Head	: up to 75 m
Discharge Size	: up to 80mm
Liquid Temperature	: 110°C
Ambient Temperature	: 40°C
Suction Lift	: 7m
Speed	: up to 2900 rpm
Sealing	: Mechanical Seal
M.O.C.	: SS304, SS316

Applications:

- ✓ Industrial Water Supply
- ✓ Food Process Industry
- ✓ Water Treatment Plants
- ✓ Farm irrigation
- ✓ Swimming Pool
- ✓ Cooling & Air Conditioning
- ✓ Process water system and cleaning system



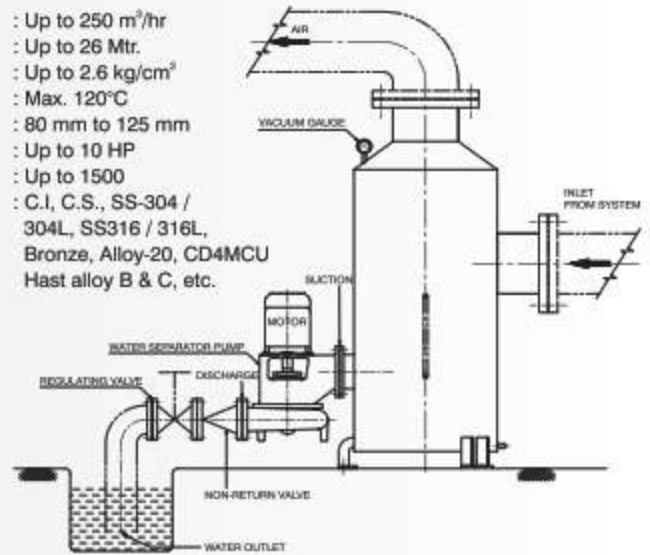
JWSP SERIES

WATER SEPARATOR PUMPS
FOR PAPER INDUSTRIES



Operating Data:

Capacity	: Up to 250 m ³ /hr
Head	: Up to 26 Mtr.
Pressure	: Up to 2.6 kg/cm ²
Temperature	: Max. 120°C
Discharge Size	: 80 mm to 125 mm
HP	: Up to 10 HP
RPM	: Up to 1500
M.O.C.	: C.I., C.S., SS-304 / 304L, SS316 / 316L, Bronze, Alloy-20, CD4MCU Hast alloy B & C, etc.



JFP SERIES

FIRE FIGHTING PUMPS



Pump Type:

- Horizontal Centrifugal End Suction Pumps
- Horizontal Split Casing Pumps
- Vertical Turbine Pumps
- Horizontal Centrifugal Multistage High Pressure Pumps
- Horizontal Centrifugal Monoblock Pumps
- Vertical Inline Pumps

Operation Data:

Capacity	: up to 5000 m ³ /hr
Head	: up to 350 m
Speed	: up to 3500 rpm
Pressure	: up to 35 bar
Coupling	: Motor Driven, Engine Driven
M.O.C.	: Cast Iron and Bronze

Applications:

- ✓ High Rise Buildings
- ✓ Jetties
- ✓ Marine Application
- ✓ Airports & Ports
- ✓ Petrochemical Industries and Gas Plants
- ✓ Power stations and transformer stations
- ✓ Manufacturing Plants
- ✓ Warehouses



JVI SERIES

VERTICAL INLINE
MULTISTAGE PUMPS



Operating Data:

Capacity	: up to 250 m ³ /hr
Head	: up to 300 m
Discharge Size	: 32mm To 100 mm
Temperature	: -15°C to 120°C
Speed	: up to 2900 rpm
Pressure	: up to 30 bar
Sealing	: Mechanical Seal
Flange type	: Round Flange, PJE Coupling, Oval Flange
M.O.C.	: Cast Iron, SS304, SS316

Applications:

- ✓ For thin, non-explosive, not containing solid particles or fibers, noncorrosive liquids are suitable.
- ✓ For liquid transfer, circulation and pressure boosting of cold or hot clean water.
- ✓ For water supply systems, pressure boosting systems, liquid transfer and irrigation works.

JH SERIES

HORIZONTAL MULTISTAGE
PUMPS



Operating Data:

Capacity	: upto 28 m ³ /hr
Head	: up to 77 m
Discharge Size	: 25 mm to 50 mm
Power Range	: 0.37 – 7.50 kW
Temperature	: up to 104°C
Speed	: up to 2900 rpm
Pressure	: up to 7 bar
Sealing	: Mechanical Seal
M.O.C.	: Cast Iron, SS304, SS316

Applications:

- ✓ The pump shall be designed for liquids which are non-aggressive and non-explosive, without solids or fibres
- ✓ Liquid transfer and circulation of liquids within light industry and farming
- ✓ Pressure boosting in single-pump and multi pump booster systems
- ✓ Domestic water supply
- ✓ Cooling systems
- ✓ Air-conditioning systems
- ✓ Washing and cleaning systems
- ✓ Water treatment

JPS SERIES

PRESSURE BOOSTER SYSTEMS



Operating Data:

Capacity	: up to 16 m ³ /hr
Head	: up to 60 m
Temperature	: up to 40°C
Speed	: up to 2900 rpm
Pressure	: up to 10 bar
M.O.C.	: C.I., SS304, SS316

Features:

- ✓ Compact design
- ✓ Easy to Install and operate
- ✓ Reduce energy consumption
- ✓ Maintains constant pressure
- ✓ Adjustable output pressure settings
- ✓ Digital display to monitor the pump speed, pressure, etc.
- ✓ Protect from Dry run, over load, unbalanced Voltage, short circuit, etc.

Applications:

- ✓ Domestic Water supply are pressure boosting
- ✓ Small buildings
- ✓ Villas
- ✓ Schools
- ✓ Garden, etc.

HYPN SERIES

PRESSURE BOOSTING HYDRO-PNEUMATIC SYSTEM



Operating Data:

Capacity	: up to 1200 m ³ /hr
Head	: up to 300 m
Temperature	: up to 70°C
Speed	: up to 2900 rpm
Pressure	: up to 10 bar
M.O.C.	: C.I., SS304, SS316

Applications:

- ✓ Constant Pressure of Water Supply for Hotels
- ✓ Apartments
- ✓ Commercial Buildings
- ✓ Industries
- ✓ Agriculture
- ✓ Other large Multi-storey Buildings

Pumped Liquids:

- ✓ Clean
- ✓ Non-aggressive
- ✓ Non-explosive
- ✓ Thin
- ✓ Clear Water without Abrasives
- ✓ Solid Particles are Fibre



JSTP SERIES

VERTICAL "IN-LINE" SELF-PRIMING
LIQUID RING CENTRIPETAL PUMP



Operating Data:

Capacity	: upto 21 m ³ /hr
Head	: up to 35 m
Discharge Size	: up to 65 mm
Temperature	: up to 150°C
Speed	: up to 1450 rpm
Pressure	: 3.5 kg/cm ²
M.O.C.	: Cast Iron, SS316

Features:

- ✓ High head low capacity pump.
- ✓ Excellent for handling solvents from barrels and from tank farms to the charging vessels.
- ✓ Seal leakage can easily be detected from window in priming chamber.
- ✓ Pump can take negative lift from 3 to 5 meters.
- ✓ Maintenance is easier, Drain arrangement is standard.
- ✓ Compact design - requires less space, No grouting required.
- ✓ Note: Since the pump is having close tolerance and always fitted with mechanical seal it is advisable to have a suitable strainer before pump inlet.

Applications:

- ✓ Chemicals
- ✓ Pharmaceutical
- ✓ Solvent transfer handling

JWJ SERIES

HIGH PRESSURE TRIPLEX
PLUNGER PUMP



Operating Data:

Capacity	: up to 300 m ³ /hr
Pressure	: up to 1500 kg/cm ²
Discharge size	: Customised
Temperature	: Customised
M.O.C.	: C.I., SS304, SS316

Applications:

- ✓ Reverses Osmosis
- ✓ Boiler Feed
- ✓ Spray Dryer
- ✓ Hydro Testing
- ✓ High Pressure Homogenizing
- ✓ Processes Industries
- ✓ Jet Cleaning Applications
- ✓ Food Processing
- ✓ Drain & Sewer Cleaning
- ✓ Pressure Wash
- ✓ Filter Press
- ✓ Pulp & Paper Industries
- ✓ Waterie
- ✓ High Pressure Mobile Oil Field and Drilling Mud Pumps
- ✓ High Pressure Mobile Washing Truck and High Pressure Sewage Cleaning
- ✓ Boiler, Condensor High Pressure Jetting & Tube Cleaning
- ✓ Road Equipment and Construction Equipment



JWM SERIES

METERING DOSING PUMP



Operating Data:

Capacity	: up to 8 m ³ /hr
Pressure	: 200 kg/cm ²
Discharge size	: Customised
Temperature	: Customised
M.O.C.	: SS304, SS316

Features:

- ✓ JEE Pumps Make Diaphragm Gland Less Pumps.
- ✓ Leak Free Operation.
- ✓ Steady State Metering Accuracy of +/- 1% Of Pump
- ✓ Output, at Single Setting of Stroke from 10%-100%.
- ✓ Reproducibility (Repeatability) Better Than +/- 1.5% of Set Point.
- ✓ Inbuilt Pressure Relief & Vacuum Valve on the Hydraulic Side to Safeguard System.
- ✓ Can Easily Handle Most of the Liquids.
- ✓ Simplex Arrangements of Pumps Available for Universal Use
- ✓ Heating or Cooling Jackets for Liquid Head Available.
- ✓ PTFE Diaphragm.
- ✓ Standards: AISI 304 And AISI 316
- ✓ Raw Material: Monel, Alloy 20, Hast Alloy B, Propylene, Hast Alloy C, Titanium, Gft, PP.
- ✓ PTFE And PVC.

Applications:

- ✓ Chemical Detergents, Institutes Food & Beverages, Fertilizers Water Treatment Plants, Steel Textiles, Paper, Pharmaceuticals, Power Plant & Boiler.

SOLAR PUMP



Operating Data:

Capacity	: up to 540 m ³ /day
Head	: up to 463 m
Power Range	: 0.5 Hp to 20 Hp (0.37kW to 15kW)

Operating Conditions:

Ambient temperature	: +50°C
Liquid temperature	: 0°C to +80°C
Water pH	: 6.5 – 8
Sand content	: 25g/m ³

Features & Benefits:

- ✓ Highly energy efficient submersible solar water pump with energy efficient inverter duty motor.
- ✓ High efficiency solar photovoltaic panels with a service life of minimum 20 years.
- ✓ Robust design Galvanized steel mounting structure for long life.
- ✓ High technology automatic controller with dynamic MPPT (maximum power point tracking) control method.
- ✓ The controller offers complete protection against under and over voltage and dry run protection for the pump.
- ✓ Highly efficient controller with a conversion efficiency of 98%.
- ✓ The controller is tropicalized to operate satisfactorily with an ambient temperature of up to 50°C.
- ✓ Virtually no maintenance cost.
- ✓ Environmentally friendly air and noise pollution free solution.

Applications:

- ✓ Flood irrigation of small fields.
- ✓ Drip irrigation for farms.
- ✓ Cattle watering.
- ✓ Water supply for small villages, schools, hospitals and homes.



INDUCTION MOTOR



Applications:

Type	: Squirrel Cage Induction Motor - IE2, IE3 & IE4
Power Range	: 0.5HP to 3.0 HP, 0.5HP to 425HP
Frame Size	: 63 to 355 L
Speed	: 2900 / 1450 / 960 / 740 rpm
Version	: 1ph - CST / CSCR, 3ph - DOL / SD
Insulation Class	: "B" / "F" Class
Protection	: IP 44 / IP 55
Duty	: S1 continuous
Mounting	: Foot (B3) / Flange (B5) / Face (B14) / Foot cum Flange (B35) / Foot cum face (B34)
Direction of Rotation	: Bi-direction3

DOL CONTROL PANEL



Specifications:

Metal Box	: CRC / FRP / Galvanized Sheet with Powder coated (We can Provide design IP55 / IP54 / IP43 / IP65 as per customer requirement)
Contactor	: Schneider / BCH / Chint / ABB (Reputed)
MCB/MCCB	: Schneider / BCH / Teknic / C&S / Indo Asian (Reputed)
Digital Ammeter	: (0 - 30/50/150/450/800 Amps) R-Y-B: Kaizen
Digital Voltmeter	: (0 - 500 Volt) RY-YB-BR: Kaizen
Over Load Protection	: (As per Motor Rating) Variable with 0 to 60 Sec Time
Under Load Protection	: (As per Motor Rating) Variable with 0 to 60 Sec Time
Over Voltage Protection	: (300 * 500 Volt) Variable with 0 to 60 Sec Time
Under Voltage Protection	: (300 * 500 Volt) Variable with 0 to 60 Sec Time
Single Phase Preventer	: With current and Voltage Sensing
Switch	: Auto-Manual
Power and Control wiring	: Copper
Output	: Terminals
Indicating Lamp	: R-Y-B (22.5 sq.mm LED Type)
Push Button	: On / OFF (22.5 sq mm)

TWO PHASE MOTOR CONTROL PANEL



Specifications:

Metal Box	: CRC Sheet with Powder coated
Contactor	: Schneider/ BCH / C&S (Reputed)
MCB/MCCB	: Schneider/ Teknic/ C&S / Indo Asian (Reputed)
Analog Ammeter	: OA - 30A (as per motor current rating)
Analog Voltmeter	: OV - 240V (Single Phase), 0V - 500V (Two Phase)
Starting Capacitor	: As per Customer requirement
Running Capacitor	: As per Customer requirement
Pick up Voltage	: 190 - 240 V
Power And Control wiring	: Copper
Output	: Terminals
Indicating Lamp	: LED Type
Push Button	: On/OFF



SINGLE PHASE SUBMERSIBLE MOTOR CONTROL PANEL



Specifications:

Metal Box	: CRC Sheet with Powder coated
Contactora	: Schneider/ BCH / C&S (Reputed)
MCB/MCCB	: Schneider/ Teknic/ C&S / Indo Asian (Reputed)
Analog Ammeter	: OA - 30A (as per motor current rating)
Analog Voltmeter	: OV - 240V (Single Phase), 0V - 500V (Two Phase)
Starting Capacitor	: As per Customer requirement
Running Capacitor	: As per Customer requirement
Pick up Voltage	: 120- 240 V(Single Phase)
Power And Control wiring	: Copper
Output	: Terminals
Indicating Lamp	: LED Type
Push Button	: On/OFF

STAR DELTA CONTROL PANEL



Specifications:

Metal Box	: CRC / FRP / Galvanized Sheet with Powder coated (We can Provide design IP55/ IP54/ IP43/ IP65 as per customer requirement)
Contactora	: Schneider / BCH / Chmt / ABB (Reputed)
MCB/MCCB	: Schneider / BCH / Teknic / C&S / Indo Asian (Reputed)
Digital Ammeter	: (0 - 30/50/150/450/800 Amps) R-Y-B: Kaizen
Digital Voltmeter	: (0 - 500 Volt) RY-YB-BR Kaizen
Over Load Protection	: (As per Motor Rating) Variable with 0 to 60 Sec Time
Under Load Protection	: (As per Motor Rating) Variable with 0 to 60 Sec Time
Over Voltage Protection	: (300 - 500 Volt) Variable with 0 to 60 Sec Time
Under Voltage Protection	: (300 - 500 Volt) Variable with 0 to 60 Sec Time
Single Phase Preventer	: With current and Voltage Sensing
Switch	: Auto-Manual
Power and Control wiring	: Copper
Output	: Terminals
Indicating Lamp	: R-Y-B (22.5 sq mm LED Type)
Push Button	: On/Off (22.5 sq mm)

AUTO TRANSFORMER STARTER (ATS)



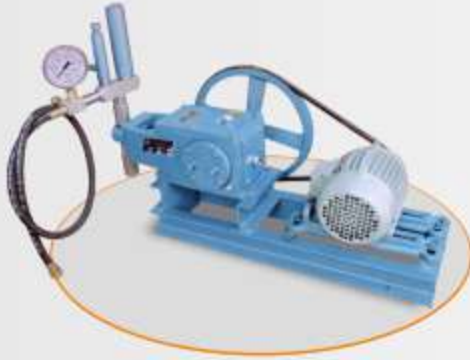
Specifications:

Metal Box	: CRC / FRP / Galvanized Sheet with Powder coated. (We can Provide design IP55/ IP54/ IP43/ IP6S as per customer requirement)
Contactora	: Schneider / BCH / Chint / ABB (Reputed)
MCB/MCCB	: Schneider / BCH / Teknic / C&S / Indo Asian (Reputed)
Digital Ammeter	: (0 - 30/50/150/450/800 Amps) R-Y-B: Kaizen
Digital Voltmeter	: (0 500 Volt) RY-YB-BR: Kaizen
Over Load Protection	: (As per Motor Rating) Variable with 0 to 60 Sec Time
Under Load Protection	: (As per Motor Rating) Variable with 0 to 60 Sec Time
Over Voltage Protection	: (300 • 500 Volt) Variable with 0 to 60 Sec Time
Under Voltage Protection	: (300 - 500 Volt) Variable with 0 to 60 Sec Time
Single Phase Preventer	: With current and Voltage Sensing
Switch	: Auto-Manual
Power and Control wiring	: Copper
Output	: Terminals
Indicating Lamp	: R-Y-B (22.5 sq.mm LED Type)
Push Button	: On/OFF (22.5 sq mm)



JTPM SERIES

MOTORIZED
HYDRAULIC TEST PUMPS



Operating Data:

Capacity	: Up to 150 LPH
Discharge Size	: ½" BSP
Plunger Size	: 12 mm to 24 mm
Pressure	: Up to 700 kg/cm ²
KW / HP	: Up to 3.7 / 5

Applications:

- ✓ Boilers, pressure vessels
- ✓ CI mains, casting
- ✓ Gas cylinder, pipe lines, etc.

Standard Accessories:

- ✓ Brass foot valve
- ✓ G.M. / S.S. check valve
- ✓ Brass pressure release cock
- ✓ Pressure house with attachment
- ✓ Pressure gauge
- ✓ M.S. fabricated pail (Optional)

JTP SERIES

HAND OPERATED
HYDRAULIC TEST PUMPS



Operating Data:

Pressure	: 700 kg/cm ² max.
Discharge Size	: ½" BSP
Pail Size	: 22 ltr
Plunger Size	: 12 mm to 24 mm
Out put CC/Stroke	: 5.65 to 15.70

Applications:

- ✓ Boilers, pressure vessels.
- ✓ C.I. Mains, casting, gas cylinders, pipe lines.
- ✓ Tubes, pump and other machinery parts subject to hydraulic pressure.

M.O.C.:

- ✓ Having M.S. body, C.I. handle, fulcrum with standard Fitting
- ✓ M.S. Fabricated Pail

Standard Accessories:

- ✓ MS/SS check valve
- ✓ Pressure hose with attachments
- ✓ Brass pressure release cock
- ✓ Pressure gauge



PUMPS SPARES



JEE PUMPS FACILITIES

STORE



With its inventory management service, JEE provides recommendations for maintaining optimum spare parts stocks and preventing excess stocks or shortages of spare parts. Easy to order and available at short notice

DRAWING DEPARTMENT



Drawing Department is a pivot of our company. We use specialised software to design product and parts. Our technical drawing has all the information for manufacturing a part or welding and building an assembly. The info includes dimensions, part names and numbers etc. So once a manufacturing engineer gets the drawing, they can start the production process without a second thought.

CNC DEPARTMENT



We have CNC (Computer Numerical Control) in-house for automating control of machine tools through the use of software embedded in microcomputer attached to the tool.

MACHINING DEPARTMENT



We have hi-tech machinery for manufacturing parts and professional and skilled operators of machines for giving best outcome of our products.

ASSEMBLY DEPARTMENT



We have comprised of professional assembler, engineer and technicians, who specialise in all the work process, including reading, drawings, understanding the assembly process and executing the actual assembly.

Q.C. DEPARTMENT



Our quality inspectors monitors the quality of incoming and out going products or materials for a company. They are tasked with conducting tests, analysing measurements, and overseeing production process. maintains, test and troubleshoot all instrumentation devices. They create an effective, efficient testing protocol to be used across all product lines.

FOUNDRY DEPARTMENT



"IN HOUSE AUTOMATIC CASTING PLANT"

JEE Pumps Limited. is having a in house casting facilities adjusted to their pump manufacture facilities spread over 2500 Sq. Mts. with following.

- Production & Quality check equipment.
- Induction Furnace of 150 Kg & 300 Kg.
- Single Piece casting from 500 Gram to 600 Kg Capacity
- Automated Sand Mixing Plan, Sand Muller, Automated core making machine & Shot Blasting Machine
- Material Handling by 3 Nos. of over head crane of 5 tons capacity each & various size of scissor lifts

MOULDING PROCESS

- Hand Moulding
- Machine Moulding
- Moulding process through molasses sand, Green sand & No bake Sand
- Co2 Moulding & Shell Moulding

QUALITY CONTROL EQUIPMENT

- Temperature Control Pyrometer
- Optical emission Spectrometer
- Electric Heat Treatment Furnace

FINISHING DEPARTMENT



We have a professional finishing supervisor and finishing workers that supervises all production activities (modification, packaging, branding, painting) in the finishing department, thereby ensuring that the goods reach the final consumer in a wholesome manner.

TESTING DEPARTMENT



TESTING FACILITIES AT JEE PUMPS

Due to rising cost of energy running cost of pumps and breakdown cost of plant. It is essential to ensure the accurate performance of pump prior to despatch. A pump is a very important equipment in any process Plant. And if pump fails to perform as desired, will result in costly production loss as well as high energy consumption. To avoid such trouble to our valued customer & to perform our pumps accurately at site. we at our Kubadthal Plant built a world class test bed with following facilities.

Where pump performance can be tested as per various Indian and International Standard. All the instruments used for power, flow & head measurement, vibration & sound level check are calibrated with NABL accredited laboratories with traceability.

TEST FACILITY

The facility is equipped with latest electronic instruments for measurement of

- Flow: Mag flow meters
- Head: Pressure Transmitters,
- Power: Digital power meters
- Speed: Opto-electronic Tachometers
- Sound & Vibration: Sound & Vibration meter with FFT analyser in application,
- Temperature: RTDs



VALUABLE CLIENTS



VALUABLE CLIENTS



CERTIFICATIONS



Our Company approved in



LARSEN & TOUBRO



TATA PROJECTS



GWSSB



Right Pumps
For Right System



CLIENT DETAILS

Company Name _____ Date: _____

Address _____

Type of Industries _____

Contact Person Name & Designation _____ Contact No.: _____

E mail _____

DETAILS FOR PUMP SELECTION

PUMP TYPE: Horizontal Vertical Submersible Self-Priming

PUMP APPLICATION:

Thermic Fluid Process ETP Filtration
 Transfer Loading Unloading STP Others

PUMPING FLUID / LIQUID NAME: _____

Duty: Continuous Intermittent

PRESENCE OF SOLIDS / FOREIGN PARTICLES: Yes No

Solid Size: _____ Specific Gravity: _____

Viscosity: _____ Temperature: _____ pH Value: _____

PUMP PERFORMANCE:

Discharge Capacity in M³/hr. or LPM: _____ Delivery Head / Differential head in Meters: _____

Suction Head in Meters: _____ Discharge Pressure in Kg/cm²: _____

MOC: Stainless Steel (S.S.) Cast Iron (C.I.) Other _____

SHAFT SEALING: Gland Type Mechanical Seal Type

PRIME MOVER: Motor / Engine: _____ KW/HP: _____

Phase: _____ Volts: _____ Hz: _____ RPM: _____

Base Plate, Coupling Guard: Yes No

ANY OTHER INFORMATION:



EXPORT

www.jeepumps.com

TOLL FREE NO:
1800 233 8787



ISO: 9001 : 2015 Certified Company



Head Office:
JEE PUMPS LIMITED
(Formerly Known as JEE PUMPS PRIVATE LIMITED)
Plot No. L-1 & 2, GIDC, Nr. Water Tank, Odhav,
Ahmedabad-382 415, Gujarat (INDIA)
Phone : +91-79-2297 0345 / 0346 / 0347
Fax : +91-79-2297 7724
E-mail : info@jeepumps.com

Works:
JEE PUMPS Limited
(Formerly Known as JEE PUMPS PRIVATE LIMITED)
Block No. 407-B & 408-B, At Kubadthal,
Kubadthal-Pasunj Road, Tal. Dascroi,
Dist. Ahmedabad-382340, Gujarat (INDIA)
M. : +91-9687650614
E-mail : works@jeepumps.com

Authorised Dealer :

