

# *Tomorrow's* Roofing Solutions *Today*







**Mr. Yograj Narang**  
(Chairman, Super group of Companies)



Super group grows through servicing its customers to the gold standards. It is this exceptional service at competitive cost that has helped us grow in steel manufacturing & distribution business through the decades. In SuperColor® we bring the same competitiveness and expertise to color coated sheets, Z&C Purlins and roofing projects.

## AWARDS & CERTIFICATES







# The Future of Roofing

Head quartered in Indore, Super Elements Pvt. Ltd. is a part of Super Group of Companies. One of the biggest steel conglomerates with interests in export, import manufacturing and trading of steel. Super color<sup>®</sup> brings to you the widest range of roofing and cladding solutions, Z&C purlins and a comprehensive range of accessories.

We are manufacturers of pre-painted galvanized, pre-painted Galvalume and bare-Galvalume Trapezoidal Profile Sheets. Z & C purlins / sections & tile (Kavelu pattern) profile sheet. We are frontline distributors of renowned manufacturers for a gamut of products ranging from Galvanized Plain, Galvanized Corrugated, Colour Coated profile sheets and Accessories. We have team well versed in making flawless roofing installations over a range of structures. Contributing to the future of roofing, we are Super Group of Companies.





# World Class Profiles

**SUPERCOLOR® PROFILES ARE MADE OF QUALITY METAL SUBSTRATES WITH HIGH PERFORMING PRE-TREATMENT, PRIMER AND TOPCOAT ALL BROUGHT TOGETHER IN A CAREFULLY CONTROLLED MANUFACTURING PROCESS THAT DELIVERS BEST QUALITY AND PERFORMANCE.**







# SuperColor® Solutions :

**SUPERCOLOR®** HAS A TEAM OF DESIGNER AND ENGINEERS WHO CALCULATE THE BOQ BASED ON THE TRUSS DRAWING AND THE ROOF PLAN SO THAT THERE ARE NO WASTAGES AND TO ENSURE THAT THE EXACT MATERIAL IS SUPPLIED THAT WILL FIT EXACTLY ON THE TRUSSES AND PURLINS.

**Super color®** profiles are precision engineered on the best profiling lines. The profiles are roll-formed on twenty one stage roll forming lines with auto cut-off ensuring consistent and accurately matching profiles. The PLC controlled machines produce accurately formed customised curves. Digitally controlled shear blades maintain the length of the resulting profiles within a millimeter of tolerance.

**Super Color®** profiles are carefully designed to withstand the elements of nature and to last long in adverse environments. Industrial sheds made of these profiles provide you lifelong durability, safety and very low cost-maintenance.

**Super Color®** profiles are made of quality metal substrates with high performing pre-treatment, primer and topcoat all brought together in a carefully controlled manufacturing process that delivers best quality performance. These profiles last for decades and retain their color and gloss over a long period of time.

## **Super Corrosion Resistance:**

A uniform zinc coat on quality substrate is further coated with primers and organic color coats. The coats are baked in high performance Centenary ovens. This process provides better barrier and sacrificial coatings that resist corrosion even in highly saline environments.

## **Super UV Resistance:**

The UV rays penetrate deep into the paint destroying the underlying molecular structure, which results in loss of gloss, fading, chalking, brittleness and loss of coating adhesion. With the use of superior quality and high performance paints like High Durable Polyester (HDP) and Poly Vinylidene Floride (PVDF) we have been able to reduce the effect of UV rays on the sheet and hence been able to improve the life of a shade to many more years.

## **BARE GALVALUME CORROSION PROTECTION :**

BARE Galvalume steel has two important features, Galvanic / Sacrificial protection and barrier protection. Zinc has the sacrificial property, it protects the base metal by exposing it to the atmospheric conditions and Aluminium protects the base metal by acting as a barrier. These properties makes it the best roofing solution.

**Yield Advantage :** Aluminium is lighter than Zinc, which means that for the same material weight, BARE Galvalume steel sheets with 150g/m<sup>2</sup> coating will cover a larger surface area than 150 g/m<sup>2</sup> Zinc coated Galvanized sheets, of equivalent base metal thickness.

BARE Galvalume steel has a lower thermal mass as compared to conventional building materials, so it does not hold heat for long. Super Color sheets are typically supplied with minimum Yield strength of 550 Mpa. For applications that need more formability, steel with minimum yield strength of 275 Mpa, can also be supplied.

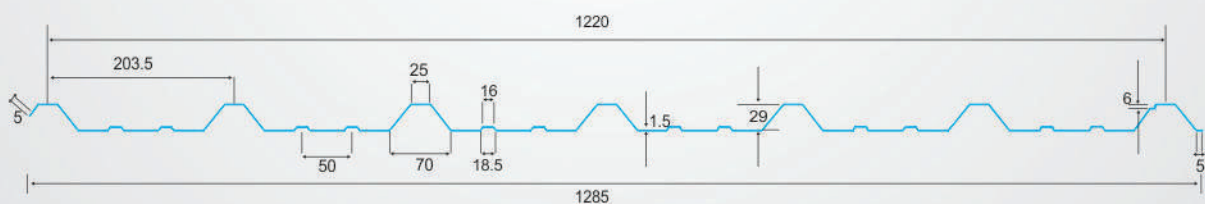
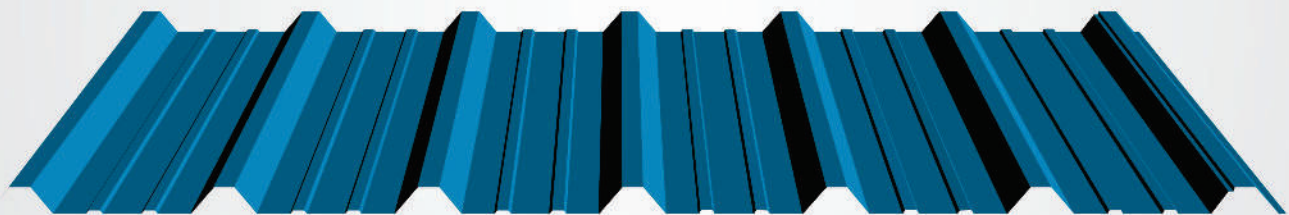




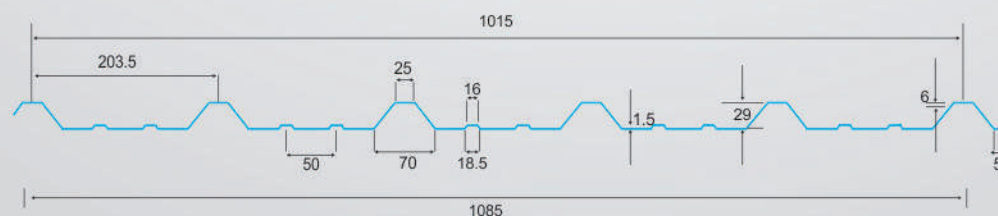
# Pre-Painted Galvanized Steel

**SUPERCOLOR®** 1220mm XL Profile ( Extra wide) profile is specially designed for Stronger roofing applications! This profile offers extra wide coverage with optimum strength which no other profile design in the industry offers. This profile has been designed keeping strength as primary feature and secondly extra wide coverage of the profile! It's optimum pitch and depth ratio lends superior weight bearing capacity, making it profile of choice for roofing and cladding applications! **It is very economical profile as less number of sheets has to be laid to cover the same area, hence the cost of sheeting in the project reduces substantially!**

## SUPERCOLOR® 1220 mm Extra Wide New 4 Feet



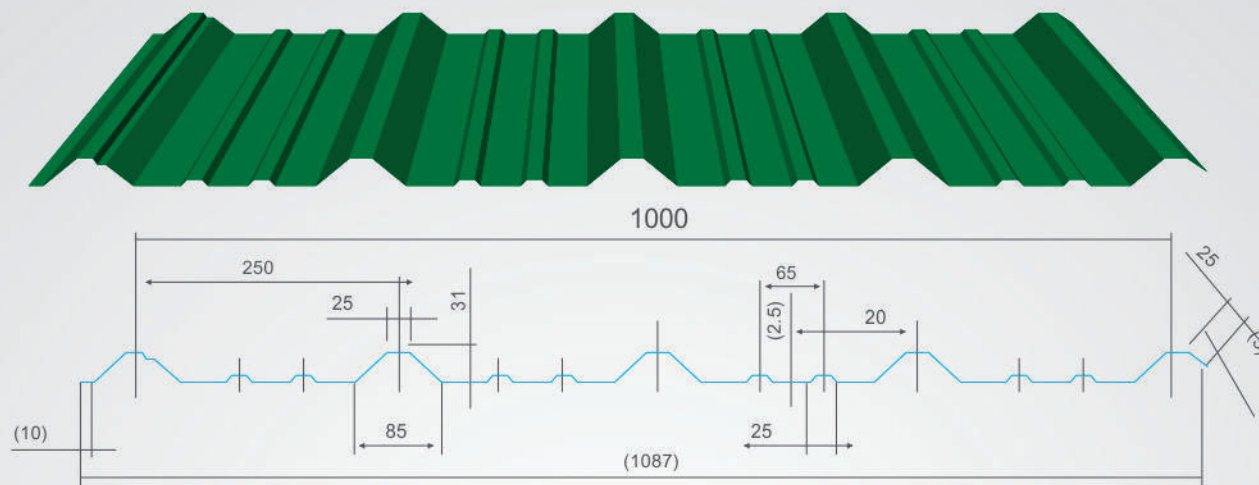
## 3.5 Feet



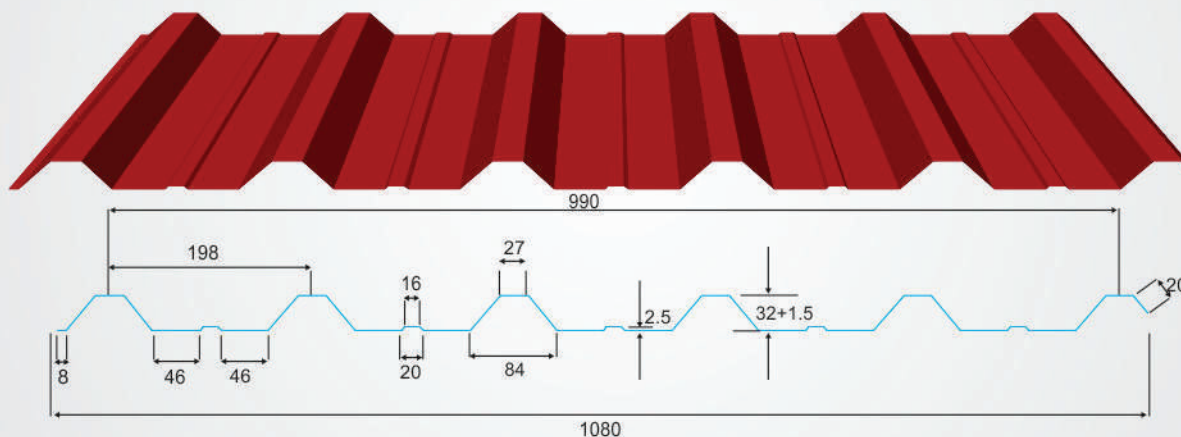


**SUPERCOLOR® 1000 mm 2R** is a specially designed profile for stronger roofing applications. Its optimum pitch and depth ratio lends superior weight bearing capacity, making it the profile of choice. Its unique design makes for a watertight roofing solution with the added advantage of an anti-capillary groove, which ensures a leak proof installation for years to come. The design also prevents moisture built up on fasteners preventing premature corrosion.

## SUPERCOLOR® 1000/1087 mm 2R



## Bhopal HI-RIB Profile Design 990/1080 mm



### Technical Specifications of Pre-Painted Galvanized Steel

Particulars	Details
Total Coat Thickness (TCT)	0.35mm to 0.70 mm (above in special cases)
Zinc Coating	Standards : Z120 gsm, 100 gsm (Higher coatings optional)
Paint Coating	Regular modified polyester (RMP) Optional : Silicon Modified Polyester (SMP) Poly Vinylidene Fluoride (PVDF)
Paint Thickness (Top Coat) Including Primer	25 microns
Paint Thickness (Bottom Coat) Including Primer	12 microns
Tensile strength	550 MPA, standard High Tensile Profile
Products adhering to indian and international standards	IS 14246-1995, JIS G 3312, ASTM A 755 & EN 10169-1
Brands	Super Color, National, JSW

### Technical Specifications of ZN-Al Alloy coated Steel (Bare Galvalume)

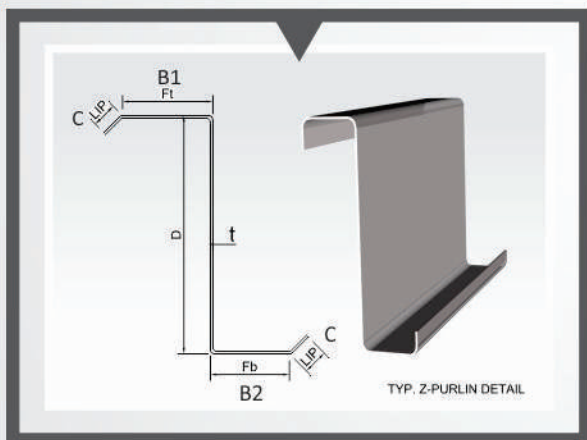
Particulars	Details
Total Coat Thickness (TCT)	0.40 mm to 0.70 mm
Zinc Coating	Standard : A Z 150 gsm A Z 070 gsm
Chemical Composition (Metal Coating)	Al-Zinc alloy with 1.5% Silicon: 55% Aluminium, 43.5% Zinc and 1.5% Silicon
Color	Natural Silver Finish
<b>Pre-painted Galvalume</b>	
Paint Thickness (Top Coat) Including Primer	25 microns
Paint Thickness (Bottom Coat) Including Primer	12 microns
Tensile strength	550 MPA, standard High Tensile Profile
Products adhering to indian and international standards	ASTM A 755, ASTM A 792, JIS G 3321, AS 1397-93 & EN 10326
Brands	Super Color, National, JSW



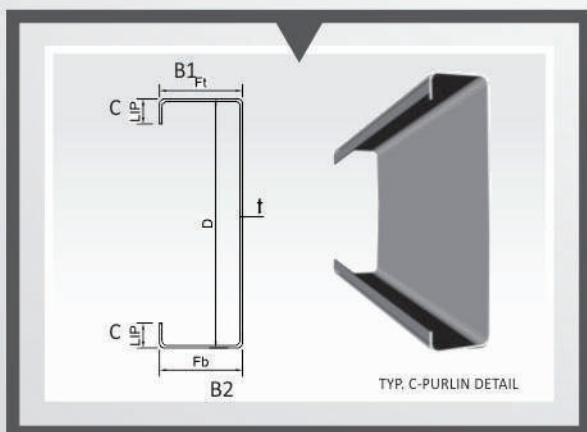


# Z/C - Purlin

**SUPERCOLOR® Z-Section**



Z-Section Sheet (All Dimensions in mm)					
	H	B1	B2	C	T
<b>Z150</b>	150	58	51	15 & 20	1.5-2.5
<b>Z180</b>	180	58	51	15 & 20	1.5-2.5
<b>Z200</b>	200	60	55	15 & 20	1.5-2.5
<b>Z220</b>	220	67	61	15 & 20	1.5-2.5
<b>Z250</b>	250	67	61	15 & 20	1.5-2.5



C-Section Sheet (All Dimensions in mm)					
	H	B1	B2	C	T
<b>C150</b>	150	50	50	15 & 20	1.5-2.5
<b>C180</b>	180	50	50	15 & 20	1.5-2.5
<b>C200</b>	200	58	58	15 & 20	1.5-2.5
<b>C250</b>	250	58	58	15 & 20	1.5-2.5



**OVERLAPPING**



**BUTT CONNECTION**



**Purlins are Available in Mild Steel as well as Galvanized Steel as Per Requirements.**

## Benefits



- A. Saving in steel up to 35%
- B. Saving in construction cost up to 30%
- C. Sections are supplied in exact length & pre-punched holes, there by reducing wastage of steel and fabrication cost.
- D. Saving in construction time
- E. Close Tolerances on sectional dimensions due to process of cold forming.
- F. Economy due to reduction in dead weight on the main frame structure.
- G. Ability to span long lengths.
- H. Fast to erect and easy handling.
- I. Slot Holes in Web and Flanges controlled by PLC.
- J. No site drilling / cutting required.
- K. Custom made section lengths lead to no wastage and speedy erection.

**Z & C Purlins** are structural members designed and produced using modern and advanced technology for use of secondary supports for economical roof sheeting and wall cladding systems in any type of building.

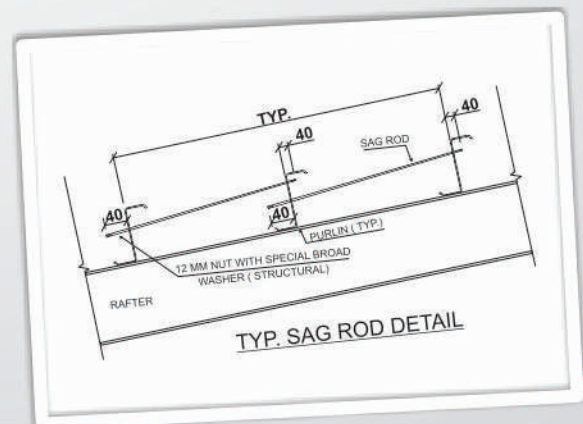
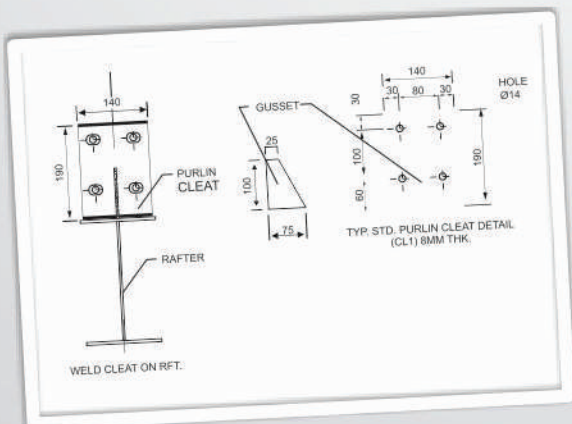
The design of steel structures involves selection of most economical support members to carry loads and withstand direct and induced forces to which the structure may be subjected during its life span. These sections are also available in multiple grades starting from E250 to E410, ST 52, IS 2062.

**Super Z & C Purlins** are gaining popularity with engineers and architects worldwide, due to its wide product range and superior sectional properties which lends greater flexibility to a designer leading to efficient and economical design.

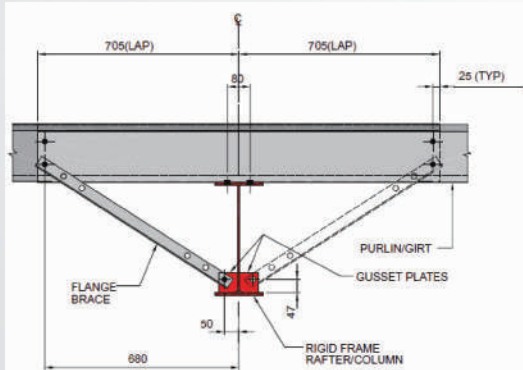
**Super Z & C Purlins** are supplied in customized lengths as per the lengths of the bays with pre-punched holes in slotted pattern for quick bolting. This kind of system gives an excellent strength to weight ratio with flexibility for specific size requirement.

**Slot Holes Options:**

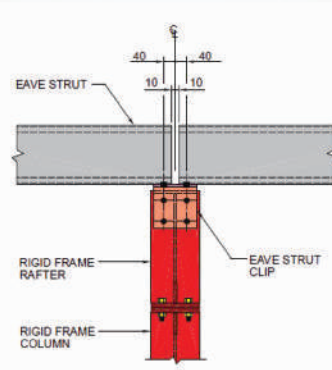
- 1) 14\*22mm
- 2) 18\*36mm



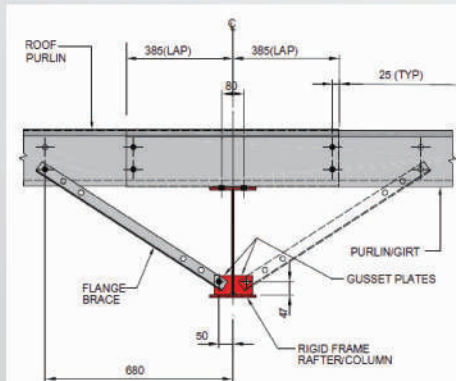
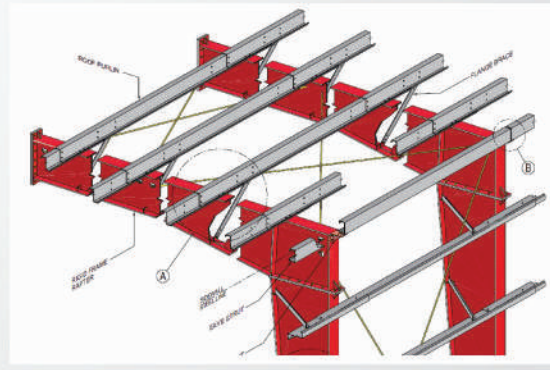




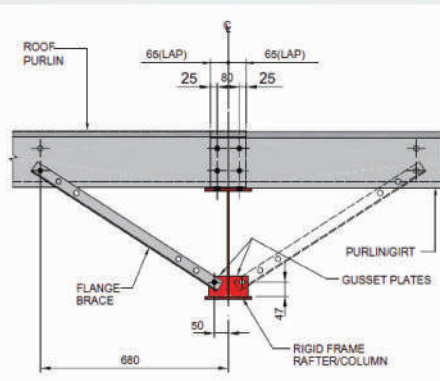
Detail A : Purlin/Girt with long lap



Detail B : Standard Eave strut Connection



Detail C : Purlin/Girt with Continuous Lap



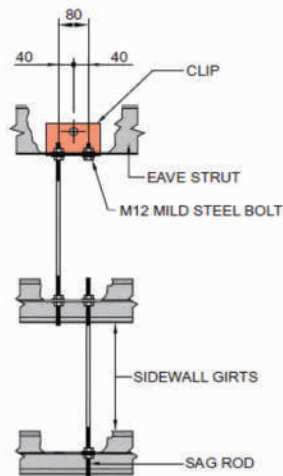
Detail D : Purlin/Girt with Short Lap

**NOTE:**

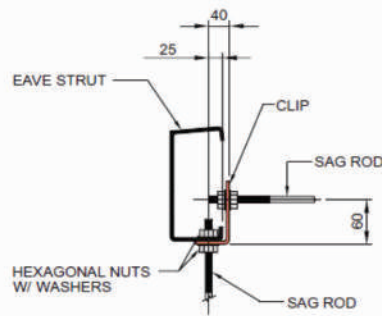
1. ALL BOLTS ARE M12 MILD STEEL BOLTS
2. FOR RAFTER WITH WEB DEPTH THAT IS MORE THAN ONE METER AN ADDITIONAL FLANGE BRACE IS ADDED AS SHOWN IN BROKEN LINES.



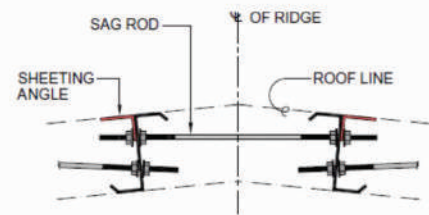
# ISOMETRIC : Sag Rod at bays Exceeding 8.5 Meters Spacing



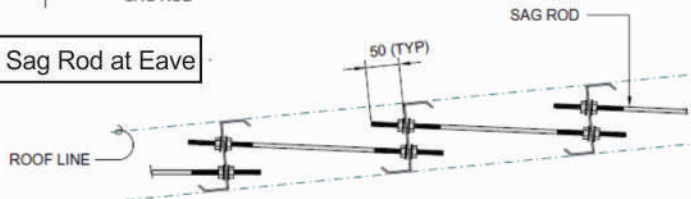
Detail A : Sag Rod at Wall



Detail B : Sag Rod at Eave



Detail C : Sag Rod at Ridge



Detail A : Sag Rod at Roof

SECTION	D (MM)	Ft (MM)	Fb (MM)	t (MM)	Wt. KG/M	LIP (MM)	Area (CM <sup>2</sup> )	Ixx (CM <sup>4</sup> )	Iyy (CM <sup>4</sup> )	ZXt (CM <sup>3</sup> )	ZXb (CM <sup>3</sup> )	Zy1 (CM <sup>3</sup> )	Zy2 (CM <sup>3</sup> )	Rx (CM)	Ry (CM)	COIL WIDTH
(1)	(2)	(3)	(4)	(5)	(6)	(7)	(8)	(9)	(10)	(11)	(12)	(13)	(14)	(15)	(16)	(17)
Z 150 x 1.5	150	58	51	1.5	3.32	15	4.27	150.25	30.59	19.17	18.71	3.49	3.09	5.93	2.68	282
Z 150 x 1.6	150	58	51	1.6	3.54	15	4.55	159.87	32.50	20.40	19.91	3.71	3.29	5.93	2.67	282
Z 150 x 1.8	150	58	51	1.8	3.98	15	5.11	178.97	36.27	22.85	22.29	4.15	3.68	5.92	2.66	282
Z 150 x 2.0	150	58	51	2.0	4.43	15	5.67	197.88	39.98	25.27	24.64	4.59	4.06	5.91	2.66	282
Z 150 x 2.5	150	58	51	2.5	5.53	15	7.05	244.30	48.98	31.21	30.44	5.65	5.00	5.89	2.64	282
Z 180 x 1.5	180	58	51	1.5	3.65	18	4.81	235.26	34.39	25.37	24.72	3.91	3.48	6.99	2.67	310
Z 180 x 1.6	180	58	51	1.6	3.89	18	5.13	250.36	36.55	27.01	26.31	4.16	3.70	6.99	2.67	310
Z 180 x 1.8	180	58	51	1.8	4.38	18	5.76	280.49	40.80	30.26	29.48	4.65	4.14	6.98	2.66	310
Z 180 x 2.0	180	58	51	2.0	4.87	18	6.39	310.31	44.99	33.48	32.62	5.14	4.58	6.97	2.65	310
Z 180 x 2.5	180	58	51	2.5	6.08	18	7.95	383.70	55.16	41.42	40.34	6.33	5.64	6.95	2.63	310
Z 200 x 1.5	200	60	55	1.5	3.94	15	5.11	303.50	34.84	29.32	28.77	3.93	3.62	7.71	2.61	335
Z 200 x 1.6	200	60	55	1.6	4.21	15	5.45	323.08	37.02	31.21	30.62	4.18	3.85	7.70	2.61	335
Z 200 x 1.8	200	60	55	1.8	4.73	15	6.12	362.00	41.34	34.98	34.32	4.68	4.31	7.69	2.60	335
Z 200 x 2.0	200	60	55	2.0	5.26	15	6.79	400.60	45.58	38.71	37.98	5.17	4.76	7.68	2.59	335
Z 200 x 2.5	200	60	55	2.5	6.57	15	8.45	495.85	55.91	47.93	47.02	6.37	5.86	7.66	2.57	335
Z 200 x 1.5	200	67	61	1.5	4.13	18	5.40	329.61	50.54	31.68	31.07	4.93	4.52	7.82	3.06	351
Z 200 x 1.6	200	67	61	1.6	4.41	18	5.75	350.89	53.72	33.73	33.08	5.24	4.81	7.81	3.06	351
Z 200 x 1.8	200	67	61	1.8	4.96	18	6.51	398.31	63.19	38.05	37.67	5.91	5.64	7.82	3.12	351
Z 200 x 2.0	200	67	61	2.0	5.51	18	7.17	435.25	66.25	41.85	41.04	6.49	5.95	7.79	3.04	351
Z 200 x 2.5	200	67	61	2.5	6.89	18	8.92	538.83	81.43	51.83	50.82	8.01	7.34	7.77	3.02	351
Z 220 x 1.5	220	67	61	1.5	4.42	18	5.70	411.98	50.54	36.21	35.49	5.03	4.62	8.50	2.98	375
Z 220 x 1.6	220	67	61	1.6	4.71	18	6.07	438.65	53.73	38.55	37.79	5.36	4.91	8.50	2.97	375
Z 220 x 1.8	220	67	61	1.8	5.30	18	6.87	497.84	63.20	43.48	43.02	6.03	5.77	8.51	3.03	375
Z 220 x 2.0	220	67	61	2.0	5.89	18	7.57	544.35	66.26	47.85	46.90	6.63	6.07	8.48	2.96	375
Z 220 x 2.5	220	67	61	2.5	7.36	18	9.42	674.28	81.44	59.29	58.11	8.18	7.50	8.46	2.94	375
Z 250 x 1.5	250	67	61	1.5	4.78	18	6.15	557.11	50.55	43.41	42.53	5.17	4.74	9.52	2.87	406
Z 250 x 1.6	250	67	61	1.6	5.10	18	6.55	593.25	53.74	46.23	45.29	5.50	5.05	9.52	2.86	406
Z 250 x 1.8	250	67	61	1.8	5.74	18	7.41	673.13	63.20	52.12	51.57	6.20	5.93	9.53	2.92	406
Z 250 x 2.0	250	67	61	2.0	6.37	18	8.17	736.64	66.28	57.41	56.24	6.81	6.24	9.50	2.85	406
Z 250 x 2.5	250	67	61	2.5	7.97	18	10.17	9.48	2.83	71.18	69.73	8.40	7.70	913.12	81.45	406



# Pre-Painted Galvanized & Alu-Zinc Sheets



## BENEFITS

- Classical Mangalorean Metal Tiles
- Strength of STEEL.
- Architectural Attractiveness and Durability
- Easy to Assemble, Time and Labour Saving
- Resistant to Fire and all weather Conditions
- Does not break, Crack or Leak
- Light Weight, Environment-Friendly
- Low Maintenance Costs

## APPLICATIONS

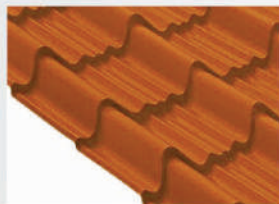
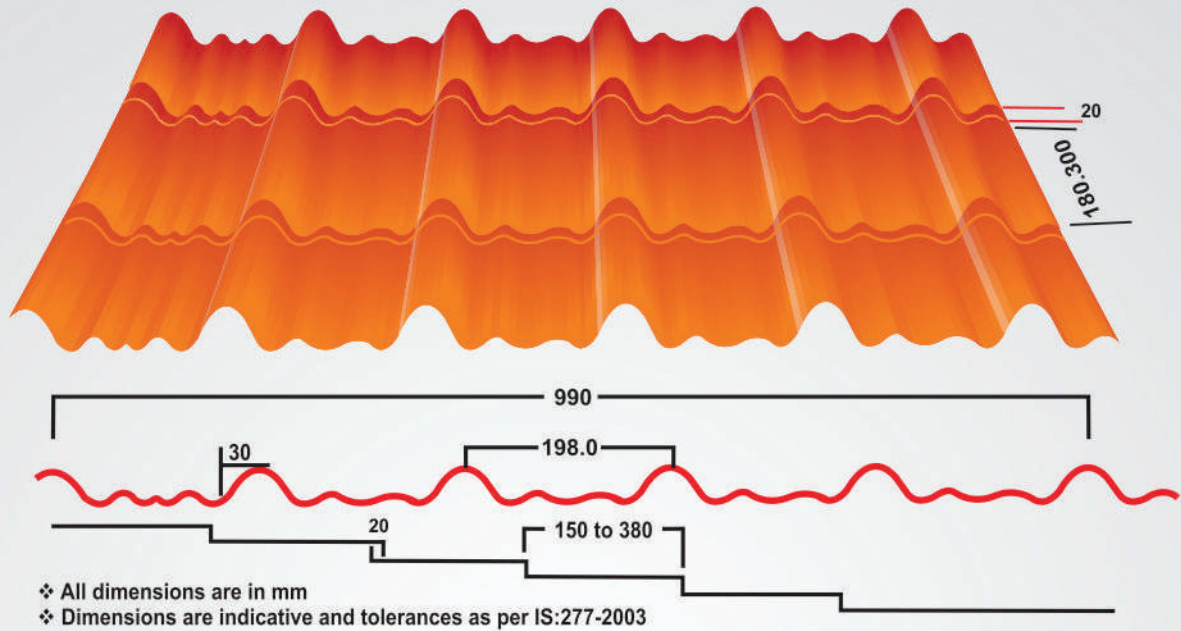
- **Residential:** Row Houses, Bungalow etc.
- **Commercial:** Shopping Centers, Resorts, Hotel etc.
- **Industrial:** Porches, Slant Roof Slabs etc.
- **Agricultural:** Farm Houses etc.
- **Institutional:** College, School Building etc.



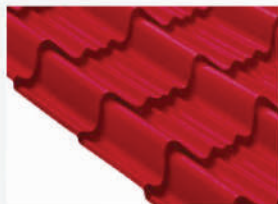
# Tile Profile

Base Material :

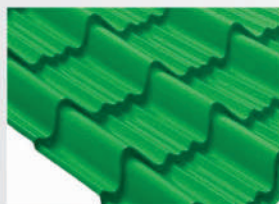
Colour Coated Steel As per IS 14246-95



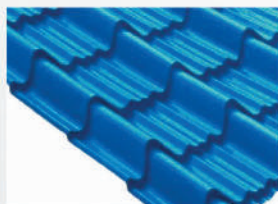
Brick Red



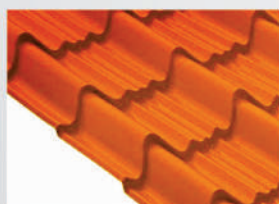
Seco Red



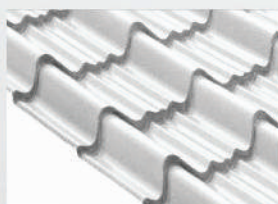
Grass Green



Firoza Blue



Terracotta



Off White

For Tile Profile, the roof slope should be minimum 20 degrees and purlin to be provided on every alternate tile. If your roof length is 34 feet, you can take 3 sheets of 12 feet.

Material Confirms to: ASTM A653/ A755, IS 277, JIS3312/3322, AS 1397

Technical Specifications of  
Pre-Painted Alu-Zinc Steets (Galvalume)  
(55% Aluminum, 45% Zinc Alloy)

Pre-Painted Alu-Zinc Steel Steets (GI-Base)

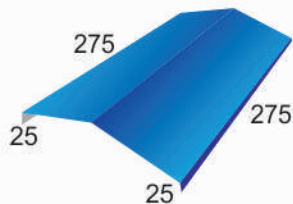
Particulars	Details
Alu-Zinc coating/ Zinc coating	AZ 150/70 Z 120/100
Primer service coat	5 microns epoxy on both sides
Paint Coating	Regular Modified Polyester (RMP) (Optional-Silicon Modified Polyester & PVF 2)
Top Coat Thickness (Top)	15 to 18 microns
Bottom Coat Thickness (Bottom)	5 to 7 microns
Surface paint reflection	Glossy finish (Optional-Matt Finish)
Conforms to	ASTM A653 / A755, IS277, JIS3312 / 3322, AS1397



# SUPER COLOR®

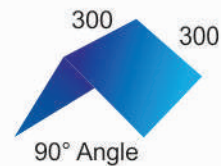
## Plain Accessories

Plain Ridge



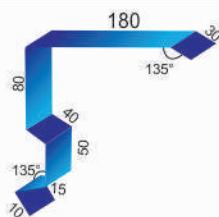
\* Length : 2440 mm  
\* Width : 600/800mm

Barge Board



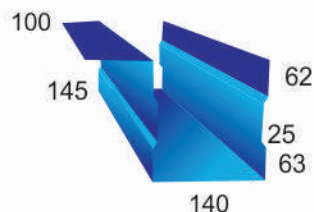
\* Length : 2440 mm  
\* Width : 600mm

Gable Flashing



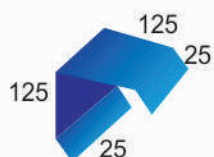
\* Length : 2440 mm  
\* Width : 600mm

Eaves Gutter



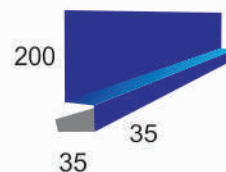
\* Length : 2440 mm  
\* Width : 600mm

Corner Flashing  
(Wall to Wall)



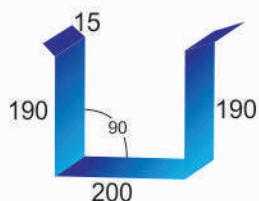
\* Length : 2440 mm  
\* Width : 300mm

Bottom Flashing



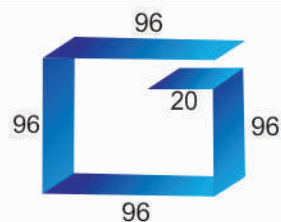
\* Length : 2440 mm  
\* Width : 310mm

Box Gutter



\* Length : 2440 mm  
\* Width : 600/800mm

Down-Take Pipe



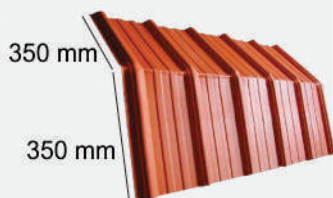
\* Length : 2440 mm  
\* Width : 400mm

# SUPER COLOR®

## Trapezoidal Accessories

Profile Ridge

Length 1087 mm



Profile Northlight Curvature

Length 1087 mm  
Width 900 mm



Profile Arc



Curved Profile Sheets

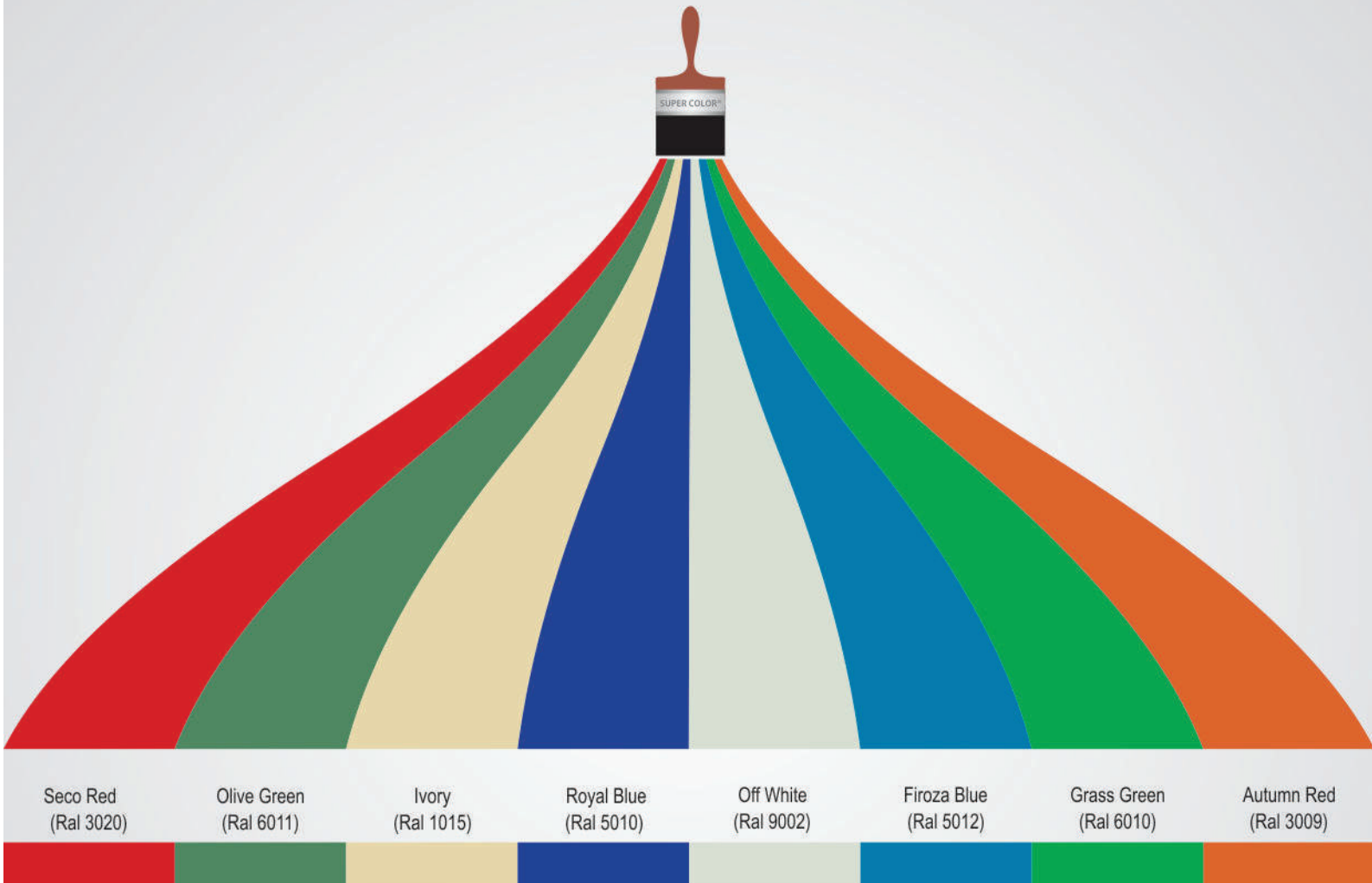


Sheets can be Curved as Per Provided Radius



# SUPER COLOR®

## Shades Offered



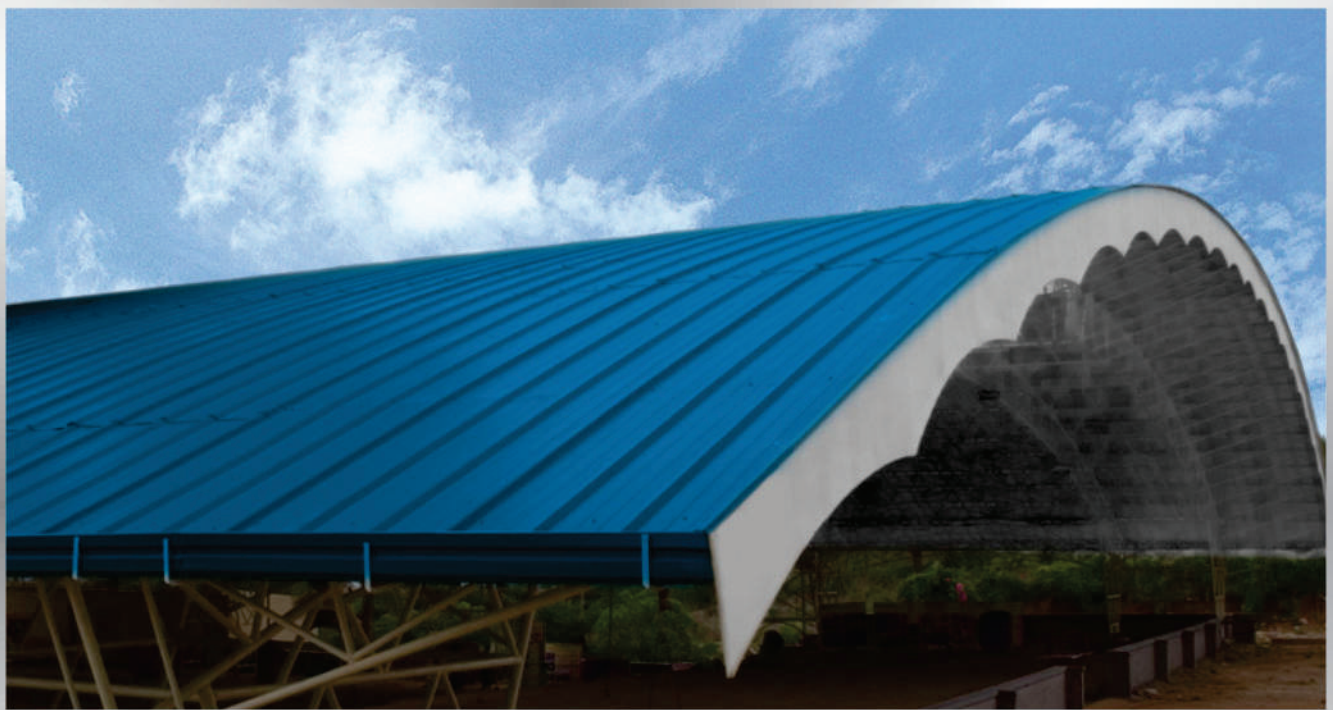
### Some of Our Esteemed Projects:

Ambika Solvex, Kalapipal.  
Ambika Solvex, Sagar.  
Bhandari Foils, Dewas.  
Century 21 Malls, Indore  
Choithram School and Hospital, Indore.  
Country Club, Indore.  
Dainik Bhaskar, Ahmedabad.  
Dainik Bhaskar, Bangalore.  
Dainik Bhaskar, Jaipur.  
Delhi Public School, Indore.  
Eicher Motors, Pithampur  
Tata Motors & Tractors, Mandideep  
Adani Wilmar, Bundi

Greater Kailash Hospital, Indore.  
Indian Soya Industries, Indore.  
Ipca Labs, Ratlam.  
IPF Vikram India, Pithampur  
Jaideep Glass and Industries, Pithampur.  
Katch Motors, Pithampur.  
Laxmi Solvex, Dewas.  
Mahakali Foods, Dewas.  
Nagarjuna Constructions, Indore  
National Hydro Project, Punasa.  
Gujarat Ambhuja Export, Mandsaur  
MP Warehousing Corporation  
L & T ECC, Pithampur

Pratibha Syntex, Indore.  
Radhakrishna Solvex, Mehsana, Ahmedabad.  
Raghuvanshi Packaging, Sanwer Road, Indore.  
Rainbow Paper, Ahmedabad.  
Ruchi Soya, Indore.  
Shankar Soya Industries, Indore  
Vardhman Yarns Ltd, Bhopal  
Venkateshwara Industries, Bhopal.  
Vinayak Fertilizers, Pithampur.  
Viscose Oil, Mangliya.  
SRF Ltd, Gwalior  
Adani Wilmar, Mandsour  
MES, Mhow





Color Coated Steel from Super  
Elements Pvt. Ltd

**Corporate Office:** 10,11 Jaora Compound Indore (M.P.) Tel.: +91-731-4002259, 4046444, Fax: +91-731- 4024602  
**Registered Office:** 42, South Hathipala, Indore(M.P.) Tel: +91-731-2474780, 2367057, 4046444  
**Bhopal Factory/Office :** Super Color Roofing Solutions, 129 Coal and Timber Market,  
Nishatpura, Bhopal (M.P) Mob.: 9826521354, 9893686906  
**URL:** [www.supercolor.co.in](http://www.supercolor.co.in)  
**Email:** [info@supercolor.co.in](mailto:info@supercolor.co.in), [sgspl42@yahoo.com](mailto:sgspl42@yahoo.com), [somilnarang@gmail.com](mailto:somilnarang@gmail.com)  
**Group Companies:** Super Elements Pvt.Ltd | Super Galvanized Sheets Pvt. Ltd.  
Super Color Roofing Solutions | Vishisht School of Management

