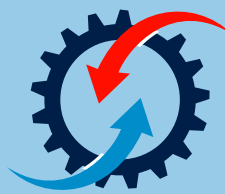


A Leading Company of Industrial Machinery
Since - 2013



OM SAI
MACHINE TOOLS
we makes machines.....

EXPERIENCE

PRECISION

EXCELLENCE



Product
Catalogue

DIGITAL READ OUT SYSTEM



DRO 3 AXIS EDM



DRO 2 AXIS LATHE/MILLING



DRO 3 AXIS LATHE/MILLING



DRO 3 AXIS LCD



LINEAR GLASS SCALE



LINEAR MAGNETIC SCALE

TAPPING MACHINE



Touch Screen Display



Internal Tapping



Outer Circular Die



Chamfer of Inner Hole



Self Tapping Brass

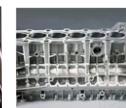


Magnetic Base
300 Kg / 600 Kg

Various Materials can be Tapping



Steel



Aluminum



Copper

Specification	Unit	M3-M12	M3-M16	M6-M24	M6-M30	M6-M36	M6-M48
Working Table	mm	900x600x700					
Tap Capacity	mm	3 to 12	3 to 16	6 to 24	6 to 30	6 to 36	6 to 48
Motor		Servo					
Motor Power	W	600	600	1200	1200	1200	1200
Motor Speed	rpm/m	1000	375	200	200	125	50-250
Input Power	V	220V Single Phase 50Hz					
Weight	Kg	32	32	49	49	67	125
Machine Dimension	mm	700x660x220	700x660x220	810x770x220	810x770x220	810x770x220	1200x1020x240

VERTICAL TURRET MILLING MACHINE



Specifications:			
MODEL	M3	M4	M5S
Table size(mm)	254x1270 (10x50)	254x1370 (10x54)	306x1370 (12x54)
Longitudinal Travel (mm)	830	930	930
Cross Travel (mm)	400	400	400
Vertical Travel(mm)	406 / 530	406 / 530	406 / 530
Table T-slots(mm)	16x3x63	16x3x80	16x3x80
Spindle Motor (H.P.)	3	3	3
Spindle Speed (RPM)	50-4260	50-4260	50-4260
Spindle Taper	ISO-30/40/R8	ISO-30/40/R8	ISO-30/40/R8
Spindle Nose to table Top (mm.)	40-510	40-510	40-446
Spindle Centre to Column Surface (mm.)	200-680	200-680	200-680
Quill Travel (mm)	127	127	127
Auto Quill Feeds (per revolution)(mm)	0.40/0.08/0.15	0.40/0.08/0.15	0.40/0.08/0.15
Head Swivel	RL90/FB45	RL90/FB45	RL90/FB45
Ram Travel (mm)	480	480	480
Y - Axis	Dovetail guide way	Dovetail guide way	Square guide way
Z - Axis	55dg. Swallow tail Guide way	55dg. Swallow tail Guide way	55dg. Swallow tail Guide way
Standard Accessories:			
SINO DRO 2 Axis, Collect set, Clamping kit, Machine Vice, Machine Lamp, Coolant system & tray, Chip cover, Drawbar, Lubrication, Tools Box,			

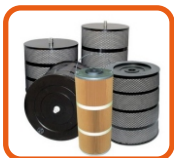
MILLING MACHINE ACCESSORIES





Parameter/Specification	Unit	OSMT-7720	OSMT-7725	OSMT-7735	OSMT-7745	OSMT-7750	OSMT-7763	OSMT-7780
Working table (X x Y)	mm	270 x 420	430 x 630	540 x 780	580 x 880	650 x 1000	750 x 1150	980 x 1350
Working travel (X x Y)	mm	200 x 250	250 x 320	350 x 450	450 x 550	500 x 630	630 x 800	800 x 1000
Max. thickness of work piece	mm	300	300	500	500	700	700	800
Max. taper	Deg./mm	±6 Deg /100						
Max. cutting speed	mm ² /min	Std. 100 / (250 High Speed Controller)						
Optimum roughness	um	1.50 (0.80 Multiple Cutting)						
Electrode wire diameter	mm	0.12 To 0.25 (0.18 Std)						
Power consumption	kVA	1.50						
Input power supply	V	3 Phase. 415VAC, 50Hz						
Max. work piece weight	kg.	200	200	400	400	600	800	1000
Working liquid		DM water						
Min. input command	mm	0.001						
Overall weight	kg.	800	1200	1700	1400	2400	3000	4500
Dimension of machine	mtr	1.5x1.0x1.4	1.5x1.0x1.4	1.6x1.3x1.7	1.7x1.5x1.7	2.0x1.7x1.7	2.2x1.9x1.9	2.5x2.1x2.0

Wire Cut EDM Spare Parts & Consumables



FILTERS



JR3JEL



WATER LIQUID



DIC-206



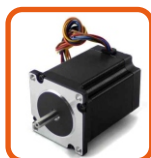
GUIDES/CARBIDES



ROLLER BALL BEARINGS



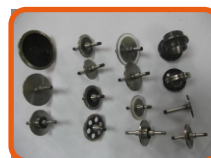
U&V MOTOR



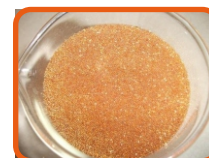
X&Y MOTOR



BRASS ASSEMBLY



ROLLERS



RESIN



MOLYBDENUM WIRE

MANUAL SURFACE GRINDER



MODEL	OSMT-914	OSMT-918	OSMT-1020	OSMT-1224
Working Surface of the Table	225X350mm	225X450mm	250X500mm	300X600
Max. Height From the Table to grinding wheel	225 mm	275 mm	275 mm	300 mm
Vertical Feed Graduation	0.01 mm	0.01 mm	0.01 mm	0.05 mm
Cross Feed Graduation	0.05 mm	0.05 mm	0.05 mm	0.05 mm
Spindle Speed	2800 RPM	2800 RPM	2800 RPM	2800 RPM
Grinding Wheel Size(Dia x width x Bore)	200x13x31.75mm	200x13x31.75mm	200x13x31.75mm	200x20x31.75mm
Magnetic Chuck Recommended	200 x 300 mm	200X450		
Electrical KW/HP	0.75 KW/1HP	0.75 KW/1HP	0.75 KW/1HP	0.75 KW/1HP
Diamond Dresser	0.5 CR	0.5 CR	0.5 CR	0.5 CR

HYDRAULIC SURFACE GRINDER



Model	OSMT-2550	OSMT-3060	OSMT-4080	OSMT-50100
Table size (mm)	500x250	600x300	800x400	1000x500
Max. table travel (mm) (L x W)	520x260	650x310	830x410	1030x510
Max. distance from table Surface to spindle center (mm)	360	435	460	360
Table slide-way	Double V-type Rail	Double V – type rail	Double V – type rail	Double V – type Rail
Cross feed on Hand wheel	per revolution (mm)	2.5	2.5	2.5
	per graduation (mm)	0.02	0.02	0.02
Vertical feed on hand wheel	per revolution (mm)	1.25	2.0	2.0
	per graduation (mm)	0.01	0.01	0.01
Wheel speed (50HZ)	2850 rpm	1450 rpm	1450 rpm	1450 rpm
Wheel size (WA46K5V) (Dia x Width x Bore)	200x31.75x20	300x30x127	300x30x127	350x30x127
Power of Spindle motor (Watt)	1500	2200	4000	5000
Hydraulic station motor (Watt)	1500	2200	2200	3000
Working Pressure (Mpa)	3	4	4	6.3
Max. runoff (L/min)	18	20	20	22
Fuel tank capacity (Liter)	60	80	100	120
Coolant pump (Watt)	40	40	40	60



Model	OSMT-3032X9	OSMT-3040X13	OSMT-3050X16
Max. Drilling Capacity	32 mm	40 mm	50 mm
Diameter of Column	180 mm	230 mm	280 mm
Spindle to work table	260 mm – 740 mm	260 mm – 1150 mm	650 mm – 1330 mm
Spindle to column distance	250 – 700 mm	360 – 1200 mm	350 – 1450 mm
Travel of spindle	160 mm	180 mm	310 mm
Type of spindle bore	Morse 4#	Morse 4#	Morse 5#
Speed range of spindle	108 – 1000 rpm	34 - 1220 rpm	78 - 1100 rpm
Speed classes of spindle	6	12	6
Feed range of spindle	NO	0.06 - 0.25 mm per rpm	0.10 - 0.56 mm per Rpm
Feed classes of spindle	NO	6	6
Hydraulic Clamping of Spindle & Column	NO	NO	YES
Arm rotation angle	360°	360°	360°
Power of main motor	2.2 kw	2.2 kw	4 kw
Arm lifting motor power	1.1 kw	1.1 kw	1.5 kw
Cooling motor power	40 w	40 w	40 w

MODLE	OSMT-3050X16/1	OSMT-3063X20/1	OSMT-3080X25
CAPABILITY			
Max. drilling diameter	50mm	63mm	80mm
HEADSTOCK			
Number of spindle speed	16	16	16
range of spindle speed	25 — 2000rpm	20 — 1600rpm	16 — 1250rpm
Number of spindle feed	16	16	16
Range of spindle feed	0.04 — 3.2mm/r	0.04 — 3.2mm/r	0.04 — 3.2mm/r
Spindle taper	MT5	MT5	MT6
Travel of spindle quill	315mm	400mm	450mm
Angle of arm rotation	360°	360°	360°
WORKING AREA			
Column diameter	350mm	450mm	550mm
Distance between spindle axis and column	350 — 1600mm	450 — 2000mm	500 — 2500mm
Distance between spindle end and working surface of basic plate	320 — 1220mm	400 — 1600mm	550 — 2000mm
BOX-TYPE WORKTABLE			
Radial drill Box table size	630 x 500 x 500mm	800 x 630 x 500mm	1000 x 800 x 560mm
T-slots	5pcs/22mm/150mm	5pcs/22mm/150mm	7pcs/22mm/150mm
BASE			
Base size	2400 x 1000 x 200mm	2400 x 1000 x 200mm	3530 x 1400 x 300mm
T-slots	4pcs / 28mm / 180mm	4pcs / 28mm / 180mm	4pcs / 28mm / 276mm
ENGINES AND POWER SUPPLY			
Spindle motor power	4kW	5.5kW	7.5kW
Arm elevation motor power	1.1kW	1.5kW	3kW
Clamping motor power	0.75kW	0.75kW	1.1kW
Cooling pump motor power	0.120kW	0.120kW	0.120kW

ALL GEARED LATHE MACHINE



Model	OSMT-6241X1000	OSMT-6241X1500
Electrical Connection		
Total connected value	2.2/3.3Kw	2.2/3.3Kw
Coolant equipment	100 W	100 W
Working Areas		
Center height	210 mm	
Admit between Center	1000 mm	1500 mm
Swing over bed	420 mm	
Swing over cross slide	250 mm	
Turning in the bed gap	590 mm	
Length of bed gap	260 mm	
Bed width	250 mm	
Speeds		
Spindle speed	45-1800 rpm	
Number of steps	16 stages	
Headstock		
Spindle taper	MT6	
Spindle seat	Camlock ASA D1-6"	
Spindle drilling, rod passage	52 mm	
Slide		
Travel top slide	140 mm	
Travel cross slide	230 mm	
Pitch – Metric in the range of	02. – 14mm/rev; 39 thread pitches	
Pitch – Inch in the range of	72-2 threads/1"; 45 thread pitches	
Max. section of tool	20 x 20 mm	



UNIVERSAL MILLING MACHINE



MODEL	UNIT	OSMT-ZX-6250C	OSMT-ZX-6350ZA
Spindle taper		MT-4/ISO-40	ISO-40/ISO-40
Distance vertical spindle to table	Mm	100-460	90-390
Distance horizontal spindle to table	Mm	0-360	0-360
Distance spindle to column	Mm	200-500	200-500
Distance horizontal spindle to arm	Mm	175	175
Spindle speed range (Vertical)	r/min	36-1526 (16 steps)	72-1800 (8 steps)
Spindle speed range (Horizontal)	r/min	40-1300 (12 steps)	40-1300 (12 steps)
Spindle travel	Mm	120	120
Max. drilling dia	Mm	50	50
Vertical milling dia	Mm	25	25
Table size	Mm	1200x280	1500x320
Table travel (X/Y/Z)	Mm	600/250/360	900/280/360
Table auto feed speed	mm/min	X : 16-480 (8 steps)	X/Y : 22-555, Z : 300
Motorized lifting table on Z axis		No	Yes
Motor power (Vertical)	Kw	1.5	1.5
Motor power (Horizontal)	Kw	2.2	2.2
Motor power auto feed	Kw	0.75	0.75
Motor power coolant	W	40	40



CNC ENGRAVING MACHINES



Salient Features

- High precision ball screw/L.M. guide ways (Hiwin)
- Lead shine stepper motors & drives
- Advance PC based controller
- Automatic lubrication system
- Works with G code like .tap, .nc, .opt, .plt
- Suitable for engraving on Steel, Brass, Copper & Aluminum
- Double fixed column, Table movement for stable working
- Cast iron robust structure

Standard Accessories

- Tool length calibrator
- Automatic lubrication system
- Machine lamp
- Coolant system
- Clamping kit
- Levelling pad
- Spanners

Optional Accessories

- 4th Axis Rotary Attachment
- Auto Tool Changer
- Water Chiller
- Vacuum Table
- MPG hand remote



NK105 CONTROLLER



SYNTEC CONTROLLER



NK280 CONTROLLER



NC STUDIO



DSP CONTROLLER



NC STUDIO



WATER CHILLER



ROTARY ATTACHMENT

Parameter / Specification	Unit	OSMT-404	OSMT-606	OSMT-609
Working Table (X x Y)	mm	440 x 440	620 x 620	620 x 920
Working Travel (X x Y)	mm	400 x 400	600 x 600	600 x 900
Travel (Z axis)	mm	200	200	200
Feeding Height (Z axis)	mm	200	200	300
Position accuracy	mm	0.01 / 300		
Repeatability	mm	0.008		
Spindle speed	rpm	6000 - 24000		
Spindle power	kw	2.2 kw (Water cooling) 3.2 kw, 4.5 kw & 5 kw (Optional)		
Control system		NC Studio / DSP / NK105 / NK280 / SYNTEC 6MA		
Drive system		Steeper / Servo		
Max. rapid travel speed	m/min	6		
Max. working speed	m/min	3		
Input power supply	V	Single phase, 220VAC (3Phase 415VAC , 50Hz Optional)		
Gross weight	kg	500	800	1000
Over all dimension	mm	850 x 800 x 800	950 x 850 x 850	1000 x 1300 x 1000

END MILL GRINDER

Specification	Unit	OSMT-03-13	OSMT-04-20
Range	mm	03-13	04-20
Motor	W	180	
Motor Speed	RPM	4800	
Diamond Wheel		CBN1203/300 (SSDC1203/3003)	
Collet		2 Flute, 3 Flute, 4 Flute - 1 Set each	
Power	V	AC220V/50Hz	
Weight	Kg	25	
Dimension	mm	350 x 230 x 240	



DRILL BIT GRINDER

Specification	Unit	OSMT-03-13
Range	mm	03-13
Motor	W	180
Motor Speed	RPM	4800
Diamond Wheel		CBN1203/300 (SSDC1203/3003)
Point Angle	Degree	95 - 135
Power	V	AC220V/50Hz
Weight	Kg	10
Dimension	mm	320 x 180 x 190



SINGLE LIP CUTTER GRINDER

Specification	Unit	OSMT-3-16
Collet Diameter	mm	3-16
Grinding Diameter	mm	3-16
Taper Angle	Degree	0-180
Relief Angle	Degree	0-45
Motor Speed	RPM	2800
Motor		220V/50Hz 1/3 HP
Weight	Kg	45
Dimension	mm	450 x 400 x 350



Salient Features

- Seven Segment Display
- Programmable Z axis
- 10 Step, 10 Programs storage
- Built in 3 axis DRO
- Integral design and compact footprint
- Precision co-ordinate table on flat & V type turcide coated guide ways driven by ball screw
- Double door large work tank for ease of loading & unloading of work piece
- Oil level alarm, Oil temperature alarm
- Highly accurate work head with the quill running on pre-loaded cross roller bearing
- High speed quill movement with DC servo motor
- Motorized back slide travel (ZNC-35 onwards)
- Hand held full function remote control (80A,100A & 40AL)
- X,Y,Z lock function
- Mm & inch function
- Reverse servo machining
- Safe & stable no arc machining
- Like to like material machining
- Calibrated EDM technology
- Fire extinguisher, Smoke detector alarm
- Sleep mode, Auto mode
- Power efficient high pressure dielectric pump
- Oil filtration with 20 micron paper filter

Standard Accessories

- Axis corrector with fine adjustment
- Flat electrode holder
- Round electrode holding chuck
- Machine lamp
- Flushing aids
- Clamping kit
- Leveling pad
- Tool kit



Job Sample



Optional Accessories

- Servo stabilizer
- Edm oil
- Orbital attachment
- Translatory head
- Magnetic chuck
- LCD color display

Technical Specification	Unit	ZNC-30	ZNC-35	ZNC-45	ZNC-50	ZNC-70
Working tank (W x D x H)	mm	850x550x320	980x560x380	1250x730x450	1460x880x530	2000x1100x600
Working table	mm	300x500	350x630	450x700	500x800	700x1200
Longitudinal travel (X)	mm	300	350	450	500	700
Transverse travel (Y)	mm	200	250	350	400	600
Quill travel (Z)	mm	200	200	250	250	300
Back slide travel	mm	---	200	250	250	300
Quill to working table	mm	580	700	730	800	1000
Max. electrode weight	kg	50	50	75	100	150
Max. workpiece weight	kg	300	500	700	1000	2000
Oil tank capacity	Ltr.	300	350	400	500	600
Servo system for Z axis				DC Servo		
Machine weight	kg	1200	1300	1600	1900	3500
Machine dimension (LxWxH)	mm	1320x1150x2060	1350x1210x2100	1485x1420x2150	1600x1600x2200	2100x2000x2600
Pulse Generator						
		40A / 40AL		80A / 80AL		100A / 100AL
Max. working current	amp	40		80		100
Max. MRR	mm ³ /min	200		500		600
Min. electrode wear	%	<0.2		<0.2		
Best surface finish	Ra	0.5		0.5		
Input power supply	V	3 Phase, AC 415V, 50 Hz			3 Phase, AC 415V, 50 Hz	
Connected load	kVA	4		8		10
Controller weight	kg	110		200		250
Controller dimension (LxWxH)	mm	Fitted with machine		800x540x1700		800x540x2000

40A/80A/100A - 7 Segment Display | 40AL/80AL/100AL - LCD Display (Optional)



Salient Features

- 15" LCD color display
- Programmable Z axis
- 50 step, 100 program storage
- Built in 3 axis DRO resolution 1 micron
- Precision co-ordinate table on flat & V type turcide coated guide ways driven by ball screw
- Double door large work tank for ease of loading & unloading of workpiece
- Oil level alarm, Oil temprature alarm
- Highly accurate work head with the quill running on preloaded cross roller bearing and ball screw
- High speed quill moment with **Panasonic AC servo motor**
- Attractive compact looks
- Hand held multi function remote control
- Z axis lock function
- Mm and Inch display
- Reverse servo machining
- Safe & stable, No arc machining
- Like to like material machining
- Calibrated EDM technology
- Automatic lubrication system
- Fire extinguisher, Smoke detector alarm
- Self diagnostic trouble shooting with alarm
- Sleep mode, Auto mode
- Efficient dielectric system with double filtration

Standard Accessories

- Axis Corrector
- Flat Electrode Holder
- Round Electrode Chuck
- Flushing Aids
- Clamping Kit
- Mounting/Leveling Pads
- Tool Kit

Optional Accessories

- Servo stabilizer
- Edm oil
- Orbital attachment
- Translatory head
- Magnetic chuck
- Mirror finishing special circuit

Specification	Unit	ZNC-30S	ZNC-35S	ZNC-45S	ZNC-50S	ZNC-70S
Work Tank (WxDxH)	mm	785 x 540 x 320	875 x 540 x 380	1205 x 600 x 450	1255 x 685 x 480	1940 x 1050 x 600
Working Table	mm	500 x 300	630 x 350	700 x 450	800 x 500	1200 x 700
Longitudinal Travel (X axis)	mm	300	350	450	500	700
Transverse Travel (Y axis)	mm	200	250	350	400	600
Quill Travel (Z axis)	mm	200	200 + 200	250 + 250	250 + 250	300 + 300
Quill to Working Table	mm	560	650	700	760	1000
Max. Electrode Weight	kg	50	75	75	100	150
Max. Workpiece Weight	kg	450	500	700	1000	2000
Oil Tank Capacity	Ltr	300	350	500	500	800
Drive System for Z Axis		AC Servo	AC Servo	AC Servo	AC Servo	AC Servo
Machine Weight	kg	1200	1300	1600	1900	3500
Machine Dimension	mtr	1.50 x 1.20 x 2.32	1.60 x 1.25 x 2.50	1.90 x 1.60 x 2.40	2.00 x 1.60 x 2.50	2.10 x 2.00 x 2.80
Pulse Generator						
Max. Working Current	amp	30 (60AMP & 90 AMP OPTIONAL)				
Max. MRR	mm ³ / min	300				
Min. Electrode Wear	%	≤0.1				
Best Surface Finish (Ra)	μ	0.15 with mirror function / 0.40 without mirror function				
Power Supply	volt	3 Phase, AC415V/50Hz				
Connected Load	kVA	8				



Salient Features

- Ball screw for X and Y axis
- L. M. guide for Z axis
- Parameter changing is allowable during operation
- Job material steel/copper/brass/aluminium/carbide
- Adjustable high pressure compact water pump with filtration
- 3 axis DRO with depth control
- Motorized work head movement
- Electrode dressing facility
- Job holding fixture & clamp
- Tap water is used as dielectric fluid
- Precise granite table
- Compact footprint
- Brass & copper electrodes can be used
- Machine lamp
- Automatic lubrication pump

Standard Accessories

- Leveling Pads : 4 Nos.
- Clamping Kit : 1 Set
- Tool Kit : 1 Set
- Water Can : 2 Nos.
- Guides : 3 Nos.
- Electrodes : 30 Nos.
- Rubber Seal : 5 Nos

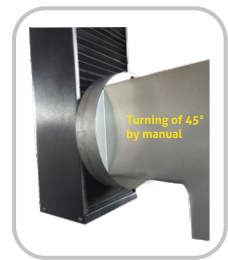
Application

- Start hole for wire cut edm
- Gas discharge
- Ejector pins
- Cooling pins
- Air vent for forging die
- Jet hole
- Filter hole
- Remove broken tap

Water Pump



Swivel Head



Drill Head



Technical Specification	Unit	OSMT-DZ-703	BH-5040
Dimension of working table (X x Y)	mm	360 x 430	440 x 630
Travel of working table (X x Y)	mm	300 x 400	400 x 500
Z axis travel (Z + W)	mm	370 + 300	400 + 350
Distance from quill to table	mm	85 - 435	85 - 485
Max. machining current	amp	30	30
Drilling range	mm	0.30 - 3.00	
Max. electrode length	mm	500	500
Max. workpiece weight	kg	200	300
Max. machining speed	mm/min	30 - 60	30 - 60
Max. power consumption	kVA	3.5	4
Drive system for Z axis		Servo Motor	
Input power supply	V	3 Phase, 415V , 50Hz	
Machine dimension	mm	1200 x 1500 x 2000	1250 x 1150 x 2100
Machine weight	kg	500	600

Salient Features

- “C” structure, “I” shape machine bed same as brass WEDM structure
- Reusable reciprocating technology
- Linear Guide & Ball Screw for X, Y, U, V, Z Axis & Wire Drum
- Special industrial computer with LCD color display
- **Panasonic/Mitsubishi AC servo motors** with close loop feedback on X,Y Axis
- Die electric tank with paper filter
- Multi cut, Multi cavity
- AutoCut controller system based on Window XP
- Automatic centerlised lubrication system
- Automatic wire tension system
- Motorized Z axis on L. M. guide
- LED working lamp
- Program input from USB, LAN online Incremental, Absolute command
- Linear & Circular interpolation
- Steps error, backlash error compensation
- Display of machining time & cutting rate
- 2D/3D graphic simulation of wire path
- Display of operator help & error massage
- Simultaneous control of X,Y,U,V axis
- Single block execution
- Rotation/mirror of program
- Automatic center find, Edge find
- Wire brake protection mode
- Auto gap short recovery
- Alarm light
- Resumption of cutting from power fail position



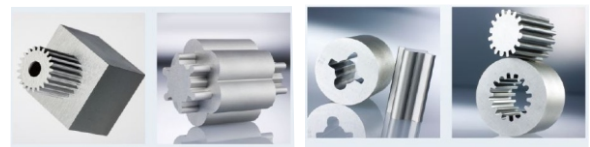
Optional Accessories

- Bigger Taper
- Higher Z Height
- Magnetic Filter
- U & V Servo

Standard Accessories

- Wire Right Angle Block
- Drum Handle
- Molybdenum Wire
- DIC 206 Fluid
- Tool Kit
- Allen Keys
- Leveling Pads
- Spanner
- Scissor

Job Sample



Specification	Unit	OSMT-7735S	OSMT-7745S	OSMT-7750S	OSMT-7763S	OSMT-7780S
Work Table Travel	mm	350 x 450	450 x 550	500 x 630	630 x 800	800 x 1000
Work Table Size	mm	550 x 800	570 x 880	650 x 1000	850 x 1350	980 x 1580
Max. Workpiece Thickness	mm	300	300	300	400	400
Max. Taper Angle	°/mm	±6°/100 (±10°/120 Optional)				
Max. Cutting Speed	mm ² /mm	200				
Positional Accuracy	mm	±0.005				
Max. Working Current	amp	10				
Optimum Roughness	μ Ra	1.50 Single Cut & 0.60 Multiple cutting				
Range of Wire Diameter	mm	0.12 - 0.25 (0.18 Std)				
Wire Traveling Speed	m/mm	5 - 11				
Max. Workpiece Weight	kg	300	400	600	800	1500
Working Liquid		DM Water				
Input Power Supply	volt	3 Phase, AC415V/50Hz				
Power Consumption	kVA	2.5				
Machine Dimension	mtr	1.8x1.7x1.9	1.9x1.8x1.9	2.0x2.0x2.0	2.4x2.6x2.5	2.5x2.1x2.0
Machine Weight	kg	1800	2100	2700	4500	6500

Drill EDM Spares Parts & Consumables



WATER AIR PUMP



WATER PUMP



BRASS/COPPER ELECTRODE



MULTI HOLE ELECTRODE



RUBBER SEAL



KEYLESS DRILL CHUCK



TAIWAN DRILL HEAD



CHINA DRILL HEAD



ROUND DRILL HEAD



DRILL CHUCK



DRILL GUIDES

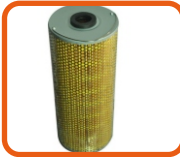
DM Accessories & Consumables



SERVO STABILIZER



EDM OIL



PAPER FILTER



ORBITAL ATTACHMENT



TRANSLATORY HEAD



AXIS CORRECTOR



X,Y,Z BALL SCREW



ELECTRODE HOLDER
STAINLESS



ELECTRODE HOLDER
BRASS



ELECTRODE HOLDER
BRASS



VMC CHUCK



EDM CHUCK



CENTRING PROB



COLLET HOLDER



SPIGOT

Laser Welding Spare Parts & Consumables



XENON LAMP



LASER WIRES



PROTECTION GLASS



JOY STICK



YAG LASER



OTHER SPARES

Radial Drill Machine Spare Parts



SHAFT



WHEEL



CASTING



PLC



CLUTCH PLATE &
LOCK ASSEMBLE



LOCK UNLOCK PUMP

Milling Machine Spare Parts



WELLO COVER



ROTARY SWITCH &
MICRO METER ASSEMBLY



CLOCK SPRING &
BREAK SHOOE



MILLING HEAD



CEAM RING &
BAIRING SLEEVE



PULLY HUB GEAR HUB



Imported & Marketing by :

OM SAI MACHINE TOOLS

SALES | SERVICE | SPARE

Office : C-147, Sector-10, Noida (U.P.) 201301

Mobile : 9717539954, 9315573270

E-mail : omsaimachinetools@gmail.com

Website : www.omsaimachinetools.in

Godown : E-1, Dairy Form Gazipur, Near Shamshan Ghat Gazipur, Delhi-110096