

K-36, UPSIDC Site V, Kasna Greater Noida  
Uttar Pradesh - 201308  
Phone:0120-2341106 Mo. : +91-9899329140  
Email: sarkarenterprises36@gmail.com  
Website: www.sarkarenterprises.com

# Ballasted Rooftop Structure (Model: STR-AL-1000)



Non penetrating rooftop solution suitable for small kW systems (250W-2KW) on flat rooftops with plenty of roofspace and parapet walls



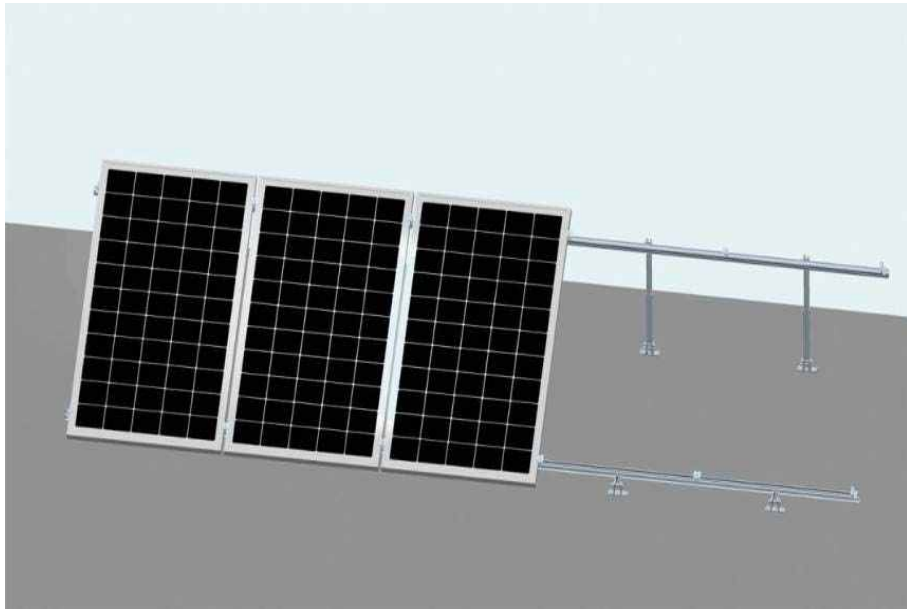
- Scale from as small as one PV module to multiple PV modules
- Easy to assemble, disassemble, and transport
- No power tools required for assembly
- Lightweight, all rails made out of aluminium
- Wind protection provided
- Area required per kW: 10.5 sq.m
- Tilt angle: Upto 13 degrees

# Penetrating Rooftop Structure

(Model: STR-AL-1500)



Penetrating lightweight solution suitable for small kW solar PV systems (250W – 2KW) on flat rooftops with plenty of roof space



Area required: 10.5 sqm per kW

Components include:

- Anodized Al rails

- Adjustable Front & Back Leg

- Al End and Mid clamps

- SS Anchor fasteners

Weight: Approx. 18 kg per kW

# Penetrating Rooftop Structure –GI

(Model: STR-GI-2000)

Low cost compact structure suitable for flat roofs and small to mid sized installations (1KW-100KW)



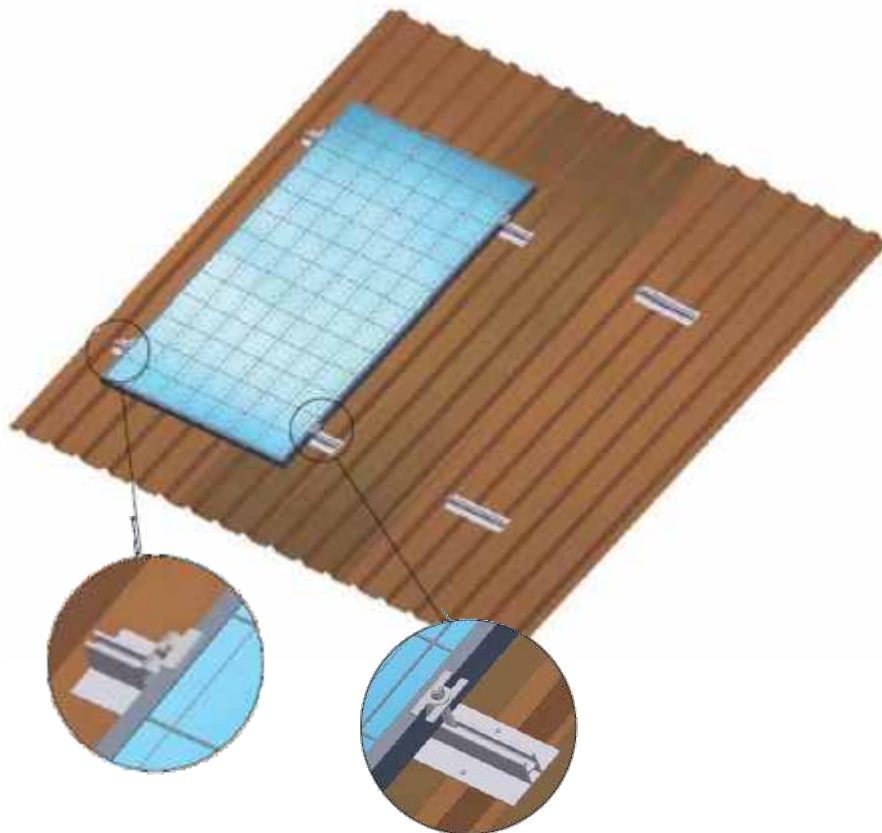
- Compact structure for flat roofs
- Structure is made of roll formed GI profiles (C channels and angles), 120GSM standard, 550GSM on request
- Between 50-70kg per KW, based on latitude
- Stainless steel fasteners, SS stud bolts for foundations
- No welding required
- Tailored to meet roof area and system size
- Designed to withstand wind gusts of 150kph
- Tilt adjustable to latitude

# Metal Roofs – Trapezoidal Profile

(Model: STR-AL-3000)



Suitable for corrugated metal roofs with trapezoidal roof profile  
solar panels arranged in portraitmode



Mounting structure components include:

- T slotted rails
- End and mid clamps
- Angle brackets
- T Nuts and bolts

Above components are made out of anodized Al

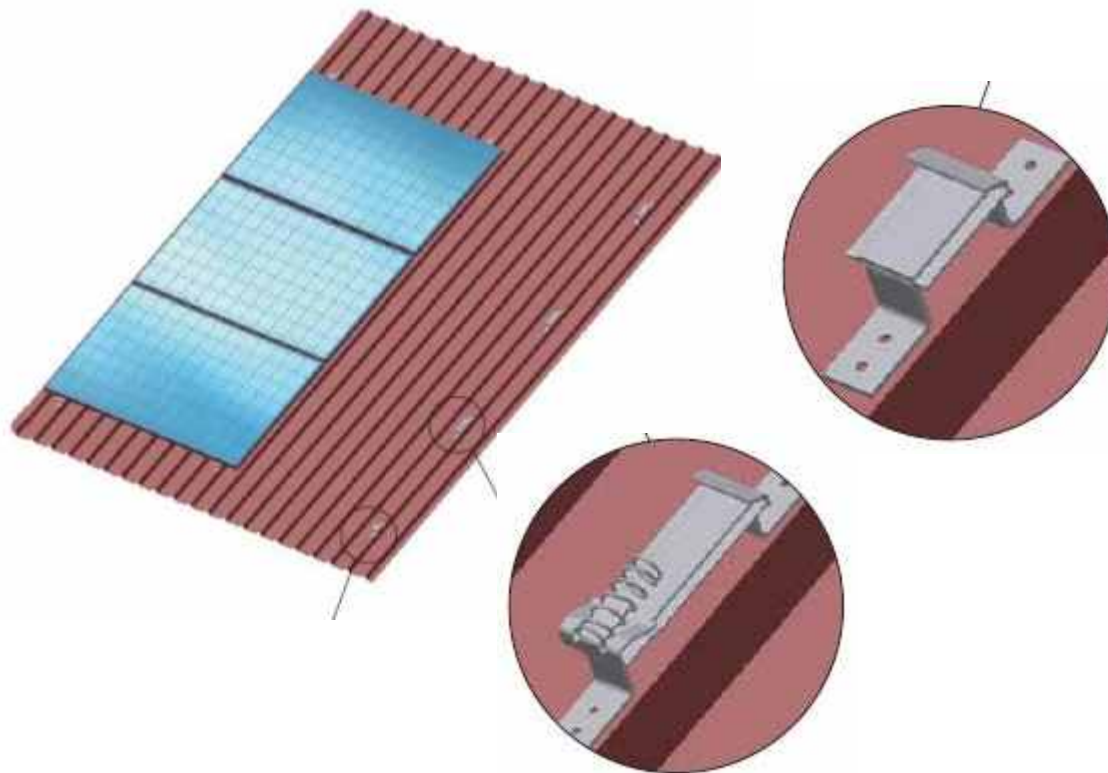
Rails riveted to metal roof with pop rivets

# Metal Roofs – Trapezoidal Profile

(Model: STR-AL-3500)



Suitable for corrugated metal roofs with trapezoidal roof profile  
solar panels arranged in **landscape** mode



Mounting structure components include:

- SS Brackets
- Al mid and end clamps

Brackets are riveted to metal sheet using pop rivets

# Metal Roofs - Standing Seam

(Model: STR-AL-3600)



Suitable metal roofs with standing seam panels mount directly to clamps, roof is not penetrated



# Mounting Structure for Tiled Roofs

(Model: STR-AL-4000)



Suitable for tiled roofs—  
panels mount directly to rails that are  
fastened to hooks fixed to underlying rafters



Mounting structure  
components include:

- Solar hooks,
- Al mounting rails,
- Al end and mid clamps

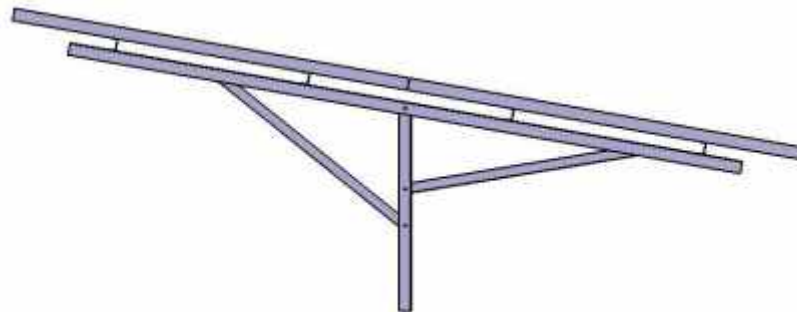


# Ground Mounted Structure – Fixed

(Model: STR-HDG-5000)



Suitable for large MW solar installations –  
crystalline panels



Structures made from roll formed steel profiles, that are hot dipped galvanized to 80 microns thickness  
25 years warranty on structures  
Able to sustain wind loads of 150kmph  
Foundations can be reinforced concrete, ground screws, or rammed posts

# Ground Mounted Structure – Fixed

(Model: STR-HDG-5500)



Suitable for large MW solar installations – thin film panels



# Pole Mounted Structure



Simple structure designed to hold 1-2 solar panels above ground or roof



# Other Mounting Structures



Sunshed



Solar Carport

# Moving Structures -Single Axis Tracker



- Material : Hot dipped galvanized
- Area per KW: 40 sq m
- - E W tracking : +/-45 degrees
- Tracking Mechanism : Linear Actuator
- Seasonal tilt : Manual