

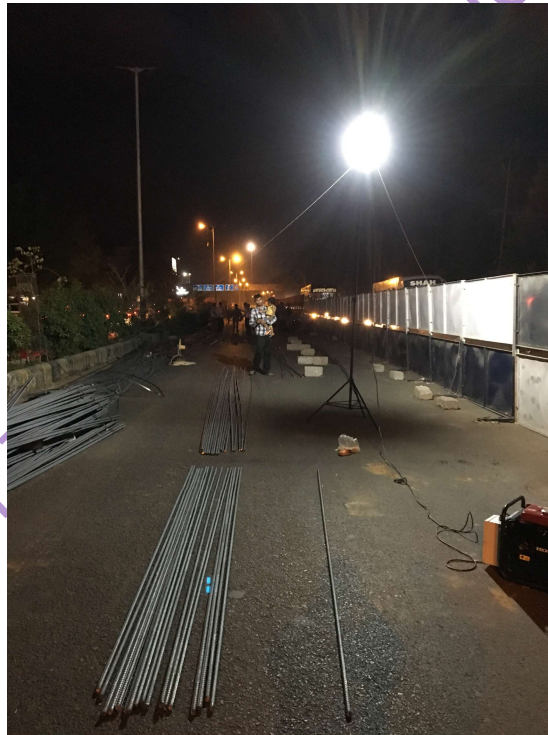


**HESHAM INDUSTRIAL SOLUTIONS**



# TELELIGHT 800W

## TECHNICAL SPECIFICATION



**HESHAM INDUSTRIAL SOLUTIONS**, B61 LAVKUSH NAGARI, VADSAR ROAD,  
VADODARA, GUJARAT-390010, INDIA, GST: 24AZCPM3892K1Z1  
Our Website: [www.heshamsolutions.com](http://www.heshamsolutions.com) , [www.heshamsolutions.in](http://www.heshamsolutions.in)  
Mob: 7228866734, [contact@heshamsolutions.com](mailto:contact@heshamsolutions.com), [heshamsolutions@gmail.com](mailto:heshamsolutions@gmail.com)



## HESHAM INDUSTRIAL SOLUTIONS



### Technical specification Teleslight 800W

Hesham Industrial Solutions, Vadodara

HESHAM INDUSTRIAL SOLUTIONS, B61 LAVKUSH NAGARI, VADSAR ROAD,  
VADODARA, GUJARAT-390010, INDIA, GST: 24AZCPM3892K1Z1  
Our Website: [www.heshamsolutions.com](http://www.heshamsolutions.com) , [www.heshamsolutions.in](http://www.heshamsolutions.in)  
Mob: 7228866734, [contact@heshamsolutions.com](mailto:contact@heshamsolutions.com), [heshamsolutions@gmail.com](mailto:heshamsolutions@gmail.com)



## HESHAM INDUSTRIAL SOLUTIONS



### Product description



### APPLICATIONS

The Hesham **Telelight** range comprises Portable Telescopic lighting tower models that are either mains-powered or have a built-in generator, either petrol or diesel powered. **Telelight** is a high performance portable lighting system optimized for easy mobility and low power consumption especially developed for the Fire, Airport, railway Maintenance and rescue industry.

**HESHAM INDUSTRIAL SOLUTIONS, B61 LAVKUSH NAGARI, VADSAR ROAD,  
VADODARA, GUJARAT-390010, INDIA, GST: 24AZCPM3892K1Z1**  
Our Website: [www.heshamsolutions.com](http://www.heshamsolutions.com) , [www.heshamsolutions.in](http://www.heshamsolutions.in)  
Mob: 7228866734, [contact@heshamsolutions.com](mailto:contact@heshamsolutions.com), [heshamsolutions@gmail.com](mailto:heshamsolutions@gmail.com)

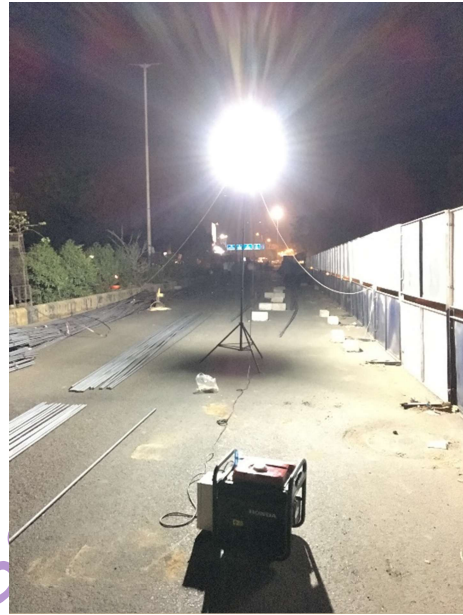
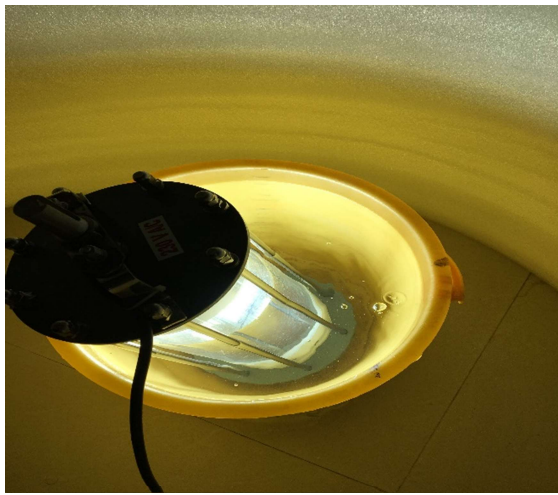


## HESHAM INDUSTRIAL SOLUTIONS



### Key Feature:

It adopts the world's most advanced high brightness and LED light source. The luminous efficacy of LED lamp light is 100-120 lumens per watt. Its lifespan is 50000 hours. High brightness LED light accords with the lighting concept of environmental, green, long-term and high brightness. LED Head is fully water proof IP68.



**Telelight 800W** has electric leakage protection function.

**Telelight 800W** has security overvoltage protection, under-voltage protection and over current protection function.

**Telelight 800W** is fully waterproof design consist with expandable waterproof structure with Anodised aluminium structure can with stand upto 20kg.

**Telelight 800W** can be split into two parts one is Portable generator with Canopy and Telescopic Tower.

**Telelight 800W** is ISO 9001: 2015, CE, RoHS certified Product.

**HESHAM INDUSTRIAL SOLUTIONS, B61 LAVKUSH NAGARI, VADSAR ROAD,  
VADODARA, GUJARAT-390010, INDIA, GST: 24AZCPM3892K1Z1**  
Our Website: [www.heshamsolutions.com](http://www.heshamsolutions.com) , [www.heshamsolutions.in](http://www.heshamsolutions.in)  
Mob: 7228866734, [contact@heshamsolutions.com](mailto:contact@heshamsolutions.com), [heshamsolutions@gmail.com](mailto:heshamsolutions@gmail.com)



## HESHAM INDUSTRIAL SOLUTIONS



### System constitution:

Control host: including the body, control box, The body front panel is the control panel for the operation of the whole system including self-locking lighting button.

Inflatable lamp: including LED lamps, Telescopic tower. The LED lamp is fixed on the top of the Telescopic Tower has the Max expandable height of 4M from the ground.

3. Portable petrol generator: adopt rated power of digital 850VA generator, with overload protection, pull start system, AC 220V power output.

4. Water protection Canopy: in order to protect genset from rain and dust water protection canopy will be provided on request.

### **Technical Specification:**

Working power supply	
<b>A. Petrol generator power supply</b>	50Hz / >850VA rated output power 220VAC, fuel tank capacity 3.5L for 7Hrs operation
<b>B. National grid</b>	power supply: 50Hz / 10A, 220VAC Working voltage range: 220VAC±5%
Light Source	
<b>Lamp Type</b>	Waterproof 360° LED
<b>Power</b>	800W equal to 1600W metal halide
<b>Lux</b>	20 Lux @ 10 M, 10 Lux @ 30M, 2 Lux @ 50M
<b>Color temperature</b>	6000K
<b>LED</b>	High Efficiency SMD
<b>Life</b>	50000h
<b>Light stare time</b>	Nil
<b>Lighting Re start time</b>	Nil

HESHAM INDUSTRIAL SOLUTIONS, B61 LAVKUSH NAGARI, VADSAR ROAD,  
VADODARA, GUJARAT-390010, INDIA, GST: 24AZCPM3892K1Z1  
Our Website: [www.heshamsolutions.com](http://www.heshamsolutions.com) , [www.heshamsolutions.in](http://www.heshamsolutions.in)  
Mob: 7228866734, [contact@heshamsolutions.com](mailto:contact@heshamsolutions.com), [heshamsolutions@gmail.com](mailto:heshamsolutions@gmail.com)





## HESHAM INDUSTRIAL SOLUTIONS



<b>Inflatable Telescopic Lamp post</b>	
<b>Material</b>	Aluminium tube Black Anodised to prevent Rust and weather
<b>Height &amp; Diameter</b>	4.0m, diameter 0.4 m
<b>Retractable height</b>	960mm, Tripod Expansion Height 1100mm, Max Expansion Height 3600 mm
<b>Tripod dimensions</b>	1200 mm Dia
<b>Portable noiseless petrol generator</b>	
<b>Petrol generator</b>	850VA(850W) semi opened
<b>Tank capacity</b>	3.5L for 7 hrs operation
<b>Power supply</b>	220VAC / 50Hz
<b>Fuel</b>	Petrol, 4 Stroke
<b>Approval</b>	Central Pollution Control Board (Govt. of India).
<b>Noise</b>	Noise Regulation (Phase-II) of CPCB
<b>Continuous working time</b>	7h (standard configuration model filled with petrol 3.6L)
<b>Size</b>	
<b>Lighting System</b>	200 mm OD x 400 mm Ht
<b>Light Weight</b>	4kg
<b>Telescopic System</b>	90 mm OD x 960 mm Ht
<b>Gasoline engine Weight</b>	26kg(not include petrol)
<b>Total System Weight</b>	30 kg
<b>Working Condition</b>	
<b>Working Temperature</b>	-40 °C ~ +50°C
<b>Relative Humidity</b>	10% ~ 90%
<b>Wind Speed</b>	40 kmph

HESHAM INDUSTRIAL SOLUTIONS, B61 LAVKUSH NAGARI, VADSAR ROAD, VADODARA, GUJARAT-390010, INDIA, GST: 24AZCPM3892K1Z1  
 Our Website: [www.heshamsolutions.com](http://www.heshamsolutions.com) , [www.heshamsolutions.in](http://www.heshamsolutions.in)  
 Mob: 7228866734, [contact@heshamsolutions.com](mailto:contact@heshamsolutions.com), [heshamsolutions@gmail.com](mailto:heshamsolutions@gmail.com)



## HESHAM INDUSTRIAL SOLUTIONS



### Benefits over Inflatable Tower Light:

- No Maintenance or unexpected break down expected
- Inflatable light tower consist of Halide light and consumes more fuel
- No puncture
- NPCB approved generator
- 4X power light than 400W Halide
- Less storage space occupied
- No need to keep tower on spare and generator spares easily available
- 5 years spares support
- 2 years offsite warranty on LED light, 1 year on Generator and Telescopic tower

### Product packing list

**1. Telelight 800W LED Light**

**2. Semi opened generator with rain protection Canopy**

**3. Certificate of conformity**

**4. 4 pcs Nylon 6mm ropes**

**5. Carry Bag for Telescopic Stand**

**Note: Design and Dimension may change without any notification.**

**HESHAM INDUSTRIAL SOLUTIONS, B61 LAVKUSH NAGARI, VADSAR ROAD,  
VADODARA, GUJARAT-390010, INDIA, GST: 24AZCPM3892K1Z1**  
Our Website: [www.heshamsolutions.com](http://www.heshamsolutions.com) , [www.heshamsolutions.in](http://www.heshamsolutions.in)  
Mob: 7228866734, [contact@heshamsolutions.com](mailto:contact@heshamsolutions.com), [heshamsolutions@gmail.com](mailto:heshamsolutions@gmail.com)