



**APEX PRECISION  
MECHATRONIX PVT.LTD.**

303-308, Krishna Bhuvan Annex, 22-B, Govandi  
Station Road, Deonar, Mumbai - 400088,  
Maharashtra,  
INDIA.

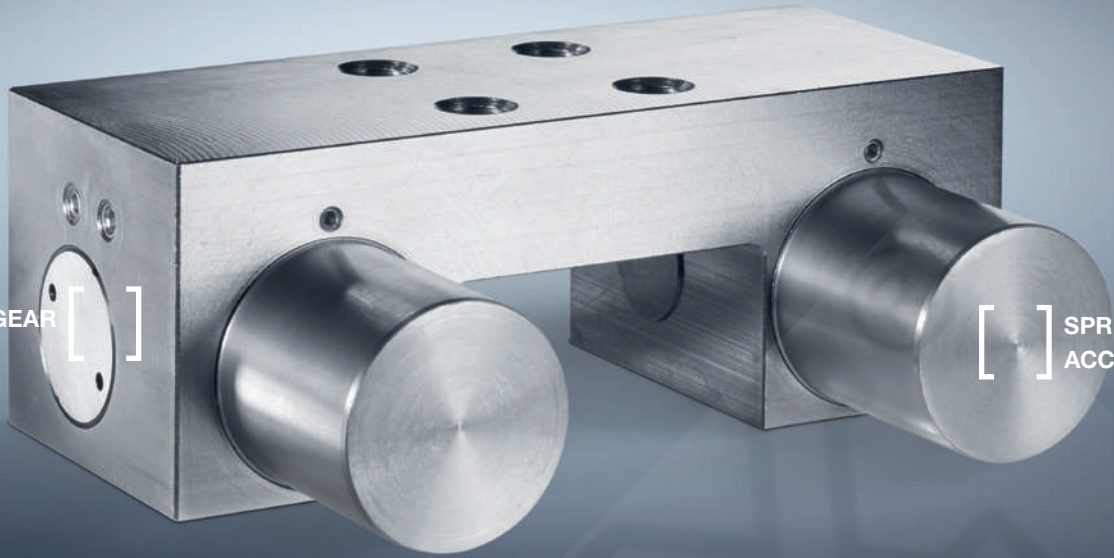
**PHONE NO.**

61464444 / 9967550131

**EMAIL**

[sales@apexprecision.co.in](mailto:sales@apexprecision.co.in)

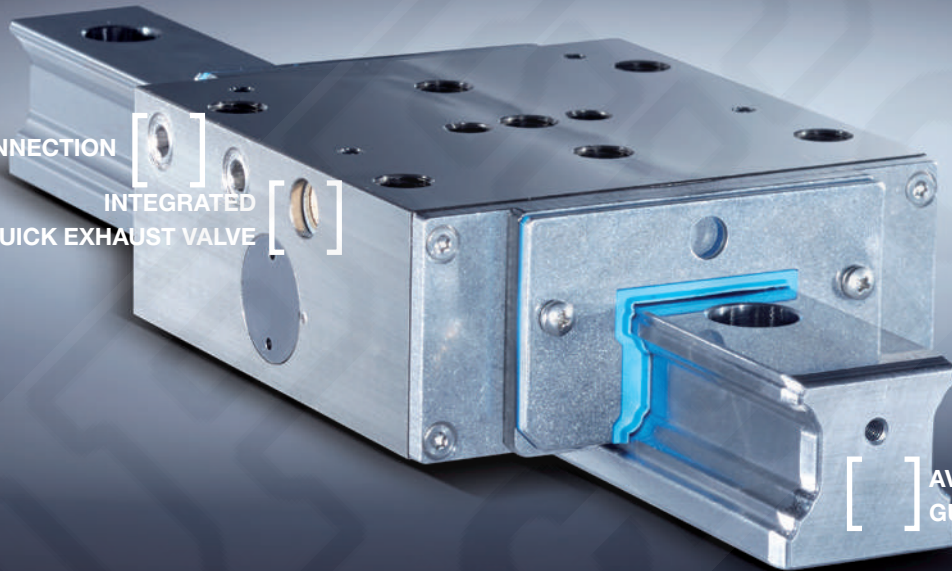
WEDGE-TYPE GEAR [ ]



[ ] SPRING ACCUMULATOR

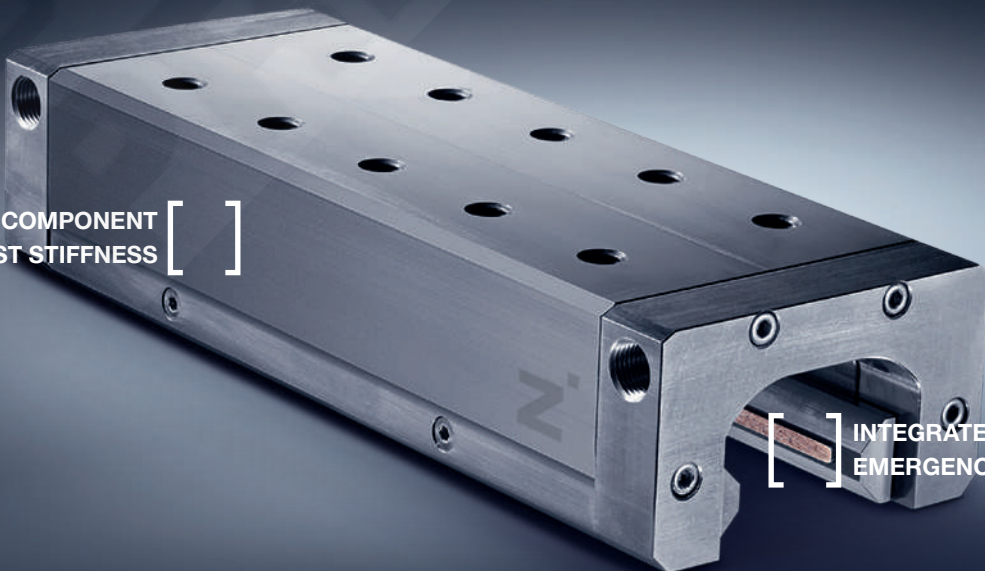
PLUS CONNECTION [ ]

INTEGRATED QUICK EXHAUST VALVE [ ]



[ ] AVAILABLE FOR ALL GUIDE RAILS AND SIZES



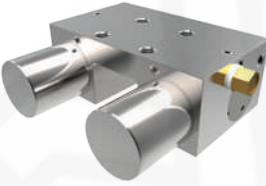







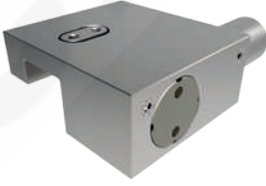
ONE FUNCTIONAL COMPONENT [ ]  
HIGHEST STIFFNESS [ ]



[ ] INTEGRATED EMERGENCY BRAKE FUNCTION

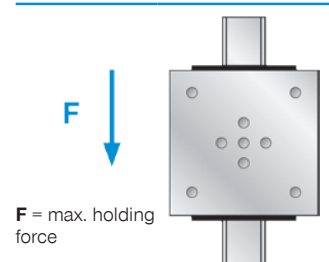
# LINEAR TECHNOLOGY

## THE SERIES AT A GLANCE





PROFILE RAIL GUIDES			
MANUAL		PNEUMATIC	
CLAMPING		CLAMPING	CLAMPING AND BRAKING
N		NO	NC
<b>HK</b>	Holding force up to 2,000 N <i>Standard</i>	<b>MK</b>	Holding force up to 2,250 N <i>Standard</i>
			
		<b>MKS</b>	Holding force up to 3,300 N <i>Standard</i>
			
			<b>MBPS</b>
			Holding force up to 4,700 N <i>Standard</i>
			
			<b>UBPS</b>
			Holding force up to 7,700 (9,200) N <i>Standard</i>
			
		<b>LKP</b>	Holding force up to 2,500 N <i>Narrow</i>
			
		<b>LKPS</b>	Holding force up to 1,900 N <i>Narrow</i>
			
		<b>LBPS</b>	Holding force up to 1,900 N <i>Narrow</i>
			
<b>MINIHK</b>	Holding force up to 300 N <i>Miniature</i>	<b>MCP</b>	Holding force up to 550 N <i>Miniature</i>
			
		<b>MCPS</b>	Holding force up to 700 N <i>Miniature</i>
			

### HOLDING FORCE






The holding force is the maximum force that can be generated in the axial direction. The specified holding forces are tested on every clamping and braking unit before delivery using a slightly lubricated rail (ISO VG 68). Using other oil or lubricating substances can influence the coefficient of friction, which can cause a loss of holding force in individual cases.



## PROFILE RAIL GUIDES

HYDRAULIC		ELECTRICAL	
CLAMPING	CLAMPING AND BRAKING	CLAMPING	
NO	NO	NC	N
<b>KWH</b> Holding force up to 46,000 N Standard 	<b>KBH</b> Holding force up to 46,000 N Standard 	<b>LBHS</b> Holding force up to 15,000 N Narrow 	<b>LCE</b> Holding force up to 1,100 N Standard 

## CIRCULAR AND SHAFT GUIDES

MANUAL	PNEUMATIC		
CLAMPING	CLAMPING	CLAMPING AND BRAKING	
N	NO	NC	NC
<b>HKR</b> Holding force up to 2,000 N Standard 	<b>MKR</b> Holding force up to 1,850 N Standard 	<b>MKRS</b> Holding force up to 1,650 N Standard 	<b>RBPS</b> Holding force up to 35,000 N Standard 
		<b>TPS</b> Holding torque static up to 770 Nm Rotary 	

**N (bistable):**  
Remains fixed in the current position

**NO (Normally Open):**  
Open at loss of pressure

**NC (Normally Closed):**  
Closed at loss of pressure

