



APEX PRECISION MECHATRONIX PVT.LTD.

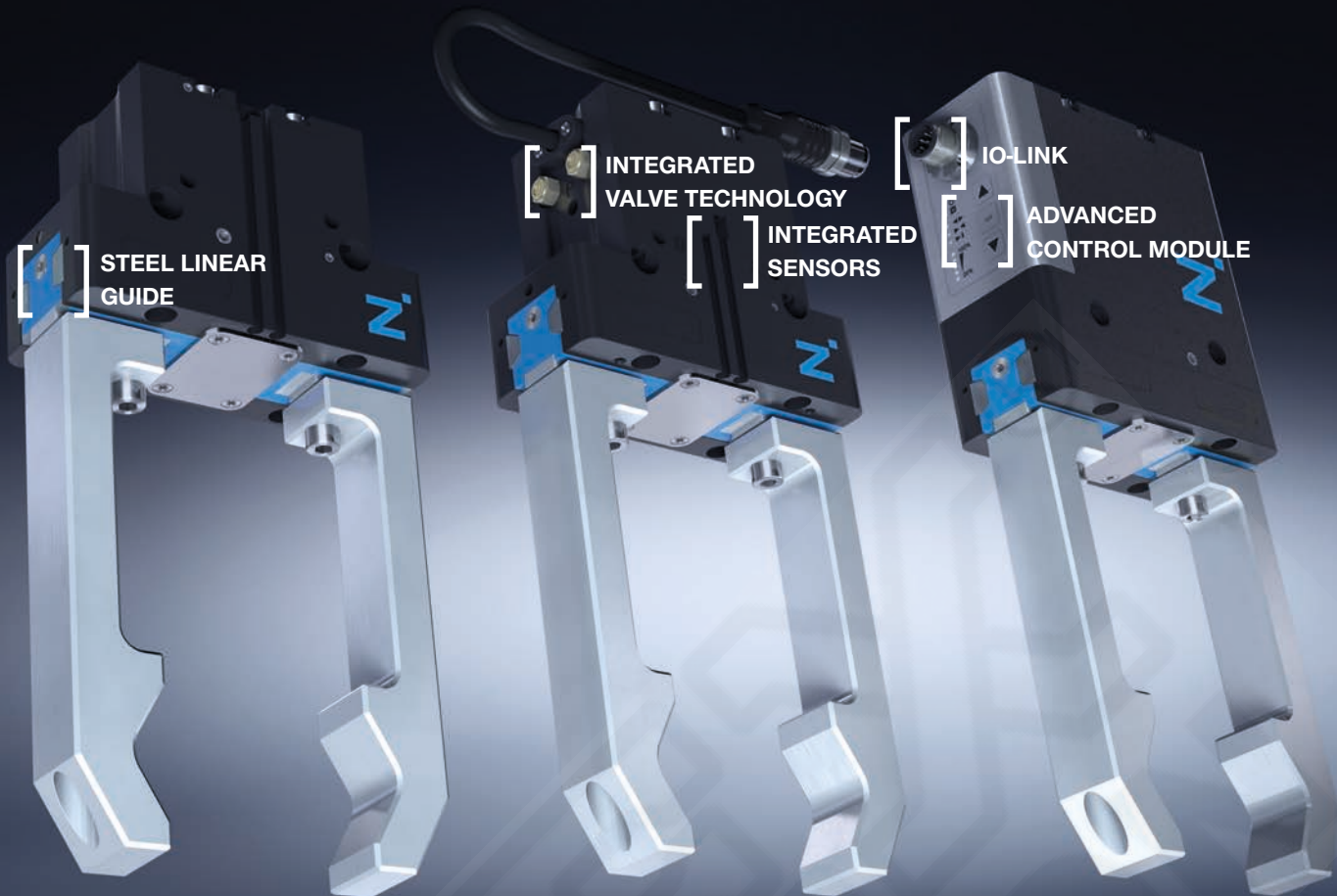
303-308, Krishna Bhuvan Annex, 22-B, Govandi
Station Road, Deonar, Mumbai - 400088,
Maharashtra,
INDIA.

PHONE NO.

61464444 / 9967550131

EMAIL

sales@apexprecision.co.in



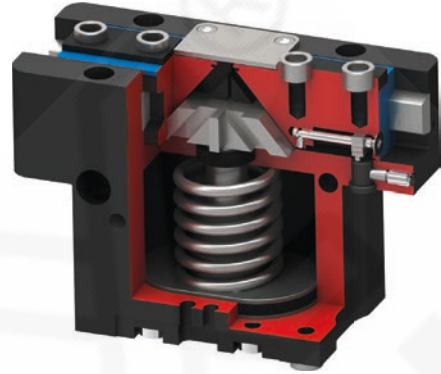
HANDLING TECHNOLOGY

GRIPPER TECHNOLOGY HIGHLIGHTS

OUR EXPERTISE – YOUR ADVANTAGES

“The Universal One”

- ▶ Up to 30 % more gripping force than the Benchmark
- ▶ 10% higher static forces and torques than the Benchmark
- ▶ Gripper fingers up to 10 % longer than the Benchmark
- ▶ Gripper finger weight up to 15 % higher than the Benchmark
- ▶ Sealed IP64 guide / IP67 protector version (with sealing air)
- ▶ Protected against corrosion
- ▶ Up to 30 million cycles without maintenance



DURABLE

Our product portfolio is coordinated to the needs of our customers and provides the perfect solution for any application. The 5000 series provides you with a comprehensive worry-free package – including corrosion protection, IP67 and 30 million cycles without maintenance.

UNIVERSAL

Mechatronic grippers make any type of production more flexible. Since 1992, they have been an established part of our supply product range, as they combine maximum performance with simple operation. The 5000 series combines features from pneumatics, electrical systems and hybrid technology.

PRECISE

We have been continually developing and improving our grippers since 1980. These years of experience are reflected in each gripper, and especially in our [premium GPP5000 universal grippers](#).



Pneumatic



Electric



Hybrid



HANDLING TECHNOLOGY

GRIPPERS

GRIPPERS

2-JAW PARALLEL GRIPPERS

PNEUMATIC

GPP1000



Stroke per jaw: 4 mm - 16 mm
Gripping force: 100 N
Weight: 0.16 kg - 0.20 kg
IP class: 30
Maintenance free (max.): 2 million cycles

MGP800



Number of installation sizes: 8
Stroke per jaw: 1 mm - 12 mm
Gripping force: 6 N - 400 N
Weight: 0.008 kg - 0.46 kg
IP class: 40
Maintenance free (max.): 10 million cycles

GP400



Number of installation sizes: 9
Stroke per jaw: 3 mm - 30 mm
Gripping force: 85 N - 19,275 N
Weight: 0.08 kg - 18.9 kg
IP class: 40
Maintenance free (max.): 10 million cycles

GPP5000

IO-Link



Number of installation sizes: 11
Stroke per jaw: 2.5 mm - 45 mm
Gripping force: 140 N - 26,950 N
Weight: 0.08 kg - 50 kg
IP class: 64/67
Maintenance free (max.): 30 million cycles

ELECTRICAL

GEP9000



Number of installation sizes: 2
Stroke per jaw: 2 mm - 4 mm
Gripping force: 11 N - 50 N
Weight: 0.25 kg - 0.57 kg
IP class: 40
Maintenance free (max.): 30 million cycles

GEP2000

IO-Link



Number of installation sizes: 3
Stroke per jaw: 10 mm - 16 mm
Gripping force: 50 N - 500 N
Weight: 0.79 kg - 1.66 kg
IP class: 40
Maintenance free (max.): 10 million cycles

GEP5000

IO-Link



Number of installation sizes: 3
Stroke per jaw: 6 mm - 10 mm
Gripping force: 540 N - 1,900 N
Weight: 0.79 kg - 1.66 kg
IP class: 64
Maintenance free (max.): 30 million cycles

2-JAW PARALLEL GRIPPERS WITH LONG STROKE

PNEUMATIC

MGH8000



Number of installation sizes: 3
Stroke per jaw: 10 mm - 100 mm
Gripping force: 60 N - 910 N
Weight: 0.35 kg - 7.3 kg
IP class: 64
Maintenance free (max.): 10 million cycles

GH6000



Number of installation sizes: 5
Stroke per jaw: 20 mm - 200 mm
Gripping force: 120 N - 3,400 N
Weight: 0.3 kg - 23.8 kg
IP class: 40
Maintenance free (max.): 10 million cycles

GPB8000



Number of installation sizes: 1
Stroke per jaw: 62.5 mm - 150 mm
Gripping force: 2000 N
Weight: 14.9 kg - 21.3 kg
IP class: 54
Maintenance free (max.): 5 million cycles

ELECTRICAL

GEH6000IL

IO-Link



Number of installation sizes: 2
Stroke per jaw (max.): 80 mm
Gripping force: 60 N - 2,400 N
Weight: 0.76 kg - 2.6 kg
IP class: 40/54
Maintenance free (max.): 5 million cycles

3-JAW CONCENTRIC GRIPPERS

PNEUMATIC

MGD800



Number of installation sizes: 8
Stroke per jaw: 1 mm - 12 mm
Gripping force: 30 N - 1,420 N
Weight: 0.025 kg - 2 kg
IP class: 40
Maintenance free (max.): 10 million cycles

GPD5000

IO-Link



Number of installation sizes: 11
Stroke per jaw: 2.5 mm - 45 mm
Gripping force: 310 N - 72,500 N
Weight: 0.14 kg - 100 kg
IP class: 64/67
Maintenance free (max.): 30 million cycles

ELECTRICAL

GED5000

IO-Link



Number of installation sizes: 3
Stroke per jaw: 6 mm - 10 mm
Gripping force: 540 N - 1,900 N
Weight: 1.09 kg - 2.33 kg
IP class: 64
Maintenance free (max.): 30 million cycles

3-JAW CONCENTRIC GRIPPERS WITH LONG STROKE

PNEUMATIC

GD500



Number of installation sizes: 3
Stroke per jaw: 30 mm - 160 mm
Gripping force: 1,300 N - 2,480 N
Weight: 7.4 kg - 29 kg
IP class: 40
Maintenance free (max.): 10 million cycles

2-JAW ANGULAR GRIPPERS

PNEUMATIC

GZ1000



Number of installation sizes: 3
Stroke per jaw: 8° - 10°
Gripping force: 62 N - 315 N
Weight: 0.015 kg - 0.125 kg
IP class: 30
Maintenance free (max.): 10 million cycles

MGW800



Number of installation sizes: 8
Stroke per jaw: 37.5°
Gripping force: 5 N - 325 N
Weight: 0.01 kg - 0.45 kg
IP class: 30
Maintenance free (max.): 10 million cycles

GRIPPERS

GG1000



Number of installation sizes:	4
Stroke per jaw:	20°
Gripping force:	2,910 N - 29,110 N
Weight:	1.3 kg - 13 kg
IP class:	40
Maintenance free (max.):	10 million cycles

GPW5000



Number of installation sizes:	3
Stroke per jaw:	+15° / -2°
Gripping force:	1,330 N - 14,500 N
Weight:	0.9 kg - 12.1 kg
IP class:	64
Maintenance free (max.):	30 million cycles

2-JAW RADIAL GRIPPERS

PNEUMATIC

GK



Number of installation sizes:	6
Stroke per jaw:	90°
Gripping force:	70 N - 4,250 N
Weight:	0.1 kg - 4.1 kg
IP class:	20
Maintenance free (max.):	10 million cycles

GG4000



Number of installation sizes:	6
Stroke per jaw:	90°
Gripping force:	430 N - 4,000 N
Weight:	0.25 kg - 4.5 kg
IP class:	64
Maintenance free (max.):	10 million cycles

GRIPPERS FOR SPECIAL TASKS

INTERNAL GRIPPERS

PNEUMATIC

LGS

LG1000

LGG



Number of installation sizes:	25
Full stroke in Ø:	1 mm - 16 mm
Gripper hole diameter:	4 mm - 135.5 mm
Weight:	0.031 kg - 2.7 kg

OUTER O-RING ASSEMBLY GRIPPERS

PNEUMATIC

GS

GSI



Number of installation sizes:	4
O-ring Ø:	4 mm - 130 mm
Expanding force:	240 N - 1,450 N
Weight:	0.5 kg - 5.4 kg

NEEDLE GRIPPERS

PNEUMATIC

ST

SCH



Number of installation sizes:	4
Adjustable needle stroke:	0 mm - 6 mm
Weight:	0.21 kg - 0.45 kg

ELECTRICAL

GEN9100



Adjustable needle stroke:	0 mm - 2 mm
Weight:	0.33 kg
IP class:	50

MAGNETIC GRIPPERS

PNEUMATIC

HM1000



Number of installation sizes:	4
Adhesive force (max.):	27 N - 450 N
Weight:	0.06 kg - 2.2 kg

ELECTRICAL

HEM1000



Number of installation sizes:	4
Adhesive force (max.):	40 N - 720 N
Weight:	0.09 kg - 1.3 kg

ROTARY GRIPPERS

2-JAW ANGULAR ROTARY GRIPPERS

PNEUMATIC

DGK



Stroke per jaw:	90°
Gripping force:	150 N
Weight:	0.55 kg

2-JAW PARALLEL ROTARY GRIPPERS

PNEUMATIC

DGP400



Stroke per jaw:	4 mm
Gripping force:	115 N - 155 N
Weight:	0.44 kg - 0.48 kg

HANDLING TECHNOLOGY

SWIVEL AND ROTARY MODULES

OUR EXPERTISE – YOUR ADVANTAGES

“Superior”

► Up to 100% more performance than the Benchmark

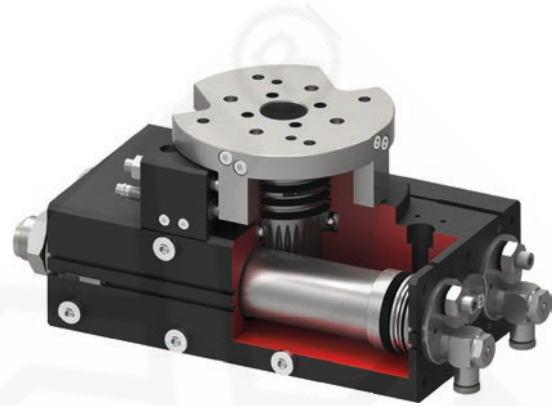
Superior end position damping lets you swivel more mass in the shortest amount of time, increasing your machine's component output

► Large center bore

Reduce the interference contours in your application by placing your power supply line directly through the middle of the rotary flange

► More than 100% higher radial bearing load than the Benchmark

The generously scaled bearings stand for robustness and long service life and provide the highest process reliability for your application



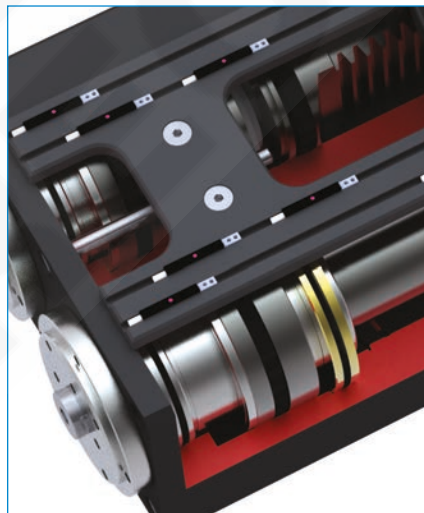
HIGH-PERFORMANCE

When it comes to swiveling, the shortest possible cycle time is the first priority. Our in-house developed shock absorbers with spiral groove technology provide the market's best end position damping – perfect for our [high-performance swivel units](#) with their extremely short cycle times.



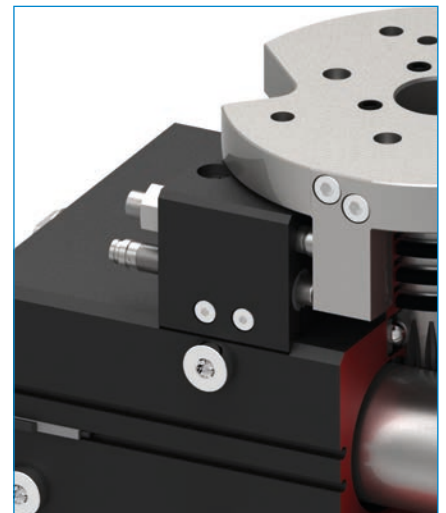
TRIED AND TESTED

As a pioneer from the very beginning, we are offering you a comprehensive product range that is constantly raising the bar. In addition to the world's first shock-absorbed angle pivot unit, we also developed products such as the first flat swivel unit with a [locking middle position](#).



ROBUST

Generously scaled bearings make it possible for our units to handle a great deal. Where others may lose a tooth now and then, we can offer you a virtually wear-free gear drive with [external stops](#).



SWIVEL AND ROTARY MODULES

ROTOR CYLINDER

PNEUMATIC

PRN



Number of installation sizes: 9
Swivel angle: 90° - 270°
Torque: 0.15 Nm - 247 Nm
Weight: 0.04 kg - 12.5 kg
IP class: 54
Maintenance free (max.): 1.5 million cycles

SWIVEL JAWS

PNEUMATIC

SB



Number of installation sizes: 3
Swivel angle: 90° - 180°
Torque: 0.1 Nm - 1.6 Nm
Weight: 0.3 kg - 2.2 kg
IP class: 54
Maintenance free (max.): 10 million cycles

FLAT SWIVEL UNITS

PNEUMATIC

MSF



Number of installation sizes: 3
Swivel angle: 90° - 180°
Torque: 0.3 Nm - 1.2 Nm
Weight: 0.17 kg - 0.46 kg
IP class: 41
Maintenance free (max.): 10 million cycles

SBZ



Number of installation sizes: 5
Swivel angle: 90° - 180°
Torque: 1.2 Nm - 57 Nm
Weight: 0.45 kg - 28 kg
IP class: 54
Maintenance free (max.): 10 million cycles

SF



Number of installation sizes: 6
Swivel angle: 0° - 180°
Torque: 1.5 Nm - 130 Nm
Weight: 0.6 kg - 41.1 kg
IP class: 64
Maintenance free (max.): 10 million cycles

ELECTRICAL

DES



Number of installation sizes: 2
Swivel angle: unlimited
Torque: 12 Nm - 64 Nm
Weight: 4 kg - 15.9 kg
IP class: 54
Maintenance free (max.): 5 million revs

ANGLE PIVOT UNITS

PNEUMATIC

SWM1000



Number of installation sizes: 4
Swivel angle: 90°
Torque: 10 Nm - 64 Nm
Weight: 0.65 kg - 3.5 kg
IP class: 30
Maintenance free (max.): 10 million cycles

SW



Number of installation sizes: 6
Swivel angle: 180°
Torque: 1.5 Nm - 120 Nm
Weight: 1.2 kg - 48.2 kg
IP class: 64
Maintenance free (max.): 10 million cycles