

SPRINT PLUS TOWER

- ✘ Fan Size : 16 inch
- ✘ Material : PP & CP
- ✘ Tank Capacity : 85 Ltrs. Approx
- ✘ Dimensions : 24x16x47 Inch
- ✘ Large Ice Chamber
- ✘ Available in Blue & Orange Color
- ✘ Fully Collapsible Louvers
- ✘ Trolley & Wheel Available



SPRINT -16

- ✘ Fan Size : 16 inch
- ✘ Material : PP & CP
- ✘ Tank Capacity : 60 Ltrs. Approx
- ✘ Dimensions : 22x17x37 Inch
- ✘ Available in Blue & Orange Color
- ✘ Available with Grasspad & Honeycomb

Domestic Plastic Air Cooler, Plastic Air Cooler Body, Sprint 16 Air Cooler Body, Sprint -16 Plastic Air Cooler Body, Sprint Jumbo Plus Tower Air Cooler, Sprint Jumbo Plus Tower Air Cooler Body, Sprint Junior Plastic Air Cooler Body, Sprint Junior Tower Air Cooler, Sprint Mini Tower Air Cooler Body, Sprint NEO Air Cooler, Sprint Nano Plastic Air Cooler, Sprint Nano Plastic Air Cooler Body, Sprint Nexon Cooler Tower, Sprint Plus Tower Air Cooler, Sprint Plus Tower Plastic Air Cooler Body, etc.



SUMO TOWER PLASTIC AIR COOLER



SPRINT NEXON COOLER TOWER



SPRINT NANO PLASTIC AIR COOLER

About Us

Not every company succeeds in earning a reputed position in the market that too in a short time duration but Shivam Enterprise has successfully done the same. Laid the foundation stone back in the year 2019, our company has not only won the trust of the customers but also become their favorite choice when it comes to buying Domestic Plastic Air Cooler, Domestic Portable Air Cooler, Plastic Air Cooler Body, Tower Air Cooler Body, High Quality Plastic Air Cooler and more. Both the Coolers and their body structure are made up of high-class plastic as per the national norms, which enhance their performance as well as increases their durability. The exceptional quality of our products made us a trusted manufacturer and wholesaler in the market.

To achieve our goal of attaining a top-most position in the industry, we are giving our best shot in all the tasks and trying to match global standards. We follow modern techniques and methods to produce our goods in compliance with the industry set norms & guidelines. Right from procuring raw components till the final packaging; all the processes are carried out in a professional way to deliver the best to customers.

Shivam Enterprise is an emerging Delhi, India based manufacturing corporation which has complete know-how about Domestic Air Cooler, Plastic Air Cooler, Domestic Portable Air Cooler, Plastic Air Cooler Body and allied items. The company is managed by a group of skilled professionals, who hold immense experience in this domain. They have complete knowledge about the coolers market according to which they make marketing strategies. Whether it is the production, sales & marketing, packaging, quality analyzing or engineering, all the departments are handled by qualified personnel. To support experts, requisite machines and tools have been installed by us in our premises for helping experts in smoothly executing business operations. Every year, we make some modifications in our amenities to have hassle-free operations and meet growing customers requirements.

Key Facts

No of Staff	10
Year of Establishment	2019
OEM Service Provided	No
Monthly Production Capacity	5000

Our Products



Sprint Jumbo Plus Tower Air Cooler Body



Sprint Plus Tower Air Cooler



Sprint Junior Plastic Air Cooler Body



Sprint Sumo Tower Plastic Air Cooler Body



Domestic Plastic Air Cooler



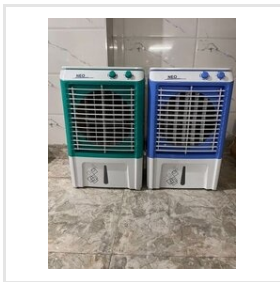
Plastic Air Cooler Body



Sprint 16 Air Cooler Body



Sprint Nexon Cooler Tower



Sprint NEO Air Cooler



Sprint Mini Tower Air Cooler Body



Sprint Junior Tower Air Cooler



Sprint Jumbo Plus Tower Air Cooler



Sprint Nano Plastic Air Cooler Body



Sprint Plus Tower Plastic Air Cooler Body



Sprint Nano Plastic Air Cooler



Sprint -16 Plastic Air Cooler Body



ADDRESS

Plot no. 72, Pocket – II, Sector-5,
Bawana Industrial Area, Delhi,
Delhi, India (110039).



EMAIL

shivamgoel5670@gmail.com



MOBILE

+918287118833



WEBSITE

www.sprintaircooler.com

KEY PERSONNEL
Shivam Goyal
(PROPRIETOR)