

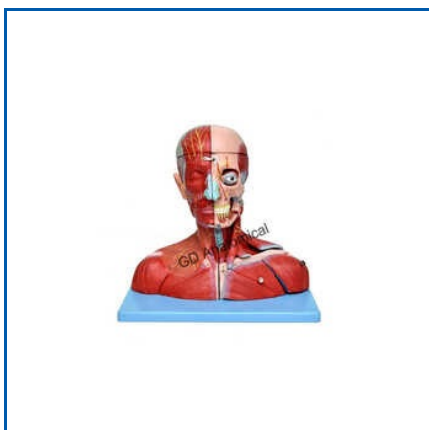


**MANUFACTURER, SUPPLIER**  
**PHARMACOLOGY MODELS**  
**MATERNITY MODELS**

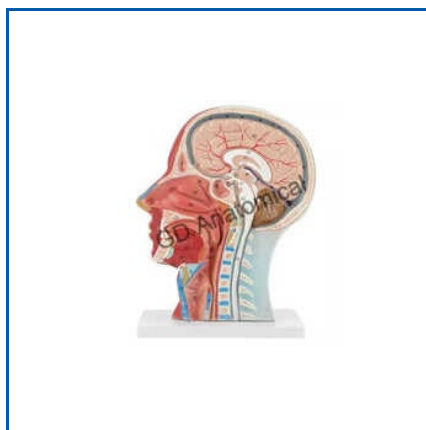
Customer Faith Well-Kept  
For Lifetime.



15-Part Laryngeal Cardiopulmonary Anatomy Model, 2-Part Life Size Human Heart, 3-Mini Heart Model Set, 3-Part Life-Size Didactic Human Skull Anatomy Model, 3-Part Life-Size Human Skull Anatomy Model, 3-Part Life-Size Human Skull Numbered Anatomy Model, 3x Life Size Right Kidney Anatomy Model, 4 Piece Bronchus Anatomy Model, 5th Cervical Vertebra, 8-Part Deluxe Human Brain Anatomy Model With Arteries, Aging Skin - Hair Loss And Normal Skin Model, Anatomical Human Neuron Model, etc.



**HEAD AND NECK WITH VESSELS-  
NERVES AND BRAIN**



**BRAIN WITH HEAD**



**8-PART DELUXE HUMAN BRAIN  
ANATOMY MODEL WITH ARTERIES**



## About Us

G. D. Biological Model Works is our company dealing in high quality anatomical and physiological models like Anatomy Models, Physiology Models, Nursing Models, Pathology Models, and Embryology Models. Each model is designed at our manufacturer and supplier company to provide accurate representations of human anatomy and physiology as an essential tool for education and training in medical fields. Because our products focus on anatomical accuracy along with educational value, they can meet the high standards of medical training, at the same time contributing to significant patient education and professional development in the healthcare field. In order to have efficiency in execution of production and post-production activities, we have invested a major portion of our capital in setting up a sound infrastructure.

Our company, G. D. Biological Model Works, is dedicated to becoming the world's leading manufacturer and supplier of the best anatomical and physiological models for improvement in education and training related to medicine. Since 1958, our company Ambala Cantt, Haryana, India has been serving customers on the basis of excellence. Customers trust us to make purchase of Community Models, Micro Biology Models, Pharmacology Models, Bio-Chemistry Models, etc. We are committed to empowering learners and practitioners with the right tools they need to excel in their fields.



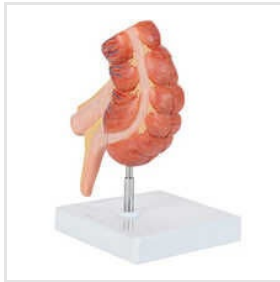
## Key Facts

<b>Nature of Business</b>	Manufacturer
<b>Primary Competitive Advantages</b>	human anatomical models,
<b>No of Staff</b>	15
<b>Year of Establishment</b>	1958
<b>No of Production Lines</b>	2
<b>OEM Service Provided</b>	Yes
<b>Monthly Production Capacity</b>	As Per Order
<b>ProductRange</b>	human anatomical models,

## Our Products



**Eye Anatomical Model**



**Appendix And Caecum**



**Full Eye Model**



**Transparent Dental Model**



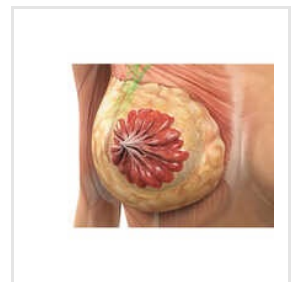
**Human Eye With Orbit**



**Brainstem Model**



**Ear Anatomical Model**



**Female Breast Models**



**Lower Jaw Of A 12-Year-Old- Anatomical**



**Full Dental Model**



**Human Stomach Anatomy Model**



**Development Of A Set Of Teeth Model**



**Ear With Pinna**



**Human Liver Anatomical Model**



**Digestive System Model**



**Labyrinth Anatomical Model**



**G. D. BIOLOGICAL MODEL WORKS**  
Iso Certified

+917206260687



ADDRESS

Plot No. 12-A, Nishat Bagh,  
Behind B.D. Flour Mill, Ambala  
Cantt, Haryana, India (133001).



EMAIL

[laliv1986@gmail.com](mailto:laliv1986@gmail.com)



MOBILE

+917206260687



WEBSITE

[www.gdbiologicalmodel](http://www.gdbiologicalmodel.com)

KEY PERSONNEL  
**Harsh Verma**  
(

DESIGNED AND  
DEVELOPED BY

**trade**  
**india.**