

## Hydrotest System

**Max. Pressure Up to 1380 Bar (20,000 PSI)**

**Max. Flow Rate Up to 445 LPM**

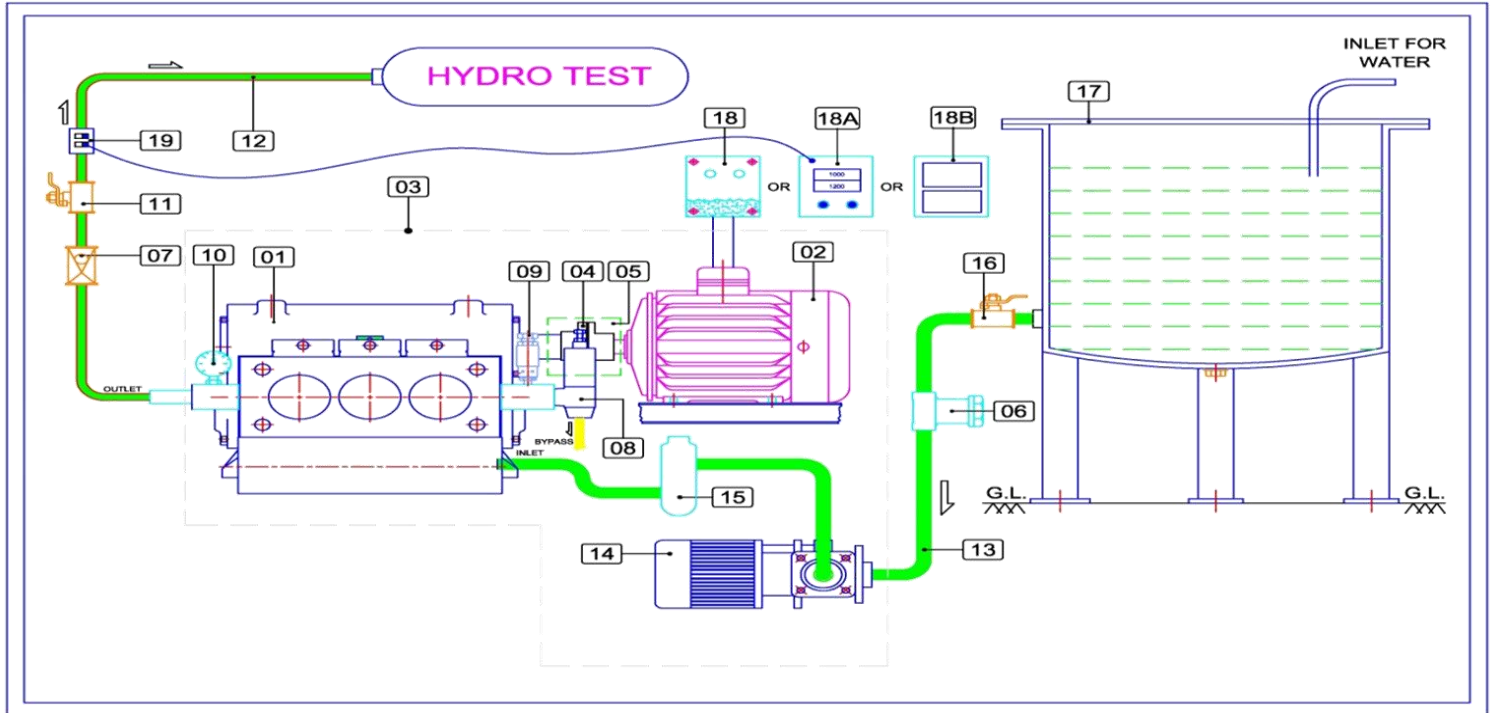
**Max. Power Up to 180 HP**



### Series Wise Model Selection Chart

Technical Data	SERIES									
	HW	PA	PB	PC	VA	VC	KB	KBD	KD	KDD
<b>Max. Pressure @ Max. Flow</b>	500 Bar @ 30 LPM	180 Bar @ 80 LPM	500 Bar @ 30 LPM	1200 Bar @ 9 LPM	205 Bar @ 104 LPM	1380 Bar @ 15 LPM	745 Bar @ 62 LPM	200 Bar @ 190 LPM	525 Bar @ 110 LPM	1380 Bar @ 43 LPM
<b>Min. Flow @ Max. Pressure</b>	14 LPM @ 140 Bar	52 LPM @ 175 Bar	21 LPM @ 500 Bar	5 LPM @ 1200 Bar	87 LPM @ 205 Bar	15 LPM @ 1380 Bar	45 LPM @ 625 Bar	190 LPM @ 200 Bar	110 LPM @ 525 Bar	30 LPM @ 1380 Bar
<b>Max. Flow @ Min. Pressure</b>	70 LPM @ 150 Bar	133 LPM @ 100 Bar	55 LPM @ 240 Bar	17 LPM @ 750 Bar	200 LPM @ 105 Bar	32 LPM @ 740 Bar	145 LPM @ 320 Bar	234 LPM @ 160 Bar	445 LPM @ 155 Bar	96 LPM @ 600 Bar
<b>Motor HP</b>	2 to 40 HP	20 to 40 HP	20 to 40 HP	15 to 40 HP	40 to 60 HP	50 to 60 HP	60 to 120 HP	60 to 100 HP	100 to 180 HP	100to150HP
<b>Transmission</b>	Direct Couple	Gear Drive	Gear Drive	Gear Drive	Gear Drive	Gear Drive	Internal Gear Drive	Internal Gear Drive	Internal Gear Drive	Internal Gear Drive

## Line Diagram for Hydrotest



## List of Accessories

Sr. No.	Item	Sr. No.	Item
01	Bare Pump	12	High Pressure Hose
02	Electric Motor	13	Low Pressure Suction Hose
03	Skid (Base Frame / Trolley)	14	Booster Pump
04	Coupling	15	Suction Stabilizer
05	Coupling Guard	16	Ball Valve (Low Pressure)
06	Strainer (Suction Filter)	17	Over Head Water Tank
07	Non Return Valve	18	Starter / Control Panel
08	Pressure Regulating Valve	18 A	Auto Pressure Controller
09	Safety Valve / Rupture Dis	18 B	PLC / SCADA System
10	Pressure Gauge – Glycerin Filled	19	Pressure Transducer
11	High Pressure Ball Valve		

## Hydrotest System Accessories



Pressure Relief Valve



Safety Valve



High Pressure Ball Valve



Non Return Valve



Strainer



Pressure Gauge



Hose Pipe



Electric Control Panel

## Technical Details

All Systems are guaranteed for low power consumption, optimal connecting load, interchange ability of spares, minimum and easy maintenance and easy to operate by even a layman.

## Technical Specifications

<b>Pump Type</b>	:	Reciprocating Triplex Plunger Pump
<b>Maximum Flow</b>	:	445 Ltrs/Min
<b>Maximum Pressure</b>	:	20,000 psi (1400 bar)
<b>Pulsation</b>	:	NO PULSATION DAMPENER required.
<b>Mounting</b>	:	Skid / Trailer / Road going / Container Type
<b>Electric motor type</b>	:	Standard-TEFC / Flameproof / Explosion proof
<b>Voltage</b>	:	380, 415, 440 as standard. Others on request
<b>Frequency</b>	:	50 / 60 Hz
<b>Liquid contact parts material options</b>	:	SS304 / SS410 / Brass / SS
<b>Plunger options</b>	:	Solid Ceramic/ Ceramic Coating / Tungsten Carbide Coating/Hard Chrome Coating/ Colomony Coating etc.
<b>Driver Options</b>	:	Electric Motor / Diesel Engine / Petrol Engine / Hydraulic Motor
<b>Transmission Options</b>	:	Direct couple, Internal/External Gear Box, Belt Pulley, PTO etc.

### Automations:

- APC (Automatic pressure controller) to set the pressure digitally and system shuts off at that pressure
- Computerized chart recorder
- Controller to rise-hold-decrease the pressure as per the requirement automatically
- Digital pressure display
- Digital Stroke Counter etc.

### **Combined- Filling cum Pressurizing System:**

- We design and supply conventional as well as fully automatic unique COMBINED SYSTEM of filling pump and pressurizing pump.
- Filling pump can be high flow, low pressure Triplex Plunger pump or Multi stage centrifugal pump.
- Pressurizing pump is low volume, high pressure plunger pump.
- For very high volume, one intermediate pump (medium flow medium pressure plunger pump) can be used

### **We have supplied Hydro Test Systems to test:**

Cross-country pipe lines	Heat exchangers
Valves	Condensers
Pumps	Evaporators
Hydraulic Hoses	Boilers
Pipes & Tubes	Fire Extinguishers
Pressure vessels	High pressure fittings and components
Tanks	Welding Joints
Castings	Forgings
Turbine casings	Building water & gas lines

## **PressureJet Systems Pvt. Ltd.**

21-24, Panchratna Industrial Estate, Village: Paldi Kankaj, Taluka: Dascroi,  
Ahmedabad-382427, Gujarat, India

- Sales Mobile: +91-93759 22363 & +91-6351895009 & +91-9375022359
- Email: [highpressurepumps@pressurejet.com](mailto:highpressurepumps@pressurejet.com) & [sales@pressurejet.com](mailto:sales@pressurejet.com)

URL: [www.pressurejet.com](http://www.pressurejet.com)