

# Stainless Steel Industrial RO Plant

Customer faith well-kept for lifetime.



1000 L Water Purification Machine, 1000 LPH Industrial Reverse Osmosis Plant, 2000 LPH RO Plant, 250 LPH RO Water Purifier, 30 BPM Water Bottling Machine, 500 LPH Commercial Reverse Osmosis System, 500 Lph Industrial Reverse Osmosis Plant, Automatic Drinking Water Bottling Plant, Automatic Filling Machine, Automatic Mineral Water Bottling Plant, Commercial Water Bottling Plant, Fruit Juice Processing Plant, Industrial RO System, Industrial Water Purifier, Mineral Water Filling Machine, etc.



2000 LPH RO PLANT



INDUSTRIAL RO SYSTEM



REVERSE OSMOSIS SYSTEM

## About Us

Atlanta RO Industries stands as a trusted name in the domain of water purification and packaging machinery, delivering advanced, sustainable, and high-performance systems tailored for industrial and commercial applications. As a nature of business, Manufacturer and Supplier, the company ensures every solution is engineered with a balance of innovation, functionality, and reliability. The comprehensive product lineup includes industrial reverse osmosis plants, industrial water purifiers, commercial water bottling plants, packaged water treatment plants, mineral water filling machines, water pouch packing machines, mineral water packing machines, and pet blow moulding semi-automatic machines.

Established in 2005, Atlanta RO Industries is a leading Manufacturer and Supplier based in New Delhi, Delhi, India, specializing in a wide range of water purification and packaging machinery. The company is known for delivering end-to-end solutions including industrial reverse osmosis plants, industrial water purifiers, water bottling plants, and mineral water packing systems. With a production-driven approach and customer-first philosophy, the organization consistently delivers scalable, high-performance, and energy-efficient machines. With over a decade of industry experience and a lean yet expert workforce, Atlanta RO Industries ensures every system adheres to quality benchmarks while offering seamless installation and long-term support. The firm's infrastructure is equipped with advanced machinery and a streamlined process that allows swift delivery and consistent excellence. The company continues to serve clients across sectors with solutions that not only meet today's needs but also scale with future demand.

## Key Facts

<b>No of Staff</b>	15
<b>Year of Establishment</b>	2005
<b>No of Production Lines</b>	1
<b>OEM Service Provided</b>	No
<b>Monthly Production Capacity</b>	Depends On Order

**Our Products**



**1000 L Water Purification Machine**



**250 LPH RO Water Purifier**



**Stainless Steel Mineral Water Bottling Plant**



**Mineral Water Plant**



**Automatic Drinking Water Bottling Plant**



**Pet Stretch Blowing Machine**



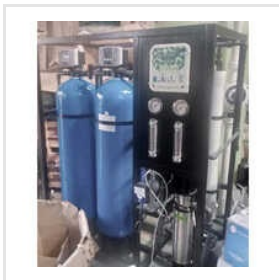
**Water Bottle Making Machine**



**Semi Automatic Mineral Water Plant**



**Stainless Steel Industrial RO Plant**



**500 LPH Commercial Reverse Osmosis**



**30 BPM Water Bottling Machine**



**Mineral Water Filling Machine**



**Water Purification System**



**500 LPH Industrial Reverse Osmosis Plant**



**1000 LPH Industrial Reverse Osmosis Plant**



**Industrial Water Purifier**



ADDRESS

**Bearing No. 13-A, Ground Floor,  
Raghu Nagar, New Delhi, Delhi,  
India (110045).**



EMAIL

**r.s.9313746551@gmail.com**



MOBILE

**+911143570373**



WEBSITE

**www.atlantarindustries.co.in**

KEY PERSONNEL  
**R S Sharma**  
(PROPRIETOR)