

The Complete **Plumbing** solution

## AGRICULTURE PIPES & FITTINGS

Agriculture & Water Distribution System

One Stop for  
multiple plumbing solution  
under one roof

Application :

- Agriculture Use.
- Irrigation Purpose Use.
- Chemical Distribution.
- Suitable for Water Distribution.
- Industrial Use.



PRODUCT FEATURES:



Light Weight



High Strength



UV Resistant



Effective Cost



Corrosion Resistant



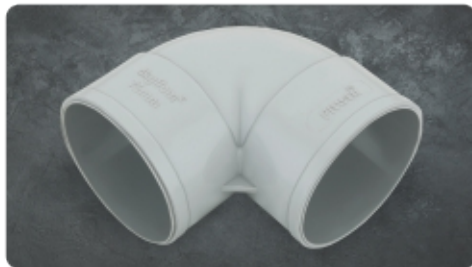
Easy to Install



Chemical Resistant



## AGRICULTURE PIPES & FITTINGS



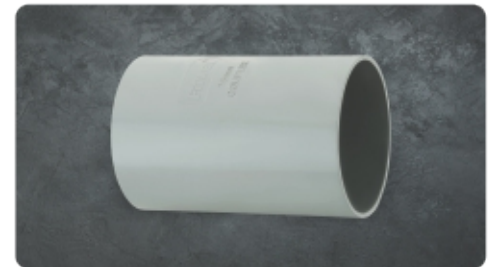
### ELBOW

Size (mm)	Size (Inch)	BOX	RATE
40	1.1/4"	350	
50	1.1/2"	200	
63	2"	100	
75	2.1/2"	120	
90	3"	82	
110	4"	36	



### TEE

Size (mm)	Size (Inch)	BOX	RATE
40	1.1/4"	-	
50	1.1/2"	-	
63	2"	72	
75	2.1/2"	84	
90	3"	50	
110	4"	26	



### COUPLER

Size (mm)	Size (Inch)	BOX	RATE
40	1.1/4"	-	
50	1.1/2"	-	
63	2"	350	
75	2.1/2"	154	
90	3"	125	
110	4"	68	



### M.T.A.

Size (mm)	Size (Inch)	BOX	RATE
40	1.1/4"	200	
50	1.1/2"	150	
63	2"	100	
75	2.1/2"	80	
90	3"	60	
110	4"	50	



### F.T.A.

Size (mm)	Size (Inch)	BOX	RATE
40	1.1/4"	150	
50	1.1/2"	100	
63	2"	100	
75	2.1/2"	70	
90	3"	40	
110	4"	30	



### REDUCER

Size (mm)	Size (Inch)	BOX	RATE
63x40	2"x1.1/4"	125	
63x50	2"x1.1/2"	125	
75x40	2.1/2"x1.1/4"	100	
75x50	2.1/2"x1.1/2"	100	
75x63	2.1/2"x2"	100	
90x50	3"x1.1/2"	84	
90x63	3"x2"	84	
90x75	3"x2.1/2"	84	
110x50	4"x1.1/2"	54	
110x63	4"x2"	78	
110x75	4"x2.1/2"	78	
110x90	4"x3"	78	



### SHOE BEND

Size (mm)	Size (Inch)	BOX	RATE
40	-	-	
63	-	-	
75	2.1/2"	92	
90	3"	-	
110	4"	52	



### PLAIN END CAP

Size (mm)	Size (Inch)	BOX	RATE
40	1.1/4"	-	
50	1.1/2"	-	
63	2"	150	
75	2.1/2"	125	
90	3"	80	
110	4"	50	



### REDUCER BUSH

Size (mm)	Size (Inch)	BOX	RATE
75X50	2.1/2"x1.1/2"	140	
75X63	2.1/2"x2"	140	
90X50	3"x1.1/2"	72	
90X63	3"x2"	72	
90X75	3"x2.1/2"	72	
110X63	4"x2"	50	
110X75	4"x2.1/2"	50	
110X90	4"x3"	50	



### PVC SOLVENT CEMENT

SIZE (ml.)	BOX	RATE
100ml	24	
250ml	24	
500ml	12	
1000ml	-	

**Fitwell™ PVC PIPES**



**ISI PVC PIPE WEIGHT LIST (6MTR)**

SIZE	4 KGF	6 KGF
2" (63 mm)		
2.1/2" (75 mm)		
3" (90mm)		
4" (110 mm)		
5" (140 mm)		
6" (160 mm)		
7" (180 mm)		
8" (200 mm)		
9" (225 mm)		
10" (250 mm)		

ISI PVC Pipe per Kg.

**PVC PIPE WEIGHT LIST (6MTR)**

SIZE	6 KGF	10 KGF
1.1/4" (40 mm)		
1.1/2" (50 mm)		
2" (63 mm)		
2.1/2" (75 mm)		
3" (90 mm)		
4" (110 mm)		
5" (140 mm)		
6" (160 mm)		
7" (180 mm)		
8" (200 mm)		

NON ISI PVC Pipe per Kg.



**AGRICULTURE  
PIPES & FITTINGS**

Agriculture &  
Water Distribution System