



MACKWELLTM
PUMPS & CONTROLS

ISO 9001:2008 CERTIFIED COMPANY

STANDS FOR QUALITY

Email: info@mackwellpumps.com | Website: www.mackwellpumps.com

COMPANY PROFILE

AN EMERGING COMPANY IN THE FIELD OF PUMPING TECHNOLOGY AND SYSTEMS.

The company has its registered office in Ahmadabad (India), which is a highly prosperous city. The factory is well equipped with latest technology machinery and precision testing facilities to ensure better efficiency, improved quality of products and customer gratification. The company is run and handled by professionals and caters to the Indian market, as well as deals in export market.





OUR MISSION

ADHERE TO MAINTAINING AND PROVIDING HIGH QUALITY APPLICATION ENGINEERING SOLUTIONS.

We strictly adhere to maintaining and providing high quality Application Engineering solution in the area of pumping technology that yields a constant good industrial growth. We have carved a niche for ourselves in such a high competitive world and aim at creating a well-set influence on Industrial Sectors by providing services that yield valuable returns for money. Our motto is not just to deal the pumps, but we also understand the pumps by devoting our heart and soul to them.

OUR VISION

OUR CUSTOMER'S GROWTH IS
THE GROWTH OF THE COMPANY.

We place our customers next to God and believe they are our process partners. The customer's growth is the growth of the company. We aim at delivering customer satisfaction of the highest order and look forward to establishing long term relationships with them. After all, making a customer happy is a benefit for the company.

Achieving all this has been made possible by the endearing efforts of our professionals and our vision to provide nothing but the best!

MCP Series



End Suction Horizontal, Centrifugal, Coupled Pumps with Semi Open Impeller

Operating Data

Capacity	: Up to 40 m ³ /hr
Head	: Up to 48 mtr.
Discharge Size	: 25 mm to 50 mm
Temperature	: 250° C
Speed	: Up to 3500 rpm
Pressure	: Up to 4.8 kg/cm ²
M.O.C.	: C.I., C.S., SS-304 / 304L, SS316 / 316L, Bronze, Alloy-20, CD4MCU Hast alloy B & C, etc...

Application

- Organic/inorganic chemical intermediates industries.
- Pulp & paper, sugar, salt industries.
- Food, textiles, laminate, cement & steel industries.
- Pharmaceutical, dyes, kerosene, diesel, other solvents.
- ETP, STP & west water treatment plant.
- Eva- operator, scrubber application
- Filter press- feeding, slurry transfer.
- Widely used for public & civil engineering.

Features

- Back pull out non- clog design.
- Single stage semi open impeller
- Compact design using less floor space.
- Easy maintenance, replaceable parts.
- High efficiency
- Heavy duty shaft, sleeves & bearings
- Low NPSH
- Single & double mechanical seal.
- Grease/oil lubricants bearing

MCPD Series



Single Stage, End Suction Back Pull Out Type Centrifugal Process Pumps

Operating Data

Capacity	: Up to 2200 m ³ /hr
Head	: Up to 150 mtr.
Discharge Size	: 25 mm to 300 mm
Temperature	: 350° C
Speed	: Up to 3500 rpm
Pressure	: Up to 15 kg/cm ²
M.O.C.	: C.I., C.S., SS-304 / 304L, SS316 / 316L, Bronze, Alloy-20, CD4MCU Hast alloy B & C, etc...

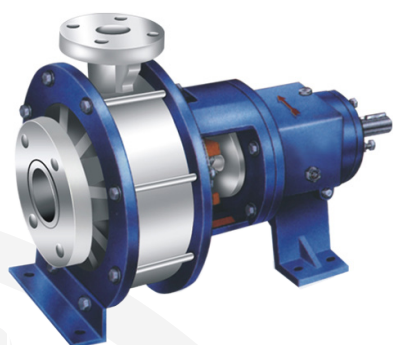
Application

- Hot & cold water circulation, cooling water circulation.
- Trip irrigation, water supply & building services
- Thermic fluid, jet dyeing, volatile fluids.
- Condensate handling, firefighting system, environmental.
- Engineering, marine, refrigeration & cooling towers installation etc.
- Chemicals, petrochemicals, refineries, sugar, paper, laminates industries
- Power station, rubber, organic & inorganic chemical, food, salt, textile industries,
- Corrosive & abrasive process chemical like acids, alkalis, solvents, slurries, hydrocarbons, crystallizing liquids, nitric, ammonia, phosphate, chemical effluents etc...

Features

- Back pull out design
- Conform to ISO 9001: dimension
- High efficiency hydraulic design
- Heavy duty shaft, sleeve & bearings
- Noise & maintenance free
- Steady head & capacity
- Single stage closed impeller
- Use for high capacity & length

MPPL Series



Corrosion Resistant Polypropylene Centrifugal Pumps

Operating Data

Capacity	: Up to 50 m ³ /hr
Head	: Up to 45 mtr.
Discharge Size	: 25 mm to 50 mm
Temperature	: 80° C
Speed	: Up to 3500 rpm
Pressure	: Up to 4.5 kg/cm ²
M.O.C.	: P.P., UHMWPE

Application

- Water treatment plant, effluent, treatment plant, electro plating, steel rolling mills.
- Excellent for transfer and loading- unloading like HCL, sulphuric acid/alkali, caustic liquid.
- Scrubbing of corrosive gases such as NH₃, CO₂, SO₃, SO₂, I₂, F₂, BR₂, Cl₂, etc...
- For handling liquid in various industries such as textiles, paper, cellulose, sugar, steel, food, etc....
- Ideal for circulation of chemical in metal finishing industry.
- Natural choice for pickling line & scrubber in steel plants. High capacity transfer pump, filter, press for dyes & chemicals, descaling, oil & other fuels.

Features

- Designed to suit extremely corrosive duties in the process & chemical industries.
- Suitable for continuous services
- Self- venting type casing
- Dynamically & hydraulically balanced impeller with aerodynamic profile vanes.
- Greases / oil lubricants bearings
- Pumps are fitted with either mechanical seal or gland packing depending on the service condition.
- Shaft & sleeves of different material depending on the compatibility of the liquid to be handled.

MPPH Series



Corrosion Resistant Polypropylene Centrifugal Pumps

Operating Data

Capacity	: Up to 300 m ³ /hr
Head	: Up to 65 mtr.
Discharge Size	: 50 mm to 100 mm
Temperature	: Up to 80° C
Speed	: Up to 3500 rpm
Pressure	: Up to 6.5 kg/cm ²
M.O.C.	: P.P., UHMWPE

Application

- Water treatment plant, effluent, treatment plant, electro plating, steel rolling mills.
- Excellent for transfer and loading- unloading like HCL, sulphuric acid/alkali, caustic liquid.
- Scrubbing of corrosive gases such as NH₃, CO₂, SO₃, SO₂, I₂, F₂, BR₂, Cl₂, etc...
- For handling liquid in various industries such as textiles, paper, cellulose, sugar, steel, food, etc....
- Ideal for circulation of chemical in metal finishing industry.
- Natural choice for pickling line & scrubber in steel plants.
- High capacity transfer pump, filter, press for dyes & chemicals, descaling, oil & other fuels.

Features

- Designed to suit extremely corrosive duties in the process & chemical industries.
- Suitable for continuous services
- Self-venting type casing
- Dynamically & hydraulically balanced impeller with aerodynamic profile vanes.
- Greases / oil lubricants bearings
- Pumps are fitted with either mechanical seal or gland packing depending on the service condition.
- Shaft & sleeves of different material depending on the compatibility of the liquid to be handled.

MVPP Series



Vertical Seal / Gland Less Pumps

Operating Data

Capacity	: Up to 50 m ³ /hr
Head	: Up to 45 mtr.
Discharge Size	: 25 mm to 50 mm
Temperature	: 80° C
Speed	: Up to 3500 rpm
Pressure	: Up to 4.5 kg/cm ²
M.O.C.	: P.P., UHMWPE

Application

- Electro plating, steel rolling mills.
- Water treatment plant, effluent treatment plant
- Excellent for transfer and loading- unloading like HCL, sulphuric acid/alkali, caustic liquid.
- Scrubbing of corrosive gases like NH_3 , CO_2 , SO_3 , SO_2 , I_2 , F_2 , BR_2 , Cl_2 , etc...
- For handling liquid in various industries like textiles, paper, cellulose, sugar, steel, food, etc....
- Ideal for circulation of chemical in metal finishing industry.
- Natural choice for pickling line & scrubber in steel plants.
- High capacity transfer pump, filter, press for dyes & chemicals, descaling, oil & other fuels.

Features

- No.1 choice for effluent treatment plants since there are no mechanical seals glands.
- Can run dry due to absence of shaft seals
- Few parts facilities maintenance

MGP Series



Multi-purpose Rotary Gear Pumps with Double Helical Gears

Operating Data

Capacity	: Up to 200 m ³ /hr
Head	: Up to 120 mtr.
Discharge Size	: 12 mm to 250 mm
Temperature	: 250° C
Speed	: Up to 1500 rpm
Pressure	: Up to 12 kg/cm ²
M.O.C.	: C.I., C.S., SS-304 / 304L, SS316 / 316L, Bronze, Alloy-20, CD4MCU Hast alloy B & C, etc...

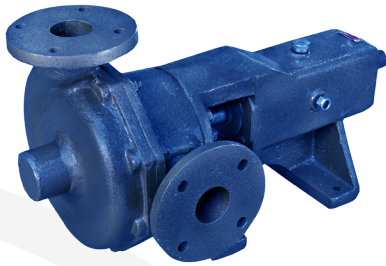
Application

- To deliver a variety of light & viscous liquids such as oil, fats, coal, tar, paint & molasses.
- Highly viscous or semi viscous liquids like ammonia, bleaches, coal tar, dyes, fruits, gasoline, glycerin, glue & greases.
- Paints, soap, solution etc...

Features

- Self-priming pumps with five meter suction lifts.
- Compact in size, low noise and high efficiency.
- Easy maintenance, longer life, economical.
- Inbuilt pressure relief valve.
- Bush bearing with a heavy shaft.
- Double helical gears to reduce axial thrust.
- Continuous duty.
- Handle multiple liquids.
- Unique design.

MSSP Series



Horizontal Single Stage Side Suction Pumps

Operating Data

Capacity	: Up to 200 m ³ /hr
Head	: Up to 100 mtr.
Discharge Size	: 40 mm to 100 mm
Temperature	: 130° C
Speed	: Up to 3500 rpm
Pressure	: Up to 10 kg/cm ²
M.O.C.	: C.I., C.S., SS-304 / 304L, SS316 / 316L, Bronze, Alloy-20, CD4MCU Hast alloy B & C, etc...

NOTE: only for positive/flooded suction head

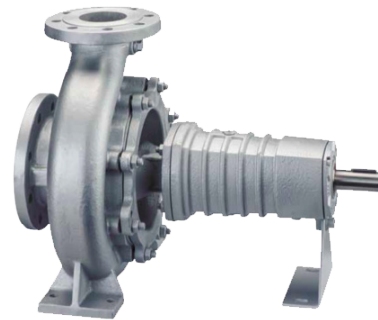
Application

- Filter press feeding
- Effluent treatment plant
- Dyes & intermediates.
- Steel rolling mills.
- All type of industrial application.
- Slurry transfer
- Ceramic, ETP & STP
- Paper and pulp, sugar, and food.
- Eva- operator, scrubber application.
- Zink & copper plant.

Features

- Single stage semi open impeller.
- Special design for filter press application.
- Reduce gland leakage.
- Heavy duty shaft, sleeve & bearings.
- Noise & maintenance free.
- High efficiency low power consumption
- Greases/oil lubricants bearings
- Only positive suction head.

MTFP Series



Centrifugal Air Cooled Hot Oil Pumps

Operating Data

Capacity	: Up to 180 m ³ /hr
Head	: Up to 80 mtr.
Discharge Size	: 32 mm to 80 mm
Temperature	: Up to 350° C
Speed	: Up to 3500 rpm
Pressure	: Up to 8 kg/cm ²
Cooling Method	: With Air
M.O.C.	: Grey cast iron, CS, Alloy case steel

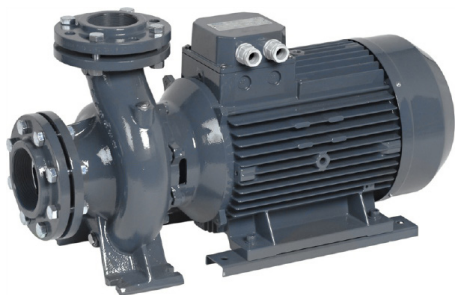
Application

- Petrochemical industries
- Oil industries
- Synthetic-fiber industries
- Textile, dying, printing industries
- Plastic & rubber industries
- Paper making industries
- Timber making industries
- Sugar industries
- Food industries
- Construction industries

Design Features

- Horizontal, single stage, single suction volute type, air-cooled centrifugal pumps with closed impeller pump shaft is supported by two heavy duty ball bearings, heat resistant mechanical seal, suction flange is on the front and axial, discharge flange is at top & radial.
- The below fields the pump are also proper in machinery manufacturing food processing medicine making and the circulation system for oil supplying of the hot oil boiler, the circulation system for the heating installation.

MMBP Series



Horizontal Centrifugal Monoblock Pumps

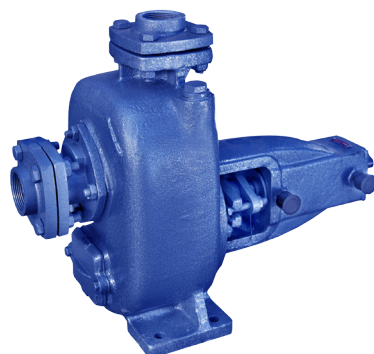
Operating Data

Capacity	: Up to 120 m ³ /hr
Head	: Up to 60 mtr.
Discharge Size	: 25 mm to 100 mm
Power Rating	: 1.0 hp to 20 hp - Three Phase 0.5 hp to 2 hp - Single Phase
Voltage Rating	: 380 V to 415 V - Three Phase 200 V to 240 V - Single Phase
Speed	: Up to 2880 rpm
M.O.C.	: C.I., C.S., SS-304, SS316, Bronze, etc...

Application

- Gardening and irrigation
- Agriculture, farms, civil, application
- Industries for clear water handling, cooling tower.
- Water supply for domestic use in apartments, hotels, swimming pools,
- Automobile service station, hospitals, clubs, hostels, power plants, firefighting.

MMP Series



Single Stage Horizontal, Non-clog Self-priming, Mud / Sewage Pumps

Operating Data

Capacity	: Up to 640 m ³ /hr
Head	: Up to 55 mtr.
Suc. Head	: Up to 5 mtr. (max)
Discharge Size	: 40 mm to 200 mm
Solid Size	: Up to 50 mm
Temperature	: Up to 110° C
Speed	: Up to 3500 rpm
Pressure	: Up to 5.5 kg/cm ²
M.O.C.	: C.I., C.S., SS-304 / 304L, SS316 / 316L, Bronze, Alloy-20, CD4MCU Hast alloy B & C, etc...

Application

- Dewatering, mud, marine, effluent, hotel, loading & transfer of oils, spirits, swimming, pools, gas oils, engine cooling.
- Vessel, industrial, pumping petroleum products, chemical.
- Civil construction-dewatering foundations,
- Filter press feeling, ETP, STP, waste water treatment plant.
- Public utilities- sewage pumping.
- Mobile machine- outting water for marine engines and shovels.
- Pier, excavations, pits, pot-holes etc...
- Gram panchayats, municipality public health department, large housing, colonies, chemical, pharmaceutical, food, cement, paper, sugar, salt, steel, and other.
- For liquid cargo from freighter, barges.

Features

- Non-clogging designed for high efficiency.
- Semi open type & hand finished for perfect smooth flow.
- Heavy duty built with self-priming features & internally cast with base from closed grained CI casting.
- Quick automatic self priming action
- Repairs possible without disturbing the pipe connection.
- Priming of suction pipe line not required.

MMP-M Series



Single Stage Horizontal, Non-clog Self-priming, Mud / Sewage Monoblock Pumps

Operating Data

Capacity	: Up to 75 m ³ /hr
Head	: Up to 48 mtr.
Suc. Head	: Up to 5 mtr.
Discharge Size	: 40 mm to 80 mm
Solid Size	: Up to 25 mm
Temperature	: Up to 110° C
Speed	: Up to 3500 rpm
Pressure	: Up to 4.8 kg/cm ²
M.O.C.	: C.I., C.S., SS-304 / 304L, SS316 / 316L, Bronze, Alloy-20, CD4MCU Hast alloy B & C, etc...
Voltage	: From 180 to 240 volts for 1 - Ø From 280 to 440 volts for 3 - Ø

Application

- Dewatering, mud, marine, effluent, hotel, loading & transfer of oils, spirits, swimming, pools, gas oils, engine cooling.
- Vessel, industrial, -pumping petroleum products, chemical.
- Civil construction-dewatering foundations,
- Filter press feeding, ETP, STP, waste water treatment plant.
- Public utilities- sewage pumping.
- Mobile machine- outting water for marine engines and shovels.
- Pier, excavations, pits, pot-holes etc...
- Gram panchayats, municipality public health department, large housing, colonies, chemical, pharmaceutical, food, cement, paper, sugar, salt, steel, and other.
- For liquid cargo from freighter, barges.

Features

- Non-clogging designed for high efficiency.
- Heavy duty built with self-priming features & internally cast with base from closed grained CI casting.
- Quick automatic self priming action
- Priming of suction pipe line not required.

MMSP Series



Single Stage Horizontal, Non-clog Self-priming, Mud / Sewage Pumps (Mechanical Seal Type)

Operating Data

Capacity	: Up to 75 m ³ /hr
Head	: Up to 58 mtr.
Suc. Head	: Up to 7 mtr.
Discharge Size	: 32 mm to 80 mm
Solid Size	: Up to 25 mm
Temperature	: Up to 110° C
Speed	: Up to 3500 rpm
Pressure	: Up to 5.8 kg/cm ²
M.O.C.	: C.I., C.S., SS-304 / 304L, SS316 / 316L, Bronze, Alloy-20, CD4MCU Hast alloy B & C, etc...
Mechanical	: STV (Carbon vs Ceramic / Tc with NBR Elastomer)
Seal Option	: CCV (Carbon vs Ceramic / Tc with Vitlon Elastomer) CCT (Carbon vs Ceramic / Tc with PTFE Elastomer)

Applications

- Dewatering, mud, marine, effluent, hotel, oils, spirits, swimming pools, gas oils.
- Vessels, industrial-pumping petroleum products, chemical
- Civil construction-dewatering foundations, public utilities.
- Filter press feeding, ETP-STP, waste water treatment plant.
- Mobile machinery-cooling water for marine engines.
- Pier, excavations, pits, pot-holes etc.
- Grampanchayats, municipalities' public health department, large housing colonies, chemical, Pharma Company.
- Food, cement, paper, sugar, salt, steel and other for liquid cargo from freighter, barges.

Features

- Non-clogging designed for high efficiency.
- Semi open type & hand finished for perfect smooth flow.
- Heavy duty built with self-priming features & internally cast with base from closed grained CI casting.
- Quick automatic self priming action
- Priming of suction pipe line not required.

MSBFP Series



Self-priming Multi-stage, High Pressure / High Speed Pumps

Operating Data

Capacity	: Up to 22 m ³ /hr
Head	: Up to 288 mtr.
Discharge Size	: 25 mm to 50 mm
Temperature	: Up to 105° C
Suction:	: Lift up to 7 mtr.
Speed	: Up to 1500 rpm
Pressure	: Up to 28.8 kg/cm ²
M.O.C.	: C.I., Bronze, Steel, etc...

Application

- Transfer of liquid containing vapor air or gas.
- Boiler feed, marine, refrigeration, fuel oil.
- Power plant
- High pressure testing
- Hilly area village
- Sprinkles irrigation
- Industrial clear water
- Condensate water transfer.
- Water supply to multi storied buildings

MP & P Series



Single Stage, End Suction Back Pulls Out Type Centrifugal Process Pumps Pulp & Paper Mill Industries Pumps

Operating Data

Capacity	: Up to 1200 m ³ /hr
Head	: Up to 55 mtr.
Discharge Size	: 25 mm to 300 mm
Temperature	: Up to 250° C
Speed	: Up to 1500 rpm
Pressure	: Up to 5.5 kg/cm ²
Impellers	: Open & Semi open type
Consistency	: Up to 7%
M.O.C.	: C.I., C.S., SS-304 / 304L, SS316 / 316L, Bronze, Alloy-20, CD4MCU Hast alloy B & C, etc...

Application

- Refiners pump
- Fan pump
- Centri-cleaner pump
- Back water pump
- Separator pump
- Couch pit pump
- Turbo feel pump
- Chest pump etc.

MDP Series



Air Operated Double Diaphragm Pump

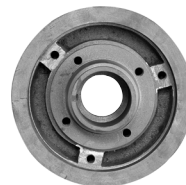
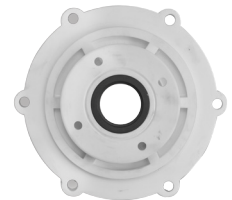
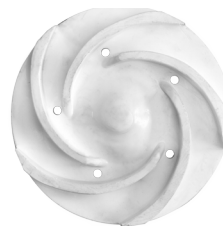
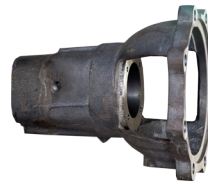
Operating Data

Capacity	: Up to 55 m ³ /hr
Head	: Up to 70 mtr.
Pressure	: Up to 7 kg/cm ²
Temperature	: Max. 120° C
Discharge Size	: 12 mm to 80 mm
Air Inlet Size	: 1/4" to 1/2"
Air Exhaust Size	: 1/2" BSP
Solid Size	: Max. 12 mm
M.O.C.	: SS316, SS304, PP, PVDVE, Aluminum, etc...
Suction Lift	: Rubber Diaphragm: Dry: 4.5 mtr. Wet: 7.5 mtr. Teflon Diaphragm: Dry: 3 mtr. Wet: 6 mtr.

Application

- Solvents
- Acids
- Caustics
- High Viscous Liquids
- Abrasive Media
- Hazardous & Flammable Liquids
- Barrel loading – unloading
- Filter press & transfer
- Slurry transfer

Pump Spare Parts





ISO 9001:2008 CERTIFIED COMPANY



Address:

11, Karm Industrial Park, Nr. Krishna Industrial Park, Kathwada Singarva Road,
G.I.D.C., Kathwada, Ahmedabad - 382430

Branch Office:

Plot No. 12, Yogi Estate, Nr. Karmatur Chowkadi Power House,
GIDC, Ankleshwar - 393002, Gujarat, India.

Contact Us: 079 65186 186

Email: info@mackwellpumps.com | Website: www.mackwellpumps.com

Designed by:  **CREINNO**

www.wearecreinno.com | wearecreinno@gmail.com