

STANDS FOR **QUALITY**

**MSP SERIES**

**SELF PRIMING  
& BARREL PUMP**



**MACKWELL**

PUMPS & CONTROLS

JAS-ANZ

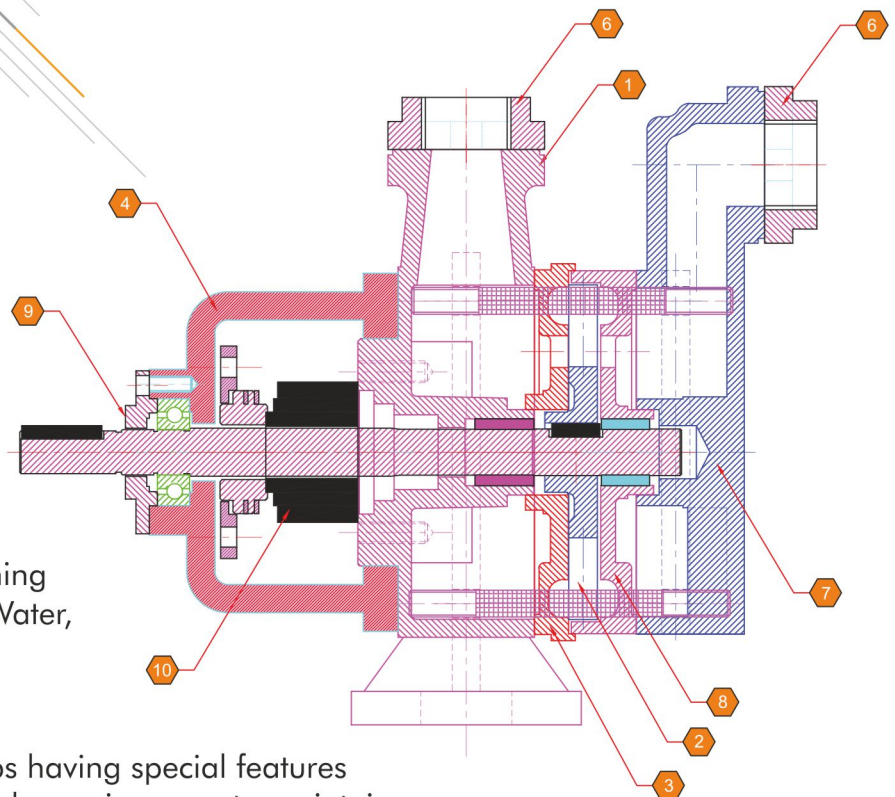


An ISO 9001:2015 Registered

[www.mackwellpump.com](http://www.mackwellpump.com)

## DESCRIPTION

- 01 VOLUTE
- 02 IMPELLER
- 03 PACKING PLATE
- 04 BEARING HOUSING
- 05 SHAFT
- 06 THREADED FLANGE
- 07 OUTSIDE HOUSING
- 08 DISTANCE PIECE
- 09 HOUSING COVER
- 10 SEAL & SEAL PLATE ASSLY.



Mackwell pumps offer you self-priming pumps to handle clear liquids like Water, Acids, Kerosene, Diesel, Solvent, etc...without foot valve.

Mackwell pumps self-priming pumps having special features having simple and compact design, low noise, easy to maintain, reliable and low cost.

## FEATURES

- A jam free pump with moving parts made of special metal capable of sucking and delivery
- Clear liquids against the operating pressure
- No need of foot valve
- Specialized die cast material

## APPLICATION

- Loading and unloading of small & big drums
- Barrels
- Small tankers
- Large use rolling mills for picking and solvent plant
- Pharmaceutical
- Laminates

Pump Casing	WCB	S.S. 316
Impeller	WCB	S.S. 316
Pump Shaft	S.S. 410	S.S. 316
Bearing Casing	Hard Iron	Hard Iron
Mechanical Seal Cover	WCB	S.S. 316

Other materials upon request  
Mechanical Seal Material : GFT Ceramic





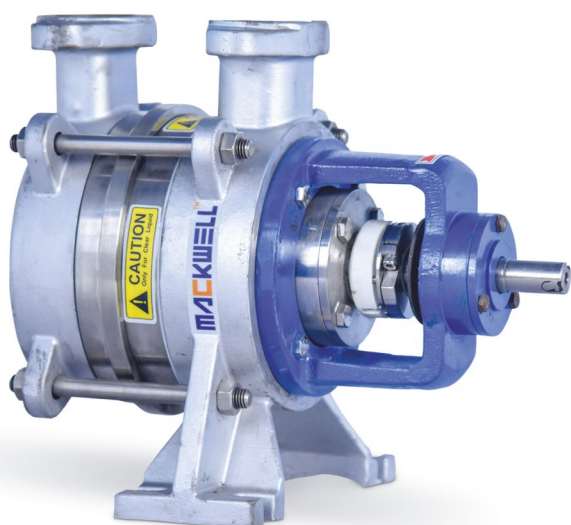
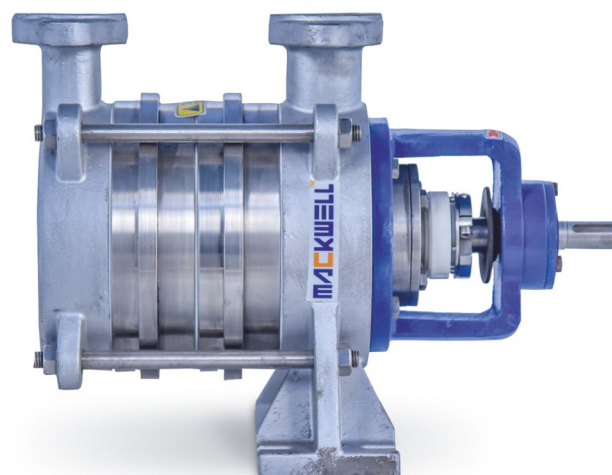


### MSP 2.1

MAX. POWER	1 HP
MAX. FLOW RATE	50 LMP
MAX. HEAD	UP TO 15 MTR
SPEED	1440 RPM
DISCHARGE	25 MM
SUCTION	25 MM
TEMPERATURE	75° C

### MSP 2.2

MAX. POWER	2 HP
MAX. FLOW RATE	55 LMP
MAX. HEAD	Up to 35 mtr
SPEED	1440 rpm
DISCHARGE	25 mm
SUCTION	25 mm
TEMPERATURE	75° C :



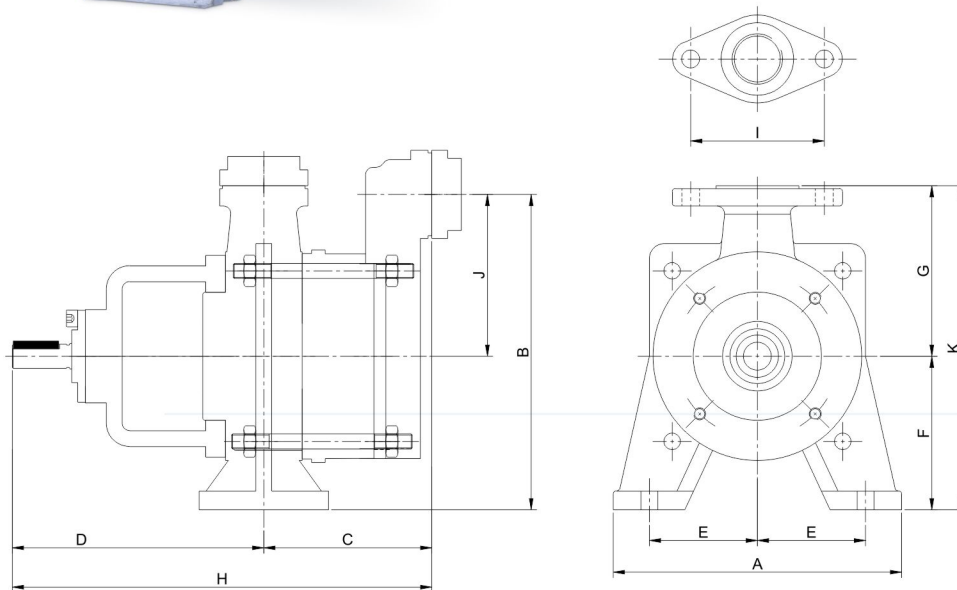
### MSP 3.1

MAX. POWER	3 HP
MAX. FLOW RATE	130 LMP
MAX. HEAD	Up to 20 mtr
SPEED	1440 rpm
DISCHARGE	40 mm
SUCTION	40 mm
TEMPERATURE	75° C



## MSP 3.2

MAX. POWER	5 HP
MAX. FLOW RATE	180 LMP
MAX. HEAD	Up to 50 mtr
SPEED	1440 rpm
DISCHARGE	40 mm
SUCTION	40 mm
TEMPERATURE	75° C



PUMP SIZE	WEIGHT	A	B	C	D	E	F	G	H	I	J	K
MSP-2.1	13.50 KG	191.5	210.0	112.0	168.0	72.5	102.0	113.0	280.0	88.0	107.5	215.0
MSP-2.2	15.70 KG	191.5	210.0	155.0	168.0	72.5	102.0	113.0	423.0	88.0	107.5	215.0
MSP-3.1	24.60 KG	230.0	283.5	118.0	198.5	90.0	141.5	145.5	316.5	98.0	142.0	287.0
MSP-3.2	31.50 KG	230.0	283.5	170.0	198.5	90.0	141.5	145.5	368.5	98.0	142.0	287.0



**MACKWELL**  
PUMPS & CONTROLS

11, Karm Industrial Park, Nr. Krishna Industrial Park,  
Kathwada Singarva Road, G.I.D.C., Kathwada,  
Ahmedabad - 382430. Phone: 079 65186 186  
Email: [info@mackwellpumps.com](mailto:info@mackwellpumps.com)  
Website: [www.mackwellpumps.com](http://www.mackwellpumps.com)

LOCAL DISTRIBUTOR / DEALER