



Bonetech



NEXPINE™

Next Level Spine

BMPL.CAT14.02



www.bonetechmedisys.com

Thoraco Lumber Pedicle Screw System

▸ EPHORATE™	4
▸ MAGNIFICA™	6
▸ CREER™	8
▸ MAGNIFICA™ FNC	10

MIS System

▸ PLUS™	13
▸ PLUS II™	14

ENLACE™ Spine Connecting System

15-20

Posterior Cervical System

▸ NOVA PLUS™	22
▸ NOVA™	23-24
▸ Occifix™	25

Anterior Cervical System

▸ Symplex I™	28
▸ Symplex II™	29

Anterior Cervical Cages

▸ Duo	31
▸ D	31
▸ AUTOBLOCK™	32
▸ C-Xpan™	32
▸ AVIATION™	33-34
▸ PRIME™ Expandable Jack Cage with Plate	35-36
▸ DENSIN™ Anterior Cervical Lag Screw	37

Lumber Cages

▸ TLIF (Banana Cage)	39
▸ PLIF (Bullet Cage)	40
▸ Manglior™ TLIF Cage	41
▸ Manglior™ PLIF Cage	42-43
▸ L-Xpan™ Expandable Cage	44
▸ Manglior™ OLIF Cage	45
▸ RAPEL™ Adjustable Lumber Expandable Cage	46
▸ MESH CAGE	47
▸ PRIME™ Expandable Jack Cage	48-49

Thoraco Lumber Pedicle Screw System



Description

The Ephorate™ pedicle screw system consists of a variety of sizes of screws, as well as implant components from other Nexpine™ spinal systems which can be rigidly locked into a variety of configurations.

Intended Use

Ephorate™ pedicle screw system is intended to help provide immobilization and stabilization of spinal segments as an adjunct to fusion of the thoracic, lumbar, or sacral spine.

Indication

Degenerative Disc Disease (DDD - defined as back pain of discogenic origin with degeneration of the disc), Spondylolisthesis, Trauma (i.e. fracture or dislocation), Spinal Stenosis, Curvatures (i.e. scoliosis, kyphosis, or lordosis), Tumor, Pseudarthrosis, and/or failed previous fusion.

Contraindication

- Active infectious process or significant risk of infection.
- Signs of local inflammation.
- Fever or leucocytosis.
- Morbid obesity.
- Pregnancy.
- Mental illness.
- Grossly distorted anatomy caused by congenital abnormalities.

Features & Benefits

Optimized Visualization and Access

Implants have a low profile and reducers are designed with minimal bulk for improved visualization.

Locking Mechanism

Optimized buttress thread on the set screw minimizes the potential for head splay and cross threading.

Self-tapping screw tip

Aggressive cutting flute is designed to provide surgeons the option of eliminating the tapping step of the surgical procedure.



Ordering Information

EPHORATE Ø4.5 MM

MONOAXIAL PEDICLE SCREW

Code	Length (mm)
BS101.45.25	25mm
BS101.45.30	30mm
BS101.45.35	35mm
BS101.45.40	40mm
BS101.45.45	45mm

EPHORATE Ø5.5 MM

MONOAXIAL PEDICLE SCREW

Code	Length (mm)
BS102.55.30	30mm
BS102.55.35	35mm
BS102.55.40	40mm
BS102.55.45	45mm
BS102.55.50	50mm

EPHORATE Ø6.5 MM

MONOAXIAL PEDICLE SCREW

Code	Length (mm)
BS103.65.30	30mm
BS103.65.35	35mm
BS103.65.40	40mm
BS103.65.45	45mm
BS103.65.50	50mm



EPHORATE Ø4.5 MM

POLYAXIAL PEDICLE SCREW

Code	Length (mm)
BS104.45.25	25mm
BS104.45.30	30mm
BS104.45.35	35mm
BS104.45.40	40mm
BS104.45.45	45mm

EPHORATE Ø6.5 MM

POLYAXIAL PEDICLE SCREW

Code	Length (mm)
BS106.65.30	30mm
BS106.65.35	35mm
BS106.65.40	40mm
BS106.65.45	45mm
BS106.65.50	50mm
BS106.65.55	55mm
BS106.65.60	60mm
BS106.65.65	65mm
BS106.65.70	70mm
BS106.65.75	75mm
BS106.65.80	80mm
BS106.65.85	85mm
BS106.65.90	90mm

EPHORATE Ø7.0 MM

POLYAXIAL PEDICLE SCREW

Code	Length (mm)
BS134.70.30	30mm
BS134.70.35	35mm
BS134.70.40	40mm
BS134.70.45	45mm
BS134.70.50	50mm
BS134.70.55	55mm
BS134.70.60	60mm
BS134.70.65	65mm
BS134.70.70	70mm
BS134.70.75	75mm
BS134.70.80	80mm
BS134.70.85	85mm
BS134.70.90	90mm



EPHORATE Ø5.0 MM

POLYAXIAL PEDICLE SCREW

Code	Length (mm)
BS105.55.30	30mm
BS105.55.35	35mm
BS105.55.40	40mm
BS105.55.45	45mm
BS105.55.50	50mm

EPHORATE Ø5.5 MM

MONOAXIAL REDUCTION PEDICLE SCREW

Code	Length (mm)
BS107.55.30	30mm
BS107.55.35	35mm
BS107.55.40	40mm
BS107.55.45	45mm
BS107.55.50	50mm

EPHORATE Ø6.5 MM

MONOAXIAL REDUCTION PEDICLE SCREW

Code	Length (mm)
BS108.65.30	30mm
BS108.65.35	35mm
BS108.65.40	40mm
BS108.65.45	45mm
BS108.65.50	50mm

EPHORATE Ø5.5 MM

POLYAXIAL REDUCTION PEDICLE SCREW

Code	Length (mm)
BS109.55.30	30mm
BS109.55.35	35mm
BS109.55.40	40mm
BS109.55.45	45mm
BS109.55.50	50mm

EPHORATE Ø6.5 MM

POLYAXIAL REDUCTION PEDICLE SCREW

Code	Length (mm)
BS110.65.30	30mm
BS110.65.35	35mm
BS110.65.40	40mm
BS110.65.45	45mm
BS110.65.50	50mm

EPHORATE Ø4.5 MM

MONOAXIAL REDUCTION PEDICLE SCREW

Code	Length (mm)
BS124.45.30	30mm
BS124.45.35	35mm
BS124.45.40	40mm
BS124.45.45	45mm
BS124.45.50	50mm

EPHORATE Ø7.0 MM

POLYAXIAL REDUCTION PEDICLE SCREW

Code	Length (mm)
BS125.70.30	30mm
BS125.70.35	35mm
BS125.70.40	40mm
BS125.70.45	45mm
BS125.70.50	50mm
BS125.70.55	55mm
BS125.70.60	60mm
BS125.70.65	65mm
BS125.70.70	70mm
BS125.70.75	75mm
BS125.70.80	80mm
BS125.70.85	85mm
BS125.70.90	90mm



Description

The Magnifica™ pedicle screw system consists of a variety of sizes of screws, as well as implant components from other Nexpine™ spinal systems which can be used to treat scoliosis, a condition in which the spine develops one or more abnormal, side-to-side curves that in turn may affect the body's overall balance and alignment, as well as possibly lead to other physical and health problems.

Intended Use

The device is meant to be used in conjunction with a fusion to provide greater stabilization of the spine in patients with more acute mid to lower back problems.

Indication

To treat patients with degenerative disc disease, spinal stenosis, fracture, dislocation, failed previous fusions, tumors and, uniquely, adolescent idiopathic scoliosis.

Features & Benefits

Dual Lead Thread form

The Magnifica™ can get substantial grip in osteoporotic bones.
Color-coded by bone screw diameter.

Optimized Visualization and Access

Implants have a low profile and reducers are designed with minimal bulk for improved visualization.

Locking Mechanism

Optimized buttress thread on the set screw minimizes the potential for head splay and cross threading.

Self-tapping screw tip

Aggressive cutting flute is designed to provide surgeons the option of eliminating the tapping step of the surgical procedure.



Ordering Information

MAGNIFICA Ø4.5 MM

MONOAXIAL PEDICLE SCREW

Code	Length (mm)
BS128.45.25	25mm
BS128.45.30	30mm
BS128.45.35	35mm
BS128.45.40	40mm
BS128.45.45	45mm

MAGNIFICA Ø5.5 MM

MONOAXIAL PEDICLE SCREW

Code	Length (mm)
BS129.55.30	30mm
BS129.55.35	35mm
BS129.55.40	40mm
BS129.55.45	45mm
BS129.55.50	50mm

MAGNIFICA Ø6.5 MM

MONOAXIAL PEDICLE SCREW

Code	Length (mm)
BS130.65.30	30mm
BS130.65.35	35mm
BS130.65.40	40mm
BS130.65.45	45mm
BS130.65.50	50mm



MAGNIFICA Ø4.5 MM

POLYAXIAL PEDICLE SCREW

Code	Length (mm)
BS131.45.25	25mm
BS131.45.30	30mm
BS131.45.35	35mm
BS131.45.40	40mm
BS131.45.45	45mm

MAGNIFICA Ø5.0 MM

POLYAXIAL PEDICLE SCREW

Code	Length (mm)
BS132.55.30	30mm
BS132.55.35	35mm
BS132.55.40	40mm
BS132.55.45	45mm
BS132.55.50	50mm
BS132.55.55	55mm
BS132.55.60	60mm

MAGNIFICA Ø6.5 MM

POLYAXIAL PEDICLE SCREW

Code	Length (mm)
BS133.65.30	30mm
BS133.65.35	35mm
BS133.65.40	40mm
BS133.65.45	45mm
BS133.65.50	50mm

MAGNIFICA Ø7.0 MM

POLYAXIAL PEDICLE SCREW

Code	Length (mm)
BS137.70.30	30mm
BS137.70.35	35mm
BS137.70.40	40mm
BS137.70.45	45mm
BS137.70.50	50mm
BS137.70.55	55mm
BS137.70.60	60mm
BS137.70.65	65mm
BS137.70.70	70mm
BS137.70.75	75mm
BS137.70.80	80mm
BS137.70.85	85mm
BS137.70.90	90mm



MAGNIFICA Ø5.5 MM

MONOAXIAL REDUCTION PEDICLE SCREW

Code	Length (mm)
BS141.55.30	30mm
BS141.55.35	35mm
BS141.55.40	40mm
BS141.55.45	45mm
BS141.55.50	50mm

MAGNIFICA Ø6.5 MM

MONOAXIAL REDUCTION PEDICLE SCREW

Code	Length (mm)
BS141.65.30	30mm
BS141.65.35	35mm
BS141.65.40	40mm
BS141.65.45	45mm
BS141.65.50	50mm

MAGNIFICA Ø4.5 MM

POLYAXIAL REDUCTION PEDICLE SCREW

Code	Length (mm)
BS142.45.25	25mm
BS142.45.30	30mm
BS142.45.35	35mm
BS142.45.40	40mm
BS142.45.45	45mm

MAGNIFICA Ø5.5 MM

POLYAXIAL REDUCTION PEDICLE SCREW

Code	Length (mm)
BS142.55.30	30mm
BS142.55.35	35mm
BS142.55.40	40mm
BS142.55.45	45mm
BS142.55.50	50mm

MAGNIFICA Ø6.5 MM

POLYAXIAL REDUCTION PEDICLE SCREW

Code	Length (mm)
BS142.65.30	30mm
BS142.65.35	35mm
BS142.65.40	40mm
BS142.65.45	45mm
BS142.65.50	50mm



Magnifica Spine Set Screw

CODE : BS135



Description

The Creer™ pedicle screw system Consists of Pedicle screws with a thin hydroxyapatite coating for improving fixation at the bone-implant interface in the osteoporotic spine.

Intended Use

The device is meant to be used in conjunction with a fusion to provide greater stabilization of the spine in patients with more acute mid to lower back problems.

Indication

To treat patients with degenerative disc disease, spinal stenosis, fracture, dislocation, failed previous fusions, tumors and, uniquely, adolescent idiopathic scoliosis.



Features & Benefits

H. A. Coating

Eliminates the problem of screw loosening irrespective of gender, age, number of level stabilised or whether there was previous lumbar surgery. Color-coded by bone screw diameter.

Optimized Visualization and Access

Implants have a low profile and reducers are designed with minimal bulk for improved visualization.

Locking Mechanism

Optimized buttress thread on the set screw minimizes the potential for head splay and cross threading.

Ordering Information

CREER Ø4.5 MM

MONOAXIAL PEDICLE SCREW

Code	Length (mm)
BS426.45.25	25mm
BS426.45.30	30mm
BS426.45.35	35mm
BS426.45.40	40mm
BS426.45.45	45mm

CREER Ø5.5 MM

MONOAXIAL PEDICLE SCREW

Code	Length (mm)
BS427.55.30	30mm
BS427.55.35	35mm
BS427.55.40	40mm
BS427.55.45	45mm
BS427.55.50	50mm

CREER Ø6.5 MM

MONOAXIAL PEDICLE SCREW

Code	Length (mm)
BS428.65.30	30mm
BS428.65.35	35mm
BS428.65.40	40mm
BS428.65.45	45mm
BS428.65.50	50mm



CREER Ø4.5 MM

POLYAXIAL PEDICLE SCREW

Code	Length (mm)
BS429.45.25	25mm
BS429.45.30	30mm
BS429.45.35	35mm
BS429.45.40	40mm
BS429.45.45	45mm

CREER Ø5.0 MM

POLYAXIAL PEDICLE SCREW

Code	Length (mm)
BS430.55.30	30mm
BS430.55.35	35mm
BS430.55.40	40mm
BS430.55.45	45mm
BS430.55.50	50mm

CREER Ø6.5 MM

POLYAXIAL PEDICLE SCREW

Code	Length (mm)
BS431.65.30	30mm
BS431.65.35	35mm
BS431.65.40	40mm
BS431.65.45	45mm
BS431.65.50	50mm
BS431.65.55	55mm
BS431.65.60	60mm
BS431.65.65	65mm
BS431.65.70	70mm
BS431.65.75	75mm
BS431.65.80	80mm
BS431.65.85	85mm
BS431.65.90	90mm



CREER Ø5.5 MM

POLYAXIAL REDUCTION PEDICLE SCREW

Code	Length (mm)
BS436.55.30	30mm
BS436.55.35	35mm
BS436.55.40	40mm
BS436.55.45	45mm
BS436.55.50	50mm

CREER Ø6.5 MM

POLYAXIAL REDUCTION PEDICLE SCREW

Code	Length (mm)
BS437.65.30	30mm
BS437.65.35	35mm
BS437.65.40	40mm
BS437.65.45	45mm
BS437.65.50	50mm



Description

The Magnifica™ FNC pedicle screw permits augmented fixation via injection of bone cement into the vertebral body upon placement of the screw, potentially mitigating the difficulties in achieving adequate stabilization in these patients.

Intended Use

The FNC is meant to be used in conjunction with a fusion to provide greater stabilization of the spine in patients with more acute osteoporotic bones.

Indication

To treat patients with degenerative disc disease, spinal stenosis, fracture, dislocation, failed previous fusions, tumors and, uniquely, adolescent idiopathic scoliosis.

Features & Benefits

It helps to inject the bone cement into the vertebral body and eliminates the problem of screw loosening irrespective of gender, age, number of level stabilised or whether there was previous lumbar surgery.
Color-coded by bone screw diameter.

Optimized Visualization and Access

Implants have a low profile and reducers are designed with minimal bulk for improved visualization.

Locking Mechanism

Optimized buttress thread on the set screw minimizes the potential for head splay and cross threading.



Ordering Information

MAGNIFICA FNC Ø5.5 MM

MONOAXIAL PEDICLE SCREW

Code	Length (mm)
BS148.55.30	30mm
BS148.55.35	35mm
BS148.55.40	40mm
BS148.55.45	45mm
BS148.55.50	50mm

MAGNIFICA FNC Ø6.5 MM

MONOAXIAL PEDICLE SCREW

Code	Length (mm)
BS148.65.30	30mm
BS148.65.35	35mm
BS148.65.40	40mm
BS148.65.45	45mm
BS148.65.50	50mm

MAGNIFICA FNC Ø5.5 MM

POLYAXIAL REDUCTION

PEDICLE SCREW

Code	Length (mm)
BS154.55.30	30mm
BS154.55.35	35mm
BS154.55.40	40mm
BS154.55.45	45mm
BS154.55.50	50mm

MAGNIFICA FNC Ø6.5 MM

POLYAXIAL REDUCTION

PEDICLE SCREW

Code	Length (mm)
BS154.65.30	30mm
BS154.65.35	35mm
BS154.65.40	40mm
BS154.65.45	45mm
BS154.65.50	50mm



MAGNIFICA FNC CEMENT INSERTION DEVICE

Code
BS149



Description

Reliable & Comprehensive Stabilization Solution for Spinal
 Quad Lead Thread doubles the Cancellous & Cortical bone Purchase
 Self Tapping screw - Simple and Fast injection

Full 45° Multi Axial Range of motion



Ordering Information

LOMO Ø4.5 MM

MONOAXIAL PEDICLE SCREW

Code	Length (mm)
BS114.45.25	25mm
BS114.45.30	30mm
BS114.45.35	35mm
BS114.45.40	40mm
BS114.45.45	45mm

LOMO Ø5.5 MM

MONOAXIAL PEDICLE SCREW

Code	Length (mm)
BS115.55.30	30mm
BS115.55.35	35mm
BS115.55.40	40mm
BS115.55.45	45mm
BS115.55.50	50mm

LOMO Ø6.5 MM

MONOAXIAL PEDICLE SCREW

Code	Length (mm)
BS116.65.30	30mm
BS116.65.35	35mm
BS116.65.40	40mm
BS116.65.45	45mm
BS116.65.50	50mm

LOMO Ø4.5 MM

POLYAXIAL PEDICLE SCREW

Code	Length (mm)
BS117.45.25	25mm
BS117.45.30	30mm
BS117.45.35	35mm
BS117.45.40	40mm
BS117.45.45	45mm

LOMO Ø5.0 MM

POLYAXIAL PEDICLE SCREW

Code	Length (mm)
BS118.55.30	30mm
BS118.55.35	35mm
BS118.55.40	40mm
BS118.55.45	45mm
BS118.55.50	50mm

LOMO Ø6.5 MM

POLYAXIAL PEDICLE SCREW

Code	Length (mm)
BS119.65.30	30mm
BS119.65.35	35mm
BS119.65.40	40mm
BS119.65.45	45mm
BS119.65.50	50mm



LOMO Ø5.5 MM

POLYAXIAL REDUCTION PEDICLE SCREW

Code	Length (mm)
BS120.55.30	30mm
BS120.55.35	35mm
BS120.55.40	40mm
BS120.55.45	45mm
BS120.55.50	50mm

LOMO Ø6.5 MM

POLYAXIAL REDUCTION PEDICLE SCREW

Code	Length (mm)
BS121.65.30	30mm
BS121.65.35	35mm
BS121.65.40	40mm
BS121.65.45	45mm
BS121.65.50	50mm

MIS System



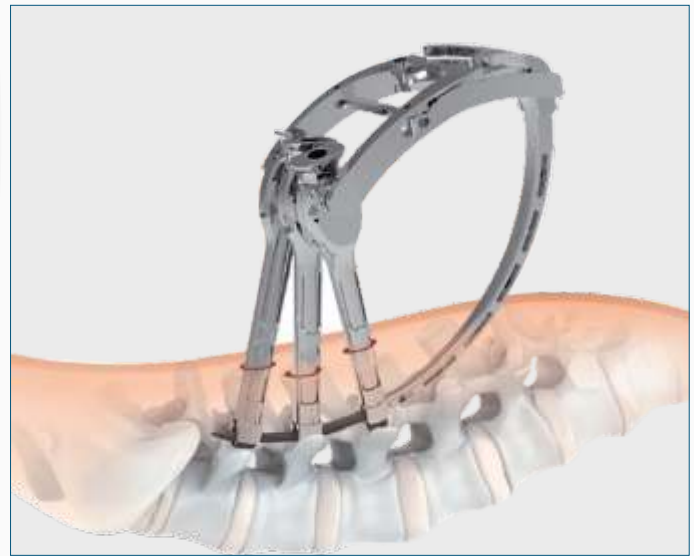
Description

PLUS™ delivers rods and screws percutaneously into the backs of patients suffering from degenerative disc disease, herniated or ruptured discs, misaligned vertebrae or spinal fractures. A surgical instrumentation system that offers a minimally invasive method of placing implants that provide stabilization during spinal fusion surgery. PLUS™ Spinal System allows surgeons to deliver and apply screw and rod implants to the posterior aspect of the spine without the major muscle and tissue disruption encountered with traditional spinal fusion surgeries. This minimally invasive technique potentially allows significant patient benefits.



Features

- Rod Insertion System provides surgeons with next-generation technology that will revolutionize the future of spine care.



MIS Screw Rod

Curved

Code : BS442.L

Length(L) : 40mm to 100mm (5 mm Variation)
110mm & 120mm

Straight

Code : BS444.L

Length(L) : 40mm to 200mm (10 mm Variation)

MIS Break-off Plug

Code : BS452.01



PLUS™ MIS Spine Pedicle Screw

Ø 5.5 MM MIS Pedicle Screw

Ø 6.0 MM MIS Pedicle Screw

Ø 6.5 MM MIS Pedicle Screw

Ø 7.0 MM MIS Pedicle Screw

Code	Length (mm)
BS432.55.25	25mm
BS432.55.30	30mm
BS432.55.35	35mm
BS432.55.40	40mm
BS432.55.45	45mm

Code	Length (mm)
BS433.60.30	30mm
BS433.60.35	35mm
BS433.60.40	40mm
BS433.60.45	45mm
BS433.60.50	50mm

Code	Length (mm)
BS434.65.30	30mm
BS434.65.35	35mm
BS434.65.40	40mm
BS434.65.45	45mm
BS434.65.50	50mm

Code	Length (mm)
BS435.70.30	30mm
BS435.70.35	35mm
BS435.70.40	40mm
BS435.70.45	45mm
BS435.70.50	50mm

Features

- Tail tab stabilizes long arms during insertion & designed breakable before rod placement
- 80mm long arm applicable for all body types integrated fabrication ensures safe implantation
- Gaps at long arm tail complied with the reduction clamp facilitates rod compression and spondylolisthesis reduction
- Unique reversed thread technology & star recess minimize worn thread & shoving force at screw tail
- Low profile, smaller screw tail basal area & duo thread enhance screw intensity, pullout strength and insertion speed



Indication

- Applicable for single and multi-segment fixation
- Minimally invasive & posterior spinal stability
- Straight and curved connection rods available
- Simplified and accurate rod placement
- Long and designed for easier operation

MIS Screw Rod

5.5mm Curved

Code : BS453

Length(L) : 40mm to 100mm (5 mm Variation)
110mm & 120mm

Ø 5.5 Straight

Code : BS454

Length(L) : 40mm to 260mm (10 mm Variation)



POLYAXIAL

Ordering Information

PLUS II Long Arm Polyaxial Pedicle Screw

Ø 5.5 MM PLUS II Long Arm Polyaxial Pedicle Screw

Code	Length (mm)
BS140.55.35	35mm
BS140.55.40	40mm
BS140.55.45	45mm
BS140.55.50	50mm
BS140.55.55	55mm

Ø 6.5 MM PLUS II Long Arm Polyaxial Pedicle Screw

Code	Length (mm)
BS140.65.35	35mm
BS140.65.40	40mm
BS140.65.45	45mm
BS140.65.50	50mm
BS140.65.55	55mm

Ø 7.0 MM PLUS II Long Arm Polyaxial Pedicle Screw

Code	Length (mm)
BS140.70.35	35mm
BS140.70.40	40mm
BS140.70.45	45mm
BS140.70.50	50mm
BS140.70.55	55mm
BS140.70.65	65mm
BS140.70.70	70mm
BS140.70.75	75mm
BS140.70.80	80mm

ENLACE Spine Connecting System





Multispan Crosslink Connector

Code	Length
BS446.XS	30-34mm
BS446.S	34-42mm
BS446.M	40-53mm
BS446.L	50-70mm

Compatible with Ø5.5 mm ROD & Ephorate™, Magnifica™, Magnifica™ FNC, CREER™

NOVA Occifix Screw Connector

CODE : BS214.01

SIZE : 1 HOLE

Compatible with NOVA™ System



NOVA Occifix Screw Connector

CODE : BS214.02

SIZE : 2 HOLE

Compatible with NOVA™ System

NOVA Occifix Screw Connector Open

CODE : BS215.01

SIZE : 1 HOLE

Compatible with NOVA™ System



NOVA Occifix Screw Connector Open

CODE : BS215.02

SIZE : 2 HOLE

Compatible with NOVA™ System

Spine Connecting System

Laminar Hook 5.5 mm (Lumber)

Laminar Hook 3.5 mm (Cervical)

CODE : BS136.55

CODE : BS136.35

Compatible with NOVA™ System



5.5 mm Connecting Rod (One Side Hex)



Code	Length (mm)
BS111.55.50	50mm
BS111.55.60	60mm
BS111.55.70	70mm
BS111.55.80	80mm
BS111.55.90	90mm
BS111.55.100	100mm
BS111.55.110	110mm
BS111.55.120	120mm
BS111.55.130	130mm
BS111.55.140	140mm
BS111.55.150	150mm
BS111.55.200	200mm
BS111.55.250	250mm
BS111.55.300	300mm
BS111.55.400	400mm

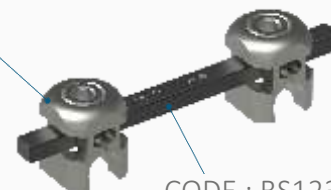
Transverse Connecting (Square)

CODE : BS122

Transverse Connecting Rod

Code	Length (mm)
BS123.50	50mm
BS123.60	60mm
BS123.70	70mm
BS123.80	80mm
BS123.90	90mm
BS123.100	100mm
BS123.110	110mm
BS123.120	120mm

CODE : BS122



CODE : BS123

Compatible with NOVA™ System, NOVA PLUS

Spine Connecting System

NOVA™

Posterior Cervical Connecting Rod

CODE : BS205.35.300

SIZE : Ø3.5 X 300 MM

Compatible with NOVA™ System



NOVA™

Pre Bend Connecting Rod

CODE : BS210

Compatible with NOVA™ System



NOVA™

Tapered Rod

CODE : BS211.300

SIZE : 3.5MM-5.5MM X300MM

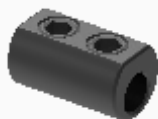
Compatible with NOVA™ & Ephorate™, Magnifica™, Magnifica™ FNC, CREER™



ENLACE Domino connector 3.5 mm to 5.5mm

CODE : BS218

Compatible with NOVA™ & Ephorate™, Magnifica™, Magnifica™ FNC, CREER™



ENLACE Inline connector 3.5 mm to 5.5mm

CODE : BS219

Compatible with NOVA™ & Ephorate™, Magnifica™, Magnifica™ FNC, CREER™

ENLACE Triangle connector 3.5 mm to 5.5mm

CODE : BS220

Compatible with NOVA™ & Ephorate™, Magnifica™, Magnifica™ FNC, CREER™



ENLACE Inline Connector -5.5 to 5.5 mm

CODE : BS145

Compatible with 5.5 mm Pedicle Screw System (Ephorate™, Magnifica™, CREER™)



ENLACE Inline Connector-Long 5.5 to 5.5 mm

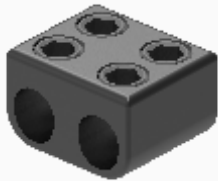
CODE : BS146

Compatible with 5.5 mm Pedicle Screw System (Ephorate™, Magnifica™, CREER™)

Spine Staple

CODE : BS113

Compatible with Ephorate™, Magnifica™, Magnifica™ FNC, CREER™



ENLACE Domino Connector-Square 5.5 X 5.5 mm

CODE : BS143

Compatible with 5.5 mm Pedicle Screw System (Ephorate™, Magnifica™, CREER™)

ENLACE Domino Connector -Rectangle 5.5 X 5.5 mm

CODE : BS144

Compatible with 5.5 mm Pedicle Screw System (Ephorate™, Magnifica™, CREER™)



40 mm



30 mm



20 mm

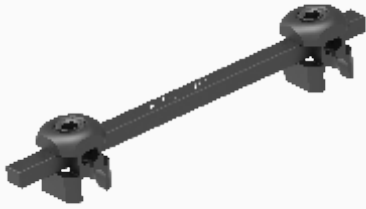
ENLACE Lateral Connector 5.5mm

SIZES

CODE	HEIGHT
BS147.20L	20mm
BS147.30L	30mm
BS147.40L	40mm

Compatible with 5.5 mm Pedicle Screw System (Ephorate™, Magnifica™, CREER™)

Spine Connecting System



5.5/3.0mm Cross link connector

CODE : BS112

5.5 mm Connecting Rod (COCR)

CODE : BS150.55.620

LENGTH : 620



3.0 mm Connecting Rod

CODE : BS151

SIZE : 50 to 120 mm (10mm Increment)

NOVA™

Tapered Rod CoCr

CODE : BS221.600

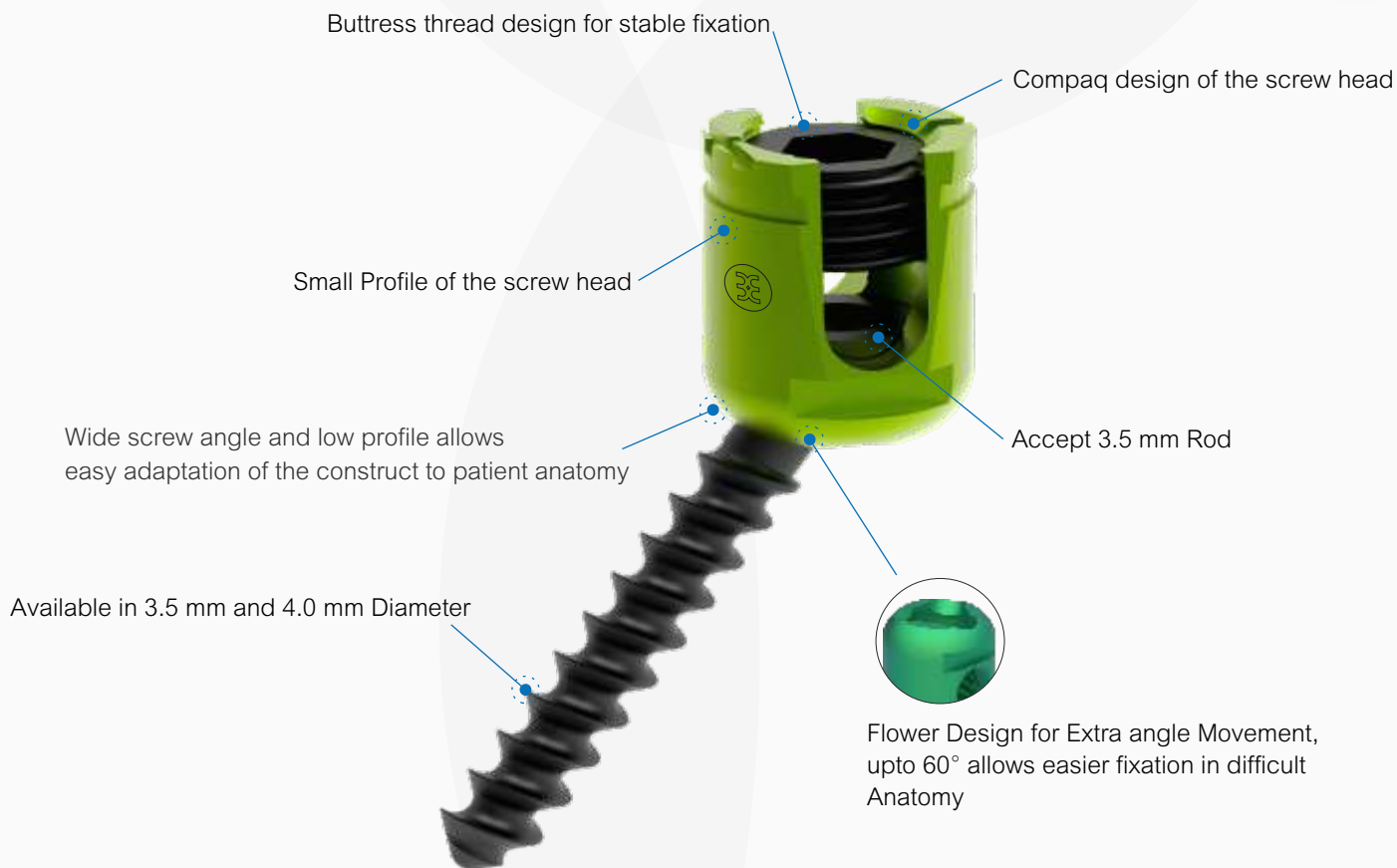


Compatible with NOVA™ & Ephorate™, Magnifica™, Magnifica™ FNC, CREER™

NOVA™ Posterior Cervical System



Features & Benefits



Nova Plus Ø 3.5 mm OCT
Multiaxial Screw
(Short Thread)

Code	Length (mm)
BS222.35.26	26mm
BS222.35.28	28mm
BS222.35.30	30mm
BS222.35.32	32mm
BS222.35.34	34mm
BS222.35.36	36mm
BS222.35.38	38mm
BS222.35.40	40mm

Nova Plus Ø 3.5 mm OCT
Multiaxial Screw
(Full Thread)

Code	Length (mm)
BS223.35.10	10mm
BS223.35.12	12mm
BS223.35.14	14mm
BS223.35.16	16mm
BS223.35.18	18mm
BS223.35.20	20mm
BS223.35.22	22mm
BS223.35.24	24mm
BS223.35.26	26mm
BS223.35.28	28mm
BS223.35.30	30mm
BS223.35.32	32mm
BS223.35.34	34mm
BS223.35.36	36mm
BS223.35.38	38mm
BS223.35.40	40mm

Nova Plus Ø 4.0 mm OCT
Multiaxial Screw
(Short Thread)

Code	Length (mm)
BS224.40.26	26mm
BS224.40.28	28mm
BS224.40.30	30mm
BS224.40.32	32mm
BS224.40.34	34mm
BS224.40.36	36mm
BS224.40.38	38mm
BS224.40.40	40mm

Nova Plus Ø 4.0 mm OCT
Multiaxial Screw
(Full Thread)

Code	Length (mm)
BS225.40.10	10mm
BS225.40.12	12mm
BS225.40.14	14mm
BS225.40.16	16mm
BS225.40.18	18mm
BS225.40.20	20mm
BS225.40.22	22mm
BS225.40.24	24mm
BS225.40.26	26mm
BS225.40.28	28mm
BS225.40.30	30mm
BS225.40.32	32mm
BS225.40.34	34mm
BS225.40.36	36mm
BS225.40.38	38mm
BS225.40.40	40mm

Features & Benefits



Partially Thread option available in 3.5 mm and 4.0 mm Diameter



Short Threaded Shaft



Set screw thread design ensures maximum strength and stabilization of the polyaxial construct



NOVA™
Posterior Cervical Connector
CODE : BS206

Nova Ø 3.5 mm

Posterior Cervical Screw (Short Thread)

Code	Length (mm)
BS201.35.26	26mm
BS201.35.28	28mm
BS201.35.30	30mm
BS201.35.32	32mm
BS201.35.34	34mm
BS201.35.36	36mm
BS201.35.38	38mm
BS201.35.40	40mm

Nova Ø 3.5 mm

Posterior Cervical Screw (Short Thread)

Code	Length (mm)
BS202.35.10	10mm
BS202.35.12	12mm
BS202.35.14	14mm
BS202.35.16	16mm
BS202.35.18	18mm
BS202.35.20	20mm
BS202.35.22	22mm
BS202.35.24	24mm
BS202.35.26	26mm
BS202.35.28	28mm
BS202.35.30	30mm

Nova Ø 4.0 mm

Posterior Cervical Screw (Short Thread)

Code	Length (mm)
BS203.40.26	26mm
BS203.40.28	28mm
BS203.40.30	30mm
BS203.40.32	32mm
BS203.40.34	34mm
BS203.40.36	36mm
BS203.40.38	38mm
BS203.40.40	40mm

Nova Ø 4.0 mm

Posterior Cervical Screw (Short Thread)

Code	Length (mm)
BS204.40.10	10mm
BS204.40.12	12mm
BS204.40.14	14mm
BS204.40.16	16mm
BS204.40.18	18mm
BS204.40.20	20mm
BS204.40.22	22mm
BS204.40.24	24mm
BS204.40.26	26mm
BS204.40.28	28mm
BS204.40.30	30mm

Ordering Information

SIZES

Code	Length (mm)
BS451.T30	3.0mm
BS451.T35	3.5mm
BS451.T40	4.0mm
BS451.T45	4.5mm
BS451.T50	5.0mm

NOVA Occipital Plate with adjustable connector

Code	Size
BS207.50	50mm
BS207.55	55mm

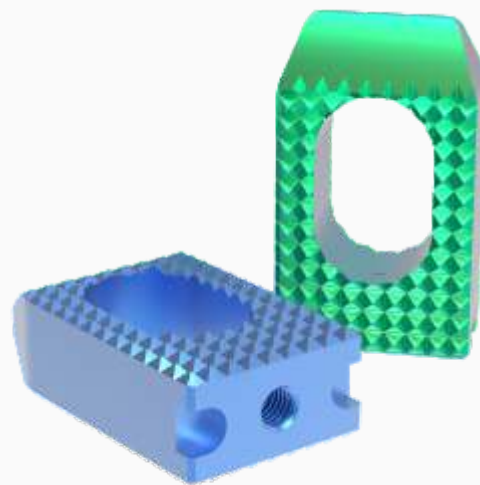
4.0 Occipital Lock Screw

Code	Size
BS208.40.14	14mm
BS208.40.16	16mm
BS208.40.18	18mm
BS208.40.20	20mm



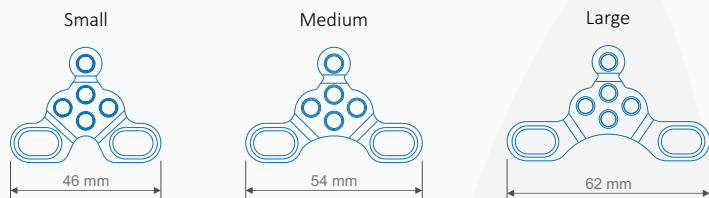
4.50 Occipital Lock Screw

Code	Size
BS209.45.14	14mm
BS209.45.16	16mm
BS209.45.18	18mm
BS209.45.20	20mm



Description

The Nova System offers three adjustable occipital plate sizes to accommodate the patient's anatomy. An occipital strap is available for fixation to the superior midline fixation hole. The Nova System offers \varnothing 4.0 / 4.35 mm occipital bone screws that have cortical threads. The Nova System has many occipital rod options including: pre-cut titanium, pre-contoured titanium. Rods transition to a \varnothing 3.5 mm diameter occipital portion to allow for a stronger construct.



4.0 Occipital Lock Screw Type II

Code	Size
BS216.40.06	6mm
BS216.40.08	8mm
BS216.40.10	10mm
BS216.40.12	12mm

4.35 Occipital Lock Screw Type II

Code	Size
BS217.43.06	06mm
BS217.43.08	08mm
BS217.43.10	10mm
BS217.43.12	12mm



OCCIFIX™

Plate Rod

Indication

The Nova System offers two adjustable occipital plate sizes to accommodate the patient's anatomy. This Occifix plate is available two different sizes and it is combined with the \varnothing 3.5mm diameter rod. The Nova System offers \varnothing 4.5 mm occipital bone screws that have cortical threads. The Nova System has many occipital rod options including: pre-cut titanium, pre-contoured titanium. Rods transition to a \varnothing 3.5 mm diameter occipital portion to allow for a stronger construct.

Sizes

Code	Size
BS212.100	100mm
BS212.200	200mm



Symplex II Anterior Cervical Spine Plate



Features



Code	Length (mm)
BS401.21	21mm
BS401.23	23mm
BS401.25	25mm
BS401.27	27mm
BS401.29	29mm
BS401.32	32mm
BS401.35	35mm
BS401.38	38mm
BS401.41	41mm
BS401.44	44mm
BS401.47	47mm
BS401.50	50mm
BS401.53	53mm
BS401.56	56mm
BS401.59	59mm
BS401.62	62mm
BS401.65	65mm
BS401.70	70mm



4.0mm Cervical Bon Screw (S/T)

Code	Length (mm)
BS402.40.14	14mm
BS402.40.16	16mm
BS402.40.18	18mm
BS402.40.20	20mm



4.35mm Cervical Bon Screw (S/D)

Code	Length (mm)
BS404.43.14	14mm
BS404.43.16	16mm
BS404.43.18	18mm
BS404.43.20	20mm



4.0mm Cervical Bon Screw (S/T)

Code	Length (mm)
BS403.40.13	13mm
BS403.40.15	15mm
BS403.40.17	17mm
BS403.40.19	19mm



4.35mm Cervical Bon Screw (S/D)

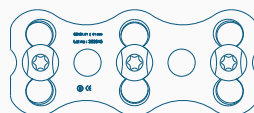
Code	Length (mm)
BS405.43.13	13mm
BS405.43.15	15mm
BS405.43.17	17mm
BS405.43.19	19mm



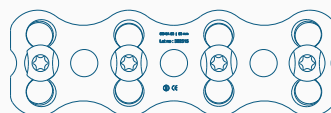
Level	Code	Length (mm)
1	BS448.21	21mm
	BS448.23	23mm
	BS448.25	25mm
	BS448.27	27mm
	BS448.29	29mm
	BS448.31	31mm
	BS448.33	33mm
	BS448.35	35mm
	BS448.37	37mm
	BS448.39	39mm
2	BS448.41	41mm
	BS448.43	43mm
	BS448.45	45mm
	BS448.47	47mm
	BS448.49	49mm
	BS448.55	55mm
	BS448.54	54mm
3	BS448.57	57mm
	BS448.60	60mm
	BS448.63	63mm
	BS448.66	66mm
	BS448.69	69mm
BS448.72	72mm	
BS448.75	75mm	



4 Holes



6 Holes



8 Holes

Fixed angle Cervical Screw

4.0 Fixed angle Cervical Screw

Code	Length (mm)
BS449.40.11	11mm
BS449.40.13	13mm
BS449.40.15	15mm
BS449.40.17	17mm
BS449.40.19	19mm



Variable angle Cervical Screw

4.0 Variable angle Cervical Screw T10 (S/D)

Code	Length (mm)
BS450.40.11	11mm
BS450.40.13	13mm
BS450.40.15	15mm
BS450.40.17	17mm
BS450.40.19	19mm



4.35 Fixed angle Cervical Screw

Code	Length (mm)
BS449.43.11	11mm
BS449.43.13	13mm
BS449.43.15	15mm
BS449.43.17	17mm
BS449.43.19	19mm

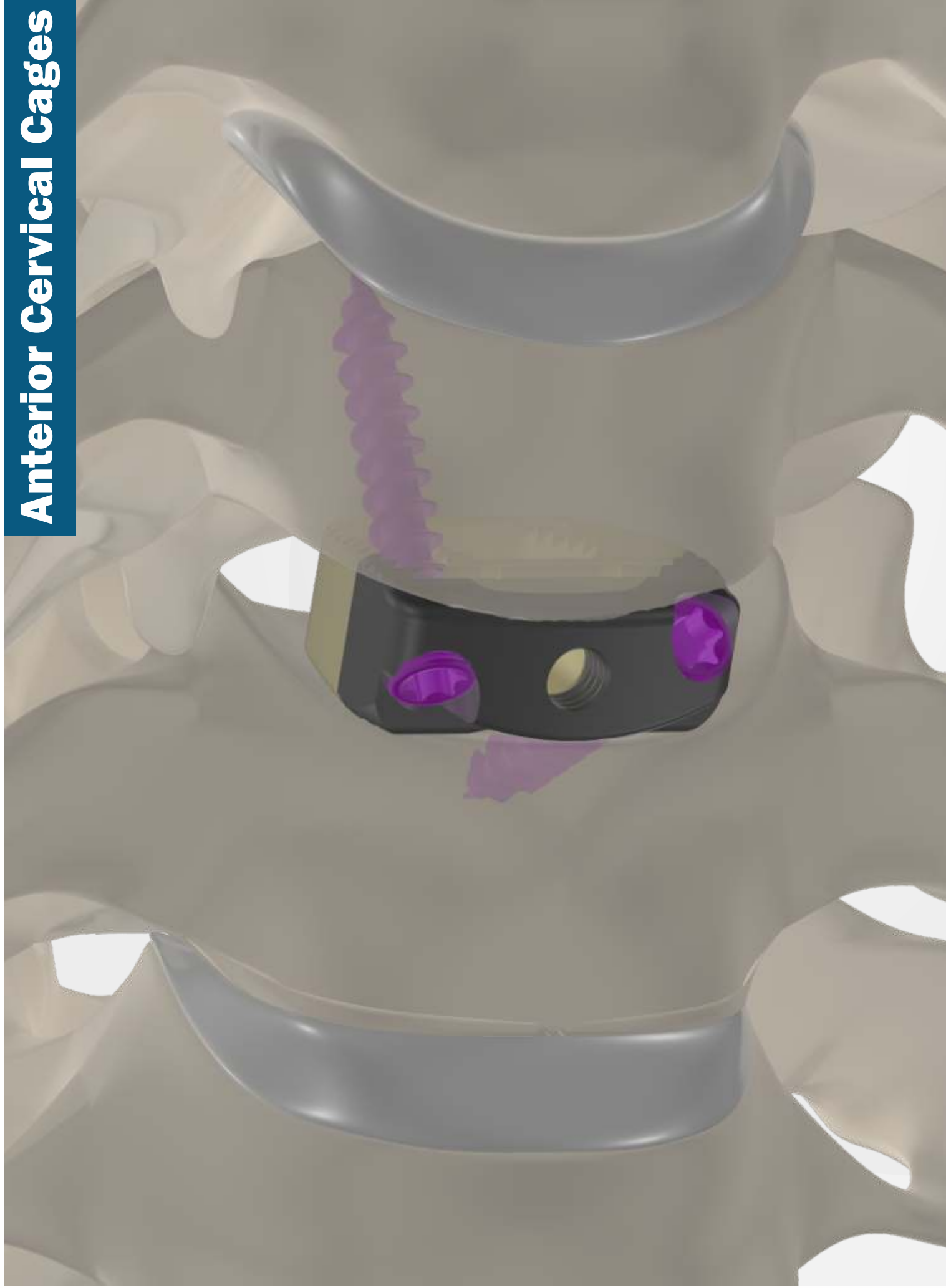


4.35 Variable angle Cervical Screw T10 (S/D)

Code	Length (mm)
BS450.43.11	11mm
BS450.43.13	13mm
BS450.43.15	15mm
BS450.43.17	17mm
BS450.43.19	19mm



Anterior Cervical Cages



DUO

Anterior Cervical Cage

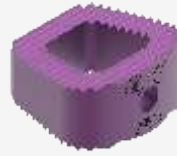
Feature



Large grafting area to optimize bone fusion.



X-ray markers allows 3D-Visualization and radiological identification.



Ordering Information

Titanium

Code	Length (mm)
BS407.05	5mm
BS407.06	6mm
BS407.07	7mm
BS407.08	8mm
BS407.09	9mm
BS407.10	10mm
BS407.11	11mm

PEEK

Code	Length (mm)
BS415.P05	5mm
BS415.P06	6mm
BS415.P07	7mm
BS415.P08	8mm
BS415.P09	9mm
BS415.P10	10mm
BS415.P11	11mm

D -

Anterior Cervical Cage

Feature



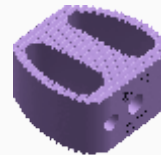
X-ray markers allows 3D-Visualization and radiological identification.



Large grafting area to optimize bone fusion.



Implant teeth reduces likelihood of migration in any direction.



Ordering Information

Titanium

Code	Length (mm)
BS408.05	5mm
BS408.06	6mm
BS408.07	7mm
BS408.08	8mm
BS408.09	9mm
BS408.10	10mm
BS408.11	11mm

PEEK

Code	Length (mm)
BS416.P05	5mm
BS416.P06	6mm
BS416.P07	7mm
BS416.P08	8mm
BS416.P09	9mm
BS416.P10	10mm
BS416.P11	11mm

Features

Natural Anatomical Profile

Integrated plate and spacer is designed to preserve the natural anatomical profile of the spine.

Less Disruptive

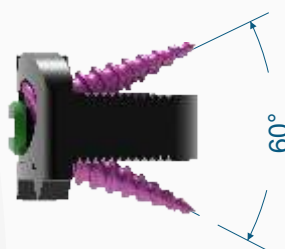
The system streamlines the entire ACDF procedure and facilitates a less invasive approach through a small incision with less retraction.

Biomechanical Strength and Stability

Biomechanically comparable to a traditional 2-level ACDF



Ordering Information



Titanium

PEEK

Code	Length
BS419.05	5mm
BS419.06	6mm
BS419.07	7mm
BS419.08	8mm
BS419.09	9mm

Code	Length
BS424.05	5mm
BS424.06	6mm
BS424.07	7mm
BS424.08	8mm
BS424.09	9mm
BS424.10	10mm

C-Xpan™

Cervical Interbody Cage, Expandable - PEEK

Code	Height	Length	Width
BS501.P04.1412	4mm	14	12
BS501.P04.1614	4mm	16	14
BS501.P05.1412	5mm	14	12
BS501.P05.1614	5mm	16	14
BS501.P06.1412	6mm	14	12
BS501.P06.1614	6mm	16	14
BS501.P07.1412	7mm	14	12
BS501.P07.1614	7mm	16	14
BS501.P08.1412	8mm	14	12
BS501.P08.1614	8mm	16	14
BS501.P09.1412	9mm	14	12
BS501.P09.1614	9mm	16	14
BS501.P10.1412	10mm	14	12
BS501.P10.1614	10mm	16	14

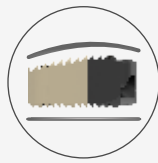


Indication

- Degenerative disc disease (DDD, defined as neck pain of discogenic origin degeneration of the disc confirmed by history and radiographic studies)
- Spinal stenosis
- Failed previous fusions
- Pseudoarthrosis



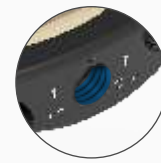
Aggressive tooth



Anatomical Shape



Large BoneDraft Window

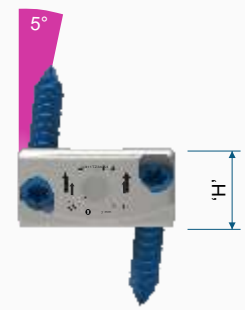
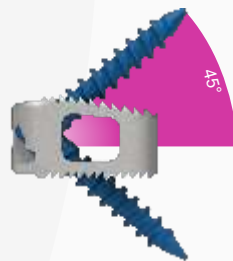


Threaded inserter allows for quick capture and stable insertion.

Ordering Information

Titanium

Code	Height	Length	Width
BS421.05	5mm	12	15
BS421.06	6mm	12	15
BS421.07	7mm	12	15
BS421.08	8mm	12	15
BS421.09	9mm	12	15
BS421.10	10mm	12	15

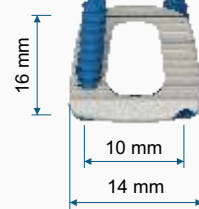


Peek

Code	Height	Length	Width
BS425.05	5mm	12	15
BS425.06	6mm	12	15
BS425.07	7mm	12	15
BS425.08	8mm	12	15
BS425.09	9mm	12	15
BS425.10	10mm	12	15

3.0 mm Aviation Cage Locking Screw (S/D - S/T)

Code	Length
BS445.30.12	12mm
BS445.30.14	14mm
BS445.30.16	16mm
BS445.30.18	18mm
BS445.30.20	20mm



PEEK with Bone Graft

Code	Height	Length	Width
BS462.05	5mm	12	15
BS462.06	6mm	12	15
BS462.07	7mm	12	15
BS462.08	8mm	12	15
BS462.09	9mm	12	15
BS462.10	10mm	12	15



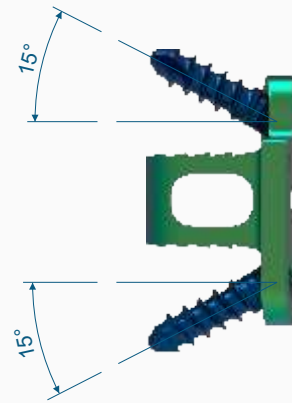
Indication

- Degenerative disc disease (DDD, defined as neck pain of discogenic origin degeneration of the disc confirmed by history and radiographic studies)
- Spinal stenosis
- Failed previous fusions
- Pseudoarthrosis



Feature

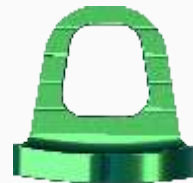
- High mechanical strength and stability for demanding cervical surgical procedures
- Simple surgical technique from preformed plates and fixed-angle screws
- Self-locking screw
- Accommodates autogenous bone graft to allow fusion to occur through the implant.
- Self-drilling screw design offers quicker bone screw purchase.



Ordering Information

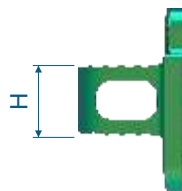
Titanium

Code	Height	Length	Width
BS420.05	5mm	12	15
BS420.06	6mm	12	15
BS420.07	7mm	12	15
BS420.08	8mm	12	15
BS420.09	9mm	12	15
BS420.10	10mm	12	15



Peek

Code	Height	Length	Width
BS443.05	5mm	12	15
BS443.06	6mm	12	15
BS443.07	7mm	12	15
BS443.08	8mm	12	15
BS443.09	9mm	12	15
BS443.10	10mm	12	15



PRIME™

Expandable Jack Cage with Plate

Indications

PRIME™ Anterior Expandable Spacer designed to be used after & partial corpectomy caused by destruction of the vertebral body

Feature

- Anterior vertebral column stabilized to become load bearing
- Vertebral bodies can be substituted
- Cylindrical Hollow design offers to be filled implants with bone substitute.
- The Implant is harbour easily & safely between the adjacent end plate of the vertebral bodies.



Ordering Information

Code	Dia	Size	Code	Dia	Size	Code	Dia	Size
BS422.T12.20	Ø12	20X25	BS422.T14.20	Ø14	20X25	BS422.T16.20	Ø16	20X25
BS422.T12.25	Ø12	25X30	BS422.T14.25	Ø14	25X30	BS422.T16.25	Ø16	25X30
BS422.T12.30	Ø12	30X40	BS422.T14.30	Ø14	30X40	BS422.T16.30	Ø16	30X40

PRIME PLUS™

Expandable Jack Cage with Plate

Ordering Information

Code	Dia	Size	Code	Dia	Size	Code	Dia	Size
BS457.T12.13	Ø12	13X18	BS457.T14.13	Ø14	13X18	BS457.T16.13	Ø16	13X18
BS457.T12.17	Ø12	17X26	BS457.T14.17	Ø14	17X26	BS457.T16.17	Ø16	17X26
BS457.T12.25	Ø12	25X41	BS457.T14.25	Ø14	25X41	BS457.T16.25	Ø16	25X41
BS457.T12.40	Ø12	40X65	BS457.T14.40	Ø14	40X65	BS457.T16.40	Ø16	40X65



PRIME™

Expandable Jack Cage with Plate

Indications

PRIME™ Anterior Expandable Spacer designed to be used after & partial corpectomy caused by destruction of the vertebral body

Feature

- Anterior vertebral column stabilized to become load bearing
- Vertebral bodies can be substituted
- Cylindrical Hollow design offers to be filled implants with bone substitute.
- The Implant is harbour easily & safely between the adjacent end plate of the vertebral bodies.



Ordering Information

Code	Dia	Size	Code	Dia	Size	Code	Dia	Size
BS423.T12.20	Ø12	20X25	BS423.T14.20	Ø14	20X25	BS423.T16.20	Ø16	20X25
BS423.T12.25	Ø12	25X32.5	BS423.T14.25	Ø14	25X32.5	BS423.T16.25	Ø16	25X32.5
BS423.T12.30	Ø12	30X42.5	BS423.T14.30	Ø14	30X42.5	BS423.T16.30	Ø16	30X42.5

PRIME PLUS™

Expandable Jack Cage with Plate

Ordering Information

Code	Dia	Size	Code	Dia	Size	Code	Dia	Size
BS456.T12.13	Ø12	13X18	BS456.T14.13	Ø14	13X18	BS456.T16.13	Ø16	13X18
BS456.T12.17	Ø12	17X26	BS456.T14.17	Ø14	17X26	BS456.T16.17	Ø16	17X26
BS456.T12.25	Ø12	25X41	BS456.T14.25	Ø14	25X41	BS456.T16.25	Ø16	25X41
BS456.T12.40	Ø12	40X65	BS456.T14.40	Ø14	40X65	BS456.T16.40	Ø16	40X65



AVIATION™

Cervical Disc - Prosthesis

NEXPINE™
Near Level Spine

Code	Height	Length	Width
BS455.05.1412	5mm	14	12
BS455.05.1614	5mm	16	14
BS455.06.1412	6mm	14	12
BS455.06.1614	6mm	16	14
BS455.07.1412	7mm	14	12
BS455.07.1614	7mm	16	14
BS455.08.1412	8mm	14	12
BS455.08.1614	8mm	16	14



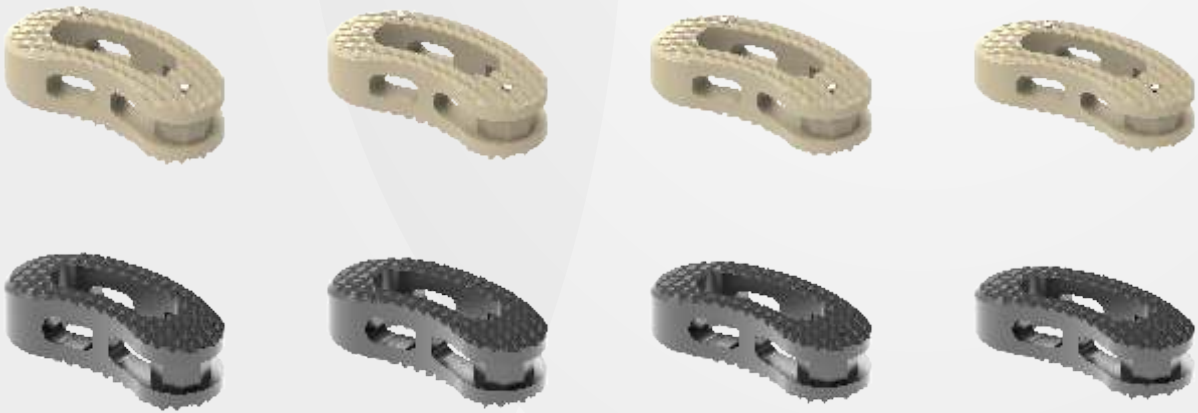
DENSIN™

Anterior Cervical Lag Screw - S/D, Cannulated

Code	Length (mm)
BS152.35.28	28mm
BS152.35.30	30mm
BS152.35.32	32mm
BS152.35.34	34mm
BS152.35.36	36mm
BS152.35.38	38mm
BS152.35.40	40mm
BS152.35.42	42mm
BS152.35.44	44mm
BS152.35.46	46mm
BS152.35.48	48mm
BS152.35.50	50mm



Lumber Cages

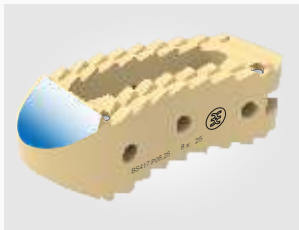


TLIF Spine Fusion Cage

Banana Cage

Indications

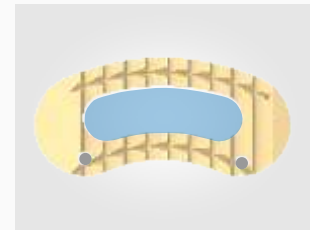
- Advanced Discopathies
- Extensive Decompression
- Spodylolisthesis
- Failed disc surgery
- Re-current disc herniation
- Post-operative instability
- Lumbar pseudarthrosis



Tapered tip facilitates easy insertion.



Anatomical shape and aggressive tooth pattern maximizes end plate contact and stability.



Large graft area allows substantial bone growth.

Ordering Information

Titanium

Code	Height	Length (mm)
BS412.07.25	07	25mm
BS412.08.25	08	25mm
BS412.09.25	09	25mm
BS412.10.25	10	25mm
BS412.11.25	11	25mm
BS412.12.25	12	25mm
BS412.13.25	13	25mm
BS412.14.25	14	25mm

Code	Height	Length (mm)
BS412.07.30	07	30mm
BS412.08.30	08	30mm
BS412.09.30	09	30mm
BS412.10.30	10	30mm
BS412.11.30	11	30mm
BS412.12.30	12	30mm
BS412.13.30	13	30mm
BS412.14.30	14	30mm

Peek

Code	Height	Length (mm)
BS417.P07.25	07	25mm
BS417.P08.25	08	25mm
BS417.P09.25	09	25mm
BS417.P10.25	10	25mm
BS417.P11.25	11	25mm
BS417.P12.25	12	25mm
BS417.P13.25	13	25mm
BS417.P14.25	14	25mm

Code	Height	Length (mm)
BS417.P07.30	07	30mm
BS417.P08.30	08	30mm
BS417.P09.30	09	30mm
BS417.P10.30	10	30mm
BS417.P11.30	11	30mm
BS417.P12.30	12	30mm
BS417.P13.30	13	30mm
BS417.P14.30	14	30mm

PLIF Spine Fusion Cage

Bullet Cage

Features & Advantages

- Imported Medical Vesta material

Closed to human skeleton in modulus of elasticity share the stress with cancellous bone and facilitates fusion X-ray permeable and make fusion observation convenient after surgery

- Preset X-ray Marker

Facilitate confirming implant location during and after surgery

- Bullet shaped foreside

Easier insertion specially anteriorly

- Convex design

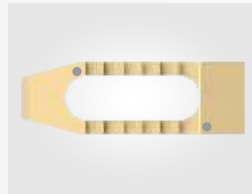
Fit closer to vertebral
Self-distracting intervertebral space at insertion
Facilitates maintenance and restoration of lumbar physiological curvature and prevent lumbago after surgery

- Serrated teeth surface

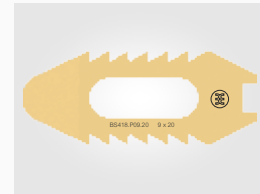
Provide ideal initial stability and no easy to come off



Bullet shaped foreside



Preset X-ray Marker



Serrated teeth surface

Ordering Information

Titanium

Code	Height	Length (mm)
BS414.07.20	07	20mm
BS414.08.20	08	20mm
BS414.09.20	09	20mm
BS414.10.20	10	20mm
BS414.11.20	11	20mm
BS414.12.20	12	20mm
BS414.13.20	13	20mm
BS414.14.20	14	20mm

Code	Height	Length (mm)
BS414.07.22	07	22mm
BS414.08.22	08	22mm
BS414.09.22	09	22mm
BS414.10.22	10	22mm
BS414.11.22	11	22mm
BS414.12.22	12	22mm
BS414.13.22	13	22mm
BS414.14.22	14	22mm

Code	Height	Length (mm)
BS414.07.25	07	25mm
BS414.08.25	08	25mm
BS414.09.25	09	25mm
BS414.10.25	10	25mm
BS414.11.25	11	25mm
BS414.12.25	12	25mm
BS414.13.25	13	25mm
BS414.14.25	14	25mm

Peek

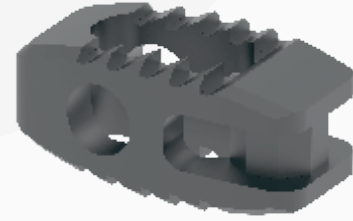
Code	Height	Length (mm)
BS418.P07.20	07	20mm
BS418.P08.20	08	20mm
BS418.P09.20	09	20mm
BS418.P10.20	10	20mm
BS418.P11.20	11	20mm
BS418.P12.20	12	20mm
BS418.P13.20	13	20mm
BS418.P14.20	14	20mm

Code	Height	Length (mm)
BS418.P07.22	07	22mm
BS418.P08.22	08	22mm
BS418.P09.22	09	22mm
BS418.P10.22	10	22mm
BS418.P11.22	11	22mm
BS418.P12.22	12	22mm
BS418.P13.22	13	22mm
BS418.P14.22	14	22mm

Code	Height	Length (mm)
BS418.P07.25	07	25mm
BS418.P08.25	08	25mm
BS418.P09.25	09	25mm
BS418.P10.25	10	25mm
BS418.P11.25	11	25mm
BS418.P12.25	12	25mm
BS418.P13.25	13	25mm
BS418.P14.25	14	25mm

Features :

- Large segmental bone graft area for better fusion, promote better graft integration and maximize contact area between vertebral end plate and bone graft.

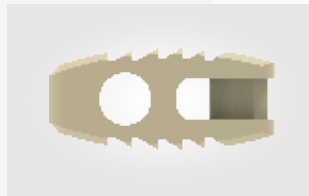


Indications :

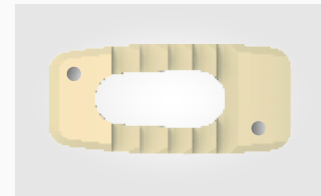
- Degenerative disk disease end spinal instability
- Degenerative spondylolisthesis
- Spondylolisthesis by isthmic lysis
- Narrow lumbar spinal canal
- Pseudarthrosis



Bullet shaped foreside



Serrated teeth surface



Preset X-ray Marker

Ordering Information

Titanium

Code	Height	Length (mm)
BS440.T07.22	07	22mm
BS440.T08.22	08	22mm
BS440.T09.22	09	22mm
BS440.T10.22	10	22mm
BS440.T11.22	11	22mm
BS440.T12.22	12	22mm
BS440.T13.22	13	22mm
BS440.T14.22	14	22mm

Code	Height	Length (mm)
BS440.T07.26	07	26mm
BS440.T08.26	08	26mm
BS440.T09.26	09	26mm
BS440.T10.26	10	26mm
BS440.T11.26	11	26mm
BS440.T12.26	12	26mm
BS440.T13.26	13	26mm
BS440.T14.26	14	26mm

Code	Height	Length (mm)
BS440.T07.32	07	32mm
BS440.T08.32	08	32mm
BS440.T09.32	09	32mm
BS440.T10.32	10	32mm
BS440.T11.32	11	32mm
BS440.T12.32	12	32mm
BS440.T13.32	13	32mm
BS440.T14.32	14	32mm

Peek

Code	Height	Length (mm)
BS438.P07.22	07	22mm
BS438.P08.22	08	22mm
BS438.P09.22	09	22mm
BS438.P10.22	10	22mm
BS438.P11.22	11	22mm
BS438.P12.22	12	22mm
BS438.P13.22	13	22mm
BS438.P14.22	14	22mm

Code	Height	Length (mm)
BS438.P07.26	07	26mm
BS438.P08.26	08	26mm
BS438.P09.26	09	26mm
BS438.P10.26	10	26mm
BS438.P11.26	11	26mm
BS438.P12.26	12	26mm
BS438.P13.26	13	26mm
BS438.P14.26	14	26mm

Code	Height	Length (mm)
BS438.P07.32	07	32mm
BS438.P08.32	08	32mm
BS438.P09.32	09	32mm
BS438.P10.32	10	32mm
BS438.P11.32	11	32mm
BS438.P12.32	12	32mm
BS438.P13.32	13	32mm
BS438.P14.32	14	32mm

Features :

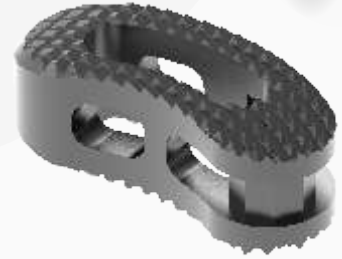
- Large segmental bone graft area for better fusion, promote better graft integration and maximize contact area between vertebral end plate and bone graft.

Indications :

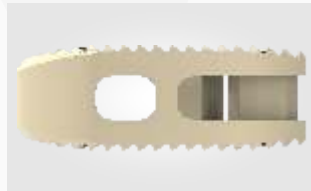
- Degenerative disk disease and spinal instability
- Degenerative spondylolisthesis
- Spondylolisthesis by isthmic lysis
- Narrow lumbar spinal canal
- Pseudarthrosis

Contraindications :

- Major spinal instability
- Vertebral body fracture
- Spinal tumors



Tapered tip facilitates easy insertion.



Anatomical shape and aggressive tooth pattern maximizes end plate contact and stability.



Large graft area allows substantial bone growth.

Ordering Information

Titanium

27 X 10 mm

Code	Height	Length (mm)
BS441.T07.2710	07	27mm
BS441.T08.2710	08	27mm
BS441.T09.2710	09	27mm
BS441.T10.2710	10	27mm
BS441.T11.2710	11	27mm
BS441.T12.2710	12	27mm
BS441.T13.2710	13	27mm
BS441.T14.2710	14	27mm

30 X 10 mm

Code	Height	Length (mm)
BS441.T07.3010	07	30mm
BS441.T08.3010	08	30mm
BS441.T09.3010	09	30mm
BS441.T10.3010	10	30mm
BS441.T11.3010	11	30mm
BS441.T12.3010	12	30mm
BS441.T13.3010	13	30mm
BS441.T14.3010	14	30mm

27 X 12 mm

Code	Height	Length (mm)
BS441.T07.2712	07	27mm
BS441.T08.2712	08	27mm
BS441.T09.2712	09	27mm
BS441.T10.2712	10	27mm
BS441.T11.2712	11	27mm
BS441.T12.2712	12	27mm
BS441.T13.2712	13	27mm
BS441.T14.2712	14	27mm

30 X 12 mm

Code	Height	Length (mm)
BS441.T07.3012	07	30mm
BS441.T08.3012	08	30mm
BS441.T09.3012	09	30mm
BS441.T10.3012	10	30mm
BS441.T11.3012	11	30mm
BS441.T12.3012	12	30mm
BS441.T13.3012	13	30mm
BS441.T14.3012	14	30mm

Peek

27 X 10 mm

Code	Height	Length (mm)
BS439.P07.2710	07	27mm
BS439.P08.2710	08	27mm
BS439.P09.2710	09	27mm
BS439.P10.2710	10	27mm
BS439.P11.2710	11	27mm
BS439.P12.2710	12	27mm
BS439.P13.2710	13	27mm
BS439.P14.2710	14	27mm

30 X 10 mm

Code	Height	Length (mm)
BS439.P07.3010	07	30mm
BS439.P08.3010	08	30mm
BS439.P09.3010	09	30mm
BS439.P10.3010	10	30mm
BS439.P11.3010	11	30mm
BS439.P12.3010	12	30mm
BS439.P13.3010	13	30mm
BS439.P14.3010	14	30mm

27 X 12 mm

Code	Height	Length (mm)
BS439.P07.2712	07	27mm
BS439.P08.2712	08	27mm
BS439.P09.2712	09	27mm
BS439.P10.2712	10	27mm
BS439.P11.2712	11	27mm
BS439.P12.2712	12	27mm
BS439.P13.2712	13	27mm
BS439.P14.2712	14	27mm

30 X 12 mm

Code	Height	Length (mm)
BS439.P07.3012	07	30mm
BS439.P08.3012	08	30mm
BS439.P09.3012	09	30mm
BS439.P10.3012	10	30mm
BS439.P11.3012	11	30mm
BS439.P12.3012	12	30mm
BS439.P13.3012	13	30mm
BS439.P14.3012	14	30mm



Ordering Information

PEEK

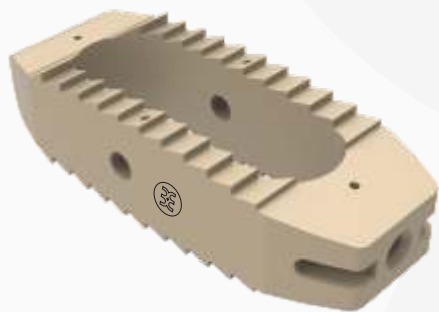
Code	Height (mm)
BS503.P06	6mm
BS503.P07	7mm
BS503.P08	8mm
BS503.P09	9mm
BS503.P10	10mm
BS503.P11	11mm
BS503.P12	12mm
BS503.P13	13mm
BS503.P14	14mm
BS503.P15	15mm
BS503.P16	16mm

Ordering Information

PEEK

Code	Height	Length
BS502.P06	6mm	28mm
BS502.P07	7mm	28mm
BS502.P08	8mm	28mm
BS502.P09	9mm	28mm
BS502.P10	10mm	28mm
BS502.P11	11mm	28mm
BS502.P12	12mm	28mm
BS502.P13	13mm	28mm
BS502.P14	14mm	28mm
BS502.P15	15mm	28mm
BS502.P16	16mm	28mm





OLIF Cage

0°

Code	Height
BS458.45.09	09mm
BS458.45.10	10mm
BS458.45.11	11mm
BS458.45.12	12mm
BS458.45.13	13mm
BS458.45.14	14mm
BS458.45.15	15mm
BS458.45.16	16mm

Code	Height
BS458.50.09	09mm
BS458.50.10	10mm
BS458.50.11	11mm
BS458.50.12	12mm
BS458.50.13	13mm
BS458.50.14	14mm
BS458.50.15	15mm
BS458.50.16	16mm

Code	Height
BS458.55.09	09mm
BS458.55.10	10mm
BS458.55.11	11mm
BS458.55.12	12mm
BS458.55.13	13mm
BS458.55.14	14mm
BS458.55.15	15mm
BS458.55.16	16mm

Code	Height
BS458.60.09	09mm
BS458.60.10	10mm
BS458.60.11	11mm
BS458.60.12	12mm
BS458.60.13	13mm
BS458.60.14	14mm
BS458.60.15	15mm
BS458.60.16	16mm

6°

Code	Height
BS459.45.09	09mm
BS459.45.10	10mm
BS459.45.11	11mm
BS459.45.12	12mm
BS459.45.13	13mm
BS459.45.14	14mm
BS459.45.15	15mm
BS459.45.16	16mm

Code	Height
BS458.50.09	09mm
BS458.50.10	10mm
BS458.50.11	11mm
BS458.50.12	12mm
BS458.50.13	13mm
BS458.50.14	14mm
BS458.50.15	15mm
BS458.50.16	16mm

Code	Height
BS458.55.09	09mm
BS458.55.10	10mm
BS458.55.11	11mm
BS458.55.12	12mm
BS458.55.13	13mm
BS458.55.14	14mm
BS458.55.15	15mm
BS458.55.16	16mm

Code	Height
BS458.60.09	09mm
BS458.60.10	10mm
BS458.60.11	11mm
BS458.60.12	12mm
BS458.60.13	13mm
BS458.60.14	14mm
BS458.60.15	15mm
BS458.60.16	16mm

OLIF Plate

Code	Size
BS460.S	SMALL
BS460.L	LARGE

OLIF S/T Screw ϕ 5.5

Code	Length
BS461.20	20mm
BS461.25	25mm
BS461.30	30mm
BS461.35	35mm
BS461.40	40mm
BS461.45	45mm
BS461.50	50mm

Code	Degree	Length(mm)	Width
BS447.T22.03	3°	22	10
BS447.T22.08	8°	22	10
BS447.T26.03	3°	26	10
BS447.T26.08	8°	26	10
BS447.T32.03	3°	32	10
BS447.T32.08	8°	32	10



Indications

The mesh prevents the bone chips from encroaching on the spinal canal and prevents potential neurogenic compression due to ectopic bone formation. The Titanium Mesh Cage as a multisegmental concave support in kyphotic deformities and as a posterior interlaminar spacer or lamina replacement after wide laminectomy are additional applications.



Diamond Cut



Round Cut

Ordering Information

Round Cut

Code	Dia(mm)	Length
BS409.10	10	100
BS409.12	12	100
BS409.14	14	100
BS409.16	16	100
BS409.18	18	100
BS409.20	20	100

Ordering Information

Diamond Cut

Code	Dia(mm)	Length
BS410.10	10	100
BS410.12	12	100
BS410.14	14	100
BS410.16	16	100
BS410.18	18	100
BS410.20	20	100

Expandable Cage

Features & Benefits

Minimized insertion height

- Help reduce nerve root retraction
- Minimizes impaction force

Controlled continuous expansion

- Allows an optimized endplate-to-endplate fit
- May help reduce the risk of over-distraction once in the disc space

In situ distraction

- Allows height restoration and an optimized fit



Ordering Information

Code	Dia	Size
BS411.12.2025	Ø12	20X25
BS411.12.2535	Ø12	25X35
BS411.12.4555	Ø12	45X55
BS411.12.5575	Ø12	55X75

Code	Dia	Size
BS411.14.2025	Ø14	20X25
BS411.14.2355	Ø14	25X35
BS411.14.4555	Ø14	45X55
BS411.14.5575	Ø14	55X75

Code	Dia	Size
BS411.16.2025	Ø16	20X25
BS411.16.2535	Ø16	25X35
BS411.16.4555	Ø16	45X55
BS411.16.5575	Ø16	55X75

Code	Dia	Size
BS411.18.2025	Ø18	20X25
BS411.18.2535	Ø18	25X35
BS411.18.4555	Ø18	45X55
BS411.18.5575	Ø18	55X75

Features

- In situ distraction – Allows precise adjustment of the implant height
- Large filling volume for bone/bone substitute material
- Clear instrument set and easy handling



Ordering Information

Code	Dia	Size
BS422.T12.20	Ø12	20X25
BS422.T12.25	Ø12	25X30
BS422.T12.30	Ø12	30X40

Code	Dia	Size
BS422.T14.20	Ø14	20X25
BS422.T14.25	Ø14	25X30
BS422.T14.30	Ø14	30X40

Code	Dia	Size
BS422.T16.20	Ø16	20X25
BS422.T16.25	Ø16	25X30
BS422.T16.30	Ø16	30X40

BONETECH MEDISYS PVT. LTD.

Survey No. 16, B/h. Hathijan Swaminarayan Mandir, Bonetech Road, Nr. Geratnagar Village, A' bad-Mahemdavad Highway. A'bad, GUJARAT - 382445. INDIA.

Customer Care Number: +91 95128 27704 | info@bonetechmedisys.com | export@bonetechmedisys.com | www.bonetechmedisys.com

TRAUMEX

INTREX

NEXPINE

RTHROX

XTERFIX

ARTIQLX

PRIMEX

AFFILEX