

KALAPI[®]
Quality Tractor Parts



**PRODUCT
CATALOGUE**

**MANUFACTURER &
EXPORTER OF
TRACTOR PARTS
(HYDRAULIC & OTHER PARTS)**



**PRECISION IN EVERY PART,
VALUE AT EVERY TURN
KALAPI TRACTOR PARTS
IS YOUR BEST CHOICE**



Company Profile:

Kalapi Tractor Spares Pvt. Ltd. embarked on its journey in 1988 with a humble start of 450 sq. feet workshop in Rajkot, Gujarat, India. From this modest beginning, we set out to carve a niche in the rapidly expanding and promising market of tractor parts and components. Over the years, through dedication, innovation, and unwavering commitment to quality, we have grown into a reputable manufacturer and supplier of Hydraulic Tractor Parts, serving customers both locally and globally.

Today **Kalapi Tractor Spares Pvt. Ltd.** is a name to reckon in Tractor Parts & Component markets due to our considerable presence in local markets and ever growing overseas export market.

We are continuously upgrading new and advanced technology enabled machineries to get optimum results in quality. For rapid growth and standardization in production we are having a good blend of latest machines like **CNCs, VMCs, HMCs and SPMs** to handle any mass production requirement with speed and accuracy. We have achieved **90% manufacturing process automation** in the last three decades. So now we are able to ensure that our valued customers will always get on-time delivery of ordered products with **Enhanced Quality @ reduced cost**.

Vision:

At Kalapi Tractor Spares Pvt. Ltd., our vision is to be the preferred choice for farmers and agricultural equipment manufacturers seeking reliable, innovative and cost-effective Hydraulic Tractor Parts.

Mission:

We are driven by a mission to consistently exceed customer expectations through excellence in product quality, customer service, and technological advancement. Our ultimate goal is to contribute to the efficiency and productivity of the agricultural sector while fostering sustainable growth, making a meaningful impact and leaving a lasting legacy in the agricultural industry.





Infrastructure

Welcome to our New Production Facility at **Ravki Industrial Zone** at Rajkot.



Rajkot, being Auto Part Hub of India, has inherent Strategic Location Advantage such as Suitable Atmosphere, Best Raw Material Availability and Easy Available Required Talent Pool. We have established State-of-the-art manufacturing facility on sprawling area over **120000 sq. ft.** in the outskirts of Rajkot City. We have invested heavily to build robust RCC beam Column strong structure to eliminate any vibration in machining for improved output. We have best utilize this land for different processes like Production Area for machinery and assembly lines, Warehouse and Storage Space to protect raw material and finished goods from any Atmospheric Changes, Dedicated dispatch Area for smooth handling of material, Huge Office Space, Residential Quarters for staff and worker, and Canteen facility also.

Quality

1. Quality is the back bone of every organization. For us quality is not the matter of accident but conscious effort. Our quality policy is built on the foundation of Key Principles such as Revolutionary Designing, Quality Raw Material, and Stringent Quality Control at every stage of process, Continuous Improvement, Precision Engineering and Customer Delight.

2. We strive to achieve excellence through technologically advanced equipment including CMM (Coordinate Measuring Machine), Air Gauges, and 2D Height Gauge, to ensure the accuracy, consistency, and precision in our Hydraulic Tractor Parts.

3. By regularly reviewing our quality management system, analyzing performance data, and soliciting feedback from customers and stakeholders, we strive to enhance the effectiveness, efficiency, and agility of our operations.

At **Kalapi Tractor Spares Pvt. Ltd.**, quality is not just a goal—it's a promise we uphold in every parts we produce





Sr No.: 1002 : PUSH GUIDE { VALVE-TAPPET }
Ref. No.: C7NN6500B



Sr No.: 1012 : DRAFT CONTROL PLUNGER
Ref. No.: C5NN541A



Sr No.: 1013 : OIL PUMP INTERMEDIATE SHAFT
Ref. No.: C7NN6A605A



Sr No.: 1014 : CAM SHAFT ADOPTER O/M.
Ref. No.: C5NE6A255A



Sr No.: 1016 : PLUNGER YOKE O/M
Ref. No.: C5NN546C



Sr No.: 1017 : PLUNGER YOKE N/M
Ref. No.: 93NH546AA



Sr No.: 1019 : HYD. LIFT PUMP PLATE { IMP. PUMP }
Ref. No.: CONN852A



Sr No.: 1020 : OIL PUMP DRIVE SHAFT FORD-3610
Ref. No.: N. P. N.



Sr No.: 1021 : OIL PUMP DRIVE GEAR WITH SHAFT
FORD-3610 { MAT. USE M.S. WITHOUT HARD }
Ref. No.: D3NN6A820E



Sr No.: 1021-A : OIL PUMP DRIVE GEAR WITH SHAFT
FORD-3610 { HARD } BLACK
Ref. No.: D3NN6A820E



Sr No.: 1027 : CONTROL VALVE ASSLY FORD-3610 STD
Sr No.: 1027-A : O/S. (10,20,30,40,50,60)
Sr No.: 1027-B : Special O/S. Ref. No.: EONN488EA



Sr No.: 1028 : CONTROL VALVE ASSLY. FORD-3600 STD
Sr No.: 1028-A : O/S. (10,20,30,40,50,60)
Sr No.: 1028-B : Special O/S. Ref. No.: D3NN488

FORD FARM TRAC TRACTOR PARTS



Sr No.: 1029 : UNLOAD VALVE ASSLY. FORD-3610 STD
Sr No.: 1029-A : O/S. (10,20,30,40,50,60)
Sr No.: 1029-B : Special O/S. Ref. No.: E0NN925



Sr No.: 1031 : FLOW CONTROL VALVE ASSLY. FORD-3610 STD
Sr No.: 1031-A : O/S. (10,20,30,40,50,60)
Sr No.: 1031-B : Special O/S. Ref. No.: E0NNF928



Sr No.: 1032 : SAFETY VALVE FORD
Ref. No.: 957E984B



Sr No.: 1033 : CAM SHAFT ADOPTER N/M
Ref. No.:



Sr No.: 1034 : OIL PUMP ROTOR & SHAFT ASSLY.
Ref. No.: D1NN6608D



Sr No.: 1043 : DRAFT CONTROL PLUNGER WITH YOKE O/M
Ref. No.: N. P. N.



Sr No.: 1044 : DRAFT CONTROL PLUNGER WITH YOKE O/M
Ref. No.: N. P. N.



Sr No.: 1046 : CONTROL VALVE WITH SLEEVE ASSLY.
FORD-3000 STD Ref. No.: C7NN488
Sr No.: 1046-A : O/S. (10,20,30,40)



Sr No.: 1049 : RAM CYLINDER PISTON STD FORD (76mm)
Sr No.: 1050 : O/S. (10,20,30,40)
Ref. No.: C5NN530B



Sr No.: 1063 : ARM SHAFT BUSH FORD-5000
Ref. No.: C5NN531A / 83933328



Sr No.: 1065 : RELIEF VALVE FORD 3000
Ref. No.: E1ADDN984, 81717251



Sr No.: 1067 : HYD. LIFT ARM SHAFT BUSH (SET OF 4 PCS)
Ref. No.:



Sr No.: 1068 : RELIEF VALVE FORD-5000, 5600
Ref. No.: 81838679, 83911832, D3NN984C, D5NN984A



Sr No.: 1069 : VALVE TAPPET
Ref. No.: E1ADKN6489B



Sr No.: 1070 : ROCKER BRACKET FORD 3620
Ref. No.: 90NH535AB



Sr No.: 1071 : HYD. RAM CYLINDER ASSLY. FORD-5000
(85 MM)
Ref. No.:



Sr No.: 1072 : RAM CYLINDER PISTON FORD-5000
(85 MM)
Ref. No.: E1ADDN530



Sr No.: 1073 : UNLOAD VALVE ASSLY. FORD-5000
Ref. No.: D7NN925B, D3NN482H



Sr No.: 2001 : PUSH GUIDE { VALVE TAPPETS }
Ref. No.: 95045090



Sr No.: 2002 : DIFFERENTIAL VALVE ASSLY. H.M.T. STD
Sr No.: 2002-A : O/S. (10,20,30,40,50,60)
Ref. No.: 2581030090



Sr No.: 2003 : INNER CIRCUIT VALVE ASSLY. H. M. T. STD
Sr No.: 2003-A : O/S. (10,20,30,40)
Ref. No.: 95810590



Sr No.: 2004 : OUTER CIRCUIT VALVE ASSLY. H. M. T. STD
Sr No.: 2004-A : O/S. (10,20,30,40)
Ref. No.: 95810390



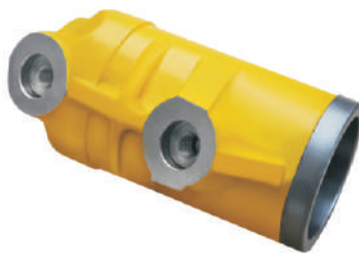
Sr No.: 2005 : SAFETY VALVE ASSLY. H.M.T. 5511/5911
Ref. No.: 67118018



Sr No.: 2013 : REDUCTION VALVE BOLT
Ref. No.: 95814690



Sr No.: 2014 : RAM CYLINDER HMT-2511 { 80.00 MM }
Ref. No.: 95802190



Sr No.: 2014-A : RAM CYLINDER HMT-3522 { 82.50 MM }
Ref. No.: 95802590



Sr No.: 2014-B : RAM CYLINDER WITH PISTON HMT-2511
{ 80.00 MM }
Ref. No.:



Sr No.: 2014-C : RAM CYLINDER WITH PISTON HMT-3522
{ 82.50 MM }
Ref. No.:



Sr No.: 2015 : SAFETY VALVE ASSLY. 2511/3511
Ref. No.: 95484590



Sr No.: 2023 : OVER LOAD VALVE ASSLY. H.M.T.
{ 145mm LENGTH }
Ref. No.:



Sr No.: 2024 : OVER LOAD VALVE ASSLY. H.M.T.
{ 115mm LENGTH }
Ref. No.: 55114621.9



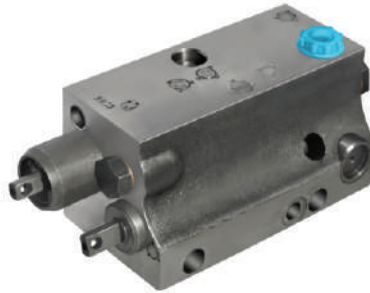
Sr No.: 2025 : RAM CYLINDER PISTON { 80.00 MM } STD
Sr No.: 2026 : O/S. (10,20,30,40,50,60)
Ref. No.: 958025.9



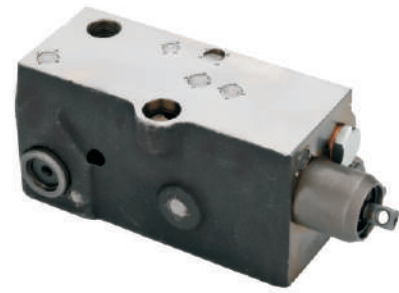
Sr No.: 2027 : RAM CYLINDER PISTON { 82.50 MM } STD
Sr No.: 2028 : O/S. (10,20,30,40,50,60)
Ref. No.: 958025.9



Sr No.: 2029 : TIMING GEAR SHAFT H.M.T.
Ref. No.: 95041290



Sr No.: 2030 : DISTRIBUTOR ASSLY. H.M.T. 2511/3511
Ref. No.: 25810000



Sr No.: 2030-A : HYD. DISTRIBUTOR ASSLY. HMT-5911
Ref. No.: 40118807



Sr No.: 2031 : RAM CYLINDER {90MM} HMT 5911
Ref. No.:



Sr No.: 2031-A : RAM CYLINDER WITH PISTON {90MM}
HMT-5911
Ref. No.:



Sr No.: 2032 : RAM CYLINDER PISTON HMT-5911 STD {90mm}
Sr No.: 2032-A : O/S. (10, 20, 30)
Ref. No.:



Sr No.: 2033 : HYD. LIFT DISTRIBUTOR REPAIR KIT
Ref. No.:

INTER (MAHINDRA) TRACTOR PARTS



Sr No.: 3002 : HYD. LIFT SPEED CONTROL PISTON STD
Sr No.: 3003 : O/S.
Ref. No.: 3045105R1



Sr No.: 3004 : DIFFERENTIAL SHAFT STD (Set of 4 Pcs)
Sr No.: 3005 : O/S. (10,20,30,40,50)
Ref. No.: 704707R2



Sr No.: 3009 : ISOLATOR VALVE ASSLY.
Ref. No.: 3045102R21



Sr No.: 3010 : SPEED CONTROL VALVE ASSLY.
Ref. No.: 3045103R11



Sr No.: 3012 : STEERING MAIN NUT ASSLY. "XLO" MODEL
Ref. No.: N. P. N.



Sr No.: 3014 : CONTROL VALVE HEAD PLATE WITH
SPEED CONTROL PISTON ASSLY. B-275
Ref. No.: 3069235R91



Sr No.: 3017 : REGULATOR VALVE ASSLY. { LOCK TYPE }
Ref. No.: 751563R91



Sr No.: 3019 : FLOW CONTROL VALVE SEAT
Ref. No.: 751562R1



Sr No.: 3031 : SPOOL LOWERING ASSLY. INTER
Ref. No.: 3049142R95



Sr No.: 3032 : SPOOL & SLEEVE ASSLY. INTER
Ref. No.: 3049088R9



Sr No.: 3033 : SPOOL & SLEEVE PLUNGER ONLY STD INTER
Sr No.: 3034 : O/S. (10,20,30,40)
Ref. No.: N. P. N.



Sr No.: 3046 : SPOOL & SLEEVE ASSLY. INTER 585 DI
{ 60 HP } (14 HOLE)
Ref. No.: 000051153D01



Sr No.: 3046-A : SPOOL & SLEEVE ASSLY. INTER 585 DI
{ 60 HP } (16 HOLE)

Ref. No.:



Sr No.: 3046-B : SPOOL & SLEEVE ASSLY. INTER 585 DI
{ 60 HP } (19 HOLE)

Ref. No.:



Sr No.: 3048 : REGULATOR VALVE ASSLY. L/M. { LOCK TYPE }

Ref. No.:



Sr No.: 3051 : COMPENSATOR SPOOL & SLEEVE 585 DI L/M.
Sr No.: 3051-A : O/S.

Ref. No.: 000050875D01



Sr No.: 3053 : STEERING MAIN NUT ASSLY. { ZF MODEL }

Ref. No.:



Sr No.: 3055 : HYD. LIFT REPAIR MINOR KIT

Ref. No.:



Sr No.: 3055-A : HYD. LIFT REPAIR KIT INTER 585 DI L/M.

Ref. No.:



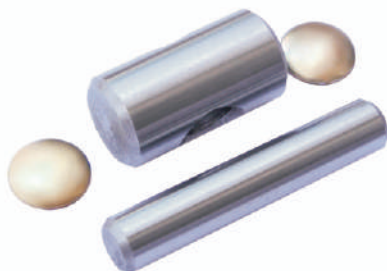
Sr No.: 3059 : HYD. PLATE BOLT SEALING WASHER BIG

Ref. No.: 704337R1



Sr No.: 3060 : HYD. PLATE BOLT SEALING WASHER SMALL

Ref. No.:



Sr No.: 3063 : GEAR SHIFTER LEVER PIN KIT INTER

Ref. No.:



Sr No.: 3064 : HYD. LIFT NON RETURN VALVE SEAT
N/M. SHORT

Ref. No.:



Sr No.: 3065 : NON RETURN VALVE SEAT N/M. LONG

Ref. No.: N. P. N.

INTER (MAHINDRA) TRACTOR PARTS



Sr No.: 3066 : RAM CYLINDER PISTON { 1 GROOVE } STD { 76MM }
Sr No.: 3066-A : O/S (10,20,30,40)
Ref. No.: 3044276R92



Sr No.: 3067 : RAM CYLINDER PISTON { 3 GROOVE } STD { 75.64MM }
Sr No.: 3067-A : O/S (10,20,30,40)
Ref. No.: 3044376R93



Sr No.: 3068 : RAM CYLINDER PISTON 585 DI L/M. STD { 85MM }
Sr No.: 3068-A : O/S. (10,20,30,40) { HIGH TECH MODEL }
Ref. No.: 005554406R1



Sr No.: 3069 : RAM CYLINDER PISTON SPRING KIT
Ref. No.:



Sr No.: 3070 : RAM CYLINDER { 76MM } INTER { 40 HP }
Ref. No.: 3044434R1
Sr No.: 3070-A : RAM CYLINDER { 85MM } INTER { 60 HP }



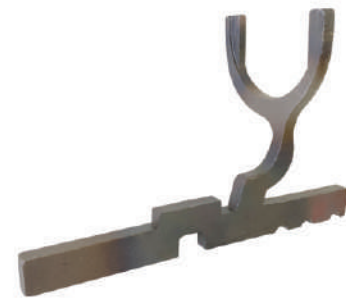
Sr No.: 3071 : CONTROL VALVE HEAD PLATE WITH PISTON ASSLY. { 60 HP } (GRAY COLOR)
Ref. No.:



Sr No.: 3072 : CONTROL VALVE HEAD PLATE WITH PISTON ASSLY. { 40 HP } (ORANGE COLOR)
Ref. No.:



Sr No.: 3073 : RAM CYLINDER PISTON YUVRAJ STD { 75.58 MM }
Sr No.: 3073-A : O/S. (10,20,30,40) Ref. No.:



Sr No.: 3074 : GEAR FORK (1ST & REVERSE) BHOOMIPUTRA INTER
Ref. No.:



Sr No.: 3075 : GEAR FORK (2ND & 3RD SPEED) BHOOMIPUTRA INTER
Ref. No.:



Sr No.: 3076 : GEAR FORK (4TH SPEED) BHOOMI PUTRA INTER
Ref. No.:



Sr No.: 3077 : CONTROL HEAD PLATE COMPLETE ASSLY. 60 HP.
Ref. No.: 007212042B91



Sr No.: 3078 : COMPENSATOR SPOOL & SLEEVE (YUVO MODEL)
Ref. No.: 007205610C1, 007204976C1



Sr No.: 4008 : PUSH GUIDE { VALVE TAPPET }
Ref. No.: 860007



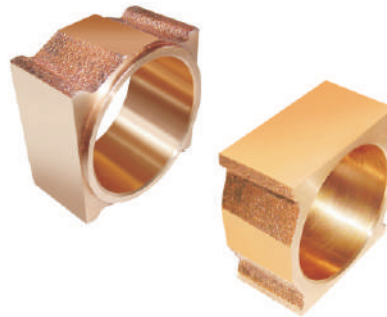
Sr No.: 4010 : OIL ASSLY. SHAFT P3, P6 { WITH GROOVE }
Ref. No.: 750001



Sr No.: 4010A : OIL ASSLY. SHAFT P3, P6 { WITHOUT GROOVE }
Ref. No.: 750001



Sr No.: 4011 : CONTROL VALVE SQUARE HEAD PIN
Ref. No.: 180937M91



Sr No.: 4016 : CAM BLOCK BUSH SETS BRASS
Ref. No.: 180924/180925M2



Sr No.: 4016-A : CAM BLOCK BUSH BRASS { COLLER TYPE }
Ref. No.: 180924M2



Sr No.: 4016-B : CAM BLOCK BUSH { WITHOUT COLLER }
Ref. No.: 180925M2



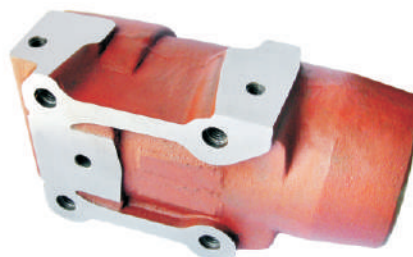
Sr No.: 4017 : OSCILLATOR BODY MF-1035
Ref. No.: 182002M1



Sr No.: 4017-A : OSCILLATOR BODY WITH LINK ASSLY.
MF-1035
Ref. No.:



Sr No.: 4018 : DRAFT CONTROL ROD MF-1035
Ref. No.: 190855M1

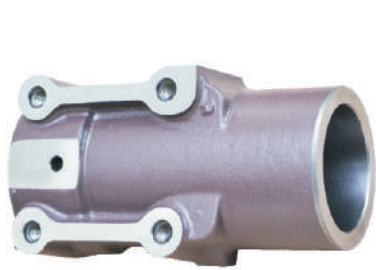


Sr No.: 4019 : HYD. LIFT RAM CYLINDER MF-1035 { 76 MM }
Ref. No.: 190859M1



Sr No.: 4019-A : RAM CYLINDER WITH PISTON MF-1035
(RED) { 76 MM }
Ref. No.:

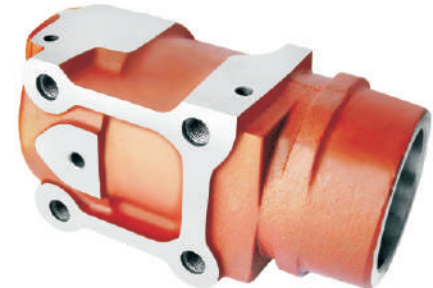
MASSEY FERGUSON TRACTOR PARTS



Sr No.: 4019-B : RAM CYLINDER {76 MM} (GRAY) S.G. IRON MF-1035
Ref. No.: 190859M1



Sr No.: 4019-C : RAM CYLINDER WITH PISTON { 76 MM } (GRAY) S.G. IRON MF-1035
Ref. No.:



Sr No.: 4020 : HYD. LIFT RAM CYLINDER MF-245 { 79 MM }
Ref. No.: 897560M3



Sr No.: 4020-A : RAM CYLINDER WITH PISTON 1 GROOVE MF-245 { 79 MM }
Ref. No.:



Sr No.: 4020-B : RAM CYLINDER WITH PISTON 3 GROOVE MF-245 { 79 MM }
Ref. No.:



Sr No.: 4022 : GEAR FORK BIG MF-1035 { INVESTMENT CASTING }
Ref. No.: 180437M1



Sr No.: 4023 : GEAR FORK SMALL MF-1035 / 245 { INVESTMENT CASTING }
Ref. No.: 180443M1



Sr No.: 4024 : HYD. PUMP CONTROL VALVE GUIDE SQUARE
Ref. No.: 1862576M2



Sr No.: 4025 : GEAR FORK BIG { INVESTMENT CASTING } MF-245
Ref. No.: 1860773M1



Sr No.: 4027 : HYD. PUMP OSCILLATOR BODY MF-245
Ref. No.: 1869826M93



Sr No.: 4028 : CONTROL VALVE MF - 1035 { Special Lapping Finish }
Ref. No.: 189427M91



Sr No.: 4030-B : CONTROL VALVE ASSLY. O/M [ROUND ROD] MF-245 { WITH "O" RING & ROLLER & PIN } 198 MM
Ref. No.: 1870763M92



SrNo.: 4030-C : CONTROL VALVE ASSLY. N/M [SQUARE ROD]
MF-245 { WITH "O" RING & ROLLER & PIN } 198 MM
Ref. No.: 1681789M91



Sr No.: 4031-A : CONTROL VALVE { HARD } MF-135 MARK II
{ WITH ROLLER & PIN } 217 MM
Ref. No.: 897507M92



Sr No.: 4032 : RELIEF VALVE MF-1035 { 2300 - 2800 PSI }
COLOR CODE : SELF COLOR
Ref. No.: 828927M91



Sr No.: 4032-A : RELIEF VALVE (SINGLE BODY) MF-1035
{ 2300 TO 2800 PSI } HEX TYPE
Ref. No.:



Sr No.: 4033 : RELIEF VALVE SMALL MF-1035
{ 2300 - 2800 PSI }
Ref. No.: 190537M91



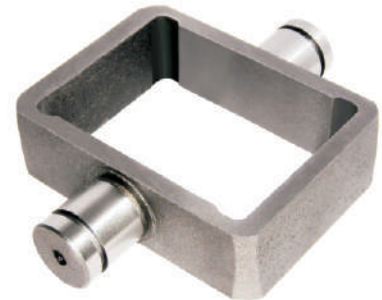
Sr No.: 4035 : RELIEF VALVE MF - 245 { 2800-3200 PSI }
COLOR CODE : BLACK
Ref. No.: 884747M92



Sr No.: 4035-B : RELIEF VALVE { 2500-3000 PSI }
COLOR CODE : YELLOW
Ref. No.: 883402M92



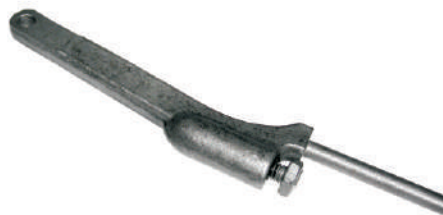
Sr No.: 4035-C : RELIEF VALVE { 2700-3000 PSI }
MF-5245, 9000, 9500 NEW MODEL
Ref. No.:



Sr No.: 4036-D : SQUARE PISTON MF-1035 STD { S.G. IRON }
Ref. No.: 190799M1



Sr No.: 4037 : VALVE CHAMBER FULL KIT STD MF-1035
Sr No.: 4038 : VALVE CHAMBER FULL KIT O/S.
Ref. No.:



Sr No.: 4040 : DRAFT CONTROL ROD WITH BOLT MF-245
Ref. No.: 898124M1/898128M1



Sr No.: 4042 : VALVE CHAMBER BODY BARE MF-1035
(5 HOLE) 23 MM
Ref. No.: 184471M1

MASSEY FERGUSON TRACTOR PARTS



Sr No.: 4042-A : VALVE CHAMBER BODY WITH VALVE ASSLY.
MF-1035 (5 HOLE) 23 MM
Ref. No.: 184471M1



Sr No.: 4043 : VALVE CHAMBER BODY BARE MF-135
(4 HOLES) 25 MM
Ref. No.: 897491M91



Sr No.: 4043-A : VALVE CHAMBER BODY WITH VALVE ASSLY.
MF-135 (4 HOLES) 25 MM
Ref. No.: 897491M91



Sr No.: 4044 : VALVE CHAMBER BODY BARE MF-245
(4 HOLES) 25 MM
Ref. No.: 1868435M3



Sr No.: 4044-A : VALVE CHAMBER BODY WITH VALVE ASSLY.
MF-245 (4 HOLES) 25 MM
Ref. No.: 1868435M3



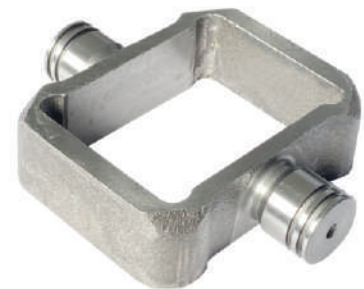
Sr No.: 4045 : VALVE CHAMBER FULL KIT STD MF-245
Ref. No.:



Sr No.: 4047 : SQUARE PISTON MF- 135 { S.G. IRON }
Ref. No.: 897492M1



Sr No.: 4049 : SQUARE PISTON MF-245 / MF-241
S. G. IRON (FULL PIN)
Ref. No.: 1860038M1



Sr No.: 4049-A : SQUARE PISTON MF-245 / MF-241 (25 MM)
S. G. IRON (DOUBLE RING GROOVE)
Ref. No.:



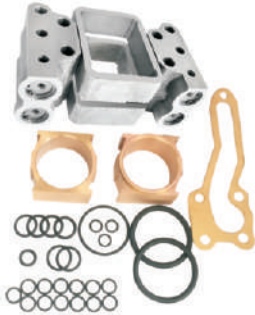
Sr No.: 4050 : RAM CYLINDER PISTON STD MF-1035 (76 MM)
Sr No.: 4051 : O/S. (10, 20, 30, 40, 50) { 4 GROOVE }
Ref. No.: 713288M91



Sr No.: 4050-A : RAM CYLINDER PISTON STD MF-1035
(76 MM) ("O" RING GROOVE BIG)
Ref. No.: 713288M91



Sr No.: 4052-B : MINOR KIT MF-1035 (23 MM) { S. G. IRON }
Ref. No.: 1810858M1



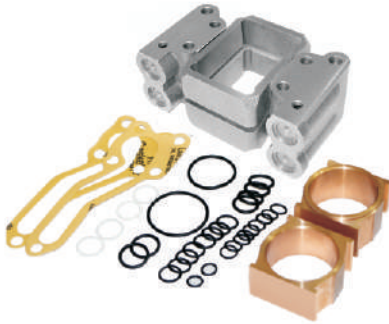
Sr No.: 4052-C : HYD. PUMP MAJOR KIT WITH CAM BLOCK BUSH & "O" RING KIT MF-1035 MARK I
Ref. No.: 1810858M1



Sr No.: 4052-D : MINOR KIT MF-1035 (23 MM) DOUBLE PISTON RINGS
Ref. No.:



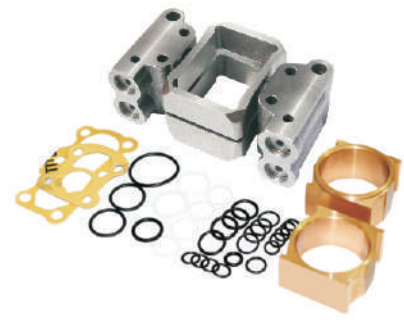
Sr No.: 4053-B : MINOR KIT MF-135 (25 MM) {S. G. IRON}
Ref. No.: 1810859M1



Sr No.: 4053-C : HYD. PUMP MAJOR KIT WITH CAM BLOCK BUSH & "O" RING KIT MF-135 MARK II
Ref. No.: 1810859M1



Sr No.: 4054-B : MINOR KIT MF-245 / MF-241 (25 MM) {S. G. IRON}
Ref. No.: 1810860M93



Sr No.: 4054-C : HYD. PUMP MAJOR KIT WITH CAM BLOCK BUSH & "O" RING KIT MF-245 MARK III
Ref. No.:



Sr No.: 4054-D : HYD. PUMP MINOR KIT MF-245 / 241 (25MM) DOUBLE PISTON RINGS
Ref. No.:



Sr No.: 4057 : HYD. PUMP VALVE CHAMBER PLUG MF-1035
Ref. No.: 181999M1



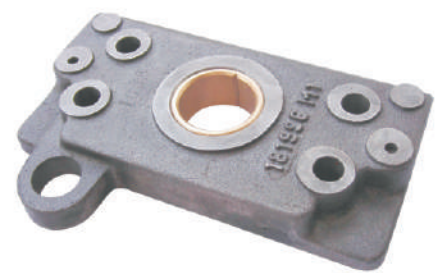
Sr No.: 4059 : HYD. PUMP VALVE CHAMBER PLUG MF-245
Ref. No.: 1868741M1



Sr No.: 4060 : CHAMBER VALVE PAIR CUT TYPE STD
Sr No.: 4060-A : CHAMBER VALVE PAIR CUT TYPE O/S.
Ref. No.:



Sr No.: 4061 : HYD. PUMP OSCILATOR BODY MF-135
Ref. No.: 897496M91



Sr No.: 4062 : HYD. PUMP PLATE (SMALL) FRONT WITH BUSH & SCREW MF-1035
Ref. No.: 181996M1 / 182006M91

MASSEY FERGUSON TRACTOR PARTS



Sr No.: 4063 : HYD. PUMP PLATE (BIG) REAR
WITH BUSH & SCREW MF-1035
Ref. No.: 181995M3 / 182005M93



Sr No.: 4064 : HYD. PUMP OSCILLATOR LINK MF-1035
Ref. No.: 180934M1



Sr No.: 4065 : HYD. PUMP CONTROL VALVE LEVER N/M.
MF-1035
Ref. No.: 189370M91



Sr No.: 4066 : HYD. PUMP CAM-SHAFT { 10 SPLINES }
MF-1035
Ref. No.: 181994M1



Sr No.: 4067 : GEAR FORK MEDIUM { INVESTMENT CASTING }
MF-245
Ref. No.: 1873532M1



Sr No.: 4068 : HYD. PUMP CAM SHAFT { 21 SPLINES } MF-DI
Ref. No.: 1868544M92



Sr No.: 4069 : HYD. PUMP CAM SHAFT { 10 SPLINES }
MF-135
Ref. No.: 899154M91



Sr No.: 4070 : HYD. PUMP CAM SHAFT { 21 SPLINES }
MF-245 (2 GROOVE)
Ref. No.: 1868544M02



Sr No.: 4071 : CONTROL VALVE ASSLY. MARK II (219 MM)
WITH 'O' RING MF-135
Ref. No.: 1862486M96



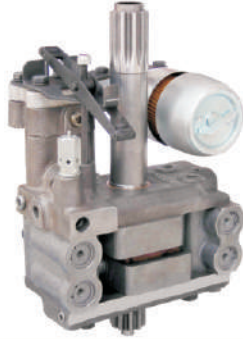
Sr No.: 4071-B : CONTROL VALVE ASSLY. MARK II (219 MM)
WITH TEMPLATE & GASKET
Ref. No.:



Sr No.: 4076 : CONTROL VALVE MF-1035 NEW DESIGN
{ WITH 'O' RING }
Ref. No.: 189427M91 Replace



Sr No.: 4077 : CONTROL VALVE ASSLY. MF-240 (190 MM)
{ SHORT LENGTH } { WITH "O" RING & ROLLER & PIN }
Ref. No.: 3611085M91



SrNo.: 4079 : HYD. PUMP ASSLY. MF-1035 (10 SPLINE)
(23MM)
Ref. No.: 184472M94



SrNo.: 4079-A : HYD. PUMP ASSLY. MF-DI. (21 SPLINE)
Ref. No.: 713916M92



Sr No.: 4080 : STEERING OUTER TUBE COLUMN
{ MOUTH } O/M. MF.
Ref. No.:



Sr No.: 4081 : STEERING OUTER TUBE COLUMN
{ MOUTH } N/M. MF.
Ref. No.:



Sr No.: 4082-A : HYD. PUMP PLATE BUSH (BI METAL)
Ref. No.: 1664491M1 / 1865012M1



Sr No.: 4083 : SQUARE PISTON RING (23 MM) MF-1035
STD { SET OF 4 PCS. }
Ref. No.: 190848M1 / 892604M1



Sr No.: 4085 : CONTROL VALVE PIN ROUND HEAD
(LOCK TYPE)
Ref. No.: 189364M91



Sr No.: 4086 : HYD. PUMP OSCILLATOR LINK SCREW
Ref. No.: 195568M1



Sr No.: 4087 : HYD. PUMP OSCILLATOR LINK PIN LONG
Ref. No.: 354187X1



Sr No.: 4088 : HYD. PUMP DRIVE RETAINER DISC MF-1035
Ref. No.: 180942M2



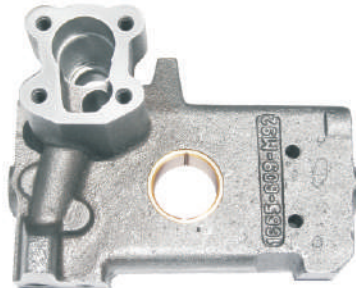
Sr No.: 4089 : HYD. PUMP CAM FLOWER MF-1035
Ref. No.: 180933M1



Sr No.: 4090 : PINION FLANCH { FOR 903249 BEARING }
Ref. No.: 184046M1



Sr No.: 4091 : HYD. PUMP PLATE (SMALL) FRONT
WITH BUSH MF-245
Ref. No.: 1665499M91



Sr No.: 4092 : HYD. PUMP PLATE (BIG) REAR WITH BUSH
RELIEF VALVE THREAD 9/16 UNF MF-245
Ref. No.: 1665609M92



Sr No.: 4093 : HYD. LIFT PLUNGER MF-1035
Sr No.: 4093-A : HYD. LIFT PLUNGER { M. M. THREAD }
Ref. No.: 182580M1



Sr No.: 4094 : HYD. LIFT CLEVIS { FORGING } MF-1035
Sr No.: 4094-A : CLEVIS [FORGING] MF-1035 { M. M. THREAD }
Ref. No.: 180972M2



Sr No.: 4095 : HYD. LIFT CLEVIS WITH PLUNGER
{ FORGING } MF-1035
Ref. No.: 180972M2/182580M1



Sr No.: 4095-A : HYD. LIFT YOKE WITH Zoola ASSLY. MF-1035
Sr No.: 4095-B : MM THREAD
Ref. No.:



Sr No.: 4096 : HYD. LIFT PLUNGER CUP ID-1.880"
MF-1035
Ref.No.: 182581M1



Sr No.: 4097 : HYD. PUMP CONTROL VALVE LEVER
GUIDE BRACKET
Ref. No.: 189368M01



Sr No.: 4098 : HYD. PUMP FILTER HOUSING { ALUMINUM }
MF-1035
Ref. No.: 189373M02



Sr No.: 4099 : HYD. PUMP FILTER COVER STEEL N/M.
MF-1035
Ref. No.: 189367M02



Sr No.: 4104 : HYD. LIFT HEAD LINK YOKE { JHOOLA }
Ref. No.: 180973M2



Sr No.: 4107 : HYD. LIFT PUMP DOWEL { PIN PUMP SUPPORT }
Ref. No.: 180905M01



Sr No.: 4109 : GEAR BALL RETAINER PLATE MF-245
Ref.No.: 1860761M01



Sr No.: 4110 : HYD. LIFT PUMP ASSLY. MF-245
(21 SPLINES) MARK III
Ref.No.: 1662693M93, 3761324M91



Sr No.: 4111 : HYD. PUMP BALANCING TUBE MF-245
Ref. No.: 1686740M01



Sr No.: 4112 : HYD. LIFT CONTROL CHECK NUT MF.
Ref. No.: 180979M02



Sr No.: 4113 : HYD. PUMP CONTROL VALVE LEVER STUD
WITH NUT
Ref.No.: 826760M01/182007M01



Sr No.: 4114 : HYD. PUMP CONTROL VALVE SPRING MF-1035
Ref. No.: 180940M01



Sr No.: 4115 : HYD. PUMP FILTER { STRAINER } MF-1035
Ref. No.: 185551M92



Sr No.: 4116 : HYD. PUMP FILTER BODY { CAP & BOWL }
MF-1035
Ref. No.: 185839M91/185555M01



Sr No.: 4117 : HYD. LIFT LINK SHAFT MF.
Ref. No.: 180997M1



Sr No.: 4118 : REAR DRIVE COUPLING MF-1035
Ref. No.: 880069M02 / 183088M1



Sr No.: 4118-A : REAR DRIVE COUPLING (SHORT TYPE)
Ref. No.: 1871924M1



Sr No.: 4119 : HYD. LIFT PLUNGER CUP ID-1.780"
MF-245
Ref. No.: 886351M01

MASSEY FERGUSON TRACTOR PARTS



Sr No.: 4120 : HYD. LIFT PLUNGER MF-245
Sr No.: 4120-A : PLUNGER MF-245 M.M. THREAD
Ref. No.: 886348M02



Sr No.: 4121 : HYD. LIFT PUMP DOWEL { PIN PUMP SUPPORT }
MF-245
Ref. No.: 898643M01



Sr No.: 4122 : RAM CYLINDER PISTON MF-245 L/M.
{ SINGLE GROOVE } { 79 MM } STD
Sr No.: 4122-A : O/S. (10,20,30,40) Ref. No.: 1665737M91



Sr No.: 4123 : RAM CYLINDER PISTON MF-245
{ THREE GROOVE } { 79 MM } STD
Sr No.: 4123-A : O/S. (10,20,30,40) Ref. No.: 1665737M91



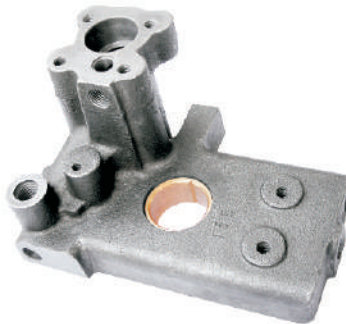
Sr No.: 4124 : SQUARE PISTON RING { 25 MM } MF-245/135
{ SET OF 4 PCS. }
Ref. No.: 897493M01



Sr No.: 4126 : HYD. LIFT ARM SHAFT BUSH { SINTERED } MF.
{ SET OF 4 PCS. }
Ref. No.: 181018M01



Sr No.: 4129 : HYD. PUMP PLATE (SMALL) FRONT
WITH BUSH & SCREW MF-135
Ref. No.: 897487M91



Sr No.: 4130 : HYD. PUMP PLATE (BIG) REAR
WITH BUSH & SCREW BIG MF-135
Ref. No.: 897488M91



Sr No.: 4131 : HYD. PUMP ASSLY. MF-135 MARK II
(10 SPLINE)
Ref. No.: 899205M1



Sr No.: 4132 : HYD. LIFT ARM SHAFT BUSH { SINTERED }
MF-245
Ref. No.: 1870934M01



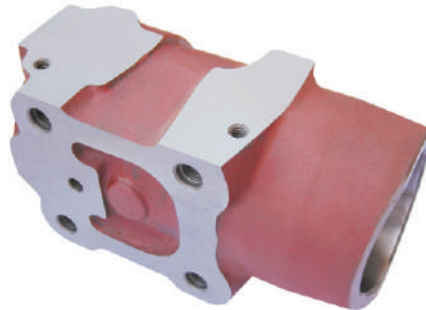
Sr No.: 4134 : HYD. PUMP FILTER HOUSING ALUMINIUM
MF-245
Ref. No.: 1870072M02



Sr No.: 4135 : HYD. LIFT RAM CYLINDER PISTON
{ 85.50 MM } { 3 GROOVE }
Ref. No.: 1665738M91 / 897595M91



Sr No.: 4135-A : HYD. LIFT RAM CYLINDER PISTON
{ 85.50 MM } { 1 GROOVE }
Ref. No.: 1665738M91 / 897595M91



Sr No.: 4136 : HYD. LIFT RAM CYLINDER MF. { 85.50 MM }
Ref. No.: 1671082M1 / 897594M2



Sr No.: 4137 : HYD. PUMP CAM SHAFT { 21 SPLINES }
LONG END MF-399
Ref. No.: 3613194M1



Sr No.: 4138 : HYD. PUMP CAM SHAFT { 21 LONG SPLINES }
MF-285 (3 GROOVE TYPE)
Ref. No.: 1871781M92



Sr No.: 4138-A : HYD. PUMP CAM SHAFT { 21 SPLINES }
SHORT SPLINES
Ref. No.:



Sr No.: 4139 : HYD. PUMP CAM SHAFT { 10 SPLINES }
DOUBLE BEARING
Ref. No.: 899915M92



Sr No.: 4139-A : HYD PUMP CAM SHAFT { 10 SPLINES }
2-GROOVE MF
Ref. No.:



Sr No.: 4140 : HYD. PUMP PLATE ELEN SCREW BIG
Sr No.: 4141 : HYD. PUMP PLATE ELEN SCREW SMALL
Ref. No.:



Sr No.: 4142 : HYD. PUMP PLATE BOLT { EN-19 }
{ SET OF 4 PCS. }
Ref. No.:



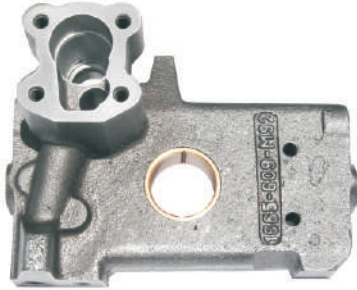
Sr No.: 4143 : HYD. PUMP CAM SHAFT { 10 / 21 SPLINES }
MF-241
Ref.No.:



Sr No.: 4143-A : HYD. PUMP CAM SHAFT { 10 / 10 SPLINES }
MF-241 (LONG TYPE)
Ref.No.:



Sr No.: 4144 : HYD. LIFT TOP LINK BUSH { SET OF 2 PCS. }
FOR ZULLA
Ref. No.: 180974M01



Sr No.: 4145 : HYD. PUMP PLATE (BIG) REAR WITH BUSH
THREAD SIZE 3/8" BSW MF-285
Ref. No.: 1665610M1



Sr No.: 4146 : HYD. PUMP PLATE (BIG) REAR
WITH BUSH & SCREW MF-241
Ref. No.:



Sr No.: 4147 : HYD. PUMP PLATE (SMALL) FRONT
WITH BUSH & SCREW MF-241
Ref. No.:



Sr No.: 4151 : PINION FLANCH MF-245
Ref. No.:



Sr No.: 4154 : CLUTCH HUB MF-245
Ref. No.: 886727M01



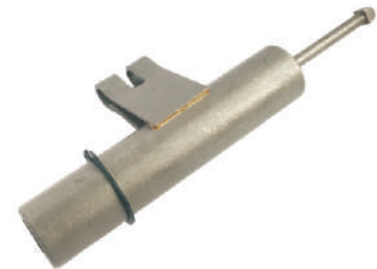
Sr No.: 4158 : HYD. LIFT CLEVIS YOKE MF-285
Ref. No.: 1863389M1



Sr No.: 4159-B : HYD. PUMP MINOR KIT { S.G. IRON }
J-SERIES { 5 HOLE } (23 MM)
Ref. No.:



Sr No.: 4160 : HYD. PUMP OSCILATOR BODY MF-241
Ref. No.:



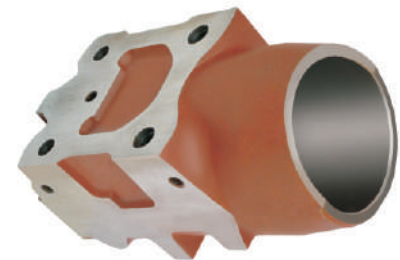
Sr No.: 4160-A : HYD. PUMP OSCILATOR BODY WITH ASSLY.
MF-241
Ref. No.:



Sr No.: 4161 : HYD. PUMP ASSLY. MF-241 (10 / 10 SPLINE)
Sr No.: 4161-A : HYD. PUMP ASSLY. MF-241 (10 / 21 SPLINE)
Sr No.: 4161-B : HYD. PUMP ASSLY. MF-241 (21 / 21 SPLINE)



Sr No.: 4162 : RAM CYLINDER PISTON { SINGLE GROOVE } STD
MF-241 { 76MM }
Ref. No.: 4246284M92



Sr No.: 4163 : HYD. LIFT RAM CYLINDER MF { 93 MM }
(GRADED CASTING)
Ref. No.: 1693913M1/3599859M1



Sr No.: 4163-A : RAM CYLINDER WITH PISTON { 93 MM }
(GRADED CASTING)
Ref. No.:



Sr No.: 4163-B : RAM CYLINDER (93 MM) S.G. IRON
(GRAY COLOR)
Ref. No.: 1693913M1/3599859M1



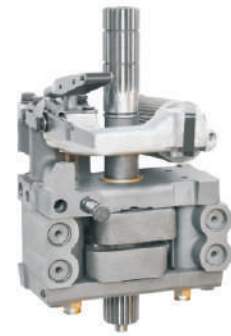
Sr No.: 4163-C : RAM CYLINDER WITH PISTON { 93 MM }
S.G. IRON (GRAY COLOR)
Ref. No.:



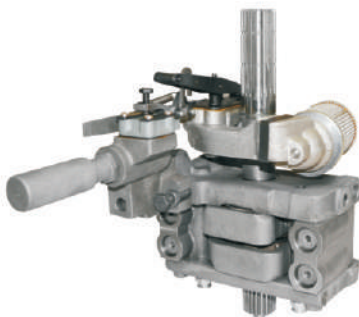
Sr No.: 4164 : HYD. LIFT PUMP ASSLY. MF-240
{ CURVE TYPE LEVER } { PRESSURE 2300-2800 P.S.I. }
Ref. No.: 3761330K91



Sr No.: 4165 : HYD. LIFT PUMP ASSLY. MF-240
{ CURVE TYPE LEVER } { PRESSURE 2800-3200 P.S.I. }
Ref. No.: 3761332K91



Sr No.: 4166 : HYD. LIFT PUMP ASSLY. MF-285
{ WITHOUT PRESSURE CONTROL UNIT }
Ref. No.: 1683301M92



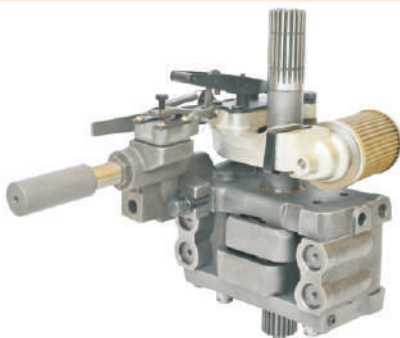
Sr No.: 4166-A : HYD. LIFT PUMP ASSLY. MF-285
WITH PRESSURE CONTROL UNIT (3 GROOVE)
Ref. No.: 1683301M92



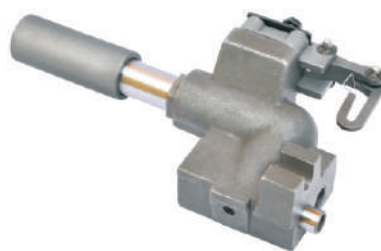
Sr No.: 4167 : RELIEF VALVE ASSLY HEX BODY MF-399
Ref. No.: 3401834M91



Sr No.: 4168 : HYD. PUMP NON RETURN VALVE MF-245
Ref. No.: 1870811M01



Sr No.: 4169 : HYD. LIFT PUMP ASSLY. WITH PRESSURE
CONTROL UNIT MF-245/240
Ref. No.: 1872449M96/1870995M92



Sr No.: 4170 : HYD. PUMP PRESSURE CONTROL UNIT
ASSLY. MF.
Ref. No.: 1680061M91



Sr No.: 4171 : HYD. LIFT STAND PIPE LENGTH (249 MM)
WITH RING FITTING
Ref. No.: 1869119M1

MASSEY FERGUSON TRACTOR PARTS



Sr No.: 4172 : HYD. LIFT STAND PIPE LENGTH (317 MM)
WITH RING FITTING
Ref. No.: 898229M1



Sr No.: 4173 : HYD. PUMP CONTROL VALVE LEVER
MF-135
Ref. No.: 897516M91



Sr No.: 4174 : HYD. PUMP CONTROL VALVE LEVER
MF-245
Ref. No.: 1868471M91



Sr No.: 4175 : HYD. PUMP CONTROL VALVE LEVER
{ CURVE TYPE } MF-245
Ref. No.: 3610175M91



Sr No.: 4176 : HYD. PUMP FILTER { STRAINER } MF-245
Ref. No.: 1660715M92/1687042M91



Sr No.: 4177 : HYD. PUMP FILTER HOUSING COVER STEEL
MF-245
Ref. No.: 1870807M1



Sr No.: 4178 : HYD. PUMP FILTER HOUSING COVER STEEL
{ N/M } MF-245
Ref. No.: 3599748M91



Sr No.: 4179 : RAM CYLINDER PISTON RING { SET OF 3 PCS. }
{ 76 MM } MF-1035
Ref. No.: 184447M01 / 830741M91



Sr No.: 4180 : RAM CYLINDER PISTON RING { SET OF 3 PCS. }
{ 79 MM } MF-245
Ref. No.: 897564M01



Sr No.: 4181 : HYD. LIFT POSITION CONTROL LINK ASSLY.
MF-245
Ref. No.: 1661918M91



Sr No.: 4182 : HYD. LIFT DRAFT CONTROL LINK ASSLY.
WITH DRAFT CONTROL ROD MF-245
Ref. No.: 1660324M91



Sr No.: 4183 : RAM CYLINDER PISTON { 93 MM } STD
Sr No.: 4183-A : O/S. (10,20,30) (1 GROOVE)
Ref. No.:



Sr No.: 4183-B : RAM CYLINDER PISTON { 93 MM } STD
Sr No.: 4183-C : O/S. (10,20,30) (3 GROOVE)
Ref. No.:



Sr No.: 4183-D : RAM CYLINDER PISTON { 93 MM } STD
(2 GROOVE) MF
Ref. No.:



Sr No.: 4184 : HYD. LIFT PLUNGER SPRING MF.
Ref. No.: 182582M1 / 180998M1 / 1661755M2



Sr No.: 4185 : HYD. LIFT CLEVIS WITH LINK ASSLY. MF-245
Sr No.: 4185-A : HYD. LIFT CLEVIS WITH LINK ASSLY. MF-1035
Ref. No.:



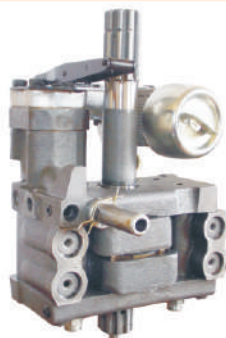
Sr No.: 4186 : HYD. LIFT CLEVIS ASSLY. MF-245, 240
Sr No.: 4186-A : HYD. LIFT CLEVIS ASSLY. MF-1035
Ref. No.:



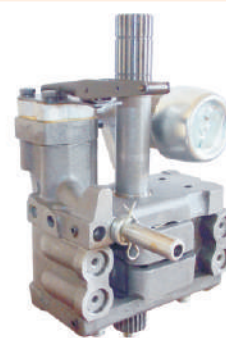
Sr No.: 4187 : HYD. LIFT CLEVIS ASSLY. MF-285
Ref. No.:



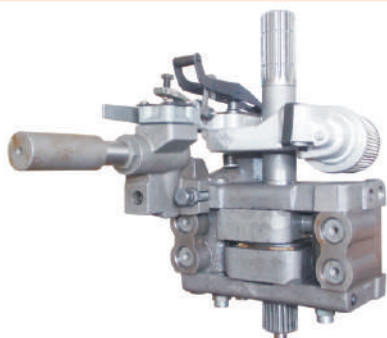
Sr No.: 4188 : HYD. PUMP WASHER FOR PLATE MF-245
Ref. No.: 1664589M1



Sr No.: 4189 : HYD. LIFT PUMP ASSLY. MARK-II {10 SPLINES}
EXTRA DISTANCE PLATE FITTED PRESSURE 2800-3200 PSI
Ref. No.: 1684582M92 / 1869615M91



Sr No.: 4190 : HYD. LIFT PUMP ASSLY. MARK-II {21 SPLINES}
EXTRA DISTANCE PLATE FITTED PRESSURE 2800-3200 PSI
Ref. No.: 1684583M92



Sr No.: 4191 : HYD. LIFT PUMP ASSLY. WITH PRESSURE
CONTROL UNIT {21 SPLINES} MARK III (CURVE TYPE LEVER)
Ref. No.: 3773700M92



Sr No.: 4192 : GEAR FORK BIG MF-241
Ref. No.: 4245958M93



Sr No.: 4193 : HYD. LIFT ARM SHAFT (THREE HOLE)
{ 37 SPLINES }
Ref. No.: 184359M2 \ 184359M91 \ 353558X1

MASSEY FERGUSON TRACTOR PARTS



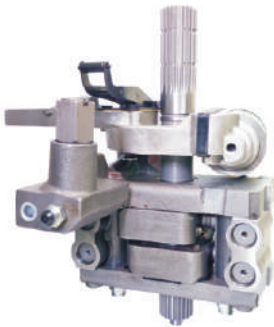
Sr No.: 4193-A : HYD. LIFT ARM SHAFT { 51 SPLINES }
MF-240, 245
Ref. No.: 899149M3 \ 897567M3



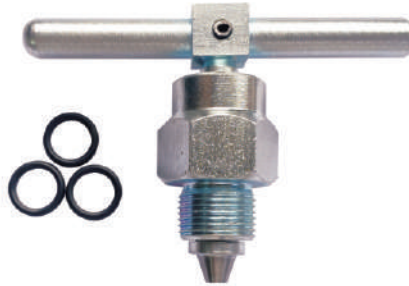
Sr No.: 4194 : HYD. LIFT RAM ROD MF-1035
Ref. No.: 191211M01



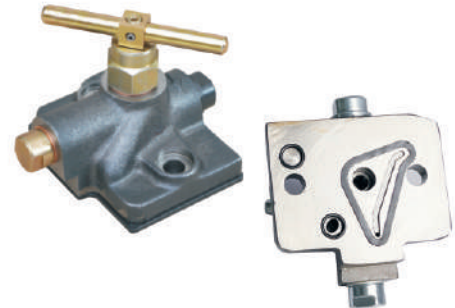
Sr No.: 4195 : HYDRAULIC LIFT PUMP ASSLY. MF-399
(CURVE TYPE LEVER)
Ref. No.: 3701159M91



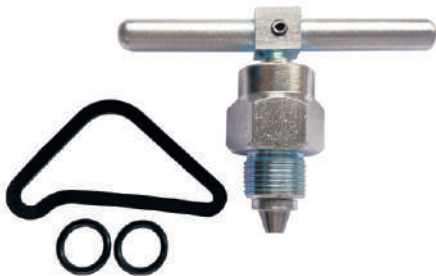
Sr No.: 4195-A : HYD. LIFT PUMP ASSLY. (CURVE TYPE LEVER)
WITH HEX TYPE RELIEF VALVE
Ref. No.: 4200076M91



Sr No.: 4196-A : TRANSPORT LOCK VALVE HALF KIT
FOR ALL MODEL
Ref. No.:



Sr No.: 4196-B : TRANSPORT LOCK VALVE ASSLY.
TAFE ALL NEW MODEL
Ref. No.:



Sr No.: 4196-C : TRANSPORT LOCK VALVE HALF KIT
(NEW MODEL)
Ref. No.:



Sr No.: 4197 : HYD. CAM ASSY (HYDRAULIC LINKAGE LEVER)
MF-245, 240
Ref. No.: 1661547M92



Sr No.: 4198 : HYD PUMP SAFETY VALVE SOLID MF
(270-280 BAR)
Ref. No.:



Sr No.: 4199 : STAND PIPE [304 MM LENGTH]
Sr No.: 4200 : [311 MM LENGTH]
Sr No.: 4201 : [330 MM LENGTH] **Ref. No.:** 190856M1



Sr No.: 4202 : HYD. LIFT POSITION CONTROL LINK ASSLY
MF-1035
Ref. No.: 180993M91



Sr No.: 4203 : HYD. LIFT DRAFT CONTROL LINK ASSLY.
MF-1035
Ref. No.: 180983M91



Sr No.: 4204 : HYD. LIFT POSITION CONTROL FORK MF-1035
Ref. No.: 190885M91



Sr No.: 4205 : HYD. LIFT DRAFT CONTROL FORK MF-1035
Ref. No.: 190884M91



Sr No.: 4206 : LIFT LEVER & CAM ASSY.
Ref. No.: 1869093M93



Sr No.: 4207 : LEVER SUPPORT BRACKET
Ref. No.: 1661617M91



Sr No.: 4208 : HYD. LINK LINKAGE LEVER
Ref. No.: 882514M91



Sr No.: 4209 : HYD. PUMP COUPLING { 21 SPLINES }
Ref. No.: 1868538M4 \ 1868538M1



Sr No.: 4210 : HYD. PUMP COUPLING { 10 SPLINES }
Ref. No.: 180926M1



Sr No.: 4211 : GEAR SHIFT LEVER CUP WITH CHECK NUT
MF-1035
Ref. No.: 827690M1



Sr No.: 4212 : GEAR SHIFT LEVER CUP WITH CHECK NUT
MF-241 BIG
Ref. No.:



Sr No.: 4215 : RELIEF VALVE CASTING SHROUD MF-399
{ CASTING BATTI }
Ref. No.:



Sr No.: 4215-A : RELIEF VALVE HEX BODY WITH
CASTING SHROUD MF-399
Ref. No.:



Sr No.: 4216 : RAM CYLINDER PISTON RING SET (79MM)
(WHITE TEFNOL & RUBBER RING) (SET OF 2 PCS)
Ref.No.: 3761478M1 \ 3761475M1

MASSEY FERGUSON TRACTOR PARTS



Sr No.: 4217 : RAM CYLINDER PISTON RING SET (85 MM)
(WHITE TEFNOL & RUBBER RING) (SET OF 2 PCS)
Ref. No.: 3761477M1 \ 3761474M1 \ 1665684M91



Sr No.: 4218 : RAM CYLINDER PISTON RING SET (93 MM)
(BLACK TEFNOL & RUBBER RING) (SET OF 2 PCS)
Ref. No.: 1693932M91



Sr No.: 4219 : RAM CYLINDER PISTON RING (85 MM)
STEEL (SET OF 3 PCS)
Ref. No.: 897597M1



Sr No.: 4220 : RAM CYLINDER PISTON RING (93 MM)
STEEL (SET OF 3 PCS)
Ref. No.:



Sr No.: 4221 : HYD. LIFT PUMP DOWEL & PIVOT
Ref. No.: 898937M1



Sr No.: 4222 : HYD. LIFT POSITION CONTROL LINK ASSLY.
MF-399
Ref. No.: 1690886M91



Sr No.: 4223 : HYD. LIFT DRAFT CONTROL LINK ASSLY WITH
DRAFT CONTROL ROD MF-399
Ref. No.: 1690884M91



Sr No.: 4224 : HYD. PUMP PRESSURE CONTROL
ALLUMINIUM BRACKET ASSY.
Ref. No.:



Sr No.: 4225 : HYD. LIFT HEAD QUADRANT ASSY. MF-1035
NEW MODEL
Ref. No.:



Sr No.: 4226 : GEAR BOX INPUT HOUSING 8 SPEED SINGLE CLUTCH
Ref. No.: 714447M1 \ 1860876M1 \ 1693837M1 \ 964903M91
1693833M91 \ 1860890M91



Sr No.: 4227 : GEAR BOX INPUT HOUSING MULTI POWER
RETAINER
Ref. No.: 1860889M1 \ 1885502M91



Sr No.: 4228 : VALVE TAPPET
Ref. No.: 740671M1 \ 31434163



Sr No.: 4229 : HYD. LIFT SIDE ARM (37 SPLINE)
Ref. No.: 713287M1 / 180910M1



Sr No.: 4230 : HYD. LIFT RAM ARM (42 SPLINE)
Ref. No.: 180970M2



Sr No.: 4231 : HYD. LIFT SELECTOR ASSY.
Ref. No.: 1696239M92



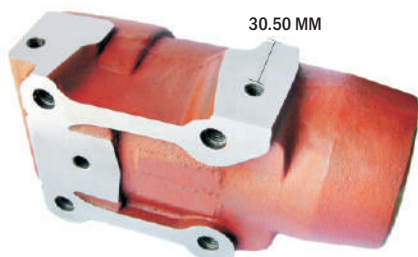
Sr No.: 4232 : HYD. RAM CYLINDER MM THREAD (83 MM)
IMT-560
Ref. No.: 56002371



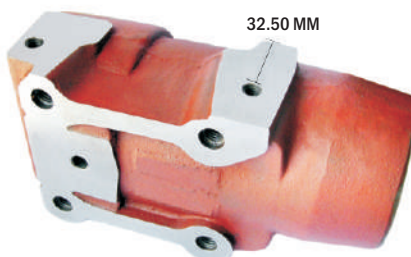
Sr No.: 4233 : RAM CYLINDER PISTON (3 GROOVE)
(83 MM) IMT-560
Ref. No.: 56002381



Sr No.: 4234 : HYD. RAM CYLINDER PISTON RING (83 MM)
IMT-560
Ref. No.: 56002382 \ 56002383



Sr No.: 4235 : HYD. RAM CYLINDER IMT (76 MM)
(M M THREAD) (SIDE HOLE 30.50 MM)
Ref. No.:



Sr No.: 4235-A : HYD. RAM CYLINDER IMT (76 MM)
(M M THREAD) (SIDE HOLE 32.50 MM)
Ref. No.:



Sr No.: 4236 : HYD. LIFT OVER LOAD STOP DISC
Ref. No.: 180981M1



Sr No.: 4237 : PIN PUMP SUPPORT MF-7250/9000
Ref. No.: 1826C01801



Sr No.: 4238 : TRANSPORT VALVE LOCK FOR MF-7250
Ref. No.:



Sr No.: 4239 : HYD. RAM CYLINDER MF. 7250, 9000
(79 MM) (S. G. Iron)
Ref. No.:

MASSEY FERGUSON TRACTOR PARTS



Sr No.: 4240 : RAM CYLINDER PISTON (79MM)
(2 GROOVE) MF-7250

Ref. No.:



Sr No.: 4241 : RAM CYLINDER PISTON (93MM) MF-7250

Ref. No.:



Sr No.: 4241-A : RAM CYLINDER WITH PISTON (93MM)
(1 GROOVE) MF-7250

Ref. No.:



Sr No.: 4241-B : RAM CYLINDER WITH PISTON (93MM)
(3 GROOVE) MF-7250

Ref. No.:



Sr No.: 4242 : STEERING TUBE BIG (415MM) MF-241

Ref. No.:



Sr No.: 4244 : HYD. LIFT HEAD LINK MF-7250

Ref. No.:

Sr No.: 4243 : STEERING TUBE SMALL (365MM) MF.

Ref. No.:



Sr No.: 4245 : HYD. LIFT RAM ROD MF-245

Ref. No.: 886410M1



Sr No.: 4246 : HYD POSITION CONTROL SHAFT MF-285

Ref. No.: 1870220M92



Sr No.: 4247 : HYD POSITION CONTROL SHAFT MF-245

Ref. No.: 1870219M92



Sr No.: 4248 : HYD DRAFT CONTROL SHAFT MF-245

Ref. No.: 1870243M92



Sr No.: 4249 : HYD POSITION CONTROL LEVER MF-245

Ref. No.: 1870341M92



Sr No.: 4250 : HYD DRAFT CONTROL LEVER MF-245

Ref. No.: 1870340M92



Sr No.: 5002 : CONTROL VALVE ASSLY. SWARAJ STD
Sr No.: 5002-A : O/S. (10, 20, 30, 40)
Ref. No.: N. P. N.



Sr No.: 5003 : UNLOAD VALVE ASSLY. SWARAJ STD
Sr No.: 5003-A : O/S. (10, 20, 30, 40)
Ref. No.: N. P. N.



Sr No.: 5004 : RAM CYLINDER SAFETY VALVE 724/735
Ref. No.: 289600A



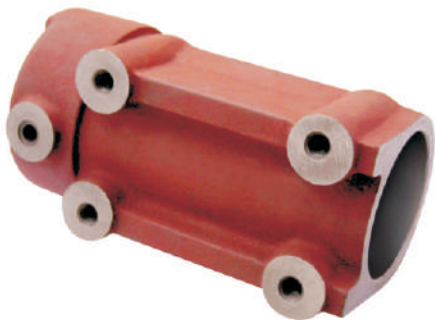
Sr No.: 5006 : HYD. PUMP VALVE CHAMBER BODY
Ref. No.: 281401/281407



Sr No.: 5007 : HYD. LIFT SAFETY VALVE N/M.-855
Ref. No.:



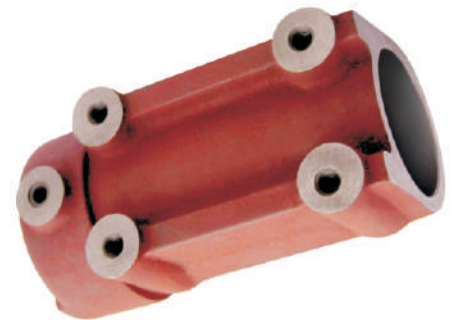
Sr No.: 5009 : HYD. PUMP CAM SHAFT SWARAJ
Ref. No.: P-281001



Sr No.: 5010 : RAM CYLINDER { 2 HOLES } (RED) (75.61 MM)
Sr No.: 5010-B : RAM CYLINDER S.G. IRON { GRAY COLOUR }
Ref. No.: 0280002E



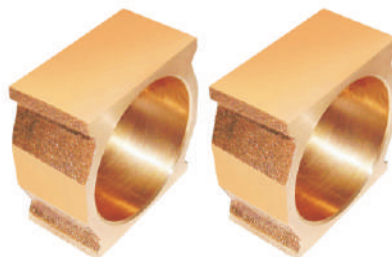
Sr No.: 5010-A : RAM CYLINDER WITH PISTON { 2 HOLES } (RED)
Sr No.: 5010-C : RAM CYLINDER WITH PISTON S. G. IRON (GRAY)
(75.61 MM)



Sr No.: 5011 : RAM CYLINDER { 1 HOLE } (RED) (75.61 MM)
Sr No.: 5011-B : RAM CYLINDER S. G. IRON { 1 HOLES } (GRAY)
Ref.No.: 282002



Sr No.: 5011-A : RAM CYLINDER WITH PISTON { 1 HOLE } (RED)
Sr No.: 5011-C : RAM CYLINDER WITH PISTON S. G. IRON (GRAY)
(75.61 MM)



Sr No.: 5012 : HYD. LIFT CAM BLOCK BUSH SET BRASS
Ref. No.: 281025



Sr No.: 5013 : HYD. CAM BUSH BIG { BRASS }
Ref. No.: P281026



Sr No.: 5013-A : HYD. CAM BUSH SMALL { BRASS }
Ref. No.: P281025



Sr No.: 5014-B : HYD. PUMP MINOR KIT SWARAJ
{ GRAY FINISH } S. G. IRON
Ref. No.: N. P. N.



Sr No.: 5015 : VALVE CHAMBER FULL KIT SWARAJ STD
Ref. No.:



Sr No.: 5016 : HYD. PUMP SQUARE PISTON SWARAJ STD
Sr No.: 5017 : O/S. (10, 20, 30, 40)
Ref. No.: 281027



Sr No.: 5021 : SAFETY VALVE MODIFIED SWARAJ
{ MM. THREAD }
Ref. No.:



Sr No.: 5024 : STEERING MAIN NUT ASSLY. { ZF TYPE }
Ref. No.:



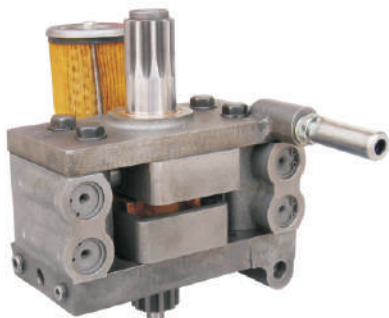
Sr No.: 5025-A : HYD. LIFT DISTRIBUTOR ASSLY. SWARAJ
{ O/M. 2 PIN }
Ref. No.:



Sr No.: 5026 : HYD. PUMP PLATE SMALL WITH BUSH SWARAJ
Ref. No.: P-281101



Sr No.: 5027 : HYD. PUMP PLATE BIG WITH BUSH SWARAJ
Ref. No.: P-281200



Sr No.: 5028 : HYD. PUMP ASSLY. SWARAJ
Ref. No.: P-281700



Sr No.: 5029 : RAM CYLINDER PISTON { 3 GROOVE } 76MM STD
Sr No.: 5029-A : O/S. (10, 20, 30, 40, 50, 60)
Ref. No.: P-780570A



Sr No.: 5030 : RAM CYLINDER PISTON { 2 GROOVE } 76MM STD
Sr No.: 5030-A : O/S. (10, 20, 30, 40, 50, 60)
Ref. No.: P-780570A



Sr No.: 5031 : FILTER { STRAINER } { TAFE TYPE }
Ref. No.: P-781100



Sr No.: 5036 : HYD. LIFT DISTRIBUTOR ASSLY. SWARAJ-744
Ref. No.: P-783220C



Sr No.: 5037 : RAM CYLINDER SWARAJ (90 MM) N/M. LONG
LENGTH 267 MM
Ref. No.:



Sr No.: 5037-A : RAM CYLINDER WITH PISTON (90 MM)
LONG LENGTH 267 MM
Ref. No.:



Sr No.: 5038 : RAM CYLINDER SWARAJ (90 MM) N/M. SHORT
LENGTH 249 MM
Ref. No.:



Sr No.: 5038-A : RAM CYLINDER WITH PISTON (90 MM)
SHORT LENGTH 249 MM
Ref. No.:



Sr No.: 5039 : RAM CYLINDER PISTON SWARAJ (90 MM) STD
Sr No.: 5039-A : O/S. (10, 20, 30)
Ref. No.:



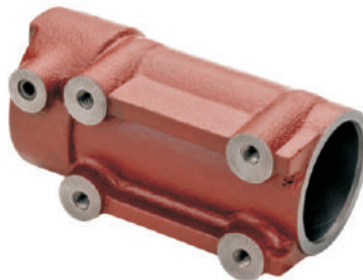
Sr No.: 5040 : CONTROL VALVE ASSLY. SWARAJ-744 STD
Sr No.: 5040-A : O/S. (10, 20, 30)
Ref. No.:



Sr No.: 5041 : UNLOAD VALVE ASSLY. SWARAJ-744 STD
Sr No.: 5041-A : O/S. (10, 20, 30)
Ref. No.:



Sr No.: 5042 : SAFETY VALVE NEW MODEL
Ref. No.:



Sr No.: 5043 : HYD. RAM CYLINDER (NEW MODEL)
(75.61MM)
Ref. No.:

ESCORT TRACTOR PARTS



Sr No.: 6001 : PUSH GUIDE { VALVE TAPPET }
Ref. No.: 500056



Sr No.: 6002 : HYD. LIFT INSERT WITH SEAT
Ref. No.: { 5016402.0 } { 5001486.0 }



Sr No.: 6003 : HYD. LIFT SAFETY VALVE ASSLY. { TESTED }
Ref. No.: 42372260



Sr No.: 6009 : HYD. LIFT SEAT. { LONG }
Ref. No.: 5016163



Sr No.: 6010 : HYD. LIFT BALL SEAT { SHORT }
Ref. No.: 5001480



Sr No.: 6011 : CONTROL VALVE ASSLY. WITH SLEEVE STD
Sr No.: 6011-A : O/S. (10, 20, 30, 40, 50, 60)
Ref. No.: 5016153



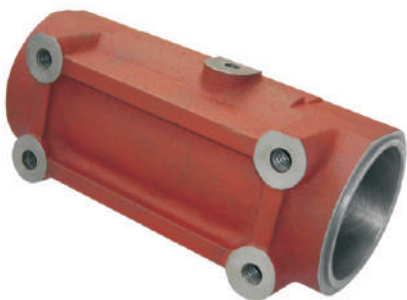
Sr No.: 6012 : HYD. LIFT DISTRIBUTOR CONTROL SHAFT STD
Ref. No.: 5016256.1



Sr No.: 6015 : HYD. LIFT DISTRIBUTOR ASSLY.
Ref. No.: 42372010



Sr No.: 6016 : HYD. LIFT DISTRIBUTOR PLUG ASSLY. ESCORT
Ref. No.: 42.372.040



Sr No.: 6017 : HYD. LIFT RAM CYLINDER ESCORT (80 MM)
Ref. No.: 5016178



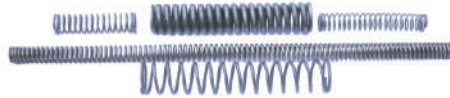
Sr No.: 6018 : RAM CYLINDER WITH PISTON ESCORT
(80 MM)
Ref. No.:



Sr No.: 6019 : RAM CYLINDER PISTON ESCORT (80 MM) STD
Sr No.: 6020 : O/S. (10, 20, 30, 40, 50, 60)
Ref. No.: 5016246



Sr No.: 6021 : DISTRIBUTOR REPAIR KIT ESCORT
Ref. No.:



Sr No.: 6022 : HYD. LIFT DISTRIBUTOR SPRING
{ SET OF 5 PCS. }
Ref. No.:



Sr No.: 6025 : HYD. LIFT DISTRIBUTOR LEVER ESCORT
Ref. No.: 50161680



Sr No.: 6026 : HYD. LIFT DISTRIBUTOR REPAIR KIT
WITH SPRING
Ref. No.:



Sr No.: 6027 : HYD. LIFT RAM CYLINDER PISTON (70 MM)
Ref. No.: 50020310



Sr No.: 6028 : HYD. RAM CYLINDER PISTON (1 GROOVE) STD
(80 MM)
Ref. No.:



Sr No.: 6029 : HYD. DISTRIBUTOR ASSLY. POWER TRAC
Ref. No.: D10558880.9



Sr No.: 6030 : CONTROL VALVE ASSLY. POWER TRAC STD.
Ref. No.:



Sr No.: 6030-A : CONTROL VALVE ASSLY. POWER TRAC
O/S. (10, 20, 30)
Ref. No.:



Sr No.: 6031 : UNLOAD VALVE ASSLY. POWER TRAC STD
Sr No.: 6031-A : O/S. (10,20,30,40,50,60)
Sr No.: 6031-B : Special O/S.



Sr No.: 6032 : FLOW CONTROL VALVE POWER TRAC STD
Sr No.: 6032-A : O/S. (10,20,30,40,50,60)
Sr No.: 6032-B : Special O/S.



Sr No.: 6033 : HYD. LIFT SAFETY VALVE ASSLY.
{ TESTED } POWER TRACK N/M
Ref. No.:

NEW HOLLAND TRACTOR PARTS



Sr No.: 1501 : RAM CYLINDER PISTON (90 MM) STD
Sr No.: 1501-A : O/S. (10, 20, 30)
Ref. No.:



Sr No.: 1502 : HYDRAULIC CONTROL VALVE FOR
 NEW HOLLAND 5169834.P MODEL NO. 3600, T3A/3630
Ref. No.:



Sr No.: 1503 : HYDRAULIC VALVE NEW HOLLAND 82826147.P
 MODEL NO. 3030,32,37,31,3230
Ref. No.:



Sr No.: 1503-A : HYDRAULIC DISTRIBUTOR VALVE
 NEW HOLLAND
Ref. No.:



Sr No.: 1504 : HYDRAULIC DISTRIBUTOR PISTON ONLY.
 FOR NEW HOLLAND / JOHN DEERE TRACTOR
Ref. No.:



Sr No.: 1505 : HYD. DISTRIBUTOR CONTROL VALVE ASSLY.
 FOR NEW HOLLAND / JOHN DEERE TRACTOR
Ref. No.:



Sr No.: 1506 : HYD. CONTROL VALVE ASSEMBLY (NDL SUPER)
 (NON HP) NEW HOLLAND 4710,3600
Ref. No.:



Sr No.: 1507 : HYD. CONTROL VALVE ASSEMBLY (HP Valve)
 WITH Safety Valve NEW HOLLAND 3230, 3037, 3130
Ref. No.:



Sr No.: 1508 : HYD. RAM CYLINDER (85MM) NEW HOLLAND
Sr No.: 1508-A : HYD. RAM CYLINDER WITH PISTON (85MM)
Ref. No.:



Sr No.: 1509 : HYD. RAM CYLINDER PISTON STD (85MM)
 { 1 GROOVE }
Sr No.: 1509-A : O/S. (10, 20, 30) **Ref. No.:**



Sr No.: 1510 : HYD. RAM CYLINDER (90MM) NEW HOLLAND
Sr No.: 1510-A : HYD. RAM CYLINDER WITH PISTON (90 MM)
Ref. No.:



Sr No.: 1511 : RAM CYLINDER PISTON (STEEL)
 (90 MM) NEW HOLLAND
Ref. No.:



Sr No.: 7001 : SPOOL & SLEEVE SHORT TYPE FOR EICHER TRACTOR

Ref. No.:



Sr No.: 7002 : SPOOL & SLEEVE LONG TYPE FOR EICHER TRACTOR

Ref. No.:



Sr No.: 7003 : RELEASE VALVE WITHOUT GROOVE FOR EICHER TRACTOR

Ref. No.:



Sr No.: 7004 : RELEASE VALVE O-RING GROOVE TYPE FOR EICHER TRACTOR

Ref. No.:



Sr No.: 7005 : VALVE FOR EICHER TRACTOR

Ref. No.:



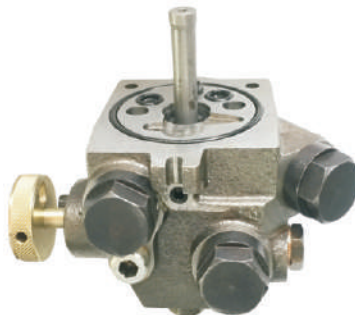
Sr No.: 7006 : SMALL VALVE FOR EICHER TRACTOR

Ref. No.:



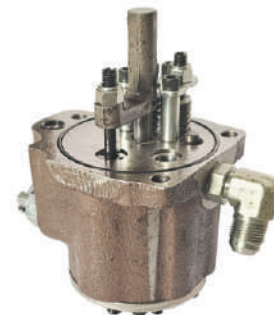
Sr No.: 7007 : VALVE FOR EICHER TRACTOR

Ref. No.:



Sr No.: 7008 : HYDRAULIC DISTRIBUTOR ASSLY. EICHER (PRV VALVE)

Ref. No.:



Sr No.: 7009 : HYDRAULIC DISTRIBUTOR ASSLY. EICHER

Ref. No.:



Sr No.: 7501 : HYDRAULIC RAM CYLINDER PISTON STD FOR SONALIKA TRACTOR

Ref. No.:



Sr No.: 7502 : RELIEF VALVE ASSLY. (PRESSURE 200 BAR) (GROOVE TYPE) FOR SONALIKA TRACTOR

Ref. No.:



Sr No.: 7503 : RELEASE VALVE ASSLY. (PRESSURE 175 BAR) FOR SONALIKA TRACTOR

Ref. No.:



Sr No.: 7504 : VALVE ASSLY. (GROOVE TYPE ON OD) FOR SONALIKA TRACTOR

Ref. No.:



Sr No.: 7505 : VALVE ASSLY. FOR SONALIKA TRACTOR

Ref. No.:



Sr No.: 7506 : HYD. CONTROL VALVE ASSLY. STD SONALIKA TRACTOR

Sr No.: 7506-A : O/S. (10, 20, 30) Ref. No.:



Sr No.: 7507 : HYD. CONTROL VALVE ASSLY. SONALIKA MODEL 75/90/110/120 (FOR EXPORTS)

Ref. No.:



Sr No.: 7508 : HYD. CONTROL VALVE ASSLY. SONALIKA FOR ALL MODEL (DOMESTIC)

Ref. No.:



Sr No.: 7509 : HYD. CONTROL VALVE ASSLY. FOR SINGAL LEVER MINI TRACTOR SONALIKA GT-20 & VST TRACTOR.

Ref. No.:



Sr No.: 7510 : HYD. RAM CYLINDER (65MM) GARDEN TRACTOR

Ref. No.:



Sr No.: 7511 : RAM CYLINDER PISTON (65MM) GARDEN TRACTOR

Ref. No.:



Sr No.: 7512 : HYDRAULIC TOP LINK BRACKET GARDEN TRACTOR

Ref. No.:



WIDE RANGE OF TRACTOR PARTS



KALAPI TRACTOR SPARES PVT. LTD.

Postal Add.: Survey No. 206, Pal Ravki Road, Opp. Nayra Petrol Pumps,
RAVKI, RAJKOT - 360004. (Gujarat) India.

Office : +91 99798 98984, +91 99254 44609

Email : info@kalapiauto.com Website : www.kalapiauto.com