

**MANUFACTURER & EXPORTER OF TRACTOR PARTS
(HYDRAULIC & OTHER PARTS)**





Thinking out of box is the way
of life for Technique Auto Industries.

With a modest beginning in 450sq. feet workshop in 1988 at Rajkot (Gujarat) India, we advanced our sojourn to create niche in the ever growing and highly promising market of Tractor Parts & Components. Gradually we identified greater opportunity in replacement Tractor Parts & Components sector due to its ever increasing repeated demand in local as well as in Global markets.

Today Technique Auto Industry is a name to reckon in replacement Tractor Parts & Component markets due to its considerable share in local markets and growing overseas exports.

We have simple but time tested ethics of business practice. We provide good quality products, which sales fast and reduce inventory & rejection. Hence we are respected as manufacturer of Quality replacement Tractor parts and components at cheapest rate.

We are amongst those very rare organizations in Auto / Tractor parts and components sector which believes and proved that quality reduces the production cost. We have made this possible with our whole hearted efforts through a team of highly qualified Engineers and skilled Technicians in a manufacturing facility which does not had modern technology in its initial days. This strength brings us better-repeated business in Tractor and other Auto Parts manufacturing also.

Due to constant innovation in conventional machinery to get better results at reduced input cost as well as investing in CNCs, VMCs, HMC and SPMs to handle mass production with speed and higher accuracy at reduced energy and manpower cost, we are able to provide extraordinary products at highly reasonable price. We have achieved 90% manufacturing process automation in last one and a half decade. For rapid growth and standard production; CNCs, VMCs, HMC and SPMs play Key role. This allow us to deliver the goods on time with enhanced quality @ reduced cost.

With constant improvement and value addition along with greater customer satisfaction, we have progressed many folds in last two and a half decades and today we have world class, fully integrated manufacturing facility of 27000 sq. feet in the outskirts of Rajkot at Kotharia Village with 100% capacity expansion capacity for further market consolidation in this sector across the globe.

Also plans are afoot to become world class Branded Tractor & Auto Parts Manufacturer and already there is more than 25% progress in this direction in last three years.

Come; put your requirements in front of us, and we will provide you the best possible rates to enable you to consolidate your position in highly competitive domestic and global markets.

Profile	1
Promise For Quality	2
Products	3
Production Process	37
Manufacturing Facility	38

PROMISE FOR QUALITY



Whether small task or big one,
for us it is an opportunity
to prove our quality standards time
and again to our most valued customers.

With Post Graduate Diploma in Production Engineering in 1978 with first class first in entire Gujarat State, a Farmer's son and an enthusiastic young man A. S. Baldha dreamed to start manufacturing Auto Parts, particularly Tractor parts. He firmly believed that success lies in quality of the products we serve, we have been convinced for decades and it has been a part of our belief system that quality always win greater competition. So we always make sure that whatever we offer to our customers is of good quality.

To keep stringent quality of our products, we have dedicated team for procuring standard raw materials, physical and chemical testing, crack detection in bars, soft stage inspection and final quality inspections. These people constantly keep their vigil on every production process. Each and every operation on different parts are visually and instrumentally checked for accuracy to ensure that the end products are free of defects.

For us rejection is not only loss of our profit but the loss of our client's profit and prestige both. So on our part we always make sure that each and every Part / Component we manufacture should be free of defects and well packaged to sell easily.

Technique Auto Team





Sr No.: 1001 : ROCKER SHAFT O/M.
Ref. No.: CSNE6563AA



Sr No.: 1001-A : ROCKER SHAFT N/M.
Ref. No.: E7NN6563AA



Sr No.: 1002 : PUSH GUIDE (VALVE-TAPPET)
Ref. No.: C7NN6500B



Sr No.: 1003 : RAIL TRANS GEAR SHIFT (HIGH & LOW)
Ref. No.: CSNN7240AD



Sr No.: 1004 : RAIL TRANS GEAR SHIFT (7 & 3 - 5 & 1)
Ref. No.: CSNN7240A



Sr No.: 1005 : RAIL TRANS GEAR SHIFT (2 & 6 REVERSE)
Ref. No.: CSNN7240B



Sr No.: 1006 : RAIL TRANS GEAR SHIFT (4 & 8)
Ref. No.: CSNN7240L



Sr No.: 1007 : CRANK SHAFT SPACER O/M. (CUT TYPE)
Ref. No.: Z2NH6B306A



Sr No.: 1008 : CRANK SHAFT SPACER N/M.
Ref. No.: 91NH6B306AA



Sr No.: 1009 : STAND PIPE
Ref. No.: C7NNB853D



Sr No.: 1011 : ROCKER PADASTER
Ref. No.: C7NN6531A



Sr No.: 1011-A : ROCKER PADASTER N/M. (BLACK)
Ref. No.:

FORD FARM TRAC TRACTOR PARTS



Sr No.: 1012 : DRAFT CONTROL PLUNGER
Ref. No.: CSNN541A



Sr No.: 1013 : OIL PUMP INTERMEDIATE SHAFT
Ref. No.: C7NN6A605A



Sr No.: 1014 : CAM SHAFT ADOPTER
Ref. No.: C5NE6A255A



Sr No.: 1016 : PLUNGER YOKE O/M
Ref. No.: CSNN546C



Sr No.: 1017 : PLUNGER YOKE N/M
Ref. No.: 93NH546AA



Sr No.: 1019 : HYD. LIFT PUMP PLATE (IMP. PUMP)
Ref. No.: CONN852A



Sr No.: 1020 : OIL PUMP DRIVE SHAFT FORD-3610
Ref. No.: N. P. N.



Sr No.: 1021 : OIL PUMP DRIVE GEAR WITH SHAFT FORD-3610 (MAT. USE M.S. WITHOUT HARD)
Ref. No.: D3NN6A820E



Sr No.: 1021-A : OIL PUMP DRIVE GEAR WITH SHAFT FORD-3610 (HARD) BLACK
Ref. No.: D3NN6A820E



Sr No.: 1022 : OIL PUMP ROTOR SHAFT
Ref. No.: DINN6609A



Sr No.: 1023 : OIL PUMP ASSLY. (TESTED)
Ref. No.: DINN6600D



Sr No.: 1024 : CONTROL LEVER SHAFT
Ref. No.: D3NN517B



Sr No.: 1027 : CONTROL VALVE ASSLY FORD-3610 STD
Sr No.: 1027A : O/S. (10,20,30,40,50,60)
Sr No.: 1027B : Special O/S. Ref. No.: E0NN488EA



Sr No.: 1028 : CONTROL VALVE ASSLY. FORD-3600 STD
Sr No.: 1028A : O/S. (10,20,30,40,50,60)
Sr No.: 1028B : Special O/S. Ref. No.: D3NN488



Sr No.: 1029 : UNLOAD VALVE ASSLY. FORD-3610 STD
Sr No.: 1029A : O/S. (10,20,30,40,50,60)
Sr No.: 1029B : Special O/S. Ref. No.: E0NN925



Sr No.: 1030 : UNLOAD VALVE ASSLY.FORD-3600 STD
Sr No.: 1030A : O/S. (10,20,30,40,50,60)
Sr No.: 1030B : Special O/S. Ref. No.: D3NN925



Sr No.: 1031 : FLOW CONTROL VALVE ASSLY. FORD-3610 STD
Sr No.: 1031A : O/S. (10,20,30,40,50,60)
Sr No.: 1031B : Special O/S. Ref. No.: E0NNF928



Sr No.: 1032 : SAFETY VALVE FORD
Ref. No.: 957E984B



Sr No.: 1033 : CAM SHAFT ADOPTR N/M
Ref. No.:



Sr No.: 1034 : OIL PUMP ROTOR & SHAFT ASSLY.
Ref. No.: D1NN608D



Sr No.: 1039 : FLOW CONTROL VALVE ASSLY FORD-3600 STD
Sr No.: 1039A : O/S. (10,20,30,40,50,60)
Sr No.: 1039B : Special O/S. Ref. No.: D3NNF928A



Sr No.: 1043 : DRAFT CONTROL PLUNGER WITH YOKE O/M
Ref. No.: N. P. N.

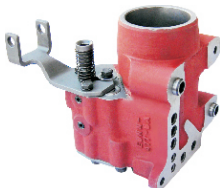


Sr No.: 1044 : DRAFT CONTROL PLUNGER WITH YOKE O/M
Ref. No.: N. P. N.



Sr No.: 1046 : CONTROL VALVE WITH SLEEVE ASSLY.
FORD-3000 STD Ref. No.: C7NN488
Sr No.: 1046A : O/S. (10,20,30,40)

FORD FARM TRAC TRACTOR PARTS



Sr No.: 1048-A: HYD. RAM CYLINDER WITH
PISTON ASSLY. (S. G. IRON)
Ref. No.: D3NN477E



Sr No.: 1049: RAM CYLINDER PISTON STD FORD
Sr No.: 1050: O/S. (10,20,30,40)
Ref. No.: C5NN530B



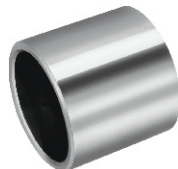
Sr No.: 1055: RAM CYLINDER SHEET METAL PLATE BIG
Ref. No.: EONN925



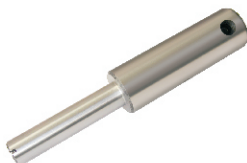
Sr No.: 1056: RAM CYLINDER SHEET METAL PLATE SMALL
Ref. No.:



Sr No.: 1057: HYDRAULIC SEAT FORD
Ref. No.:



Sr No.: 1063: ARM SHAFT BUSH FORD-5000
Ref. No.: C5NN531A / 83933328



Sr No.: 1064: REVERSE IDLER SHAFT (HARD & GRIND)
Ref. No.: C5NN7140B



Sr No.: 1065: RELIEF VALVE FORD 3000
Ref. No.: E1ADDN984, 81717251



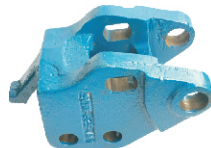
Sr No.: 1067: HYD. LIFT ARM SHAFT BUSH (SET OF 4 PCS)
Ref. No.:



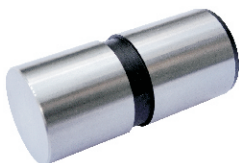
Sr No.: 1068: RELIEF VALVE FORD-5000, 5600
Ref. No.: 81838679, 83911832, D3NN984C, D5NN984A



Sr No.: 1069: VALVE TAPPET (MAT. USE CHILDED CASTING)
Ref. No.: E1ADN6489B



Sr No.: 1070: ROCKER BRACKET FORD 3620
Ref. No.: 90NH5354B



Sr No.: 2001 : PUSH GUIDE (VALVE TAPPETS)
Ref. No.: 95045090



Sr No.: 2002 : DIFFERENTIAL VALVE ASSLY. H.M.T. STD
Sr No.: 2002A : O/S. (10,20,30,40,50,60)
Ref. No.: 2581030090



Sr No.: 2003 : INNER CIRCUIT VALVE ASSLY. H. M. T. STD
Sr No.: 2003A : O/S. (10,20,30,40)
Ref. No.: 95810590



Sr No.: 2004 : OUTER CIRCUIT VALVE ASSLY. H. M. T. STD
Sr No.: 2004A : O/S. (10,20,30,40)
Ref. No.: 95810390



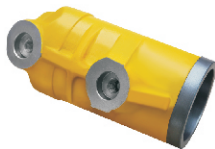
Sr No.: 2005 : SAFETY VALVE ASSLY. H.M.T. 5511/5911
Ref. No.: 67118018



Sr No.: 2013 : REDUCTION VALVE BOLT
Ref. No.: 95814690



Sr No.: 2014 : RAM CYLINDER HMT-2511 (80.00 MM)
Ref. No.: 95802190



Sr No.: 2014-A : RAM CYLINDER HMT-3522 (82.50 MM)
Ref. No.: 95802590



Sr No.: 2014-B : RAM CYLINDER WITH PISTON HMT-2511 (80.00 MM)
Ref. No.:



Sr No.: 2014-C : RAM CYLINDER WITH PISTON HMT-3522 (82.50 MM)
Ref. No.:



Sr No.: 2015 : SAFETY VALVE ASSLY. 2511/3511
Ref. No.: 95484590



Sr No.: 2023 : OVER LOAD VALVE ASSLY. H.M.T. (145mm LENGTH)
Ref. No.:

H. M. T.(ZETOR) TRACTOR PARTS



Sr No.: 2024 : OVER LOAD VALVE ASSLY. H.M.T.
(115mm LENGTH)
Ref. No.: 55114621.9



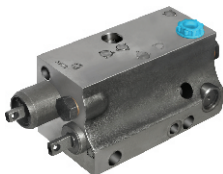
Sr No.: 2025 : RAM CYLINDER PISTON (80.00 MM) STD
Sr No.: 2026 : O/S. (10,20,30,40,50,60)
Ref. No.: 958025.9



Sr No.: 2027 : RAM CYLINDER PISTON (82.50 MM) STD
Sr No.: 2028 : O/S. (10,20,30,40,50,60)
Ref. No.: 958025.9



Sr No.: 2029 : TIMING GEAR SHAFT H.M.T.
Ref. No.: 95041290



Sr No.: 2030 : DISTRIBUTOR ASSLY. H.M.T. 2511/3511
Ref. No.: 25810000



Sr No.: 2031 : RAM CYLINDER HMT 5911
Ref. No.:



Sr No.: 2031A : RAM CYLINDER WITH PISTON HMT-5911
Ref. No.:



Sr No.: 2032 : RAM CYLINDER PISTON HMT-5911 STD
Ref. No.:



Sr No.: 2033 : HYD. LIFT DISTRIBUTOR REPAIR KIT
Ref. No.:



Sr No.: 3002 : HYD. LIFT SPEED CONTROL PISTON STD
Sr No.: 3003 : O/S.
Ref. No.: 3045105R1



Sr No.: 3004 : DIFFERENTIAL SHAFT STD (Set of 4 Pcs)
Sr No.: 3005 : O/S. (10,20,30,40,50)
Ref. No.: 704707R2



Sr No.: 3009 : ISOLATOR VALVE ASSLY.
Ref. No.: 3045102R21



Sr No.: 3010 : SPEED CONTROL VALVE ASSLY.
Ref. No.: 3045103R11



Sr No.: 3012 : STEERING MAIN NUT ASSLY. "XLO" MODEL
Ref. No.: N. P. N.



Sr No.: 3014 : CONTROL VALVE HEAD PLATE WITH
SPEED CONTROL PISTON ASSLY. B-275
Ref. No.: 3069235R91



Sr No.: 3016 : NON RELIEF VALVE BALL RIDER
Ref. No.: 3108946R1



Sr No.: 3017 : REGULATOR VALVE ASSLY. (LOCK TYPE)
Ref. No.: 751563R91



Sr No.: 3019 : FLOW CONTROL VALVE SEAT
Ref. No.: 751562R1



Sr No.: 3020 : NON RETURN VALVE SLEEVE
Ref. No.: 751555R2



Sr No.: 3024 : STEERING PAG BALL L/M
Ref. No.: 1231108R1



Sr No.: 3031 : SPOOL LOWERING ASSLY. INTER
Ref. No.: 3049142R95

INTER (MAHINDRA) TRACTOR PARTS



Sr No.: 3031A : SPOOL LOWERING SHAFT ONLY INTER
Ref. No.:



Sr No.: 3032 : SPOOL & SLEEVE ASSLY. INTER
Ref. No.: 3049088R9



Sr No.: 3033 : SPOOL & SLEEVE PLUNGER ONLY STD INTER
Sr No.: 3034 : O/S. (10,20,30,40)
Ref. No.: N. P. N.



Sr No.: 3035 : NON RETURN VALVE SEAT
Ref. No.: 751559R2



Sr No.: 3036 : NON RETURN VALVE SEAT L/M.
Ref. No.: N. P. N.



Sr No.: 3038 : RELIEF VALVE SEAT
Ref. No.: 751554R1



Sr No.: 3046 : SPOOL & SLEEVE ASSLY. INTER 585 DI
(60 HP) (14 HOLE)
Ref. No.: 000051153D01



Sr No.: 3046A : SPOOL & SLEEVE ASSLY. INTER 585 DI
(60 HP) (16 HOLE)
Ref. No.:



Sr No.: 3046B : SPOOL & SLEEVE ASSLY. INTER 585 DI
(60 HP) (19 HOLE)
Ref. No.:



Sr No.: 3048 : REGULATOR VALVE ASSLY. L/M. (LOCK TYPE)
Ref. No.:



Sr No.: 3051 : COMPENSATOR SPOOL & SLEEVE 585 DI L/M.
Ref. No.: 000050875D01



Sr No.: 3053 : STEERING MAIN NUT ASSLY. (ZF MODEL)
Ref. No.:



Sr No.: 3055 : HYD. LIFT REPAIR MINOR KIT
Ref. No.:



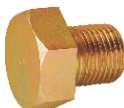
Sr No.: 3055A : HYD. LIFT REPAIR KIT INTER 585 DI L/M.
Ref. No.:



Sr No.: 3056 : HYD. LIFT SPEED CONTROL PISTON PLUG WITH PIN L/M.
Ref. No.:



Sr No.: 3056A : HYD. LIFT SPEED CONTROL PISTON PLUG WITH SMALL PIN
Ref. No.:



Sr No.: 3057 : HYD. LIFT PLATE BOLT
Ref. No.: 706027R1



Sr No.: 3058 : HYD. LIFT SPACER
Ref. No.: 3045109R2



Sr No.: 3059 : HYD. PLATE BOLT SEALING WASHER BIG
Ref. No.: 704337R1



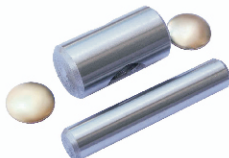
Sr No.: 3060 : HYD. PLATE BOLT SEALING WASHER SMALL
Ref. No.:



Sr No.: 3061 : GEAR SHIFTER LEVER PIN BIG INTER
Ref. No.:



Sr No.: 3062 : GEAR SHIFTER LEVER PIN SMALL INTER
Ref. No.:



Sr No.: 3063 : GEAR SHIFTER LEVER PIN KIT INTER
Ref. No.:



Sr No.: 3064 : HYD. LIFT NON RETURN VALVE SEAT N/M. SHORT
Ref. No.:

INTER (MAHINDRA) TRACTOR PARTS



Sr No.: 3065 : NON RETURN VALVE SEAT N/M. LONG
Ref. No.: N. P. N.



Sr No.: 3066 : RAM CYLINDER PISTON (1 GROOVE) STD
Sr No.: 3066A : O/S (10,20,30,40)
Ref. No.: 3044276R92



Sr No.: 3067 : RAM CYLINDER PISTON (3 GROOVE) STD
Sr No.: 3067A : O/S (10,20,30,40)
Ref. No.: 3044376R93



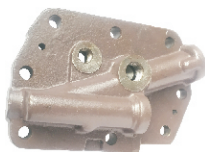
Sr No.: 3068 : RAM CYLINDER PISTON 585 DI L/M. STD
Sr No.: 3068A : O/S. (10,20,30,40) (HIGH TECH MODEL)
Ref. No.: 005554406R1



Sr No.: 3069 : RAM CYLINDER PISTON SPRING KIT
Ref. No.:



Sr No.: 3070 : HYD. LIFT RAM CYLINDER INTER (40 HP)
Ref. No.: 3044434R1



Sr No.: 3071 : CONTROL VALVE HEAD PLATE WITH PISTON ASSLY. (60 HP) (GRAY COLOR)
Ref. No.:



Sr No.: 3072 : CONTROL VALVE HEAD PLATE WITH PISTON ASSLY. (40 HP) (ORANGE COLOR)
Ref. No.:



Sr No.: 3073 : RAM CYLINDER PISTON YUVRAJ STD
Sr No.: 3073A : O/S. (10,20,30,40)
Ref. No.:

MASSEY FERGUSON TRACTOR PARTS



Sr No.: 4008 : PUSH GUIDE (VALVE TAPPET)
Ref. No.: 860007



Sr No.: 4009 : HYD. LIFT LEVER GUIDE
Ref. No.: 181011M1



Sr No.: 4010 : OIL ASSLY. SHAFT P3, P6 (WITH GROOVE)
Ref. No.: 750001



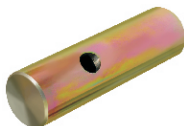
Sr No.: 4010A : OIL ASSLY. SHAFT P3, P6 (WITHOUT GROOVE)
Ref. No.: 750001



Sr No.: 4011 : CONTROL VALVE SQUARE HEAD PIN
Ref. No.: 180937M91



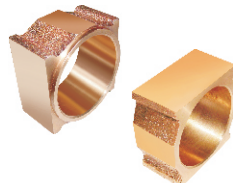
Sr No.: 4013 : REAR AXLE HUB
Ref. No.: 183255M2



Sr No.: 4014 : CLUTCH PADDLE SHAFT SMALL
Ref. No.: 180449M1



Sr No.: 4015 : CLUTCH PADDLE SHAFT BIG
Ref. No.: 180444M1



Sr No.: 4016 : CAM BLOCK BUSH SETS BRASS
Ref. No.: 180924 / 180925M2



Sr No.: 4016-A : CAM BLOCK BUSH BRASS (COLLER TYPE)
Ref. No.: 180924M2



Sr No.: 4016-B : CAM BLOCK BUSH (WITHOUT COLLER)
Ref. No.: 180925M2



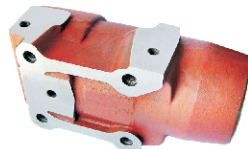
Sr No.: 4017 : OSCILLATOR BODY MF-1035
Ref. No.: 182002M1



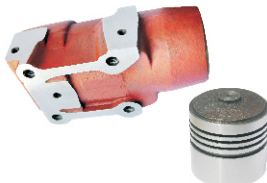
Sr No.: 4017-A : OSCILLATOR BODY WITH LINK ASSLY.
MF-1035
Ref. No.: 190855M1



Sr No.: 4018 : DRAFT CONTROL ROD MF-1035
Ref. No.: 190855M1



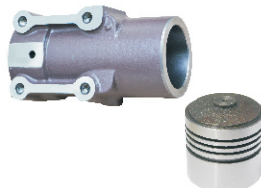
Sr No.: 4019 : HYD. LIFT RAM CYLINDER MF-1035 (76 MM)
Ref. No.: 190859M1



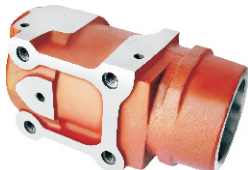
Sr No.: 4019-A : RAM CYLINDER WITH PISTON MF-1035 (RED) (76 MM)
Ref. No.:



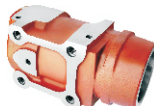
Sr No.: 4019-B : RAM CYLINDER (76 MM) (GRAY) S.G. IRON MF-1035
Ref. No.: 190859M1



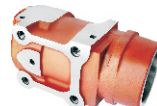
Sr No.: 4019-C : RAM CYLINDER WITH PISTON (76 MM) (GRAY) S.G. IRON MF-1035
Ref. No.:



Sr No.: 4020 : HYD. LIFT RAM CYLINDER MF-245 (79 MM)
Ref. No.: 897560M3



Sr No.: 4020-A : RAM CYLINDER WITH PISTON 1 GROOVE MF-245 (79 MM)
Ref. No.:



Sr No.: 4020-B : RAM CYLINDER WITH PISTON 3 GROOVE MF-245 (79 MM)
Ref. No.:



Sr No.: 4022 : GEAR FORK BIG MF-1035 (INVESTMENT CASTING)
Ref. No.: 180437M1



Sr No.: 4023 : GEAR FORK SMALL MF-1035 / 245 (INVESTMENT CASTING)
Ref. No.: 180443M1



Sr No.: 4024 : HYD. PUMP CONTROL VALVE GUIDE SQUARE
Ref. No.: 1862576M2

MASSEY FERGUSON TRACTOR PARTS



SrNo.: 4025 : GEAR FORK BIG (INVESTMENT CASTING)
MF-245
Ref. No.: 1860773M1



SrNo.: 4027 : HYD. PUMP OSCILLATOR BODY
MF-245
Ref. No.: 1869826M93



SrNo.: 4028 : CONTROL VALVE MF -1035
(Special Lapping Finish)
Ref. No.: 189427M91



SrNo.: 4030-B : CONTROL VALVE ASSLY. O/M [ROUND ROD]
MF-245 (WITH "O" RING & ROLLER & PIN) 198 MM
Ref. No.: 1870763M92



SrNo.: 4030-C : CONTROL VALVE ASSLY. N/M [SQUARE ROD]
MF-245 (WITH "O" RING & ROLLER & PIN) 198 MM
Ref. No.: 1881789M91



SrNo.: 4031-A : CONTROL VALVE [HARD] MF-135 MARK II
(WITH ROLLER & PIN) 217 MM
Ref. No.: 897507M92



SrNo.: 4032 : RELIEF VALVE MF-1035 (2300 - 2800 PSI)
COLOR CODE : SELF COLOR
Ref. No.: 828927M91



SrNo.: 4032-A : RELIEF VALVE (SINGLE BODY) MF-1035
(2300 TO 2800 PSI) HEX TYPE
Ref. No.:



SrNo.: 4033 : RELIEF VALVE SMALL MF-1035
(2300 - 2800 PSI)
COLOR CODE : YELLOW
Ref. No.: 190537M91



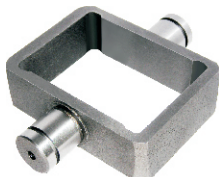
SrNo.: 4034 : OIL ASSLY. SHAFT P4
Ref. No.: 32736413



SrNo.: 4035 : RELIEF VALVE MF - 245 (2800-3200 PSI)
COLOR CODE : BLACK
Ref. No.: 884747M92



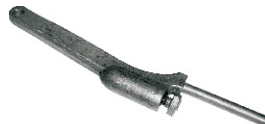
SrNo.: 4035-B : RELIEF VALVE (2500-3000 PSI)
COLOR CODE : YELLOW
Ref. No.: 883402M92



Sr No.: 4036 : SQUARE PISTON MF-1035 STD (CASTING)
Sr No.: 4036-A : O/S. (10,20,30,40) (CASTING)
Sr No.: 4036-D : [S.G. IRON] **Ref. No.:** 190799M1



Sr No.: 4037 : VALVE CHAMBER FULL KIT STD MF-1035
Sr No.: 4038 : VALVE CHAMBER FULL KIT O/S.
Ref. No.:



Sr No.: 4040 : DRAFT CONTROL ROD WITH BOLT MF-245
Ref. No.: 898124M1 / 898128M1



Sr No.: 4042 : VALVE CHAMBER BODY BARE MF-1035
(5 HOLE) 23 MM
Ref. No.: 184471M1



Sr No.: 4042-A : VALVE CHAMBER BODY WITH VALVE ASSLY.
MF-1035 (5 HOLE) 23 MM
Ref. No.: 184471M1



Sr No.: 4043 : VALVE CHAMBER BODY BARE MF-135
(4 HOLES) 25 MM
Ref. No.: 897491M91



Sr No.: 4043-A : VALVE CHAMBER BODY WITH VALVE ASSLY.
MF-135 (4 HOLES) 25 MM
Ref. No.: 897491M91



Sr No.: 4044 : VALVE CHAMBER BODY BARE MF-245
(4 HOLES) 25 MM
Ref. No.: 1868435M3



Sr No.: 4044-A : VALVE CHAMBER BODY WITH VALVE ASSLY.
MF-245 (4 HOLES) 25 MM
Ref. No.: 1868435M3



Sr No.: 4045 : VALVE CHAMBER FULL KIT STD MF-245
Ref. No.:



Sr No.: 4046-B : SQUARE PISTON MF-135 STD (CASTING)
Sr No.: 4046-C : O/S. (10,20) (CASTING)
Sr No.: 4047 : [S.G. IRON] **Ref. No.:** 897492M1

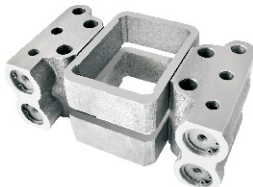


Sr No.: 4048-B : SQUARE PISTON MF-245 STD (CASTING)
Sr No.: 4048-C : O/S. (10,20) (CASTING)
Sr No.: 4049 : [S.G. IRON] **Ref. No.:** 1860038M1

MASSEY FERGUSON TRACTOR PARTS



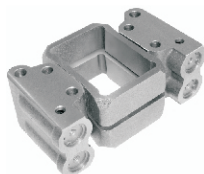
SrNo.: 4050 : RAM CYLINDER PISTON STD MF-1035 (76 MM)
SrNo.: 4051 : O/S. (10,20,30,40,50,60,70,80) [4 GROOVE]
Ref. No.: 713288M91



SrNo.: 4052-B : MINOR KIT MF-1035 (23 MM) (S. G. IRON)
Ref. No.: 1810858M1



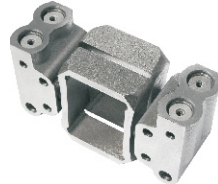
SrNo.: 4052-C : HYD. PUMP MAJOR KIT WITH CAM BLOCK
BUSH & "O" RING KIT MF-1035 MARK I
Ref. No.: 1810858M1



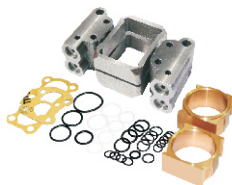
SrNo.: 4053-B : MINOR KIT MF-135 (25 MM) (S. G. IRON)
Ref. No.: 1810859M1



SrNo.: 4053-C : HYD. PUMP MAJOR KIT WITH CAM BLOCK
BUSH & "O" RING KIT MF-135 MARK II
Ref. No.: 1810859M1



SrNo.: 4054-B : MINOR KIT MF-245 (25 MM) (S. G. IRON)
Ref. No.: 1810860M93



SrNo.: 4054-C : HYD. PUMP MAJOR KIT WITH CAM BLOCK
BUSH & "O" RING KIT MF-245 MARK III
Ref. No.:



SrNo.: 4057 : HYD. PUMP VALVE CHAMBER PLUG MF-1035
Ref. No.: 181999M1



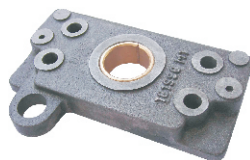
SrNo.: 4059 : HYD. PUMP VALVE CHAMBER PLUG MF-245
Ref. No.: 1868741M1



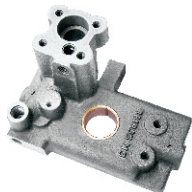
SrNo.: 4060 : CHAMBER VALVE PAIR CUT TYPE STD
SrNo.: 4060-A : CHAMBER VALVE PAIR CUT TYPE O/S.
Ref. No.:



SrNo.: 4061 : HYD. PUMP OSCILATOR BODY MF-135
Ref. No.: 897496M91



SrNo.: 4062 : HYD. PUMP PLATE (SMALL) FRONT
WITH BUSH & SCREW MF-1035
Ref. No.: 181996M1 / 182006M91



Sr No.: 4063 : HYD. PUMP PLATE (BIG) REAR
WITH BUSH & SCREW MF-1035
Ref. No.: 181995M3 / 182005M93



Sr No.: 4064 : HYD. PUMP OSCILLATOR LINK MF-1035
Ref. No.: 180934M1



Sr No.: 4065 : HYD. PUMP CONTROL VALVE LEVER N/M.
MF-1035
Ref. No.: 189370M91



Sr No.: 4066 : HYD. PUMP CAM-SHAFT (10 SPLINES)
MF-1035
Ref. No.: 181994M1



Sr No.: 4067 : GEAR FORK MEDIUM (INVESTMENT CASTING)
MF-245
Ref. No.: 1873532M1



Sr No.: 4068 : HYD. PUMP CAM SHAFT (21 SPLINES) MF-1035
Ref. No.: 1868544M92



Sr No.: 4069 : HYD. PUMP CAM SHAFT (10 SPLINES)
MF-135
Ref. No.: 899154M91



Sr No.: 4070 : HYD. PUMP CAM SHAFT (21 SPLINES)
(SHORT LENGTH) (WITH "O" RING & ROLLER & PIN)
MF-240
Ref. No.: 1868544M02



Sr No.: 4071 : CONTROL VALVE ASSLY. MARK II (219 MM)
WITH "O" RING MF-135
Ref. No.: 186246M96



Sr No.: 4076 : CONTROL VALVE ASSLY. MF-1035 NEW DESIGN
(WITH "O" RING)
Ref. No.: 189427M91 Replace



Sr No.: 4077 : CONTROL VALVE ASSLY. MF-240 (190 MM)
(WITH "O" RING & ROLLER & PIN)
Ref. No.: 3611085M91



Sr No.: 4078 : CONTROL VALVE ASSLY. MF-245 (219 MM)
WITH "O" RING MF-135
Ref. No.: 1660209M91

MASSEY FERGUSON TRACTOR PARTS



SrNo.: 4079 : HYD. PUMP ASSLY. MF-1035 (10 SPLINE)
Ref. No.: 184472M94



SrNo.: 4079-A : HYD. PUMP ASSLY. MF-DL (21 SPLINE)
Ref. No.: 713916M92



SrNo.: 4080 : STEERING OUTER TUBE COLUMN
(MOUTH) O/M. MF.
Ref. No.:



SrNo.: 4081 : STEERING OUTER TUBE COLUMN
(MOUTH) N/M. MF.
Ref. No.:



SrNo.: 4082-A : HYD. PUMP PLATE BUSH (BI METAL)
Ref. No.: 1664491M1 / 1865012M1



SrNo.: 4083 : SQUARE PISTON RING (23 MM) MF-1035
STD (SET OF 4 PCS.)
Ref. No.: 190845M1 / 892604M1



SrNo.: 4085 : CONTROL VALVE PIN ROUND HEAD
Ref. No.: 189364M91



SrNo.: 4086 : HYD. PUMP OSCILLATOR LINK SCREW
Ref. No.: 195568M1



SrNo.: 4087 : HYD. PUMP OSCILLATOR LINK PIN MF-1035
Ref. No.: 354187X1



SrNo.: 4088 : HYD. PUMP DRIVE RETAINER DISC MF-1035
Ref. No.: 180942M2



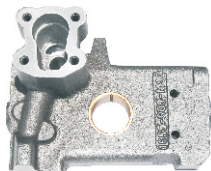
SrNo.: 4089 : HYD. PUMP CAM FLOWER MF-1035
Ref. No.: 180933M1



SrNo.: 4090 : PINION FLANGE (FOR 903249 BEARING)
Ref. No.: 184046M1



**Sr No.: 4091 : HYD. PUMP PLATE (SMALL) FRONT
WITH BUSH MF-245**
Ref. No.: 1665499M91



**Sr No.: 4092 : HYD. PUMP PLATE (BIG) REAR
WITH BUSH MF-245**
Ref. No.: 1665609M92



Sr No.: 4093 : HYD. LIFT PLUNGER MF-1035
Sr No.: 4093-A : HYD. LIFT PLUNGER (M. M. THREAD)
Ref. No.: 182580M1



Sr No.: 4094 : HYD. LIFT CLEVIS (FORGING) MF-1035
Sr No.: 4094-A : CLEVIS (FORGING) MF-1035 (M. M. THREAD)
Ref. No.: 180972M2



**Sr No.: 4095 : HYD. LIFT CLEVIS WITH PLUNGER
(FORGING) MF-1035**
Ref. No.: 180972M2/182580M1



**Sr No.: 4095-A : HYD. LIFT YOKE WITH ZOOLA ASSLY.
MF-1035**
Ref. No.:



Sr No.: 4096 : HYD. LIFT PLUNGER CUP STEEL MF-1035
Ref. No.: 182581M1



**Sr No.: 4097 : HYD. PUMP CONTROL VALVE LEVER
GUIDE BRACKET**
Ref. No.: 189368M01



**Sr No.: 4098 : HYD. PUMP FILTER HOUSING (ALUMINUM)
MF-1035**
Ref. No.: 189373M02



**Sr No.: 4099 : HYD. PUMP FILTER COVER STEEL N/ M.
MF-1035**
Ref. No.: 189367M02



Sr No.: 4102 : HYD. PUMP BODY OSCILLATOR LOCK EXTERNAL
Ref. No.: 195946M1



Sr No.: 4103 : HYD. PUMP BODY OSCILLATOR LOCK INTERNAL
Ref. No.: 195576M1

MASSEY FERGUSON TRACTOR PARTS



SrNo.: 4104 : HYD. LIFT HEAD LINK YOKE (JHoola)
Ref. No.: 180973M2



SrNo.: 4105 : CHAMBER VALVE PLUG LOCK MF-1035
Ref. No.:



SrNo.: 4106 : OIL ASSY. BUSH SET [SET OF 2 PCS.] (BRASS)
Ref. No.: 00050012/13



SrNo.: 4107 : HYD. LIFT PUMP DOWEL (PIN PUMP SUPPORT)
Ref. No.: 180905M01



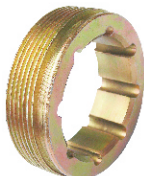
SrNo.: 4109 : GEAR BALL RETAINER PLATE MF-245
Ref. No.: 1860761M01



SrNo.: 4110 : HYD. LIFT PUMP ASSY. MF-245
(21 SPLINES) MARK III
Ref. No.: 1862693M93



SrNo.: 4111 : HYD. PUMP BALANCING TUBE MF-245
Ref. No.: 1866740M01



SrNo.: 4112 : HYD. LIFT CONTROL CHECK NUT MF.
Ref. No.: 180979M02



SrNo.: 4113 : HYD. PUMP CONTROL VALVE LEVER STUD
WITH NUT
Ref. No.: 826760M01/182007M01



SrNo.: 4114 : HYD. PUMP CONTROL VALVE SPRING MF-1035
Ref. No.: 180940M01



SrNo.: 4115 : HYD. PUMP FILTER (STRAINER) MF-1035
Ref. No.: 185551M92



SrNo.: 4116 : HYD. PUMP FILTER BODY (CAP & BOWL)
MF-1035
Ref. No.: 185839M91/185555M01



Sr No.: 4117 : HYD. LIFT LINK SHAFT MF-1035
Ref. No.: 180997M1



Sr No.: 4118 : REAR DRIVE COUPLING MF-1035
Ref. No.: 88069M02 / 183088M1



Sr No.: 4118-A : REAR DRIVE COUPLING (SHORT TYPE)
Ref. No.: 1871924M1



Sr No.: 4119 : HYD. LIFT PLUNGER CUP STEEL MF-245
Ref. No.: 886351M01



Sr No.: 4120 : HYD. LIFT PLUNGER MF-245
Sr No.: 4120-A : PLUNGER MF-245 M.M. THREAD
Ref. No.: 886348M02



Sr No.: 4121 : HYD. LIFT PUMP DOWEL (PIN PUMP SUPPORT)
MF-245
Ref. No.: 898643M01



Sr No.: 4122 : RAM CYLINDER PISTON MF-245 L/M.
(SINGLE GROOVE) (79 MM) STD
Sr No.: 4122-A : O/S. (10,20,30,40) Ref. No.: 1665737M91



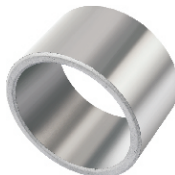
Sr No.: 4123 : RAM CYLINDER PISTON MF-245
(THREE GROOVE) (79 MM) STD
Sr No.: 4123-A : O/S. (10,20,30,40) Ref. No.: 1665737M91



Sr No.: 4124 : SQUARE PISTON RING (25 MM) MF-245/135
(SET OF 4 PCS.)
Ref. No.: 897493M01



Sr No.: 4125 : HYD. PUMP CONTROL VALVE SQUARE GUIDE
MF-135
Ref. No.:

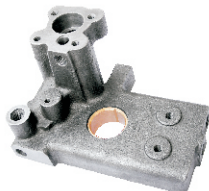


Sr No.: 4126 : HYD. LIFT ARM SHAFT BUSH (SINTERED) MF.
(SET OF 4 PCS.)
Ref. No.: 181018M01

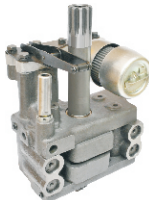


Sr No.: 4129 : HYD. PUMP PLATE (SMALL) FRONT
WITH BUSH & SCREW MF-135
Ref. No.: 897487M91

MASSEY FERGUSON TRACTOR PARTS



SrNo.: 4130 : HYD. PUMP PLATE (BIG) REAR
WITH BUSH & SCREW BIG MF-135
Ref. No.: 897488M91



SrNo.: 4131 : HYD. PUMP ASSLY. MF-135 MARK II
(10 SPLINE)
Ref. No.: 899205M1



SrNo.: 4132 : HYD. LIFTARM SHAFT BUSH (SINTERED)
MF-245
Ref. No.: 1870934M01



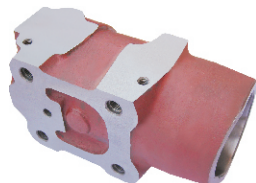
SrNo.: 4134 : HYD. PUMP FILTER HOUSING ALUMINIUM
MF-245
Ref. No.: 1870072M02



SrNo.: 4135 : HYD. LIFT RAM CYLINDER PISTON
(85.50 MM) (3 GROOVE)
Ref. No.: 1665738M91 / 897595M91



SrNo.: 4135-A : HYD. LIFT RAM CYLINDER PISTON
(85.50 MM) (1 GROOVE)
Ref. No.: 1665738M91 / 897595M91



SrNo.: 4136 : HYD. LIFT RAM CYLINDER MF. (85.50 MM)
DOUBLE BEARING
Ref. No.: 1671082M1 / 897594M2



SrNo.: 4137 : HYD. PUMP CAM SHAFT (21 SPLINES)
LONG END MF-399
Ref. No.: 3613194M1



SrNo.: 4138 : HYD. PUMP CAM SHAFT (21 LONG SPLINES)
MF-285 (3 GROOVE TYPE)
Ref. No.: 1871781M92



SrNo.: 4139 : HYD. PUMP CAM SHAFT (10 SPLINES)
Ref. No.: 899915M92



SrNo.: 4140 : HYD. PUMP PLATE ELEN SCREW BIG
Ref. No.:



SrNo.: 4141 : HYD. PUMP PLATE ELEN SCREW SMALL
Ref. No.:



**Sr No.: 4142 : HYD. PUMP PLATE BOLT (EN-19)
(SET OF 4 PCS.)**

Ref. No.:



**Sr No.: 4143 : HYD. PUMP CAM SHAFT (10 / 21 SPLINES)
MF-241**

Ref. No.:



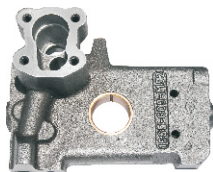
**Sr No.: 4143-A : HYD. PUMP CAM SHAFT (10 / 10 SPLINES)
MF-241 (LONG TYPE)**

Ref. No.:



**Sr No.: 4144 : HYD. LIFT TOP LINK BUSH (SET OF 2 PCS.)
FOR ZULLA**

Ref. No.: 180974M01



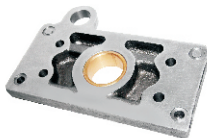
**Sr No.: 4145 : HYD. PUMP PLATE (BIG) REAR
WITH BUSH & SCREW MF-285 (SMALL HOLE)**

Ref. No.: 1665610M1



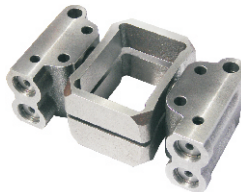
**Sr No.: 4146 : HYD. PUMP PLATE (BIG) REAR
WITH BUSH & SCREW MF-241**

Ref. No.:



**Sr No.: 4147 : HYD. PUMP PLATE (SMALL) FRONT
WITH BUSH & SCREW MF-241**

Ref. No.:



**Sr No.: 4148-B : HYD. PUMP MINOR KIT (S.G. IRON)
(23 MM) MF-241**

Ref. No.:



**Sr No.: 4149 : HYD. PUMP VALVE CHAMBER BODY MF-241
(23 MM)**

Ref. No.:



**Sr No.: 4150 : SQUARE PISTON MF-241 STD (23 MM)
Sr No.: 4150-A : O/S. (10/20/30)
Sr No.: 4150-B : (S.G. IRON)**



Sr No.: 4151 : PINION FLANGE MF-245

Ref. No.:



Sr No.: 4153 : CLUTCH HUB N/M. MF. DI

Ref. No.:

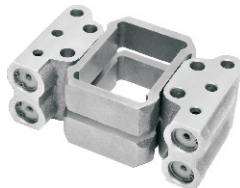
MASSEY FERGUSON TRACTOR PARTS



Sr No.: 4154 : CLUTCH HUB MF-245
Ref. No.: 886727M01



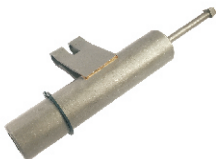
Sr No.: 4158 : HYD. LIFT CLEVIS YOKE MF-285
Ref. No.: 1863389M1



Sr No.: 4159-B : HYD. PUMP MINOR KIT (S.G. IRON)
J-SERIES (5 HOLE) (23 MM)
Ref. No.:



Sr No.: 4160 : HYD. PUMP OSCILATOR BODY MF-241
Ref. No.:



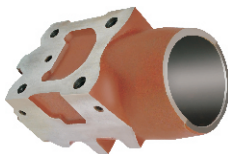
Sr No.: 4160-A : HYD. PUMP OSCILATOR BODY WITH ASSY.
MF-241
Ref. No.:



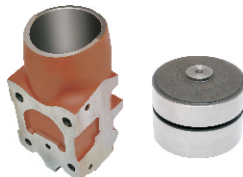
Sr No.: 4161 : HYD. PUMP ASSY. MF-241
(10 / 10) (10 / 21) (21 / 21) SPLINE
Ref. No.:



Sr No.: 4162 : RAM CYLINDER PISTON (SINGLE GROOVE) STD
MF-241
Ref. No.: 4246284M92



Sr No.: 4163 : HYD. LIFT RAM CYLINDER MF (93 MM)
(GRADED CASTING)
Ref. No.: 1693913M1 / 3599859M1



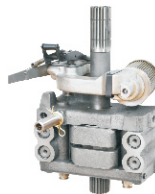
Sr No.: 4163-A : RAM CYLINDER WITH PISTON (93 MM)
(GRADED CASTING)
Ref. No.:



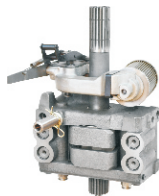
Sr No.: 4163-B : RAM CYLINDER (93 MM) S.G. IRON
(GRAY COLOR)
Ref. No.: 1693913M1 / 3599859M1



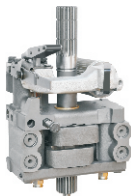
Sr No.: 4163-C : RAM CYLINDER WITH PISTON (93 MM)
S.G. IRON (GRAY COLOR)
Ref. No.:



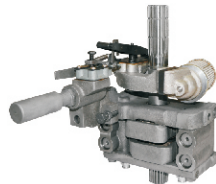
Sr No.: 4164 : HYD. LIFT PUMP ASSY. MF-240
(CURVE TYPE LEVER) (PRESSURE 2300-2800 P.S.I.)
Ref. No.: 3761330K91



**Sr No.: 4165 : HYD. LIFT PUMP ASSLY. MF-240
(CURVE TYPE LEVER) (PRESSURE 2800-3200 P.S.I.)**
Ref. No.: 3761332K91



**Sr No.: 4166 : HYD. LIFT PUMP ASSLY. MF-285
(WITHOUT PRESSURE CONTROL UNIT)**
Ref. No.: 1683301M92



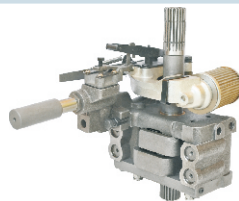
**Sr No.: 4166-A : HYD. LIFT PUMP ASSLY. MF-285
(WITH PRESSURE CONTROL UNIT) (3 GROOVE)**
Ref. No.: 1683301M92



Sr No.: 4167 : RELIEF VALVE ASSLY HEX BODY MF-399
Ref. No.: 3401834M91



Sr No.: 4168 : HYD. PUMP NON RETURN VALVE MF-245
Ref. No.: 1870811M01



**Sr No.: 4169 : HYD. LIFT PUMP ASSLY. WITH PRESSURE
CONTROL UNIT MF-245/240**
Ref. No.: 1872449M96/1870995M92



**Sr No.: 4170 : HYD. PUMP PRESSURE CONTROL UNIT
ASSLY. MF-135**
Ref. No.: 1680061M91



**Sr No.: 4171 : HYD. LIFT STAND PIPE LENGTH (249 MM)
WITH RING FITTING**
Ref. No.: 1869119M1



**Sr No.: 4172 : HYD. LIFT STAND PIPE LENGTH (317 MM)
WITH RING FITTING**
Ref. No.: 898229M1



**Sr No.: 4173 : HYD. PUMP CONTROL VALVE LEVER
MF-135**
Ref. No.: 897516M91

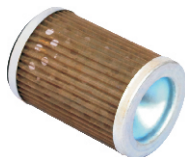


**Sr No.: 4174 : HYD. PUMP CONTROL VALVE LEVER
MF-245**
Ref. No.: 1868471M91



**Sr No.: 4175 : HYD. PUMP CONTROL VALVE LEVER
(CURVE TYPE) MF-245**
Ref. No.: 3610175M91

MASSEY FERGUSON TRACTOR PARTS



SrNo.: 4176 : HYD. PUMP FILTER (STRAINER) MF-245
Ref. No.: 1660715M92 / 1687042M91



SrNo.: 4177 : HYD. PUMP FILTER HOUSING COVER STEEL MF-245
Ref. No.: 1870807M1



SrNo.: 4178 : HYD. PUMP FILTER HOUSING COVER STEEL (N/M) MF-245
Ref. No.: 3599748M91



SrNo.: 4179 : RAM CYLINDER PISTON RING (SET OF 3 PCS.) (76 MM) MF-1035
Ref. No.: 184447M01 / 830741M91



SrNo.: 4180 : RAM CYLINDER PISTON RING (SET OF 3 PCS.) (79 MM) MF-245
Ref. No.: 897564M01



SrNo.: 4181 : HYD. LIFT POSITION CONTROL LINK ASSLY. MF-245
Ref. No.: 1661918M91



SrNo.: 4182 : HYD. LIFT DRAFT CONTROL LINK ASSLY. WITH DRAFT CONTROL ROD MF-245
Ref. No.: 1660324M91



SrNo.: 4183 : RAM CYLINDER PISTON (93 MM) STD
SrNo.: 4183-A : O/S. (10,20,30) (1 GROOVE)
Ref. No.:



SrNo.: 4183-B : RAM CYLINDER PISTON (93 MM) STD
SrNo.: 4183-C : O/S. (10,20,30) (3 GROOVE)
Ref. No.:



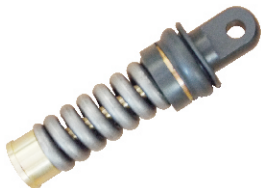
SrNo.: 4184 : HYD. LIFT PLUNGER SPRING MF.
Ref. No.: 182582M1 / 180998M1 / 1661755M2



SrNo.: 4185 : HYD. LIFT CLEVIS WITH LINK ASSLY. MF-245
SrNo.: 4185-A : HYD. LIFT CLEVIS WITH LINK ASSLY. MF-1035
Ref. No.:



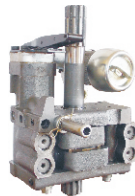
SrNo.: 4186 : HYD. LIFT CLEVIS ASSLY. MF-245, 240
SrNo.: 4186-A : HYD. LIFT CLEVIS ASSLY. MF-1035
Ref. No.:



Sr No.: 4187 : HYD. LIFT CLEVIS ASSLY. MF-285
Ref. No.:



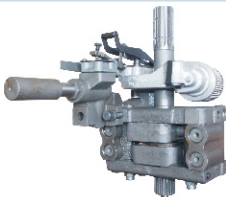
Sr No.: 4188 : HYD. PUMP WASHER FOR PLATE MF-245
Ref. No.: 1664589M1



Sr No.: 4189 : HYD. LIFT PUMP ASSLY. MARK-II (10 SPLINES)
EXTRA DISTANCE PLATE FITTED PRESSURE 2800-3200 PSI
Ref. No.: 1684582M92 / 1869615M91



Sr No.: 4190 : HYD. LIFT PUMP ASSLY. MARK-II (21 SPLINES)
EXTRA DISTANCE PLATE FITTED PRESSURE 2800-3200 PSI
Ref. No.: 1684583M92



Sr No.: 4191 : HYD. LIFT PUMP ASSLY. WITH PRESSURE
CONTROL UNIT (21 SPLINES) MARK III (CURVE TYPE LEVER)
Ref. No.: 3773700M92



Sr No.: 4192 : GEAR FORK BIG MF-241
Ref. No.: 4245958M93



Sr No.: 4193 : HYD. LIFT ARM SHAFT (THREE HOLE)
(37 SPLINES)
Ref. No.: 184359M2 \ 184359M91 \ 353558X1



Sr No.: 4193-A : HYD. LIFT ARM SHAFT (51 SPLINES)
MF-240, 245
Ref. No.: 899149M3 \ 897567M3



Sr No.: 4194 : HYD. LIFT RAM ROD MF-1035
MF-245, 240
Ref. No.: 191211M01



Sr No.: 4195 : HYDRAULIC LIFT PUMP ASSLY. MF-399
(CURVE TYPE LEVER)
Ref. No.: 3701159M91



Sr No.: 4196 : TRANSPORT LOCK VALVE ASSLY.
TAFE ALL MODEL
Ref. No.:



Sr No.: 4197 : HYD. CAM ASSY (HYDRAULIC LINKAGE LEVER)
Ref. No.: 1661547M92

MASSEY FERGUSON TRACTOR PARTS



Sr No.: 4198 : HYD PUMP SAFETY VALVE SOLID MF (270-280 BAR)
Ref. No.: 190856M1



Sr No.: 4199 : STAND PIPE [304 MM LENGTH]
Sr No.: 4200 : [311 MM LENGTH]
Sr No.: 4201 : [330 MM LENGTH] Ref. No.: 190856M1



Sr No.: 4202 : HYD. LIFT POSITION CONTROL LINK ASSLY MF-1035
Ref. No.: 180993M91



Sr No.: 4203 : HYD. LIFT DRAFT CONTROL LINK ASSLY MF-1035
Ref. No.: 180983M91



Sr No.: 4204 : HYD. LIFT POSITION CONTROL FORK MF-1035
Ref. No.: 190885M91



Sr No.: 4205 : HYD. LIFT DRAFT CONTROL FORK MF-1035
Ref. No.: 190884M91



Sr No.: 4206 : LIFT LEVER & CAM ASSY. MF-1035
Ref. No.: 1869093M93



Sr No.: 4207 : LEVER SUPPORT BRACKET
Ref. No.: 1661617M91



Sr No.: 4208 : HYD. LINK LINKAGE LEVER MF-1035
Ref. No.: 882514M91



Sr No.: 4209 : HYD. PUMP COUPLING [21 SPLINES]
Ref. No.: 1868538M4 \ 1868538M1



Sr No.: 4210 : HYD. PUMP COUPLING [10 SPLINES]
Ref. No.: 180926M1



Sr No.: 4211 : GEAR SHIFT LEVER CUP WITH CHECK NUT MF-1035
Ref. No.: 827690M1



Sr No.: 4212 : GEAR SHIFT LEVER CUP WITH CHECK NUT
MF-241 BIG
Ref. No.:



Sr No.: 4213 : FRONT WHEEL HUB WITH CAP
SUITABLE BEARING 15123/15245
SUITABLE BEARING 09067/09195 Ref. No.: 826797M91



Sr No.: 4214 : FRONT WHEEL HUB WITH CAP
SUITABLE BEARING 48548/48510
SUITABLE BEARING 09067/09195



Sr No.: 4214-A : FRONT WHEEL HUB WITH CAP
SUITABLE BEARING 48548/48510/11949/11910
Ref. No.: 886336M1 \ 886337M1 \ 886337M91



Sr No.: 4215 : RELIEF VALVE CASTING SHROUD MF-399
(CASTING BATTI)
Ref. No.:



Sr No.: 4216 : RAM CYLINDER PISTON RING SET (79MM)
(WHITE TEFLON & RUBBER RING) (SET OF 2 PCS)
Ref. No.: 3761478M1 \ 3761475M1



Sr No.: 4217 : RAM CYLINDER PISTON RING SET (85 MM)
(WHITE TEFLON & RUBBER RING) (SET OF 2 PCS)
Ref. No.: 3761477M1 \ 3761474M1 \ 1665984M91



Sr No.: 4218 : RAM CYLINDER PISTON RING SET (93 MM)
(BLACK TEFLON & RUBBER RING) (SET OF 2 PCS)
Ref. No.: 1693932M91



Sr No.: 4219 : RAM CYLINDER PISTON RING (85 MM)
STEEL (SET OF 3 PCS)
Ref. No.: 897597M1



Sr No.: 4220 : RAM CYLINDER PISTON RING (93 MM)
STEEL (SET OF 3 PCS)
Ref. No.:



Sr No.: 4221 : HYD. LIFT PUMP DOWEL & PIVOT
Ref. No.: 898937M1



Sr No.: 4222 : HYD. LIFT POSITION CONTROL LINK ASSLY.
MF-399
Ref. No.: 1690886M91

MASSEY FERGUSON TRACTOR PARTS



Sr No. : 4223 : HYD. LIFT DRAFT CONTROL LINK ASSLY WITH DRAFT CONTROL ROD MF-399
Ref. No. : 1690884M91



Sr No. : 4224 : HYD. PUMP PRESSURE CONTROL ALLUMINIUM BRACKET ASSY.
Ref. No. :



Sr No. : 4225 : HYD. LIFT HEAD QUADRANT ASSY. MF-1035
Ref. No. :



Sr No. : 4226 : GEAR BOX INPUT HOUSING 8 SPEED SINGLE CLUTCH
Ref. No. : 714447M1 \ 1860876M1 \ 1693837M1 \ 964903M91
1693833M91 \ 1860890M91



Sr No. : 4227 : GEAR BOX INPUT HOUSING MULTI POWER RETAINER
Ref. No. : 1860889M1 \ 1885502M91



Sr No. : 4228 : VALVE TAPPET (MAT. USE CHILDED CASTING)
Ref. No. : 740671M1 \ 31434163



Sr No. : 4229 : HYD. LIFT SIDE ARM (37 SPLINE)
Ref. No. : 713287M1 / 180910M1



Sr No. : 4230 : HYD. LIFT RAM ARM (42 SPLINE)
Ref. No. : 180970M2



Sr No.: 5002 : CONTROL VALVE ASSY. SWARAJ STD
Sr No.: 5002-A : O/S. (10, 20, 30, 40)
Ref. No.: N. P. N.



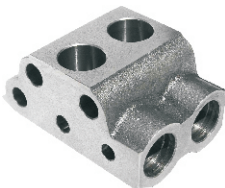
Sr No.: 5003 : UNLOAD VALVE ASSY. SWARAJ STD
Sr No.: 5003-A : O/S. (10, 20, 30, 40)
Ref. No.: N. P. N.



Sr No.: 5004 : RAM CYLINDER SAFETY VALVE 724/735
Ref. No.: 289600A



Sr No.: 5005 : HYD. LIFT RESPONSE VALVE SEAT
Ref. No.: 780305AN



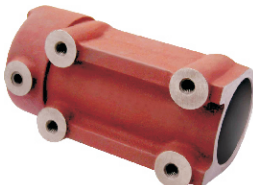
Sr No.: 5006 : HYD. PUMP VALVE CHAMBER BODY
Ref. No.: 281401/281407



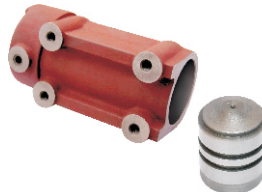
Sr No.: 5007 : HYD. LIFT SAFETY VALVE N/M.-855
Ref. No.:



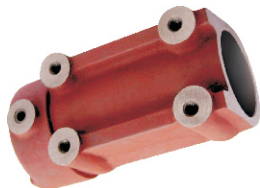
Sr No.: 5009 : HYD. PUMP CAM SHAFT SWARAJ
Ref. No.: P-281001



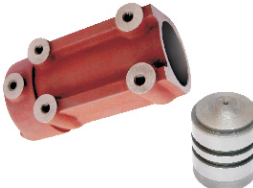
Sr No.: 5010 : RAM CYLINDER (2 HOLES) (RED)
Sr No.: 5010-B : RAM CYLINDER S.G. IRON [GRAY COLOUR]
Ref. No.: 0280002E



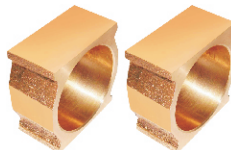
Sr No.: 5010-A : RAM CYLINDER WITH PISTON (2 HOLES) (RED)
Sr No.: 5010-C : RAM CYLINDER WITH PISTON S. G. IRON (GRAY)
Ref. No.:



Sr No.: 5011 : RAM CYLINDER (1 HOLE) (RED)
Sr No.: 5011-B : RAM CYLINDER S. G. IRON (1 HOLES) (GRAY)
Ref. No.: 282002



Sr No.: 5011-A : RAM CYLINDER WITH PISTON (1 HOLE) (RED)
Sr No.: 5011-C : RAM CYLINDER WITH PISTON S. G. IRON (GRAY)
Ref. No.:



Sr No.: 5012 : HYD. LIFT CAM BLOCK BUSH SET BRASS
Ref. No.: 281025

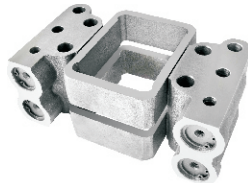
SWARAJ TRACTOR PARTS



Sr No.: 5013 : HYD. CAM BUSH BIG (BRASS)
Ref. No.: P281026



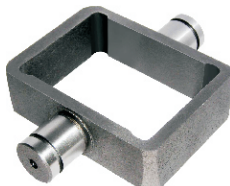
Sr No.: 5013-A : HYD. CAM BUSH SMALL (BRASS)
Ref. No.: P281025



Sr No.: 5014-B : HYD. PUMP MINOR KIT SWARAJ
(GRAY FINISH) S. G. IRON
Ref. No.: N. P. N.



Sr No.: 5015 : VALVE CHAMBER FULL KIT SWARAJ STD
Ref. No.:



Sr No.: 5016 : HYD. PUMP SQUARE PISTON SWARAJ STD
Sr No.: 5017 : O/S. (10, 20, 30, 40)
Ref. No.: 281027



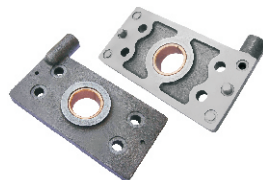
Sr No.: 5021 : SAFETY VALVE MODIFIED SWARAJ
(MM. THREAD)
Ref. No.:



Sr No.: 5024 : STEERING MAIN NUT ASSLY. (ZF TYPE)
Ref. No.:



Sr No.: 5025-A : HYD. LIFT DISTRIBUTOR ASSLY. SWARAJ
[O/M. 2 PIN]
Ref. No.:



Sr No.: 5026 : HYD. PUMP PLATE SMALL WITH BUSH SWARAJ
Ref. No.: P-281101



Sr No.: 5027 : HYD. PUMP PLATE BIG WITH BUSH SWARAJ
Ref. No.: P-281200



Sr No.: 5028 : HYD. PUMP ASSLY. SWARAJ
Ref. No.: P-281700



Sr No.: 5029 : RAM CYLINDER PISTON (3 GROOVE) STD
Sr No.: 5029-A : O/S. (10, 20, 30, 40, 50, 60)
Ref. No.: P-780570A



Sr No.: 5030 : RAM CYLINDER PISTON (2 GROOVE) STD
Sr No.: 5030-A : O/S. (10, 20, 30, 40, 50, 60)
Ref. No.: P-780570A



Sr No.: 5031 : FILTER (STRAINER) (TAFE TYPE)
Ref. No.: P-781100



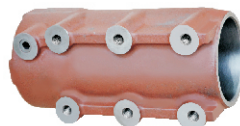
Sr No.: 5035 : HYD. LIFT FILTER BASE (TAFE TYPE PUMP) SWARAJ
Ref. No.: P-781001



Sr No.: 5036 : HYD. LIFT DISTRIBUTOR ASSLY. SWARAJ-744
Ref. No.: P-783220C



Sr No.: 5037 : RAM CYLINDER SWARAJ (90 MM) N/M. LONG
Ref. No.:



Sr No.: 5038 : RAM CYLINDER SWARAJ (90 MM) N/M. SHORT
Ref. No.:



Sr No.: 5039 : RAM CYLINDER PISTON SWARAJ (90 MM) STD
Sr No.: 5039-A : O/S. (10, 20, 30)
Ref. No.:



Sr No.: 5040 : CONTROL VALVE ASSLY. SWARAJ-744 STD
Sr No.: 5040-A : O/S. (10, 20, 30)
Ref. No.:



Sr No.: 5041 : UNLOAD VALVE ASSLY. SWARAJ-744 STD
Sr No.: 5041-A : O/S. (10, 20, 30)
Ref. No.:

ESCORT TRACTOR PARTS



Sr No.: 6001 : PUSH GUIDE (VALVE TAPPET)
Ref. No.: 500056



Sr No.: 6002 : HYD. LIFT INSERT WITH SEAT
Ref. No.: { 5016402.0 } (5001486.0)



Sr No.: 6003 : HYD. LIFT SAFETY VALVE ASSLY. (TESTED)
Ref. No.: 42372260



Sr No.: 6009 : HYD. LIFT SEAT. (LONG)
Ref. No.: 5016163



Sr No.: 6010 : HYD. LIFT BALL SEAT (SHORT)
Ref. No.: 5001480



Sr No.: 6011 : CONTROL VALVE ASSLY. WITH SLEEVE STD
Sr No.: 6011-A : O/S. (10, 20, 30, 40, 50, 60)
Ref. No.: 5016153



Sr No.: 6012 : HYD. LIFT DISTRIBUTOR OR CONTROL SHAFT STD
Ref. No.: 5016256.1



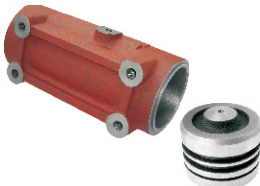
Sr No.: 6015 : HYD. LIFT DISTRIBUTOR ASSLY.
Ref. No.: 42372010



Sr No.: 6016 : HYD. LIFT DISTRIBUTOR PLUG ASSLY. ESCORT
Ref. No.: 42.372.040



Sr No.: 6017 : HYD. LIFT RAM CYLINDER ONLY. ESCORT
Ref. No.: 5016178



Sr No.: 6018 : RAM CYLINDER WITH PISTON ESCORT
Ref. No.:



Sr No.: 6019 : RAM CYLINDER PISTON ESCORT STD
Sr No.: 6020 : O/S. (10, 20, 30, 40, 50, 60)
Ref. No.: 5016246



Sr No.: 6021 : DISTRIBUTOR REPAIR KIT ESCORT
Ref. No.:



**Sr No.: 6022 : HYD. LIFT DISTRIBUTOR SPRING
(SET OF 5 PCS.)**
Ref. No.:



Sr No.: 6025 : HYD. LIFT DISTRIBUTOR LEVER ESCORT
Ref. No.: 50161680



**Sr No.: 6026 : HYD. LIFT DISTRIBUTOR REPAIR KIT
WITH SPRING**
Ref. No.:

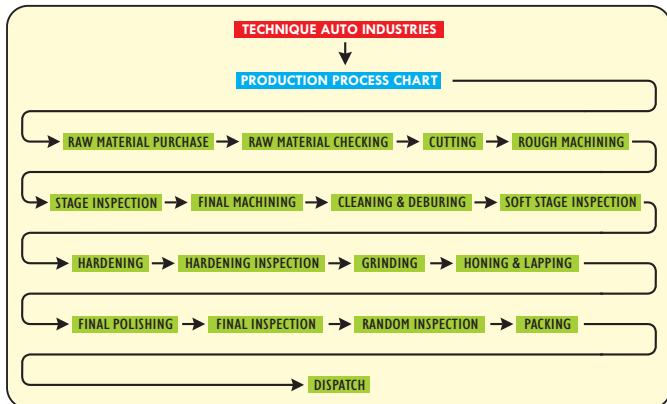


Sr No.: 6027 : HYD. LIFT RAM CYLINDER PISTON (70 MM)
Ref. No.: 50020310

Starting with procuring standard raw materials from selected suppliers the initial production process commences.

All the materials are procured as per specified grade and standards, then tested physically and chemically. All the bars are checked for cracks and then only the cutting starts.

Machining is done strictly according to specifications and accuracy standards, once the machining is over the burrs are removed by filing and grinding.



Once the burrs removal is over the cleaning and soft stage inspection take place. After that hardening process take place for those parts which requires it.

After hardening, all the parts are cleaned properly and grinding of surface, outer and inner as per requirements take place. Lapping operation done as per requirements.

After all these processes final cleaning, inspection and random inspection take place.

Once all these processes are over, weatherproofing and packing take place to keep all the products clean, rust free and free of atmospheric effects.



MANUFACTURING FACILITY

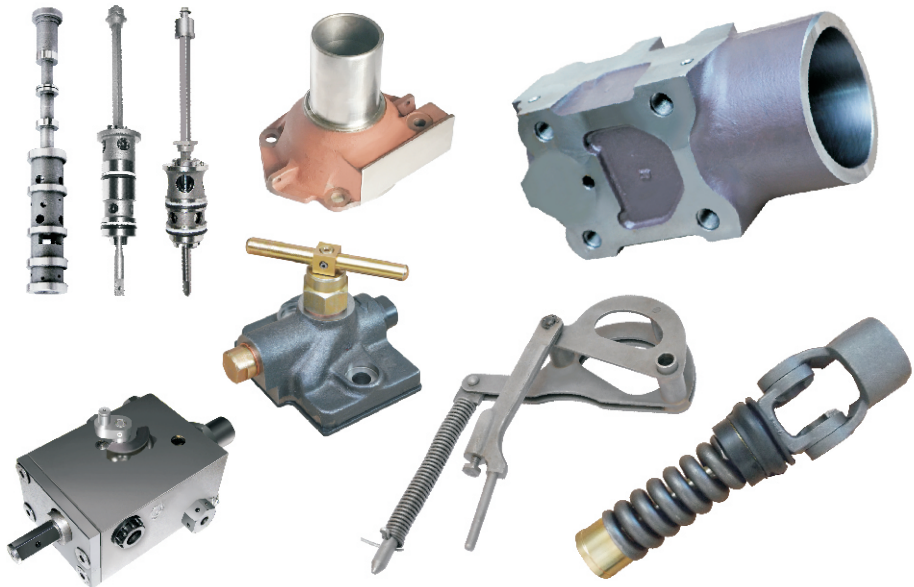


Built on 27000 Sq. feet of industrial land with thoroughly stabilized ground level with cement and concrete flooring to eliminate vibration in machining process. Thoroughly RCC Beam & Column Structure for durability, covered with RCC slab to overcome accidental Roof breakage and atmospheric adverse effects. Specially built stock and material storage to eliminate rust and cast problems on manufactured product stock and raw material stock. Management and administration department in the same complex to eliminate time waste and increasing managerial efficiencies.





HYDRAULIC LIFT & OTHER PARTS FOR ALL THE TRACTORS



TECHNIQUE

Auto Industries

Enhanced Quality @ Reduced Cost

Specialist in :Tractor Parts (Hydraulic & Other Parts)

Sadbhavna Industrial Area, Opp. Hotel Krishna Park,
Near Rolex Rings Pvt. Ltd., 27 N/H Gondal Road, Kothariya,
Rajkot (Gujarat) India. **Office** : + 91 90167 09915

Email : info@techniqueauto.com **URL** : www.techniqueauto.com