

COMPACT CYLINDER Ø 12 mm TO 100 mm

SERIES SDVU

MALE SHAFT

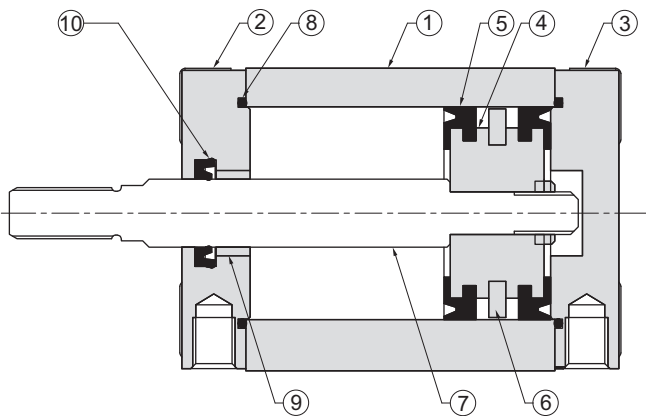


FEATURES

- Compact/ Short stroke cylinder
- 50% reduced size against other series
- Permanent magnet on the cylinder piston
- High speed, non rotating option available
- Male/ Female option available
- End plate shock absorber
- Noiseless end stopping

2

CONSTRUCTION



MATERIAL OF CONSTRUCTION

PART No.	PART	QTY.
11	Hex. Socket Screw	8
10	Rod Seal	1
9	Bush	1
8	Cover Seal	2
7	Hex. Nut	1
6	Piston Rod	1
5	Magnet	1
4	Piston Seal	2
3	Rear Cover	1
2	Front Cover	1
1	Body	1

COMPACT CYLINDER Ø 12 mm TO 100 mm

SERIES SDVU

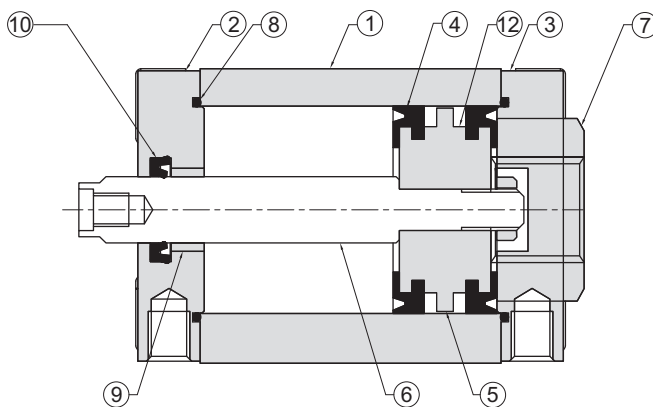
FEMALE SHAFT



FEATURES

- Compact/ Short stroke cylinder
- 50% reduced size against other series
- Permanent magnet on the cylinder piston
- High speed, non rotating option available
- Male/ Female option available
- End pad shock absorber
- Noiseless end stopping

CONSTRUCTION



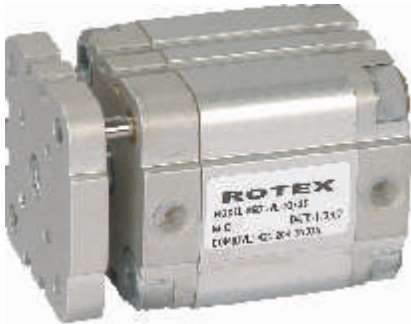
MATERIAL OF CONSTRUCTION

PART No.	PART	QTY.
11	Hex. Socket Screw	8
10	Rod Seal	1
9	Bush	1
8	Cover Seal	2
7	Hex. Nut	1
6	Piston Rod	1
5	Magnet	1
4	Piston Seal	2
3	Rear Cover	1
2	Front Cover	1
1	Body	1

COMPACT CYLINDER Ø 12 mm TO 100 mm

SERIES SDVUL

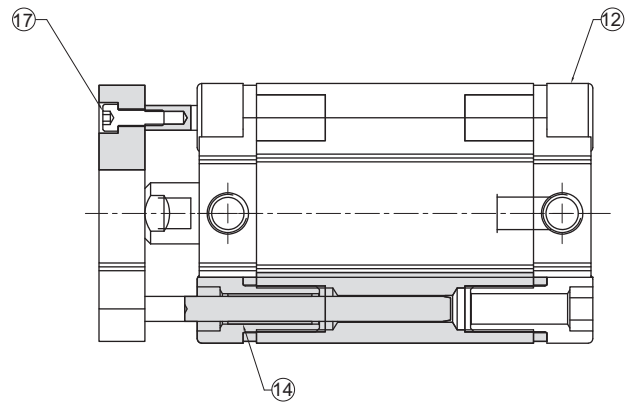
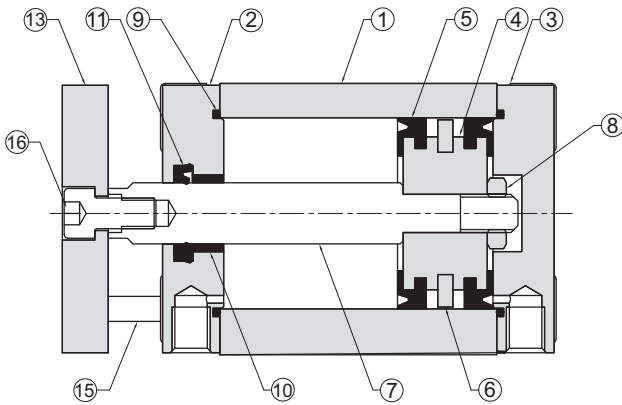
NON ROTATING/ GUIDED



FEATURES

- Compact/ Short stroke cylinder
- 50% reduced size against other series
- Permanent magnet on the cylinder piston
- High speed, non rotating option available
- Male/ Female option available
- Non rotating, guided by bronze bushes
- larger load carrying capacity
- End pad shock absorber
- Noiseless end stopping

2



MATERIAL OF CONSTRUCTION

PART No.	PART	QTY.
16	Hex. Socket Screw	2
15	Hex. Socket Screw	1
14	Guide Rod	2
13	Bush	2
12	Guide Flange	1
11	Hex. Socket Screw	8
10	Rod Seal	1
9	Bush	1
8	Cover Seal	2
7	Hex. Nut	1
6	Piston Rod	1
5	Magnet	1
4	Piston Seal	2
3	Rear Cover	1
2	Front Cover	1
1	Body	1

COMPACT CYLINDER Ø 12 mm TO 100 mm

SERIES SDVU

SERIES SDVUL

ORDERING CODE

	TYPE	MODEL	ROD END	BORE	STROKE
	1	2	3	4	5
1	TYPE	SDVU SDVUL	Standard Guided		
2	MODEL	D E EA	Double Acting Single Acting, Spring at Rod Side Single Acting, Spring at Rear Cover		
3	ROD END	- M F	Guided Cylinder Male Female		
4	BORE	12 16 20 25 32 40 50 63 80 100			
5	STROKE	Refer Table below			

Double Acting (D)

BORE (mm)	STANDARD STROKE (mm)
12	5,10,15,20,25,30,40
16	5,10,15,20,25,30,40
20	5,10,15,20,25,30,40,50
25	5,10,15,20,25,30,40,50
32	5,10,15,20,25,30,40,50,60,80,125,150
40	5,10,15,20,25,30,40,50,60,80,125,150,200
50	5,10,15,20,25,30,40,50,60,80,125,150,200
63	5,10,15,20,25,30,40,50,60,80,125,150,200
80	5,10,15,20,25,30,40,50,60,80,125,150,200
100	5,10,15,20,25,30,40,50,60,80,125,150,200

Single Acting (E/EA)

BORE (mm)	STANDARD STROKE (mm)
12	5,10
16	5,10,15,20,25
20	5,10,15,20,25
25	5,10,15,20,25
32	5,10,15,20,25
40	5,10,15,20,25
50	5,10,15,20,25
63	5,10,15,20,25
80	5,10,15,20,25
100	5,10,15,20,25

Other strokes available on request

ORDERING EXAMPLE

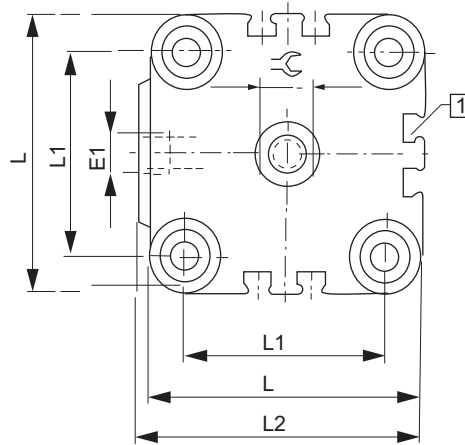
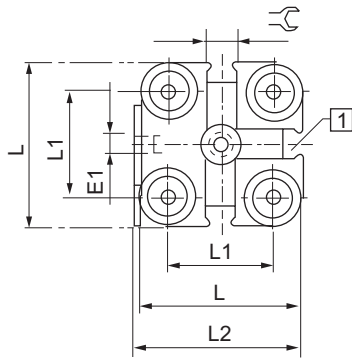
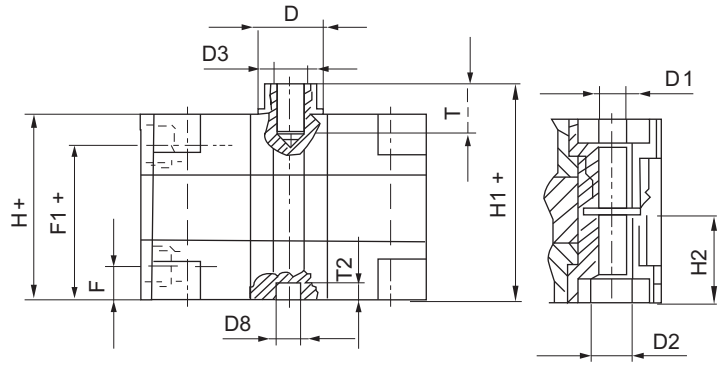
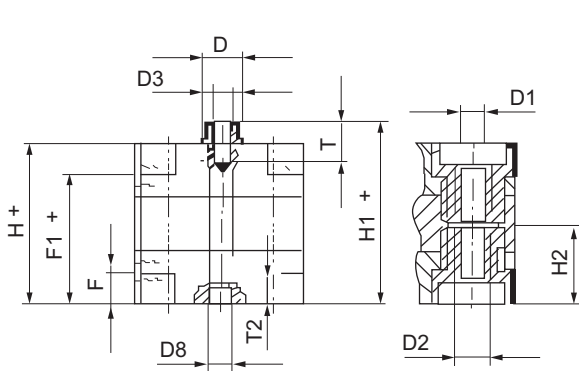
- SDVU-D-F-32/50
32 mm diameter double acting magnetic cylinder with female rod & stroke 50 mm
- SDVUL-D-50/100
50 mm diameter double acting magnetic guided cylinder with 100 mm stroke

COMPACT CYLINDER Ø 12 mm TO 100 mm

SERIES SDVU

TYPE SDVU-12 TO 25-P-A

TYPE SDVU-32 TO 100-P-A



DIMENSIONS (mm)

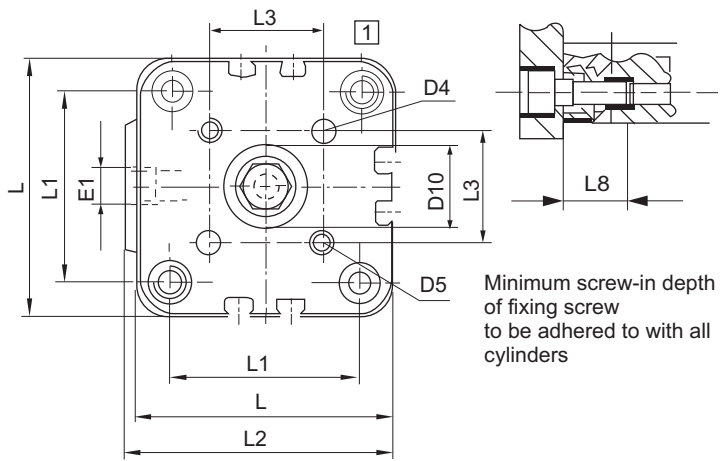
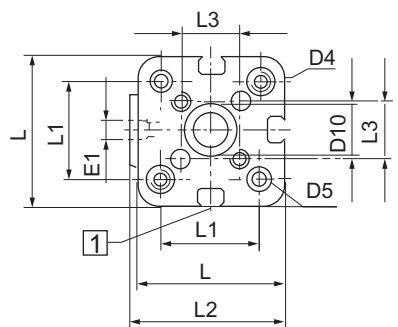
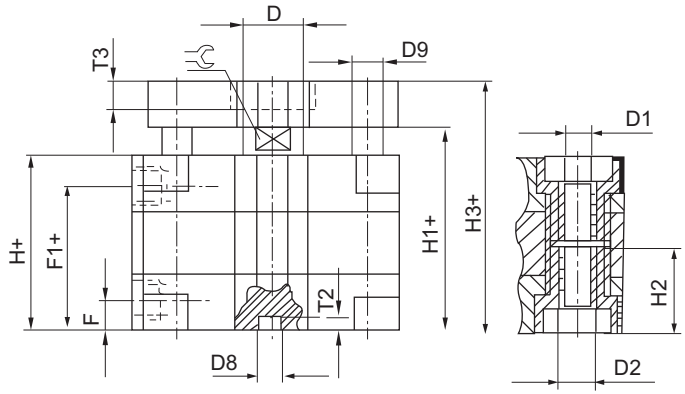
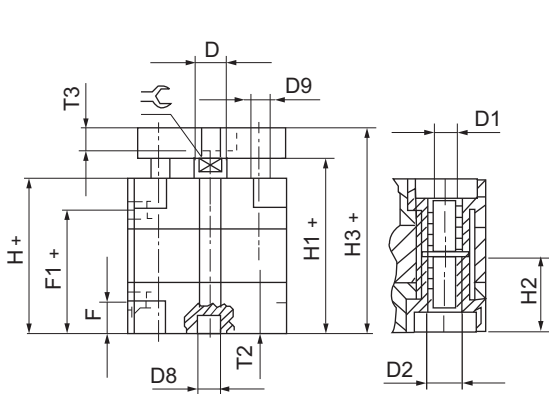
Bore Ø	D	D1	D2	D3	D4	D5	D8	D9	D10	E1	F	F1	H	H1	H2	H3	L	L1	L2	L3	L8	SW	T	T2	T3
12	6	3.2	M4	M3	3	M3	6	4	6	M5	6.5	28.5	35	42.5	16	47.5	29	18	30	9.9	16	5	6	4	3.5
16	8	3.2	M4	M4	3	M3	6	4	8	M5	6.6	28.5	35	43.5	16	48.5	29	18	30	9.9	16	7	8	4	3.5
20	10	4.2	M5	M5	4	M3	6	6	10	M5	8	31	39	46	18.5	54	36	22	37.5	12	18	8	8	4	3.5
25	10	4.2	M5	M5	5	M4	6	6	14	M5	8	31	39	46	18.5	54	40	26	41.5	15.6	18	8	8	4	4.5
32	12	5.2	M6	M6	5	M4	6	6	17	G1/8	6.5	35.5	42	49	21.5	59	50	32	52	19.8	20	10	10	4	5.5
40	12	5.2	M6	M6	5	M4	6	6	17	G1/8	7.5	38	45.5	54	21.5	64	60	42	62.5	23.3	20	10	10	4	5.5
50	16	6.2	M8	M8	6	M6	6	8	22	G1/8	7.5	38	45.5	55.5	23.5	67.5	68	50	71	29.7	20	13	12	4	7
63	16	8.5	M10	M8	6	M6	8	8	22	G1/8	7.5	43.5	51	61.5	28.5	73.5	87	62	91	35.4	25	13	12	4	7
80	20	8.5	M10	M10	8	M8	8	12	28	G1/8	9.5	52.5	62	75	28.5	89	107	82	111	46	25	17	16	4	9
100	25	8.5	M10	M12	10	M8	8	12	30	G1/4	10.5	57.5	68	83.5	28.5	97.5	128	103	133	56.6	25	22	20	4	9

COMPACT CYLINDER Ø 12 mm TO Ø100 mm

SERIES SDVUL

TYPE SDVUL-12 TO 25-P-A

TYPE SDVUL-32 TO 100-P-A



DIMENSIONS (mm)

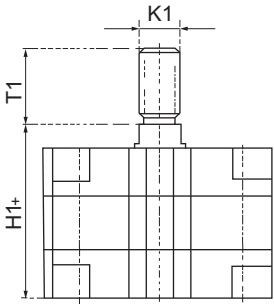
Bore Ø	D	D1	D2	D3	D4	D5	D8	D9	D10	E1	F	F1	H	H1	H2	H3	L	L1	L2	L3	L8	SW	T	T2	T3
12	6	3.2	M4	M3	3	M3	6	4	6	M5	6.5	28.5	35	42.5	16	47.5	29	18	30	9.9	16	5	6	4	3.5
16	8	3.2	M4	M4	3	M3	6	4	8	M5	6.6	28.5	35	43.5	16	48.5	29	18	30	9.9	16	7	8	4	3.5
20	10	4.2	M5	M5	4	M3	6	6	10	M5	8	31	39	46	18.5	54	36	22	37.5	12	18	8	8	4	3.5
25	10	4.2	M5	M5	5	M4	6	6	14	M5	8	31	39	46	18.5	54	40	26	41.5	15.6	18	8	8	4	4.5
32	12	5.2	M6	M6	5	M4	6	6	17	G1/8	6.5	35.5	42	49	21.5	59	50	32	52	19.8	20	10	10	4	5.5
40	12	5.2	M6	M6	5	M4	6	6	17	G1/8	7.5	38	45.5	54	21.5	64	60	42	62.5	23.3	20	10	10	4	5.5
50	16	6.2	M8	M8	6	M6	6	8	22	G1/8	7.5	38	45.5	55.5	23.5	67.5	68	50	71	29.7	20	13	12	4	7
63	16	8.5	M10	M8	6	M6	8	8	22	G1/8	7.5	43.5	51	61.5	28.5	73.5	87	62	91	35.4	25	13	12	4	7
80	20	8.5	M10	M10	8	M8	8	12	28	G1/8	9.5	52.5	62	75	28.5	89	107	82	111	46	25	17	16	4	9
100	25	8.5	M10	M12	10	M8	8	12	30	G1/4	10.5	57.5	68	83.5	28.5	97.5	128	103	133	56.6	25	22	20	4	9

COMPACT CYLINDER Ø 12 mm TO 100 mm

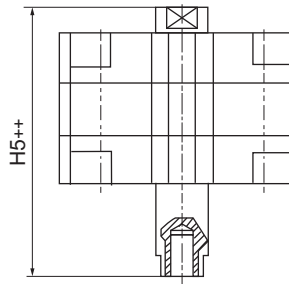
SERIES SDVU

SERIES SDVUL

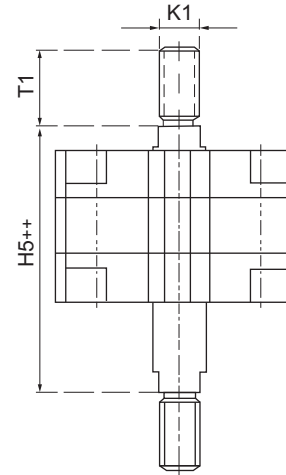
SDVU-A-P



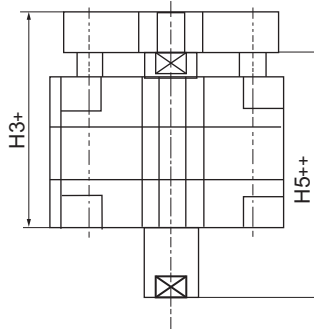
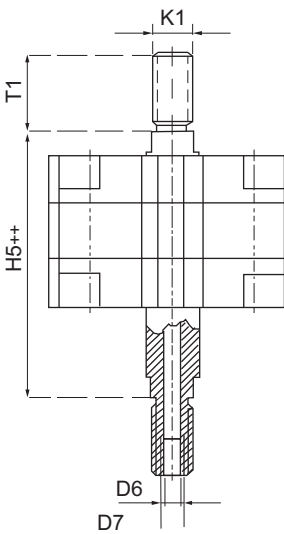
Type SDVU-P-A-S



Type SDVU-A-P-A-S



Type SDVU-A-P-A-S-DS



+ = Plus stroke length
++ = Plus 2 x stroke length

DIMENSIONS (mm)

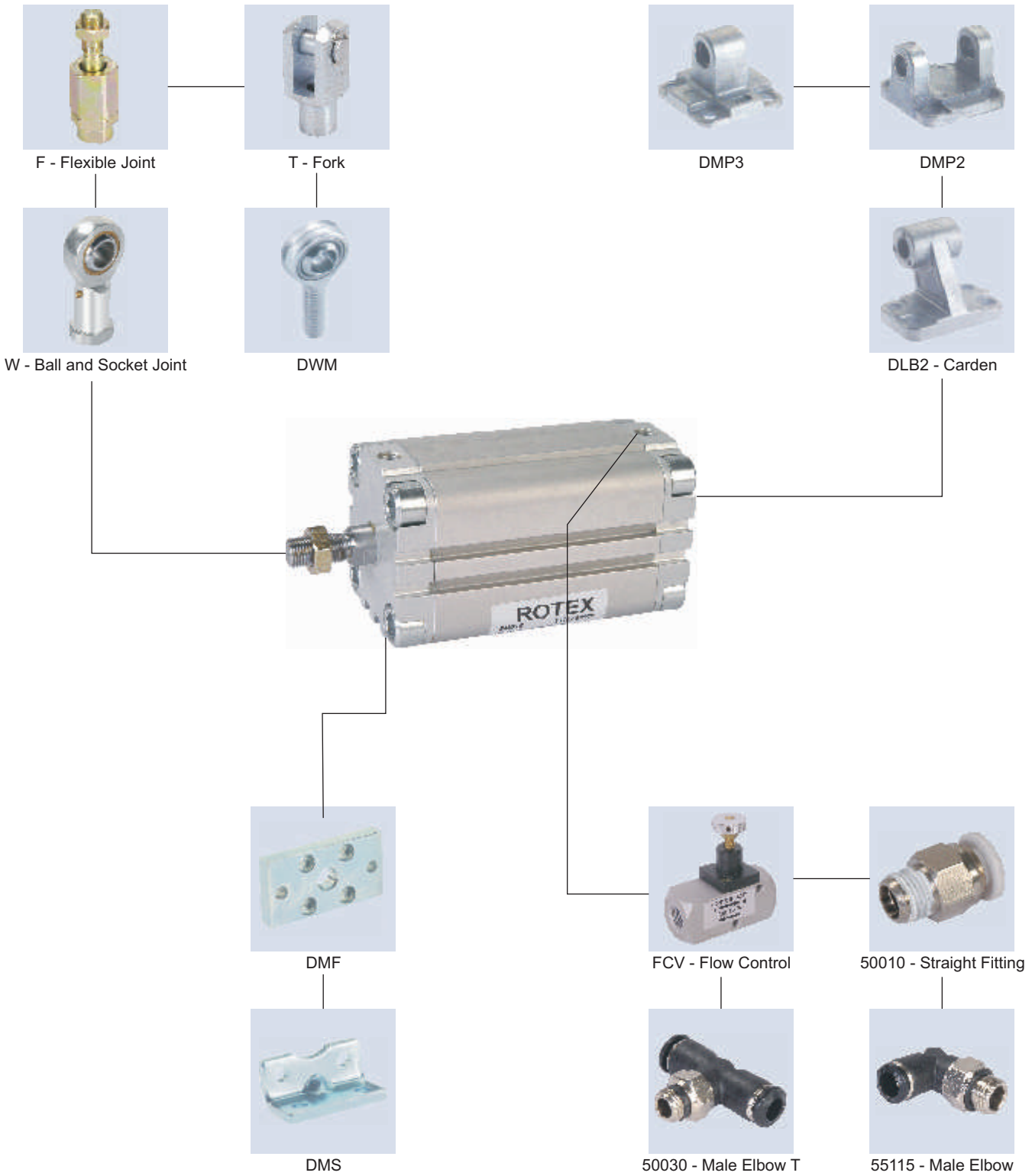
Bore Ø	B	D Ø	D6 Ø	D7	H1	H3	H5	K1	T1
12	5.5	6	2.3	-	42.5	48.5	47	M6	16
16	7	8	3.2	-	42.5	48.5	47	M8	20
20	9	10	3.8	-	42.5	50.5	47	M10x1.25	22
25	9	10	3.8	-	45	53	50.5	M10x1.25	22
32	10	12	4.5	-	50.5	60.5	56.5	M10x1.25	22
40	10	12	4.5	-	52	62	58.5	M10x1.25	22
50	12	16	6	-	53	65	60.5	M12x1.25	24
63	12	16	6	-	57.5	69	65	M12x1.25	24
80	16	20	8.0	G1/8	64	78	72	M16x1.5	32
100	20	25	11.7	G1/4	76.5	90.5	86.5	M20x1.5	40

COMPACT CYLINDER Ø 12 mm TO Ø100 mm

SERIES SDVU

SERIES SDVUL

MOUNGING OVERVIEW



2

COMPACT CYLINDER Ø12 mm TO Ø100 mm

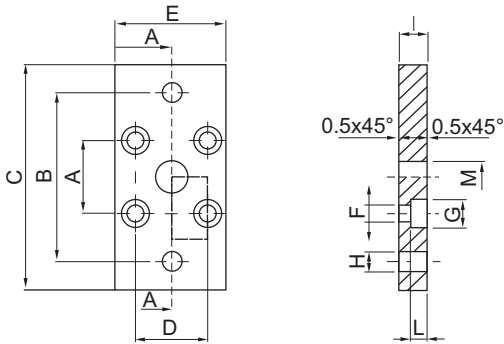
SERIES SDVU

SERIES SDVUL

COMPACT CYLINDER MOUNTINGS

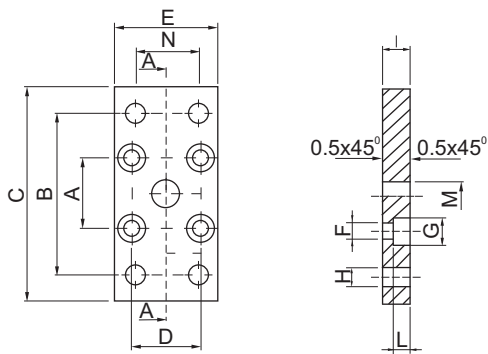
DMF - FRONT/ REAR FLANGE

2



Ømm	A	B	C	D	E	F	G	H	I	L	M
12-16	18	43	55	18	29	4.5	9	5.5	10	5.4	10
20	22	55	70	22	36	5.5	10	6.6	10	5.4	12
25	26	60	76	26	40	5.5	10	6.6	10	5.4	12

DMF - FRONT/ REAR FLANGE



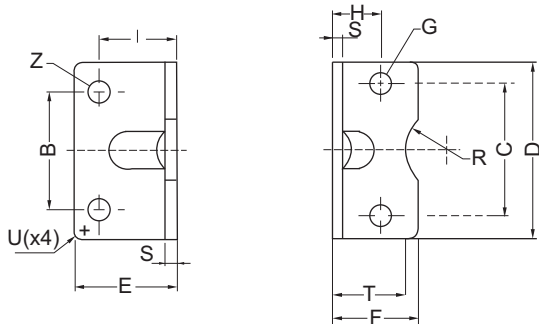
Ømm	A	B	C	D	E	F	G	H	I	L	M	N
32	32	65	80	32	50	6.6	11	7	10	6.4	14	36
40	42	82	102	42	60	6.6	11	9	10	6.4	14	36
50	50	90	110	50	68	9	15	9	12	8.6	18	45
63	62	110	130	62	87	11	15	9	15	10.6	18	50
80	82	135	160	82	107	11	18	12	15	10.6	23	63
100	103	163	190	103	128	11	18	14	15	10.6	28	75

COMPACT CYLINDER Ø12 mm TO Ø100 mm

SERIES SDVU

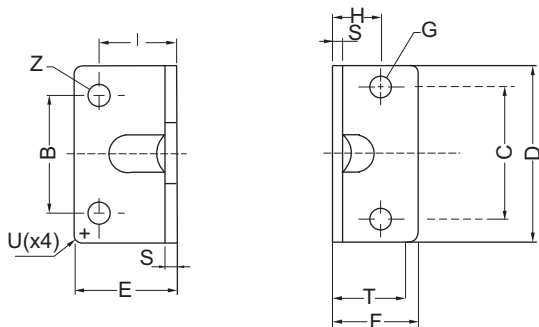
SERIES SDVUL

DMS - LOW RISE PEDESTAL



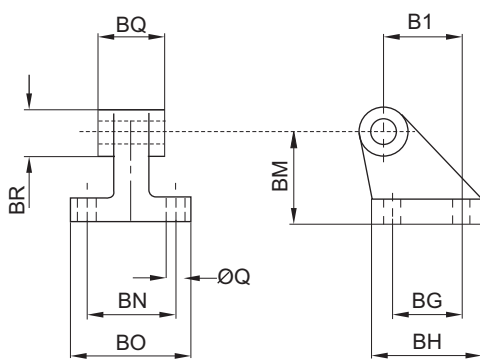
Ømm	C	B	D	E	F	G	H	I	S	T	R	U	Z
12-16	18	18	30	17.5	17.5	4.4	13	13	3	15	9	2	5.5
20	22	22	36	22	22	5.4	16	16	4	17	10	2	6.6
25	26	26	40	22	23	5.4	17	16	4	19	11	2	6.6
32	32	32	50	26	24	6.6	16	18	5	20	12	2	6.6

DMSL - LOW RISE PEDESTAL



Ømm	C	B	D	E	F	G	H	I	S	U	Z
40	42	42	60	28	29.5	6.6	21.5	20	5	5	9
50	50	50	68	32	30	9	22	24	6	5	9
63	62	62	84	39	39	9	28.5	27	6	5	11
80	82	82	102	36.5	36.5	11	24.5	30	8	5	11
100	103	103	123	38.5	38.5	11	26.5	33	8	5	13.5

DLB2 - COUNTER HINGE FOR MP2



Ømm	Q	BG	BH	B1	BM	BN	BO	BQ	BR
32	6.6	18	31	21	32	38	51	26	20
40	6.6	22	35	24	36	41	54	28	22
50	9	30	45	33	45	50	65	32	26
63	9	35	50	37	50	52	67	40	30
80	11	40	60	47	63	66	86	50	30
100	11	50	70	55	71	76	96	60	38

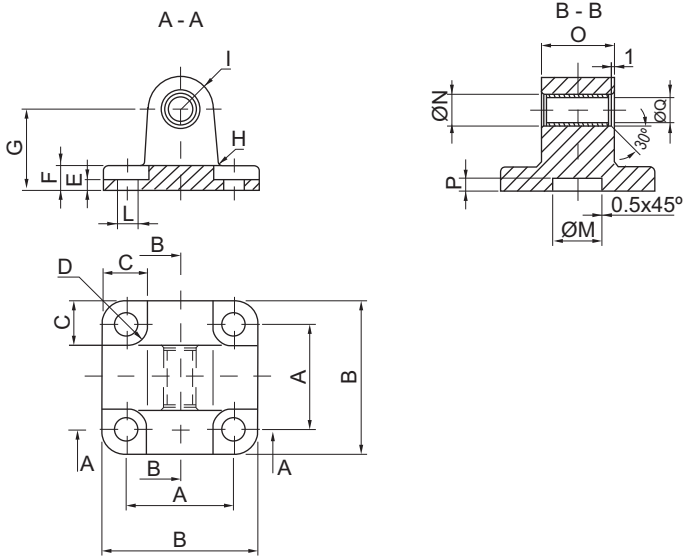


COMPACT CYLINDER Ø12 mm TO Ø100 mm

SERIES SDVU

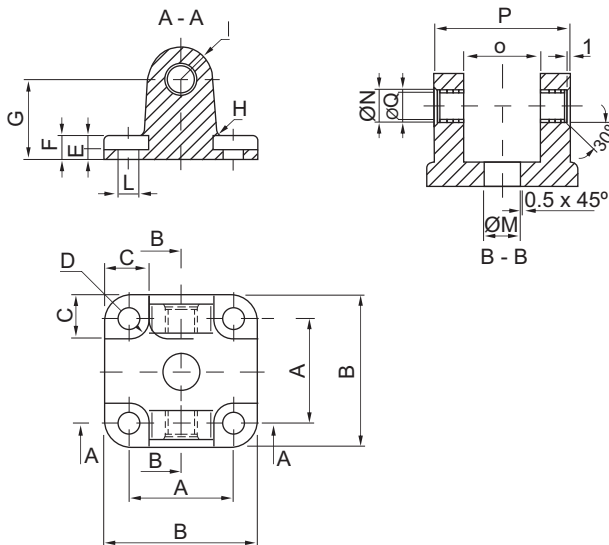
SERIES SDVUL

DMP3 - MALE HINGE



Ømm	A	B	C	D	E	F	G	H	I	L	M	N	O	P	Q
12-16	18	27	10	4.5	2.6	6	16	2	6	4.5	10	8	12	3	6
20	22	34	11	5	2.6	6	20	2	8	5.5	12	10	16	3	8
25	26	38	11	5	2.6	6	20	2	8	5.5	12	10	16	3	8

DMP2 - FEMALE HINGE



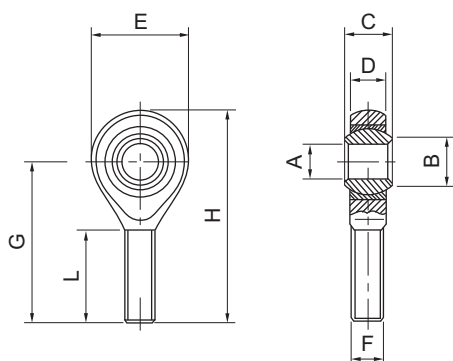
Ømm	A	B	C	D	E	F	G	H	I	L	M	N	O	P	Q
32	32	48	13.5	5.5	5.5	9	22	2.5	10	6.6	14	12	26	45	10
40	42	58	13.5	5.5	5.5	9	25	2.5	12.5	6.6	14	14	28	52	12
50	50	66	15.5	7.5	6.5	11	27	2.5	12.5	9	18	14	32	60	12
63	62	83	18	7.5	6.5	11	32	4	15	9	18	18	40	70	16
80	82	102	19	9	1	13	36	4	15	11	23	18	50	90	16
100	103	123	19	9	10	15	41	4	20	11	28	23	60	110	20

COMPACT CYLINDER Ø12 mm TO Ø100 mm

SERIES SDVU

SERIES SDVUL

DWM - MALE ROD ENDS



Ømm	A	B	C	Ø	D	E	F	G	H	L
20-25	5	7.5	8	11.11	7.5	18	M5X0.8	33	42	19
32-40	6	8.9	9	12.7	7.5	20	M6X1	36	46	21
50-63	8	10.4	12	15.88	9.5	24	M8X1.25	42	54	25
80	10	12.9	14	19.05	11.5	30	M10X1.5	48	63	28
100	12	15.4	16	22.23	12.5	34	M12X1.75	54	71	32

REED SWITCH FOR Ø 12 - Ø 100

MODEL PNT



APPLICATION

- The position of the piston of the ROTEX cylinder can be detected by installing a Reed Switch. The switch is a non contact Reed type design and is in Normally Open position. The switch closes when it approaches the magnetic field. A permanent magnet is fitted on the piston rod

FEATURES

- Resin body, with adjustable linear positions
- High glow LED, suitable for outdoor application
- IP65 Construction
- Universal for AC/ DC

TECHNICAL SPECIFICATION

Medium	Magnetic field	Max. switching current	200 mA for DC. 20 mA for AC.
Design	Non contact Reed Switch, electronics, & LED	Max. speed	3 m/ sec
Mounting	Clamp fixed on cylinder, adjustment by screw	Cyclic speed	800 Hz
Connection	2 wire cable (Std.1 m.)	Switching life	10 ⁸ Cycle
Supply voltage	10V -220V DC, 10V -220V AC	Cable connection	Option 2m :- M2 3m :- M3
		Temperature range	- 40 °C to 60 °C
		Repeatability	± 0.1mm

ORDERING CODE

- PNT - M2 -32 Reed Switch for 32 mm bore Cylinder with 2 metre cable
 PNT - 40 Reed Switch for 40 mm bore Cylinder with 1 metre cable