



Torsion Testing Machine

Model - TWISTO^o-100

Technical Description :

The Solution is designed for conducting torsion test and twist on various metal wires, tubes, sheet material.

Torque Measurement is by torque transducer system which can be applied on the specimen by geared motor.

Auto graphic recorder gives the relation between torque and angle of twist by means of control electronics.

Accuracy of torque indication is $\pm 1\%$ of the true torque.

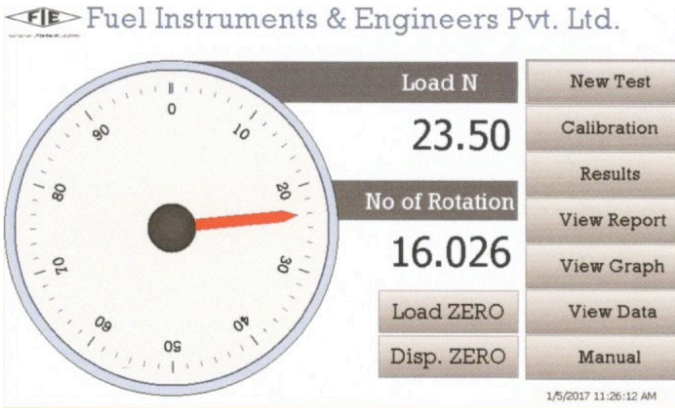
The whole system is equipped with safety guard and safety controls.

Features :

- Equipped with 100 N-m torque cell which provides higher accuracy of torque.
- Self aligned gripping device for specimen of various diameter or thickness.
- PLC based instrumentation to measure, display & store Torque, Angle of Twist & its relations .
- In Built HMI includes torsion testing machine software gives graphical data plots and relations between torque and angle of twist.
- Safety interlock for overload through software.
- Universal application in R & D, Education, Quality Control & Production for torsion test.
- Graphical representation of torque vs no. of turns.
- Range selection of variable speed - 2 to 100 rpm.

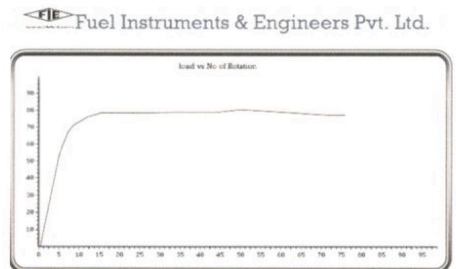
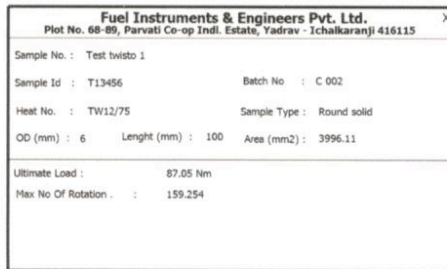
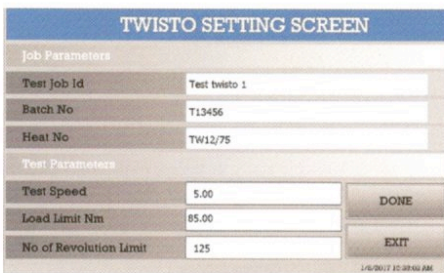


Built – In Electronic Control Panel :



PLC based built in panel incorporating state of art technology with following features

- 7" LCD front touch screen Display
- Data Entry of test parameters including testing speed, specimen size etc.
- Online graph of Torque Vs. Angle of Twist directly on screen.
- USB Printer port for Printer interface with graph and result print out.
- Facility to export the result/data in CSV format.



Grip and Clamping Devices :

Self aligned chucks for specimen of various diameter or thickness.



Specifications :

Maximum Torque Capacity	60, 100, 200N-m
Least Count	0.006,0.01, 0.02
Clearance Between Grips	500mm
Cross head Displacement Resolution	0.01mm
Power Supply	230 VAC, 50 Hz, Single Phase
Torsion Speed	Variable from 15 to 100 RPM
Grips for Round / Flat Specimen	4-8, 8-12mm
Width of the Grip	25mm
Gear Motor	440V, 3Ph, 50 Hz.
Size (L x W x H)	1.8 m x 0.5 m x 0.5 m
Weight	200 kg.

CANAN TESTING SERVICES

Accredited by NABL (Dept. of Science & Technology-Govt. of India)

11, 1st Floor, Convenient Shopping Centre, Pocket-F, G.T.B Enclave, Nand Nagari, Delhi - 110093

Tel : +91-11-22580160 | +91-11-22583460 | +91-11-2594094

E-mail : canan@canantesting.com

Web : www.canantesting.com