



SMW LENS TECH PVT.LTD.

- Faridabad, India
- An ISO 9001-2015 Certified Company



Overview

SMW LENS TECH PVT LTD is an ISO 9001-2015 certified company .

SMW LENS TECH PVT LTD provides one stop solution for Plastic Injection Mold design, manufacturing, tryout, mass production, assembly, testing & validation under one roof..

End to End solution provider of cutting edge Plastic Technology.

Leaders in molding of high precision plastic components and Safety Critical items for the lighting & Automobile sector.

Vision



“To be a World Class Organization and a Global Supplier through Superior customer service, Innovation, Quality, Continual Improvement and Commitment”

Milestones



Quality Management System



ISO 9001:2015



Capabilities

SMW LENSTECH PVT LTD IS INVOLVED IN:

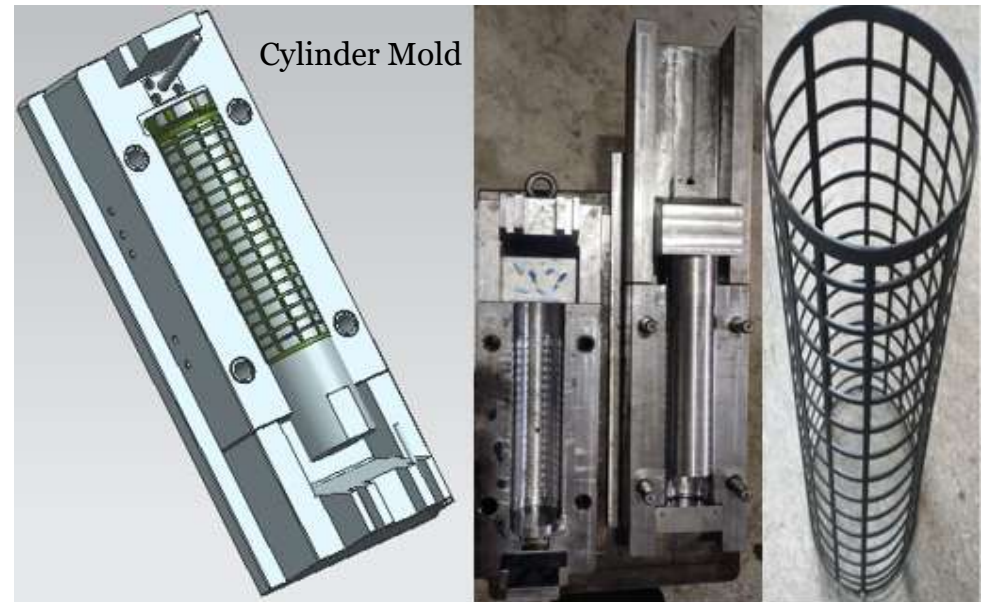
- **MOLD DESIGN & DEVELOPMENT**
- **PRODUCT DESIGN & DEVELOPMENT**
- **PLASTIC INJECTION MOLDING**
- **DIE CASTING**
- **POWDER COATING**
- **ASSEMBLY LINE**



MOLD DESIGN & DEVELOPMENT



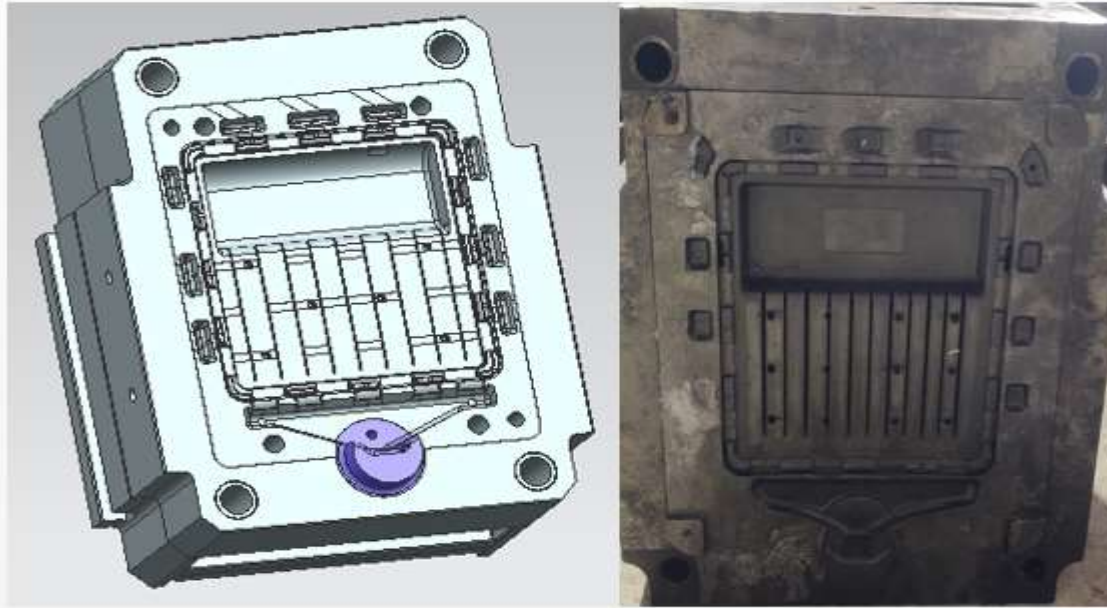
Mold Size :- 800x510x500



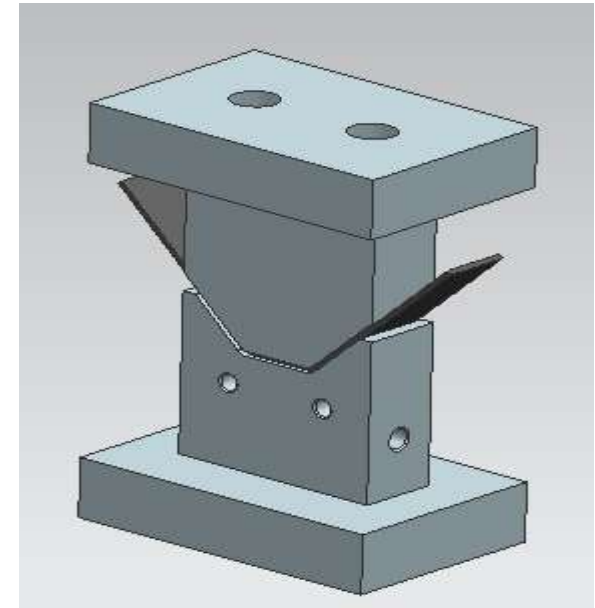
Mold Size :- 1100x310x290

INJECTION MOULDING MOLD

MOLD DESIGN & DEVELOPMENT



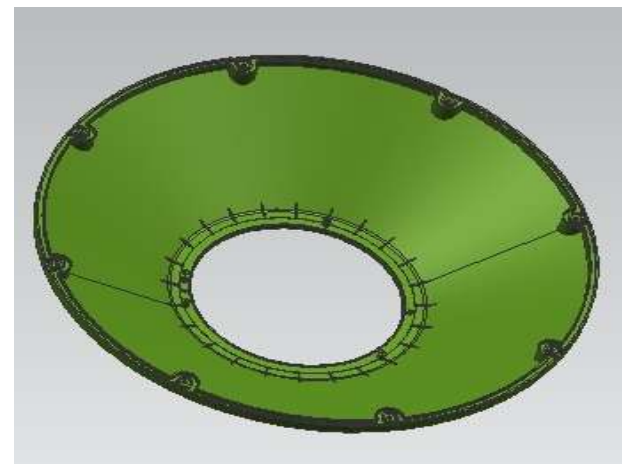
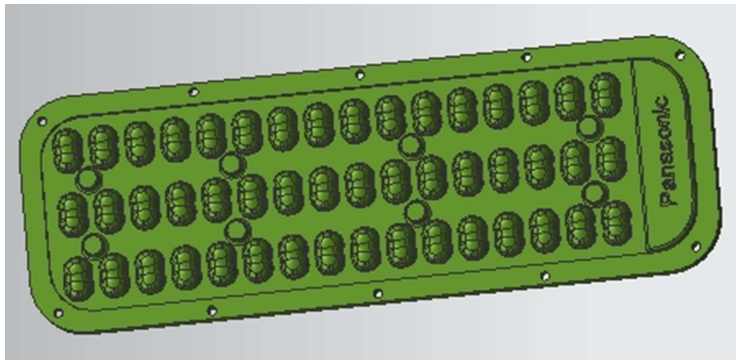
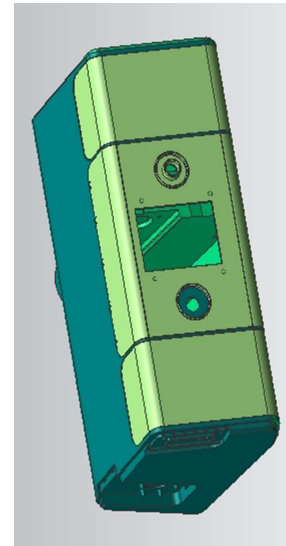
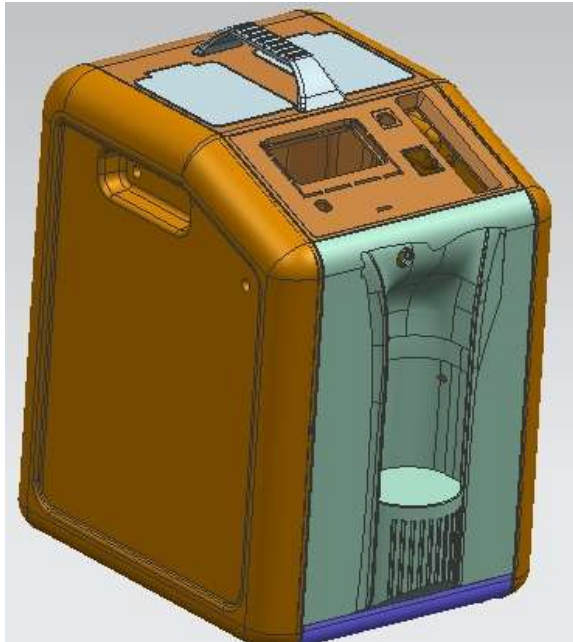
Die Size :- 545x440x325



Mold Size :- 80x80x70

DIE CASTING & SHEET METAL MOLD

PRODUCT DESIGN & DEVELOPMENT



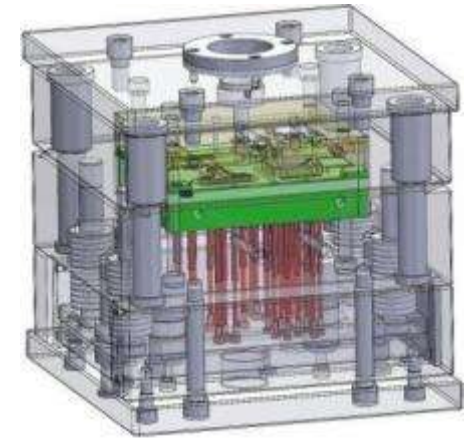
Tool Room

IN – HOUSE TOOL ROOM FACILITIES INCLUDE:

- VMC - 3
- WIRE CUT - 1
- EDM ZNC- 2
- LATHE MACHINE - 2
- MILLING MACHINE - 2
- SURFACE GRINDER – 3
- RADIAL DRILLING MACHINE – 1

DESIGNING SOFTWARE

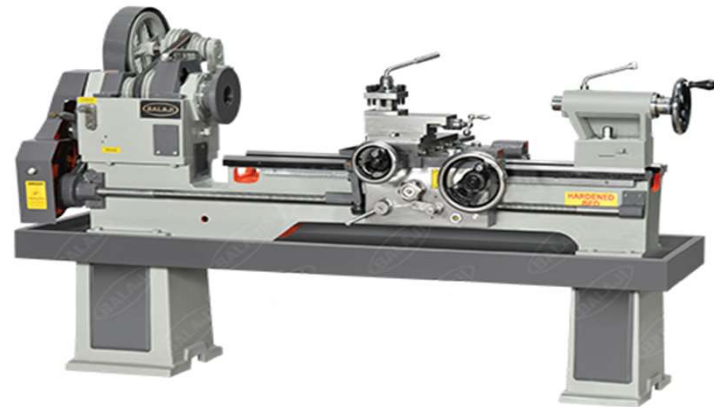
AUTO CAD, SOLIDWORKS & UG-NX



Tool Room Floor



VMC MACHINE



LATHE MACHINE



MNTR MACHINE



SURFACE GRINDER



EDM

Moulding Shop Floor



Injection Moulding

Casting Shop Floor



Die Casting

Coating Floor



Powder Coating Station

Assembly Floor



Light Assy. Line

Machines



Injection Moulding



Die casting

SMW LENS TECH PVT LTD has 18 Nos of Highly Précised injection molding machines (40 – 450 tons) & 03 Nos Die Casting Machine (120 -250 tons).

List of Utilities

S.No.	Utility	Quantity
1.	Air Compressors	3
2.	Annealing Oven	1
3.	Chillers	1
4.	Cooling Tower	1
5.	Dehumidifier 250 liters	2
6.	Drying Oven	1
7.	Hopper Drier	14
8.	HRTC 4 Zones	10
9.	MTC	3
10.	Welding Machine	1

Our Esteemed Major Customers



Products Portfolio



Automobile Filter Parts



Lighting Lens Parts



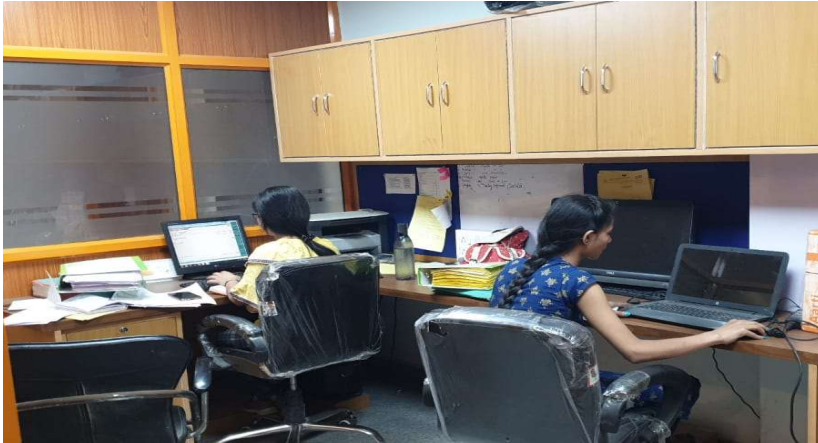
Medical Instrument Parts



Miscellaneous Automobile Parts



OFFICE AREA



ACCOUNTS DEPARTMENT



NPD & QUALITY DEPARTMENT



CONFERENCE ROOM



OFFICE CORRIDOR

Contact Us



SMW LENS TECH PVT LTD.

Plot no ,Gajipur Industrial Area,
Faridabad – 121004,
Haryana, India

M: +91-8470025028

M: +91-9873285028

E-mail:- sales@smwlens.com

Website:- www.smwindia.in





THANKS FOR YOUR ATTENTION....

