

WPC BOARD

Together We Work to Full-Fill Your Needs.



11mm WPC Board, 15mm WPC Board, 17mm WPC Board, 18mm WPC Board, 20mm WPC Board, 22mm Plus Size WPC Door Board, 25mm WPC Board, 28mm WPC Door Board, 4 mm Industrial Stone Polymer Composite Flooring, 4 mm PVC Flooring Plank, 4mm Stone Polymer Composite Flooring, 50 m PVC Edge Banding Tape, 60 x 30mm PVC Door Frames, 6mm WPC Board, 8 x 4 FT Marble UV Sheet, etc.



18MM WPC BOARD



17MM WPC BOARD



20MM WPC BOARD

About Us

Our company, ADs Enterprises, was founded to cater to the growing requirements for quality-assured products, including WPC Board, Wooden Door Frames, PVC Door Frames, Single Pattern Door Frames, Solid PVC Board, and more. These products are widely used in the architecture and interior decoration business. Made from premium-quality raw materials, the quality of our products is unlike that of any other. Each raw material is procured from trusted vendors in the market. These vendors were chosen after a thorough market research, and we tested them based on their policies, the way they conduct their business, and the quality and price of their products.

The products that we deliver to our clients are really appreciated in the market for their durability, accurate design, construction, and low cost. Keeping the prices of these products in competitive ranges has helped us reach a wider audience. We pass each finished piece through a series of quality assurance tests to ensure its quality is on par with international standards. Moreover, our strong logistics and delivery team helps us with the timely delivery of all projects.

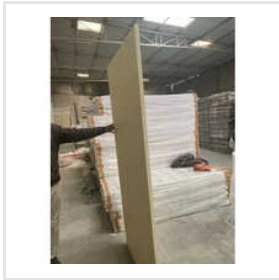
Key Facts

No of Staff	30
Year of Establishment	2014
OEM Service Provided	No

Our Products



11mm WPC Board



22mm Plus Size WPC Door Board



8mm WPC Board



25mm WPC Board



15mm WPC Board



28mm WPC Door Board



WPC Solid Door Frames



Single Pattern Door Frames



PVC Door Frames



White PVC Celuka Board



Rectangular WPC Window Frames



60 X 30mm PVC Door Frames



PVC Foam Board



Wooden Door Frames



PVC Wave Board



6mm WPC Board



ADDRESS

Jind Road, Udyog Marg, Kaithal,
Haryana, India (136027).



EMAIL

abu303in@yahoo.co.in



MOBILE

+919992852222



WEBSITE

www.adsenterprises

KEY PERSONNEL

Abhinav Chaudhry

(DIRECTOR)