



WELCOME



PANCHMAHAL INSULATIONS PRIVATE LIMITED

32, GIDC Indl. Area, Ta: Kalol (Halol), Dist: Panchmahals
Gujarat, India, Pin: 389330
Ph: +91 2676 237285, (M) 9825588338, 9429146946.
Email: pi.kalolaa@gmail.com



Company

PANCHMAHAL INSULATIONS PVT. LTD

(AN ISO 9001:2015 COMPANY)

Plot No. C-32, GIDC Indl. Area,

Ta : Kalol (Halol) ,

Dist : Panchmahal,

Gujarat, 389330.

India.

CMD : Sukhendu Bhattacharjee

+91 9825588338, +91 9998096585



HISTORY OF PANCHMAHAL INSULATIONS PVT. LTD.

- The CMD of this company, Mr. Sukhendu Bhattacharjee, has started his career in 1990 at Nagpur.
- He has worked in a professional company for 14 years. Initial 5 years in production, then 2 years in quality control & last 7 years in marketing.
- After that he left his job & started his own manufacturing unit with 5 workers and a supervisor in a rented shed in the year 2004.
- Initially one product was been manufactured & then gradually it increased by 20 products as on date.

ABOUT PANCHMAHAL INSULATIONS PVT. LTD.

- ▶ Panchmahal Insulations Pvt. Ltd. is a name valued for trust and performance in Indian Steel Plants & Foundry Industry.
- ▶ Panchmahal Insulations Pvt. Ltd. caters to the needs of Steel Plants and Foundries throughout India, particularly in the Western regions and Southern regions as well as abroad. Our client base include reputed names both from India and abroad.
- ▶ Owing to our quality consciousness, client centric approach and ethical business values, we have been able to acquire huge client base in countries of Indian Subcontinent, Arabian and African Countries.
- ▶ We have been the major suppliers of big clients of Steel and Foundry industry in India and abroad with variety of products like that of Ladle Covering Powder, Nozzle Filling Compounds, Mortars, Castables, Sleeves, EBT Filling Mass, Refractory Paints, Casting Powder and many more to add to our product list used for manufacturing Mild Steel, Alloy Steel, Stainless Steel, Quality Casting etc.



Certificate

This is to Certify that

Panchmahal Insulations Pvt. Ltd.

**32, GIDC Indl. Area, Ta. Kalol (Halol),
Dist. Panchmahals, Gujart - 389330, India**

Compliance with
Quality Management System

ISO 9001:2015

for the following scope:

**Tundish Board, Ladle & Tundish Covering Powder, Casting
Powder, Castables, Mortars, Nozzelex, Rice Husk, H.A. Bricks,
Ceramic Blanket, Insulating Board, CCM Consumables &
Other Customized Items for Steel & Foundry Industries**

Certificate No. : QMS/05690/0118
Original Certificate Date : 04-January-2018
Issue Date : 04-January-2018
Expiry Date : 03-January-2021

To check this certificate status visit:
"<http://uasl.uk.com/certifiedorganization.html>"



Authorised Signature

For Quality Control Certification

Head Office: 2nd Floor, Aman Market,
Narela Mandi, Delhi - 110 040, India

UK Office: 1929, Chynoweth House,
Trevisson Park, Truro - TR4 8UN,
Cornwall, UK



Quality Control Certification accredited by UASL, UK
This certificate doesn't provide the certified organisation with immunity from its legal obligations.
This certificate remains the property of QC Certification to whom it must be returned on request.





WHY US ?????

- ❖ We are a prominent manufacturer, supplier and exporter of a comprehensive assortment of various fluxes and chemical used in Iron and Steel making process. The products offered by us are formulated using premium ingredients and in compliance with the international quality standards. There are various factors that contribute to our tremendous success in the industry are mentioned below:
 - Qualitative range
 - Customization
 - Easy mode of payment
 - Competitive prices
 - Timely delivery
 - Wide distribution network
 - Client satisfaction and strong rapport with clients





Directors of Our Company

1. Mr. Sukhendu Bhattacharjee (Managing Director). IIM (METALS)
2. Mr. Ranjan Mallik. Exe. Director (Technical), IIM (METALS)
3. Mr. Yashraj . Exe. Director (Marketing), MBA (Australia)
4. MS. Sagarika Bhattacharjee ,(Exe. Director) B.TECH (METALLURGY)



OUR TEAM

➤ PRODUCTION cum TECHNICAL DEPT.

- ✓ Mr. Pravin Parmar (Production **Slurry** products)
- ✓ Mr. Devyaraj Parmar (Production Ceramic div.)
- ✓ Mr. Ankush Pandey (Production Supervisor)

➤ COMMERCIAL DEPT.

- ✓ Mrs. Komal Patel (Commercial Head)
- ✓ Ms. Nima Patel (Accountant)

➤ QUALITY and R & D DEPT.

- ✓ Ms. Sagarika Bhattacharjee

➤ MARKETING DEPT.

- ✓ Mr. Harsh Patel (Area Sales Manager)

➤ ADMINISTRATION (HRD)

- ✓ Shri. Amalendu Bhattacharjee

➤ TECHNICAL ADVISOR

- ✓ Mr. Navneet Singh

➤ CA: Rajesh Nagda and associates

Vadodara

Technologies


With a view to revolutionize Steel Industry & Foundry Industry we are continuously guided by latest research and upfront Technology.

For over 15 years Panchmahal Insulations Pvt. Ltd has pioneered new processes in manufacturing of Continuous Casting Products, Feeding Aids, Hot Topping System, Refractory Dressings for both Ferrous and Non-Ferrous Foundries and various other products for Iron and Steel.

Our products are supported by innovative service enhancements, improved processing capability, optimal resource utilization and overall efficiency.

Panchmahal Insulations Pvt. Ltd. has its own R&D wing to discover and develop better products and solutions to enhance Steel Plants & Foundry performance worldwide. Moreover we are also linked with Academic Institution and Consultants who guide us with the new technology and assist us in innovation of new products for Steel and Foundry Industry

Fact Sheet



Year of Establishment	: 2004
Nature of Business	: Manufacturer, Supplier, Exporter.
Total Number of Employees	: 70 People
Competitive Advantage	: Experienced R & D Department
Working Area	: 4000 square meter in 2 different works
Capacity	: We are chasing our customer's requirement. We have capacity of 6000 Tons (Yearly) of different powder products.
Running Shift	: Normally two shift.
Export share	: About 50% of our total production.

Our Products :

- Tundish Board
- Sealing & Packing Compound
- Ladle Covering Powder
- Tundish Covering Powder
- Nozzle Filling Compound
- Castable
- Mortar
- Back Filling Mass
- Silica Ramming Mass
- De sulphurisor
- Casting Powder
- High Alumina Bricks
- Foundry Sleeves and APC powder
- Foundry Coatings
-

Ceramic Fibre Board

Ceramic Wool

Ceramic Blanket

Ceramic Insulation Powder

Ceramic Paper

Super Insulating Shapes

Granule Rice Husk

Unburnt Rice Husk

Burnt Rice Husk



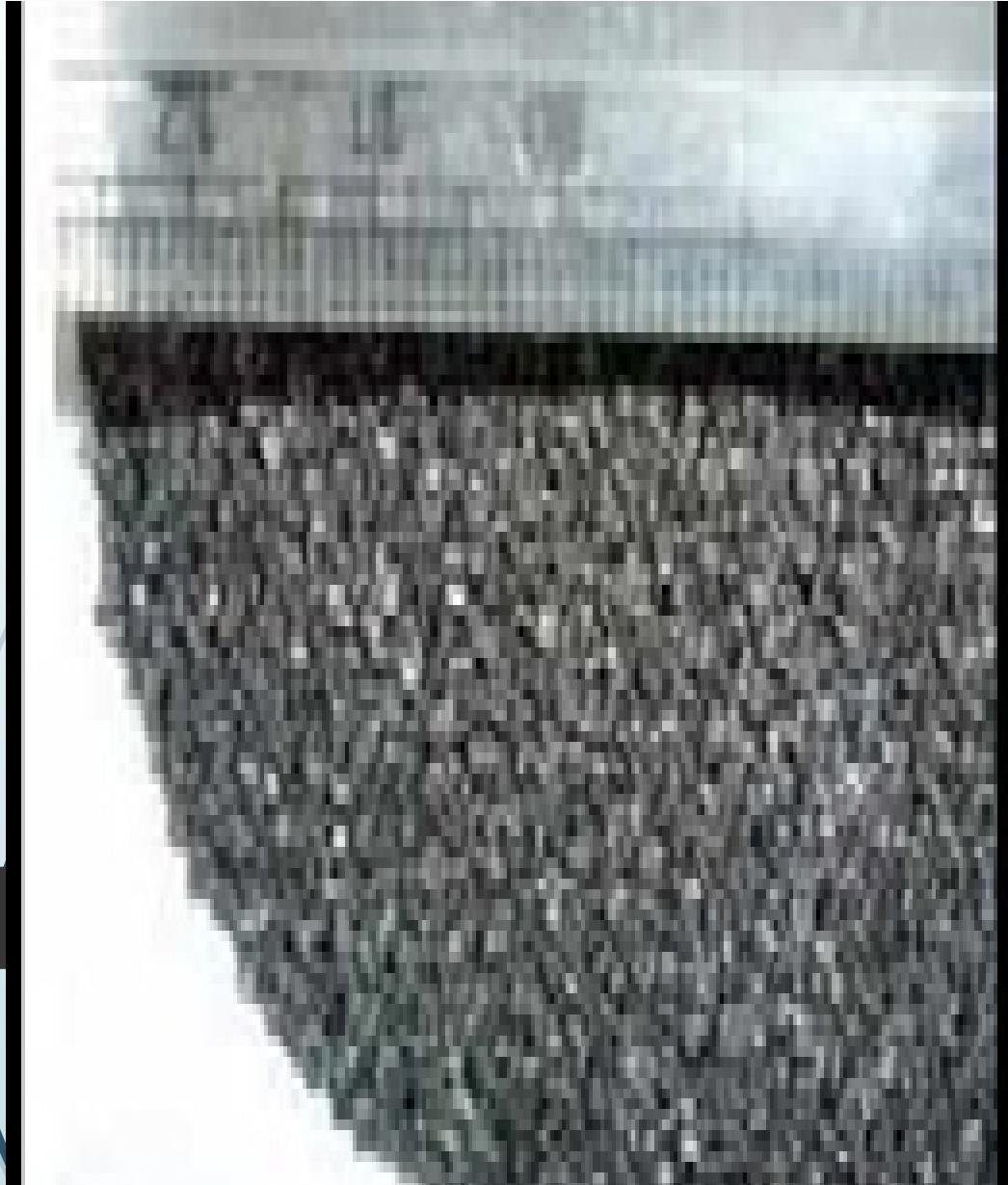
TUNDISH BOARDS:

Insulating disposable boards used as a inner lining for continuous casting tundishes This avoids the lengthy preheating process thereby helps in significant energy saving & refractory saving



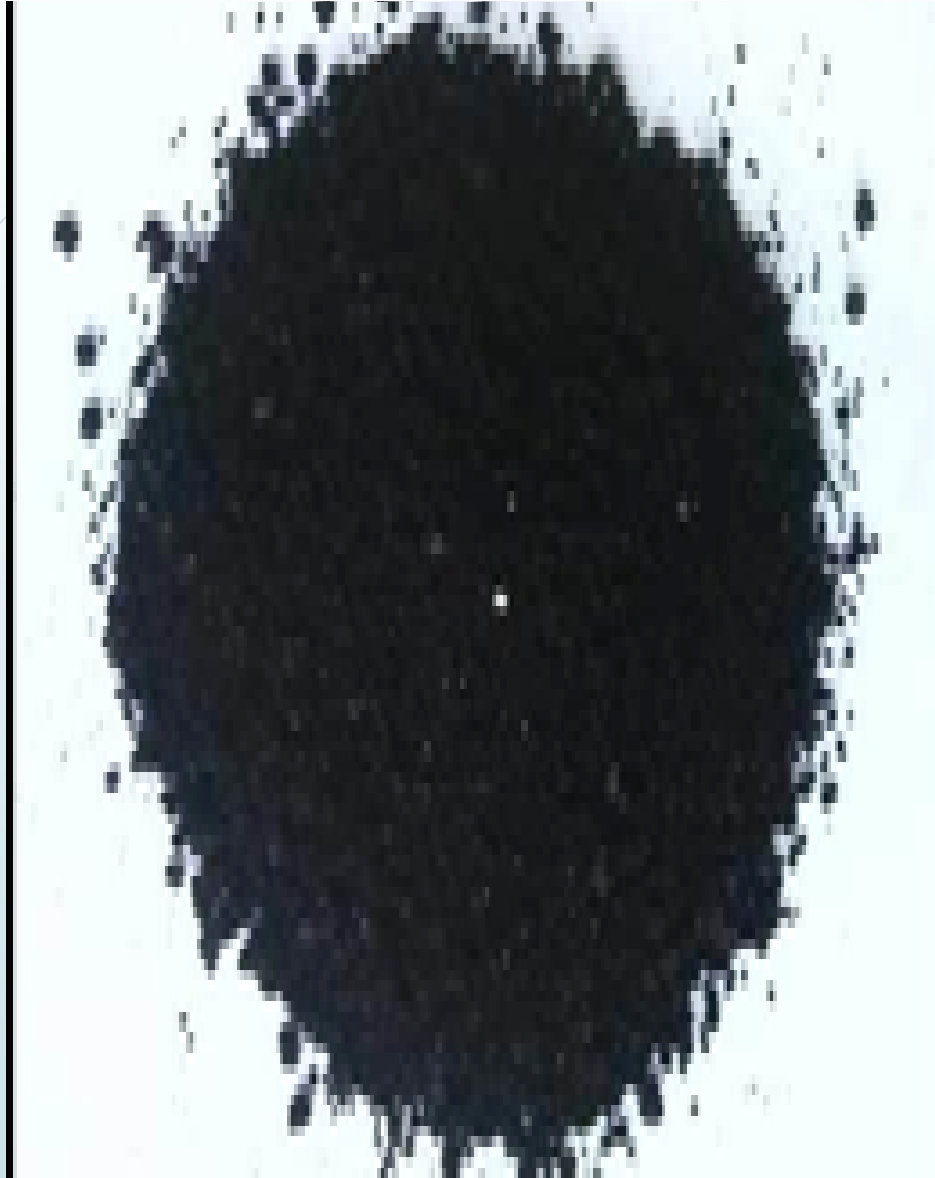
LADLE BOARDS:

Insulating disposable boards used as a inner lining for continuous casting tundishes This avoids the lengthy preheating process thereby helps in significant energy saving & refractory saving



NOZZLE FILLING COMPOUND:

Ladle nozzle filling compound is a free-flowing refractory particular material used in the ladle or tundish slide gate to prevent sculling and steel freeze-off and ensure easy opening at the start of casting.



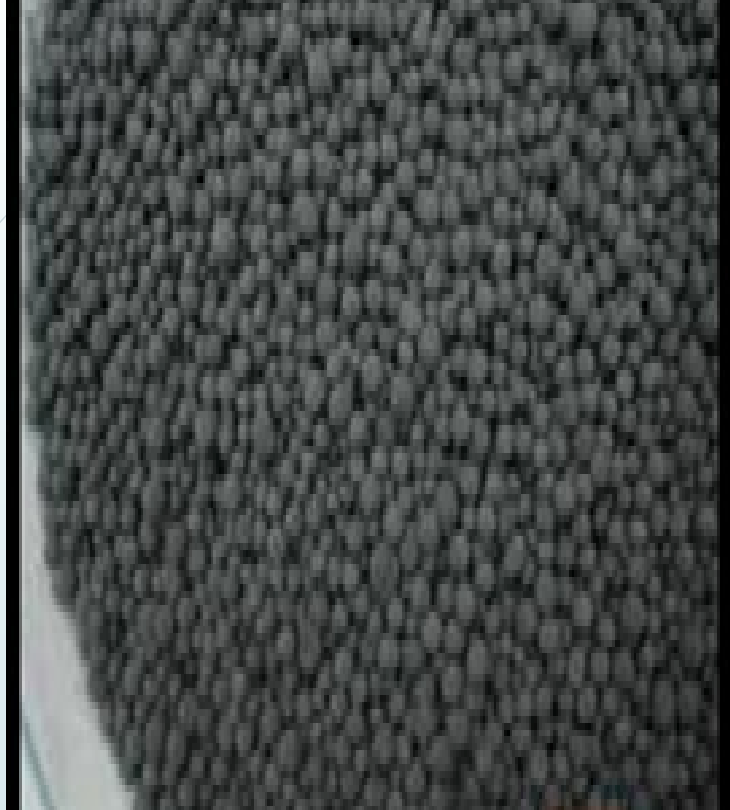
EBT FILLING MASS:

EBT Filling mass compound is high refractory granular material, which is used in electric arc furnace with eccentric bottom tapping for free and easier opening of tap hole.



CASTING POWDER:

We are one of the renowned Casting Powder manufacturer and Suppliers to the mini and Integrated steel plants. This product is used in continuous casting machine.



RICE HUSK & GRANULE RICE HUSK:

Rice Husk Ash Granules,
made of supreme quality
rice husk, these products are
known for their insulating
properties.



LADLE & TUNDISH COVERING COMPOUND:

Ladle Covering Powder is a range of insulating covering powder designed for use in the ladle to prevent heat loss.



Click icon to add picture



approximately 50% to 70%, which
is designed to be used at very
high temperatures, as per users
requirement.



FOUNDRY SLEEVES & COATINGS:

Insulating, Exothermic, High density sleeves and various types of Coatings suitable for all application in foundries.



MORTARS:

An air setting/ceramic bonded mortar with alumina content of approximately 40% - 70%, which is designed to be used at high temperatures joints and other areas.



Back Filling Mass:

This is a magnetised based filling mass. These products are used in AOD and Ladle where the SS Production done

OUR MAJOR CUSTOMERS

- Essar Steel Ltd. (Hazira), Surat.
- JSW Ltd. (Bellary), Karnataka
- Aarti Sponge and Power Ltd. (Raipur)
- Rajputana Stainless Ltd. (Halol). India
- Shareeyam power and steel Ltd. (Gandhidham).
- Gallantt Metal Ltd. (Samakhiyali).
- Gujarat NRE Coke Ltd. (Gandhidham)
- Mandovi Metal Ltd. (Goa) India
- Agarwal Mittal Concast Pvt. Ltd. (Halol)
- Welspun Steel Ltd. (Anjar)
- Panchmahal Steel Ltd. (Kalol).



OUR OVERSEAS CUSTOMERS

- Modern Steel Mills LLC. (Sultanate of Oman)
- Indo Africa Steel LDA. (Mozambique)
- Sohar Steel LLC. (Sultanate of Oman)
- AL-MUDAHESH Steel Factory.(Saudi Arabia)
- Sagamu Steel Nigeria Ltd.(Lagos, Nigeria)
- Geo steel LLC Georgia, Russia.
- Qatar Steel. Qatar.
- Emadgostar Negar Partak Ekbtan, Iran
and many more...



Our Associated Companies :

Company Name

Products

- | | |
|--|---------------------------------|
| ➤ Global Ceramics , Wankener, Gujarat. | High Alumina Bricks |
| ➤ MPR Refractories , Hyderabad, Andhra | Flow Gate Refractories |
| ➤ Kumar World Trade, Dubai. | CCM Consumables |
| ➤ Steel Melt Industries, Mumbai, Maharashtra | CCM and mechanical parts. |
| ➤ Panchmahal Creative, Kalol, Gujarat. | Powder and Insulation products. |
| ➤ Thermoflyde Industries pvt. Ltd | Monolithic and Refractories. |



Come, Lets work Together!

Thank
you

