



BHADRA ENCLOSURE SYSTEMS

Taj Mahal , Bhardanwala Lane, Opposite Jwalamukhi Mata Mandir, Near Homeguard, NSS
Road, Ghatkopar (W) 400086 Email:bhadraenclosure@gmail.com
Website: www.bhadraenclosures.com Tel: +91 9619055699

IP 65/66 ABS & Polycarbonate Enclosures

We offer premium quality ABS Enclosures (Junction Boxes) that is manufactured from quality raw materials to ensure its durability and utility. These are quality tested on well defined parameters before being delivered to our clients. We also meet customized requirement and offer our range at industry leading prices.VSM has created a wide range of sizes to suite all needs.

Applications:

Our enclosures are suited for all areas requiring weatherproof enclosures-Indoors & Outdoors

Some area where these enclosures are ideally used are:

Petrochemical Complex, CNC Machines, Instrumentation, Push Button Stations, Relay Modules, Control Panels, Electrical and

Electronic Systems, Automation, and Distribution Boxes.

Technical Specifications:

Protection Spec: IP65 acc DIN EN 60529/ DIN 40050

Material: ABS / Polycarbonate (UV Resistance) Rubber Seal: Foamed Neoprene Seal

Colour: Light Grey (RAL 7035) (Special colours on request)

Installation Temperature: 5°C to +80°C (ABS) and +100°C (Polycarbonate) Temperature Resistance Max. 100°C 60605 10 2

Sr.No.	Item Code	Dimensions
1	BE-553	50 x 52 x 35 mm
2	BE-563	50 x 65 x 35 mm
3	BE-805635	80 x 56 x 35mm
4	BE-805655	80 x 56 x 55 mm
5	BE-808240	80 x 82 x 40 mm
6	BE-808245	80 x 82 x 45 mm
7	BE-808250	80 x 82 x 50 mm
8	BE-885	80 x 82 x 55 mm
9	BE-808280	80 x 82 x 80 mm
10	BE-888	80 x 82 x 85 mm
11	BE-501035	50 x 100 x 35 mm
12	BE-501060	50 x 100 x 60 mm
13	BE-801235	80 x 120 x 35 mm
14	BE-815	80 x 120 x 55 mm
15	BE-818	80 x 120 x 85 mm
16	BE-901365	90 x 130 x 65 mm
17	BE-80165	80 x 160 x 55 mm
18	BE-801670	80 x 160 x 70 mm
19	BE-801685	80 x 160 x 85 mm
20	BE-801610	80 x 160 x 100 mm
21	BE-801855	80 x 180 x 55 mm
22	BE-801870	80 x 180 x 70 mm
23	BE-801885	80 x 180 x 85 mm
24	BE-801810	80 x 180 x 100 mm
25	BE-80215	80 x 210 x 55 mm
26	BE-802360	80 x 230 x 60 mm
27	BE-802375	80 x 230 x 75 mm
28	BE-802385	80 x 230 x 85 mm
29	BE-802310	80 x 230 x 100 mm
30	BE-101040	100 x 100 x 40 mm
31	BE-101060	100 x 100 x 60 mm
32	BE-101080	100 x 100 x 80 mm
33	BE-101010	100 x 100 x 100 mm
34	BE-121255	122 x 125 x 55 mm
35	BE-117	122 x 125 x 75 mm
36	BE-101550	100 x 150 x 50 mm





BHADRA ENCLOSURE SYSTEMS

Taj Mahal , Bhardanwala Lane, Opposite Jwalamukhi Mata Mandir, Near Homeguard,
 NSS Road, Ghatkopar (W) 400086 E-mail: bhadraenclosure@gmail.com
 Website: www.bhadraenclosures.com Tel: +91 9619055699

IP 65/66 ABS & Polycarbonate Enclosures

We offer premium quality ABS Enclosures (Junction Boxes) that is manufactured from quality raw materials to ensure its durability and utility. These are quality tested on well defined parameters before being delivered to our clients. We also meet customized requirement and offer our range at industry leading prices. VSM has created a wide range of sizes to suite all needs.

Applications:

Our enclosures are suited for all areas requiring weatherproof enclosures-Indoors & Outdoors

Some area where these enclosures are ideally used are:

Petrochemical Complex, CNC Machines, Instrumentation, Push Button Stations, Relay Modules, Control Panels, Electrical and Electronic Systems., Automation... the list is endless.

Technical Specifications:

Protection Spec: IP65 acc DIN EN 60529/ DIN 40050

Material: ABS / Polycarbonate (UV Resistance) Rubber Seal: Foamed Neoprene Seal

Colour: Light Grey (RAL 7035) (Special colours on request)

Installation Temperature: -5° C to +80° C (ABS) and +100° C (Polycarbonate) Temperature Resistance Max. 100° C 60695 10-2

Sr.No.	Item Code	Dimensions
37	BE-101570	100x15x70 mm
38	BE-121455	120x140x55 mm
39	BE-121470	120 x 140 x 70mm
40	BE-121410	120 x 140 x 100 mm
41	BE-122055	120x200x55 mm
42	BE-127	120 x 200 x 75 mm
43	BE-129	120 x 200 x 90 mm
44	BE-121750	125 x 170 x 50 mm
45	BE-121765	125 x 170 x 65 mm
46	BE-121785	125 x 170 x 85 mm
47	BE-121710	125 x 175 x 100 mm
48	BE-151575	150 x 150 x 75 mm
49	BE-151510	150 x 150 x 100 mm
50	BE-181860	180 x 180 x 60 mm
51	BE-181875	180 x 180 x 75 mm
52	BE-181810	180 x 180 x 100 mm
53	BE-181811	180 x 180 x 115 mm
54	BE-212160	210 x 210 x 60 mm
55	BE-212175	210 x 210 x 75 mm
56	BE-212190	210 x 210 x 90 mm
57	BE-212110	210 x 210 x 100 mm
58	BE-142260	140 x 225 x 60 mm
59	BE-142275	140 x 225 x 75 mm
60	BE-142290	140 x 225 x 90 mm
61	BE-142210	140 x 225 x 105 mm
62	BE-162560	160x250x60 mm
63	BE-1259	160 x 250 x 90 mm
64	BE-12515	160 x 250 x 115 mm
65	BE-192813	190 x 280 x 130 mm
66	BE-253085	250 x 300 x 85 mm
67	BE-253011	250 x 300 x 110 mm
68	BE-253015	250 x 300 x 150 mm
69	BE-253017	250 x 300 x 170 mm
70	BE-282813	280 x 280 x 130 mm
71	BE-304014	300 x 400 x 140 mm
72	BE-304018	300 x 400 x 180 mm
73	BE-304021	300x 400 x 210 mm
74	BE-404021	400x400x210 mm
75	BE-193813	190x380x130 mm
76	BE-382813	380x280x130 mm
77	BE-453821	450 x 380 x 215 mm
78	BE-563818	560x380x180 mm
79	BE-606025	600 x 600 x 225mm
80	BE-655525 FRP	650x550x250 mm
81	BE-857030 FRP	850x700x300 mm





BHADRA ENCLOSURE SYSTEMS

Taj Mahal , Bhardanwala Lane, Opposite Jwalamukhi Mata Mandir, Near Homeguard, NSS Road, Ghatkopar (W) 400086
 E-mail: bhadraenclosure@gmail.com
 Website: www.bhadraenclosures.com Tel: +91 9619055699

Cable Glands (Light Grey, Dark Grey, Black)

Cable Glands are available in PG & Matrix variations. Confirming to IP65 standards, Our Cable Glands will secure your wiring and reduce risks of cable breaks and wear outs.

We supply wide range of sizes to suit all your applications.

Technical Specifications:

Material: Nylon 6

Colour: Light Grey (RAL 7035), Dark Grey & Black

Working Temperature: -40° C to 100° C in static state; -20° C to 80° C in dynamic state.

Sr.No.	Model	Cable Dia	Hole Dia
1	PG-7	3 - 6.5 mm	12.5 mm
2	PG-9	4 - 8 mm	15.2 mm
3	PG-11	5 - 10 mm	18.6 mm
4	PG-13.5	6 - 12 mm	20.4 mm
5	PG-16	10 - 14 mm	22.5 mm
6	PG-19	12 - 15 mm	24 mm
7	PG-21	13 - 18 mm	28.3 mm
8	PG-25	16 - 21 mm	30 mm
9	PG-29	18 - 25 mm	37 mm
10	PG-36	22 - 32 mm	47 mm
11	PG-42	28 - 38 mm	54 mm
12	PG-48	35 - 45 mm	59.3 mm
13	PG-63	42 - 50 mm	72 mm
14	M-12	3 - 6 mm	12 mm
15	M-16	5 - 10 mm	16 mm
16	M-20	8 - 13 mm	20 mm
17	M-25	11 - 17 mm	25 mm
18	M-32	15 - 21 mm	32 mm
19	M-40	19 - 28 mm	40 mm
20	M-50	25 - 35 mm	50 mm
21	M-63	35 - 45 mm	63 mm



Brass PG Cable Gland(IP68)

Technical Specification:

Ingress protection: IP68

Thread: PG

Material: Nickel Plated Brass

Seals: Neoprene/ Nitrile

Operating Temp: -20°C to +100°C

Insert: Polyamide Nylon 6

Sr.no	Size	Threading Length	Clamping Range
1	PG- 07B	7	3-6
2	PG- 09B	8	4-8
3	PG-11B	8	5-10
4	PG- 13.5B	10	6-12
5	PG- 16B	10	10-14
6	PG- 21B	10	13-18
7	PG- 29B	10	18-25
8	PG- 36B	10	24-13.5
9	PG- 42B	12	30.37.5
10	PG- 48B	12	34-43





BHADRA ENCLOSURE SYSTEMS

Taj Mahal , Bhardanwala Lane, Opposite Jwalamukhi Mata Mandir, Near Homeguard, NSS
 Road, Ghatkopar (W) 400086 E-mail: bhadraenclosure@gmail.com
 Website: www.bhadraenclosures.com Tel: +91 9619055699

TECHNICAL DATA SHEET : **BLANKING PLUGS**

Product Material: PA-6 V2
 Sealing Ring: Neoprene Rubber & PVC
 Thread : PG & Metrix
 IP: 68 - 5 Bar
 Temperature Range: L94 V2

BLANKING PLUGS

Sr.No	Item Code	Description
Metrix Blanking Plugs		
1	M-12	Nylon Blanking Plugs
2	M-16	Nylon Blanking Plugs
3	M-20	Nylon Blanking Plugs
4	M-25	Nylon Blanking Plugs
5	M-32	Nylon Blanking Plugs
6	M-40	Nylon Blanking Plugs
7	M50	Nylon Blanking Plugs
8	M-63	Nylon Blanking Plugs



PG Blanking Plugs

Sr.No.	Item Code	Description
1	PG-7	Nylon Blanking Plugs
2	PG-9	Nylon Blanking Plugs
3	PG-11	Nylon Blanking Plugs
4	PG-13.5	Nylon Blanking Plugs
5	PG-16	Nylon Blanking Plugs
6	PG-21	Nylon Blanking Plugs
7	PG-29	Nylon Blanking Plugs



IP 68 Connectors

Technical Specifications:

Raw Materials: Insert: Nickel- Plated brass
 Body: Polymide 6 Screws: Zinc-Plated Steel. Metric Thread

Sr.No	Product
1	IP 68 T-Type Connector 5 Way
2	IP 68 Straight Connector 5 Way
3	IP 68 Connector 3-Way





BHADRA ENCLOSURE SYSTEMS

Taj Mahal , Bhardanwala Lane, Opposite Jwalamukhi Mata Mandir, Near Homeguard, NSS Road, Ghatkopar (W) 400086 E-mail: bhadraenclosure@gmail.com

IP66/67/68 Aluminium Enclosures

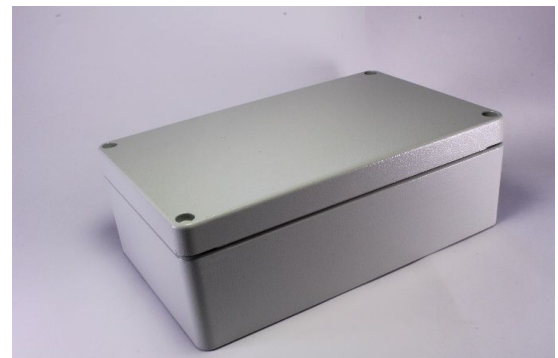
We are a renowned name engaged in providing a wide range of Aluminium Enclosures (Junction Box) that is manufactured from quality tested raw material. Known for its excellent quality, durability, dimension accuracy. These are widely used in Electric & Electronics Industries.

Technical Specification:

Protection Specification: IP66 acc DIN EN 6052/DIN 40050 Material: Aluminium (Al Si 12)
Neoprene Seal/ Silicon gasket
Dark Grey (RAL 7001)

Rubber Seal: Foamed
Colour: Light Grey (RAL 7035),

Sr.no	Item Code	Dimensions
1	BE-45503 AL	45 x 50 x 30 mm
2	BE-58643 AL	58 x 64 x 34 mm
3	BE-64983 AL	64 x 98 x 34 mm
4	BE-75805 AL	75 x 80 x 57 mm
5	BE-64153 AL	64 x 150 x 34 mm
6	BE-80125 AL	80 x 125 x 57 mm
7	BE-118 AL	100 x 160 x 80 mm
8	BE-10108 AL	100 x 100 x 81 mm
9	BE-80175 AL	80 x 175 x 57 mm
10	BE-80255 AL	80 x 250 x 54 mm
11	BE-12128 AL	120 x 122 x 81 mm
12	BE-12129 AL	120 x 122 x 91 mm
13	BE-12228 AL	120 x 220 x 81 mm
14	BE-1229 AL	120 x 220 x 91 mm
15	BE-119 AL	160 x 160 x 90 mm
16	BE-1269 AL	160 x 260 x 90 mm
17	BE-221 AL	200 x 230 x 110 mm
18	BE-139 AL	160 x 360 x 90 mm
19	BE-232811 AL	230 x 280 x 110 mm
20	BE-23308 AL	230 x 330 x 180 mm
21	BE-233011 AL	230 x 330 x 110 mm
22	BE-181810 AL	180 x 180 x 100 mm
23	BE-258054 AL	250 x 80 x 54 mm
24	BE-201490 AL	200 x 140 x 90 mm
25	BE-281810 AL	280 x 180 100 mm
26	BE-232018 AL	230 x 200 x 180 mm
27	BE-403111 AL	400 x 310 x 110 mm
28	BE-403118 AL	400 x 310 x 180 mm
29	BE-603111 AL	600 x 310 x 110 mm
30	BE-603118 AL	600 x 310 x 180 mm
31	BE-402311 AL	400 x 230 x 110 mm
32	BE-141490 AL	140 x 140 x 90 mm
33	Aluminium 1 Way Push Button Enclosure	
34	Aluminium 2 Way Push Button Enclosure	





BHADRA ENCLOSURE SYSTEMS

Taj Mahal , Bhardanwala Lane, Opposite Jwalamukhi Mata Mandir, Near Homeguard, NSS Road,
 Ghatkopar (W) 400086 E-mail: bhadraenclosure@gmail.com
 Website: www.bhadraenclosures.com Tel: +91 9619055699

TECHNICAL DATA SHEET : GLASS REINFORCED POLYESTER (GRP) ENCLOSURES

COLOR	RAL 7000, GREY	RAL 9011, BLACK
INGRESS PROTECTION	IP 66 TO EN 60529* 60079-0	IP 66 TO EN 60529*
IMPACT RESISTANCE	>7 JOULES, IN ACC. WITH EN 60079-0	>7 JOULES, in acc. With EN 60079 - 0
TEMPERATURE RANGE	(NEOPRENE SEAL) : - 40°C TO + 80°C	(NEOPRENE SEAL) : - 40°C TO + 80°C
	(SILICONE SEAL) : -50°C TO + 100°C	(SILICONE SEAL) : -50°C TO + 100°C
SURFACE RESISTANCE	>10 ¹² OHM	<10 ² OHM
FLAMMABILITY	VO / SELF-EXTINGUISHING, UL94	VO / SELF-EXTINGUISHING, 94
DIELECTRIC STRENGTH	18 kV / mm	-
TOXICITY	FREE FROM HALOGEN	FREE FROM HALOGEN

POLYESTER ENCLOSURES

SR No	MODEL	DIMENSIONS
1	BE - 807555 PS	80 x 75 x 55 mm
2	BE - 117555 PS	110 x 75 x 55 mm
3	BE - 121290 PS	122 x 120 x 90 mm
4	BE - 167555 PS	160 x 75 x 55 mm
5	BE - 167575 PS	160 x 75 x 75 mm
6	BE - 161690 PS	160 x 160 x 90 mm
7	BE - 197555 PS	190 x 75 x 55 mm
8	BE - 221290 PS	220 x 120 x 90 mm
9	BE - 252512 PS	255 x 250 x 120 mm
10	BE - 261690 PS	260 x 160 x 90 mm
11	BE - 361690 PS	360 x 160 x 90 mm
12	BE - 402512 PS	400 x 250 x 120 mm
13	BE - 404012 PS	400 x 405 x 120 mm





BHADRA ENCLOSURE SYSTEMS

Taj Mahal , Bhardanwala Lane, Opposite Jwalamukhi Mata Mandir, Near Homeguard, NSS
 Road, Ghatkopar (W) 400086 E-mail: bhadraenclosure@gmail.com
 Website: www.bhadraenclosures.com Tel: +91 9619055699

TECHNICAL DATA SHEET : POLYAMIDE SPIRAL CONDUITS - P 6

Material :	Polymide PA-6 v2
Colour :	Black(RAL9005), Grey(RAL7031)
Flammability class :	UL94 V2
Temperature range :	-40.C + 12.C, short term 150.C
Tensile Strenght :	750 N
Suspended Load Capacity :	150 N



Sr.No.	Product Code	TL(mm)
1	PG-7C	6.4
2	PG-9C	11.5
3	PG-11C	12
4	PG-13.5	12
5	PG-16	13
6	PG-21	13
7	PG-29	15
8	PG-36	15
9	PG48	16



CONDUIT PIPES

Sr.no	Product Code	In Dia x Out Dia (mm)
1	PG-7P	6.5 x 10.0
2	PG-9P	10.0 x 13.0
3	PG-11P	12.0 x 15.8
4	PG-13.5P	14.3 x 18.5
5	PG-16P	17.0 x 21.2
6	PG-21P	23.0 x 28.5
7	PG-29P	29.0 x 34.5
8	PG-36P	36.0 x 42.5
9	PG-48P	48.0 x 54.5



CONDUIT MOUNTING BRACKETS

Sr.no	Product Code	Standard Packing
1	BPPCB7	100
2	BPPCB9	100
3	BPPCB11	100
4	BPPCP13.5	100
5	BPPCB16	100
6	BPPCB21	50
7	BPPCB29	50
8	BPPCB36	25
9	BPPCB48	10





BHADRA ENCLOSURE SYSTEMS

Taj Mahal , Bhardanwala Lane, Opposite Jwalamukhi Mata Mandir,
Near Homeguard, NSS Road, Ghatkopar (W) 400086 E-mail:
bhadraenclosure@gmail.com
Website: www.bhadraenclosures.com Tel: +91 9619055699

Releasable Wire Connectors, Lever Type

Technical Specification:


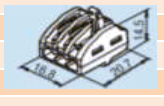
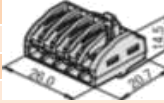
Polycarbonate and Polyamide B6, UL 94V-0 flame-retardant shell rated at ABS (IEC), 105°C/221°F (UL).

Spring force connector constructed from tinned copper plate and stainless spring steel.

Accept solid and stranded conductors from 0.2 mm² 28 AWG up to 4.0 mm² 12 AWG.

Operate the clamping unit via the integral lever and insert conductors without using any tools.

Rated to 600V max. for outdoor wiring and 1kV max. in mounting fixture applications.

Column1	Column2	Column4	Column5	Column6
Sr.No	Picture	Size	Colour	Poles
1		PC622	Clear+ Orange	2
2		PC623	Clear + Orange	3
3		PC625	Clear +Orange	5



Terminal Blocks, PA & Steel Type

Technical Specification:

Polymide 66, UL94V-2 flame-retardant shell rated at T110()

Column1	Column2	Column3	Column4	Column5	Column6	Column7	Column8	Column9	Column10
Sr.No	Code	Dimension							Screws
		unit in/mm	A	B	C	D	E	F	
1	PA20P	mm	96.2	17.00	14.50	8.20	3.10	2.90	M2 6x5
		in	3.787	0.67	0.57	0.32	0.12	0.11	
2	PA30P	mm	116.8	19.20	16.70	10.00	3.40	3.60	M 3x6
		in	4.598	0.76	0.67	0.36	0.13	0.14	
3	PA40P	mm	140.5	23.50	18.70	12.00	4.50	3.90	M3 5x7
		in	5.531	0.925	0.74	0.47	0.18	0.15	
4	PA50P	mm	169.8	25.00	20.80	14.50	6.50	4.30	M 4x9
		in	6.685	0.98	0.82	0.57	0.26	0.17	
5	PA60P	mm	194.4	36.00	26.10	16.50	7.00	4.20	M 5x11
		in	7.65	1.42	1.03	0.65	0.28	0.17	

