



ENGINEERING » EXCELLENCE



**Pole Line Hardware
& Accessories**



**Insulator &
Conductor Accessories**



**Telecommunication
& ABC Accessories**

35 YEARS

*of experience and
technical expertise*

Adco Overseas



The foundation of ADCO Overseas was laid by Mr Ajay Chopra in Kolkata, India. An ISO 9001:2015 certified company having a wide array of products such as pole line hardware and accessories, insulator hardware and fittings, high tension electrical switches, earthing, grounding and conductor hardware and stay wires to name just a few.

We have a rich customer base not only in India but overseas as well. Countries in Central America, Africa, South East Asia as well as the Middle East are a part of our global clientele. It has been our honor to have catered to the most quality conscious consumers satisfactorily over the years. The superior quality of our products and our excellent customer services for many years has earned us goodwill and has contributed immensely to our reputation of being a reliable and trustworthy supplier to our clients worldwide.

The 35 plus years of experience and technical expertise has been our driving force and has enabled us to integrate and maintain the high standards of Quality, Reliability, Accuracy and Precision that are synonymous with our products.



Our Mission

To create value for all our stakeholders through superior quality products, efficient customer service and continuous development.



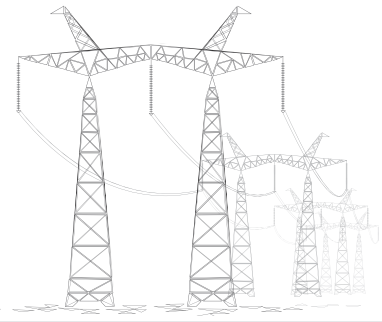
Our Objective

To provide a spectrum of engineering products to ensure safe, secure and uninterrupted transmission and distribution of electricity. To constantly upgrade and adapt to newer technologies while augmenting our overall capabilities.

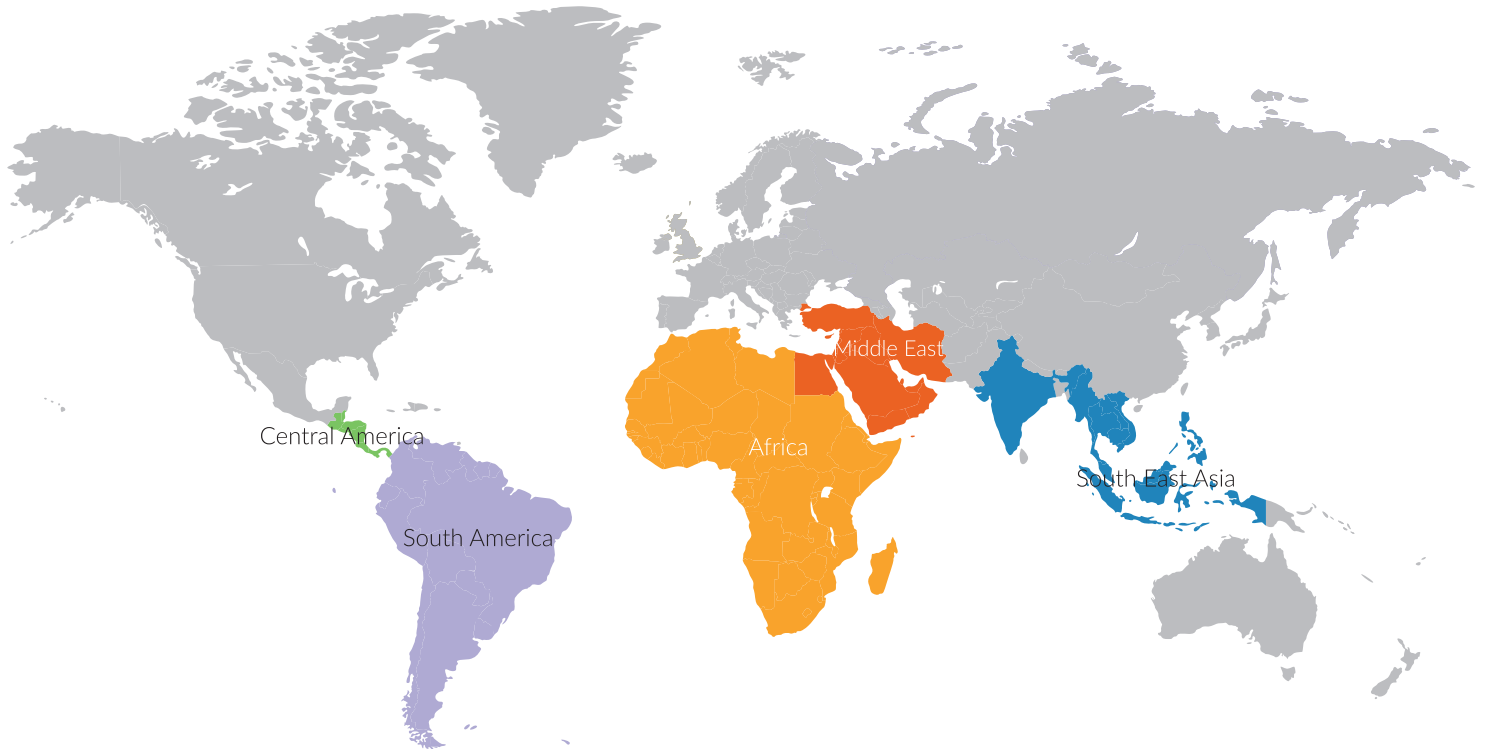


Corporate Policy

To establish sustainable and profitable relationships with customers, suppliers and the company employees.



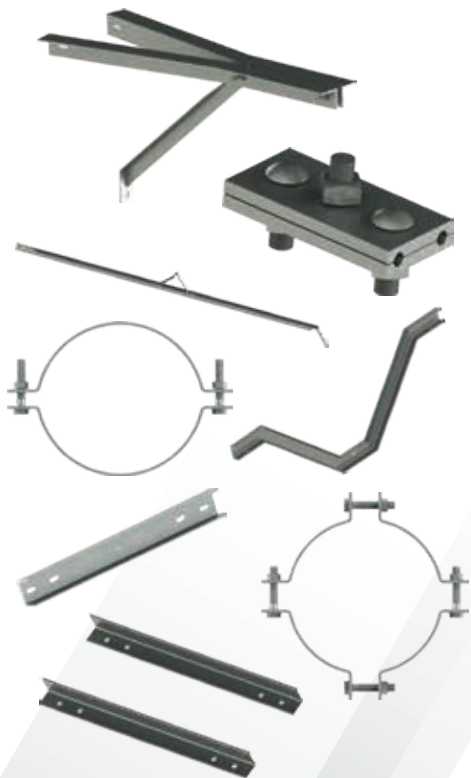
Global Footprints



Our Products

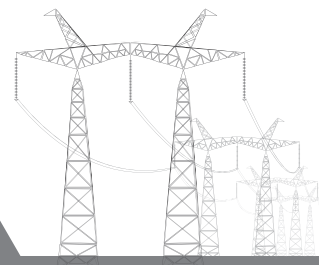
Anchoring Equipments

- ▶ Stay Rod - Oval Eye
- ▶ Stay Rod - Round Eye
- ▶ Stay Rod - Square Head
- ▶ Anchor Rod - Eye Type
- ▶ Anchor Rod - Thimble Eye
- ▶ Anchor Rod - Twin Eye
- ▶ Anchor Rod - Triple Eye
- ▶ Eye Bolt - Oval Eye
- ▶ Eye Bolt - Round Eye
- ▶ Eye Bolt - Thimble Eye
- ▶ Eye Bolt - Twin Eye
- ▶ Eye Bolt - Shoulder Eye
- ▶ Eye Bolt - Hook Type
- ▶ Turnbuckle - Tubular
- ▶ Turnbuckle - Crosshead & Bow
- ▶ Turnbuckle - Channel & Bow
- ▶ Turnbuckle - Angle & Bow
- ▶ Turnbuckle - Eye / Eye
- ▶ Turnbuckle - Jaw / Jaw
- ▶ Turnbuckle - Eye / Jaw
- ▶ Turnbuckle - Ht / Lt
- ▶ Turnbuckle - Bow
- ▶ Thimble - Open
- ▶ Thimble - Closed
- ▶ Stay Plate - Square
- ▶ Stay Plate - Octagonal
- ▶ Stay Plate - Round
- ▶ Base Plate - Square
- ▶ Base Plate - Octagonal
- ▶ Base Plate - Round
- ▶ Anchor Plate - Square
- ▶ Anchor Plate - Octagonal
- ▶ Anchor Plate - Round
- ▶ Helically Formed Guy Grip
- ▶ Helically Formed Pole Top Make-off
- ▶ Stranded Stay Wire
- ▶ Earth Wire / Shield Wire
- ▶ Stay Tightener - Eye / Eye
- ▶ Stay Tightener - Jaw / Jaw
- ▶ Stay Tightener - Eye / Jaw
- ▶ Stay Strap
- ▶ Stay Bracket
- ▶ Guy Hook
- ▶ J-guy Hook
- ▶ Thimble Eye Let
- ▶ Wire Rope Clamp
- ▶ Bulldog Grip



Pole Fittings & Accessories

- ▶ Pole Clamp - Rectangle
- ▶ Pole Clamp - Round
- ▶ Pole Clamp - Adjustable / Pole Band
- ▶ Pole Clamp - 2a
- ▶ Pole Clamp - Ca
- ▶ Pole Clamp - Deg
- ▶ Pole Clamp - Gca
- ▶ Pole Clamp - Rl
- ▶ Crossarm - Channel
- ▶ Crossarm - Angle
- ▶ Crossarm - Flat Brace
- ▶ Crossarm - Angle Brace
- ▶ Crossarm - Strut
- ▶ Crossarm - "V" Type Drop Span
- ▶ Crossarm - Tubular
- ▶ Strap - Section
- ▶ Strap - Terminal
- ▶ Strap - Extension
- ▶ Tie Strap - Straight
- ▶ Tie Strap - Twisted
- ▶ Brace - Alley Arm
- ▶ Brace - Side Arm
- ▶ Brace - Alley Arm Back Brace
- ▶ Brace - Guard Arm
- ▶ Cable Extension Arm
- ▶ Guy Clamp
- ▶ Cable Suspension Clamp - Straight
- ▶ Cable Suspension Clamp - Angled
- ▶ Crossarm Mounting Bracket
- ▶ Cable Loop Holder
- ▶ U-bolt
- ▶ Small Collar
- ▶ Big Collar
- ▶ Danger Plate
- ▶ Circuit Plate
- ▶ Phase Plate



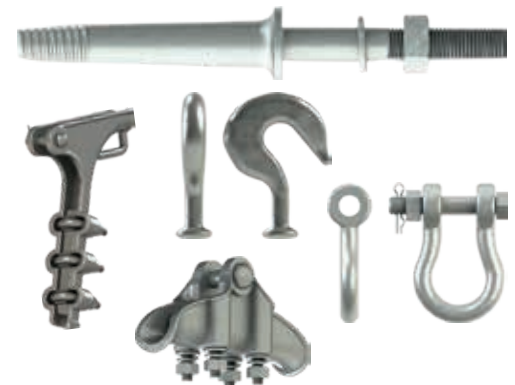
Fasteners

- ▶ Eye Bolt - Oval Eye
- ▶ Eye Bolt - Round Eye
- ▶ Eye Bolt - Thimble Eye
- ▶ Eye Bolt - Twin Eye
- ▶ Eye Bolt - Shoulder Eye
- ▶ Eye Bolt - Hook Type
- ▶ Eye Nut - Oval Eye
- ▶ Eye Nut - Round Eye
- ▶ Eye Nut - Thimble Eye
- ▶ Eye Nut - Twin Eye
- ▶ Eye Let
- ▶ Bolt - Hex
- ▶ Bolt - Square Head
- ▶ Bolt - Machine
- ▶ Bolt - Carriage
- ▶ Bolt - Clevis
- ▶ Bolt - Anchor
- ▶ Bolt - Single Upset
- ▶ Bolt - Double Upset
- ▶ Bolt - Double Arming
- ▶ Bolt - Pig Tail
- ▶ Threaded Rod
- ▶ Stud
- ▶ Cotter & Rivet
- ▶ Nut - Hex
- ▶ Nut - Square
- ▶ Nut - Lock Nut
- ▶ Round Flat Washer
- ▶ Spring Washer
- ▶ Square Flat Washer
- ▶ Square Curved Washer
- ▶ Taper Washer
- ▶ Pig Tail - Eye
- ▶ Screw - Pig Tail
- ▶ Screw - Lagged
- ▶ Screw - Coach
- ▶ U-nail / Staple
- ▶ Cotter Pin
- ▶ Humpback Split Pin
- ▶ Drive Hook



Insulator Fittings & Accessories

- ▶ Insulator Pin
- ▶ Pilot Insulator Pin
- ▶ Line Post Insulator Stud
- ▶ Pole Top Pin
- ▶ Crossarm Insulator Pin
- ▶ "D" Shackle
- ▶ Ball Ended Hook - Pig Tail Hook
- ▶ Ball Ended Hook - Horn Holder
- ▶ Ball Ended Hook
- ▶ Ball Ended Eye Link
- ▶ Ball Ended Eye Link - Horn Holder
- ▶ Ball Ended Eye Link - Horn Holder (Twisted)
- ▶ Ball Clevis
- ▶ Ball Clevis - Horn Holder
- ▶ Ball Tongue
- ▶ Ball Tongue - Horn Holder
- ▶ Socket Clevis
- ▶ Socket Clevis - Horn Holder
- ▶ Socket Tongue
- ▶ Socket Tongue - Horn Holder
- ▶ Socket Thimble
- ▶ Clevis Tongue
- ▶ Clevis Tongue (Twisted)
- ▶ Clevis-Clevis (Twisted)
- ▶ Adaptor
- ▶ Adaptor - Earthwire
- ▶ Strap - Terminating
- ▶ Strap - Section & Terminal
- ▶ Link - Single
- ▶ Link - Single Conversion
- ▶ Link - Parallel
- ▶ Link - Parallel Conversion
- ▶ Link - Cranked
- ▶ Link - Chain
- ▶ Link - Extension
- ▶ Plate - Landing
- ▶ Plate - Sag Adjuster
- ▶ Plate - Yoke
- ▶ Bracket - D-Iron
- ▶ Bracket - Pole Top

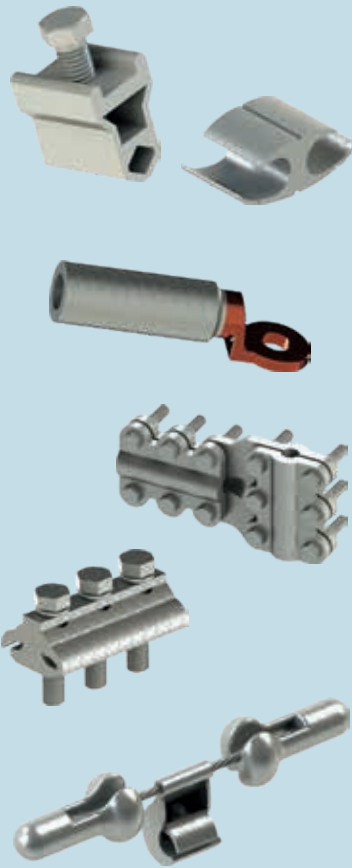


- ▶ Bracket - Post Insulator
- ▶ Swinging Clevis
- ▶ Secondary Racks
- ▶ Binding Strirrups
- ▶ Tension Clamp - Compression Type
- ▶ Tension Clamp - Bolted Type
- ▶ Tension Clamp - Snail Type
- ▶ Dead End Clamp - Compression Type
- ▶ Dead End Clamp - Bolted Type
- ▶ Dead End Clamp - Snail Type
- ▶ Strain Clamp - Compression Type
- ▶ Strain Clamp - Bolted Type
- ▶ Strain Clamp - Snail Type
- ▶ Suspension Clamp - Free Centre Type
- ▶ Suspension Clamp - Cradle Type
- ▶ Straight Line Clamp
- ▶ Thimble Clevis
- ▶ Armour Rod
- ▶ Helically Formed Top Tie
- ▶ Helically Formed Side Tie
- ▶ Helically Formed Twin Tie
- ▶ Helically Formed Dead End Grip
- ▶ Helically Formed Service Dead End
- ▶ Arcing Horn
- ▶ Corona Ring

Our Products

Conductor Fittings & Accessories

- ▶ Clamp - Parallel Groove
- ▶ Clamp - Universal Parallel Groove
- ▶ Clamp - Bimetallic Parallel Groove
- ▶ Clamp - "T" Connector
- ▶ Line Tap - Split Bolt
- ▶ Line Tap - Saddle
- ▶ Mid Span Compression Joint
- ▶ Repair Sleeve
- ▶ Compression Connector - "H" Type
- ▶ Compression Connector - "C" Type
- ▶ Compression Connector - Copper Lug
- ▶ Compression Connector - Aluminium Lug
- ▶ Compression Connector - Bimetallic Lug
- ▶ Vibration Damper - Stock-bridge
- ▶ Vibration Damper - Spiral
- ▶ Spacer
- ▶ Spacer Damper
- ▶ Armour Rod



Earthing Hardware

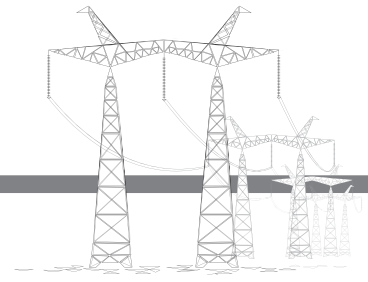
- ▶ Earthing Rod - Copper Bonded Steel
- ▶ Earthing Rod - Galvanized Steel
- ▶ Earthing Rod - Spike Earthing
- ▶ Ground Rod - Copper Bonded Steel
- ▶ Ground Rod - Galvanized Steel
- ▶ Earthing Pipe - Galvanized Steel
- ▶ Earthing Flat - Galvanized Steel
- ▶ Connector - Split Bolt
- ▶ Connector - Copper Strip
- ▶ Clamp - Ground Rod
- ▶ Clamp - Earthing Rod
- ▶ Clamp - Wire Rope
- ▶ Clamp - Bulldog Grip
- ▶ Coupling
- ▶ Drive Head



Aerial Bunched Cable (AB Cable) Fittings & Accessories

- | | |
|---|--|
| <ul style="list-style-type: none"> ▶ Suspension Clamp - Neutral Messenger ▶ Suspension Clamp - Self Supporting Type ▶ Anchoring Clamp - Neutral Messenger ▶ Anchoring Clamp - Self Supporting Type ▶ Anchoring Clamp - Pad Type ▶ Dead End Clamp - Neutral Messenger ▶ Dead End Clamp - Self Supporting Type ▶ Dead End Clamp - Pad Type ▶ Dead End Clamp - Bolted Type ▶ Service Clamp - Dead End ▶ Service Clamp - Anchoring ▶ Bracket - Suspension ▶ Bracket - Anchoring ▶ Bracket - Dead End ▶ Bracket - Universal Anchoring ▶ Bracket - Pole | <ul style="list-style-type: none"> ▶ Bracket - Hook ▶ Hook - Eye ▶ Hook - Pig Tail ▶ Hook - Flat Eye ▶ Bolt - Eye ▶ Bolt - Pig Tail ▶ Helically Formed Dead End ▶ Screw - Pig Tail ▶ SS Buckles ▶ SS Strap ▶ Bimetallic Pre insulated lugs ▶ Bimetallic lugs ▶ Pre-Insulated Mid Span Joint ▶ Junction Sleeve ▶ End Cap ▶ Insulated Piercing Connector |
|---|--|





Insulators

- ▶ Porcelain - Pin Insulator
- ▶ Porcelain - Disc Insulator
- ▶ Porcelain - Post Insulator
- ▶ Porcelain - Shackle Insulator
- ▶ Porcelain - Reel Insulator
- ▶ Porcelain - Guy Insulator
- ▶ Porcelain - Stay Insulator
- ▶ Polymer - Pin Insulator
- ▶ Polymer - Disc Insulator



Surge Arresters

- ▶ Porcelain - Surge Arrester
- ▶ Polymer - Surge Arrester

Fuse, Switches & Isolators

- ▶ Fuse - Drop Out
- ▶ Fuse - Horn Gap
- ▶ Fuse Drop Out And Air Break Switch
- ▶ Switch - Air Break
- ▶ Switch - Link
- ▶ Isolator

Telecommunication Accessories

- ▶ Bridle Ring
- ▶ Anchoring Eye
- ▶ Drive Hook
- ▶ Riser Guard
- ▶ Distribution Bracket
- ▶ Distribution Clamp
- ▶ Drop Span Clamp
- ▶ Service Drop Wire Clamp
- ▶ Drive Ring



OPGW & ADSS Accessories


- ▶ Tension Assembly
- ▶ Dead End Assembly
- ▶ Suspension Assembly
- ▶ Down Lead Clamp
- ▶ Vibration Damper






ADCO OVERSEAS

 133, Canning Street, Kolkata - 700 001
West Bengal, India

 +91 33 2242 4918, 2243 3121
+91 90388 10999

 info@adcooverseas.com
adcooverseas@gmail.com

 www.adcooverseas.com

