



**ELECCSSOL**  
energizing earth, the solar way



**Polaris MODEL**

**ALL IN ONE**

# SOLAR STREET LIGHT with CCTV Camera



Wifi Connected  
CCTV Camera



Solar Power  
Charging



PIR Motion  
Sensor



SD Card  
Supported



[www.elecssl.com](http://www.elecssl.com)

# ALL IN ONE

## Solar Street Light with CCTV

**POLARIS MODEL**

### Product Description

This product is an integrated solution for CCTV monitoring and Solar lighting. It comes with an internal Lithium battery pack, a high lumen LED lamp, An advanced MPPT charge controller, A highly efficient solar panel, optional PIR sensor (motion sensor) for dimming and inbuilt Full HD 1080p camera. All parts

### Core Features

- 24 Hours WiFi Connected Full HD Camera Surveillance
- Solar Powered
- 12.8V 30Ah – 42Ah LiFepo4 Battery Powered
- Automatic Dusk and Dawn Detection
- Audio-Video Recording in 1080p with Wide Viewing Angle for Larger Area Coverage
- Remote Live View from Anywhere (Android/PC/IPhone)
- Optional PIR Sensor for Dimming at no Motion
- High Lumen, Super Long Life Span LEDs
- Unique Body Design with Adjustable Mounting Option
- Dust-Proof, Rust-Proof and Rain-Proof
- Two Stage Battery Charge Algorithm for Greater Battery Life
- Cable Free Installation
- Advance MPPT Charge Controller with Ultrafast MPPT Algorithm





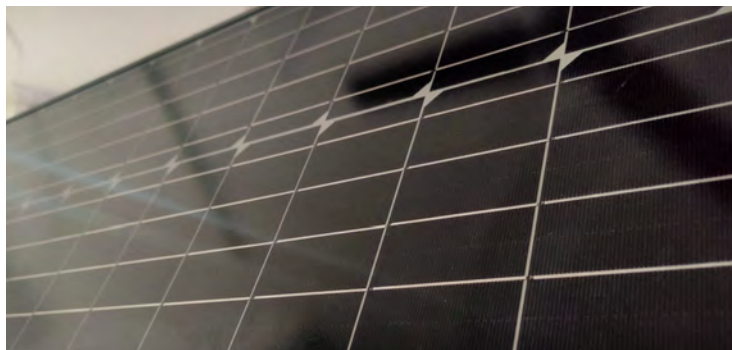
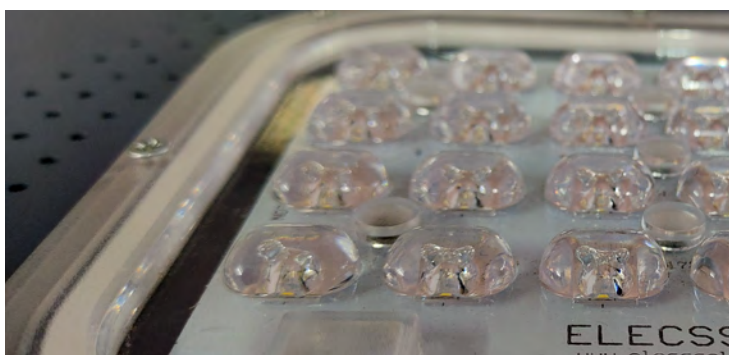
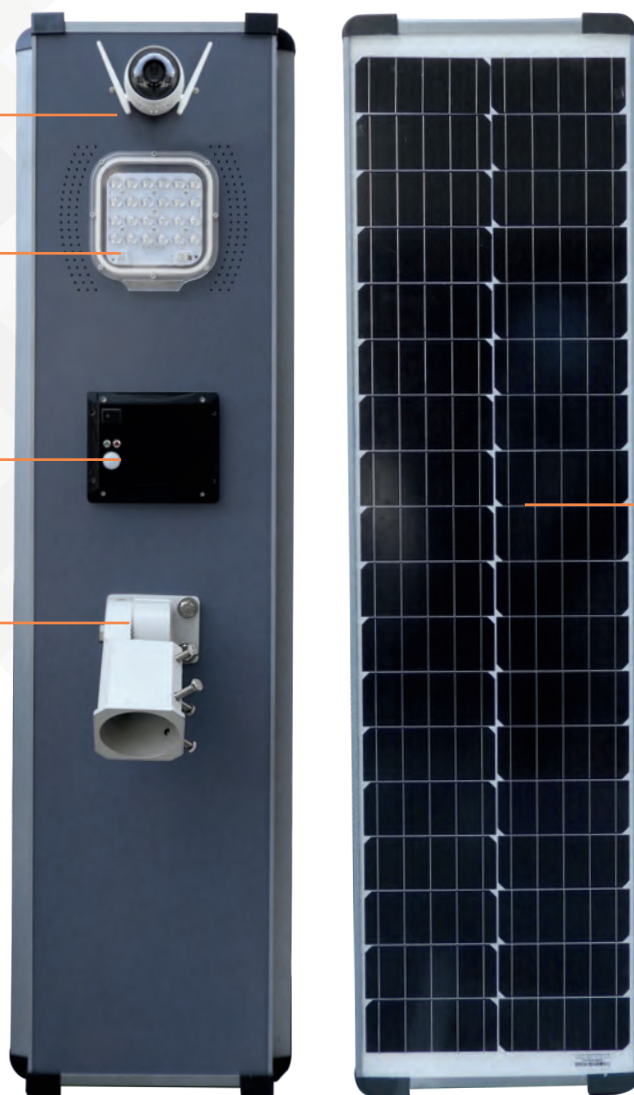
24 Hours Surveillance  
Full HD CCTV Camera

High Lumen  
LED Lamp

Advanced MPPT  
Charge Controller

Adjustable Mounting  
Option

High Efficient  
Solar Panel  
for Charging



## How Does a Solar Powered Camera Operates ?

This All in one system stores energy from solar panels into its internal Lithium battery with maximum power point tracking algorithm and stored energy in the battery which is used for 24-hours CCTV surveillance and powering LED lamp at night.

Full HD 1080p camera helps to monitor high resolution live streaming and its wide viewing angle makes it perfect for watching larger area coverage. High quality Video and Audio-recording feature of camera enables users to watch previous activities.

The camera data is transmitted through the wifi-router internet connection. It can be accessed through a local Wi-Fi network. Image clicked through App is attached here with.





## POLARIS MODEL

## ALL IN ONE

## Solar Street Light with CCTV



MODEL NO.	15W CCTV AIO	25W CCTV AIO	30W CCTV AIO
CAMERA SPECIFICATIONS			
Live Streaming	→	Supported	←
Camera Lens Type	→	Fixed lens	←
Camera Resolution	→	1080p	←
Infrared Night Vision Range	→	30m	←
Network Interface	→	WiFi	←
Viewing Angle	→	110 degree	←
Audio Recording	→	Supported	←
Video Recording	→	Supported	←
Storage	→	Support MicroSD upto 256GB	←
Power Input	→	Solar Powered	←
SOLAR PANEL SPECIFICATONS			
Panel Type	MONO Crystalline	MONO Crystalline	MONO Crystalline
Maximum Power Output	75W	120W	150W
Open Circuit Voltage (Voc)	21.6 VDC	21.6 VDC	21.6 VDC
Maximum Power Voltage (Vmp)	18 VDC	18 VDC	18 VDC
Short Circuit Current (Isc)	4.62A	4.62A	4.62A
Maximum Power Current (Imp)	4.16A	4.16A	4.16A
Efficiency Range	15.2%	15.2%	15.2%
Type	Power LED	Power LED	Power LED
Luminous Efficacy	>140 Lumens/W	>140 Lumens/W	>140 Lumens/W
CCT / Colour Code	6000-6500 °K	6000-6500 °K	6000-6500 °K
CRI	>80	>80	>80
Life Time	50,000 Hrs	50,000 Hrs	50,000 Hrs
BATTERY SPECIFICATIONS			
Battery Type	LiFePo4	LiFePo4	LiFePo4
Operating Voltage	12.8 VDC	12.8 VDC	12.8 VDC
Current Capacity	36 Ah	42 Ah	48 Ah
Protection	Battery Overcharge, LED Open Circuit , LED Short Circuit, Battery Reverse Connection, Panel Reverse Connection, Reverse Current Flow from Panel , Overheat		
Features	Deep Battery Charging, Dusk to Dawn ,CCTV surveillance, Video and Audio Recording		

## Applications



Road Lighting-Rural / Urban



Residence / Bungalows



School/ Colleges/ Universities



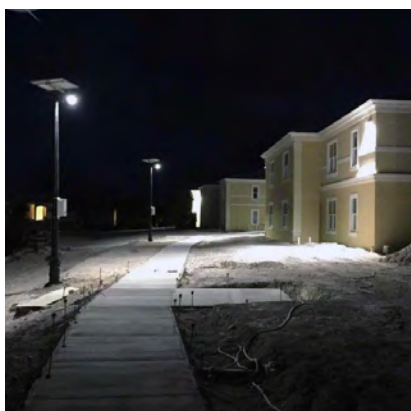
New Construction Sites



Parking Lighting



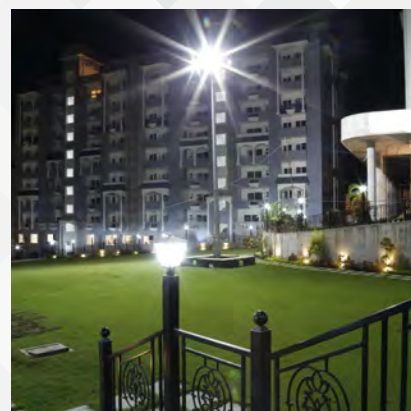
Hospitals Lighting



Industrial establishments / SEZ's

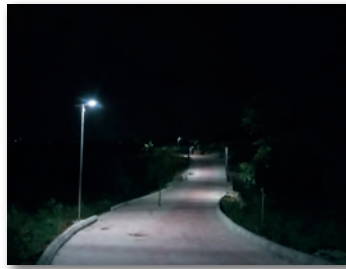


Smart City



High-Rise Apartments

## INSTALLATION IMAGES



Manufactured By :  
**Devang Solaar**

**Corporate Office:**

4/16, Site-4, Adarsh Industrial Area, Sahibabad,  
Ghaziabad (U.P.) -201010 (INDIA)

T: +91 120 4377024 /25 / 26, Mob: +91 9560722534 | E: info@elecssl.com

**Lucknow Office**

B-2033, Indra Nagar,  
Lucknow (U.P.) -226016 (INDIA)

**Bangalore Office**

833/1 4th Floor sai Durga Enclave Outer Ring Road  
Bellandur, Bangalore - 560103 (INDIA)

**Kolkata Office**

29 A, Rabindra Sarani, Near Poddar Court,  
Kolkata -700073 (INDIA )

**Patna Office**

Block A, Ashoka Palace , Shop No-5, Exhibition Road,  
Patna - 800001 (INDIA)



**Customer care**

7303118410