



PES ELECTRICAL PVT LTD.

Quality Makes
Relationship

Prepaid Energy Meter



OUR VISION

PES ELECTRICAL PVT. LTD. shall be the most trusted, respected and preferred brand for Energy Meters in India and abroad.....

OUR MISSION

Our Mission is to provide innovative energy solutions and products on the go every day everywhere.



Why PES Electrical ?

- 1.All Products under one roof
- 2.Simple Networking, easy to Maintain
- 3.Extended Warranty optional upto 15 years directly from us
- 4.No Third party intervention_as all products manufactured by us.
- 5.Customize solutions as per need
- 6.User-friendly mobile apps for android and apple users
- 7.Best price and service
- 8.Open to share data through API as required
- 9.Include meters and all hardware in comprehensive maintenance.
- 10.Unconditional warranty repair or replacement.



The Ideal Solution for Prepayment of Electricity For PG/Rented Building

No Outstanding Debts



No Collection Hassles



No Credit Problems



No Bills



No Administration



Easy Management



No Arrears Collection



Risk & Hassle Free



No Tenant Disputes



Continuous Support



WHO USES OUR SERVICES?

- Landlords
- Body corporates
- Municipalities
- Property Managers
- Flats or group of flats
- Paying guest properties
- Small Rented Properties
- Street light Management
- Basement Light Management
- and more.....

INSTALL IN...

- Houses, Apartments, Cottages
- Stores & Factories
- Commercial & Industrial Units
- Vacation Rentals & more...

Quality Policy:

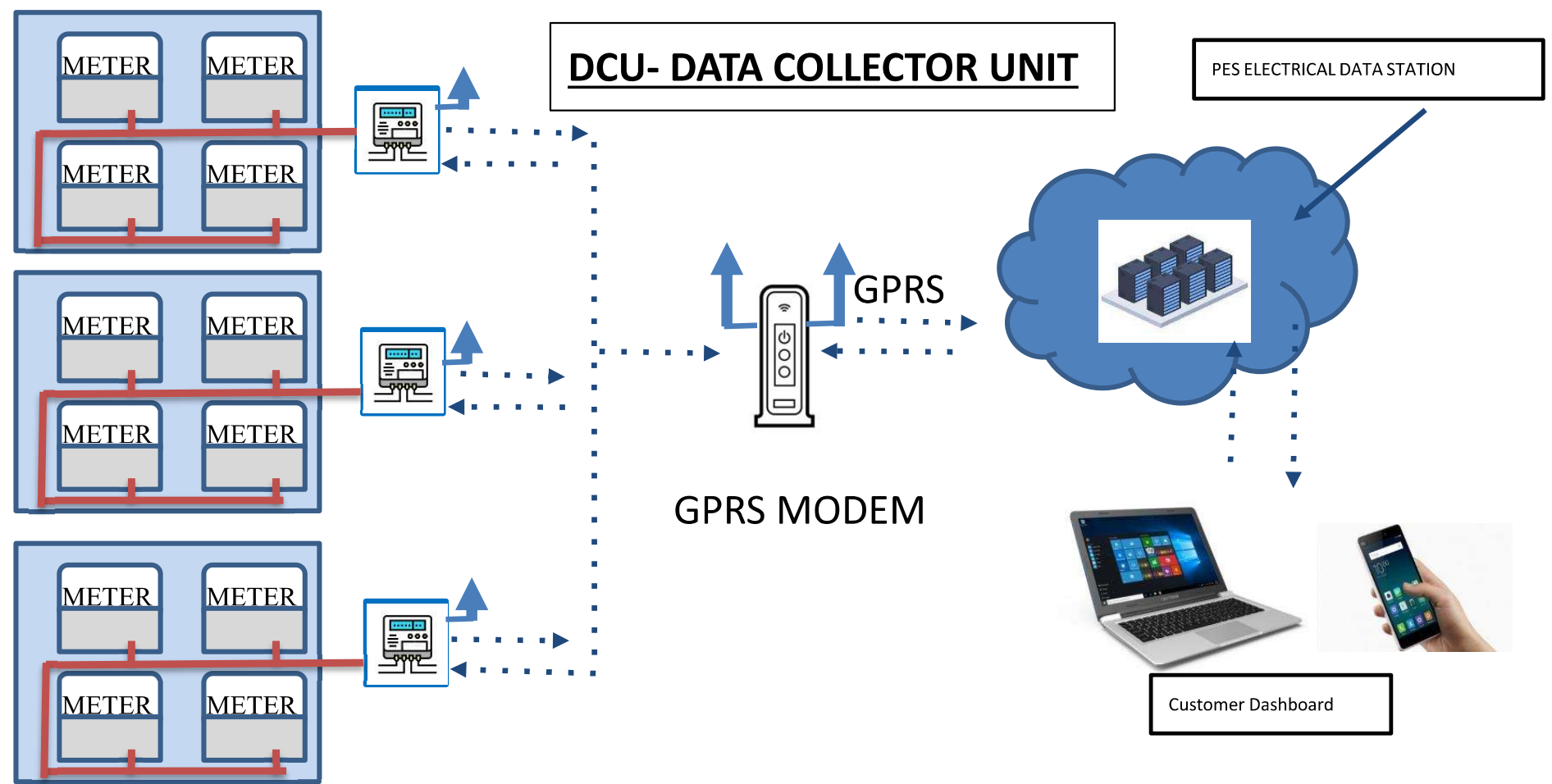
- *We constantly Endeavour to meet the exacting demands of our customers while maintaining the competitiveness through continuous improvements.*
- *We are ISO 9001:2008 certified company & we shall implement this policy statement by:*
 - Setting quality objectives at all levels of the Organization and providing adequate resources.*
 - Continual improvement of processes through optimum use of resources.*
 - Ensuring involvement of employees in all areas of operation.*
 - Reviewing targets and objectives at regular intervals.*
 - Improving effectiveness of quality management System.*
 - Continuous improvement of our processes, and systems.*
 - Ensuring our personnel is properly trained so they are better able to serve our customers.*



Quality Makes
Relationship



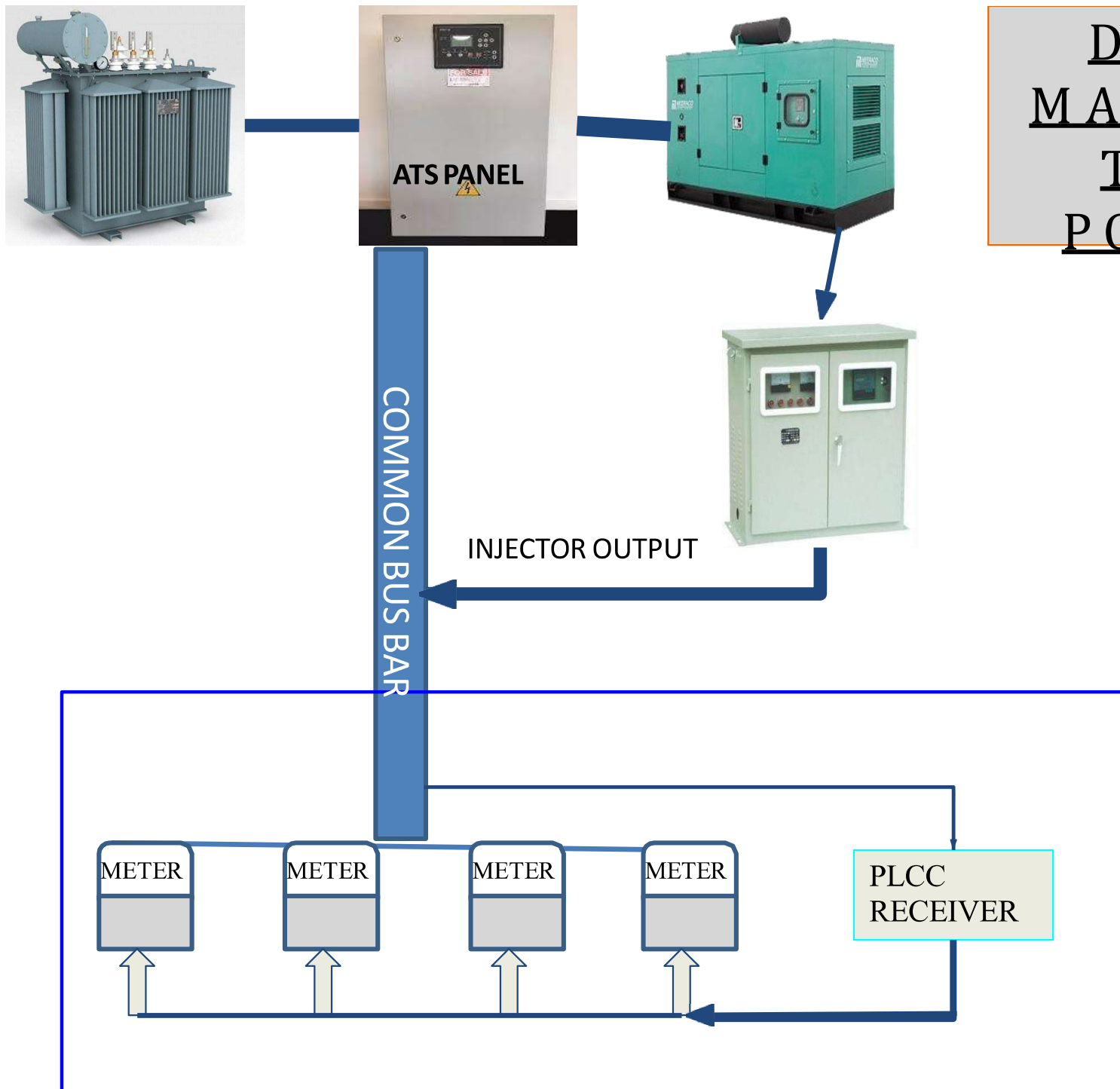
HOW YOUR SOCIETY WILL MANAGED BY PES ELECTRICAL PVT. LTD



Prepaid Energy metering Scheme through GPRS MODEM



DG SIGNAL MANAGEMENT THROUGH POWER LINE



Components Used for PES - Prepaid Metering System

Sr. No	Product	Source/Manufacturer
1	Energy Meter with Inbuilt cut-off	In-House manufacturing
2	WIRELESS DCU	In-House manufacturing
3	GPRS MODEM	In-House manufacturing
4	In-Home wireless Display / DG-MAINS INDICATOR(optional)	In-House manufacturing
5	PLCC-Injector	In-House manufacturing

Cloud Server

- Stable Monthly cost without any initial capital
- Limitless expansion of your servers based on your needs
- Saving on maintenance cost.
- Excess your data from anywhere without any additional cost.
- Online payment can be possible through Debit/Credit card/Paytm
- Very less maintenance cost
- Data accessible through Smartphone
- No IT support team will be required for the maintenance of the hardware and software of your server.
- We provide third party integration for your better management(like adda, Society connect, NBH, Mygate, Paytm)

Street Light Management

Scheduling and controlling of street light programming through server.

Scheduling and controlling of common area light, like basement lights, stair lights through Smart Meter.

Aviation light can be controlled through smart meter

Each phase on/off as well as load limit of each phase is programmable from server, hence it plays a very active role in energy conservation by controlling and scheduling of energy of different area, like street lights, aviation lights on tower, common area, staircase area, basement lights etc.

How it can save energy for residents

Each phase can be controlled through programmed hence meter can be regulate in different mode like Grid mode, Dg Mode.

Prepaid Meter V/S General Meter

SR.NO.	PREPAID ENERGY METER	GENREAL METER
1.	Advance Payment received	Payment received after consumption
2.	Load Limit can be assigned	Load limit cannot be assigned
3.	Overvoltage protection is available	Not available
4.	Disconnection facility due to Earth fault	Not available
5.	Disconnection facility due to Neutral Miss safety	Not available
6.	Mobile app available	Not available
7.	Communication facility available	Not available
8.	Two- source measurement available	Not available
9.	DG/Mains Source sensor available	Not available

SR.NO.	PREPAID ENERGY METER	GENREAL METER
10.	Low Balance alert	Not available
11.	Third Party Integration	Not available
12.	Magnetic Tempering Safety	Not available
13.	Power Source Change Alert	Not available
14.	CAM Prepaid Facility	Not available
15.	Power Back up Block Safety	Not available
16.	Independent Load Limit on Mains & DG	Not available
17.	Over Load Safety	Not available
18.	Auto Bill Summary Share on Customers Mail	Not available
19.	Phase Neutral Reverse Safety	Not available
20.	Warranty Extension up to 15 years	Not available
21.	Home Display Unit Wi-Fi based available	Not available
22.	Disconnection Facility due to credit expiry	Not available
23.	Disconnection Facility due to Overload limit	Not available

Why you should consider PES Make?

Single Phase Prepaid Meters Features-

1. Reference Standard
2. Country of Origin
3. Manufacturers Name
4. Place of Manufacturer
5. Starting Year of Manufacturer
6. Model of Meter
7. Type
8. Connection
9. Rated Voltage
10. Maximum Voltage
11. Basic Current
12. Maximum Current
13. Frequency
14. No. of Terminal
15. Diameter of Terminal Board

Technical Specifications

IS-13779(2020)
INDIA
PES Electrical Pvt. Ltd.
Faridabad
2012
EM-12
Outdoor
1-Phase, 2-Wire unidirectional
280 V
230 V
 ≤ 5 Amp
 ≥ 60 Amp
50 Hz
4
6 mm to support 10 sqmm cable

16. Voltage Circuit loss at rated Voltage
17. Current Circuit loss at rated current
18. Power factor range
19. Variation of voltage
20. Impluse with stand voltage
21. Starting current (minimum)
22. KWH registered type
23. Meter constant
24. Accuracy Class
25. Disconnection Facility

26. Time interval of recalibration
27. Service life (minimum)
28. Communication compatibility
29. Communication Port
30. Communication Protocol

31. Online Connectivity

5VA, 2 Watt

2.5 VA

0.5 lag to 0.8 lead

+/- 30%

6 KV

0.01% of basic

LCD display

1000 pulses per KWH

1

- **On credit Expiry**
- **Overload limit**
- **Earth fault**
- **Over voltage**
- **Magnetic tempering**
- **Reverse phase & neutral**
- **Neutral Missing**
- **DG backup blocking**

5 years

15 years

GPRS, ZigBee, wifi

RS 232(optional)

Modbus

YES

32. Warranty Extension 15 years (optional)	YES
33. Contactors Rating	80 Amps
34. Current Rating	5-60 Amps
35. No. of Latching Contactors & CT set	2
36. Neutral Miss Safety	Available
37. Earth Fault Safety	Available
38. Over Voltage Safety	Available
39. Over Load Safety	Available
40. Magnetic Tempering Safety	Available
41. Phase Neutral Reverse Safety	Available
42. Independent Load Limit on Mains & DG	Available
43. Power Back up Block Safety	Available
44. Working Temperature	-20 to 65c
45. Mobiles App	Available
46. Low Balance Alert	Available
47. Power Source Change Alert	Available
48. Third Party Integration	Available
49. Monthly Bill Summary	Available
50. Auto Bill Summary Share on Customers Mail	Available
51. Outline Dimension	LxWxH;225x175x85mm
52. Installation Dimension	LxW;350x350mm
53. Weight	Approx. 2 kg
54. DG/ mains Source Sensor	230 V AC
55. Home Display Unit (optional)	Wifi Based

Why you should consider PES Make?

Three Phase Prepaid Meters Features-

1. Reference Standard
2. Country of Origin
3. Manufacturers Name
4. Place of Manufacturer
5. Starting Year of Manufacturer
6. Model of Meter
7. Type
8. Connection
9. Rated Voltage
10. Maximum Voltage
11. Basic Current
12. Maximum Current
13. Frequency
14. No. of Terminal
15. Diameter of Terminal Board

Technical Specifications

IS-13779(2020)
INDIA
PES Electrical Pvt. Ltd.
Faridabad
2012
EM-32
Outdoor
3-Phase, 24Wire unidirectional
500 V
440 V
<=10 Amp
>=60 Amp
50 Hz
8
10 mm to support 16 sqmm cable

16. Voltage Circuit loss at rated Voltage
17. Current Circuit loss at rated current
18. Power factor range
19. Variation of voltage
20. Impulse with stand voltage
21. Starting current (minimum)
22. KWH registered type
23. Meter constant
24. Accuracy Class
25. Disconnection Facility

26. Time interval of recalibration
27. Service life (minimum)
28. Communication compatibility
29. Communication Port
30. Communication Protocol

31. Online Connectivity

5VA, 2 Watt per phase
2.5 VA per phase
0.5 lag to 0.8 lead
+/- 30%

6 KV

0.01% of basic

LCD display

1000 pulses per KWH

1

- **On credit Expiry**
- **Overload limit**
- **Magnetic tempering**
- **DG backup blocking**

5 years

15 years

GPRS, ZigBee, wifi

RS 232(optional)

Modbus 32 bit encryption
with 16 bit encryption key

YES

32. Warranty Extension 15 years (optional)	YES
33. Contactors Rating	80 Amps
34. Current Rating	10-60 Amps
35. No. of Latching Contactors & CT set	3
39. Over Load Safety	Available
40. Magnetic Tempering Safety	Available
42. Independent Load Limit on Mains & DG	Available
43. Power Back up Block Safety	Available
44. Working Temperature	-20 to 65c
45. Mobiles App	Available
46. Low Balance Alert	Available
47. Power Source Change Alert	Available
48. Third Party Integration	Available
49. Monthly Bill Summary	Available
50. Auto Bill Summary Share on Customers Mail	Available
51. Outline Dimension	LxWxH;225x175x85mm
52. Installation Dimension	LxW;350x350mm
53. Weight	Approx. 2 kg
54. DG/ mains Source Sensor	230 V AC
55. Home Display Unit (optional)	Wifi Based

Feature of prepaid energy meter

- Meter is of ISI marked.
- Meter is 100% temper proof. If user will try to temper the meter, SMS alert will also sent to the facility team.
- System is capable to generate various customized report as required.
- Data Collection for billing is automatic on real time basis. Bill preparation & distribution of bill is automatic and sent to the facility team. .
- Accuracy of the Prepaid Energy Meter is of Class 1.
- Each Energy Meter is starts as prepaid energy meter from the first day of installation.
- A log of 45 days is available for transparency between user & facility team, if any conflict occurs.
- If the line loss increase above the defined limit, system will generate an export & import analysis & notification alert will sent to the concerned executive.

Feature of prepaid energy meter

- There is no need to visit physically to the meter *for load limit, tariff, coupon generation* as it can be done remotely by sending unique customer code to the facility team.
- Bill Generation indicates other charges/Common Area Charges, corresponding unit consumed in the previous year of the same month etc as required by the facility management team.
- Bill indicates energy consumption records on Mains & DG Separately.
- Prepaid meter have separate records of Mains. If balance is zero, only mains supply will disconnect.
- Prepaid meter have separate records of DG. If balance is zero, only DG supply will disconnect.
- Energy Management: Software is user friendly window based.
- The prepaid metering system is Full Proof Auto Sensing DG & Mains on PLC based.

Feature of prepaid energy meter

- A bills statement is customized as per flat-wise or slab-wise.
- The Energy meter is automatically cut-off on zero balance or overload.
- There is separate database for the number of coupon sold.
- Load management is done with a single button on DG backup, in case of emergency & rollback of old data on restoration of main power supply.
- Simple networking, hence less maintenance which makes cost effective to our client.
- Suitable for large & very large network.
- **We provide first login for the maintenance department wherein he can just check the log.**
- **We provide the second login for Admin, who can see the data, charge the meter and change the load and other credentials.**
- **We provide the third login for super admin who have all the access as admin have along with that he can switch on/off the meter from the software.**
- Any change done by any of the level or login is recorded in the software.



Feature of prepaid energy meter

- In case users do not pay their bills on time or try to temper the system, then the system is capable of disconnection their incoming supply after giving SMS warning. The Software is capable of introducing such features as per the requirements of the facility management.
- A SMS alert will sent to the user in case of low balance is available for a specific user.
- The system will provide Import/Export energy consumption analysis for controlling line loss.
- Pre-payment scheme can activate or de-activated as required.
- There is Happy-hours for no disconnection on specified holidays etc. as desired by the facility management.
- If the load exceeds beyond 100%, then system will automatically switch to Auto-Cut Mode on overload & automatically switch on to the reset mode when the load is reduced.
- Display of all energy parameter & live balance with DG Indication is available on the PC as well as on the individual meters.
- The user can see the live Reading/Balance on their mobile.
- All the messages are recorded in the software memory, If customer have excuse then we have data along with us for transparency.
- We give the option of payment through Net Banking (Bank will be provided by Developers)

Our Products



THREE PHASE ENERGY METER

Available in:-

- Three Phase Dual Source Panel Multifunction Meter
- Three Phase Dual Source Prepaid Energy Meters
- Three Phase Dual Source Wall mounted Multifunction Meter
- Three Phase Single Source Panel Multifunction Meter
- Three Phase Single Source Prepaid Energy Meter
- Three Phase Single Source Wall mounted Multifunction Meter



Available in:-

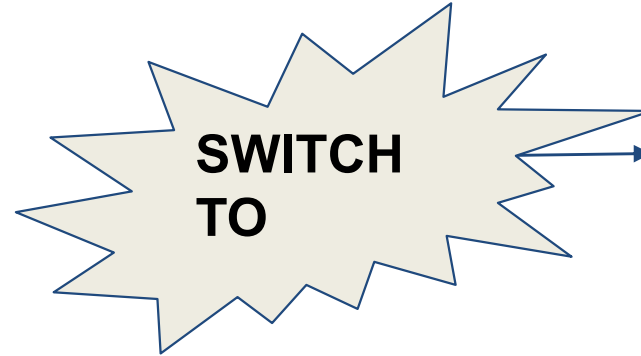
- **Single Phase Dual Source Prepaid Energy Meter**
- **Single Phase Dual Source Multifunction Meter**
- **Single Phase Single Source Prepaid Meter**
- **Single Phase Single Source Multifunction Meter**

SINGLE PHASE ENERGY METER



PES ELECTRICAL PVT.LTD.

TIRED OF WAITING FOR
SMS OF DAILY
ELECTRICITY BALANCE
??



WIFI SMART HOME DISPLAY UNIT

- **MONITOR** your live Electricity Balance,kwh,load limit,source
- **Allowing** customer to monitor consumption.
- **Display** all parameters including balance.
- **Fast and reliable** customer support.
- **Display** blinks to indicate low balance or at the time of power source change
- **Easy to setup and install**
- **Easy to Configure.**





SPECIALITY

- LED Blink to show power is mains or DG
- Wireless, work on PLCC carrier
- Dual tone Beep alert when source change
- Plug and Play device

DG/MAINS INDICATOR

AMC SERVICES FOR THIRD PARTY ENERGY METERS



Undertake for: AMC for Housing Society Energy Meter of Any Brand especially Radius system, Elmeasure, Kruti, Trinty, Spi, Itron, Crystal, Neptune, Innersol, Hpl.

Our speciality :

1. Android and Apple mobile application to show live balance, load, kwh, etc.
2. Undertake Comprehensive Maintenance including Meters.
3. Support Third party integration.
4. Dedicated CRM team
5. Dedicated IT team
6. Dedicated Hardware maintenance team
7. Customize Solutions and reports
8. Dedicated Chip level repairing team
9. Flexible payment option
10. Full system exposure to maintenance team

PES ELECTRICAL INTRODUCES



10+ Years of AMC Service For Energy Meters

We are the best to provide customized service, maintenance, and repairs of all makes and models

of ENERGY METERS at a fair price.

LIST OF GROUPS WE ARE SERVING



AND MANY MORE...

Key Features

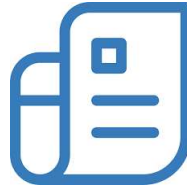
All our Energy Meters are compliant with IS:13779 specifications from BIS. This ensures that all Electricity Meters meet the required quality and precision standards. All PES ELECTRICAL devices installed as a part of the solution are made from industrial-grade specifications components, thereby ensuring an installation that works reliably under all weather conditions for several years.



PES
DASHBOARD



MOBILE APPS



BILL GENERATION



ONLINE
RECHARGE

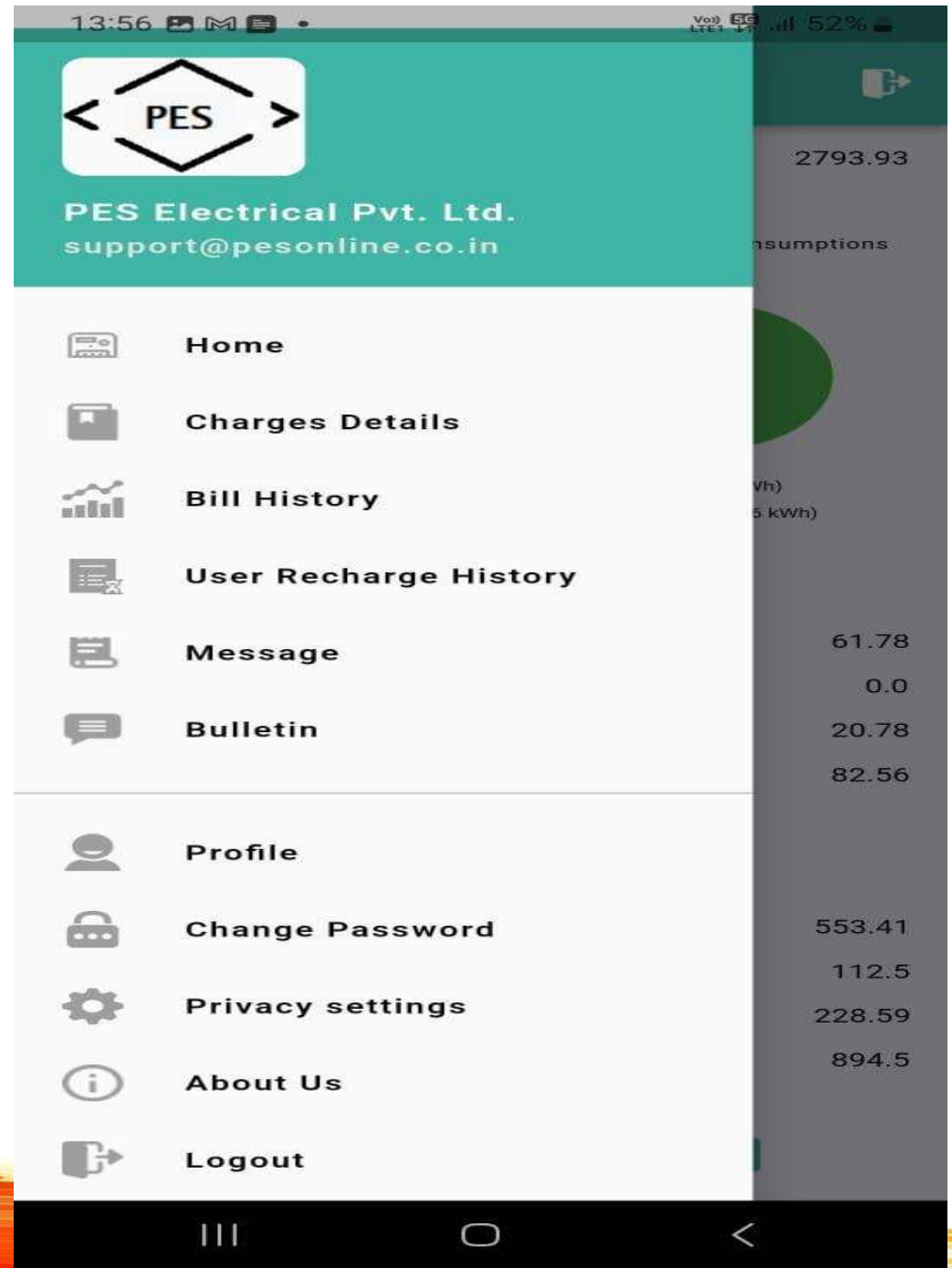
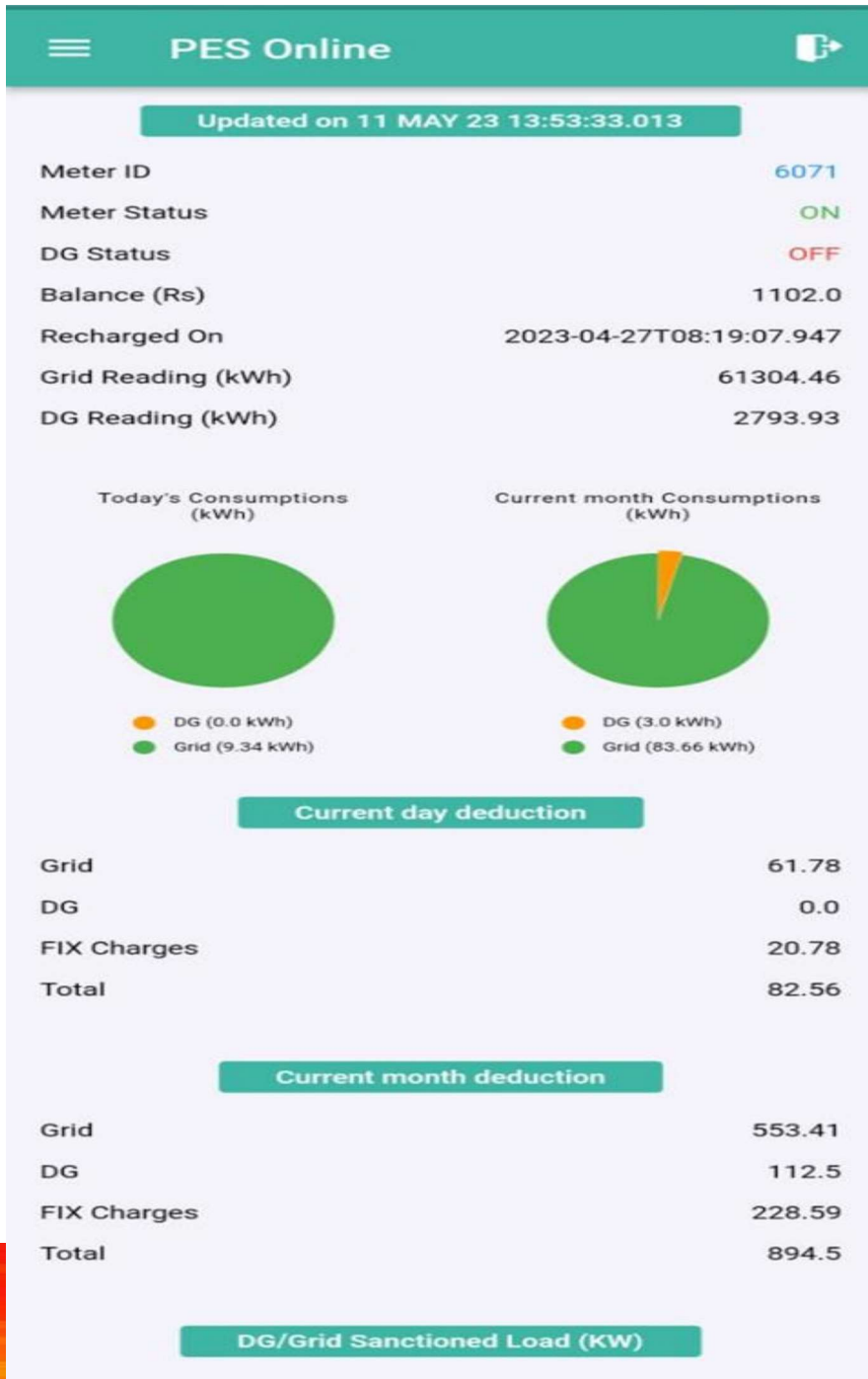


PROTECT
REVENUE LOSS

Benefits

1. User-friendly ios and android mobile apps.
2. Real-time energy consumption (kWh) and balance (Rs.) amount
3. Safe and secure online recharge.
4. Real-time alerts for energy source switch.
5. Personalized demand management to optimize consumption.
6. Transparency in tariff slabs, consumption & billing.
7. Third party Integration such as Paytm, Adda, Mygate, ISociety, SocietyManager, NoBrokerHood.

USER APPLICATION BOTH IN IOS AND ANDROID



CUSTOMER DASHBOARD FOR LAPTOP AND TABLET

Mr. Mehul Agarwal & Teena agrawal

Updated on May 11, 2023 at 1:58:41 PM

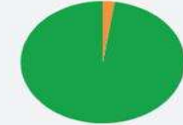
Meter Id	1013
Meter Status	On
DG Status	OFF
Balance (Rs)	4395.0
Recharged On	May 6, 2023 at 10:20:12 PM
Grid Reading (kWh)	74891.8
DG Reading (kWh)	2752.51

Today's Consumptions (kWh)



● DG (0.0 kWh)
● Grid (11.27 kWh)

Month's Consumptions (kWh)



● DG (3.06 kWh)
● Grid (127.8 kWh)

Current Day deduction

Grid	74.52
DG	0.0
Fix Charges	26.21
Total	100.73

Current Month deduction

Grid	845.43
DG	114.75
Fix Charges	288.31
Total	1248.49

Dg/Grid Sanctioned Load(KW)

Grid	5.0
DG	5.0



Mr. Mehul Agarwal & Teena agrawal

1013
On
OFF
4395.0
at 10:20:12 PM
74891.8
2752.51

Today's Consumptions (kWh)



● DG (0.0 kWh)
● Grid (11.27 kWh)

Current Month deduction

Grid	845.43
DG	114.75
Fix Charges	288.31
Total	1248.49

PES Electrical Pvt.Ltd.

support@pesonline.co.in

- [Home](#)
- [Charge Details](#)
- [Bill History](#)
- [User Recharge History](#)
- [Message](#)
- [Profile](#)
- [Change Password](#)
- [Privacy setting](#)
- [MeterLog](#)
- [View Bill](#)
- [About us](#)
- [Logout](#)



OUR CLIENTS AND PARTNER



WAVE
City



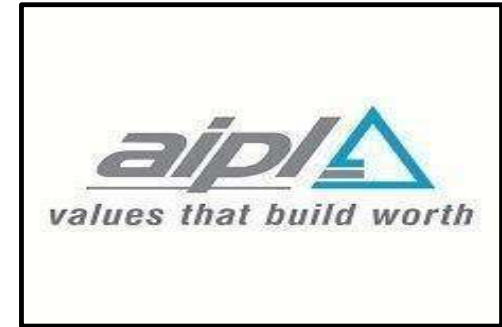
Logix Group
The life you deserve



REALTORS PVT LTD



Parsvnaths
committed to build a better world



And many more.....

FOR MORE INFO

VISIT- <https://www.peselectricals.com>

E-MAIL- sales@pesonline.co.in

PHONE - 9311894040- Jyoti Yadav

(Sales & Marketing Manager)

9667791595- Tanu Singh

(Sales Executive)

Work add- Pes Electrical Pvt. Ltd., Plot no.1,
Sector-73, Faridabad, Haryana- 121004

