



Gst no. : 09CCBPS4734A1ZR



SHASHIARUN SOLAR TRACKERS AND POWER PLANTS

C-214, Sector - 10, Industrial Area,
Gautam Budh Nagar, Noida - 201301



SHOULD I GO FOR A SUN TRACKING SYSTEM OR A FIXED STRUCTURE SYSTEM?

I have space less than,
{use formula:
 $8 \times (\text{Total Kw of solar panels required})$ } sq. mtr.

**Fixed
structure**

I have space of atleast,
{use formula:
 $6.4 \times (\text{Total Kw of solar panels required})$ } sq. mtr.

**Sun tracking
structure**

Also, must for

- ▶ Off-Grid systems (compensates for heavy battery and inverter losses)
- ▶ Offices and schools (solar generation will match with load profile by almost stabilizing generation at different times of day)
- ▶ Residences (25% greater energy generation means 25% more savings on your electricity bill)



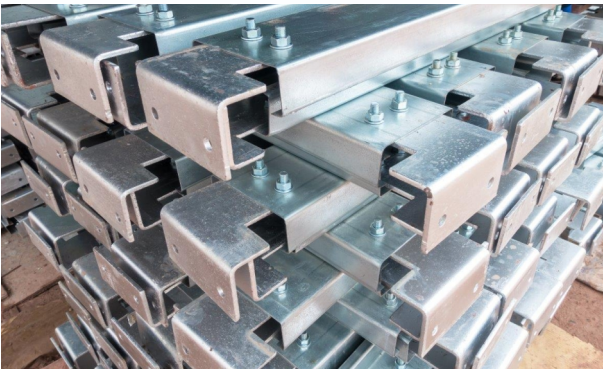
GENERAL FEATURES



25% higher energy



CNC quality finish



Galvanised Iron structure
for anti rust properties



Laser cut Precision

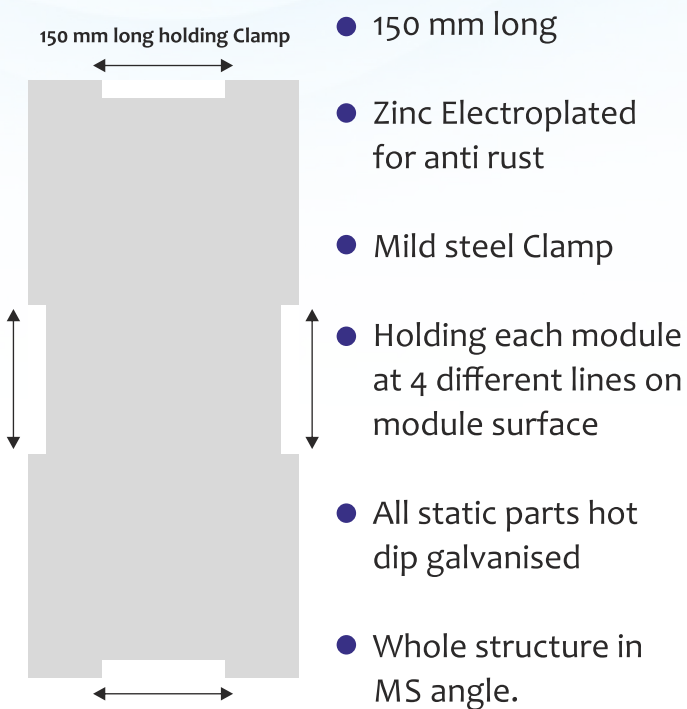


SUPER TRACKERS SPECIAL

FEATURES

Superlock on solar panel to balance extremely rough windy conditions on roof-tops
Super Grip on solar panel

Simple mechanism with use of very low power



- Just One component tracking mechanism (Patent filed)
- Very low power mechanism (Eg. Only one 40W motor for 5 Kwp Solar plant.
- Almost zero vibration
- Maintenance as low as Rs. 50/Solar module/year.
- Onsite-replacement warranty.
- 7 days per week service.



**GET YOUR
QUOTE
TODAY !!**

9873160546

www.shashiarun.com